

JIVE

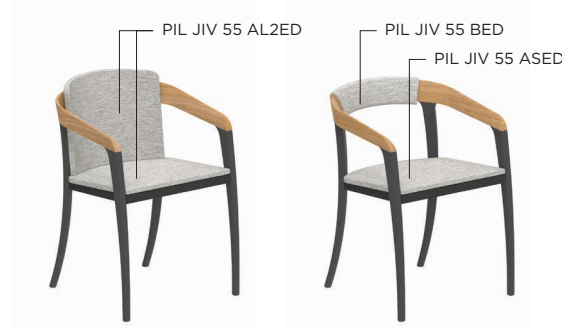
Design by Kris Van Puyvelde

STANDARD / ON REQUEST



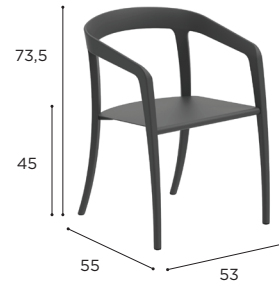
JIVE SPECIFICATIONS

DINING CHAIR	
REF:	JIV 55W...
WEIGHT:	6,6 kg



COATED ALUMINIUM + TEAK											
WR	W	PB	W	OL	W	S	W	BR	W	A	W
JIV 55 WWR	JIV 55 WPB	JIV 55 WOL	JIV 55 WS	JIV 55 WBR	JIV 55 WA						
CHF 1.159	CHF 1.159	CHF 1.159	CHF 1.159	CHF 1.159	CHF 1.099						
CUSHIONS											
PIL JIV 55 ALED... (SEAT + BACK)											
CAT. A	CHF 395										
CAT. B	CHF 474										
CAT. C	CHF 553										
PIL JIV 55 ASED... (SEAT)											
CAT. A	CHF 115										
CAT. B	CHF 138										
CAT. C	CHF 161										
PIL JIV 55 BED... (BACK)											
CAT. A	CHF 150										
CAT. B	CHF 180										
CAT. C	CHF 210										

DINING CHAIR	
REF:	JIV 55...
WEIGHT:	6,6 kg



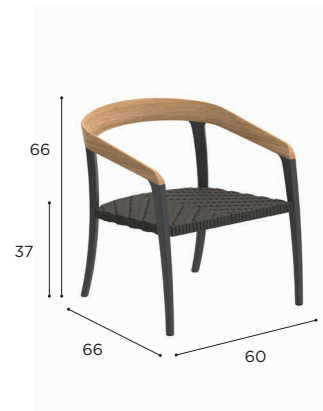
COATED ALUMINIUM						
WR	PB	OL	S	BR	A	
JIV 55 WR	JIV 55 PB	JIV 55 OL	JIV 55 S	JIV 55 BR	JIV 55 A	
CHF 1.009	CHF 1.009	CHF 1.009	CHF 1.009	CHF 1.009	CHF 949	
CUSHIONS						
PIL JIV 55 ALED... (SEAT + BACK)						
CAT. A	CHF 395					
CAT. B	CHF 474					
CAT. C	CHF 553					
PIL JIV 55 ASED... (SEAT)						
CAT. A	CHF 115					
CAT. B	CHF 138					
CAT. C	CHF 161					
PIL JIV 55 BED... (BACK)						
CAT. A	CHF 150					
CAT. B	CHF 180					
CAT. C	CHF 210					

JIVE SPECIFICATIONS

DINING CHAIR	
REF:	JIV 55WG...
WEIGHT:	6,6 kg



LOW CHAIR	
REF:	JIV 77WG...
WEIGHT:	7,4 kg



STANDARD / ON REQUEST

		COATED ALUMINIUM + TEAK					
		BR	W	PB	W	A	W
OLEFIN	JIV 55 WGBR	JIV 55 WGPB		JIV 55 WGA			
	CHF 1.309	CHF 1.309		CHF 1.249			
		CUSHIONS					
		PIL JIV 55 LED... (SEAT + BACK)					
CAT. A							CHF 395
CAT. B							CHF 474
CAT. C							CHF 553
		PIL JIV 55 SED... (SEAT)					
CAT. A							CHF 115
CAT. B							CHF 138
CAT. C							CHF 161
		PIL JIV 55 BED... (BACK)					
CAT. A							CHF 150
CAT. B							CHF 180
CAT. C							CHF 210

		COATED ALUMINIUM + TEAK					
		BR	W	PB	W	A	W
OLEFIN	JIV 77 WGBR	JIV 77 WGPB		JIV 77 WGA			
	CHF 1.649	CHF 1.649		CHF 1.549			
		CUSHIONS					
		PIL JIV 77 SED... (SEAT)					
CAT. A							CHF 155
CAT. B							CHF 186
CAT. C							CHF 217
		PIL JIV 77 BED... (BACK)					
CAT. A							CHF 150
CAT. B							CHF 180
CAT. C							CHF 210

TEAK & MAHOGANY

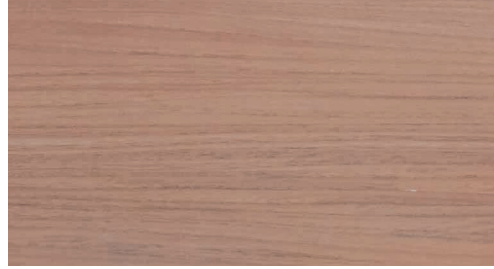
AS ROYAL BOTANIA NEVER COMPROMISES ON QUALITY, ONLY CAREFULLY SELECTED MATURE TEAKWOOD IS USED IN OUR PRODUCTS. ALL OF IT HARVESTED IN STRICT ACCORDANCE WITH OUR ENVIRONMENTAL POLICIES. TEAK WOOD'S RENOWNED DURABILITY IS DUE TO ITS HIGH CONTENT OF NATURAL OILS. THE LIMITED ABSORPTION OF MOISTURE PROTECTS THE WOOD FROM WARPING AND GIVES IT ENORMOUS STABILITY. IN ADDITION, TEAK IS HIGHLY RESISTANT TO ATTACKS BY PESTS. IT IS BECAUSE OF THESE QUALITIES, AS WELL AS ITS EXCEPTIONALLY ATTRACTIVE HUE AND STRUCTURE, THAT TEAK IS WIDELY CONSIDERED "THE NOBLEST OF ALL WOOD TYPES".

MAHOGANY IS A HARDWOOD WITH A REDDISH COLOUR THAT IS WIDELY USED FOR BOAT BUILDING, AS WELL AS FURNITURE MANUFACTURING.

TEAK
REF: W



OILED MAHOGANY
REF: MHOT

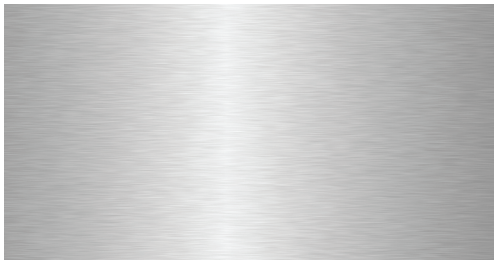


STAINLESS STEEL

STAINLESS STEEL IS A FERROUS ALLOY WITH INCREASED CORROSION RESISTANCE DUE TO THE ADDITION OF CHROME AND NICKEL. CHLORINE, THE GREATEST ENEMY OF STAINLESS STEEL, CAN CAUSE A TYPE OF CORROSION KNOWN AS "PITTING". FOR THIS REASON, IT IS RECOMMENDED THAT IN COASTAL LOCATIONS THE METAL BE GIVEN AN ELECTROPOLISHING TREATMENT, IN ORDER TO FURTHER INCREASE ITS RESISTANCE TO CORROSION. THE FURNITURE FRAMES OF THE WAVE IS SUPPLIED WITH AN ELECTROPOLISHED FINISH AS STANDARD.

FOR THE NINIX, O-ZON, QT & TABOELA RANGES WE RECOMMEND THE OPTIONAL ELECTROPOLISHING TREATMENT OF THE FRAME IF IT IS TO BE USED IN A CORROSIVE ENVIRONMENT.

BRUSHED STAINLESS STEEL
REF: SS

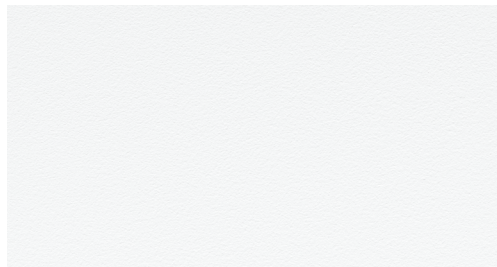


ELECTROPOLISHED STAINLESS STEEL
REF: EP

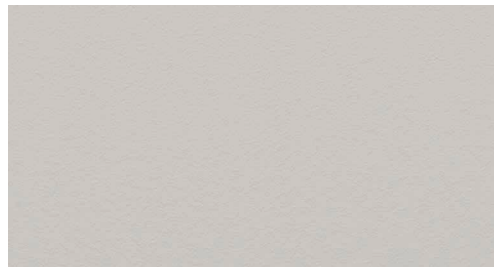


POWDER COATING COLOURS

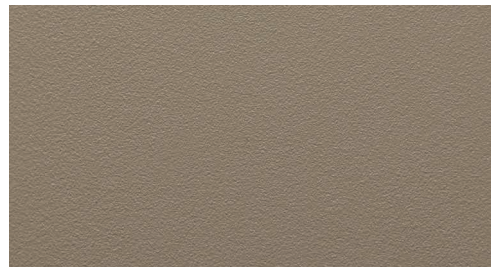
WHITE
REF: WR



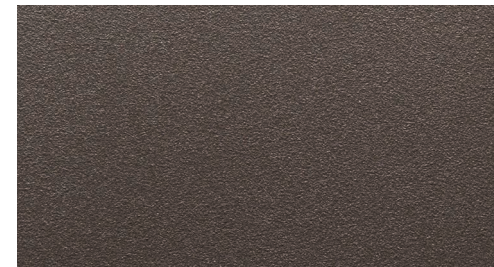
PEBBLE
REF: PB



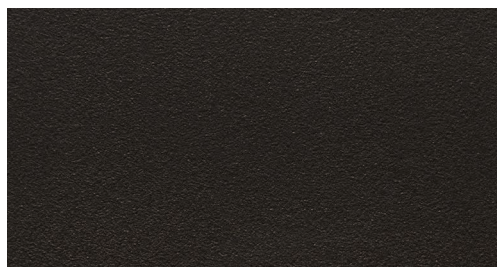
SAND
REF: S



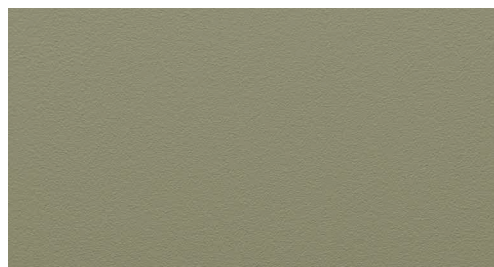
BRONZE
REF: BR



ANTHRACITE
REF: A



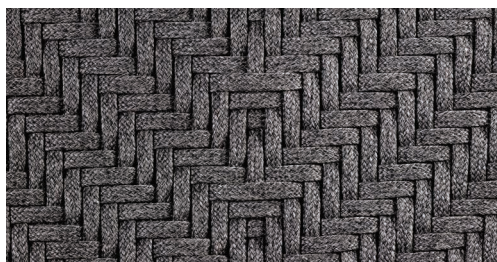
OLIVE
REF: OL



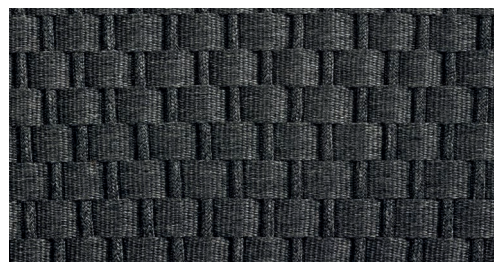
FIBER

OLEFIN FIBER IS A SYNTHETIC FIBER MADE FROM POLYPROPYLENE. THE ADVANTAGE OF THIS FIBER IS ITS STRENGTH, COLOUR FASTNESS AND COMFORT. ALSO IT IS VERY RESISTANT TO STAINING AND DIFFERENT WEATHER CONDITIONS.

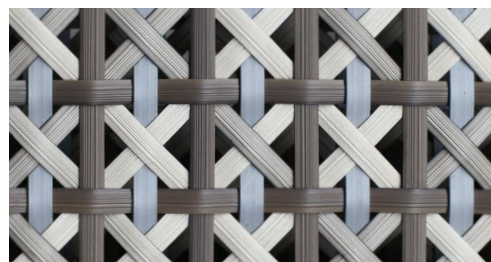
JIVE COLLECTION (OLEFIN FIBER)



SAMBA COLLECTION (OLEFIN FIBER)



CALYPSO COLLECTION (POLYTHYLENE FIBER)



FENSI COLLECTION

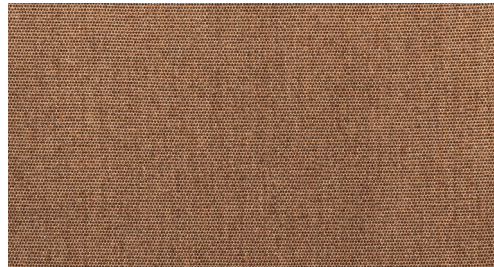


CATEGORY A FABRICS ACRYLIC

WHITE
REF: ...WU - CAT.: A - ACRYLIC



COCONUT
REF: ...CC - CAT.: A - ACRYLIC



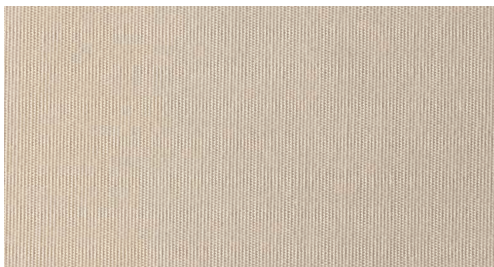
CAPPUCCINO
REF: ...CAU - CAT.: A - ACRYLIC



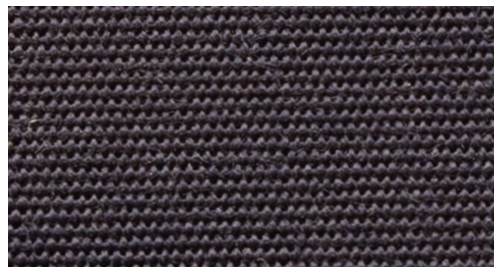
ROCK
REF: ...ROU - CAT.: A - ACRYLIC



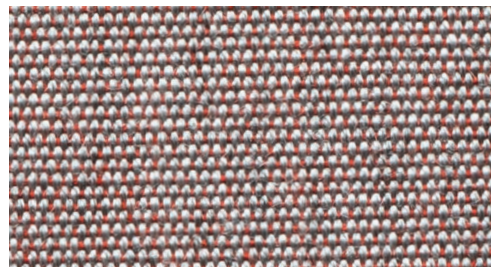
ECRU
REF: ...EU - CAT.: A - ACRYLIC



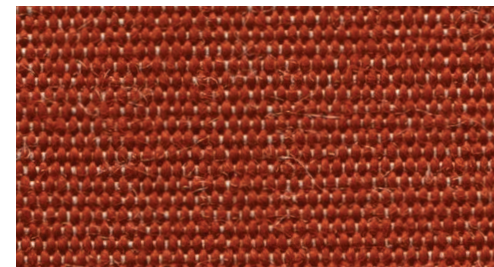
NAVY BLUE
REF: ...NBU - CAT.: A - ACRYLIC



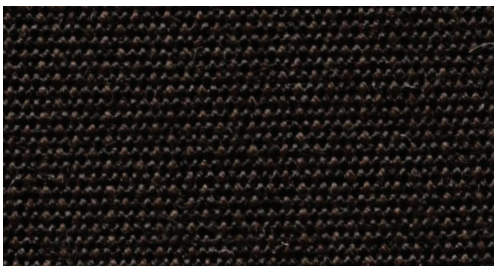
ROSE
REF: ...RO - CAT.: A - ACRYLIC



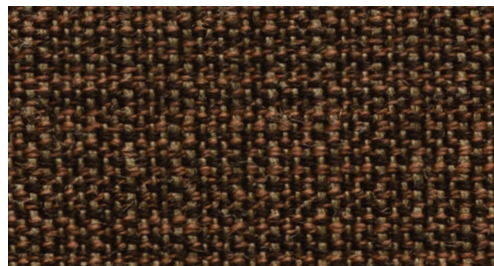
TERRA
REF: ...TER - CAT.: A - ACRYLIC



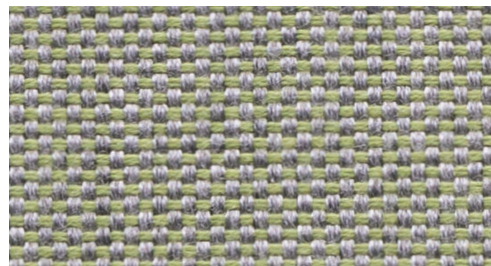
BLACK
REF: ...ZU - CAT.: A - ACRYLIC



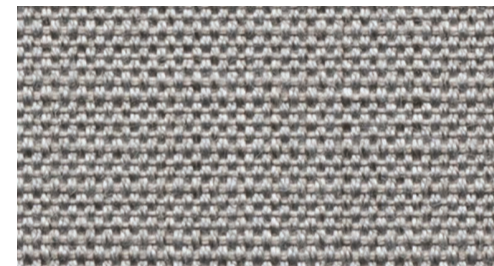
CHOCOLAT LINEN
REF: ...CHL - CAT.: A - ACRYLIC



SAGE LINEN
REF: ...SL - CAT.: A - ACRYLIC



FROST LINEN
REF: ...FL - CAT.: A - ACRYLIC



CATEGORY B FABRICS ACRYLIC & POLYPROPYLENE

WHITE HEAVY
REF: ...WAH - CAT.: B - POLYPROPYLENE



LIGHT BLUE HEAVY
REF: ...LBH - CAT.: B - POLYPROPYLENE



AZURE BLUE HEAVY
REF: ...AZH - CAT.: B - POLYPROPYLENE



ROCK HEAVY
REF: ...ROH - CAT.: B - POLYPROPYLENE



SAND HEAVY
REF: ...SAH - CAT.: B - POLYPROPYLENE



SAFFRON HEAVY
REF: ...SFH - CAT.: B - POLYPROPYLENE



RED WINE HEAVY
REF: ...RWH - CAT.: B - POLYPROPYLENE



CARMINE HEAVY
REF: ...CH - CAT.: B - POLYPROPYLENE



MOSS HEAVY
REF: ...MH - CAT.: B - POLYPROPYLENE



CARAMEL HEAVY
REF: ...CAH - CAT.: B - POLYPROPYLENE



AUBERGINE HEAVY
REF: ...AUH - CAT.: B - POLYPROPYLENE



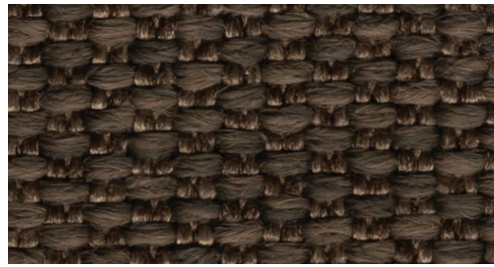
GRANITE HEAVY
REF: ...GRH - CAT.: B - POLYPROPYLENE



PITCH BLACK HEAVY
REF: ...ZUPH - CAT.: B - POLYPROPYLENE



DARK BROWN TWIN
REF: ...DBT - CAT.: B - POLYPROPYLENE



WHITE TWIN
REF: ...WUT - CAT.: B - POLYPROPYLENE



CATEGORY B FABRICS ACRYLIC & POLYPROPYLENE

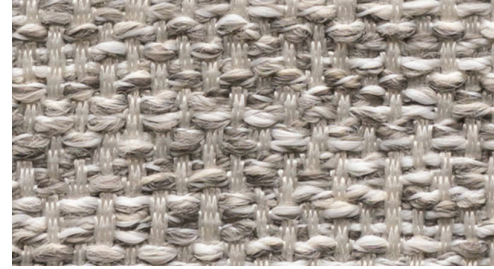
NATURAL WHITE DOT
REF: ...NWD - CAT.: B - POLYPROPYLENE



NATURAL GREY DOT
REF: ...NGD - CAT.: B - POLYPROPYLENE



NATURAL SILVER DOT
REF: ...NSD CAT.: B - POLYPROPYLENE



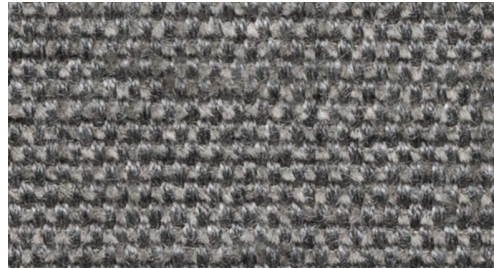
NATURAL ECRU DOT
REF: ...NED - CAT.: B - POLYPROPYLENE



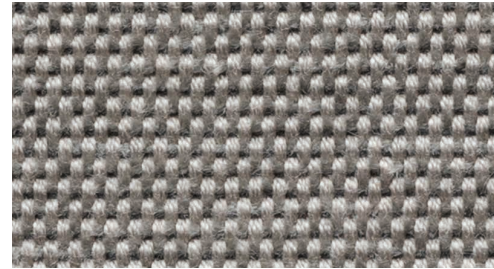
NATURAL LINEN DOT
REF: ...NLD - CAT.: B - POLYPROPYLENE



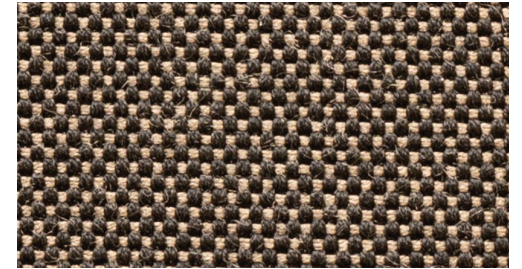
STONE FLAX
REF: ...SF - CAT.: B - ACRYLIC



DESERT STONE FLAX
REF: ...DSF - CAT.: B - ACRYLIC

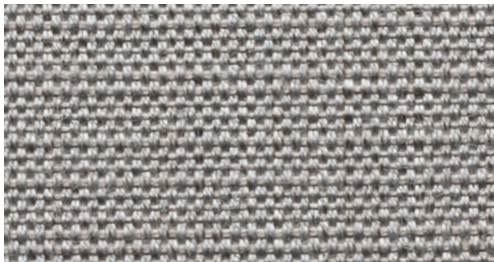


MARBLE FLAX
REF: ...MAF - CAT.: B - ACRYLIC



CATEGORY B/C LAMINATED FABRICS ACRYLIC

FROST LINEN LAMINATED
REF: ...FLL - CAT.: B - ACRYLIC



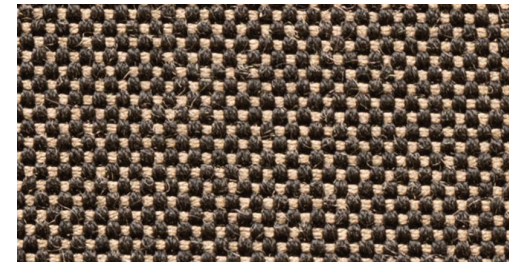
TUXEDO LINEN LAMINATED
REF: ...TULL - CAT.: B - ACRYLIC



DESERT STONE FLAX LAMINATED
REF: ...DSFL CAT.: C - ACRYLIC



MARBLE FLAX LAMINATED
REF: ...MAFL CAT.: C - ACRYLIC

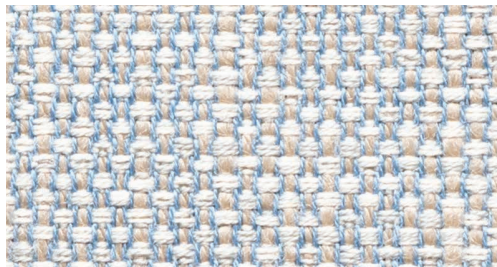


CATEGORY C FABRICS ACRYLIC & POLYPROPYLENE

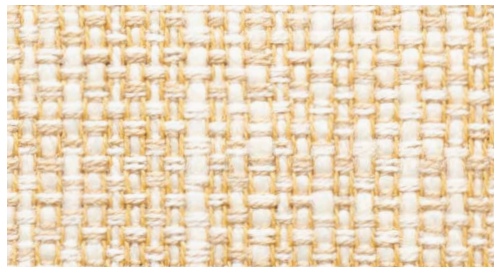
PASTEL SAND
REF: ...PAS - CAT.: C - ACRYLIC



PASTEL BLUE
REF: ...PAB - CAT.: C - ACRYLIC



PASTEL YELLOW
REF: ...PAY - CAT.: C - ACRYLIC



PASTEL COCONUT
REF: ...PAC - CAT.: C - ACRYLIC



PASTEL GREEN
REF: ...PAG - CAT.: C - ACRYLIC



PASTEL ORANGE
REF: ...PAO - CAT.: C - ACRYLIC



PASTEL RED
REF: ...PAR - CAT.: C - ACRYLIC



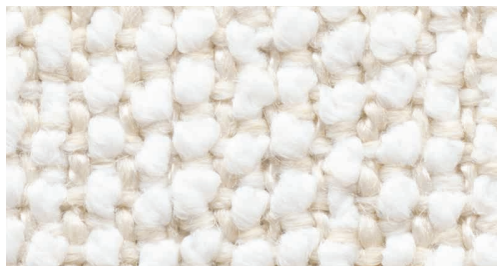
MOSS
REF: ...MOS - CAT.: C - POLYPROPYLENE



BOUCLE SAND
REF: ...BOS - CAT.: C - POLYPROPYLENE



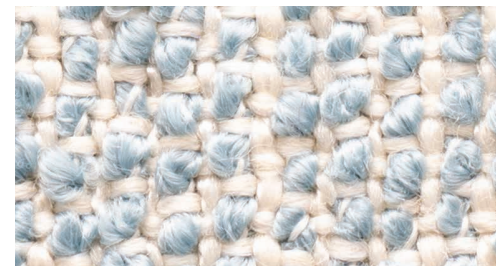
BOUCLE WHITE
REF: ...BOW - CAT.: C - POLYPROPYLENE



BOUCLE GREY
REF: ...BOG - CAT.: C - POLYPROPYLENE



BOUCLE BLUE
REF: ...BOB - CAT.: C - POLYPROPYLENE



ECRU LINEN
REF: ...EUL - CAT.: C - ACRYLIC



JUNIPER GREEN
REF: ...JG - CAT.: C - ACRYLIC



AUBERGINE MESH
REF: ...AUM - CAT.: C - ACRYLIC



NIGHT BLUE
REF: ...NB - CAT.: C - ACRYLIC



CATEGORY C FABRICS ACRYLIC & POLYPROPYLENE

VANILLE VELVET
REF: ...VAV - CAT.: C - ACRYLIC



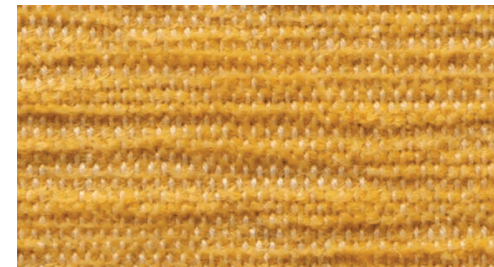
ECRU VELVET
REF: ...EUV - CAT.: C - ACRYLIC



SALMON VELVET
REF: ...SAV - CAT.: C - ACRYLIC



SAFFRON VELVET
REF: ...SFV - CAT.: C - ACRYLIC



DARK BROWN VELVET
REF: ...DBV - CAT.: C - ACRYLIC



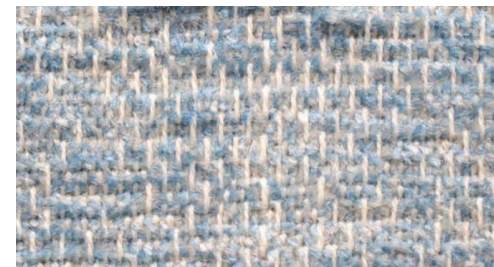
TERRA VELVET
REF: ...TEV - CAT.: C - ACRYLIC



AUBERGINE VELVET
REF: ...AUV - CAT.: C - ACRYLIC



ICE BLUE VELVET
REF: ...IBV - CAT.: C - ACRYLIC



SILVER VELVET
REF: ...SIV - CAT.: C - ACRYLIC



IRON GREY VELVET
REF: ...IGV - CAT.: C - ACRYLIC



ORANGE CHEVRON
REF: ...ORC - CAT.: C - POLYPROPYLENE



OLD ROSE
REF: ...OLR - CAT.: C - POLYPROPYLENE



LIGHT BOUCLE WHITE
REF: ...LBW - CAT.: C - POLYPROPYLENE



LIGHT BOUCLE SAND
REF: ...LBS - CAT.: C - ACRYLIC



LIGHT BOUCLE GREY
REF: ...LBG - CAT.: C - POLYPROPYLENE



GREY MESH
REF: ...GM - CAT.: C - ACRYLIC

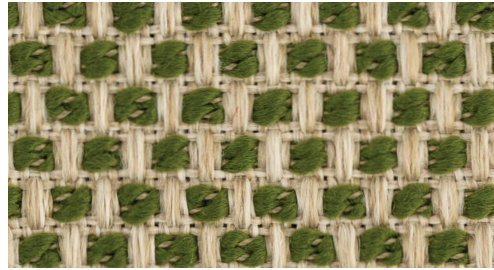


CATEGORY C FABRICS ACRYLIC & POLYPROPYLENE

CAMEL MESH
REF: ...CM - CAT.: C - POLYPROPYLENE



MOSS MESH
REF: ...MM - CAT.: C - POLYPROPYLENE



SAND MESH
REF: ...SM - CAT.: C - POLYPROPYLENE



CATEGORY C FABRICS POLYSKIN

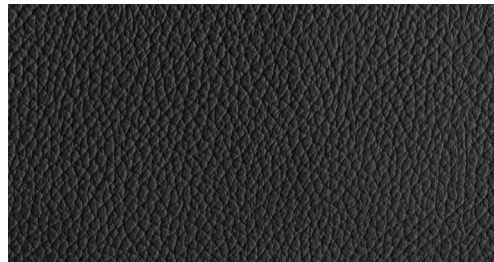
ONLY AVAILABLE FOR STRAPPY, STYLETTO & OSTREA COLLECTION!

POLYSKIN IS A SYNTHETIC ALL WEATHER LEATHER IMITATION THAT IS EXTREMELY UV AND WATER RESISTANT.

CAPPUCCINO
REF: ...SCA - CAT.: C - POLYSKIN



BLACK
REF: ...SBL - CAT.: C - POLYSKIN



COGNAC
REF: ...SCO - CAT.: C - POLYSKIN

