

EXES

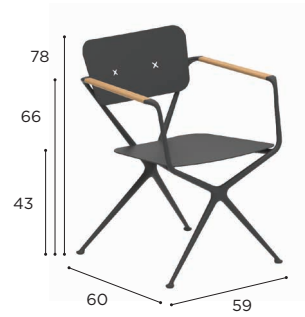
Design by Kris Van Puyvelde



EXES SPECIFICATIONS

STANDARD / ON REQUEST

DINING CHAIR	
REF:	EXS 55...
WEIGHT:	8,5 kg
INFO:	ASSEMBLING NEEDED TEAK ARMRESTS FIXING CROSSES IN FRAME COLOUR



	COATED ALUMINIUM				
	WR	PB	S	BR	A
	EXS 55 WR CHF 1.059	EXS 55 PB CHF 1.059	EXS 55 S CHF 1.059	EXS 55 BR CHF 1.059	EXS 55 A CHF 999
	CUSHIONS				
	PIL EXS 55 BED... (BACK)				
CAT. A	CHF 170				
CAT. B	CHF 204				
CAT. C	CHF 238				
	PIL EXS 55 SED... (SEAT)				
CAT. A	CHF 185				
CAT. B	CHF 222				
CAT. C	CHF 259				
	OPTIONAL TEAK FIXING CROSSES (SET) FOR BACKREST CUSHION				
	PIL EXS FCW CHF 99				

 = STANDARD CROSSES IN FRAME COLOUR (SET)

 = OPTIONAL TEAK CROSSES (SET)

LOW CHAIR	
REF:	EXS 77...
WEIGHT:	9 kg
INFO:	ASSEMBLING NEEDED TEAK ARMRESTS FIXING CROSSES IN FRAME COLOUR



	COATED ALUMINIUM				
	WR	PB	S	BR	A
	EXS 77 WR CHF 1.699	EXS 77 PB CHF 1.699	EXS 77 S CHF 1.699	EXS 77 BR CHF 1.699	EXS 77 A CHF 1.599
	CUSHIONS				
	PIL EXS 77 BED... (BACK)				
CAT. A	CHF 185				
CAT. B	CHF 222				
CAT. C	CHF 259				
	PIL EXS 77 SED... (SEAT)				
CAT. A	CHF 195				
CAT. B	CHF 234				
CAT. C	CHF 273				
	OPTIONAL TEAK FIXING CROSSES (SET) FOR BACKREST CUSHION				
	PIL EXS FCW CHF 99				

 = STANDARD CROSSES IN FRAME COLOUR (SET)

 = OPTIONAL TEAK CROSSES (SET)

EXES SPECIFICATIONS

ROUND TABLE	
REF:	EXS 120R...
WEIGHT:	C: 42,5 kg W: 29 kg
INFO:	ASSEMBLING NEEDED



		COATED ALUMINIUM				
		WR	PB	S	BR	A
CERAMIC	WUM	EXS 120R CWRWUM CHF 4.249	EXS 120R CPBWUM CHF 4.249	EXS 120R CSWUM CHF 4.249	EXS 120R CBRWUM CHF 4.249	EXS 120R CAWUM CHF 4.099
	BS	EXS 120R CWRBS CHF 4.349	EXS 120R CPBBS CHF 4.349	EXS 120R CSBS CHF 4.349	EXS 120R CBRBS CHF 4.349	EXS 120R CABS CHF 4.199
	CD	EXS 120R CWRCD CHF 4.449	EXS 120R CPBCD CHF 4.449	EXS 120R CSCD CHF 4.449	EXS 120R CBRCD CHF 4.449	EXS 120R CACD CHF 4.299
	TR	EXS 120R CWRTR CHF 4.249	EXS 120R CPBTR CHF 4.249	EXS 120R CSTR CHF 4.249	EXS 120R CBRTR CHF 4.249	EXS 120R CATR CHF 4.099
	CL	EXS 120R CWRCL CHF 4.449	EXS 120R CPBCL CHF 4.449	EXS 120R CSCL CHF 4.449	EXS 120R CBRCL CHF 4.449	EXS 120R CACL CHF 4.299
	PG	EXS 120R CWRPG CHF 4.249	EXS 120R CPBPG CHF 4.249	EXS 120R CSPG CHF 4.249	EXS 120R CBRPG CHF 4.249	EXS 120R CAPG CHF 4.099
	TS	EXS 120R CWRTS CHF 4.449	EXS 120R CPBTS CHF 4.449	EXS 120R CSTS CHF 4.449	EXS 120R CBRTS CHF 4.449	EXS 120R CATS CHF 4.299
	TM	EXS 120R CWRTM CHF 4.449	EXS 120R CPBTM CHF 4.449	EXS 120R CSTM CHF 4.449	EXS 120R CBRTM CHF 4.449	EXS 120R CATM CHF 4.299
	NM	EXS 120R CWRNM CHF 4.749	EXS 120R CPBNM CHF 4.749	EXS 120R CSNM CHF 4.749	EXS 120R CBRNM CHF 4.749	EXS 120R CANM CHF 4.599
	ZUM	EXS 120R CWRZUM CHF 4.249	EXS 120R CPBZUM CHF 4.249	EXS 120R CSZUM CHF 4.249	EXS 120R CBRZUM CHF 4.249	EXS 120R CAZUM CHF 4.099
	TEAK	EXS 120R WWR CHF 4.049	EXS 120R WPB CHF 4.049	EXS 120R WS CHF 4.049	EXS 120R WBR CHF 4.049	EXS 120R WA CHF 3.899

ROUND TABLE	
REF:	EXS 160R...
WEIGHT:	C: 69 kg W: 42,5 kg
INFO:	ASSEMBLING NEEDED



		COATED ALUMINIUM				
		WR	PB	S	BR	A
CERAMIC	WUM	EXS 160R CWRWUM CHF 5.899	EXS 160R CPBWUM CHF 5.899	EXS 160R CSWUM CHF 5.899	EXS 160R CBRWUM CHF 5.899	EXS 160R CAWUM CHF 5.699
	BS	EXS 160R CWRBS CHF 6.099	EXS 160R CPBBS CHF 6.099	EXS 160R CSBS CHF 6.099	EXS 160R CBRBS CHF 6.099	EXS 160R CABS CHF 5.899
	CD	EXS 160R CWRCD CHF 6.199	EXS 160R CPBCD CHF 6.199	EXS 160R CSCD CHF 6.199	EXS 160R CBRCD CHF 6.199	EXS 160R CACD CHF 5.999
	CL	EXS 160R CWRCL CHF 6.199	EXS 160R CPBCL CHF 6.199	EXS 160R CSCL CHF 6.199	EXS 160R CBRCL CHF 6.199	EXS 160R CACL CHF 5.999
	PG	EXS 160R CWRPG CHF 5.899	EXS 160R CPBPG CHF 5.899	EXS 160R CSPG CHF 5.899	EXS 160R CBRPG CHF 5.899	EXS 160R CAPG CHF 5.699
	TS	EXS 160R CWRTS CHF 6.199	EXS 160R CPBTS CHF 6.199	EXS 160R CSTS CHF 6.199	EXS 160R CBRTS CHF 6.199	EXS 160R CATS CHF 5.999
	TM	EXS 160R CWRTM CHF 6.199	EXS 160R CPBTM CHF 6.199	EXS 160R CSTM CHF 6.199	EXS 160R CBRTM CHF 6.199	EXS 160R CATM CHF 5.999
	NM	EXS 160R CWRNM CHF 6.399	EXS 160R CPBNM CHF 6.399	EXS 160R CSNM CHF 6.399	EXS 160R CBRNM CHF 6.399	EXS 160R CANM CHF 6.199
	ZUM	EXS 160R CWRZUM CHF 5.899	EXS 160R CPBZUM CHF 5.899	EXS 160R CSZUM CHF 5.899	EXS 160R CBRZUM CHF 5.899	EXS 160R CAZUM CHF 5.699
	TEAK	EXS 160R WWR CHF 5.599	EXS 160R WPB CHF 5.599	EXS 160R WS CHF 5.599	EXS 160R WBR CHF 5.599	EXS 160R WA CHF 5.399

EXES SPECIFICATIONS

STANDARD / ON REQUEST

OVAL TABLE	
REF:	EXS 220...
WEIGHT:	C: 86,5 kg W: 67,5 kg
INFO:	ASSEMBLING NEEDED



		COATED ALUMINIUM					
		WR	PB	S	BR	A	
CERAMIC	WUM	EXS 220 CWRWUM CHF 6.199	EXS 220 CPBWUM CHF 6.199	EXS 220 CSWUM CHF 6.199	EXS 220 CBRWUM CHF 6.199	EXS 220 CAWUM CHF 5.999	
	BS	EXS 220 CWRBS CHF 6.399	EXS 220 CPBBS CHF 6.399	EXS 220 CSBS CHF 6.399	EXS 220 CBRBS CHF 6.399	EXS 220 CABS CHF 6.199	
	CD	EXS 220 CWRCD CHF 6.599	EXS 220 CPBCD CHF 6.599	EXS 220 CSCD CHF 6.599	EXS 220 CBRCD CHF 6.599	EXS 220 CACD CHF 6.399	
	TR	EXS 220 CWRTR CHF 6.199	EXS 220 CPBTR CHF 6.199	EXS 220 CSTR CHF 6.199	EXS 220 CBRTR CHF 6.199	EXS 220 CATR CHF 5.999	
	CL	EXS 220 CWRCL CHF 6.599	EXS 220 CPBCL CHF 6.599	EXS 220 CSCL CHF 6.599	EXS 220 CBRCL CHF 6.599	EXS 220 CACL CHF 6.399	
	PG	EXS 220 CWRPG CHF 6.199	EXS 220 CPBPG CHF 6.199	EXS 220 CSPG CHF 6.199	EXS 220 CBRPG CHF 6.199	EXS 220 CAPG CHF 5.999	
	TS	EXS 220 CWRTS CHF 6.599	EXS 220 CPBTS CHF 6.599	EXS 220 CSTS CHF 6.599	EXS 220 CBRTS CHF 6.599	EXS 220 CATS CHF 6.399	
	TM	EXS 220 CWRTM CHF 6.599	EXS 220 CPBTM CHF 6.599	EXS 220 CSTM CHF 6.599	EXS 220 CBRTM CHF 6.599	EXS 220 CATM CHF 6.399	
	NM	EXS 220 CWRNM CHF 7.199	EXS 220 CPBNM CHF 7.199	EXS 220 CSNM CHF 7.199	EXS 220 CBRNM CHF 7.199	EXS 220 CANM CHF 6.999	
	ZUM	EXS 220 CWRZUM CHF 6.199	EXS 220 CPBZUM CHF 6.199	EXS 220 CSZUM CHF 6.199	EXS 220 CBRZUM CHF 6.199	EXS 220 CAZUM CHF 5.999	
	TEAK	W	EXS 220 WWR CHF 7.199	EXS 220 WPB CHF 7.199	EXS 220 WS CHF 7.199	EXS 220 WBR CHF 7.199	EXS 220 WA CHF 6.999

OVAL TABLE	
REF:	EXS 300...
WEIGHT:	C: 113 kg W: 91,5 kg
INFO:	ASSEMBLING NEEDED



		COATED ALUMINIUM					
		WR	PB	S	BR	A	
CERAMIC	WUM	EXS 300 CWRWUM CHF 7.699	EXS 300 CPBWUM CHF 7.699	EXS 300 CSWUM CHF 7.699	EXS 300 CBRWUM CHF 7.699	EXS 300 CAWUM CHF 7.499	
	BS	EXS 300 CWRBS CHF 7.999	EXS 300 CPBBS CHF 7.999	EXS 300 CSBS CHF 7.999	EXS 300 CBRBS CHF 7.999	EXS 300 CABS CHF 7.799	
	CD	EXS 300 CWRCD CHF 8.199	EXS 300 CPBCD CHF 8.199	EXS 300 CSCD CHF 8.199	EXS 300 CBRCD CHF 8.199	EXS 300 CACD CHF 7.999	
	TR	EXS 300 CWRTR CHF 7.699	EXS 300 CPBTR CHF 7.699	EXS 300 CSTR CHF 7.699	EXS 300 CBRTR CHF 7.699	EXS 300 CATR CHF 7.499	
	CL	EXS 300 CWRCL CHF 8.199	EXS 300 CPBCL CHF 8.199	EXS 300 CSCL CHF 8.199	EXS 300 CBRCL CHF 8.199	EXS 300 CACL CHF 7.999	
	PG	EXS 300 CWRPG CHF 7.699	EXS 300 CPBPG CHF 7.699	EXS 300 CSPG CHF 7.699	EXS 300 CBRPG CHF 7.699	EXS 300 CAPG CHF 7.499	
	TS	EXS 300 CWRTS CHF 8.199	EXS 300 CPBTS CHF 8.199	EXS 300 CSTS CHF 8.199	EXS 300 CBRTS CHF 8.199	EXS 300 CATS CHF 7.999	
	TM	EXS 300 CWRTM CHF 8.199	EXS 300 CPBTM CHF 8.199	EXS 300 CSTM CHF 8.199	EXS 300 CBRTM CHF 8.199	EXS 300 CATM CHF 7.999	
	NM	EXS 300 CWRNM CHF 8.799	EXS 300 CPBNM CHF 8.799	EXS 300 CSNM CHF 8.799	EXS 300 CBRNM CHF 8.799	EXS 300 CANM CHF 8.599	
	ZUM	EXS 300 CWRZUM CHF 7.699	EXS 300 CPBZUM CHF 7.699	EXS 300 CSZUM CHF 7.699	EXS 300 CBRZUM CHF 7.699	EXS 300 CAZUM CHF 7.499	
	TEAK	W	EXS 300 WWR CHF 8.899	EXS 300 WPB CHF 8.899	EXS 300 WS CHF 8.899	EXS 300 WBR CHF 8.899	EXS 300 WA CHF 8.699

EXES SPECIFICATIONS

ELLIPSE TABLE	
REF:	EXS 2513...
WEIGHT:	89 kg
INFO:	ASSEMBLING NEEDED



		COATED ALUMINIUM				
		WR	PB	S	BR	A
CERAMIC	WUM	EXS 2513 CWRWUM CHF 7.399	EXS 2513 CPBWUM CHF 7.399	EXS 2513 CSWUM CHF 7.399	EXS 2513 CBRWUM CHF 7.399	EXS 2513 CAWUM CHF 7.199
	BS	EXS 2513 CWRBS CHF 7.599	EXS 2513 CPBBS CHF 7.599	EXS 2513 CSBS CHF 7.599	EXS 2513 CBRBS CHF 7.599	EXS 2513 CABS CHF 7.399
	CD	EXS 2513 CWRCD CHF 7.799	EXS 2513 CPBCD CHF 7.799	EXS 2513 CSCD CHF 7.799	EXS 2513 CBRCD CHF 7.799	EXS 2513 CACD CHF 7.599
	PG	EXS 2513 CWRPG CHF 7.399	EXS 2513 CPBPG CHF 7.399	EXS 2513 CSPG CHF 7.399	EXS 2513 CBRPG CHF 7.399	EXS 2513 CAPG CHF 7.199
	CL	EXS 2513 CWRCL CHF 7.799	EXS 2513 CPBCL CHF 7.799	EXS 2513 CSCL CHF 7.799	EXS 2513 CBRCL CHF 7.799	EXS 2513 CACL CHF 7.599
	TS	EXS 2513 CWRTS CHF 7.799	EXS 2513 CPBTS CHF 7.799	EXS 2513 CSTS CHF 7.799	EXS 2513 CBRTS CHF 7.799	EXS 2513 CATS CHF 7.599
	TM	EXS 2513 CWRTM CHF 7.799	EXS 2513 CPBTM CHF 7.799	EXS 2513 CSTM CHF 7.799	EXS 2513 CBRTM CHF 7.799	EXS 2513 CATM CHF 7.599
	NM	EXS 2513 CWRNM CHF 8.399	EXS 2513 CPBNM CHF 8.399	EXS 2513 CSNM CHF 8.399	EXS 2513 CBRNM CHF 8.399	EXS 2513 CANM CHF 8.199
	ZUM	EXS 2513 CWRZUM CHF 7.399	EXS 2513 CPBZUM CHF 7.399	EXS 2513 CSZUM CHF 7.399	EXS 2513 CBRZUM CHF 7.399	EXS 2513 CAZUM CHF 7.199

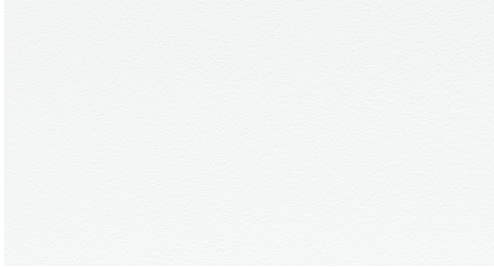
ELLIPSE TABLE	
REF:	EXS 3214...
WEIGHT:	120 kg
INFO:	ASSEMBLING NEEDED



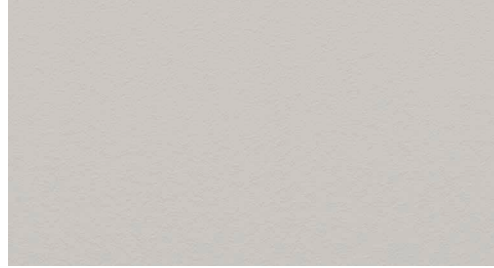
		COATED ALUMINIUM				
		WR	PB	S	BR	A
CERAMIC	WUM	EXS 3214 CWRWUM CHF 7.899	EXS 3214 CPBWUM CHF 7.899	EXS 3214 CSWUM CHF 7.899	EXS 3214 CBRWUM CHF 7.899	EXS 3214 CAWUM CHF 7.699
	BS	EXS 3214 CWRBS CHF 8.199	EXS 3214 CPBBS CHF 8.199	EXS 3214 CSBS CHF 8.199	EXS 3214 CBRBS CHF 8.199	EXS 3214 CABS CHF 7.999
	CD	EXS 3214 CWRCD CHF 8.399	EXS 3214 CPBCD CHF 8.399	EXS 3214 CSCD CHF 8.399	EXS 3214 CBRCD CHF 8.399	EXS 3214 CACD CHF 8.199
	CL	EXS 3214 CWRCL CHF 8.399	EXS 3214 CPBCL CHF 8.399	EXS 3214 CSCL CHF 8.399	EXS 3214 CBRCL CHF 8.399	EXS 3214 CACL CHF 8.199
	PG	EXS 3214 CWRPG CHF 7.899	EXS 3214 CPBPG CHF 7.899	EXS 3214 CSPG CHF 7.899	EXS 3214 CBRPG CHF 7.899	EXS 3214 CAPG CHF 7.699
	TS	EXS 3214 CWRTS CHF 8.399	EXS 3214 CPBTS CHF 8.399	EXS 3214 CSTS CHF 8.399	EXS 3214 CBRTS CHF 8.399	EXS 3214 CATS CHF 8.199
	TM	EXS 3214 CWRTM CHF 8.399	EXS 3214 CPBTM CHF 8.399	EXS 3214 CSTM CHF 8.399	EXS 3214 CBRTM CHF 8.399	EXS 3214 CATM CHF 8.199
	NM	EXS 3214 CWRNM CHF 9.099	EXS 3214 CPBNM CHF 9.099	EXS 3214 CSNM CHF 9.099	EXS 3214 CBRNM CHF 9.099	EXS 3214 CANM CHF 8.899
	ZUM	EXS 3214 CWRZUM CHF 7.899	EXS 3214 CPBZUM CHF 7.899	EXS 3214 CSZUM CHF 7.899	EXS 3214 CBRZUM CHF 7.899	EXS 3214 CAZUM CHF 7.699

POWDER COATING COLOURS

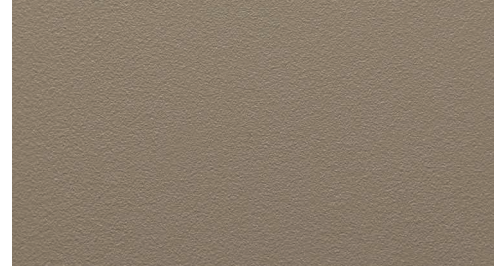
WHITE
REF: WR



PEBBLE
REF: PB



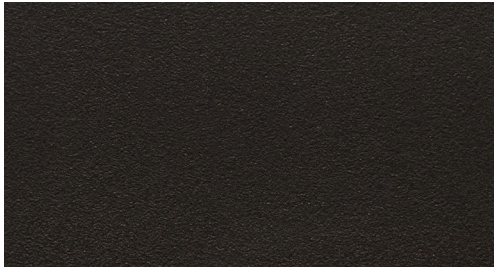
SAND
REF: S



BRONZE
REF: BR



ANTHRACITE
REF: A



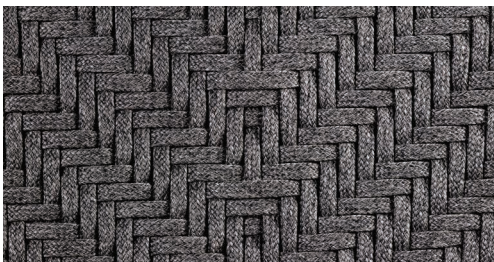
OLIVE
REF: OL



FIBER

OLEFIN FIBER IS A SYNTHETIC FIBER MADE FROM POLYPROPYLENE. THE ADVANTAGE OF THIS FIBER IS ITS STRENGTH, COLOUR FASTNESS AND COMFORT. ALSO IT IS VERY RESISTANT TO STAINING AND DIFFERENT WEATHER CONDITIONS.

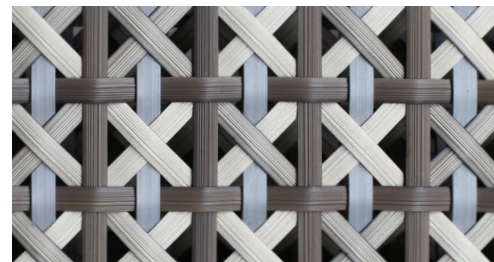
JIVE COLLECTION (OLEFIN FIBER)



SAMBA COLLECTION (OLEFIN FIBER)



CALYPSO COLLECTION (POLYTHYLENE FIBER)



FENSI COLLECTION

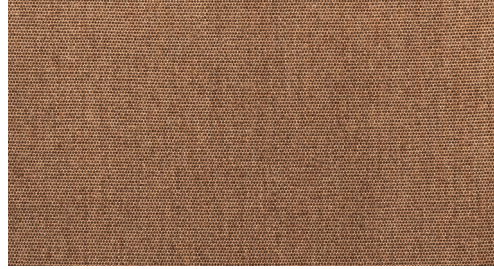


CATEGORY A FABRICS ACRYLIC

WHITE
REF: ...WU - CAT.: A - ACRYLIC



COCONUT
REF: ...CC - CAT.: A - ACRYLIC



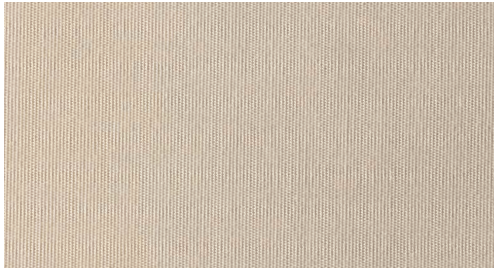
CAPPUCCINO
REF: ...CAU - CAT.: A - ACRYLIC



ROCK
REF: ...ROU - CAT.: A - ACRYLIC



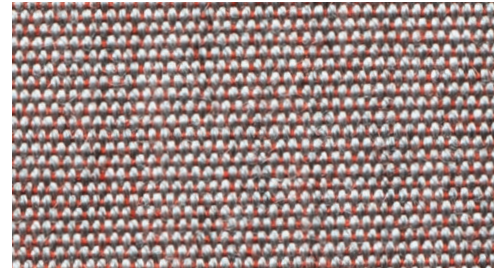
ECRU
REF: ...EU - CAT.: A - ACRYLIC



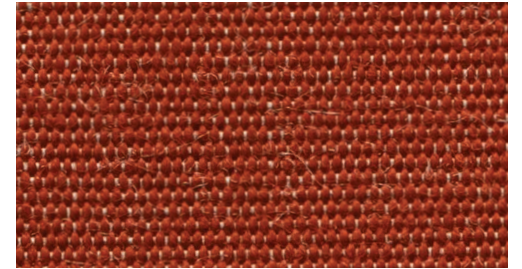
NAVY BLUE
REF: ...NBU - CAT.: A - ACRYLIC



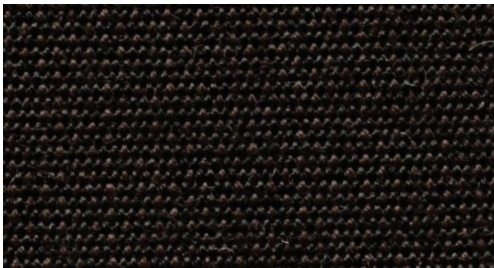
ROSE
REF: ...RO - CAT.: A - ACRYLIC



TERRA
REF: ...TER - CAT.: A - ACRYLIC



BLACK
REF: ...ZU - CAT.: A - ACRYLIC



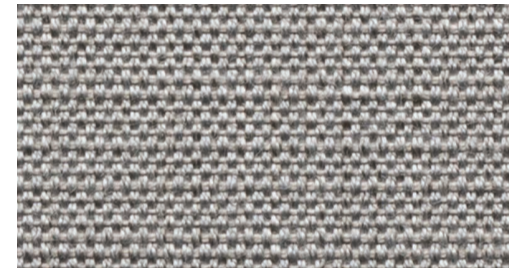
CHOCOLAT LINEN
REF: ...CHL - CAT.: A - ACRYLIC



SAGE LINEN
REF: ...SL - CAT.: A - ACRYLIC



FROST LINEN
REF: ...FL - CAT.: A - ACRYLIC



CATEGORY B FABRICS ACRYLIC & POLYPROPYLENE

WHITE HEAVY
REF: ...WAH - CAT.: B - POLYPROPYLENE



LIGHT BLUE HEAVY
REF: ...LBH - CAT.: B - POLYPROPYLENE



AZURE BLUE HEAVY
REF: ...AZH - CAT.: B - POLYPROPYLENE



ROCK HEAVY
REF: ...ROH - CAT.: B - POLYPROPYLENE



SAND HEAVY
REF: ...SAH - CAT.: B - POLYPROPYLENE



SAFFRON HEAVY
REF: ...SFH - CAT.: B - POLYPROPYLENE



RED WINE HEAVY
REF: ...RWH - CAT.: B - POLYPROPYLENE



CARMINE HEAVY
REF: ...CH - CAT.: B - POLYPROPYLENE



MOSS HEAVY
REF: ...MH - CAT.: B - POLYPROPYLENE



CARAMEL HEAVY
REF: ...CAH - CAT.: B - POLYPROPYLENE



AUBERGINE HEAVY
REF: ...AUH - CAT.: B - POLYPROPYLENE



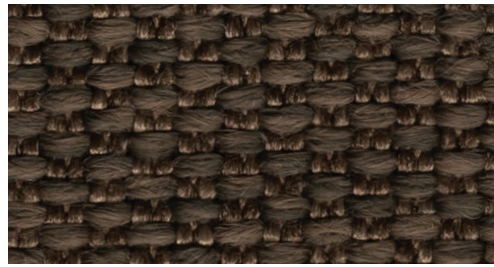
GRANITE HEAVY
REF: ...GRH - CAT.: B - POLYPROPYLENE



PITCH BLACK HEAVY
REF: ...ZUPH - CAT.: B - POLYPROPYLENE



DARK BROWN TWIN
REF: ...DBT - CAT.: B - POLYPROPYLENE



WHITE TWIN
REF: ...WUT - CAT.: B - POLYPROPYLENE



CATEGORY B FABRICS ACRYLIC & POLYPROPYLENE

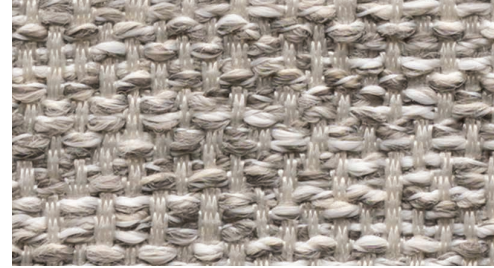
NATURAL WHITE DOT
REF: ...NWD - CAT.: B - POLYPROPYLENE



NATURAL GREY DOT
REF: ...NGD - CAT.: B - POLYPROPYLENE



NATURAL SILVER DOT
REF: ...NSD - CAT.: B - POLYPROPYLENE



NATURAL ECRU DOT
REF: ...NED - CAT.: B - POLYPROPYLENE



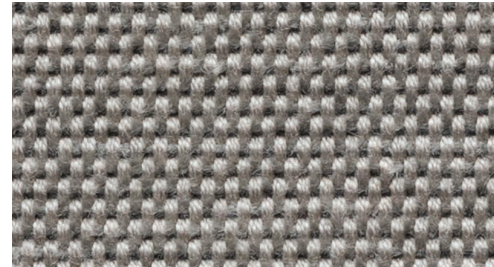
NATURAL LINEN DOT
REF: ...NLD - CAT.: B - POLYPROPYLENE



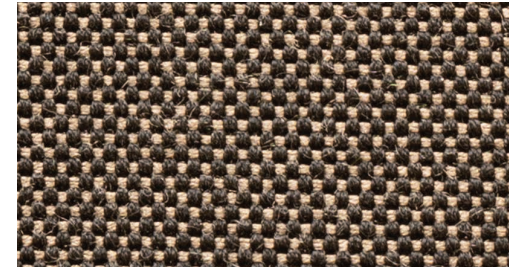
STONE FLAX
REF: ...SF - CAT.: B - ACRYLIC



DESERT STONE FLAX
REF: ...DSF - CAT.: B - ACRYLIC

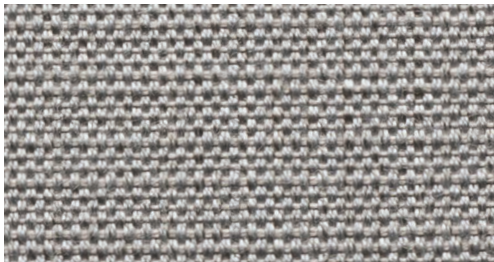


MARBLE FLAX
REF: ...MAF - CAT.: B - ACRYLIC



CATEGORY B/C LAMINATED FABRICS ACRYLIC

FROST LINEN LAMINATED
REF: ...FLL - CAT.: B - ACRYLIC



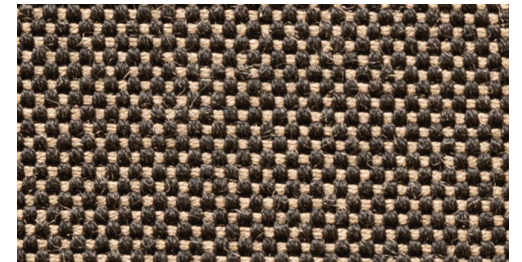
TUXEDO LINEN LAMINATED
REF: ...TULL - CAT.: B - ACRYLIC



DESERT STONE FLAX LAMINATED
REF: ...DSFL - CAT.: C - ACRYLIC



MARBLE FLAX LAMINATED
REF: ...MAFL - CAT.: C - ACRYLIC



CATEGORY C FABRICS ACRYLIC & POLYPROPYLENE

PASTEL SAND
REF: ...PAS - CAT.: C - ACRYLIC



PASTEL BLUE
REF: ...PAB - CAT.: C - ACRYLIC



PASTEL YELLOW
REF: ...PAY - CAT.: C - ACRYLIC



PASTEL COCONUT
REF: ...PAC - CAT.: C - ACRYLIC



PASTEL GREEN
REF: ...PAG - CAT.: C - ACRYLIC



PASTEL ORANGE
REF: ...PAO - CAT.: C - ACRYLIC



PASTEL RED
REF: ...PAR - CAT.: C - ACRYLIC



MOSS
REF: ...MOS - CAT.: C - POLYPROPYLENE



BOUCLE SAND
REF: ...BOS - CAT.: C - POLYPROPYLENE



BOUCLE WHITE
REF: ...BOW - CAT.: C - POLYPROPYLENE



BOUCLE GREY
REF: ...BOG - CAT.: C - POLYPROPYLENE



BOUCLE BLUE
REF: ...BOB - CAT.: C - POLYPROPYLENE



ECRU LINEN
REF: ...EUL - CAT.: C - ACRYLIC



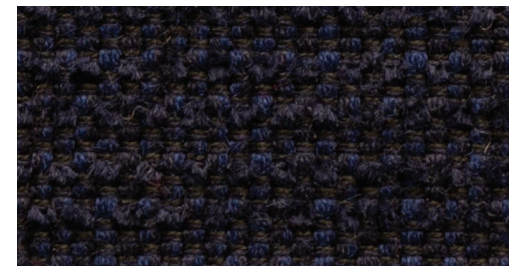
JUNIPER GREEN
REF: ...JG - CAT.: C - ACRYLIC



AUBERGINE MESH
REF: ...AUM - CAT.: C - ACRYLIC



NIGHT BLUE
REF: ...NB - CAT.: C - ACRYLIC



CATEGORY C FABRICS ACRYLIC & POLYPROPYLENE

VANILLE VELVET
REF: ...VAV - CAT.: C - ACRYLIC



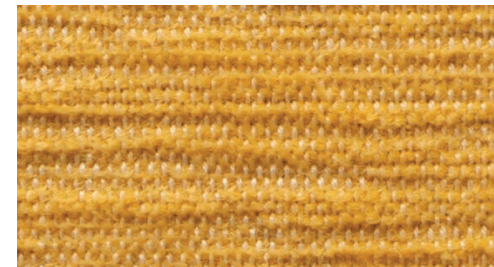
ECRU VELVET
REF: ...EUV - CAT.: C - ACRYLIC



SALMON VELVET
REF: ...SAV - CAT.: C - ACRYLIC



SAFFRON VELVET
REF: ...SFV - CAT.: C - ACRYLIC



DARK BROWN VELVET
REF: ...DBV - CAT.: C - ACRYLIC



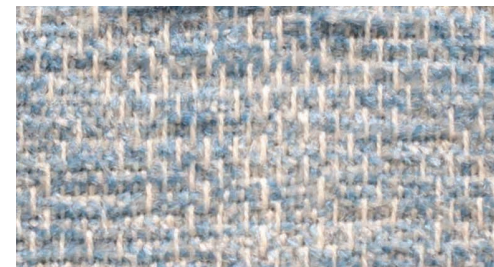
TERRA VELVET
REF: ...TEV - CAT.: C - ACRYLIC



AUBERGINE VELVET
REF: ...AUV - CAT.: C - ACRYLIC



ICE BLUE VELVET
REF: ...IBV - CAT.: C - ACRYLIC



SILVER VELVET
REF: ...SIV - CAT.: C - ACRYLIC



IRON GREY VELVET
REF: ...IGV - CAT.: C - ACRYLIC



ORANGE CHEVRON
REF: ...ORC - CAT.: C - POLYPROPYLENE



OLD ROSE
REF: ...OLR - CAT.: C - POLYPROPYLENE



LIGHT BOUCLE WHITE
REF: ...LBW - CAT.: C - POLYPROPYLENE



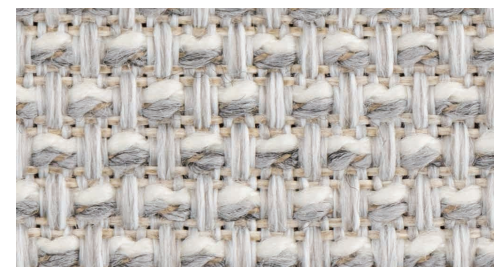
LIGHT BOUCLE SAND
REF: ...LBS - CAT.: C - ACRYLIC



LIGHT BOUCLE GREY
REF: ...LBG - CAT.: C - POLYPROPYLENE



GREY MESH
REF: ...GM - CAT.: C - ACRYLIC

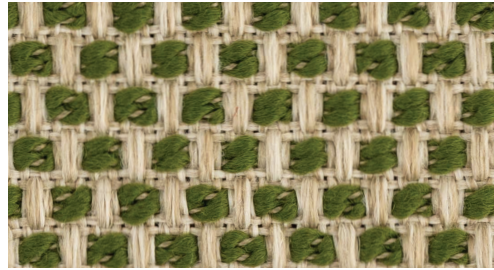


CATEGORY C FABRICS ACRYLIC & POLYPROPYLENE

CAMEL MESH
REF: ...CM - CAT.: C - POLYPROPYLENE



MOSS MESH
REF: ...MM - CAT.: C - POLYPROPYLENE



SAND MESH
REF: ...SM - CAT.: C - POLYPROPYLENE



CATEGORY C FABRICS POLYSKIN

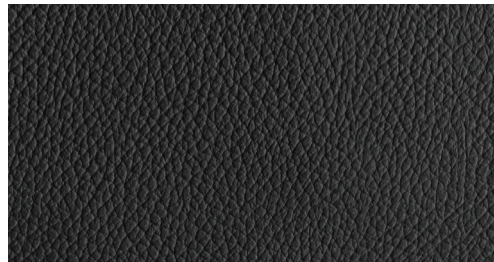
ONLY AVAILABLE FOR STRAPPY, STYLETTO & OSTREA COLLECTION!

POLYSKIN IS A SYNTHETIC ALL WEATHER LEATHER IMITATION THAT IS EXTREMELY UV AND WATER RESISTANT.

CAPPUCCINO
REF: ...SCA - CAT.: C - POLYSKIN



BLACK
REF: ...SBL - CAT.: C - POLYSKIN



COGNAC
REF: ...SCO - CAT.: C - POLYSKIN

