

**CONIX**

Design by Kris Van Puyvelde



# CONIX SPECIFICATIONS

STANDARD / ON REQUEST

SIDE TABLE	
REF:	CNX 40TL...
WEIGHT:	CG: 11,9 kg C: 11 kg W: 10,9 kg V: 8,3 kg
INFO:	ASSEMBLING NEEDED DO <b>NOT</b> USE OUTDOOR COVER ON CONCRETE TABLE TOPS!



		CONCRETE		
		CG		
CON.	CG	CNX 40TL BBCG	CHF 1.119	
	WUM	CNX 40TL CBCGWUM	CHF 999	
CERAMIC	BS	CNX 40TL CBCGBS	CHF 1.119	
	CD	CNX 40TL CBCGCD	CHF 1.119	
	TR	CNX 40TL CBCGTR	CHF 999	
	TG	CNX 40TL CBCGTG	CHF 969	
	CL	CNX 40TL CBCGCL	CHF 1.119	
	PG	CNX 40TL CBCGPG	CHF 999	
	TS	CNX 40TL CBCGTS	CHF 1.119	
	TM	CNX 40TL CBCGTM	CHF 1.119	
	NM	CNX 40TL CBCGNM	CHF 1.219	
	ZUM	CNX 40TL CBCGZUM	CHF 999	
	TEAK	W	CNX 40TL WBCG	CHF 869
		PE	CNX 40TL VBCGPE	CHF 1.249
	ENAMELED LAVA STONE	JA	CNX 40TL VBCGJA	CHF 1.249
		MO	CNX 40TL VBCGMO	CHF 1.199
DU	CNX 40TL VBCGDU	CHF 1.199		
LA	CNX 40TL VBCGLA	CHF 1.249		
SL	CNX 40TL VBCGSL	CHF 1.249		

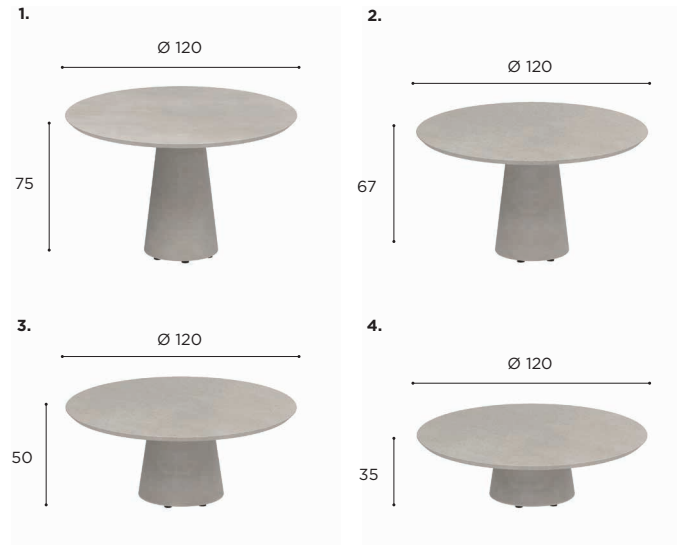
SIDE TABLE	
REF:	CNX 60T...
WEIGHT:	CG: 22,2 kg C: 26,4 kg W: 10,5 kg V: 26,3 kg
INFO:	ASSEMBLING NEEDED DO <b>NOT</b> USE OUTDOOR COVER ON CONCRETE TABLE TOPS!



		CONCRETE		
		CG		
CON.	CG	CNX 60T BBCG	CHF 1.369	
	WUM	CNX 60T CBCGWUM	CHF 1.149	
CERAMIC	BS	CNX 60T CBCGBS	CHF 1.299	
	CD	CNX 60T CBCGCD	CHF 1.369	
	TR	CNX 60T CBCGTR	CHF 1.149	
	TG	CNX 60T CBCGTG	CHF 1.099	
	CL	CNX 60T CBCGCL	CHF 1.369	
	PG	CNX 60T CBCGPG	CHF 1.149	
	TS	CNX 60T CBCGTS	CHF 1.369	
	TM	CNX 60T CBCGTM	CHF 1.369	
	NM	CNX 60T CBCGNM	CHF 1.399	
	ZUM	CNX 60T CBCGZUM	CHF 1.149	
	TEAK	W	CNX 60T WBCG	CHF 1.049
		PE	CNX 60T VBCGPE	CHF 1.799
	ENAMELED LAVA STONE	JA	CNX 60T VBCGJA	CHF 1.799
		MO	CNX 60T VBCGMO	CHF 1.749
DU	CNX 60T VBCGDU	CHF 1.749		
LA	CNX 60T VBCGLA	CHF 1.799		
SL	CNX 60T VBCGSL	CHF 1.799		

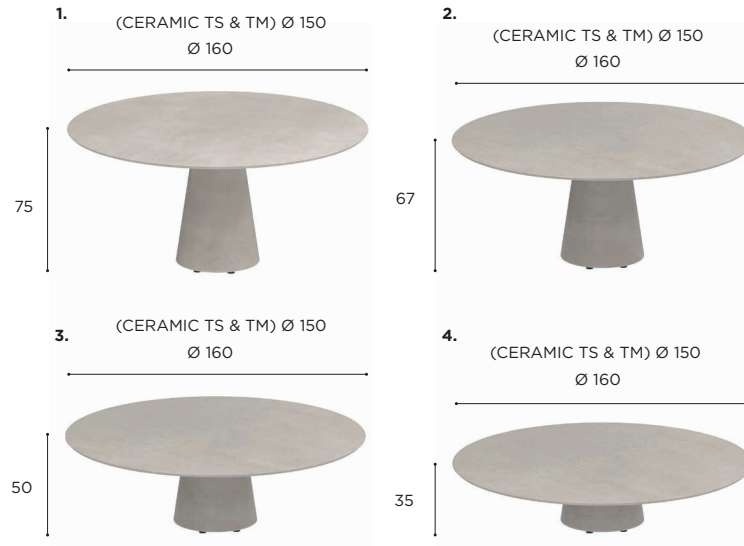
# CONIX SPECIFICATIONS

ROUND TABLE	
REF:	CNX 120R...
<b>1.</b>	WEIGHT: CG: 106 kg C: 82 kg W: 68 kg
<b>2.</b>	WEIGHT: CG: 104 kg C: 80,3 kg W: 66,4 kg
<b>3.</b>	WEIGHT: CG: 109 kg C: 85,4 kg W: 71,5 kg
<b>4.</b>	WEIGHT: CG: 101,8 kg C: 78,2 kg W: 64,3 kg
INFO:	ASSEMBLING NEEDED BASE TO BE FILLED WITH GRAVEL FOR ADDED WEIGHT DO <b>NOT</b> USE OUTDOOR COVER ON CONCRETE TABLE TOPS!



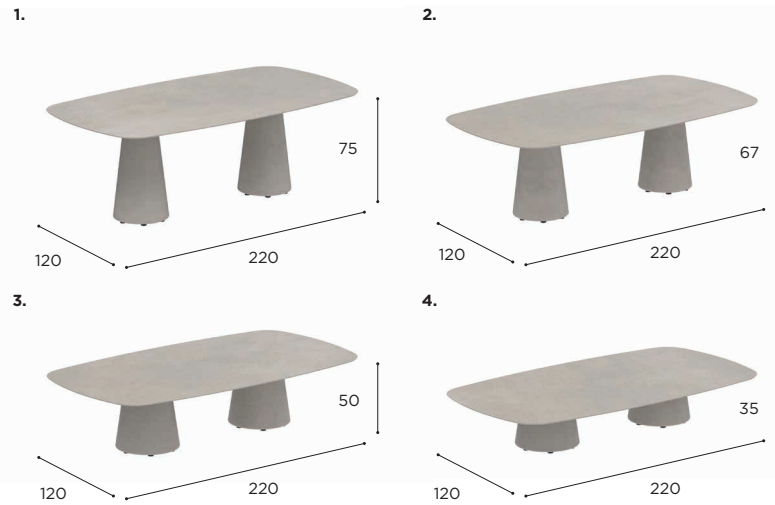
		CONCRETE			
		CG			
		1. DINING	2. LOW DINING	3. HIGH LOUNGE	4. LOW LOUNGE
CON.	CG	CNX 120R BBCG CHF 5.549	CNX 120R LDBBCG CHF 5.349	CNX 120R HLBBCG CHF 5.049	CNX 120R LLBBCG CHF 4.899
	WUM	CNX 120R CBCGWUM CHF 4.399	CNX 120R LDCBCGWUM CHF 4.199	CNX 120R HLCBCGWUM CHF 4.099	CNX 120R LLCBCGWUM CHF 3.999
	BS	CNX 120R CBCGBS CHF 4.499	CNX 120R LDCBCGBS CHF 4.299	CNX 120R HLCBCGBS CHF 4.199	CNX 120R LLCBCGBS CHF 4.099
	CD	CNX 120R CBCGCD CHF 4.599	CNX 120R LDCBCGCD CHF 4.399	CNX 120R HLCBCGCD CHF 4.299	CNX 120R LLCBCGCD CHF 4.199
	TR	CNX 120R CBCGTR CHF 4.399	CNX 120R LDCBCGTR CHF 4.199	CNX 120R HLCBCGTR CHF 4.099	CNX 120R LLCBCGTR CHF 3.999
CERAMIC	CL	CNX 120R CBCGCL CHF 4.599	CNX 120R LDCBCGCL CHF 4.399	CNX 120R HLCBCGCL CHF 4.299	CNX 120R LLCBCGCL CHF 4.199
	PG	CNX 120R CBCGPG CHF 4.399	CNX 120R LDCBCGPG CHF 4.199	CNX 120R HLCBCGPG CHF 4.099	CNX 120R LLCBCGPG CHF 3.999
	TS	CNX 120R CBCGTS CHF 4.599	CNX 120R LDCBCGTS CHF 4.399	CNX 120R HLCBCGTS CHF 4.299	CNX 120R LLCBCGTS CHF 4.199
	TM	CNX 120R CBCGTM CHF 4.599	CNX 120R LDCBCGTM CHF 4.399	CNX 120R HLCBCGTM CHF 4.299	CNX 120R LLCBCGTM CHF 4.199
	NM	CNX 120R CBCGNM CHF 4.899	CNX 120R LDCBCGNM CHF 4.699	CNX 120R HLCBCGNM CHF 4.599	CNX 120R LLCBCGNM CHF 4.499
	ZUM	CNX 120R CBCGZUM CHF 4.399	CNX 120R LDCBCGZUM CHF 4.199	CNX 120R HLCBCGZUM CHF 4.099	CNX 120R LLCBCGZUM CHF 3.999

ROUND TABLE	
REF:	CNX 160R...
<b>1.</b>	WEIGHT: CG: 158,5 kg C: 111,8 kg W: 87,1 kg
<b>2.</b>	WEIGHT: CG: 156,1 kg C: 122,9 kg W: 96,3 kg
<b>3.</b>	WEIGHT: CG: 146,2 kg C: 113 kg W: 86,4 kg
<b>4.</b>	WEIGHT: CG: 139 kg C: 105,8 kg W: 79,2 kg
INFO:	ASSEMBLING NEEDED BASE TO BE FILLED WITH GRAVEL FOR ADDED WEIGHT DO <b>NOT</b> USE OUTDOOR COVER ON CONCRETE TABLE TOPS!



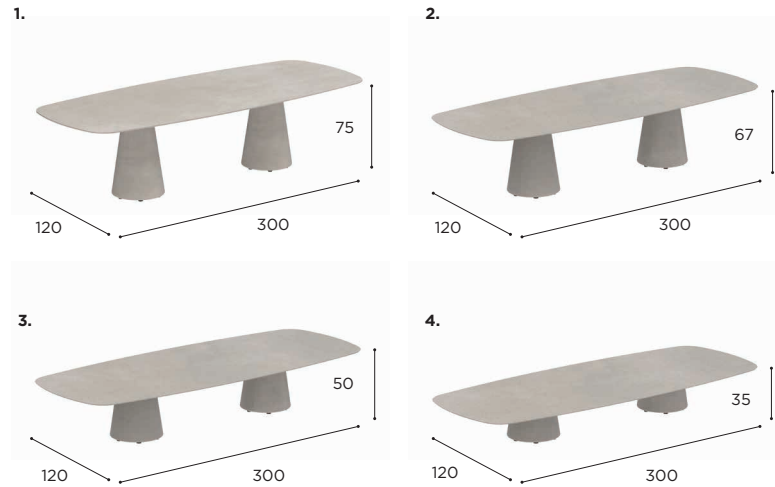
		CONCRETE			
		CG			
		1. DINING	2. LOW DINING	3. HIGH LOUNGE	4. LOW LOUNGE
CON.	CG	CNX 160R BBCG CHF 5.549	CNX 160R LDBBCG CHF 5.349	CNX 160R HLBBCG CHF 5.049	CNX 160R LLBBCG CHF 4.899
	WUM	CNX 160R CBCGWUM CHF 5.949	CNX 160R LDCBCGWUM CHF 5.749	CNX 160R HLCBCGWUM CHF 5.449	CNX 160R LLCBCGWUM CHF 5.299
	BS	CNX 160R CBCGBS CHF 6.149	CNX 160R LDCBCGBS CHF 5.949	CNX 160R HLCBCGBS CHF 5.649	CNX 160R LLCBCGBS CHF 5.499
	CD	CNX 160R CBCGCD CHF 6.249	CNX 160R LDCBCGCD CHF 6.049	CNX 160R HLCBCGCD CHF 5.749	CNX 160R LLCBCGCD CHF 5.599
	CL	CNX 160R CBCGCL CHF 6.249	CNX 160R LDCBCGCL CHF 6.049	CNX 160R HLCBCGCL CHF 5.749	CNX 160R LLCBCGCL CHF 5.599
CERAMIC	PG	CNX 160R CBCGPG CHF 5.949	CNX 160R LDCBCGPG CHF 5.749	CNX 160R HLCBCGPG CHF 5.449	CNX 160R LLCBCGPG CHF 5.299
	TS	CNX 160R CBCGTS CHF 6.249	CNX 160R LDCBCGTS CHF 6.049	CNX 160R HLCBCGTS CHF 5.749	CNX 160R LLCBCGTS CHF 5.599
	TM	CNX 160R CBCGTM CHF 6.249	CNX 160R LDCBCGTM CHF 6.049	CNX 160R HLCBCGTM CHF 5.749	CNX 160R LLCBCGTM CHF 5.599
	NM	CNX 160R CBCGNM CHF 6.449	CNX 160R LDCBCGNM CHF 6.249	CNX 160R HLCBCGNM CHF 5.949	CNX 160R LLCBCGNM CHF 5.799
	ZUM	CNX 160R CBCGZUM CHF 5.949	CNX 160R LDCBCGZUM CHF 5.749	CNX 160R HLCBCGZUM CHF 5.449	CNX 160R LLCBCGZUM CHF 5.299
TEAK	W	CNX 160R WBCG CHF 5.649	CNX 160R LDWBCG CHF 5.449	CNX 160R HLWBCG CHF 5.149	CNX 160R LLWBCG CHF 4.999

OVAL TABLE	
REF:	CNX 220...
<b>1.</b> WEIGHT:	C: 172 kg W: 154 kg
<b>2.</b> WEIGHT:	C: 167,5 kg W: 149,3 kg
<b>3.</b> WEIGHT:	C: 177,5 kg W: 159,4 kg
<b>4.</b> WEIGHT:	C: 163,1 kg W: 144,9 kg
INFO:	ASSEMBLING NEEDED BASE TO BE FILLED WITH GRAVEL FOR ADDED WEIGHT



		CONCRETE				
		CG				
		1. DINING	2. LOW DINING	3. HIGH LOUNGE	4. LOW LOUNGE	
CERAMIC	WUM	CNX 220 CBCGWUM CHF 8.899	CNX 220 LDCBCGWUM CHF 8.499	CNX 220 HLCBCGWUM CHF 8.099	CNX 220 LLCBCGWUM CHF 7.899	
	BS	CNX 220 CBCGBS CHF 9.099	CNX 220 LDCBCGBS CHF 8.699	CNX 220 HLCBCGBS CHF 8.299	CNX 220 LLCBCGBS CHF 8.099	
	CD	CNX 220 CBCGCD CHF 9.299	CNX 220 LDCBCGCD CHF 8.899	CNX 220 HLCBCGCD CHF 8.499	CNX 220 LLCBCGCD CHF 8.299	
	TR	CNX 220 CBCGTR CHF 8.899	CNX 220 LDCBCGTR CHF 8.499	CNX 220 HLCBCGTR CHF 8.099	CNX 220 LLCBCGTR CHF 7.899	
	CL	CNX 220 CBCGCL CHF 9.299	CNX 220 LDCBCGCL CHF 8.899	CNX 220 HLCBCGCL CHF 8.499	CNX 220 LLCBCGCL CHF 8.299	
	PG	CNX 220 CBCGPG CHF 8.899	CNX 220 LDCBCGPG CHF 8.499	CNX 220 HLCBCGPG CHF 8.099	CNX 220 LLCBCGPG CHF 7.899	
	TS	CNX 220 CBCGTS CHF 9.299	CNX 220 LDCBCGTS CHF 8.899	CNX 220 HLCBCGTS CHF 8.499	CNX 220 LLCBCGTS CHF 8.299	
	TM	CNX 220 CBCGTM CHF 9.299	CNX 220 LDCBCGTM CHF 8.899	CNX 220 HLCBCGTM CHF 8.499	CNX 220 LLCBCGTM CHF 8.299	
	NM	CNX 220 CBCGNM CHF 9.899	CNX 220 LDCBCGNM CHF 9.499	CNX 220 HLCBCGNM CHF 9.099	CNX 220 LLCBCGNM CHF 8.899	
	ZUM	CNX 220 CBCGZUM CHF 8.899	CNX 220 LDCBCGZUM CHF 8.499	CNX 220 HLCBCGZUM CHF 8.099	CNX 220 LLCBCGZUM CHF 7.899	
	TEAK	W	CNX 220 WBCG CHF 9.999	CNX 220 LDWBCG CHF 9.599	CNX 220 HLWBCG CHF 9.199	CNX 220 LLWBCG CHF 8.999

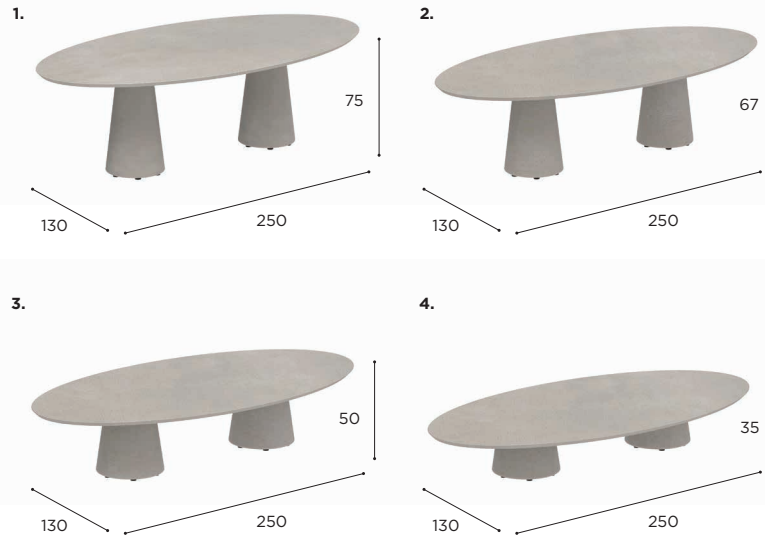
OVAL TABLE	
REF:	CNX 300...
<b>1.</b> WEIGHT:	C: 206,5 kg W: 185 kg
<b>2.</b> WEIGHT:	C: 208,2 kg W: 203,2 kg
<b>3.</b> WEIGHT:	C: 188,4 kg W: 183,4 kg
<b>4.</b> WEIGHT:	C: 173,9 kg W: 169 kg
INFO:	ASSEMBLING NEEDED BASE TO BE FILLED WITH GRAVEL FOR ADDED WEIGHT



		CONCRETE				
		CG				
		1. DINING	2. LOW DINING	3. HIGH LOUNGE	4. LOW LOUNGE	
CERAMIC	WUM	CNX 300 CBCGWUM CHF 10.699	CNX 300 LDCBCGWUM CHF 10.099	CNX 300 HLCBCGWUM CHF 9.449	CNX 300 LLCBCGWUM CHF 9.099	
	BS	CNX 300 CBCGBS CHF 10.999	CNX 300 LDCBCGBS CHF 10.399	CNX 300 HLCBCGBS CHF 9.749	CNX 300 LLCBCGBS CHF 9.399	
	CD	CNX 300 CBCGCD CHF 11.199	CNX 300 LDCBCGCD CHF 10.599	CNX 300 HLCBCGCD CHF 9.949	CNX 300 LLCBCGCD CHF 9.599	
	TR	CNX 300 CBCGTR CHF 10.699	CNX 300 LDCBCGTR CHF 10.099	CNX 300 HLCBCGTR CHF 9.449	CNX 300 LLCBCGTR CHF 9.099	
	CL	CNX 300 CBCGCL CHF 11.199	CNX 300 LDCBCGCL CHF 10.599	CNX 300 HLCBCGCL CHF 9.949	CNX 300 LLCBCGCL CHF 9.599	
	PG	CNX 300 CBCGPG CHF 10.699	CNX 300 LDCBCGPG CHF 10.099	CNX 300 HLCBCGPG CHF 9.449	CNX 300 LLCBCGPG CHF 9.099	
	TS	CNX 300 CBCGTS CHF 11.199	CNX 300 LDCBCGTS CHF 10.599	CNX 300 HLCBCGTS CHF 9.949	CNX 300 LLCBCGTS CHF 9.599	
	TM	CNX 300 CBCGTM CHF 11.199	CNX 300 LDCBCGTM CHF 10.599	CNX 300 HLCBCGTM CHF 9.949	CNX 300 LLCBCGTM CHF 9.599	
	NM	CNX 300 CBCGNM CHF 11.799	CNX 300 LDCBCGNM CHF 11.199	CNX 300 HLCBCGNM CHF 10.549	CNX 300 LLCBCGNM CHF 10.199	
	ZUM	CNX 300 CBCGZUM CHF 10.699	CNX 300 LDCBCGZUM CHF 10.099	CNX 300 HLCBCGZUM CHF 9.449	CNX 300 LLCBCGZUM CHF 9.099	
	TEAK	W	CNX 300 WBCG CHF 11.899	CNX 300 LDWBCG CHF 11.299	CNX 300 HLWBCG CHF 10.649	CNX 300 LLWBCG CHF 10.299

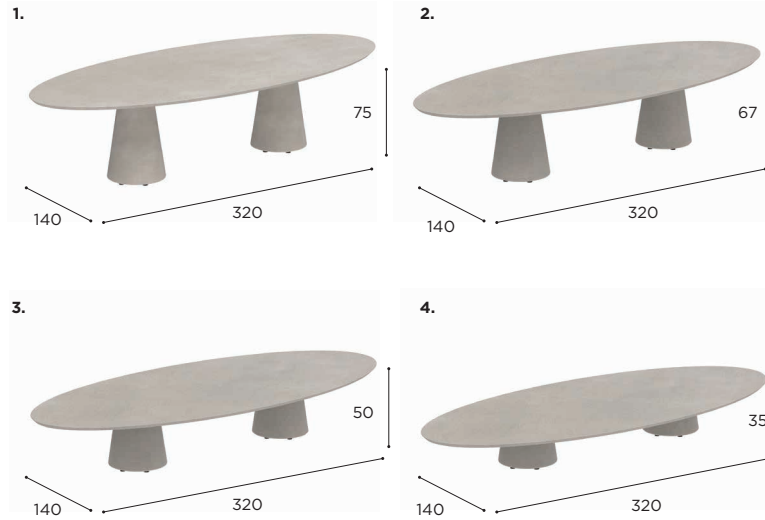
# CONIX SPECIFICATIONS

ELLIPSE TABLE	
REF:	CNX 2513...
<b>1.</b> WEIGHT:	CG: 228 kg C: 176 kg
<b>2.</b> WEIGHT:	C: 225,5 kg W: 170,9 kg
<b>3.</b> WEIGHT:	C: 235,5 kg W: 181 kg
<b>4.</b> WEIGHT:	C: 221,1 kg W: 166,6 kg
INFO:	ASSEMBLING NEEDED BASE TO BE FILLED WITH GRAVEL FOR ADDED WEIGHT <b>DO NOT</b> USE OUTDOOR COVER ON CONCRETE TABLE TOPS!



		CONCRETE			
		CG			
		1. DINING	2. LOW DINING	3. HIGH LOUNGE	4. LOW LOUNGE
CON.	CG	CNX 2513 BBCG CHF 9.299	CNX 2513 LDBBCG CHF 8.899	CNX 2513 HLBBCG CHF 8.499	CNX 2513 LLBBCG CHF 8.299
	WUM	<b>CNX 2513 CBCGWUM</b> CHF 10.199	<b>CNX 2513 LDCBCGWUM</b> CHF 9.799	<b>CNX 2513 HLCBCGWUM</b> CHF 9.399	<b>CNX 2513 LLCBCGWUM</b> CHF 9.199
CERAMIC	BS	CNX 2513 CBCGBS CHF 10.399	CNX 2513 LDCBCGBS CHF 9.999	CNX 2513 HLCBCGBS CHF 9.599	CNX 2513 LLCBCGBS CHF 9.399
	CD	CNX 2513 CBCGCD CHF 10.599	CNX 2513 LDCBCGCD CHF 10.199	CNX 2513 HLCBCGCD CHF 9.799	CNX 2513 LLCBCGCD CHF 9.599
	CL	CNX 2513 CBCGCL CHF 10.599	CNX 2513 LDCBCGCL CHF 10.199	CNX 2513 HLCBCGCL CHF 9.799	CNX 2513 LLCBCGCL CHF 9.599
	PG	<b>CNX 2513 CBCGPG</b> CHF 10.199	<b>CNX 2513 LDCBCGPG</b> CHF 9.799	<b>CNX 2513 HLCBCGPG</b> CHF 9.399	<b>CNX 2513 LLCBCGPG</b> CHF 9.199
	TS	CNX 2513 CBCGTS CHF 10.599	CNX 2513 LDCBCGTS CHF 10.199	CNX 2513 HLCBCGTS CHF 9.799	CNX 2513 LLCBCGTS CHF 9.599
	TM	CNX 2513 CBCGTM CHF 10.599	CNX 2513 LDCBCGTM CHF 10.199	CNX 2513 HLCBCGTM CHF 9.799	CNX 2513 LLCBCGTM CHF 9.599
	NM	CNX 2513 CBCGNM CHF 11.199	CNX 2513 LDCBCGNM CHF 10.799	CNX 2513 HLCBCGNM CHF 10.399	CNX 2513 LLCBCGNM CHF 10.199
	ZUM	<b>CNX 2513 CBCGZUM</b> CHF 10.199	<b>CNX 2513 LDCBCGZUM</b> CHF 9.799	<b>CNX 2513 HLCBCGZUM</b> CHF 9.399	<b>CNX 2513 LLCBCGZUM</b> CHF 9.199

ELLIPSE TABLE	
REF:	CNX 3214...
<b>1.</b> WEIGHT:	CG: 281,7 kg C: 213 kg
<b>2.</b> WEIGHT:	C: 301,5 kg W: 230,2 kg
<b>3.</b> WEIGHT:	C: 281,7 kg W: 210,4 kg
<b>4.</b> WEIGHT:	C: 367,3 kg W: 195,9 kg
INFO:	ASSEMBLING NEEDED BASE TO BE FILLED WITH GRAVEL FOR ADDED WEIGHT <b>DO NOT</b> USE OUTDOOR COVER ON CONCRETE TABLE TOPS!



		CONCRETE			
		CG			
		1. DINING	2. LOW DINING	3. HIGH LOUNGE	4. LOW LOUNGE
CON.	CG	CNX 3214 BBCG CHF 10.199	CNX 3214 LDBBCG CHF 9.699	CNX 3214 HLBBCG CHF 8.949	CNX 3214 LLBBCG CHF 8.599
	WUM	<b>CNX 3214 CBCGWUM</b> CHF 11.299	<b>CNX 3214 LDCBCGWUM</b> CHF 10.799	<b>CNX 3214 HLCBCGWUM</b> CHF 10.049	<b>CNX 3214 LLCBCGWUM</b> CHF 9.699
CERAMIC	BS	CNX 3214 CBCGBS CHF 11.599	CNX 3214 LDCBCGBS CHF 11.099	CNX 3214 HLCBCGBS CHF 10.349	CNX 3214 LLCBCGBS CHF 9.999
	CD	CNX 3214 CBCGCD CHF 11.799	CNX 3214 LDCBCGCD CHF 11.299	CNX 3214 HLCBCGCD CHF 10.549	CNX 3214 LLCBCGCD CHF 10.199
	CL	CNX 3214 CBCGCL CHF 11.799	CNX 3214 LDCBCGCL CHF 11.299	CNX 3214 HLCBCGCL CHF 10.549	CNX 3214 LLCBCGCL CHF 10.199
	PG	<b>CNX 3214 CBCGPG</b> CHF 11.299	<b>CNX 3214 LDCBCGPG</b> CHF 10.799	<b>CNX 3214 HLCBCGPG</b> CHF 10.049	<b>CNX 3214 LLCBCGPG</b> CHF 9.699
	TS	CNX 3214 CBCGTS CHF 11.799	CNX 3214 LDCBCGTS CHF 11.299	CNX 3214 HLCBCGTS CHF 10.549	CNX 3214 LLCBCGTS CHF 10.199
	TM	CNX 3214 CBCGTM CHF 11.799	CNX 3214 LDCBCGTM CHF 11.299	CNX 3214 HLCBCGTM CHF 10.549	CNX 3214 LLCBCGTM CHF 10.199
	NM	CNX 3214 CBCGNM CHF 12.499	CNX 3214 LDCBCGNM CHF 11.999	CNX 3214 HLCBCGNM CHF 11.249	CNX 3214 LLCBCGNM CHF 10.899
	ZUM	<b>CNX 3214 CBCGZUM</b> CHF 11.299	<b>CNX 3214 LDCBCGZUM</b> CHF 10.799	<b>CNX 3214 HLCBCGZUM</b> CHF 10.049	<b>CNX 3214 LLCBCGZUM</b> CHF 9.699

# CONIX SPECIFICATIONS

STANDARD / ON REQUEST

SQUIRCLE TABLE	
REF:	CNX 150V...
WEIGHT:	CG: 179 kg C: 132 kg
INFO:	ASSEMBLING NEEDED BASE TO BE FILLED WITH GRAVEL FOR ADDED WEIGHT DO <b>NOT</b> USE OUTDOOR COVER ON CONCRETE TABLE TOPS!



		DINING
		CONCRETE
		CG
CON.	CG	CNX 150V BBCG CHF 5.799
	WUM	CNX 150V CBCGWUM CHF 6.299
CERAMIC	BS	CNX 150V CBCGBS CHF 6.499
	CD	CNX 150V CBCGCD CHF 6.599
	CL	CNX 150V CBCGCL CHF 6.599
	PG	CNX 150V CBCGPG CHF 6.299
	TS	CNX 150V CBCGTS CHF 6.599
	TM	CNX 150V CBCGTM CHF 6.599
	NM	CNX 150V CBCGNM CHF 6.899
	ZUM	CNX 150V CBCGZUM CHF 6.299

## TEAK & MAHOGANY

AS ROYAL BOTANIA NEVER COMPROMISES ON QUALITY, ONLY CAREFULLY SELECTED MATURE TEAKWOOD IS USED IN OUR PRODUCTS. ALL OF IT HARVESTED IN STRICT ACCORDANCE WITH OUR ENVIRONMENTAL POLICIES. TEAK WOOD'S RENOWNED DURABILITY IS DUE TO ITS HIGH CONTENT OF NATURAL OILS. THE LIMITED ABSORPTION OF MOISTURE PROTECTS THE WOOD FROM WARPING AND GIVES IT ENORMOUS STABILITY. IN ADDITION, TEAK IS HIGHLY RESISTANT TO ATTACKS BY PESTS. IT IS BECAUSE OF THESE QUALITIES, AS WELL AS ITS EXCEPTIONALLY ATTRACTIVE HUE AND STRUCTURE, THAT TEAK IS WIDELY CONSIDERED "THE NOBLEST OF ALL WOOD TYPES".

MAHOGANY IS A HARDWOOD WITH A REDDISH COLOUR THAT IS WIDELY USED FOR BOAT BUILDING, AS WELL AS FURNITURE MANUFACTURING.

TEAK  
REF: W



OILED MAHOGANY  
REF: MHOT

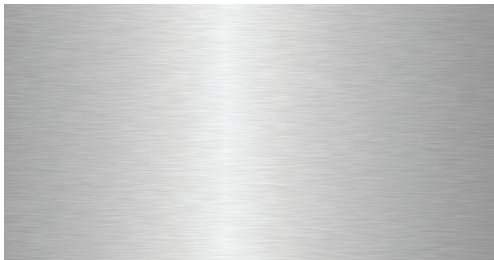


## STAINLESS STEEL

STAINLESS STEEL IS A FERROUS ALLOY WITH INCREASED CORROSION RESISTANCE DUE TO THE ADDITION OF CHROME AND NICKEL. CHLORINE, THE GREATEST ENEMY OF STAINLESS STEEL, CAN CAUSE A TYPE OF CORROSION KNOWN AS "PITTING". FOR THIS REASON, IT IS RECOMMENDED THAT IN COASTAL LOCATIONS THE METAL BE GIVEN AN ELECTROPOLISHING TREATMENT, IN ORDER TO FURTHER INCREASE ITS RESISTANCE TO CORROSION. THE FURNITURE FRAMES OF THE WAVE IS SUPPLIED WITH AN ELECTROPOLISHED FINISH AS STANDARD.

FOR THE NINIX, O-ZON, QT & TABOELA RANGES WE RECOMMEND THE OPTIONAL ELECTROPOLISHING TREATMENT OF THE FRAME IF IT IS TO BE USED IN A CORROSIVE ENVIRONMENT.

BRUSHED STAINLESS STEEL  
REF: SS



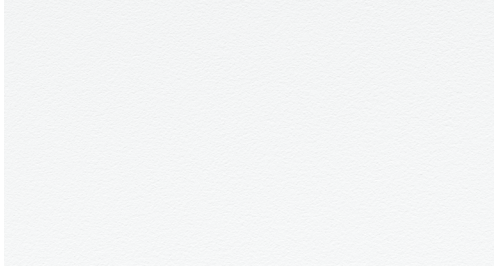
ELECTROPOLISHED STAINLESS STEEL  
REF: EP



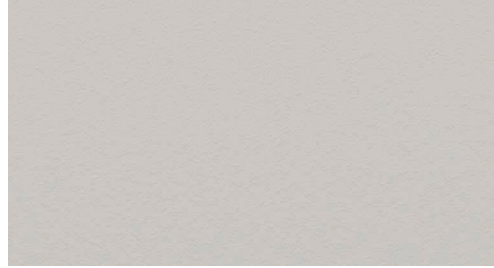


## POWDER COATING COLOURS

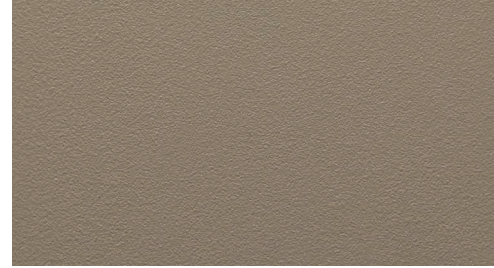
WHITE  
REF: WR



PEBBLE  
REF: PB



SAND  
REF: S



BRONZE  
REF: BR



ANTHRACITE  
REF: A



OLIVE  
REF: OL



## FIBER

OLEFIN FIBER IS A SYNTHETIC FIBER MADE FROM POLYPROPYLENE. THE ADVANTAGE OF THIS FIBER IS ITS STRENGTH, COLOUR FASTNESS AND COMFORT. ALSO IT IS VERY RESISTANT TO STAINING AND DIFFERENT WEATHER CONDITIONS.

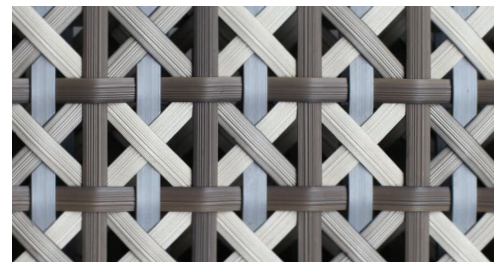
JIVE COLLECTION (OLEFIN FIBER)



SAMBA COLLECTION (OLEFIN FIBER)



CALYPSO COLLECTION (POLYTHYLENE FIBER)



FENSI COLLECTION





# CERAMIC

THE CERAMIC TOPS ARE MADE FROM NATURAL CLAYS, SO SMALL COLOUR GRADATIONS CAN OCCUR. THIS MAKES EACH TABLE UNIQUE.

WHITE  
REF: WUM



CEMENTO LUMINOSO  
REF: CL



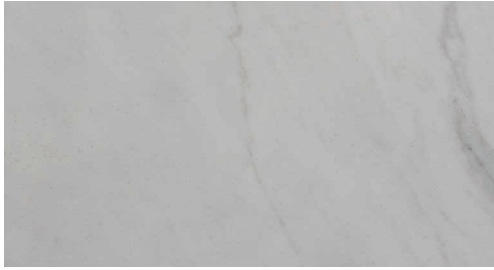
PEARL GREY  
REF: PG



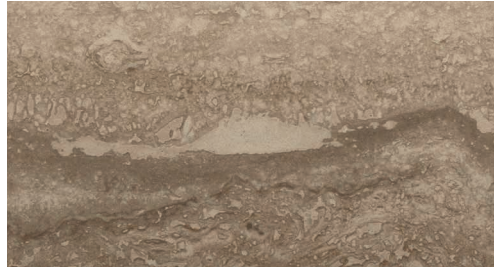
NERO MARQUINA  
REF: NM



BIANCO STATUARIO  
REF: BS



TRAVERTINO  
REF: TR



TAUPE GREY  
REF: TG



BLACK  
REF: ZUM



CEPPO DOLOMITICA  
REF: CD



TERRA SABBIA  
REF: TS



TERRA MARRONE  
REF: TM



## CONCRETE

WE USE AN ULTRA-HIGH PERFORMANCE CONCRETE REINFORCED BY NATURAL MINERAL COMPONENTS AND ORGANIC FIBERS. THANKS TO ITS DISCONTINUOUS PORE STRUCTURE AND CRACK-BRIDGING FIBERS, IT IS VIRTUALLY IMPERVIOUS. PENETRATION OF CHLORIDE IONS IS ALSO SIGNIFICANTLY REDUCED AND THUS PERFORMS EXCEPTIONALLY WELL IN HIGHLY CORROSIVE ENVIRONMENTS SUCH AS NEAR BEACHES.

CEMENT GREY

REF: CG



## ENAMELED LAVA STONES

LAVA STONES WITH A VITREOUS ENAMEL COATING. FUSED AT 850°C THE ENAMEL BECOMES VERY HARD AND EXTREMELY RESISTANT TO ALL WEATHER CONDITIONS.

PEARL

REF: PE



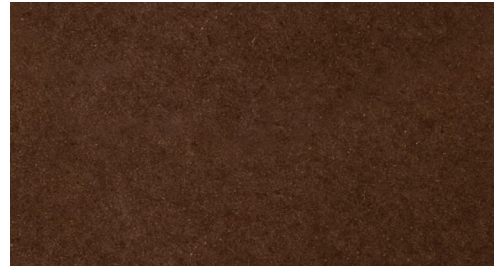
MOON

REF: MO



LAVA

REF: LA



SLATE

REF: SL



JADE

REF: JA



DUSK

REF: DU

