



CASAMANIA

– made in Italy –

Vad

Designer	004
Vad Impilabile	008
Vad Wood	016
Vad Girevole	026
Projects	036
Technical Info	048

Inspired by the clean, minimalist chairs of mid-century Scandinavian design, Vad is a complete seating system.

Injection moulded in recyclable polypropylene, the shell with its soft curves enhances comfort and style.

The seat is produced with "*Polygiene*[®]" technology, which uses tiny amounts of silver salt to inhibit the growth of bacteria, thus preventing odours and ensuring the hygiene of human skin.

The Vad chair is available:

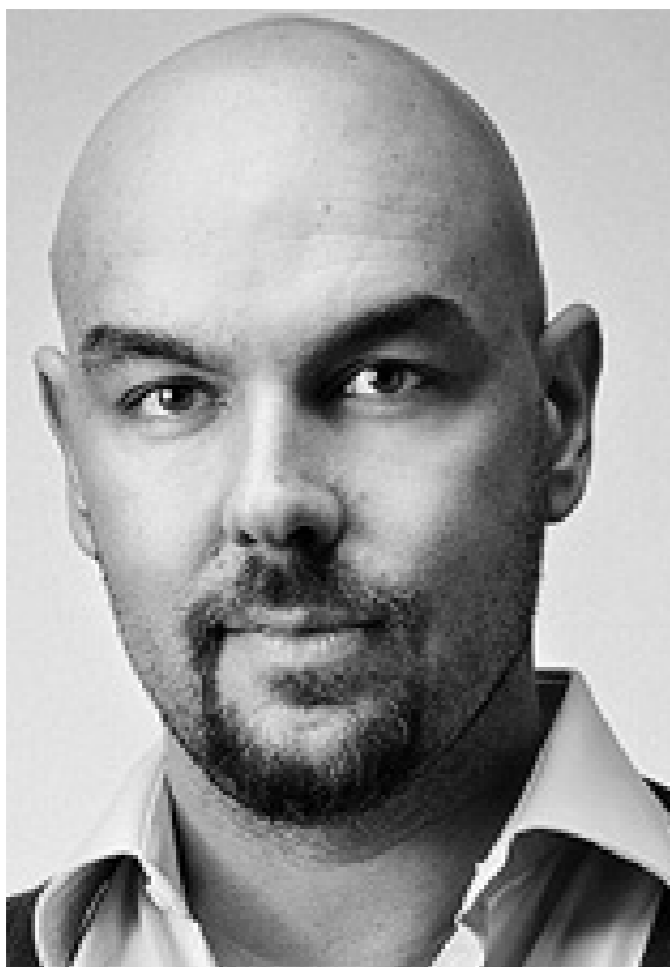
- › stackable with metal legs
- › with four-spoke swivel perch
- › with solid wood legs

and

- › with coloured polypropylene shell
- › with padded polypropylene shell upholstered in leather or fabric
- › with polypropylene shell covered in natural leather

The three variants of shell and legs cross each other generating nine chair variations.

Designer



Luca Nichetto

Luca Nichetto was born in 1976 in Venice, where he studied at the Art Institute. Afterwards he attended the University Institute of Architecture of Venice (IUAV), where he earned a degree in Industrial Design. He began his professional career in 1999 by designing his first projects in Murano glass for Salviati. That same year he began his collaboration with Foscari, for whom he not only designed products, but also worked as a consultant on new materials research and product development (2001–2003). In 2006 he launched his own design firm, Nichetto&Partners, which specializes in industrial design and offers its services as a design consultancy. In 2011 he also opened another professional office in Stockholm, Sweden.

Nichetto has been awarded a number of international prizes, including the Gran Design Award (2008), the Chicago Athenaeum Museum of Architecture's Good Design Award (2008), the IF Product Design Award (2008) and the Elle Decoration International Design Awards' (EDIDA) Designer of the Year award in the Young Designer Talent category (2009).

Apart from participating in various design exhibitions in Europe, the U.S and Japan, Nichetto has also been the subject of important retrospective shows mounted in prominent European cities, including Venice, London, Paris and Stockholm, and he has served as art director for a number of international design events.

Vad Girevole



Vad Wood

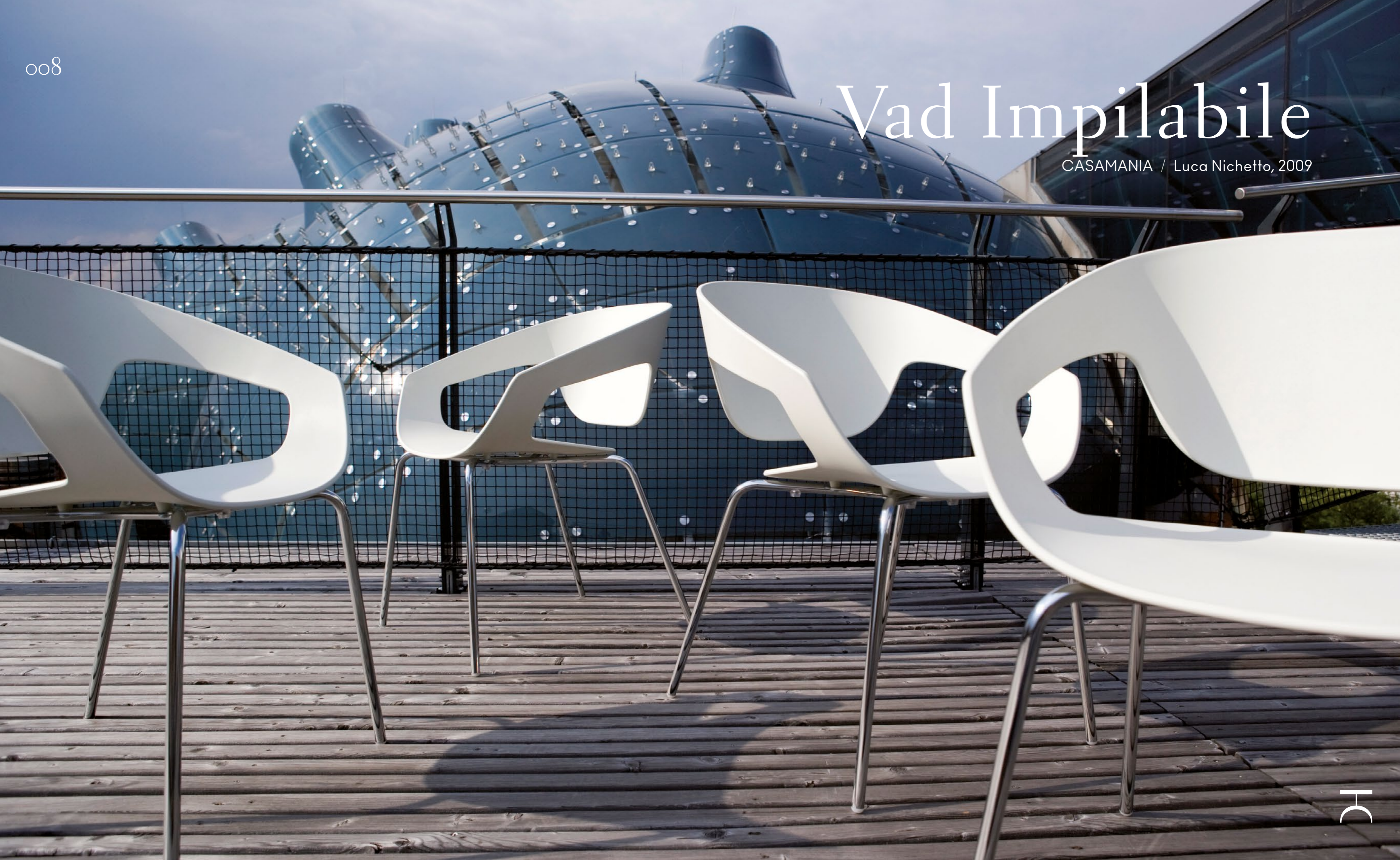


Vad Impilabile



Vad Impilabile

CASAMANIA / Luca Nichetto, 2009



Vad Impilabile *polipropilene*

Shell: Black Polypropylene
Legs: Black Metal
cm 61.5 x 62.5 x 78H (seat 43.5H)



- CHROME
- GREEN RAL 6013
- BEIGE RAL 7006
- GREY RAL 7037
- WHITE RAL 9016
- BLACK RAL 9011
- GREEN RAL 6013
- BEIGE RAL 7006
- GREY RAL 7037
- WHITE RAL 9016
- BLACK RAL 9011

Shell

Legs



Vad Impilabile
polipropilene

Shell: White Polypropylene
Legs: White Metal
cm 61.5 x 62.5 x 78H (seat 43.5H)

Tango table

Vad Impilabile
imbottita

Shell: Upholstered + Leather
Legs: Black Metal
cm 61.5 x 62.5 x 78H (seat 43.5H)



Vad Wood

CASAMANIA / Luca Nichetto, 2011

Vad Wood
polipropilene

Shell: Black Polypropylene
Legs: Natural Oak
cm 61.5 x 58 x 81H (seat 43.5H)

Bolero table



Vad Wood
polipropilene

Shell: Black Polypropylene
Legs: Natural Oak

cm 61.5 x 58 x 81H (seat 43.5H)



Vad Wood
polipropilene

Shell: Black Polypropylene
Legs: Walnut

cm 61.5 x 58 x 81H (seat 43.5H)

Vad Wood
polipropilene

Shell: White Polypropylene
Legs: Natural Oak
cm 61.5 x 58 x 81H (seat 43.5H)

Meduse table
Chariot side table



Vad Wood
cuoietto

Shell: Upholstered + Hard Leather Grade 2
Legs: Walnut
cm 61.5 x 58 x 81H (seat 43.5H)



Vad Wood
cuoietto

Shell: Upholstered + Hard Leather Grade 2
Legs: Natural Oak
cm 61.5 x 58 x 81H (seat 43.5H)

024

Vad Wood
imbottita

Shell: Upholstered + Fabric
Legs: Walnut
cm 61.5 x 58 x 81H
(seat 43.5H)



025



Vad Wood
imbottita

Shell: Upholstered + Fabric
Legs: Natural Oak
cm 61.5 x 58 x 81H
(seat 43.5H)

Vad Girevole

CASAMANIA / Luca Nichetto, 2011

Inventur
Werke aus der
Sammlung Herbert

Kunsthhaus Graz
10. Juni bis
03. September 2006

Teilnehmende KünstlerInnen

Carl Andre, Giovanni Anselmo, Art & Language, John Burt Foster, Robert Barry, Marcel Broodthaers, Stanley Brouwn, Dan Flavin, Jean-Marc Bustamante, André Cadere, Hanne Darboven, Jan Dibbets, Luciano Fabro, Gilbert & George, Dan Graham, Douglas Huebler, Donald Judd, On Kawara, Mike Kelley, Martin Kippenberger, Joseph Kosuth, Sol LeWitt, Richard Long, Mario Merz, Reinhard Mucha, Bruce Nauman, Giulio Paolini, A.R. Penck, Michelangelo Pistoletto, Gerhard Richter, Thomas Schütte, Robert Smithson, Niele Toroni, Jan Van Marcke, Didier Vermeiren, Lawrence Weiner, Franz West, Ian Wright, Heimo Zobernig





Vad Girevole
polipropilene

Shell: Black Polypropylene
Swivel Trestle: Black Metal
cm 61.5 x 58 x 82H (seat 45.5H)



Vad Girevole
polipropilene

Shell: White Polypropylene
Swivel Trestle: Chromed Metal
cm 61.5 x 58 x 82H (seat 45.5H)

030

Vad Girevole
imbottita

Shell: Upholstered + Fabric
Swivel Trestle: Chromed Metal
cm 61.5 x 58 x 82H (seat 45.5H)



031

Vad Girevole
imbottita

Shell: Upholstered + Faux Leather
Swivel Trestle: Black / Chromed Metal
cm 61.5 x 58 x 82H
(seat 45.5H)

Korzina wastepaper basket

034



Vad Girevole
imbottita

Shell: Upholstered + Faux Leather
Swivel Trestle: Black Metal

cm 61.5 x 58 x 82H
(seat 45.5H)

035

Vad Girevole
imbottita

Shell: Upholstered + Faux Leather
Swivel Trestle: Black Metal

cm 61.5 x 58 x 82H
(seat 45.5H)



HC

036



037



Projects





Vad Girevole
imbottita

Siena / Italia
Hotel Palazzetto Rosso

Shell: Upholstered
Legs: Chromed Metal



Vad Impilabile
polipropilene

Seoul / Corea del Sud
Lotte Duty Free Star Lounge Café

Shell: White Polypropylene
Legs: Black Metal



040

Vad Girevole *polipropilene*

Rovereto / Italia
Nerocubo Hotel

Shell: White Polypropylene
Legs: Chromed Metal

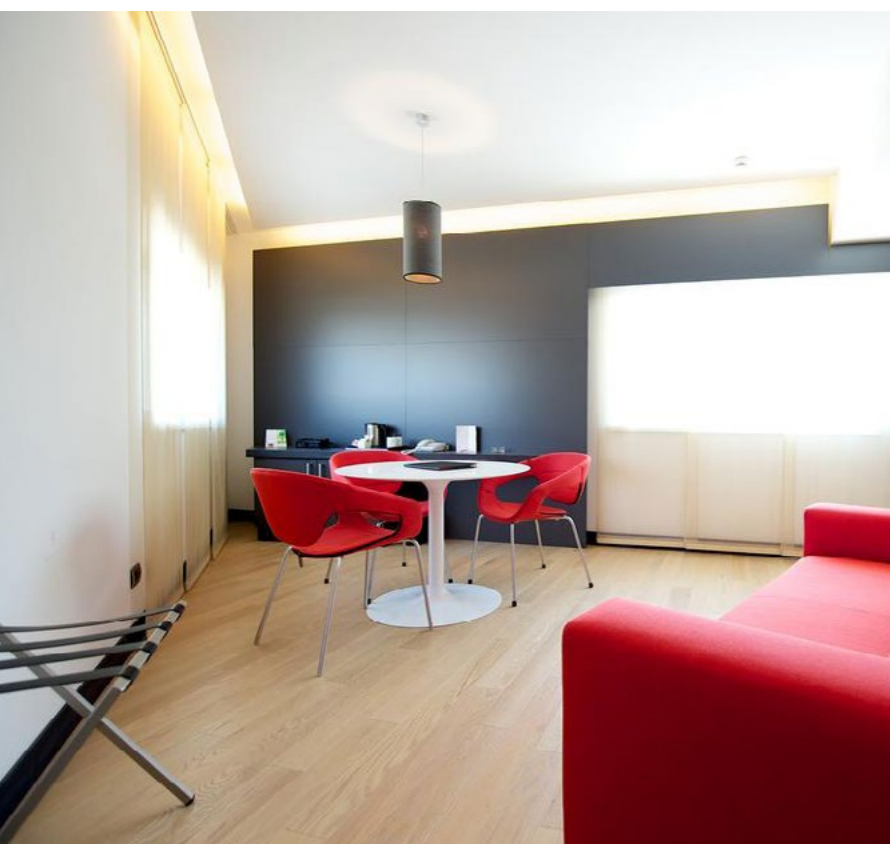


041

Vad Girevole *polipropilene*

Rovereto / Italia
Nerocubo Hotel

Shell: White Polypropylene
Legs: Chromed Metal



Vad Impilabile *imbottita*

Rovereto / Italia
Nerocubo Hotel

Shell: Upholstered
Legs: Chromed Metal



Vad Impilabile
polipropilene

Barcellona / Spagna
Hotel W

Shell: Green Polypropylene
Legs: Green Metal

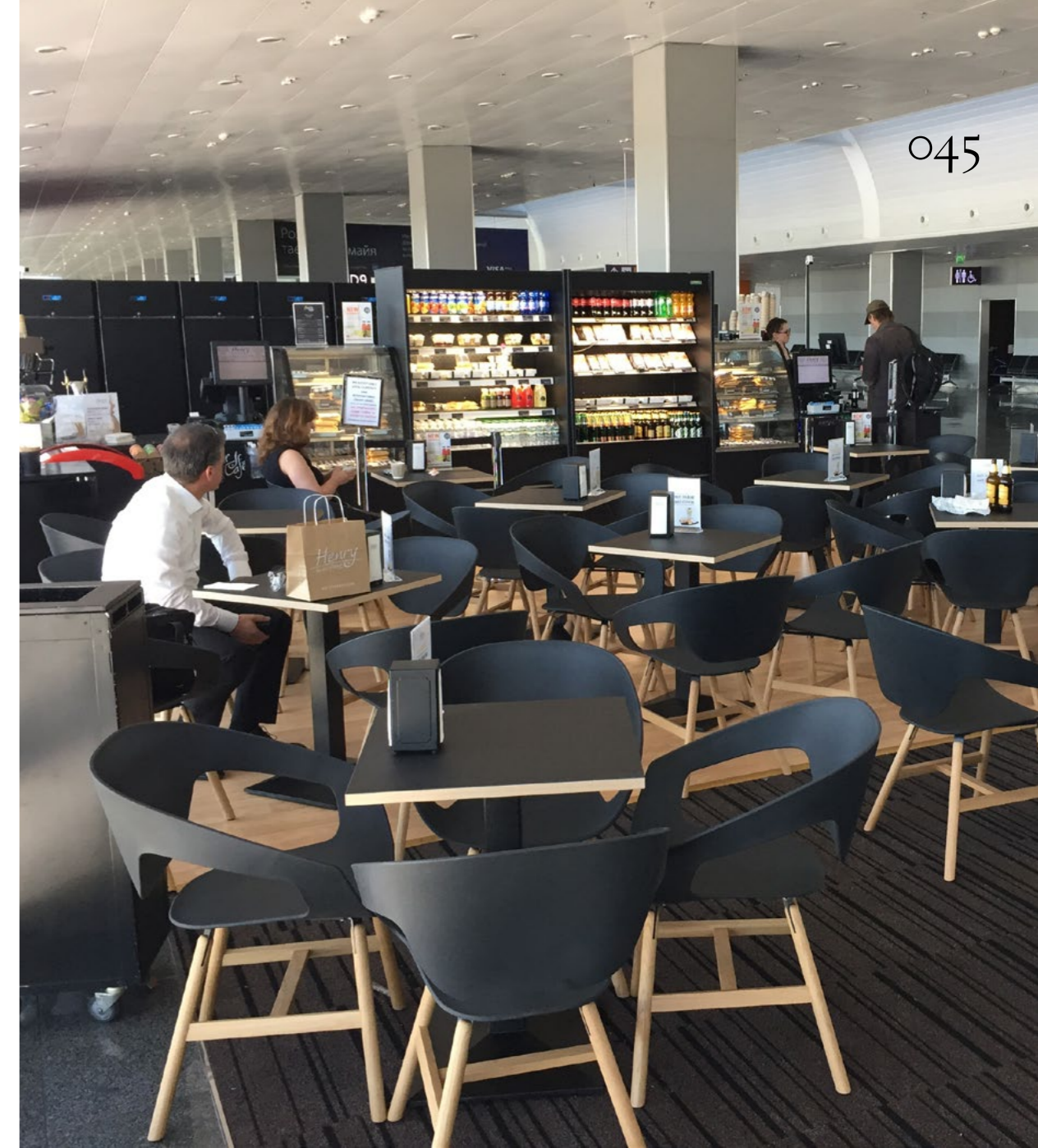




Vad Wood
polipropilene

Kiev / Ucraina
Henry Cafè

Shell: Black Polypropylene
Legs: Natural Oak





Vad Impilabile
polipropilene

Seul / Korea
Walkerhill Coex Restaurant

Shell: White Polypropylene
Legs : Chromed Metal

Vad Wood
imbottita

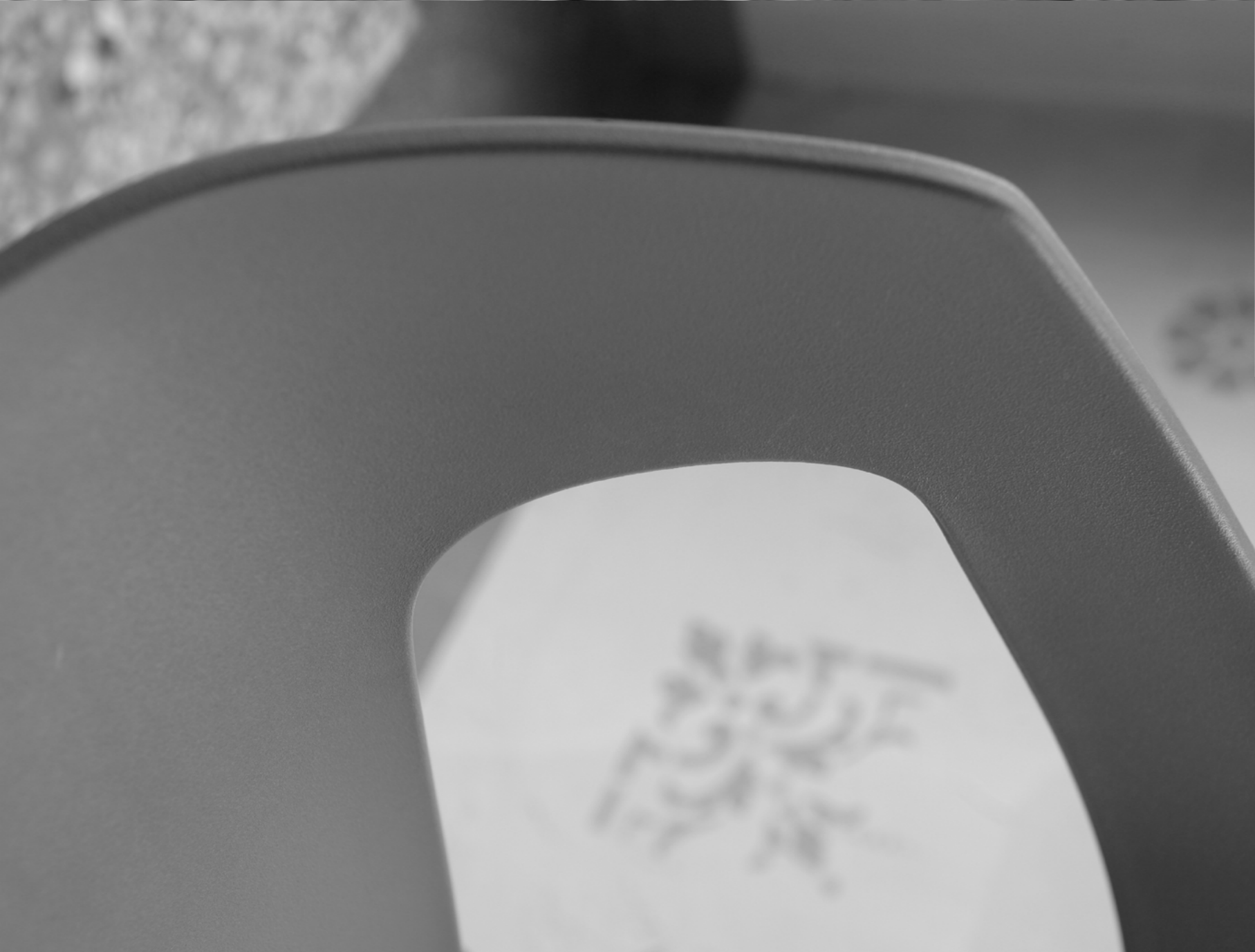
Parigi / Francia
Gecina Secondesk

Shell: Upholstered
Legs: Natural Oak





Tech info



Cuoietto

Vad Girevole



Vad Impilabile



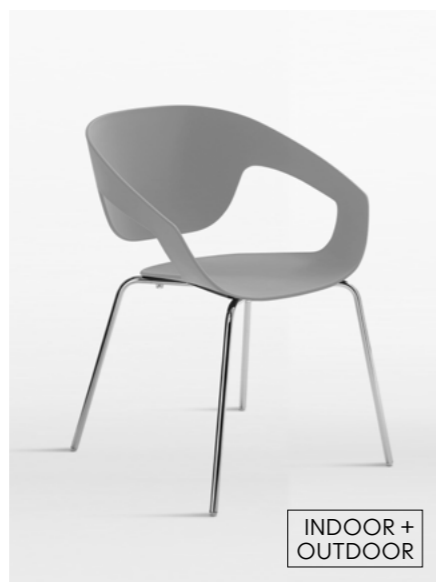
Vad Wood



Imbottita



Polipropilene



INDOOR +
OUTDOOR



Vad Girevole



Cuoietto

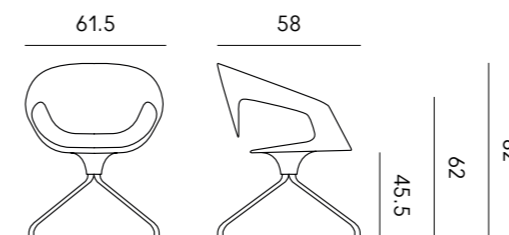
Swivel metal trestle and polypropylene shell, covered in leather grade 2, natural color.

Imbottita

Swivel metal trestle and polypropylene shell, upholstered in fabric, leather or faux leather.

Polipropilene

Swivel metal trestle and polypropylene shell.



Click to download samples

Cuoietto shell



Upholstered shell



Polypropylene shell



Legs



Vad Impilabile



Cuoietto

Legs in painted or chrome-plated metal. Shell in polypropylene, covered in leather grade 2, natural color.

Imbottita

Legs in painted or chrome-plated metal. Shell in polypropylene, upholstered in fabric, leather or faux leather.

Polipropilene

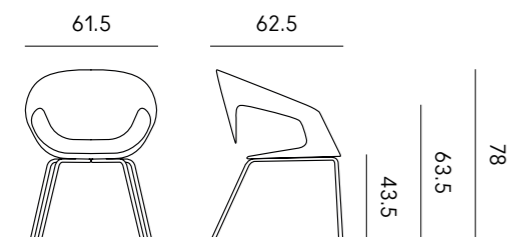
Legs in painted or chrome-plated metal, shell in polypropylene.

Outdoor:

> Painted legs

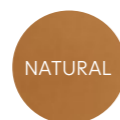


> Chromed legs



[Click to download samples](#)

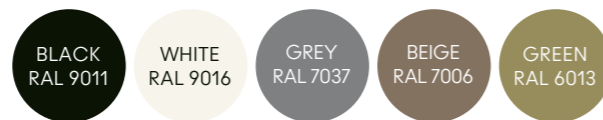
Cuoietto shell



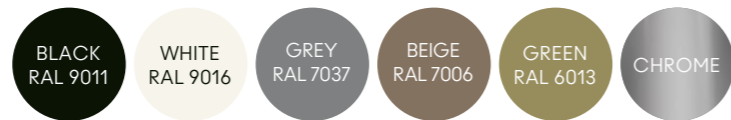
Upholstered shell



Polypropylene shell



Legs



Vad Wood



Cuoietto

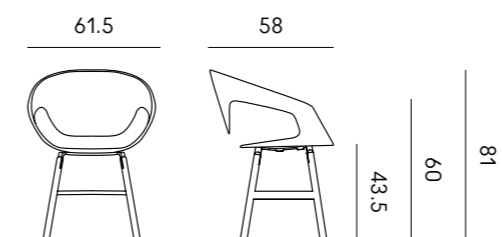
Solid wood leg (Natural Oak or Walnut). Shell in polypropylene, covered in leather grade 2, natural color.

Imbottita

Solid wood legs (Natural Oak or Walnut). Shell in polypropylene, upholstered in fabric, leather or faux leather.

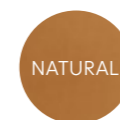
Polipropilene

Solid wood legs (Natural Oak or Walnut). Polypropylene shell.



[Click to download samples](#)

Cuoietto shell



Upholstered shell



Polypropylene shell



Legs



054 Legenda dei simboli / Key to symbols



Outdoor protetto

Prodotto adatto ad ambienti esterni protetti (es. verande coperte). Non adatto ad ambienti con presenza di pioggia, nebbia, rugiada o umidità persistente. È necessario il ricovero in area chiusa durante la notte. I prodotti realizzati con materiali naturali sono comunque soggetti a deterioramento.

Protected outdoor

Protected product suitable for protected outdoor areas (e.g. covered verandas). Not suitable for environments with rain, fog, dew or persistent humidity. Shelter in a closed area is necessary overnight. Products made from natural materials are however subject to deterioration.

Outdoor protégé

Produit adapté aux extérieurs protégés (par ex. vérandas couvertes). Ne convient pas aux environnements avec pluie, brouillard, rosée ou humidité persistante. Il est nécessaire de le rentrer dans une zone fermée pendant la nuit. Les produits fabriqués à partir de matériaux naturels peuvent, quoi qu'il en soit, se détériorer.

Geschützte Außenbereiche

Produkt, geeignet für geschützte Außenbereiche. Nicht geeignet für Umgebungen, die anhaltendem Regen, Nebel, Tau oder Feuchtigkeit ausgesetzt sind. Für die Nacht muss das Produkt in einen geschlossenen Bereich verlegt werden. Natürlichen Materialien unterliegen der Gefahr beschädigt zu werden.

Outdoor protegido

Producto apto para espacios externos protegidos (p. ej., verandas cubiertas). No apto para entornos con lluvia, niebla, rocío o humedad persistentes. Debe conservarse en lugar cerrado durante la noche. En todo caso, los productos realizados con materiales naturales están sujetos a deterioro.



Pioggia

Prodotto adatto ad ambienti esterni con precipitazioni atmosferiche normali. In caso di pioggia persistente è necessario il ricovero in area protetta. I prodotti realizzati con materiali naturali sono comunque soggetti a deterioramento.

Rain

Product suitable for outdoor environments with normal atmospheric precipitation. In case of persistent rain, shelter in a protected area is necessary. Products made from natural materials are however subject to deterioration.

Pluie

Produit adapté aux environnements extérieurs avec précipitations atmosphériques normales. En cas de pluie persistante, il est nécessaire de le rentrer dans une zone protégée. Les matériaux naturels peuvent, quoi qu'il en soit, se détériorer.

Regen

Das Produkt ist für Außenbereiche mit normalem Niederschlag geeignet. Bei anhaltendem Regen ist es notwendig, das Produkt in einen geschützten Bereich zu verlegen. Natürlichen Materialien unterliegen der Gefahr beschädigt zu werden.

Lluvia

Producto apto para espacios externos con precipitaciones normales. En caso de lluvia persistente se debe conservar en un área protegida. En todo caso, los productos realizados con materiales naturales están sujetos a deterioro.



Salsedine

Prodotto adatto ad aree marittime o con presenza di nebbia salina. Lavare frequentemente.

Seaside

Product suitable for sea areas or with salt spray. Wash frequently.

Bord de mer

Produit adapté aux zones maritimes ou en présence de brouillard salin. Laver fréquemment.

Am Meer

Für die Verwendung in Meernähe oder in Salznebel ausgesetzten Bereiche geeignet. Häufig waschen.

Orilla del mar

Producto apto para áreas marítimas con presencia de nieblas salinas. Lavar con frecuencia.



Impilabile

Prodotto realizzato per poter essere impilato.

Stackable

Product designed to be stacked.

Empilable

Produit conçu pour être empilé.

Stapelbar

Das Produkt ist zum Stapeln geeignet.

Apilable

Producto diseñado para ser apilado.

Art Director

Renato Zamberlan

Photos

Gianni Antoniali
/ Ikon Productions

except:

10, 11, 14, 15, 22, 26, 27
36 > 49



Tutti i prodotti illustrati in questo catalogo sono Made in Italy

All products illustrated in this catalogue are Made in Italy

Tous les produits illustrés dans ce catalogue sont Made in Italy

Alle produkte in diesem katalog sind Made in Italy

Todos los productos presentados en este catálogo son Made in Italy

Horm Italia Srl si riserva la facoltà di apportare, in qualunque momento e senza preavviso, modifiche e/o migliorie di carattere tecnico o estetico ai prodotti illustrati nel presente catalogo e declina ogni responsabilità per eventuali inesattezze contenute nello stesso. Le textures ed i colori dei materiali e delle finiture hanno valore indicativo in quanto soggetti alle tolleranze dei processi di stampa.

Horm Italia Srl reserves the right to make, at any time and without notice, technical or aesthetic changes and/or improvements to the products illustrated in this catalogue and declines all responsibility for any inaccuracies contained in it. Textures and colours of materials and finishes are indicative as they are subject to the tolerances of printing processes.

Horm Italia Srl se réserve le droit d'apporter, à tout moment et sans notification préalable, des modifications et/ou des améliorations de type technique ou esthétique aux produits illustrés dans le présent catalogue, et décline toute responsabilité pour les éventuelles inexacititudes contenues dans ce catalogue. Les textures et les couleurs des matériaux et des finitions sont une valeur indicative parce-que ils changent selon la tolérance aux procès d'imprimerie.

Horm Italia Srl behält sich das Recht vor, jederzeit und ohne vorherige, Ankündigung Änderungen und/oder technische Verbesserungen an den im vorliegenden Katalog dargestellten Produkten vorzunehmen, und übernimmt keine Verantwortung für eventuelle Ungenauigkeiten. Die Texturen und Farben der Materialien und Finish haben einen indicativen Wert, da sie von den Toleranzen im Druckprozess abhängig sind.

Horm Italia Srl se reserva la facultad de aportar, en cualquier momento y sin previo aviso, cambios y mejoras de carácter técnico o estético a los productos ilustrados en este catálogo, y se exime de toda responsabilidad por cualesquiera inexactitudes que éste catálogo pueda contener. Las textures y los colores de los materiales y de los acabados tienen solo un valor indicativo porque están sujetos a la tolerancia de los procesos de imprenta.

Horm, Casamania and Orizzonti Italia are registered trademarks of:

Horm Italia Srl
via Antonio Carpenè, 17
33070 Brugnera (PN)
Italy

International
Sales Desk
orders@horm.it
Tel. +39 0434 1979101

Ufficio Commerciale
Italia
ordini@horm.it
Tel. +39 0434 1979102

horm.it
casamania.it
orizzontiitalia.it

#HormDesign
#Casamania
#HormCasamania

© Horm Italia Srl

