

# MIDJ



## Japan S suspension

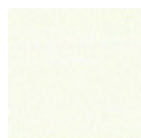
Japan suspension lamp. The lampshade is made of metal lacquered in black and white. The lamps of the Japan collection are available in three different sizes, which can be combined with each other in group structures.

The electric suspension cable is covered with black silk with a length of 2.5 m. Black or white metal ceiling rose. Available canopy decentralization kit and multiple canopy to create compositions up to six suspensions.

The lampshade of the Japan lamp recalls the conical shape of the straw hat typical of Asian displays, while the chromed rod recalls the rods used by women to collect their hair.

### Colors and Materials

#### Structure



White steel



Black steel

### Dimensions



	cm	inch
A	30	11.8
B	20	7.9
C	20	7.9

### Volumetric Details

Weight 1.5 Kg  
Volume 0.023 mc  
Package 1

### Certifications



CE



Classe I

# MIDJ



## Japan M suspension

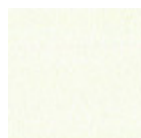
Japan direct light suspension lamp. The lampshade is made of metal lacquered in black and white. The lamps of the Japan collection are available in three different sizes, which can be combined with each other in group structures.

The electric suspension cable is covered with black silk with a length of 2.5 m. Black or white metal ceiling rose. Available canopy decentralization kit and multiple canopy to create compositions up to six suspensions.

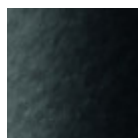
The lampshade of the Japan lamp recalls the conical shape of the straw hat typical of Asian displays, while the chromed rod recalls the rods used by women to collect their hair.

## Colors and Materials

### Structure



White steel



Black steel

## Dimensions



	cm	inch
A	23	9
B	25	9.8
C	25	9.8

## Volumetric Details

Weight 1.6 Kg  
Volume 0.033 mc  
Package 1

## Certifications



CE



Classe I

# MIDJ



## Japan L suspension

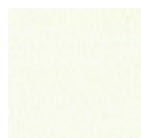
Japn direct light suspension lamp. The lampshade is made of metal lacquered in black and white. The lamps of the Japan collection are available in three different sizes, which can be combined with each other in group structures.

The electric suspension cable is covered with black silk with a length of 2.5 m. Black or white metal ceiling rose. Available canopy decentralization kit and multiple canopy to create compositions up to six suspensions.

The lampshade of the Japan lamp recalls the conical shape of the straw hat typical of Asian displays, while the chromed rod recalls the rods used by women to collect their hair.

## Colors and Materials

### Structure



White steel



Black steel

## Dimensions



	cm	inch
A	18	7.1
B	42	16.5
C	42	16.5

## Volumetric Details

Weight 2.5 Kg  
Volume 0.06 mc  
Package 1

## Certifications



CE



Classe I