

MIDJ

Dalia PB L_N TS Armchair

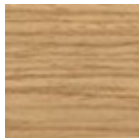
design Beatriz Sempere, 2017

Dalia armchair with low backrest and wooden base. Seat upholstered in fabric, leather or faux leather.

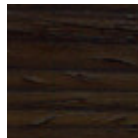


Colors and Materials

Structure



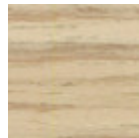
Lacquered ash
11 Colors



Veneered ash dark oak



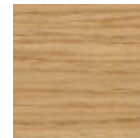
White lacquered veneered ash



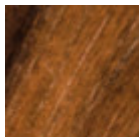
Veneered ash natural finish



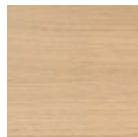
Black lacquered veneered ash



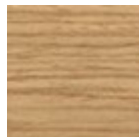
Veneered ash natural oak finish



Veneered flamed walnut



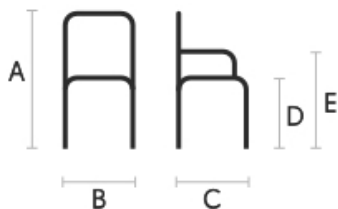
Natural oak veneered



Stained ash veneered

10 Colors

Dimensions



	cm	inch
A	86	33.9
B	58	22.8
C	58	22.8
D	46	18.1
E	65	25.6

Volumetric Details

Weight 10.8 Kg
Volume 0.35 mc
Package 1

MIDJ



Dalia PB M_T TS Armchair

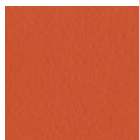
design Beatriz Sempere, 2017

Dalia armchair with low backrest and sled base in lacquered metal.

Shell upholstered in leather, faux leather and fabric.

Colors and Materials

Structure



Papaya orange steel



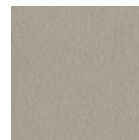
Light blue metal



White steel



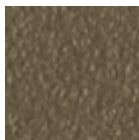
Bronze metal



Ash grey metal



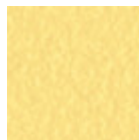
Sand steel



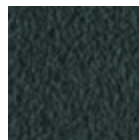
Fango steel



Golden yellow metal



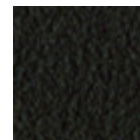
Pastel yellow steel



Grafite metal



Light grey steel



Brown steel



Black steel



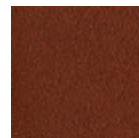
Ocher steel



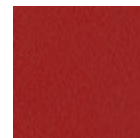
Facepowder pink metal



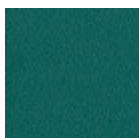
Red steel



Bulgaro red metal



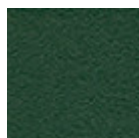
Cherry red metal



Pine green steel

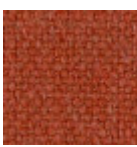


Sage green metal

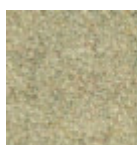


Dark green metal

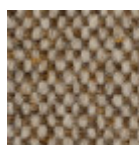
Coating

**Cotton Club fabric**

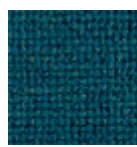
14 Colors

**Fenix Wool fabric**

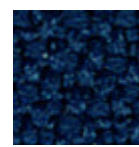
16 Colors

**Main Line Flax fabric**

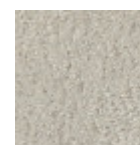
16 Colors

**Manhattan fabric**

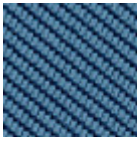
13 Colors

**Mirage fabric**

15 Colors

**Novabuk fabric**

17 Colors

**Tessuto Oceanic**

13 Colors

**Remix 3 fabric**

19 Colors

**Second fabric**

11 Colors

**Velvet Superb**

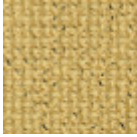
15 Colors

**Uniform Melange Fabric**

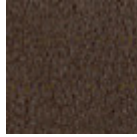
7 Colors

**Visual fabric**

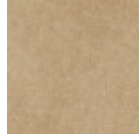
13 Colors

**Yoredale fabric**

14 Colors

**Vintage leather**

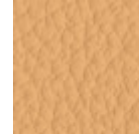
8 Colors

**Vintage faux leather**

12 Colors

**Secret faux leather**

23 Colors

**Fiore leather**

21 Colors

Dimensions



	cm	inch
A	85	33.5
B	57	22.4
C	58	22.8
D	46	18.1
E	65	25.6

Volumetric Details

Weight 11.4 Kg**Volume** 0.35 mc**Package** 1

Downloads

[.3ds Dalia PB M_T TS \(zip\)](https://www.midj.com/images/uploads/resources/3d-midj-dalia-pb-m-ts-t-3ds.zip) - <https://www.midj.com/images/uploads/resources/3d-midj-dalia-pb-m-ts-t-3ds.zip>[.dae Dalia PB M_T TS \(zip\)](https://www.midj.com/images/uploads/resources/3d-midj-dalia-pb-m-ts-t-dae.zip) - <https://www.midj.com/images/uploads/resources/3d-midj-dalia-pb-m-ts-t-dae.zip>[.dxf Dalia PB M_T TS \(zip\)](https://www.midj.com/images/uploads/resources/3d-midj-dalia-pb-m-ts-t-dxf.zip) - <https://www.midj.com/images/uploads/resources/3d-midj-dalia-pb-m-ts-t-dxf.zip>[.obj Dalia PB M_T TS \(zip\)](https://www.midj.com/images/uploads/resources/3d-midj-dalia-pb-m-ts-t-obj.zip) - <https://www.midj.com/images/uploads/resources/3d-midj-dalia-pb-m-ts-t-obj.zip>[.stl Dalia PB M_T TS \(zip\)](https://www.midj.com/images/uploads/resources/3d-midj-dalia-pb-m-ts-t-stl.zip) - <https://www.midj.com/images/uploads/resources/3d-midj-dalia-pb-m-ts-t-stl.zip>

Materials Certifications

Dark green metal

The technologies used in the previous phase of powder coating play a fundamental role in the final result of the processing. They are in fact essential to increase adherence paint on the metal surface and then guarantee its duration over time. The metal frames, following a total cleaning of the surface, pass through chemical conversion processes, creating a compact base that allows for better adhesion of the subsequent treatment. In the last phase the object subjected to the powder coating process is placed in a polymerization oven, going to form an adherent and extremely tight layer durable. This particular paint job is ideal for outdoor use.

To clean the surface, use a damp microfiber cloth with neutral soap or specific metal cleaning products. Avoid hitting or rubbing the surface with sharp objects. Do not use scourers or other abrasive materials, since they would inevitably scratch the surface. Do not leave rusty iron objects on the surface for too long.

These surface treatments are not suitable for outdoor use, but they guarantee excellent resistance to

MIDJ



Dalia PB M_Q TS Armchair

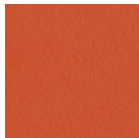
design Beatriz Sempere, 2017

Dalia armchair with low backrest and four leg base in lacquered metal.

Shell upholstered in leather, faux leather or fabric.

Colors and Materials

Structure



Papaya orange steel



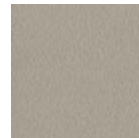
Light blue metal



White steel



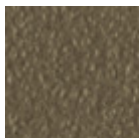
Bronze metal



Ash grey metal



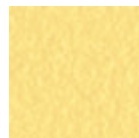
Sand steel



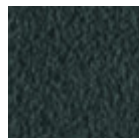
Fango steel



Golden yellow metal



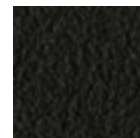
Pastel yellow steel



Grafite metal



Light grey steel



Brown steel



Black steel



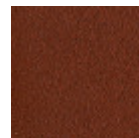
Ocher steel



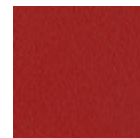
Facepowder pink metal



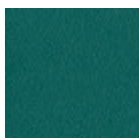
Red steel



Bulgaro red metal



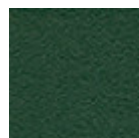
Cherry red metal



Pine green steel



Sage green metal

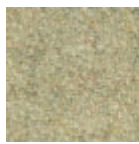


Dark green metal

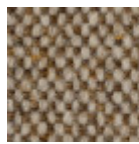
Coating



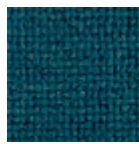
Cotton Club fabric
14 Colors



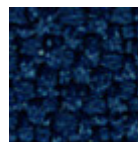
Fenix Wool fabric
16 Colors



Main Line Flax fabric
16 Colors



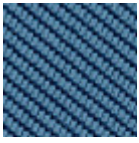
Manhattan fabric
13 Colors



Mirage fabric
15 Colors



Novabuk fabric
17 Colors



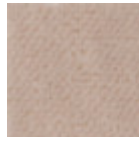
Tessuto Oceanic
13 Colors



Remix 3 fabric
19 Colors



Second fabric
11 Colors



Velvet Superb
15 Colors



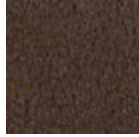
Uniform Melange Fabric
7 Colors



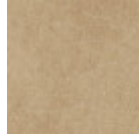
Visual fabric
13 Colors



Yoredale fabric
14 Colors



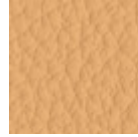
Vintage leather
8 Colors



Vintage faux leather
12 Colors



Secret faux leather
23 Colors



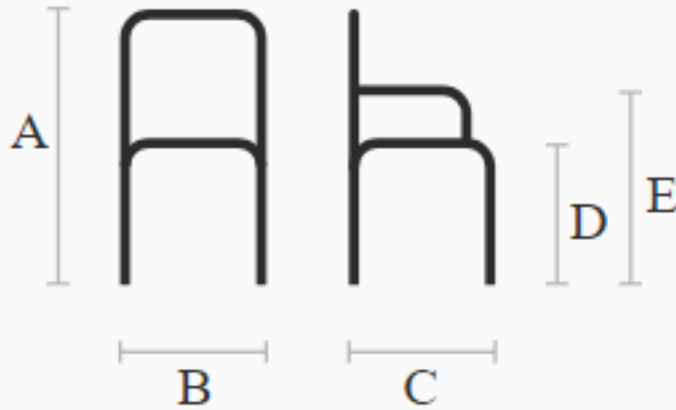
Fiore leather
21 Colors

Volumetric Details

Weight 11.5 Kg

Volume 0.34 mc

Package 1



A (cm)
(inch)

B (cm)
(inch)

C (cm)
(inch)

D (cm)
(inch)

E (cm)
(inch)

83
32.7

57
22.4

58
22.8

46
18.1

64
25.2