

100%  
Made in  
Italy

**Antonello**italia

# INFINITY

Design: Gino Carollo

Il tavolo Infinity rappresenta l'eleganza senza tempo e la funzionalità del cristallo temperato qui abbinato all'alluminio lucido, materiali che sanno dare una precisa risposta alle esigenze tecniche ed estetiche. L'unione della forza e dell'eleganza portano lo stile verso sensazioni esclusive.

The Infinity table is a symbol of timeless elegance and functionality. Matching tempered glass with shining aluminium, the materials perfectly satisfy technique and harmony. The style of this table combines force with elegance, creating an exclusive sensation.

**INFINITY**  
cm 180/280x100x76 h

Tavolo allungabile, piano e allunghe in cristallo temperato 12 mm. Gambe in alluminio, alluminio impiallacciato legno o rivestite cuoio. Meccanismo centrale di allunga in alluminio lucido.

Extendible table, tempered glass top and extensions 12 mm. Aluminium, wood veneered aluminium or hide leather covered legs. Extension central mechanism in shining aluminium.

**VITTORIA**  
sedia\_chair pag 130





**INFINITY**  
cm 180/280x100x76 h

Tavolo allungabile, piano e allunghe in cristallo temperato 12 mm. Gambe in alluminio, alluminio impiallacciato legno o rivestite cuoio. Meccanismo centrale di allunga in alluminio lucido.

Extendible table, tempered glass top and extensions 12 mm. Aluminium, wood veneered aluminium or hide leather covered legs. Extension central mechanism in shining aluminium.

**VITTORIA**  
sedia\_chair pag 130



**INFINITY**  
cm 180/280x100x76 h

Tavolo allungabile, piano e allunghe in cristallo temperato 12 mm. Gambe in alluminio, alluminio impiallacciato legno o rivestite cuoio. Meccanismo centrale di allunga in alluminio lucido.

Extendible table, tempered glass top and extensions 12 mm. Aluminium, wood veneered aluminium or hide leather covered legs. Extension central mechanism in shining aluminium.

**ALTEA**  
sedia\_chair pag 158

**PLAZA**  
libreria\_bookcase pag 282

**ALEXIA**  
madia\_sideboard pag 238

# CAMPIONARIO

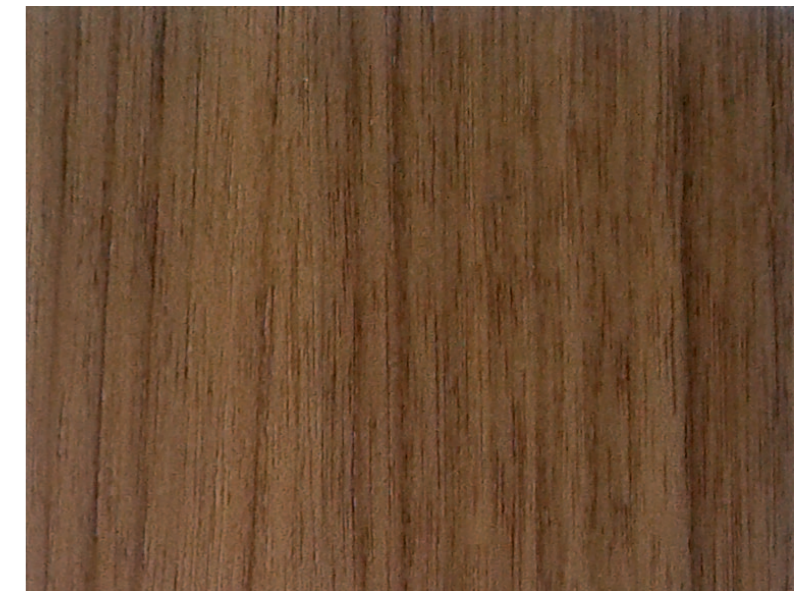
Antonelloitalia si riserva di apportare, senza preavviso, modifiche nei materiali, nelle finiture e nei disegni dei prodotti presentati in questo catalogo. Le texture ed i colori dei materiali e delle finiture hanno valore indicativo in quanto soggetti alle tolleranze dei processi di stampa.

Antonelloitalia reserves the right to change, without previous notice, materials, finishes and product designs presented in this catalogue. The textures and the colours of materials and finishes are indicative as they are depending on the tolerances of the printing process.

## LEGNI E CERAMICHE WOOD AND CERAMIC



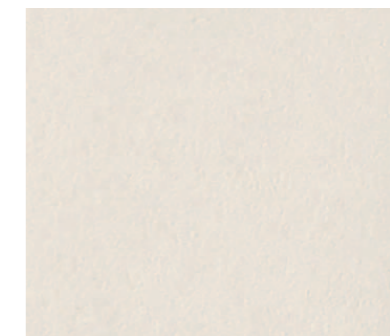
Wengè\_Wengè



Noce Canaletto\_Canaletto Walnut



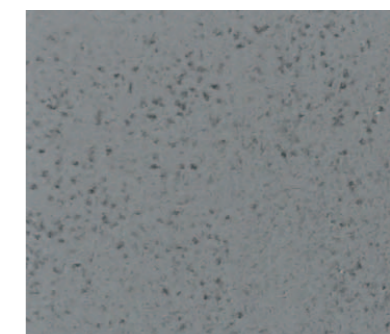
Rovere Grigio\_Grey Oak



Collection Bianco **7072**  
White Collection 7072



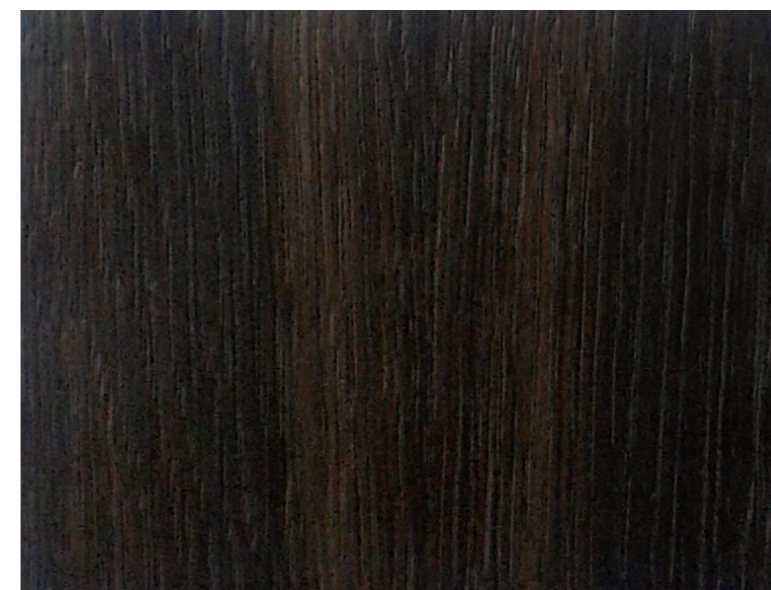
Oxide Bronzo **7074**  
Bronze Oxide 7074



Blend Grigio **7075**  
Grey Blend 7075



Blend Nero **7076**  
Black Blend 7076



Rovere Affumicato\_Smoked Oak



Ossidiana **7077**  
Ossidiana 7077

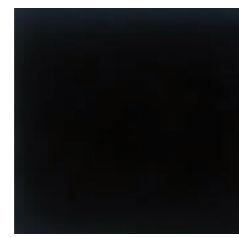


Collection Nero **7078**  
Black Collection 7078

LACCATI LUCIDI  
SHINING LACQUERED WOOD



Grigio Scuro **1022**  
Dark Grey



Nero **1073**  
Black



Rosso **1089**  
Red



Verde **1063**  
Green

Bianco\_White 1071  
Crema\_Cream 1092  
Tortora\_Dove Grey 1079  
Fango\_Mud 1006  
Moka\_Dark Brown 1091  
Grigio Chiaro\_Light Grey 1030  
Cenere\_Ash Grey 1033

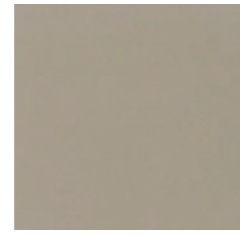
LACCATI OPACHI  
MATT LACQUERED WOOD



Bianco **4071**  
White



Crema **4092**  
Cream



Tortora **4079**  
Dove Grey



Fango **4006**  
Mud

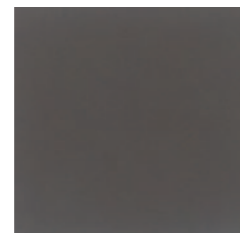
Grigio Scuro\_Dark Grey 4022  
Nero\_Black 4073  
Rosso\_Red 4089  
Verde\_Green 4063



Moka **4091**  
Dark Brown



Grigio Chiaro **4030**  
Light Grey

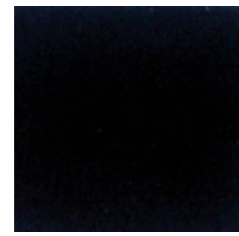


Cenere **4033**  
Ash Grey

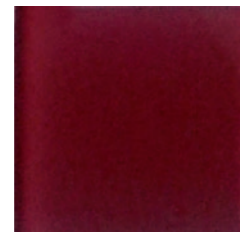
CRISTALLI VERNICIATI LUCIDI  
SHINING PAINTED GLASS



Grigio Scuro **3022**  
Dark Grey



Nero **3073**  
Black



Rosso **3089**  
Red



Verde **3063**  
Green

Bianco\_White 3071  
Crema\_Cream 3092  
Tortora\_Dove Grey 3079  
Fango\_Mud 3006  
Moka\_Dark Brown 3091  
Grigio Chiaro\_Light Grey 3030  
Cenere\_Ash Grey 3033

CRISTALLI ACIDATI VERNICIATI OPACHI  
MATT PAINTED SATINED GLASS



Bianco **5071**  
White



Crema **5092**  
Cream



Tortora **5079**  
Dove Grey



Fango **5006**  
Mud

Grigio Scuro\_Dark Grey 5022  
Nero\_Black 5073  
Rosso\_Red 5089  
Verde\_Green 5063



Moka **5091**  
Dark Brown



Grigio Chiaro **5030**  
Light Grey

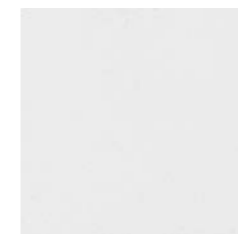


Cenere **5033**  
Ash Grey



Fumé  
Fumé

METALLI  
METAL



Bianco Opaco **M10**  
Matt White



Nero Opaco **M5**  
Matt Black



Tortora Opaco **M7**  
Matt Dove Grey



Cenere Opaco **M24**  
Matt Ash Grey



Alluminio Anodizzato **M12**  
Anodized Aluminium



Alluminio Lucido **M14**  
Shining Aluminium



Alluminio Bronzo **M20**  
Bronze Aluminium

CUOIO  
HIDE LEATHER



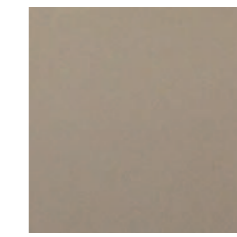
Bianco **71**  
White



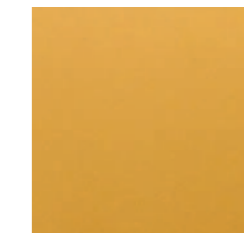
Crema **68**  
Cream



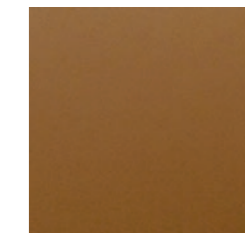
Aorio **12**  
Ivory



Tortora **79**  
Dove Grey



Giallo **95**  
Yellow



Naturale **32**  
Natural



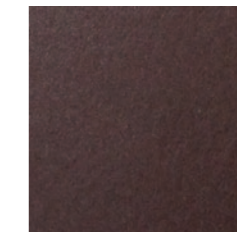
Mattone **16**  
Brick Red



Marrone **20**  
Brown



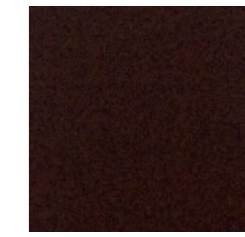
Argento **96**  
Silver



Bronzo **31**  
Bronze



Odra Bruno **38**  
Brown Ochre



T. di Moro **91**  
Dark Brown



Grigio Chiaro **30**  
Light Grey



Grigio Piombo **37**  
Lead Grey



Ardesia **26**  
Slate



Nero **73**  
Black



Arancione **64**  
Orange



Rosso **89**  
Red

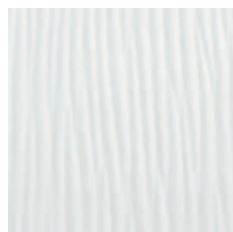


Bordeaux **70**  
Bordeaux



Verde **63**  
Green

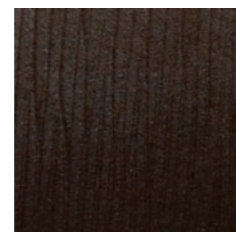
CUOIO STAMPATO  
STAMPED HIDE LEATHER



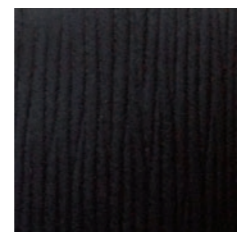
Bianco PA01  
White



Avorio PA02  
Ivory



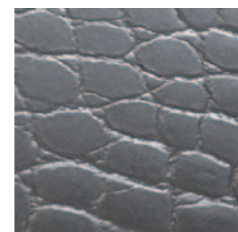
T. di Moro PA03  
Dark Brown



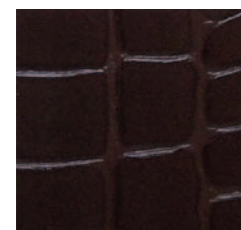
Nero PA04  
Black



Bianco 42  
White



Argento 44  
Silver



T. di Moro 45  
Dark Brown



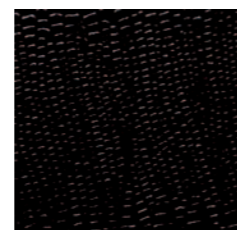
Nero 47  
Black



Bianco SE01  
White

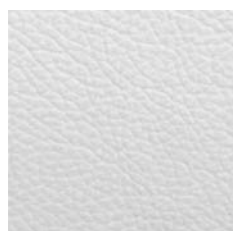


Grigio SE04  
Grey

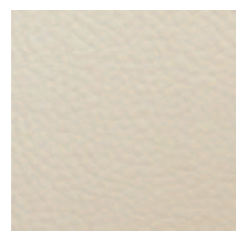


Nero SE03  
Black

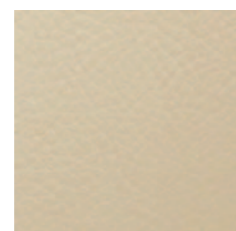
PELLE  
SOFT LEATHER



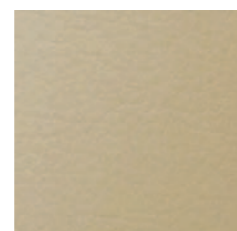
Bianco A000  
White



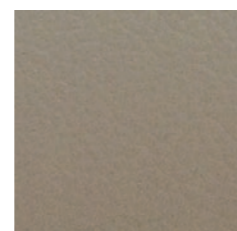
Bianco Panna A130  
Creamy White



Crema A028  
Cream



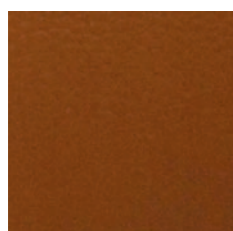
Avorio A250  
Ivory



Tortora A264  
Dove Grey



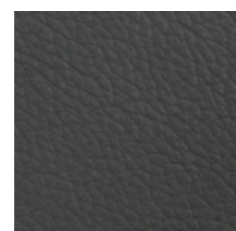
Giallo A260  
Yellow



Naturale A060  
Natural



Grigio Chiaro A290  
Light Grey



Ardesia A275  
Slate



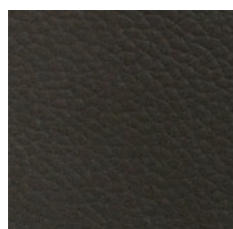
Bronzo A380  
Bronze



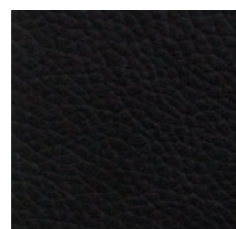
Ocra Bruno A325  
Brown Ochre



Marrone A340  
Brown



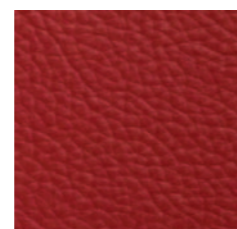
T. di Moro A330  
Dark Brown



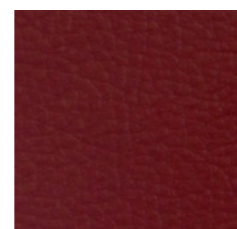
Nero A150  
Black



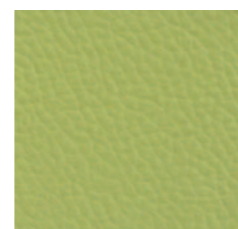
Arancione A230  
Orange



Rosso A090  
Red



Bordeaux A200  
Bordeaux



Verde A220  
Green

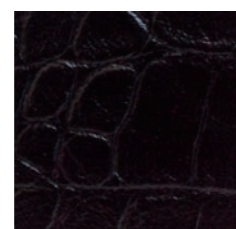
PELLE STAMPATA  
STAMPED LEATHER



Bianco PC000  
White



T. di Moro PC330  
Dark Brown



Nero PC150  
Black

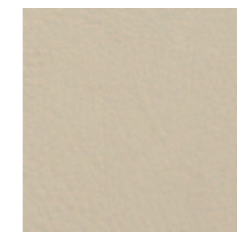
ECOPELLE  
SYNTHETIC LEATHER



Bianco SI 01  
White



Crema SI 02  
Cream



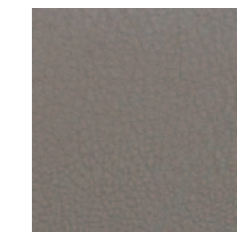
Avorio SI 04  
Ivory



Giallo SI 11  
Yellow



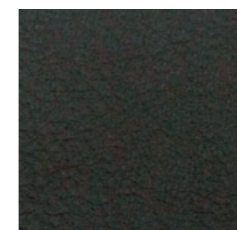
Tortora SI 05  
Dove Grey



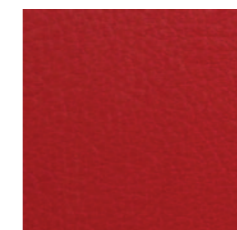
Fango SI 26  
Mud



Marrone SI 07  
Brown



T. di Moro SI 08  
Dark Brown



Rosso SI 13  
Red



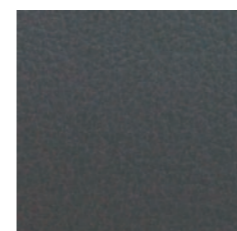
Verde SI 17  
Green



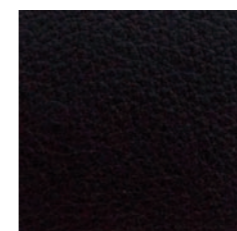
Verde Oliva SI 18  
Olive Green



Grigio Chiaro SI 36  
Light Grey



Grigio SI 23  
Grey



Nero SI 24  
Black

**Cuoio, Pelle e Ecopelle \_ Hide leather, Soft leather and Synthetic leather \_ Cuir, Cuir mince et Synthétique \_ Cuero, Piel y Sintética \_ Leder, Weichleder und Synthetisches Weichleder**

**IT - PULIZIA E MANUTENZIONE**

Per la normale pulizia utilizzare solamente un panno morbido e asciutto. Eventuali macchie si possono eliminare agendo con un panno umido e utilizzando prodotti neutri. Non usare solventi (es. alcool). Solo per macchie più resistenti utilizzare prodotti specifici per la pelle facendo inizialmente una prova in una zona non visibile per verificarne l'efficacia.

Attenzione: i colori dei campioni sono indicativi e si possono riscontrare lievi tolleranze tra i campioni ed i prodotti finiti.

**EN - CLEANING AND MAINTENANCE**

Dust with a soft and dry cloth for the normal clearing. Any stains can be removed with a wet cloth and using delicate products. Do not use solvents (i.e. alcohol). Only for more resistant stains use specific products for the soft leather making an initially test on a not visible area to verify its effectiveness.

Warning: since the samples colors are indicative, you can find light tolerances between samples and final products.

**FR - NETTOYAGE ET ENTRETIEN DU CUIR**

Pour un nettoyage normal, n'utiliser qu'un chiffon doux et sec. Les éventuelles tâches peuvent s'enlever à l'aide d'un tissu humide et en utilisant des produits neutres. Ne pas utiliser de solvants (par exemple alcool). Pour les taches les plus résistantes, utiliser des produits spécifiques pour le cuir en ayant auparavant fait un test sur une zone non apparente pour en vérifier l'efficacité.

Attention: les couleurs des échantillons ne sont qu'indicatives et des légères différences peuvent apparaître entre les échantillons et les produits finis.

**ES - LIMPIEZA Y MANTENIMIENTO**

Para su limpieza, utilizar un paño de algodón seco. Para otras manchas, utilizar un paño mojado y productos neutros. Nunca utilizar disolventes (por ejemplo el alcohol). Solo para manchas más difíciles emplear productos específicos para la piel haciendo una prueba inicial sobre una zona no visible para verificar la eficacia.

Atención: los colores del muestrario son indicativos y pueden tener muy ligeras variaciones entre la muestra y el producto final.

**DE - LEDERPFLEGE**

Benutzen ein weiches und trockenes Tuch für die normale Reinigung. Stärke Flecke müssen mit einem Neutralprodukt behandelt und mit einem sauberen Tuch nachgerieben. Benutzen Sie kein Lösungsmittel (z.B. Alkohol). Nur für mehr widerstandsfähige Flecke gebrauchen spezifische Produkte für das weiche Leder, das zuerst Test auf nicht sichtbares Gebiet macht, um sein Wirksamkeit nachzuprüfen.

Achtung: Die Musterfarben sind ungefähr und es können leichte Toleranzen zwischen Musterfarben und den fertigen Waren auftreten.

**Ecopelle \_ Synthetic leather \_ Cuir mince synthétique \_ Piel Sintética \_ Synthetisches Weichleder**

**IT** - L'ecopelle è un prodotto Made in Italy e ha superato le sottoelencate prove per la resistenza alla fiamma secondo gli standard europei.  
EN 1021-2/93-BS 5852-1/79-BS 5852/90 Sezione 4-crib5  
UNI 9175/87 E 9175 FA-1/94 CLASSE 1.IM

**EN** - The synthetic leather is a Made in Italy product and it passed the here below tests concerning the fire resistance according to the European standards.  
EN 1021-2/93-BS 5852-1/79-BS 5852/90 Section 4-crib5  
UNI 9175/87 E 9175 FA-1/94 CLASS 1.IM

**FR** - Le cuir mince synthétique est un produit Made in Italy et a passé les tests de résistance au feu selon les normes européennes (ci-dessous indiqués).  
EN 1021-2/93-BS 5852-1/79-BS 5852/90 Section 4-crib5  
UNI 9175/87 E 9175 FA-1/94 CLASSE 1.IM

**ES** - La piel sintética es un producto Made in Italy que ha superado las pruebas que se enumeran a continuación de resistencia a la llama según las normas europeas.  
EN 1021-2/93-BS 5852-1/79-BS 5852/90 Sección 4-CRIB5  
UNI 9175/87 E 9175 FA-1/94 CLASE 1.IM

**DE** - Das synthetische Weichleder ist ein Produkt Made in Italy und hat die unten genannten Prüfungen für Flammwidrigkeit nach europäischen Standards bestanden.  
EN 1021-2/93-BS 5852-1/79-BS 5852/90 Abschnitt 4-CRIB5  
UNI 9175/87 E 9175 FA-1/94 CLASS 1.IM

