

Disney
FROZEN II

Exquisite Elements
JEWELRY

32-PAGE BOOK
with
STEP-BY-STEP
INSTRUCTIONS
AND THE
FROZEN 2 STORY



make it real™

Let's meet
OUR
FAVORITE *Characters*

It's fall in Arendelle.
The leaves are changing
colors, the air is brisk
and our favorite
characters are about to
embark on a big journey.

More *adventures* to come...



Table of contents

ELSA	2
ANNA	4
OLAF, KRISTOFF & SVEN	6
KIT CONTENTS	8
CRAFTING OVERVIEW	9
ELSA BRACELET	10
ANNA BRACELET	12
OLAF BRACELET	15
ELEMENTS SECTION	18
WIND AND FIRE SPIRITS	22
WATER SPIRIT	23
EARTH SPIRITS	24
WATER AND WIND BRACELETS	25
EARTH AND FIRE BRACELETS	28
BRIDGE ELEMENT BRACELET	31

Let's get
STARTED



ELSA
HAS THE
magical
power
OF
snow
AND
ice.



Elsa

Elsa, Queen of Arendelle, is known for her magical power of snow and ice. She's happy to be loved and accepted by her kingdom, but somewhere out there, a voice beckons her on a big adventure with Anna, Kristoff, Sven and Olaf.

This *adventure* will put her magical power to the test and perhaps reveal why she was born with it.

ANNA
IS
bold, bright
AND FULL OF
positivity





Anna

This is Anna, Princess of Arendelle and Elsa's beloved sister. Anna is optimistic, funny and always looks out for her sister—even if it means going on a new adventure. Anna is happily in love with Kristoff and has found her forever family with him, Sven, Olaf and of course, Elsa.





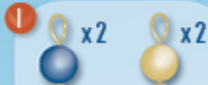
Olaf, Kristoff and Sven

Olaf is a loveable, huggable, happy snowman. His fascination with the world around him teaches others to appreciate everything about life. He learned to read and now loves telling everyone random facts!

This is Kristoff, a former ice harvester by trade, who has found love and a family with Anna, Elsa, Olaf and his reindeer pal, Sven.

Sven has been a companion to Kristoff since they were both young. Kristoff understands what Sven is trying to say through his expressions and movements and sometimes even voices Sven's thoughts.

Together, this incomparable trio will make the epic journey with Anna and Elsa to the Enchanted Forest.



What YOU'LL NEED:

- PLIERS
- SCISSORS
- ADHESIVE TAPE
- RULER
- PIECE OF PAPER
- PENCIL



What's INSIDE THE Kit

This kit contains everything you need to create 8 bracelets

CONTENTS

- A** 8 SPECIAL FROZEN CHARMS
- B** 6 COLORED OF FAUX-SUEDE LACE
- C** 2 LOBSTER CLAPS
- D** 2 CRIMP END CAPS
- E** 4 RIBBON CRIMPS
- F** 6 JUMP RINGS
- G** 2 EYE PINS
- H** 3 CURB CHAINS
- I** 7 BEADED CHARMS
- J** 3 METAL PAILLETES CHARMS
- K** 39 VARIOUS BEADS



Before YOU Begin

- 1 Read all the instructions before you start your project.
- 2 Find a piece of fabric, t-shirt or towel to work on before laying out all the components, to prevent the components from rolling around.

LET'S START WITH ELSA, ANNA AND OLAF BRACELETS

Check out the next pages to learn how to make each character's bracelets.

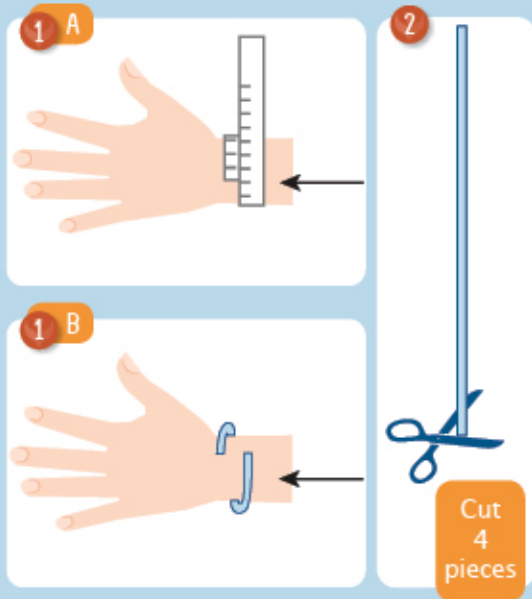


What YOU'LL NEED:

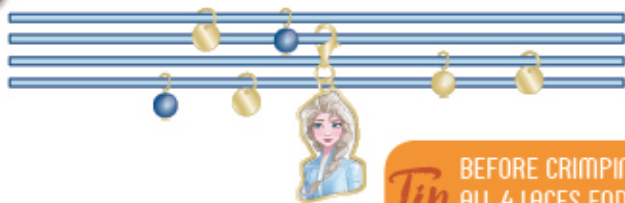
- | | |
|-------------------------------------|----------------------------------|
| A LIGHT BLUE FAUX-SUEDE LACE | E 2 BLUE BEADS CHARM |
| B 2 RIBBON CRIMPS | F 1 GOLD BEAD CHARM |
| C 2 JUMP RINGS | G 3 METAL PAILLETES CHARM |
| D LOBSTER CLASP | H ELSA CHARM |

1. Measure the size of your wrist with a piece of cord, measure it and write the measure down on a piece of paper.

2. Take the light blue faux-suede lace and cut 4 pieces the same length of your wrist.



3


Tip

BEFORE CRIMPING, YOU CAN TAPE ALL 4 LACES ENDS TOGETHER TO HELP THEM STAY IN PLACE.

4



5

A



5

B



3. Thread the charms by following the pattern shown in the picture.

4. Place the ribbon crimps at each end of the faux-suede lace. Close the crimps with all 4 laces together with pliers. Make sure all the strands are inside the ribbon crimps.

5. Add a jump ring on each ribbon crimp and there is one side of the bracelet that will have a lobster clasp.

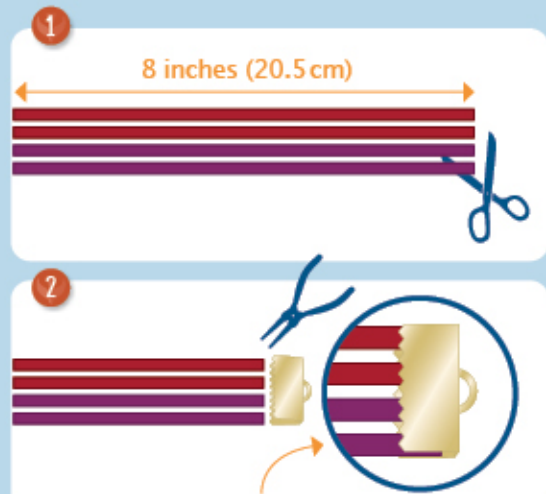


What YOU'LL NEED:

- | | |
|---------------------------------|-------------------------------|
| A RED FAUX-SUEDE LACE | F 1 GOLD BEAD CHARM |
| B PURPLE FAUX-SUEDE LACE | G 2 ORANGE BEAD CHARMS |
| C 2 RIBBON CRIMPS | H ANNA CHARM |
| D 2 JUMP RINGS | I 1 YELLOW BEAD CHARM |
| E LOBSTER CLASP | |

1. Measure and cut 2 pieces of purple faux-suede lace of 8 inches (20.5 cm), and 2 pieces of red faux-suede lace.

2. Put the 4 strands inside the ribbon crimp and close it with a help of a pliers.

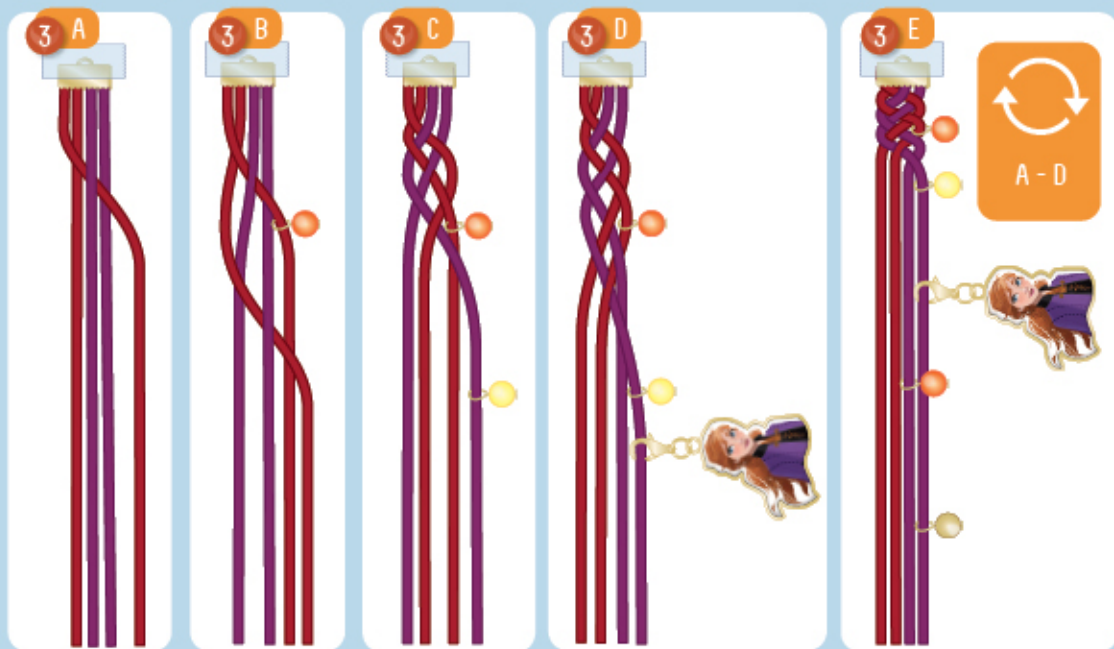


Tip BEFORE CRIMPING, YOU CAN TAPE ALL 4 LACES ENDS TOGETHER TO HELP THEM STAY IN PLACE.



Tip

USE A PIECE OF TAPE OVER THE RIBBON CRIMPS TO KEEP THE BRACELET IN PLACE.

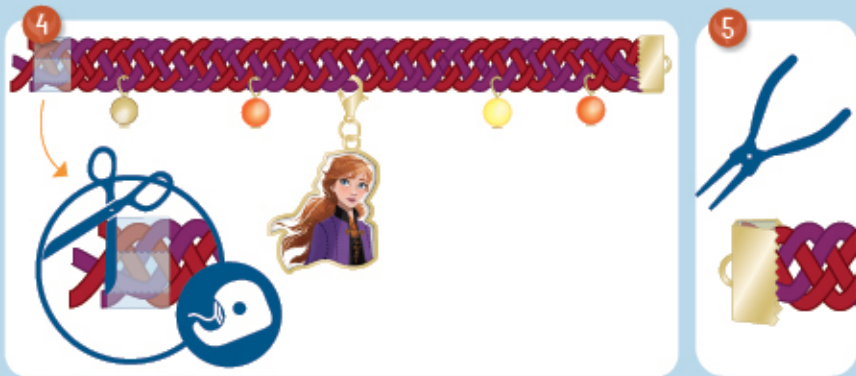


3. Braid with the 4 strands using the flat braid technique until the end of the laces.

4. Put a piece of tape to secure the end of the braid and cut some extra pieces to make all the strands to be the same level.

5. Put the end in the ribbon crimp and close it with pliers.

6. Add the ring jump on each side and one side with one lobster clasp.





What YOU'LL NEED:

- | | |
|-------------------------------|------------------------|
| A 3 GOLDEN BEADS | E 2 BLACK BEADS |
| B GREY FAUX-SUEDE LACE | F 1 ORANGE BEAD |
| C 2 CRIMP END CAPS | G EYE PIN |
| D OLAF CHARM | H 2 JUMP RINGS |

1. Take an eye pin, slide the three beads (black, orange, black).

2. With scissors, cut the pin, leaving a piece of ½ inch (1 cm) long. Bend the wire as close to the bead in 90°, you will feel the bead is not moving too much. Use a round nose plier to wrap the wire around the tip of the plier, creating a loop.

Tip

IF YOU WANT TO MAKE THE PERFECT LOOP, FIND A METAL WIRE WITH THE SAME THICKNESS AS THE EYE PIN AND PRACTICE UNTIL YOU NAIL IT. PRACTICE MAKES PERFECT!



Tip

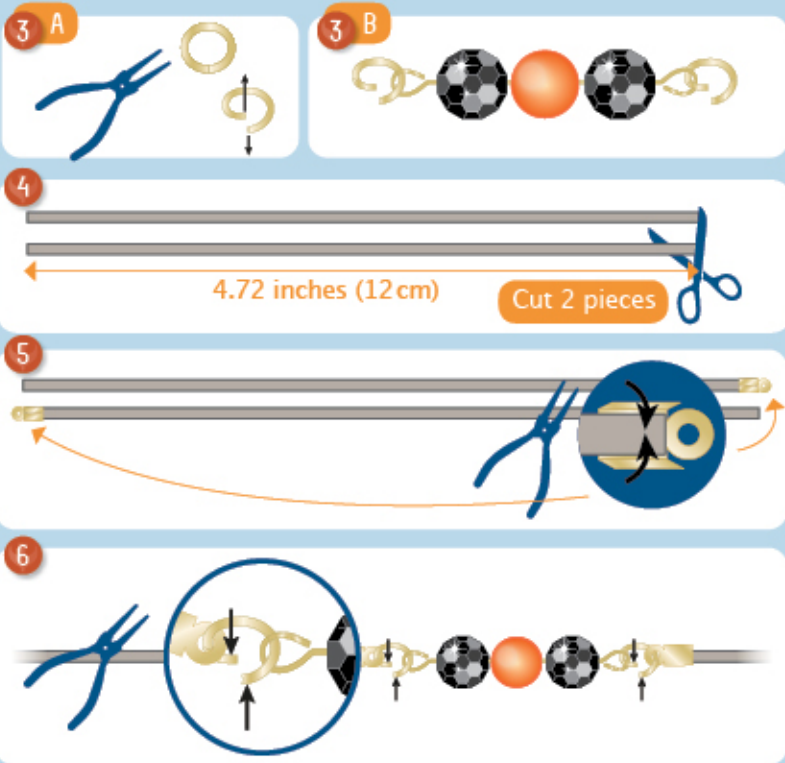
IF YOU DON'T HAVE ROUND NOSE PLIERS, USE THE TIP OF A LONG NOSE PLIERS.

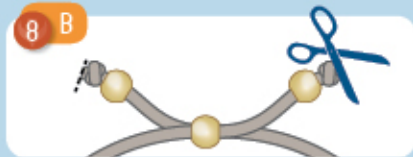
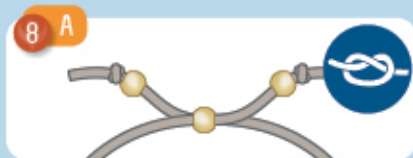
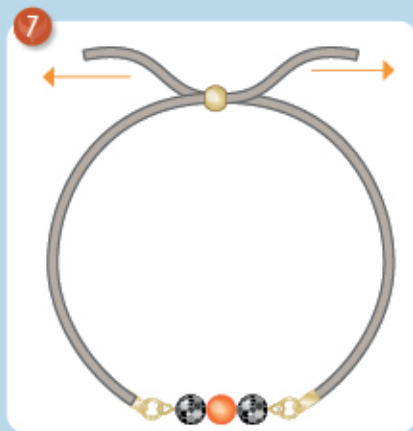
3. Add a jump ring on each end and leave it aside.

4. Measure and cut 2 pieces of gray faux-suede lace of 4.72 inches (12 cm).

5. Place the end of a lace in a crimp end cap and close with pliers. Repeat on the other piece of faux-suede lace.

6. Assemble the bead and the strands together.





7. Slide one small gold bead in one strand and insert the other strand in the opposite direction.

8. Add 2 more gold beads into each end of the strand and make a knot. Cut the extra pieces.

9. Attach Olaf's charms on one of the two jump rings.



In
THIS *section*

You will learn to make
5 bracelets!

Check out page 25 for easy
instructions on how to make
5 Exquisite Element Bracelets.

Before you go.... let's find out
where these elements come
from and what they mean.



Elsa has been hearing a voice calling to her, but only she can hear it! One night, she decides to follow the voice to see where it's coming from. Elsa steps outside and uses her magical power of snow and ice to discover the source of the mysterious voice. Crystals start forming in the sky, showing her the symbols for earth, fire, wind and water.

Let's have
A CLOSER LOOK
AT THESE
symbols

DURING THEIR
JOURNEY TO THE
ENCHANTED FOREST
ANNA, ELSA,
KRISTOFF, SVEN
AND OLAF WILL
ENCOUNTER

4 giant monoliths

THEY HAVE THE SAME
FOUR SYMBOLS AS THE
CRYSTALS. THESE FOUR
SYMBOLS REPRESENT
FOUR ELEMENTS: WIND,
WATER, EARTH
AND FIRE.





wind



water



earth



fire

THE ELEMENTS REPRESENT THE FOUR
ENCHANTED FOREST SPIRITS.

COME, LET'S LEARN
MORE ABOUT THESE *spirits.*

Wind Spirit

Fire Spirit

Bruni

THE PLAYFUL SALAMANDER.

This adorable puppy-like spirit ignites the forest, leaving a trail of fire with its every move. When it realizes Elsa's powers, it crawls into her palm to cool off.



Gale IS THE WIND SPIRIT.

Gale is the first of the spirits to appear. This force taunts Elsa and the group by spinning them in its vortex.

Water Spirit

Water Nokk IS A
WARRIOR AND GUARDS THE SECRETS
OF THE FOREST FIERCELY.

To get to Ahtohallan, Elsa must cross the Dark Sea. During her big journey, Elsa encounters the mythical horse-shaped Water Nokk, the Water Spirit. Elsa realizes that in order to get past the Dark Sea, she must prove she's worthy and earn its respect.



Earth Spirit



Earth GIANTS

When sleeping, these Earth Spirits look like a rocky mountain, but when woken, are quite grumpy. The group must tread lightly around these spirits to avoid the dangerous falling boulders and stomping of feet.

ELEMENT BRACELETS

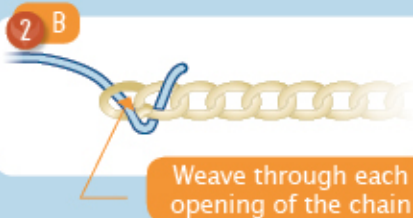


What YOU'LL NEED:

- | | |
|-------------------------------------|---------------------------------|
| A DARK BLUE FAUX-SUEDE LACE | E 2 GOLD SNOWFLAKE BEADS |
| B LIGHT BLUE FAUX-SUEDE LACE | F 2 GOLD CHAINS |
| C 8 GOLD BEADS | G WATER ELEMENT CHARM |
| D GREY FAUX-SUEDE LACE | H WIND ELEMENT CHARM |

1. Measure and cut 14.5 inches (37 cm) of the blue and light blue faux-suede lace. These two colors will make up the water bracelet.

2. Take one end of the blue faux-suede lace and weave it in and out through the openings of the chain until you reach the end.

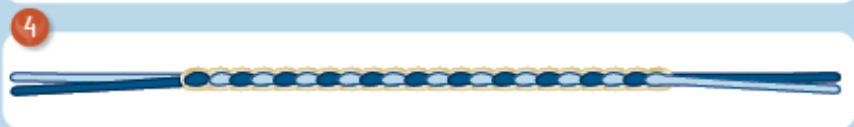


3. Take the other piece of faux-suede lace and repeat step 2, this time working in the opposite direction. To create the spiral pattern, cross the lace over as shown.

4. Keep the curb chain centered.

5. To tie off the bracelet, gather the four lace pieces at the ends and pull them through a snowflake bead.

6. Thread a gold bead onto each end of the lace pieces and finish with a knot. If the laces are too long, feel free to cut the tails until you're happy with the length.



Tip

TWIST THE SNOWFLAKE BEAD AS YOU THREAD IT TO MAKE IT SLIDE ON MORE EASILY.

7



8



REPEAT
STEPS
1 TO 6

7. Attach the water charm to the bracelet.

8. To create the Wind Element bracelet, repeat steps 1–6 using the beige faux-suede lace. Finish it with the wind charm.

Tip

TRIM THE TAILS BIT BY BIT TO AVOID CUTTING THEM TOO SHORT.

ELEMENT BRACELETS



What YOU'LL NEED:

- A 12 GOLD BEADS
- B RED FAUX-SUEDE LACE
- C 2 GOLD SNOWFLAKE BEADS
- D BEIGE FAUX-SUEDE LACE
- E 2 GOLD CHAINS
- F EARTH ELEMENT CHARM
- G FIRE ELEMENT CHARM

1

7 LINKS

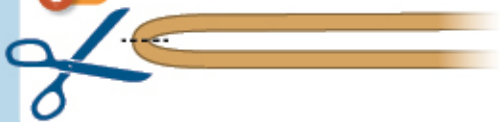


2 A

19.5 inches (50 cm)



2 B



1. Use pliers to open the gold chain links. Create 2 pieces of chain of 7 links and save them for later.

2. Measure and cut 19.5 inches (50 cm) of the beige faux-suede lace and cut it in half. This color is for the Earth bracelet.

3

Through the last link



4



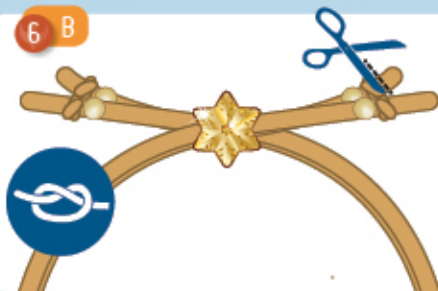
5



6 A



6 B



3. Loop the lace pieces through either end of the chain.

4. Thread gold beads at the ends of each lace piece. Do this on both sides.

5. To close the bracelet, thread a snowflake bead onto the ends of the two lace pieces. Thread the other lace pieces the same way, going the opposite direction.

6. Thread a gold bead onto the end of each lace piece and finish with a knot. Cut the excess.

7. Add the earth charm to the chain.

8. To Create the Fire Element bracelet, repeat steps 1–6 using the red faux-suede lace. Finish it with the fire charm.

7



EARTH
CHARM



8



FIRE
CHARM



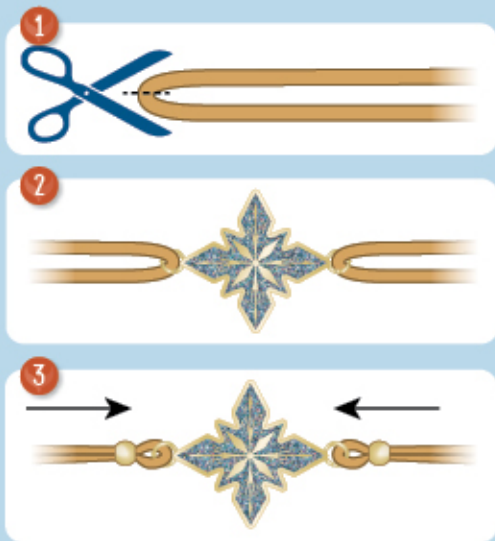
REPEAT
STEPS
1 TO 6



*What
YOU'LL NEED:*

- A** 6 GOLD BEADS
- B** 1 LARGE GOLD BEAD

- C** BEIGE FAUX-SUEDE LACE
- D** BRIDGE ELEMENT CHARM

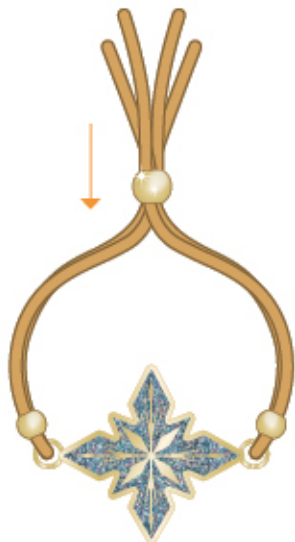


1. Take the remaining piece of the beige lace and cut it in half.
2. Thread the lace pieces through each end of the snowflake charm using the two side loops.
3. Gather the two strands and thread them through a gold bead. Do this on both sides.

4. Gather all four strands together and thread them through the large gold bead.

5. Thread each strand through a gold bead and finish with knots at the ends.

4



5



CHALLENGE YOURSELF WITH OTHER CRAFT ACTIVITIES!

CHECK OUT
[makeitrealplay.com](https://www.makeitrealplay.com)



WARNING!

CHOKING HAZARD – small parts. Not suitable for children under 4 years.
This toy contains fonctionnal sharp points.

Disney FROZEN II

WELCOME TO ELSA AND
ANNA'S MAGICAL WORLD!
READ ABOUT ALL OF THE BELOVED CHARACTERS
FROM DISNEY'S *FROZEN 2* AS THEY EMBARK
ON A BRAND-NEW ADVENTURE.
PLUS, LEARN HOW TO CREATE
BEAUTIFUL BRACELETS.



ISBN: 978-1-7327265-5-0



9 781732 726550

makeitrealplay.com

make it real!