

* WARNING

If using optional stop screws, position plate in clamp with stop screws facing forward and **beyond front edge of clamp**. Stop screws must completely clear front edge of clamp before attempting to close the quick-release clamp. **Maximum torque setting for stop screws is 10 in-lb.**

MAINTENANCE

GENERAL CARE

Wipe down chassis before plate installation to avoid trapping dirt and grit.

CLEANING

Routinely inspect plate installation screws prior to use to ensure plate is securely installed.

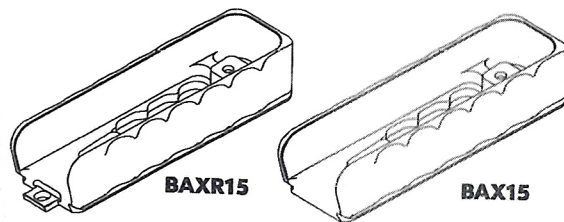
GUARANTEE

All Really Right Stuff Brand Products are guaranteed to the original purchaser to be free of defects in material or workmanship for 5 years from the date of purchase. Products will be repaired or replaced at our option.

CHASSIS PLATES

☐ BAXR15 for Accuracy Int'l SA AXAICS MKI/MKII

☒ BAX15 for Accuracy Int'l AIAIX & AXMC

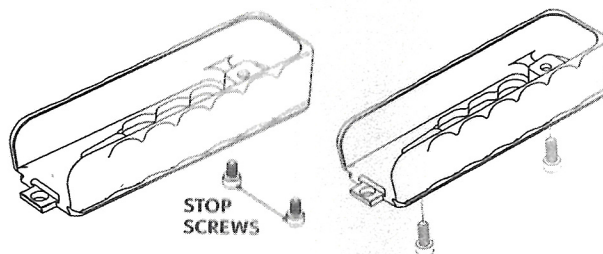


Really Right Stuff custom chassis plates are compatible with all Really Right Stuff clamps and any Arca-Swiss style quick-release clamp. Check our website for detailed specifications on all chassis plates.

INSTALLATION

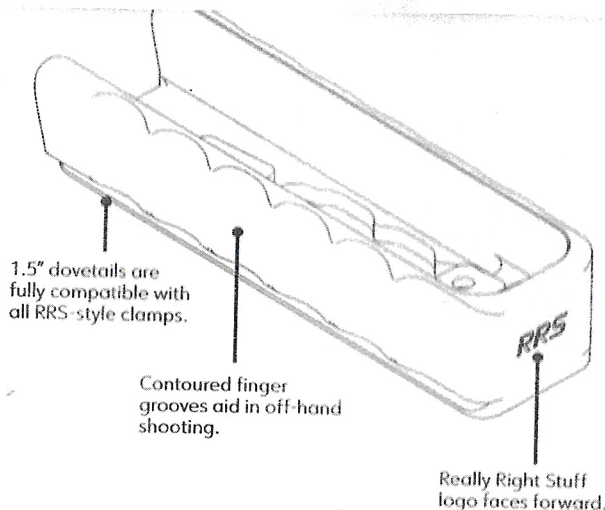
BAXR15

- STOP SCREWS**
Optionally, install both **stop screws*** using included 2.5mm hex key. Stop screws ensure plate won't slip during heavy recoil.



BAXR15 with LONG ACTION MODELS:
BAXR15 was designed for Short Action Models; plate will fit Long Action models but will have a slight gap over the forward action screw.

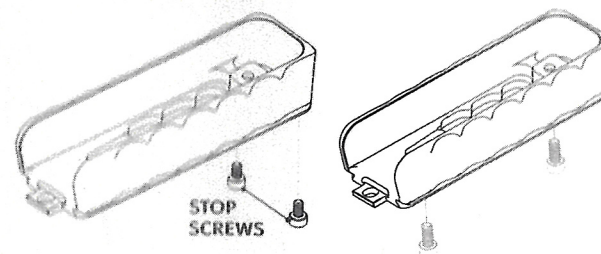
- INSTALL PLATE**
Use included M4 hex key to remove original grip screws; use same screws to install plate. Recommended torque setting is 35 in-lb.



INSTALLATION

BAX15

- STOP SCREWS**
Optionally, install both **stop screws*** using included 2.5mm hex key. Stop screws ensure plate won't slip during heavy recoil.

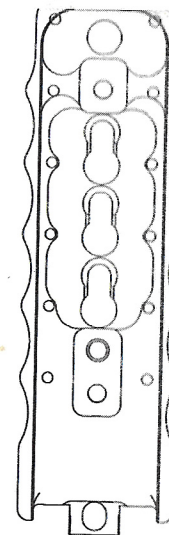


- INSTALL PLATE**
Use included M4 hex key to remove original grip screws; use same screws to install plate. Recommended torque setting is 35 in-lb.

Quick-Detach
Flush Mount

Key Slots offer
additional
mounting options.

Multiple stop
screw* positions
to accommodate
varying centers of
mass.



Two stop screws* at
front of plate ensure
non-slip mounting
during heavy recoil.

Mounting screws not
included; use original
grip screws.

Industry standard
accessory socket
threaded 1/4"-20.

Plate ID stamped on the
bottom (not visible).



720 S 850 E Lehi, UT 84043
1-385-248-0777 | 1-888-777-5557
www.RRStuff.com

© 1990-2019 Really Right Stuff, LLC.
All rights reserved.

