



AT-X Universal Hinge installation

Tools & Supplies required:

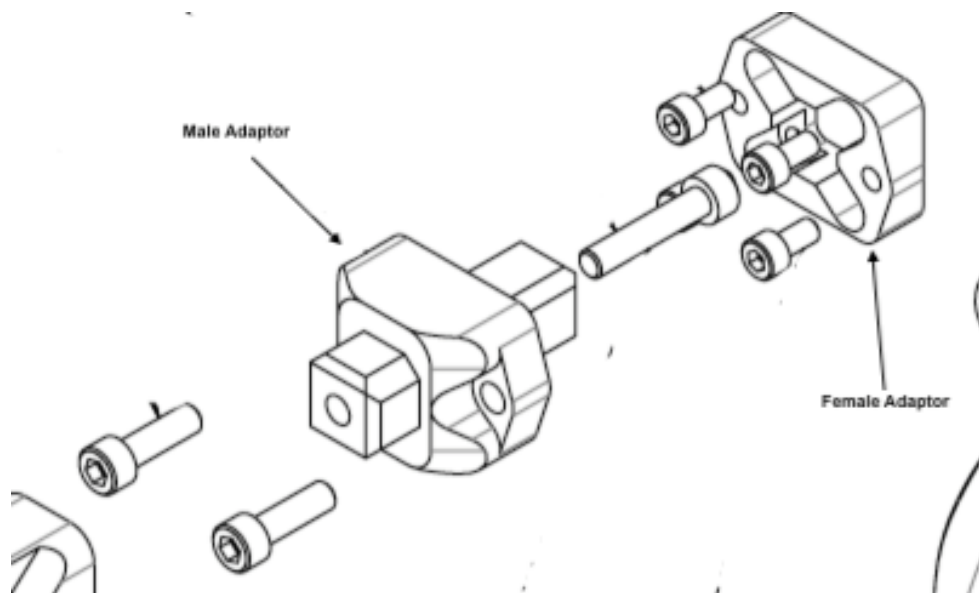
5mm Ball Head Hex key

4mm Hex key

2.5mm Hex key

Green Loctite (638)

Blue Loctite (242)



Step 1:

- Remove the bolt and magazine from the rifle, making sure the rifle is safe and free of all ammunition and is safe.

Step 2:

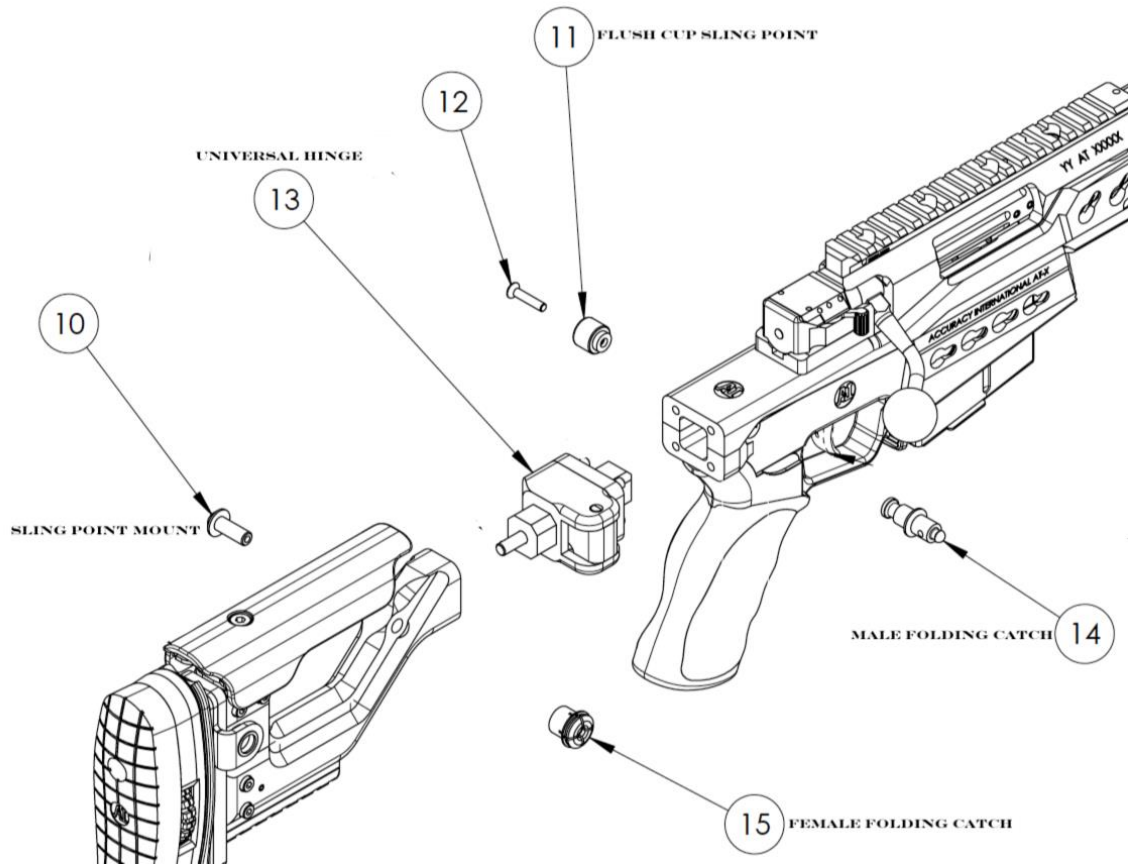
- Using a 5mm Hex key, remove the 2 bolts retaining the male adaptor to the female adaptor on the backside of the lower and in front of the butt stock. Set aside.
- Using the same 5mm Hex key and remove the screw retaining the male adaptor to the butt stock. Set aside

Step 3:

- Using a 4mm Hex key, remove the 4 off screw retaining the female fixed adaptor to the back of the upper/lower section of the rifle. Set aside

Step 4:

- Take the 4mm and the 2.5mm hex key, remove the flush cup and sling point mount from the lower of the rifle. Set aside (The sling Point mount and Flush cup will be reused)



Step 5:

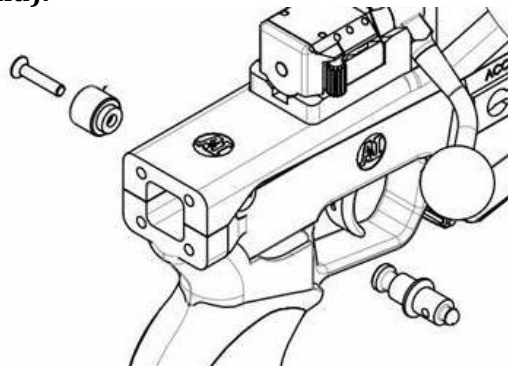
- Place the universal hinge in the location in which the male and female fixed adaptor was removed. Press button to open hinge all the way to a 90 degree.

Step 6:

- Using the supplied hardware 4ea 4mm screw and 1ea 5mm screw attach hinge to the rear and center section of rifle. Using a retaining compound (Green 638 Loctite) or similar and tighten to 35in/lb.

Step 7:

- Using the Flush cup/screw (removed in Step 4) and Male folding catch making sure the flush cup is on the left side (as before when removed) and the male catch is installed in the upper/lower location tighten securely (Blue 242 Loctite recommend).



Step 8:

- **Take the Sling point mount (removed in step 4) and the female catch, making sure the female catch is on the right side of the rear frame and tighten securely (Blue 242 Loctite recommend), DO NOT OVER TIGHTEN.**

