

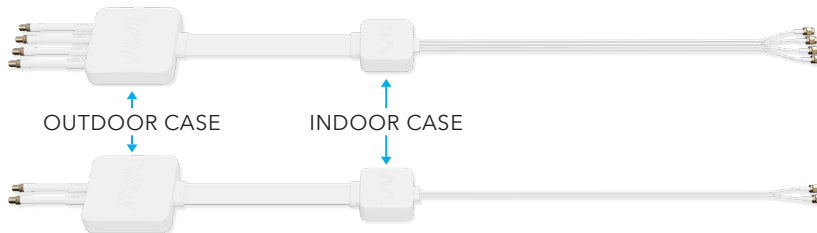
Coax Window Entry Cable

Designed by WAVEFORM in California

Have questions, need help, or feel like sharing feedback? Call **1-800-761-3041**, email help@waveform.com, or book a meeting at waveform.com/meet to chat with a Waveform Signal Specialist. We'd love to hear from you!

What's In The Box

A 1x Coax Window Entry Cable (Quad or Twin)

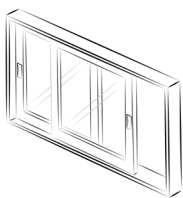


B 4x Screws & Wall Anchors

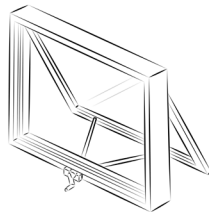


Compatible Window Types

Here are some of the window types that are compatible with the Coax Window Entry Cable.



Sliding*



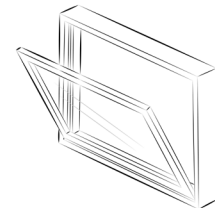
Awning



Hung

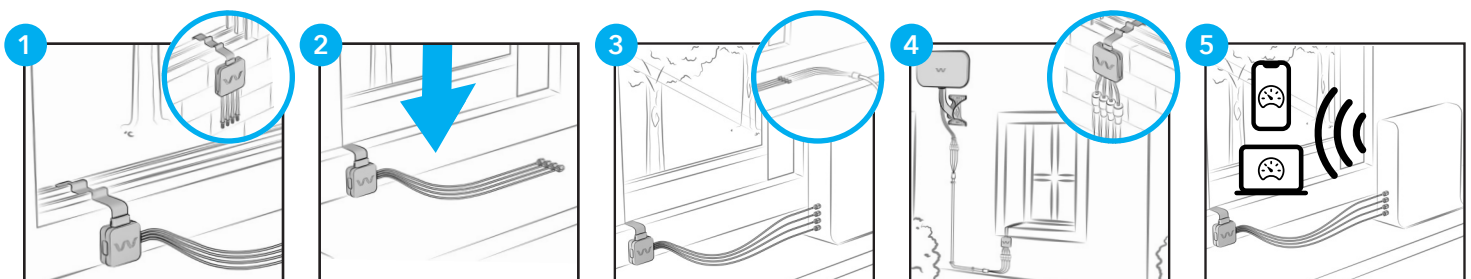


Casement



Hopper

Step 1. Connect Window Entry Cable



Loosely position entry cable in window frame, with **larger case outside**.

Check that your window **fully closes**.
If not, reach out to us!

Connect **indoor connectors** to your cellular router or extension cables.

Connect the **outdoor connectors** to your antenna or extension cables.

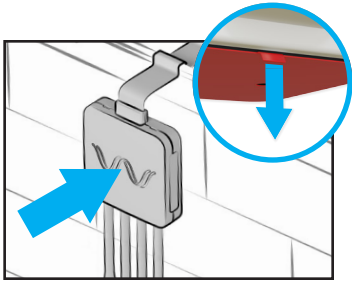
Restart your cellular router and perform 1-2 speed tests to test performance.

Important Tips

- If your window has a **window-screen**, it will need to be removed during the installation process.
- Make sure to use Waveform antennas and extension cables that **include weatherproofing boots** for the outdoor SMA connectors.
- * For sliding windows, **do not place the cable over the sliding rails**.

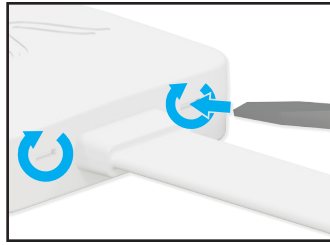
Step 2. Mount Window Entry Cable

A Adhesive Pads For Smooth Surfaces

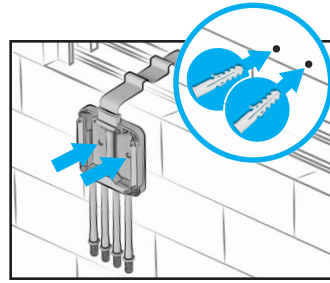


1. Clean and dry the surface.
2. Remove the adhesive film.
3. Firmly press the case onto the surface.

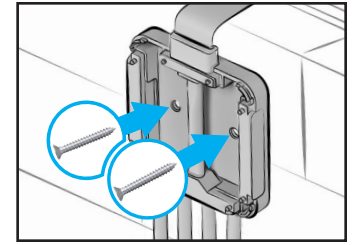
B Screws For Rough or Uneven Surfaces



1. Begin with the **outdoor case**. Twist a flat screwdriver inside each recess to **detach top cover**.



2. Position onto the **surface**. If necessary, drill pilot holes and/or insert wall anchors. **For added security**, use the adhesive pads.



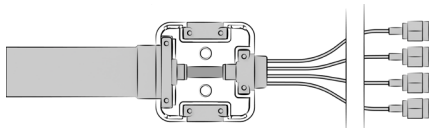
3. Use a Phillips screwdriver to **install the screws**. Reattach the top cover, close the window, and **repeat for indoor case**.

Step 3. Reposition Connectors (Optional)

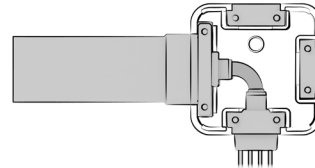
The indoor and/or outdoor cables of your Window Entry Cable can be moved to follow your cable path and help prevent sharp bends or strain on your cables.

The Window Entry Cable offers **three different cable positions for each connector case**:

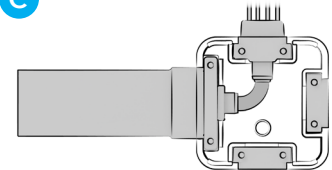
A



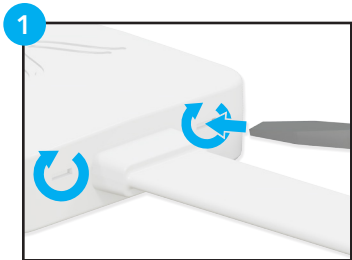
B



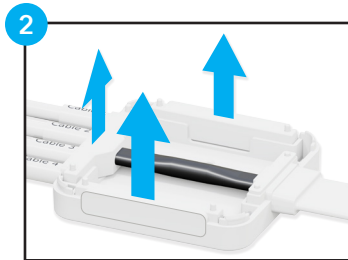
C



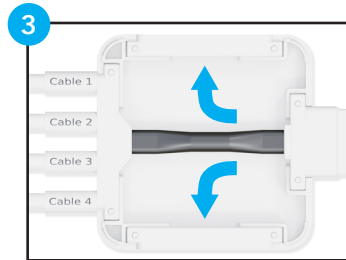
To reposition, follow these steps:



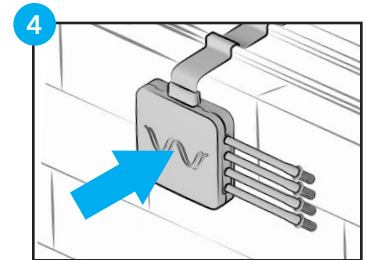
1. Twist a flat screwdriver inside each recess to **detach top cover**.



2. **Pull out** the connector plate and the cover plate you wish to swap.



3. **Replace** the connector plate and cover plate into their new positions.



4. **Reattach** the top cover of the case.



v1

We get super excited to see photos of our products in action.
Email pictures of your install to help@waveform.com and brighten our day!

Questions? Suggestions? Need help? Call 1-800-761-3041, or email help@waveform.com

Your Coax Window Entry Cable is designed, sold, and supported by Waveform and our team of Signal Specialists.

If you have any questions or feedback on how we could make this cable or manual better, **please reach out! We'd love to hear about your experience with this product!**