

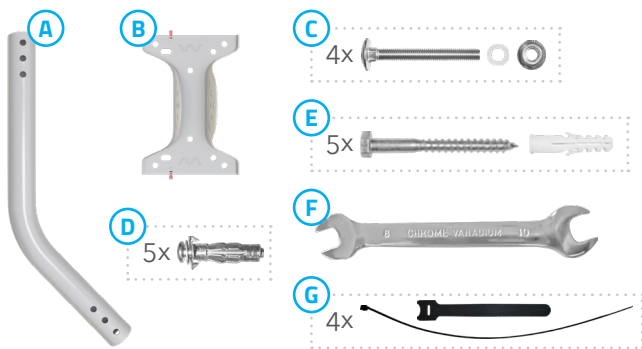
# Ultrapole: The Universal Antenna Mount

by WAVEFORM

Run into any issues or have any suggestions? Call 1-800-761-3041, or email [help@waveform.com](mailto:help@waveform.com) to **get connected with our dedicated Waveform Signal Specialists**. We'd love to hear from you.

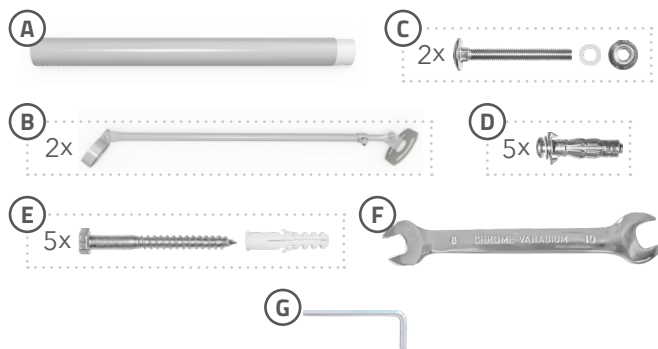
## Base Kit

- A** 1x J-Pole
  - B** 1x Footpad
  - C** 4x Bolts, Plastic Washers, and Flange Nuts\*
  - D** 5x Expansion Bolts\*
  - E** 5x Wood Screws and Anchors\*
  - F** 1x Size-8/10mm Wrench
  - G** 4x Zip and Velcro Ties
- \*Includes 1x spare



## Extension Kit

- A** 1x Extension Pole
  - B** 2x Brace Arms
  - C** 2x Bolts, Plastic Washers, and Flange Nuts\*
  - D** 5x Expansion Bolts\*
  - E** 5x Wood Screws and Anchors\*
  - F** 1x Size-8/10mm Wrench
  - G** 1x Size-4mm Allen Wrench
- \*Includes 1x spare



## Where to Install the Universal Antenna Mount

Here are some suggestions on **where to install** the Universal Antenna Mount:

- 1 Rooftop.** When installing on a roof, make sure to properly **seal any penetrations** made by screws. Consider using pitch pads, roofing sealant/caulking/cement, or other weather proofing materials.
- 2 Wall / Siding / Fascia.** Installing on the side of a building? Make sure the footpad(s) are secured against a sturdy material. Damaged, rotted, or weakened material may cause issues later on.
- 3 Pole / Railing.** If your roof or siding isn't suitable, the Universal Antenna Mount can be installed against a pole or railing. In such cases, hose-clamps or U-bolts are recommended.
- 4 And many more!** Don't let an instruction manual be the boss of you. You're Leonardo da Vinci, and installing this mount is your Mona Lisa. It includes mounting equipment to enable its installation at a variety of locations! It's called the *Universal Antenna Mount* for a reason.

## Screw & Bolt Guide

**To assemble the mount,** use the Bolts, Plastic Washers, and Flange Nuts.

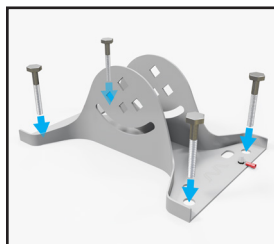
**To install the mount against a surface,** use the Wood Screws, Anchors, and Expansion Bolts.

- **For hard materials** (e.g. concrete, brick mortar):
  - Use the Wood Screws & Anchors.
  - The Anchors require a pre-drilled 10mm hole.
- **For semi-soft materials** (e.g. wood):
  - Use the Wood Screws.
- **For soft materials** (e.g. plaster, drywall):
  - Use the Expansion Bolts.
  - The Expansion Bolts require a pre-drilled 12mm hole and PH2 Phillips-head screwdriver (not included).

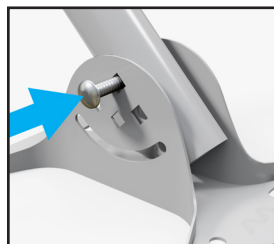
**Tip:** Prior to drilling, place the footpad against the intended mounting surface and mark the location of each hole with a pencil or marker.

## Assembling the Base Kit

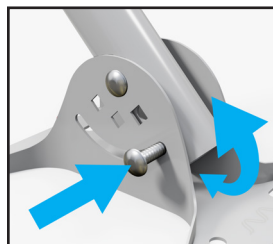
Use the provided **Size-8/10mm Wrench** to assemble the Base kit. Follow the steps listed below:



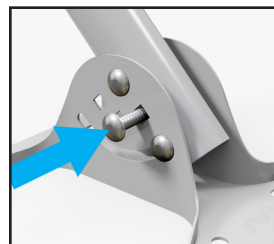
**1. Install Footpad** against a surface.



**2. Attach J-Pole** with pivot **Bolt**.



**3. Install adjustment Bolt** and adjust **J-Pole**



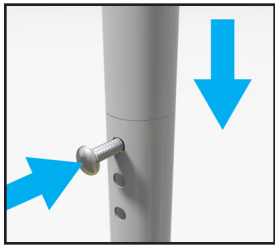
**4. (Optional) Install lock Bolt.**



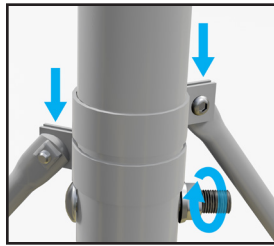
**5. Secure each Bolt** with a **Washer** and **Nut**.

## Assembling the Extension Kit

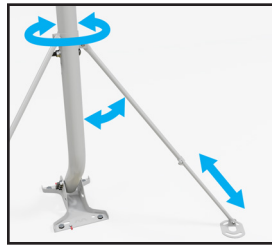
Use the provided **Size-8/10mm Wrench** and **Size-4mm Allen Wrench** to assemble the Extension Kit. Follow the steps listed below:



1. Insert **Extension Pole** into **J-Pole**. Install lock **Bolt**.



2. Secure **Bolt** with a **Washer** and **Nut**. Attach **Brace Arms**.



3. Adjust **Brace Arms** into position.



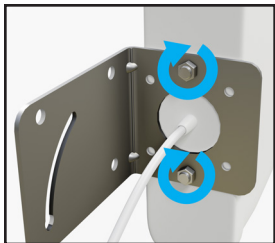
4. Install **Footpads** against a surface.



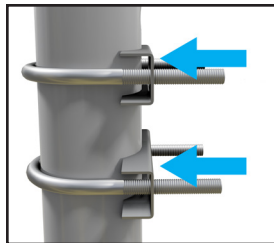
5. Tighten each **Brace Arm Bolt** into place.

## Attaching an Antenna to the Universal Antenna Mount

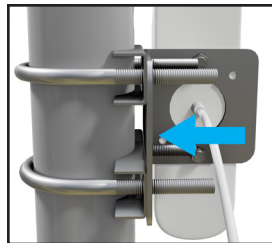
These details **depend on the antenna you've purchased**. The steps below describe how to attach the L-Bracket and U-Bolt assembly included with many of our Waveform antennas.



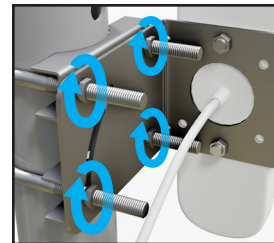
1. Attach **L-Bracket** to the **Antenna**.



2. Position **Clamps** and **U-Bolts** onto the **Pole**.



3. Install **L-Bracket** onto **Clamps** and **U-Bolts**.



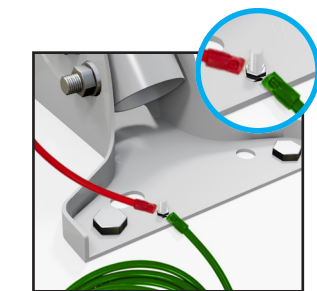
4. Secure assembly with **Washers** and **Nuts**.

## Grounding the Universal Antenna Mount

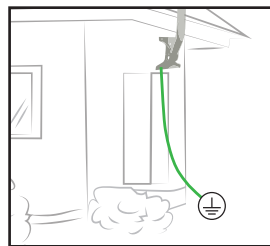
**Grounding an antenna mast is highly recommended.** It's required by the National Electric Code (NEC) and the mast's metal frame makes it a **prime target for lightning strikes**. Follow the steps listed below:



1. Attach a **Ground Wire** to an **In-line Surge Protector** (as shown) or to the **Antenna's Grounding Port**.



2. Attach the **Ground Wire(s)** to the **Footpad's Grounding Bolt**. Secure the assembly with a **Nut**.



3. Attach the **Ground Wire** to an suitable **Electrical Ground**.

### Grounding Tips

- The NEC recommends a **10 AWG or lower gauge** (thicker) for grounding cables.
- **In-Line Surge Protectors** can protect your equipment & prevents lightning from entering your home through the cable.
- If you're unsure about your grounding setup, **reach out to an electrical contractor**.
- **Learn which Electrical Grounds are suitable and more at [waveform.com/grounding](http://waveform.com/grounding)**



**Questions? Suggestions? Need help? Call 1-800-761-3041, or email [help@waveform.com](mailto:help@waveform.com)**

The Universal Antenna Mount is designed, sold, and supported by Waveform and our team of Signal Specialists. If you have any feedback on how we could make this mount or manual better, **we'd love to hear from you**.

We love hearing our customer's experience with our products, so please reach out!