

POWERED BY



## MT-221

Adjustable Wall Mount for hollow walls, 6 in stand-off

### Dimensions

Height	203.2 mm   8.0 in
Length	152.4 mm   6.0 in
Pipe Outer Diameter	2 3/8 in   2 7/8 in   3 1/2 in   4 1/2 in
Width	203.2 mm   8.0 in
Weight	31.1 kg   68.6 lb

### Environmental Specifications

Wind Rating	For specifications—contact 1-800-255-1479 (North America), 1-779-435-6500 (International), or a CommScope representative
-------------	--

### General Specifications

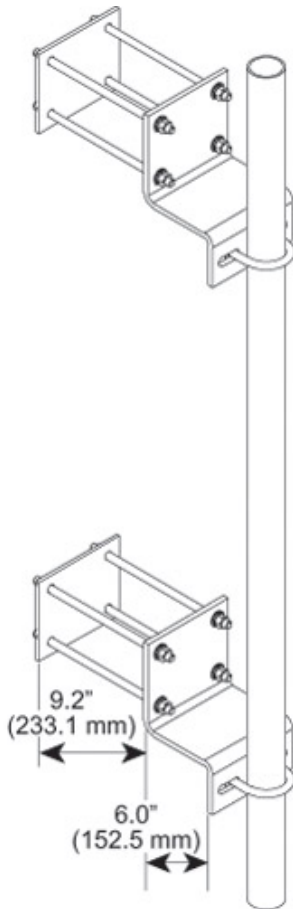
Product Type	Wall mount
Mounting	Hollow walls
Stand-off Distance	152.4 mm   6.0 in
Includes	Backing plates or anchors   Wall brackets, two
Material Type	Hot dip galvanized steel
Package Quantity	2

MT-221

POWERED BY



## Outline Drawing



## Regulatory Compliance/Certifications

Agency	Classification
ISO 9001:2008	Designed, manufactured and/or distributed under this quality management system

### \* Footnotes

Wind Rating	BWS—Base Wind Speed; FBC—Florida Building Code
-------------	--