

Why We Made This

ZShield Flex is designed to be a comfortable, wearable barrier that helps prevent the direct transfer of respiratory droplets from the user's mouth or nose onto persons, food or other objects. Our face shields are designed for clear verbal and nonverbal communication and comfort when masks or stationary sneeze guards are not practical. They are made in the USA, recyclable and easy to clean with soap and water. ZShield Flex users should still practice social distancing, just as they would with a face mask.

Product Features:

- Optimal fit—can be comfortably worn for many hours
- Customer-friendly—allows visibility of facial expressions for verbal and non-verbal communication
- Interrupts bi-directional airflow for safer interactions
- Business-friendly—safer environment for employees and customers, while maintaining a positive experience
- Can easily adjust up for active engagement and down for idle circumstance
- Breakaway safety feature—allows for quick attaching and detaching from neck
- Ultra lightweight
- Minimal noticeability—forms to the user's neck and chest



Be the Shield

For more information:
covidsupport@zverse.com

Order online at:
zshield.com

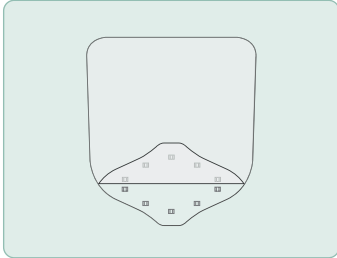


@zshieldofficial

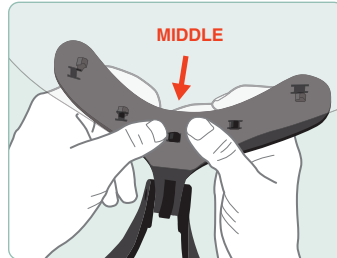
Please share your ZShields
in action using #BeTheShield

SKU# 300-022
GTIN: 850019658019

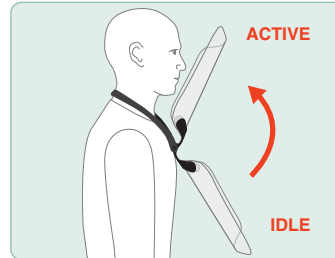
Assembly Instructions



01 Remove items from the box and place on a clean surface. Peel off protective cover/film on **both sides** of the visor starting from the bottom.



02 Ensure neck mount is positioned upright in the idle setting. Align H-cuts in visor with prongs (middle). Attach the visor by snapping each prong to cut, working from the center to the outer prongs.



03 Place around neck and adjust the device to the correct setting by shifting the shield up or down. The visor should cover the user's eyes, nose, and mouth for optimal protection.

Assembled Shield:



Active State



Visor Dimensions:
11.7" x 11.81" x .025"



Shield Bracket Dimensions:
5.527" x 3.823 x 1.773"



Neck Mount Dimensions:
8.64" x 5.70" x 1.78"



Idle State

Materials Used:

Frame: Polypropylene (Black)
Hypoallergenic

Visor: PETG (Optically Clear)

Note: Do not leave in extreme heat

Customization:

Ask about customizing with your organizations primary color and logo!

Cleaning Instructions:

Wash all components with soap and water

Frame—Dishwasher safe

Note: All components are shipped unsterilized

Please Recycle



PP

FRAME

Be the Shield

For more information:
covidsupport@zverse.com

Order online at:
zshield.com



@zshieldofficial

Please share your ZShields in action using #BeTheShield