

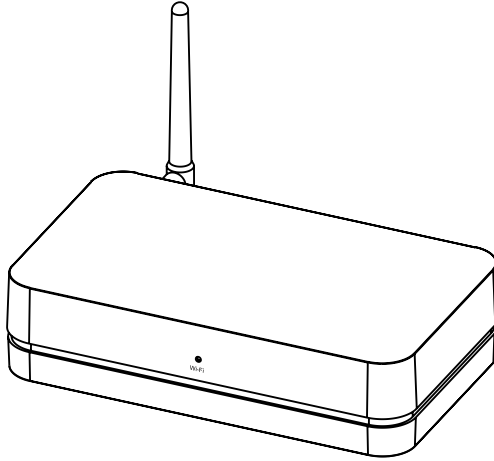


# **Stereo Hub Manual**

# TABLE OF CONTENT

<b>1. Introduction</b>	<b>03</b>
<b>2. Stereo Hub Overview</b>	<b>04</b>
2.1 Included in the box	04
2.2 Stereo Hub Layout	05
2.3 Remote Layout	06
2.3 Wi-Fi LED indications	07
<b>3. How to set up</b>	<b>08</b>
3.1 Setting up the Stereo Hub	08
3.2 Pairing the remote	08
3.3 Connecting the Hub to home network	09
3.4 Pairing speakers using WiSA	10
<b>4. How to use</b>	<b>11</b>
4.1 Using the remote	11
4.2 Channel setup using remote	12
4.3 Audio Playback	14
4.4 Automatic Standby	18
<b>5. Trouble shooting</b>	<b>19</b>
5.1 Drop-outs in only one speaker	19
5.2 Power cycling	20
5.3 Factory reset	20
<b>6. Safety &amp; Warnings</b>	<b>21</b>
6.1 Important Safety Instructions	21
6.2 Warning	22
6.3 Legal information	22

# 1. Introduction



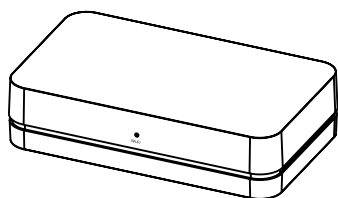
Thank you for buying the Stereo Hub. We hope you will enjoy it!

## Features:

- **Audio streaming**  
Stream wireless audio from a wide variety of services.
- **DSP functions for manual and Room EQ**  
Adjust your speakers using multiple audio filters or use our automatic Room EQ so your speakers sound *just* right.
- **Hi-resolution playback**  
Play digital content with a high sample rate of up to 192kHz from streaming, optical COAX or USB inputs.
- **APP based interface with system trimming options.**  
Personalize your settings to get the best listening experience out of your space and speakers.

## 2. Stereo Hub Overview

### 2.1 Included in the box



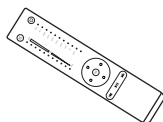
1x Stereo Hub



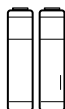
1x Antenna



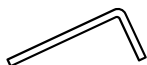
1x Power adapter (with EU/US/UK plug)



1x Remote

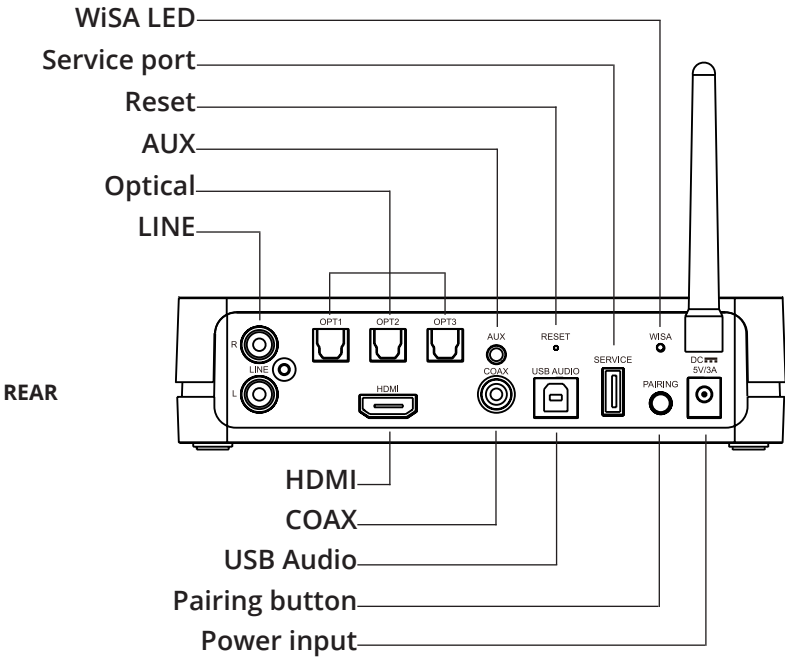
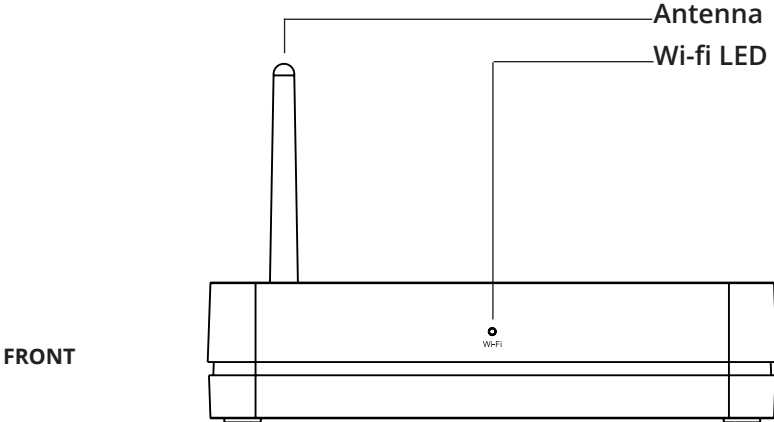


2x AAA Batteries

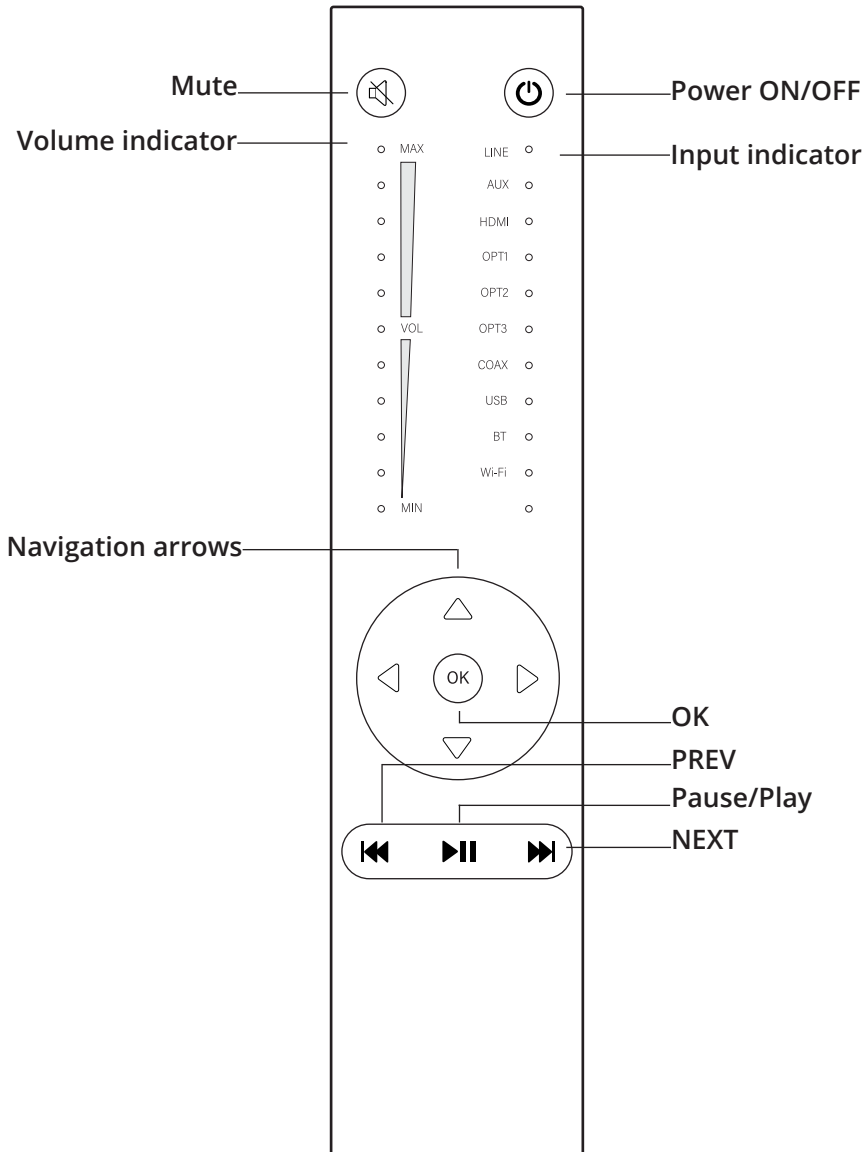


1x Allen key

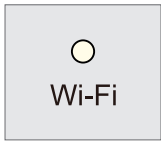
# 2.2 Stereo Hub Layout



## 2.3 Remote Layout



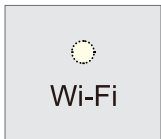
## 2.3 Wi-Fi LED indications



**Solid white:** Connected to network



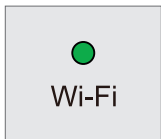
**White (slow blinking):** Booting



**White (rapid blinking):** Wi-Fi configuration mode



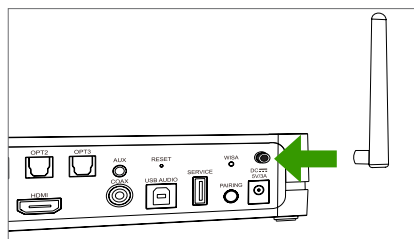
**White (Irregular blinking):** Updating software



**Solid green:** Spotify streaming

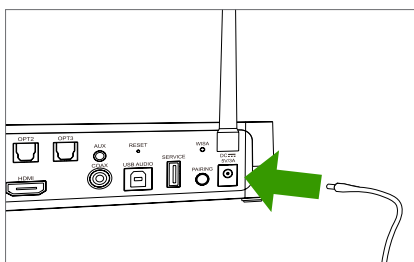
## 3. How to set up

### 3.1 Setting up the Stereo Hub



#### 1. Connect antenna to the back

- Screw the included Wi-Fi antenna on to the back plate of the Stereo Hub.

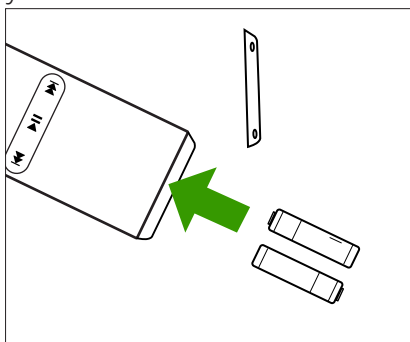


#### 2. Connect power supply

- Plug the included *power adapter* into the Stereo Hub.

### 3.2 Pairing the remote

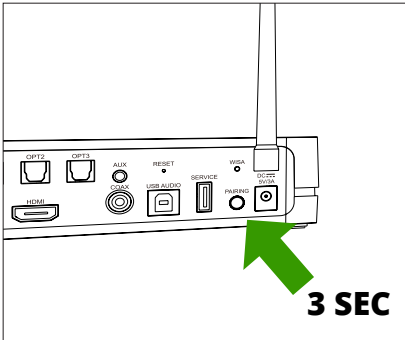
Pair the remote before proceeding to the next step. Make sure your Hub is on before starting.



#### 1. Insert batteries

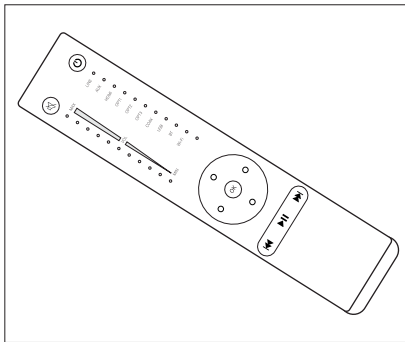
- Unscrew the bottom plate of the remote using the included *Allen key*.
- Insert batteries into your *remote*.
- Make sure batteries has the correct direction, as indicated on the inside of the *remote*.





## 2. Press and hold pair

- Press and hold the 'Pair' button on the *Stereo Hub* for 3 seconds until the WiSA LED on the REAR of the *Stereo Hub* starts blinking rapidly.



## 3. Press any button on remote

- Press any button on the *remote*, if pairing is successful, the 'WiSA LED' on the rear of the hub will stop blinking.
- When pressing any button on the remote, the 'WiSA LED' should blink once.

## 3.3 Connecting the Hub to home network

### 1. Download the "Google Home" App

Scan the QR code below to get direct access to the app from the Apple Store or the Google Play store.



IOS



Android

## 2. Power on the Stereo Hub

The *Stereo Hub* is ready for the next step when the 'Wi-Fi LED' starts flashing rapidly, meaning it has entered 'Wi-Fi Configuration' mode.

## 3. Open the Google Home app and follow the instructions

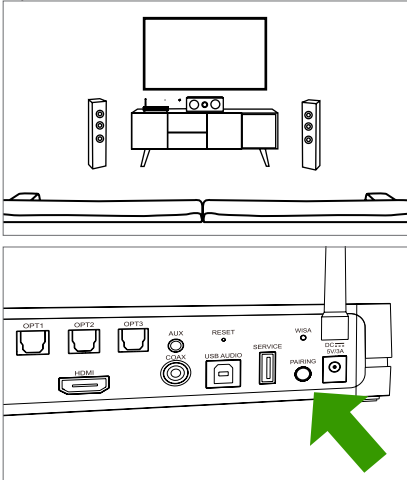
You will be guided through each step in the app.

## 4. Wait for LED to turn solid white

After finishing the setup in the Google Home app, the 'Wi-Fi LED' should turn solid white, signifying that the *Hub* is connected to the Wi-Fi and ready to stream.

### 3.4 Pairing speakers using WiSA

The *Stereo Hub* can easily be paired with any WiSA certified speakers.



#### 1. Prepare speakers

- Make sure all speakers are correctly positioned, powered ON and their pairing or associate mode is activated.

#### 2. Press pair

- To pair the speakers with the *Stereo Hub*, press the pairing button on REAR once and await slow blinking in WISA LED while connecting.

## 4. How to use

### 4.1 Using the remote



#### Power Surround Hub ON/OFF

The *Stereo Hub* can be turned ON or OFF using the 'ON/OFF' button.



#### Changing volume

Volume can be adjusted on the *remote* using the up and down 'Navigation' buttons.



#### Mute

The audio can be muted using the 'Mute' button. Press once to mute, and press again to unmute.



#### SKIP/Play/Pause

The audio stream can be started, paused, and tracks skipped, using the bottom three buttons. This is only available for Bluetooth and Wi-Fi inputs.

- OPT1 ○
- OPT2 ○
- OPT3 ○
- COAX ○
- USB ○

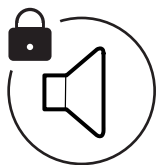
#### Input selection

Input can be changed using the *remote* by pressing the left/right navigation buttons. You can see the current input on screen or on the 'Input Indicator' LED.



#### Hide Bluetooth visibility

- Hold PREV button for 3 seconds. When input LED blinks, Bluetooth is hidden and no new units can be paired.
- Hold NEXT button for 3 seconds. When input LED blinks, Bluetooth is visible for pairing new units.



## Lock volume for specific input

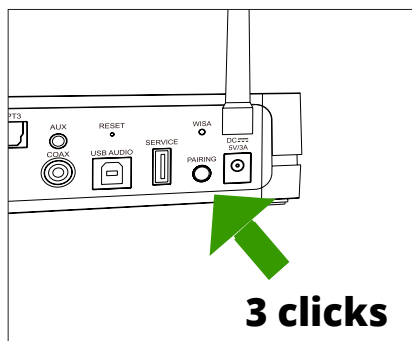
A volume can be locked for specific inputs.

- Select the input and volume you want to lock.
- Press and hold mute for 5 seconds until the input indicator blinks once.

**NB: To unlock, choose the input you want to unlock and press and hold mute again for 5 seconds**

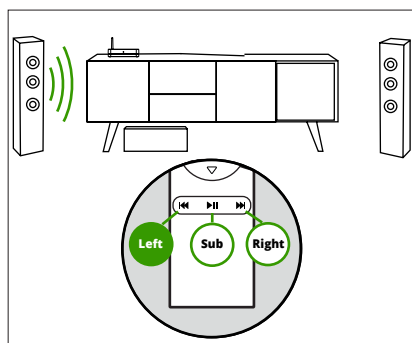
## 4.2 Channel setup using remote

Before starting, make sure your remote is paired, and speakers are on and paired.



### 1. Start Channel Setup mode

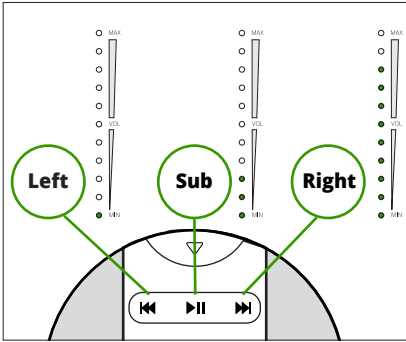
Press 'Pair' button on the REAR of the *Stereo Hub* quickly three times.



### 2. Assign channel to speaker

When Channel Setup mode is entered, one of the speakers in the setup will start producing noise. Use the *remote* buttons to assign the corresponding channel:

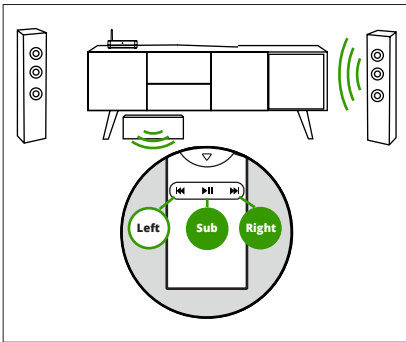
- **PREV** - Left channel
- **PAUSE** - Subwoofer channel
- **NEXT** - Right channel



### 3. Check speaker assignment

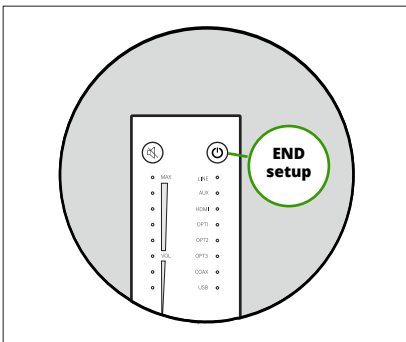
After assigning a speaker, the volume LED's on the *remote* will indicate what channel is assigned to the speaker as follows:

- **1 LED** - Left channel
- **3 LEDs** - Subwoofer channel
- **9 LEDs** - Right channel



### 4. Assign other speakers

Once a channel has been correctly assigned, jump to next speaker with the input select button. The input LED will indicate which speaker is chosen. Volume LED's will indicate which channel is currently set.



### 5. End Channel Setup mode

When all speakers are correctly assigned, you can exit Channel Setup mode by pressing the 'Power' button on the *remote*.

## 4.3 Audio Playback

### HDMI HDMI

- Connect the *Stereo Hub* HDMI input to your TV's HDMI(ARC/eARC) input, using a HDMI 1.4 or newer HDMI cable. Change the audio output of your TV to HDMI(ARC/eARC)
- If *Stereo Hub* is not identified as your TV's output audio device, change the TV's input to the HDMI(ARC/eARC) input to make the handshake and then back to your desired source.
- if your TV supports eARC, it is important to disable eARC in the TV's menu.



### LINE

- Any analogue source with LINE out can be connected to the *Stereo Hub* through the LINE port on the REAR of the *Hub*.
- Switch audio input to "LINE" using the *remote* to playback audio.

**NB: LINE can only support up to 2,5V rms**



### Optical

- Any source with optical SPDIF output can be connected to your *Stereo Hub* through the two optical ports on the REAR of the *Hub*.
- Switch audio input to the chosen Optical port. using the remote.



## Audio USB

- A computer can be connected to the *Stereo Hub* using a USB-A to USB-B cable.
- Switch audio input to USB using the remote.
- USB input is default with fixed full gain. This is to allow users to control volume from their computer. Should you want to unlock the fixed volume - press-and-hold the mute button for 5 seconds to release it.



## AUX

- Any source with AUX output can be connected to your *Stereo Hub* through the AUX port on the REAR of the *Hub*.
- Switch audio input to AUX using the remote.



## COAX

- Any source with COAX output can be connected to your *Stereo Hub* through the COAX port on the REAR of the *Hub*.
- Switch audio input COAX using the remote.



## Bluetooth

- The *Stereo Hub* is by default visible and ready for Bluetooth pairing. Find and select the *Stereo Hub* in the Bluetooth Settings on the device you want to connect, the name should be something like "Stereo Hub\_XXXXXX".
- When the connection is established, the input will change automatically to "BT", making it ready to start playback.
- If a new device needs to be connected, disconnect the current device before starting the new connection process.



## Spotify Connect

- Open the Spotify Connect app and make sure your device and the *Stereo Hub* is on the same network.
- Find your *Stereo Hub* in the app and select it as playback device.
- The input will automatically switch to “Wi-Fi”. This can be seen on the ‘Input indicator’ on the *remote*.
- If a new input is selected, playback will be paused. Resuming playback will change the input back to “Wi-Fi”.



## Apple AirPlay

- Make sure the device you want to play from and the *Stereo Hub* is on the same network.
- Find the “AirPlay” icon on the device you want to play from. Tap it and select your *Stereo Hub* from the list.
- The input will automatically switch to “Wi-Fi”. This can be seen on the ‘Input indicator’ on the *remote*.
- If a new input is selected, AirPlay will disconnect and will need to be reconnected as described above.



## Google Chromecast

- Make sure the device you want to play from and the *Stereo Hub* is on the same network.
- Find the “Chromecast” icon on the device you want to play from. Tap it and select your *Stereo Hub* from the list.
- The input will automatically switch to “Wi-Fi”. This can be seen on the ‘Input indicator’ on the *remote*.



- If a new input is selected, Chromecast will be paused. Resuming the casting will change the input back to “Wi-Fi”.

## DLNA

- Open your designated DLNA app and make sure your device and the *Stereo Hub* is on the same network.
- Find the your *Stereo Hub* in the app and select it as playback device.
- The input will automatically switch to “Wi-Fi”. This can be seen on the ‘Input indicator’ on the *remote*.
- If a new input is selected, playback will be paused. Resuming playback will change the input back to “Wi-Fi”.



## Roon

- Open the Roon app and make sure your device and the *Stereo Hub* is on the same network.
- Find the your *Stereo Hub* in the app and select it as playback device.
- The input will automatically switch to “Wi-Fi”. This can be seen on the ‘Input indicator’ on the *remote*.
- If a new input is selected, playback will be paused. Resuming playback will change the input back to “Wi-Fi”.

## 4.4 Automatic Standby

The *Stereo Hub* will enter Automatic Standby mode after 20 minutes without audio signal. The *Stereo Hub* will become active again automatically when it receives a signal.

**NB: When Stereo Hub goes to standby from the Optical, LINE, COAX, AUX og USB inputs, it is only able to wake up again from the input it was using before it went into standby**

## 5. Trouble shooting

If you are experiencing problems that are not described in this guide, please visit our FAQ at: <https://platinaudio.com/>

### 5.1 Drop-outs in only one speaker

If only one speaker loses input (as opposed to all speakers in your setup losing their input at the same time), it indicates that there may be signals interfering with the WiSA connection. Please follow these guidelines carefully, to trouble shoot this:

#### 1. Check if the location of your Surround Hub is optimal

- Make sure there are at least 3 meters between the router (Or other wireless equipment) and the *StereoHub*.
- Avoid having walls between the *Stereo Hub* and the speakers.
- Avoid having the router placed in between the *Stereo Hub* and the speakers.

#### 2. Check Wi-Fi settings

- Try to avoid MESH networks.
- Instead try to connect to a 2.4GHz Wi-Fi network.
- Try to avoid having a too high bandwidth, aim for 20MHz or 40MHz if possible.

## 5.2 Power cycling

Some times after a software update, it can be a good idea to power cycle the unit:

1. Turn of the unit.
2. Wait for 30 seconds before returning power to the unit.

## 5.3 Factory reset

If you for some reason need to factory reset the *Stereo Hub*, press the pinhole button on the REAR of the *Stereo Hub*.

# 6. Safety & Warnings

## 6.1 Important Safety Instructions

1. Read these instructions.
2. Keep these instructions.
3. Heed all warnings.
4. Follow all instructions.
5. Do not use this apparatus near water.
6. Clean only with dry cloth.
7. Do not block any ventilation openings. Install in accordance with manufacturer's instructions.
8. Do not install near any heat sources such as radiators, heat registers, stoves or other apparatus (Including amplifiers) that produces heat.
9. Do not defeat the purpose of the safety purpose of the polarized or grounding-type plug. A polarized plug has two blades with one wider than the other. A grounding type plug has two blades and a grounding plug. The wide blade or the third plug is provided for your safety. If the provided plug does not fit into our outlet, consult an electrician for replacement of the obsolete outlet.
10. Protect the power cord from being walked on or pinched, particularly plugs, convenience receptacles, and the point where they exit from the apparatus.
11. Only use attachments/accessories specified by the manufacturer.
12. Use only with the cart, stand, tripod, bracked, or table specified by the manufacturer, or sold with the apparatus. When a cart is used, use caution when moving the cart/apparatus combination to avoid injury from tip-over.

13.



14. Unplug this apparatus during lightning storms or when unused for a long period of time.
15. Refer all servicing to qualified service personnel. Servicing is required when the apparatus has been damaged in any way, such as power supply cord or plug is damaged, liquid has been spilled or object have fallen into the apparatus, the apparatus has been exposed to rain or moisture, does not operate normally, or has been dropped.

## 6.2 Warning

To reduce the risk of fire or electric shock, do not expose this apparatus to rain or moisture

The apparatus shall not be exposed to dripping or splashing and that no objects filled with liquids, such as vases, shall be placed on the apparatus.



This symbol is intended to alert the user to the presence of important operating and maintenance instructions in the literature accompanying this product.

## 6.3 Legal information

Chromecast built-in is a trademark of Google LLC.

The Spotify software is subject to third party licenses found here: <http://developer.spotify.com/esdk-third-party-licenses/>

The Bluetooth word mark and logos are registered trademarks owned by Bluetooth SIG, Inc. and any use of such marks by Platin is under license. Other trademarks and trade names are those of their respective owners.

Manufactured by:  
Platin Gate ApS  
Anelystparken 31C  
8381 Tilst, Denmark

For documentation and other information see:  
<https://platinaudio.com/pages/platin-product-documentation>