

05 / LED Status

LED Indicator	Steady Blue	Working
	Blinking Blue	The filter has been used for 30 days. Time to change!
	Blinking Red	Low water
	Red/Blue flashing alternatively once	Self-test on power-up
Wi-Fi Indicator	Fast Blinking (3 times/second)	Ready for set-up in SmartLink mode
	Slow Blinking (1 time /2 seconds)	Ready for set-up in AP mode
	Steady on	Device has properly been setup
Button	Short press when blinking blue	Reset filter
	Long press for 5 seconds	Factory reset (Wi-Fi LED blinking fast) Switch between SmartLink and AP modes
Specification	Model: WF004 Input: DC 5V 1A Capacity: 1.9 L Cable Length: 1.2 m (3.9 ft) Warranty: 1 year	Size: 180×175×147 mm (7.09×6.89×5.79 Inches) Weight: 750 g (26.46 oz) Communication: Wi-Fi (2.4 GHz)

06 / Precautions

1. Please use it in the indoor environment.
2. When cleaning the fountain, DO DISCONNECT the power supply. Do not flush the metal contacts directly or soak in the water. Clean the body using a dry cloth.
3. Do keep the contacts DRY. If the contacts are dirty, wipe them with a cloth.
4. Children must use the unit under the guidance of an adult.
5. Please place the unit on the flat ground to prevent accidental overturning, causing the fountain to sprinkle or not work correctly.
6. Please shield or organize the power cord well to prevent the pet from biting the cable.
7. This fountain is suitable for cats or small and medium-size dogs.

07 / Warranty Terms

Within the period of warranty, if the product fails with no fault of user operations, it will be repaired at Pettadore their expense. Product failure in examples below will not be covered by the warranty:

1. Intentional damage to product by the user or third party.
2. Failure to operate or maintain the product following the Quick Installation Guide (QIG) instructions.
3. Failure by natural wear and tear including but not limited to scratching, corrosion, oxidation and rusting.
4. Failure by non-authorized repair of the product including but not limited to user's own or third-party repairing attempts or modifications.

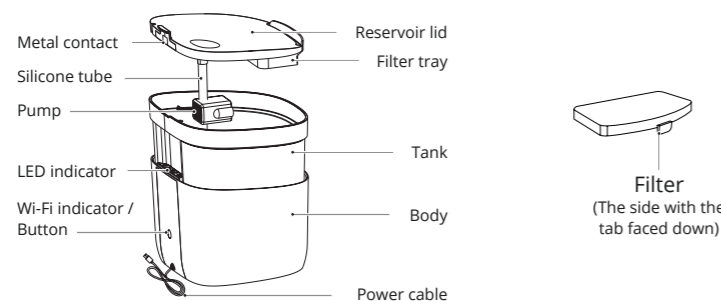
! For other languages see pettadore.com/pages/manuals !

Hydrate Compact

User Manual

For other languages see pettadore.com/pages/manuals
Please read this manual carefully before using.
Keep the manual in a safe place for future reference.

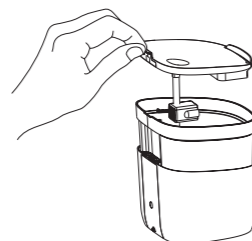
01 / Meet your Hydrate Compact



02 / Operations

1) Clean up

Clean the tank and reservoir lid. Do not flush the metal contacts directly or soak in the water. Soak the filter in the water for 1-3 minutes. Clean the body using a dry cloth.



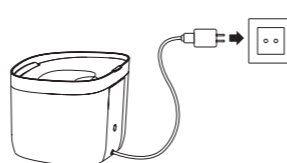
2) Fill up

Pour water into the tank. Do not exceed the max water level.
* The first time after fill-up, the pump will automatically extract the air before it pumps water. In this process, the water flow will gradually increase to stabilize.



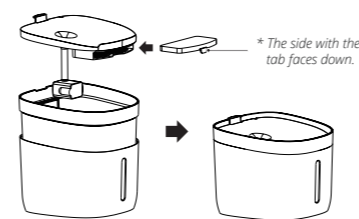
4) Power on

Connect the USB cable to a 5V/1A power supply, then connect A/C adapter to the wall outlet. The fountain starts working, after the indicator flashes in red and blue alternatively once.



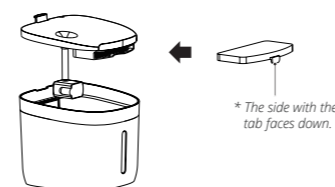
3) Assemble

Please put the tank, reservoir lid and filter the right places according to the illustration.



5) Filter replacement

It is recommended to replace the filter every 30 days.
* Soak the filter in the water for 1-3 minutes before use.



03 / Quick Setup

1. Scan the QR code on the right and download the Pettadore App which is available on App Store and Google Play. Click Sign up to get walked through to create your Pettadore account.



2. Power on and ensure the Wi-Fi Indicator LED is blinking fast reflecting the device is ready for joining the Wi-Fi. Open the Pettadore App and click the '+' button and get walked through the SET-UP steps.

Notice: 1. The fountain doesn't support the 5GHz Wi-Fi, please make sure your Wi-Fi is 2.4G.
2. If the Wi-Fi indicator is not blinking fast after power-on, please long press and hold the button until the indicator blinks quickly.

04 / Troubleshooting

Problem	Possible reason
Blinking red & no water coming out	The reservoir lid is not placed properly, or the metal contacts are not in place. Fountain is out of water, please refill.
Red/Blue flashing alternatively & water not steady coming out	Fountain is running out of water, please refill.