

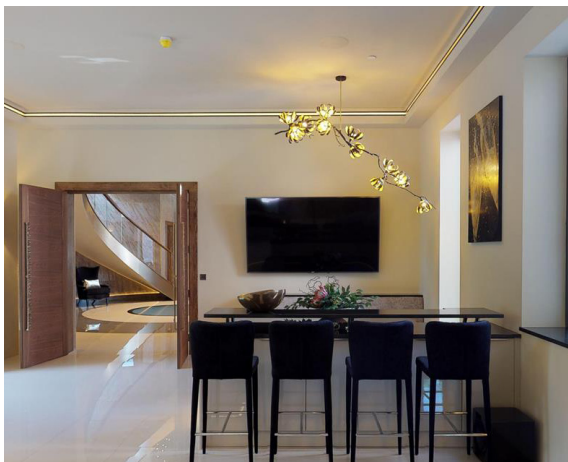


GEORGINA CHANDELIER CASCADE

The Georgina collection is shaped by nature and uses real tree branches to create the structure of each piece. The process begins by carefully selecting and arranging the branches. After its been carved and wired it is then hand wrapped with layers of carbon fibre until it becomes hard as steel. Each piece is absolutely unique and is meticulously hand-crafted in our London studio.

The flowers are available in Black Maple veneer with Gold Leaf, Maple veneer or Walnut veneer. Carbon fibre and glass berries available upon request.

Bespoke materials, sizes and arrangements available upon request.



Size  will vary


W	D	H
200-400	40-60	100-200 (cm)

Weight  will vary 3-10kg

Bulb  UK & Europe
E14 [not included] 7W Max wattage
Dimmer switch compatible


USA & Canada
E12 [not included] 7W Max wattage
Dimmer switch compatible


Materials  Wood, Carbon Fibre

Cable  100cm Length, black
100cm Brass tube (Stem length not adjustable, please specify drop length)

USA & Canada (110v wiring and fittings supplied)
100cm Brass tube (Stem length not adjustable, please specify drop length)

Ceiling Rose  Diameter 11cm
Colour Black or White

Leadtime  This product is made to order. Please allow up to 3-6 weeks for delivery.


Care  Clean with a soft dry cloth only. Do not use polishing agents, water or abrasive materials when cleaning. Always switch off the electricity supply before cleaning.

Indoor use only.

Dimensions are approximate and although every care has been taken to ensure that the colours are reproduced accurately, as some items are natural materials and are handmade, shading and dimensions may vary slightly from the product pictured. Samples can be supplied before production.

Shipping  International Shipping Available

Birth  Handmade in the UK

Contact  **7Gods Limited**
Unit 22, 1-7 Grenville Road, London N19 4EH
+ 44 (0) 20 7100 1937 hello@7gods.co.uk