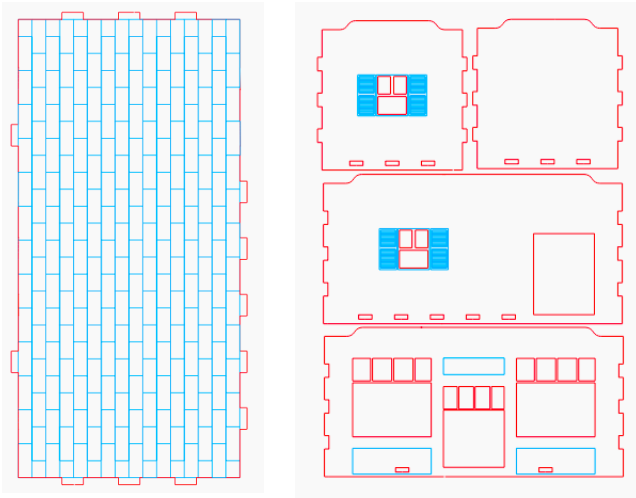


French Cafe Instructions

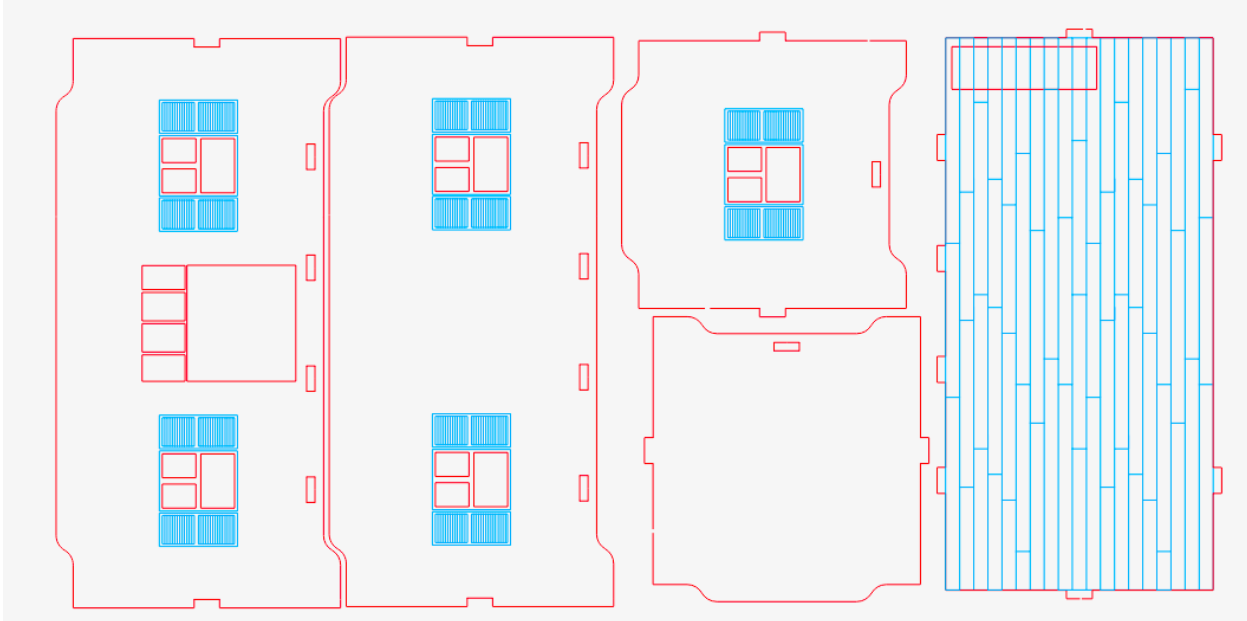
1. Ground floor

Create a open top box from these parts



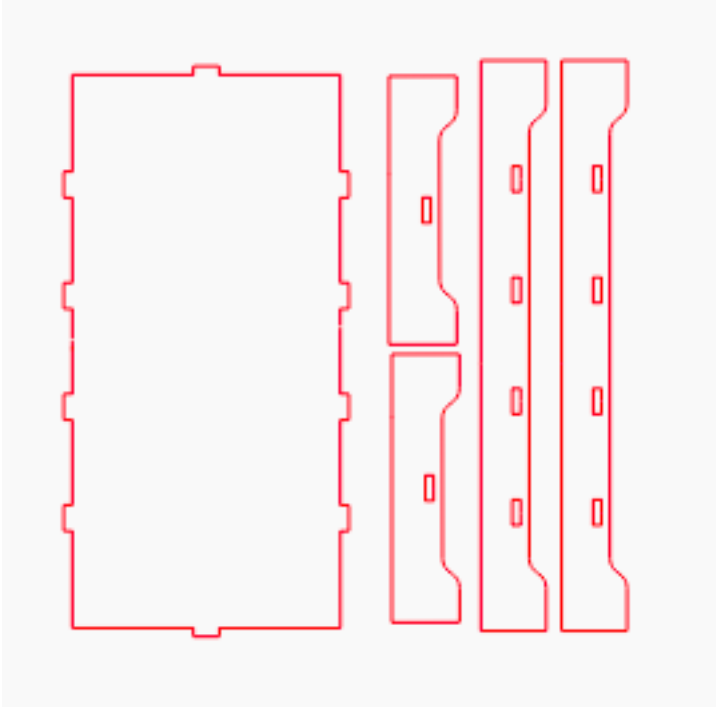
2. Second Floor

Create another open top box from these parts



French Cafe Instructions

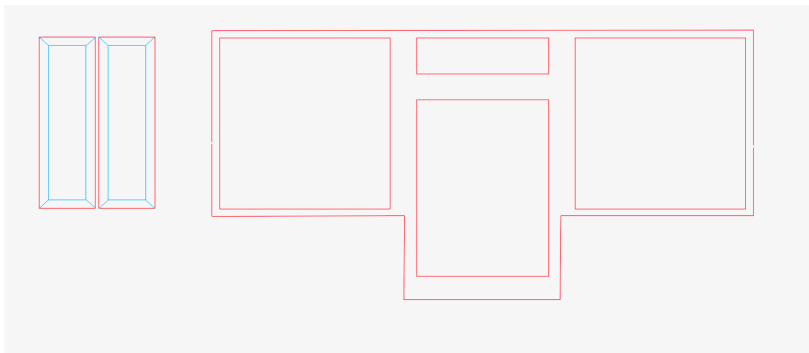
3. Roof



At this point you should have a stackable set of 3 pieces. You might want to paint it now, or you can build the entire model and paint when complete.

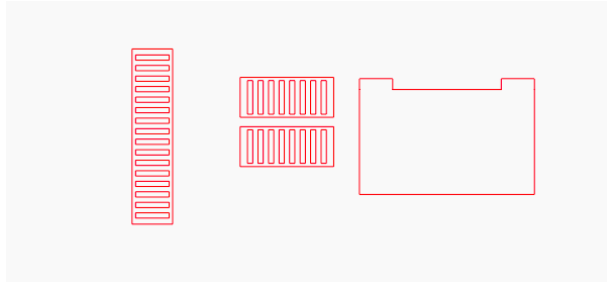
DETAIL PIECES

4. Glue window and door frame to front face of the first floor and add the 2 rectangular details. Do this again for the second floor.-

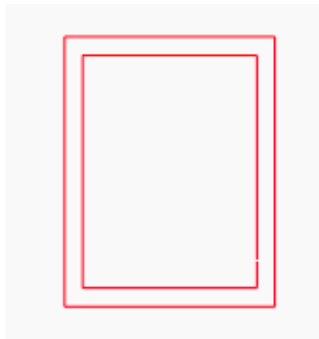


French Cafe Instructions

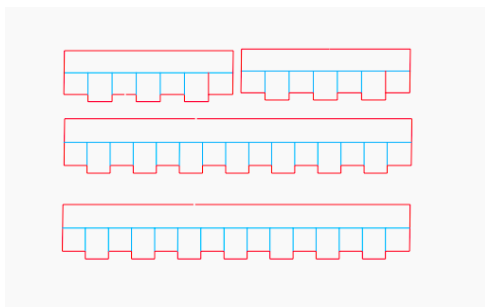
5. Balcony for second floor. - Insert the platform below the center window of the second floor first, and then glue the rails on the platform.



6. Back door frame - glue the door frame to the back



7. Roof details. - Glue the roof details on as shown. You can use the sign as shown or not at all.



French Cafe Instructions

8. Stairs- Make a stack of 5 and glue. Glue to the wall of the first floor.



9. Tables

