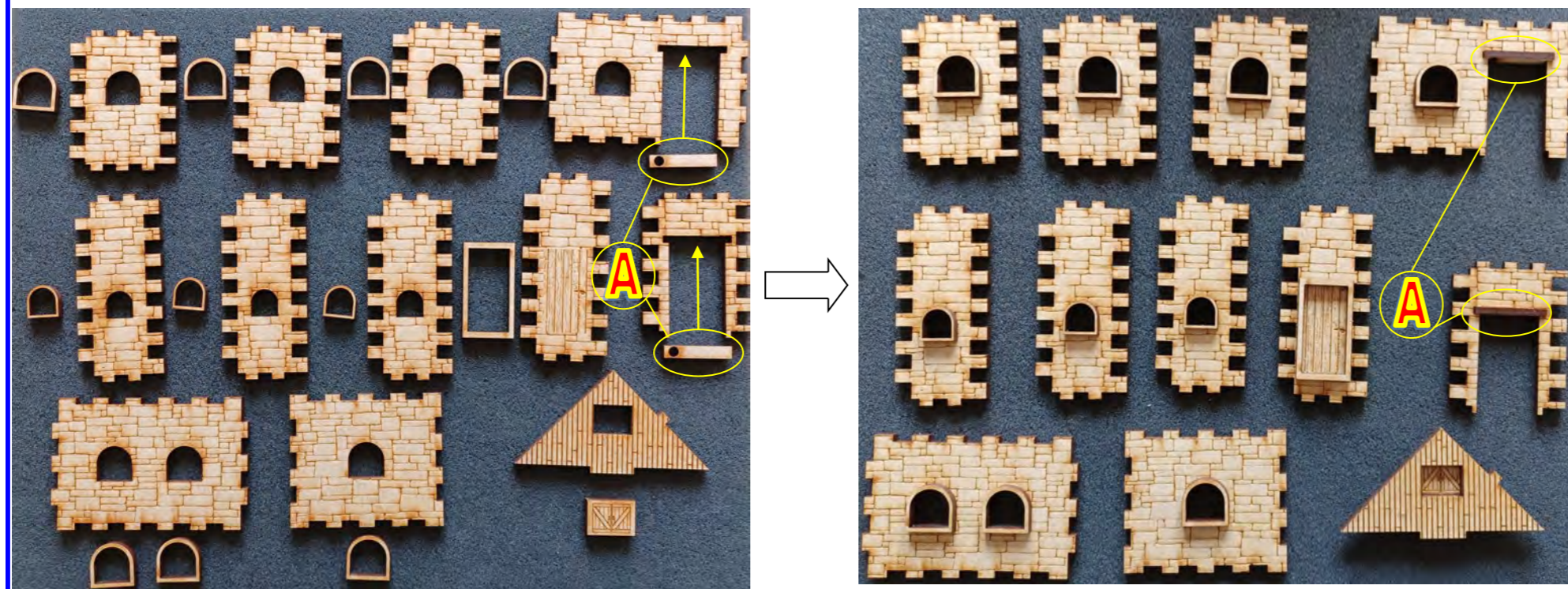


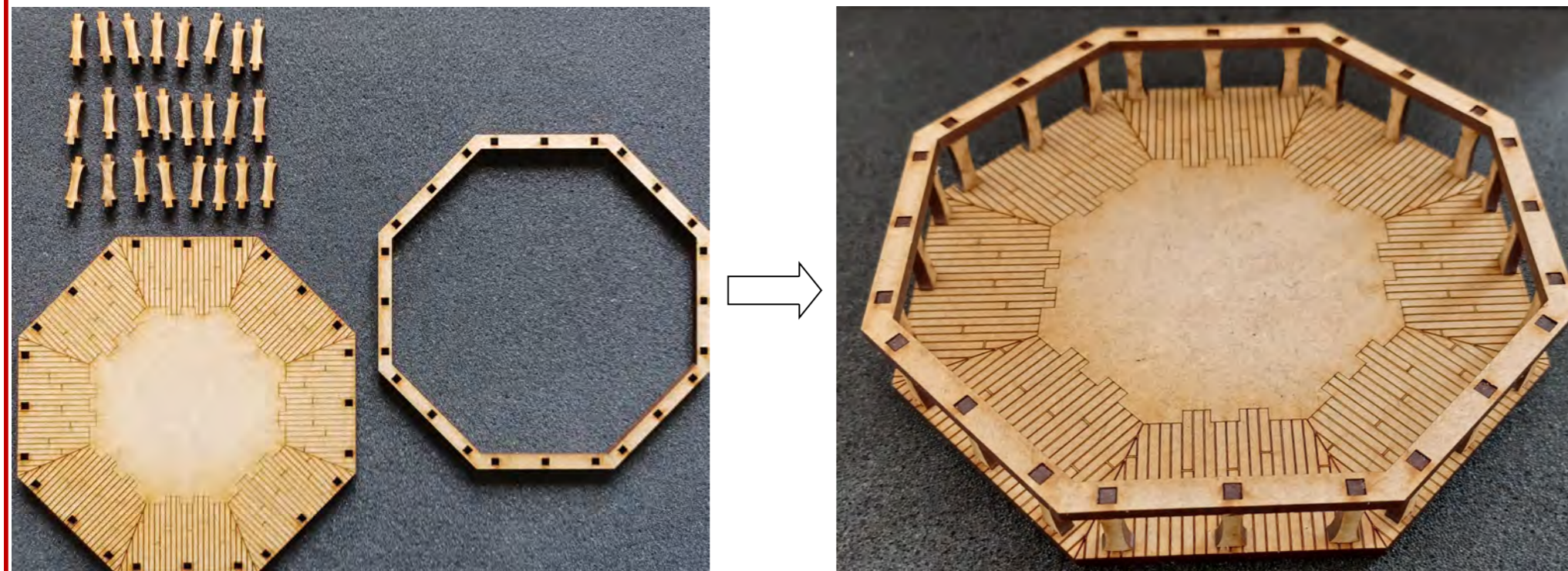
# Assembly Instructions for "European 18th Century Wind Mill"



**1: Glue windows, door frame and gate onto wall and roof pieces. Glue pieces A onto wallpiece. Make sure piece A is centered in wall piece and that the hole is to the left.**



**2: Glue together shown pieces for the balcony of the windmill. This can be a bit tricky, as there are many holes and dots that have to fit.**



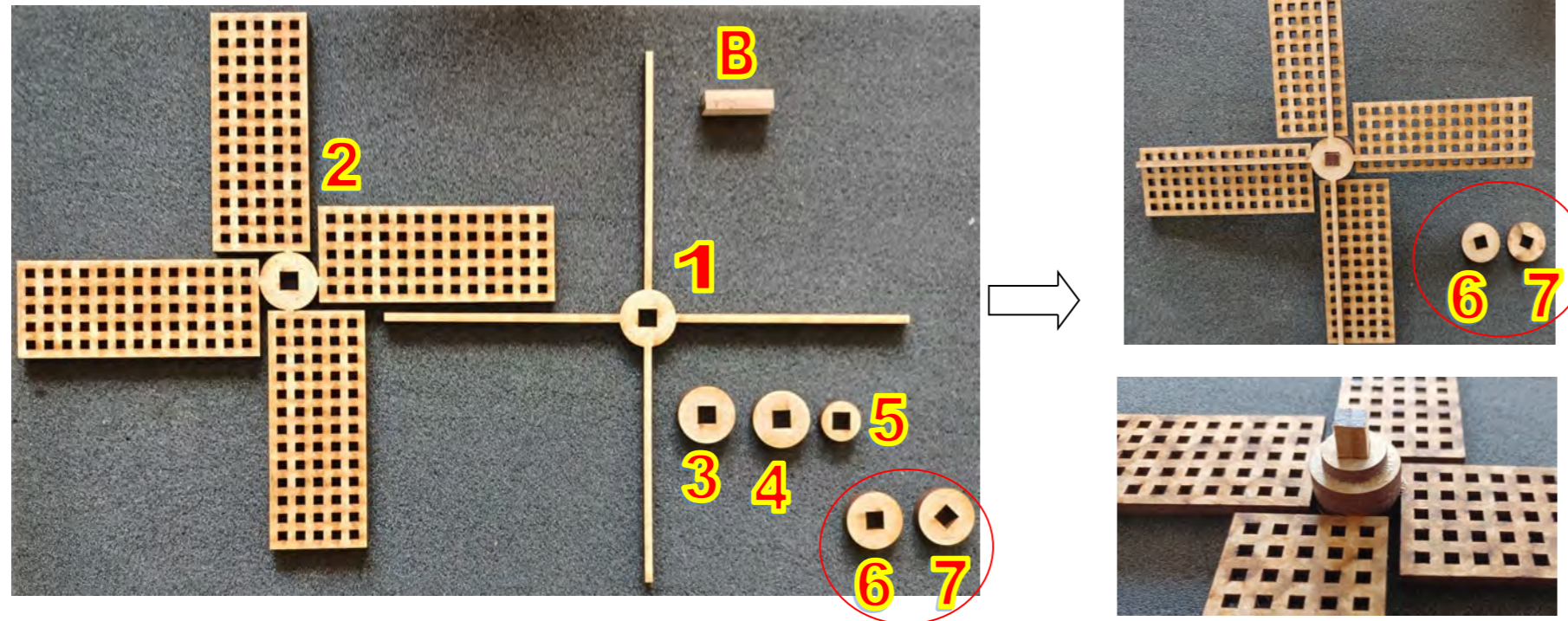
**3: Glue together shown pieces (3 x 6 x 24 mm). When glue is dry, grind the four long sides a bit using sandpaper.**



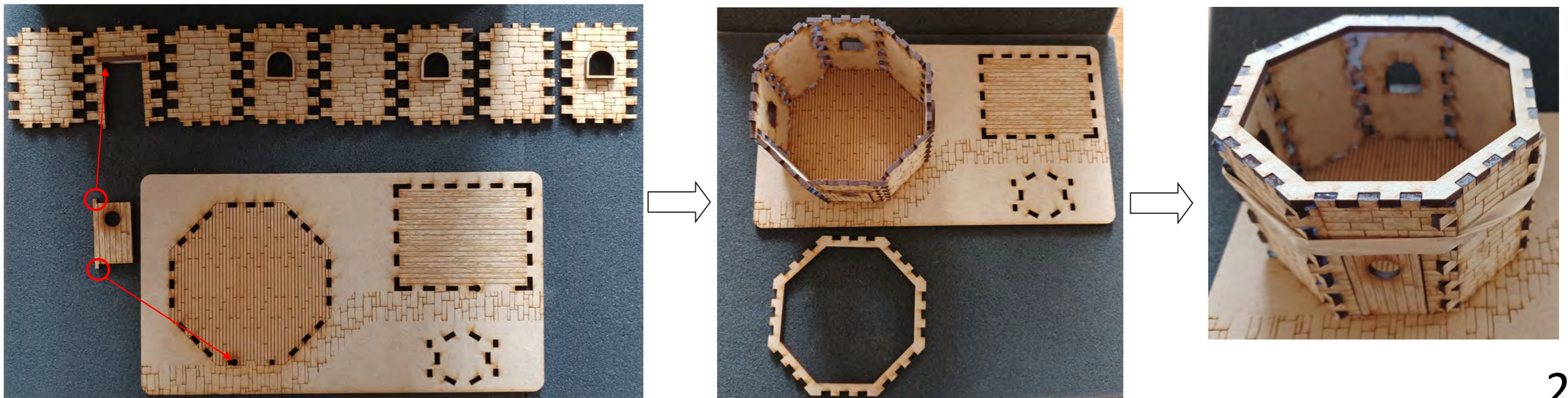
# Assembly Instructions for "European 18th Century Wind Mill"



4: Glue shown pieces onto piece B. Glue in the shown order. Leave out pieces 6 and 7 for now.



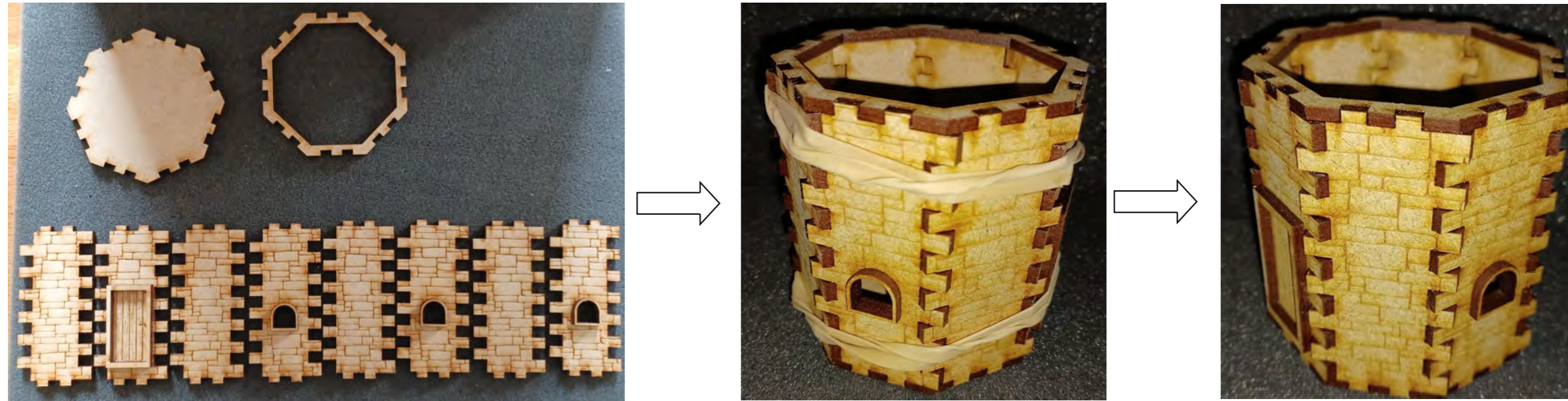
5: (This can be tricky too.) Glue shown pieces for the windmill ground floor onto the bottom piece in the shown order. Add the glue where the taps on the wall piece connect with another wall piece. It is not necessary to add glue to the taps on wall pieces that goes into holes in bottom piece. They're designed to lock into each other when you apply a bit of force. Taps on door goes into holes in bottom piece and wall piece. Do NOT glue door. When wall pieces are in place, glue the top onto it. Add a rubber band until glue is dry.



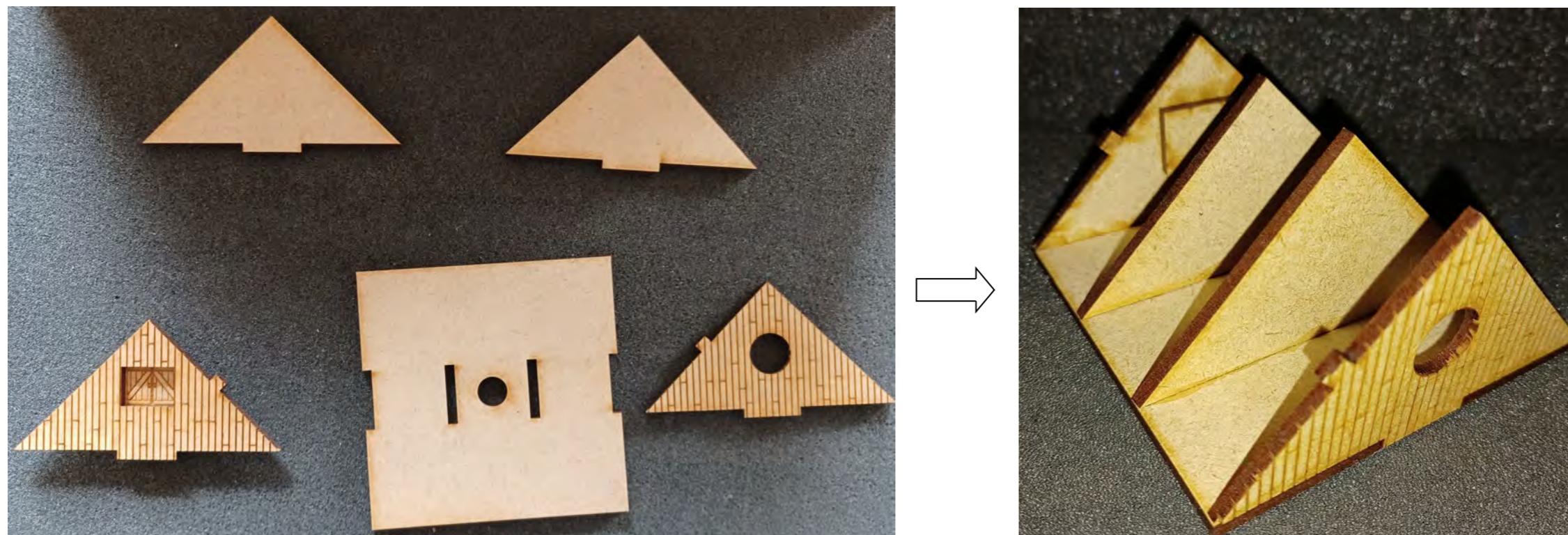
# Assembly Instructions for "European 18th Century Wind Mill"



6: Glue together shown pieces for the 1st floor of the windmill. Glue in the shown order. Add a rubberband or two until glue is dry.



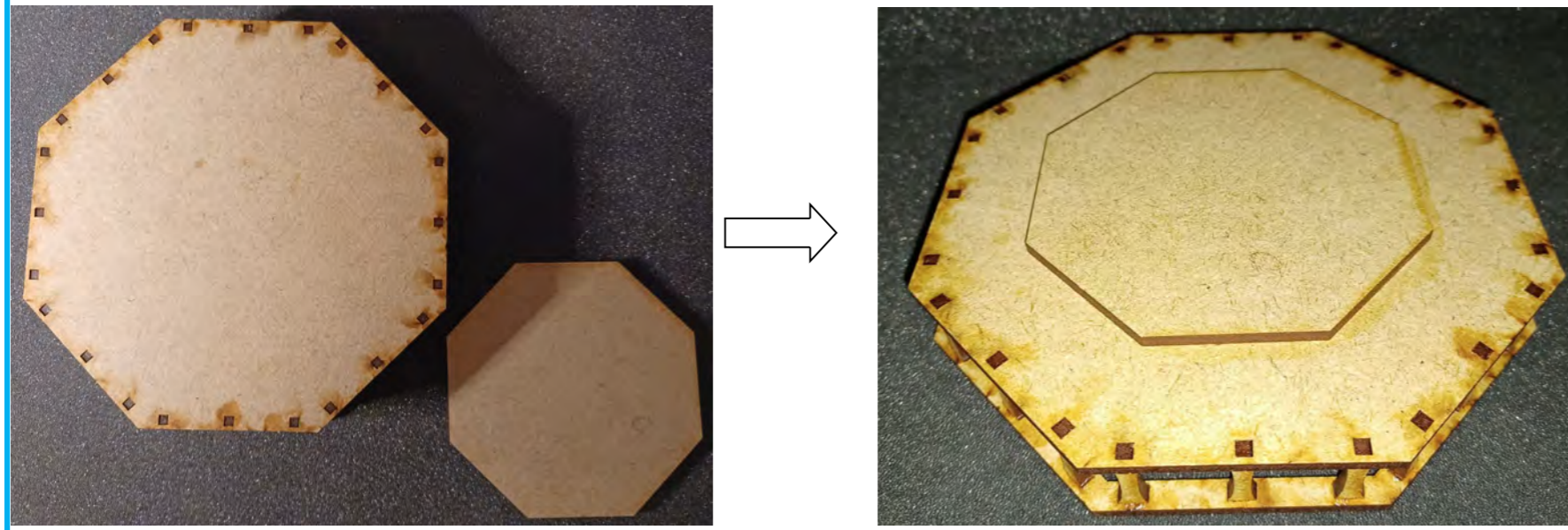
7: Glue together shown pieces for the windmill roof.



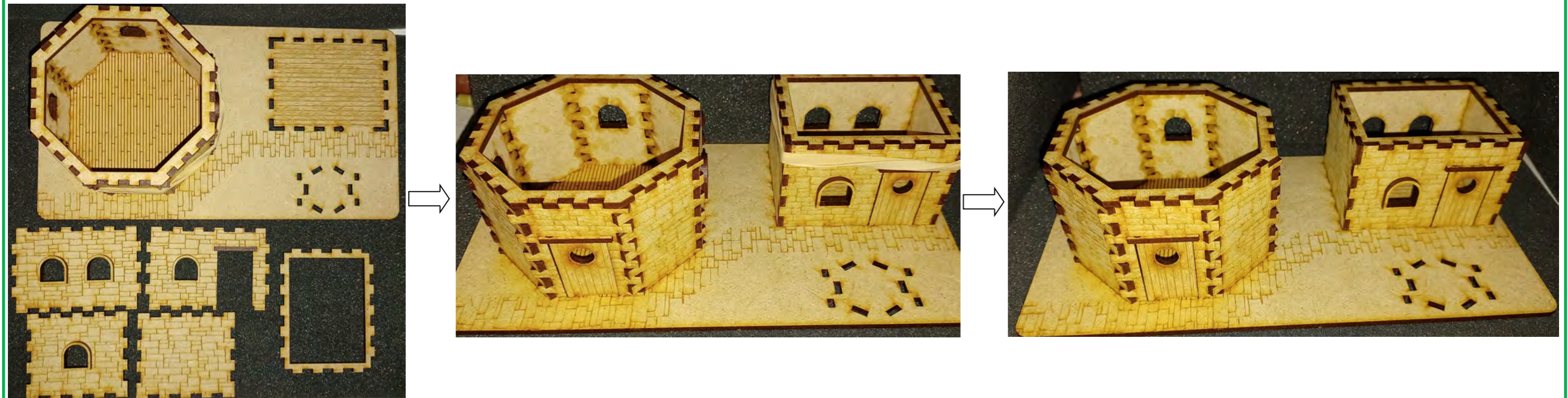
# Assembly Instructions for "European 18th Century Wind Mill"



8: Glue shown piece onto the bottom of the balcony. Make sure piece is centered.



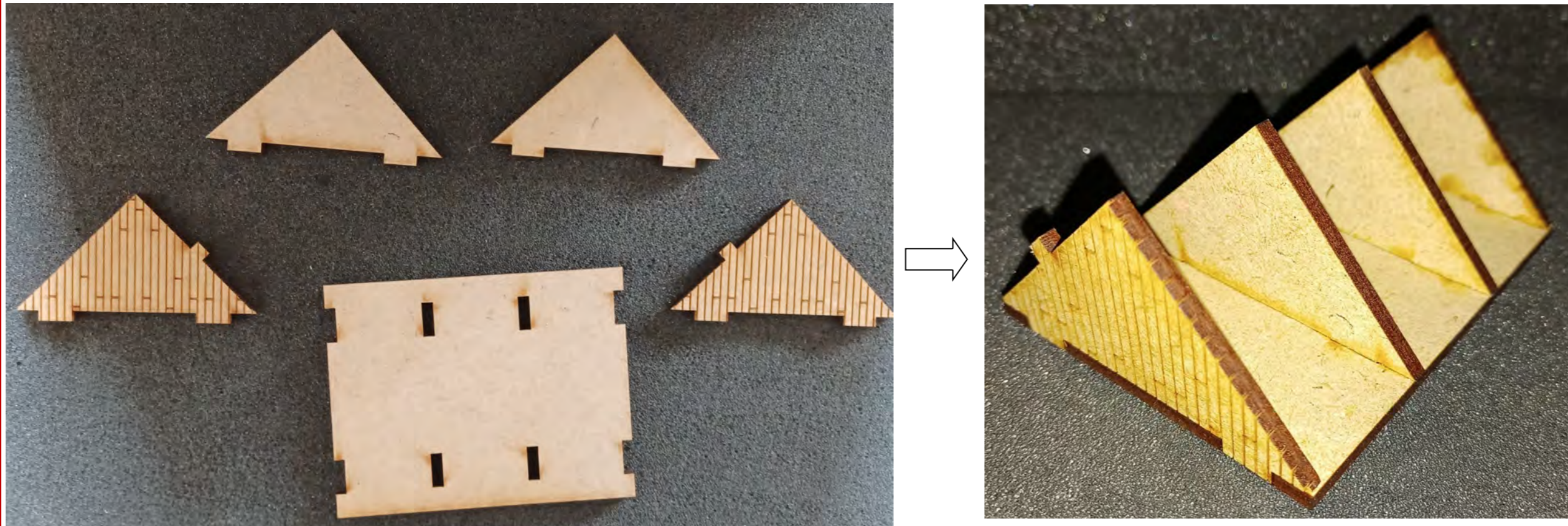
9: Glue shown pieces for the millers house - ground floor - onto the bottom piece. Add a rubberband until glue is dry.



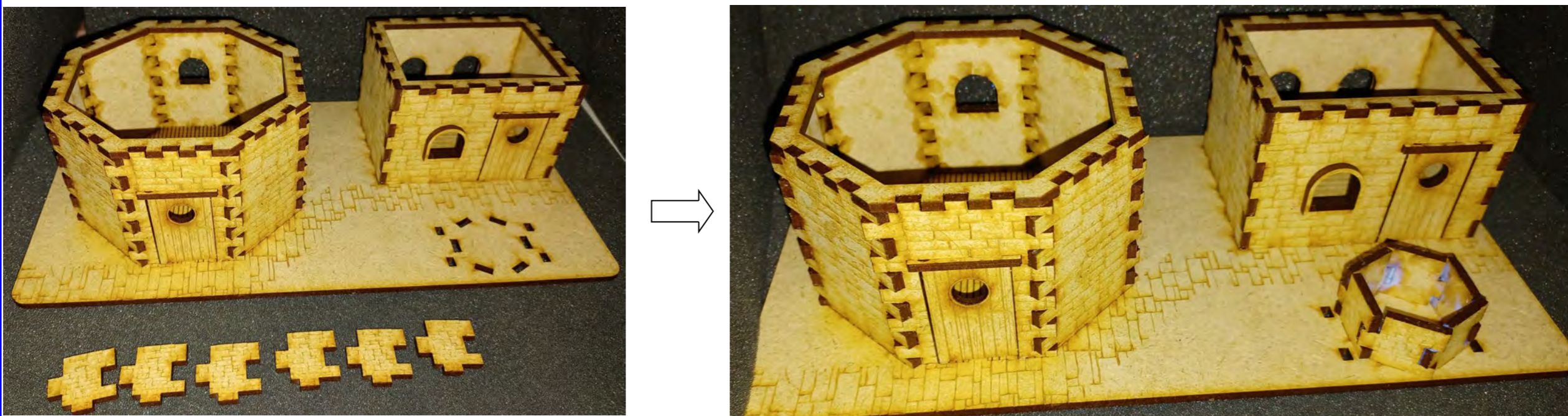
# Assembly Instructions for "European 18th Century Wind Mill"



10: Glue together shown pieces to make the roof for the millers house.



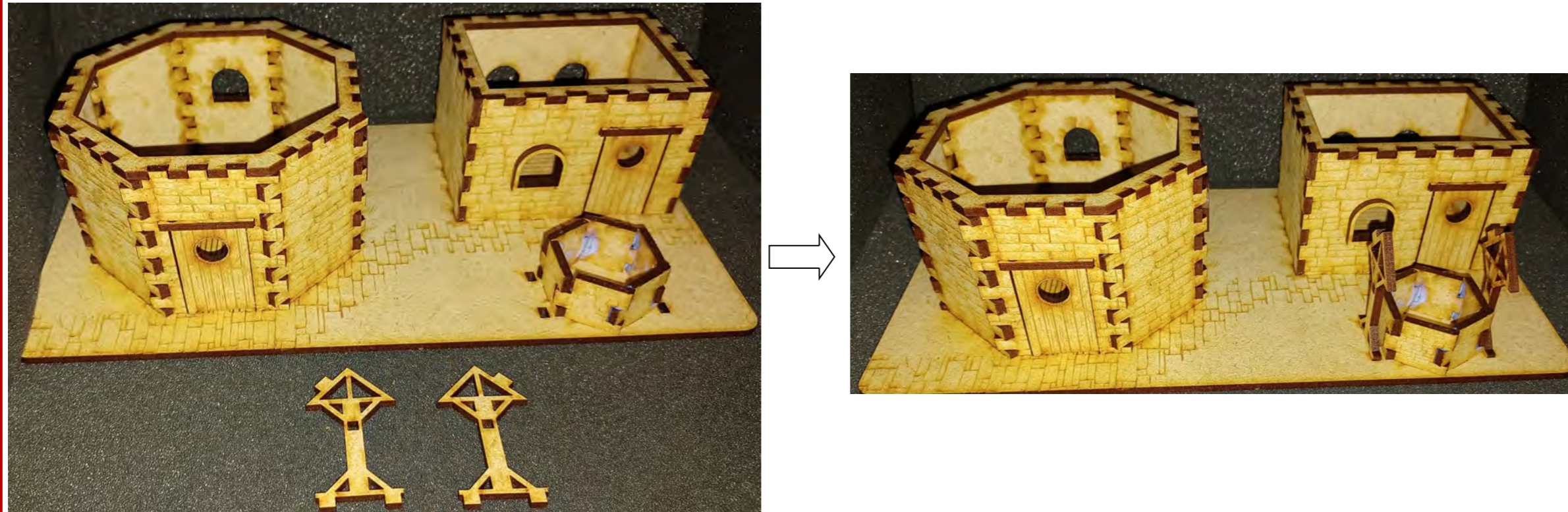
11: Glue shown pieces for the well onto the bottom piece.



# Assembly Instructions for "European 18th Century Wind Mill"



12: Glue shown pieces onto bottom piece.



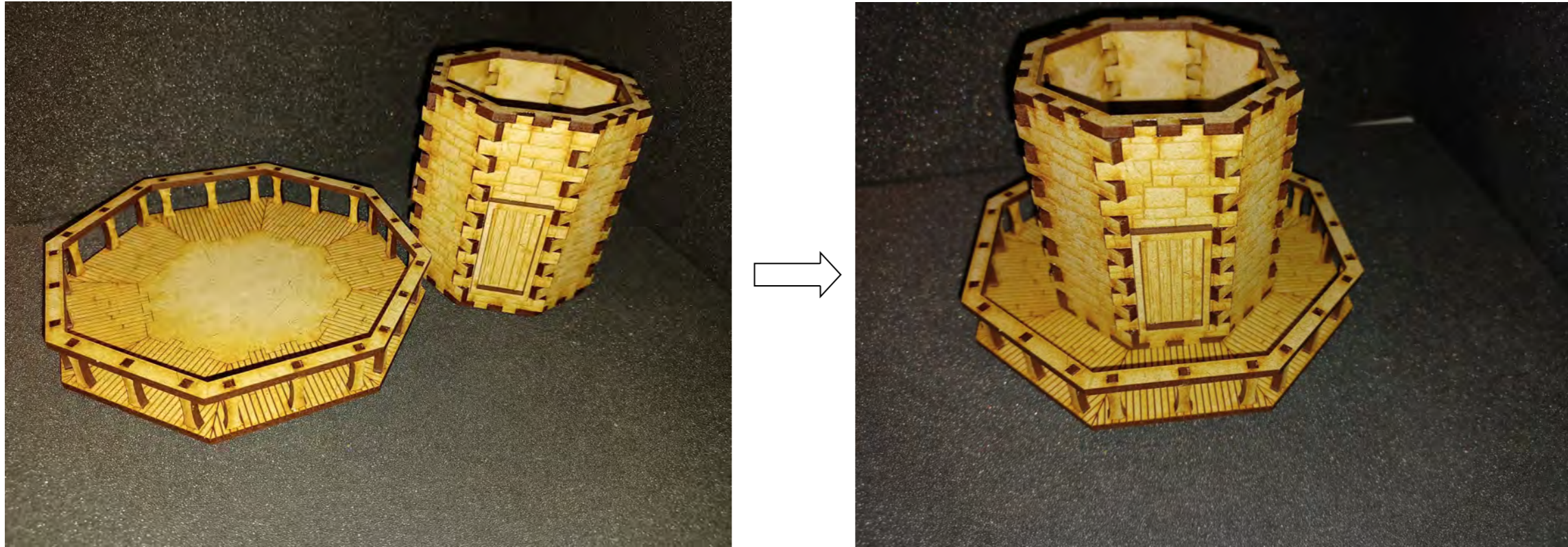
13: Glue the last pieces onto the well.



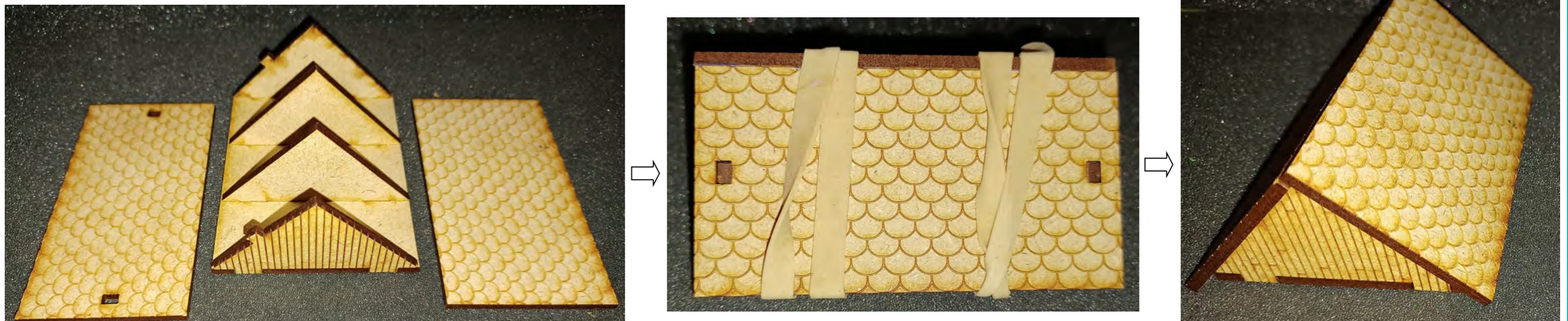
# Assembly Instructions for "European 18th Century Wind Mill"



14: Glue 1st floor onto balcony. Make sure piece is centered.



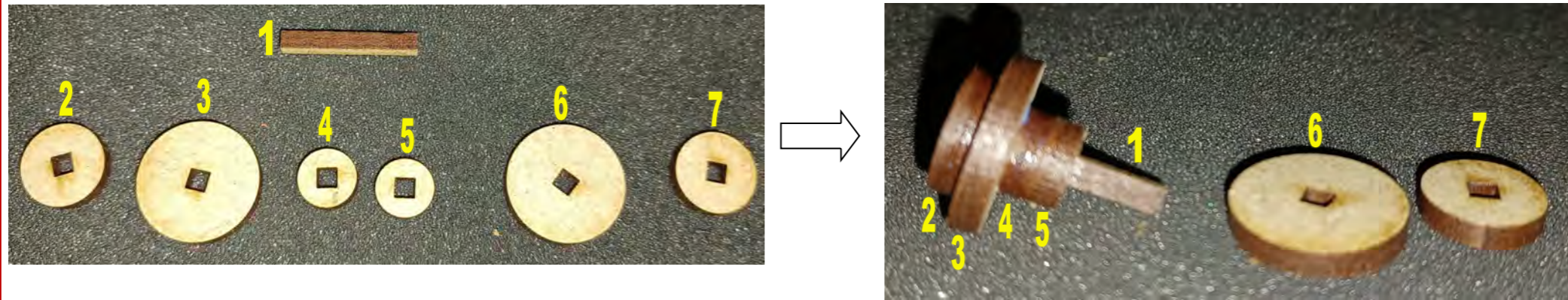
15: Glue shown pieces onto roof for millers house. Add a rubberband or two until glue is dry.



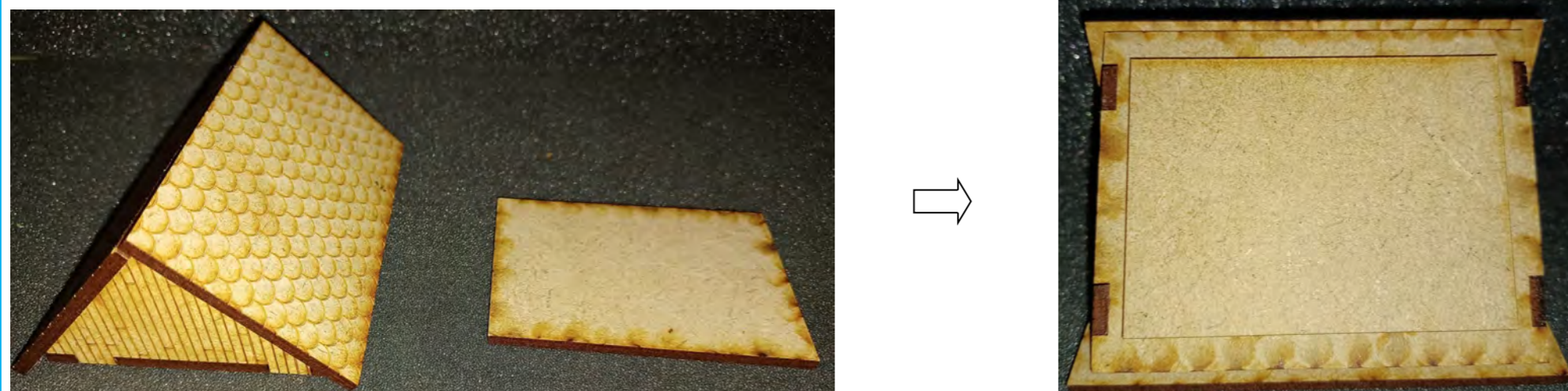
# Assembly Instructions for "European 18th Century Wind Mill"



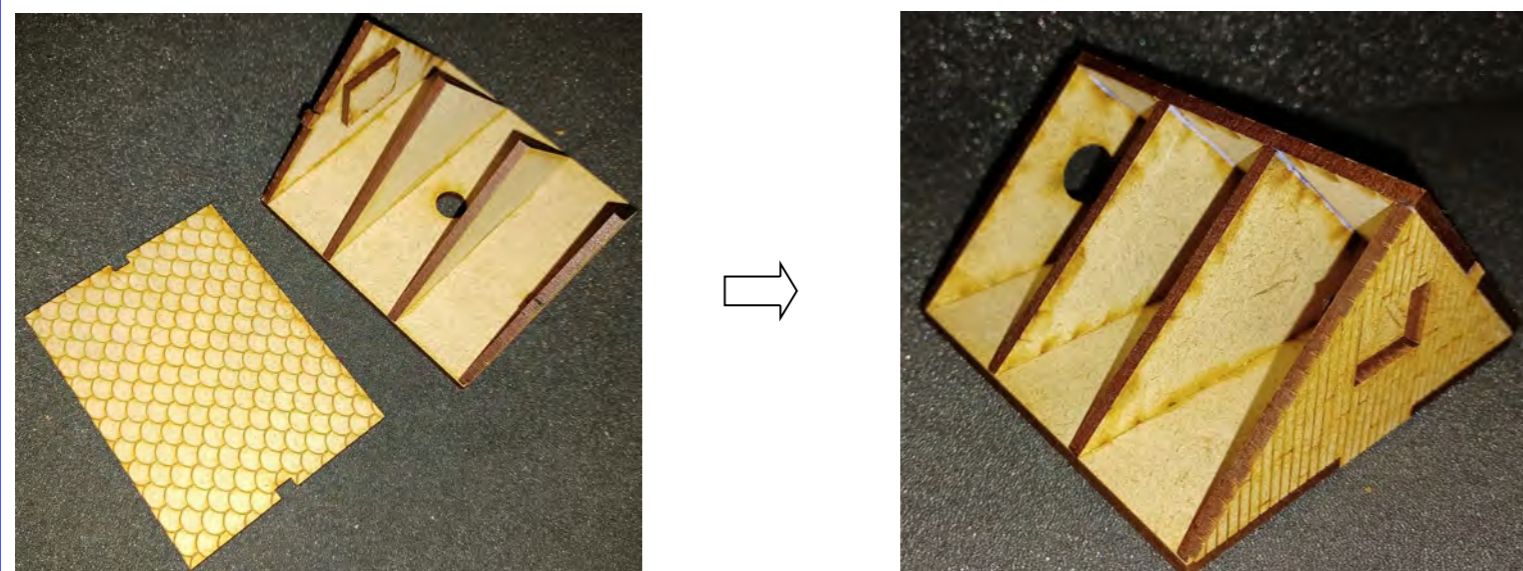
16: Glue together shown pieces in the order shown. Leave out part 6 and 7 for now.



17: Glue shown pieces onto bottom of the roof for the millers house. Make sure piece is centered.



18: Glue shown pieces onto roof for the windmill.

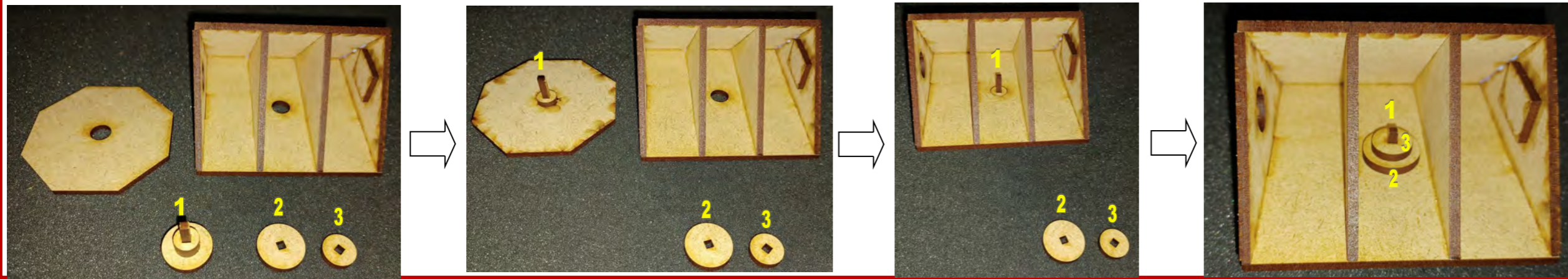




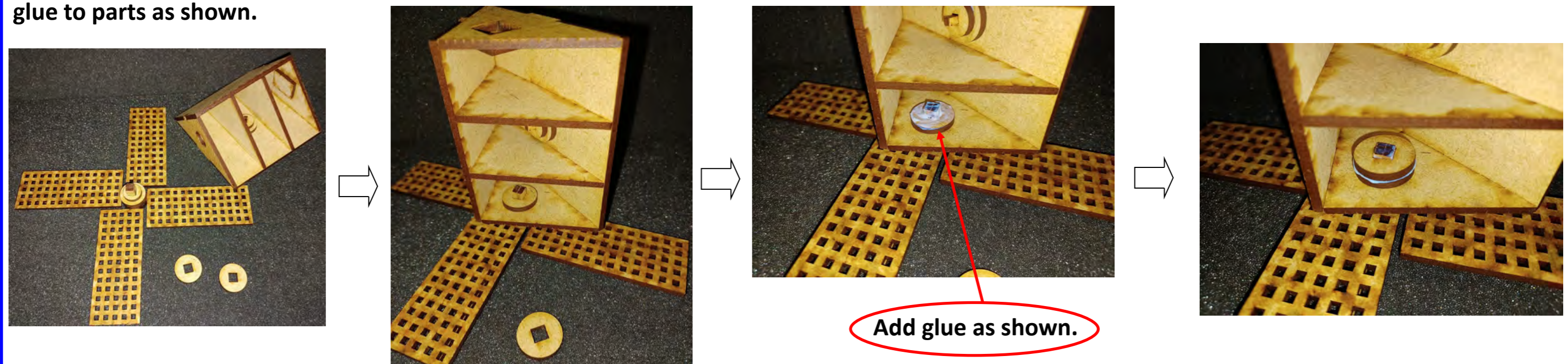
# Assembly Instructions for "European 18th Century Wind Mill"



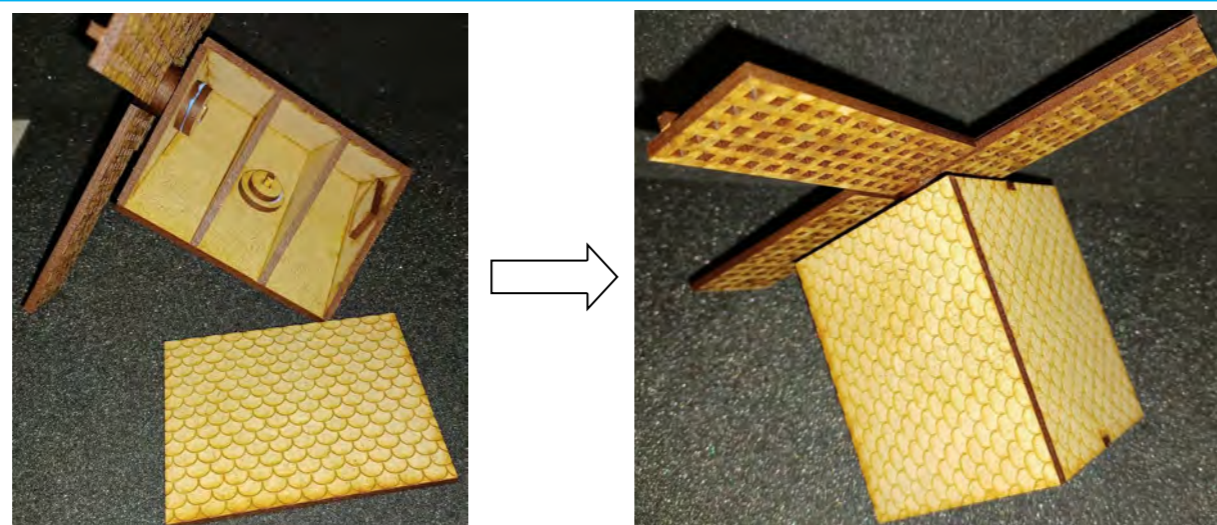
19: Assemble the parts in the shown order. DO NOT use glue until you add the last piece, as this would make the windmill roof unable to turn. Only add glue to part 1 and between part 2 and 3.



20: Assemble the parts in the shown order. DO NOT use glue until you add the last piece, as this would make the wings unable to turn. Only add glue to parts as shown.



21: Finally, glue the last piece onto the windmill roof.



# Assembly Instructions for "European 18th Century Wind Mill"

