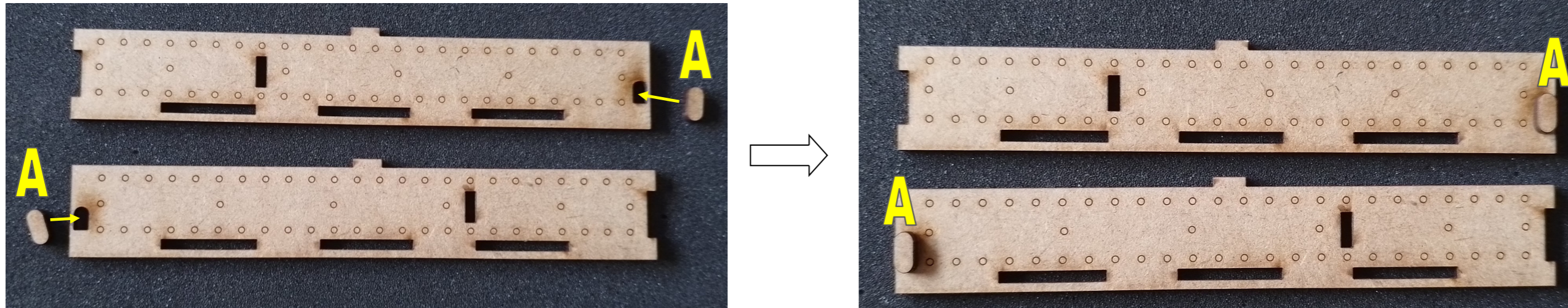


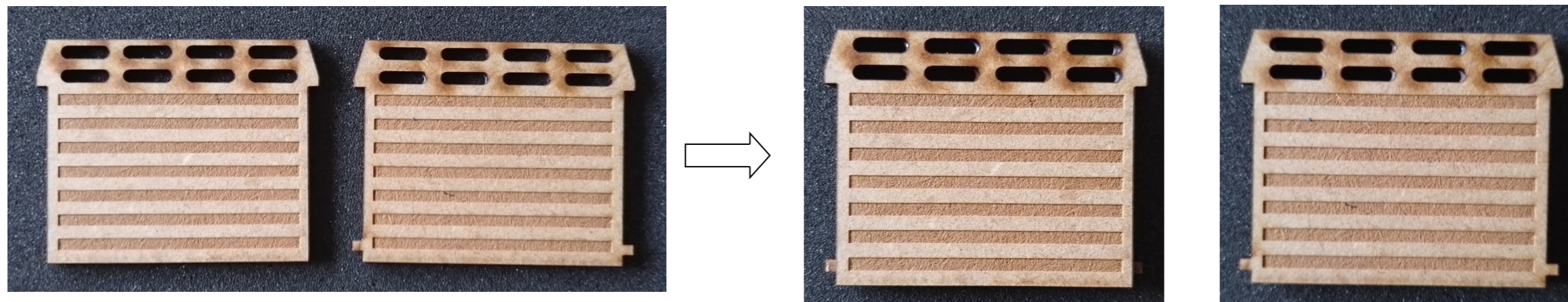
Assembly Instructions for "Landing Craft Tank (LTK)"



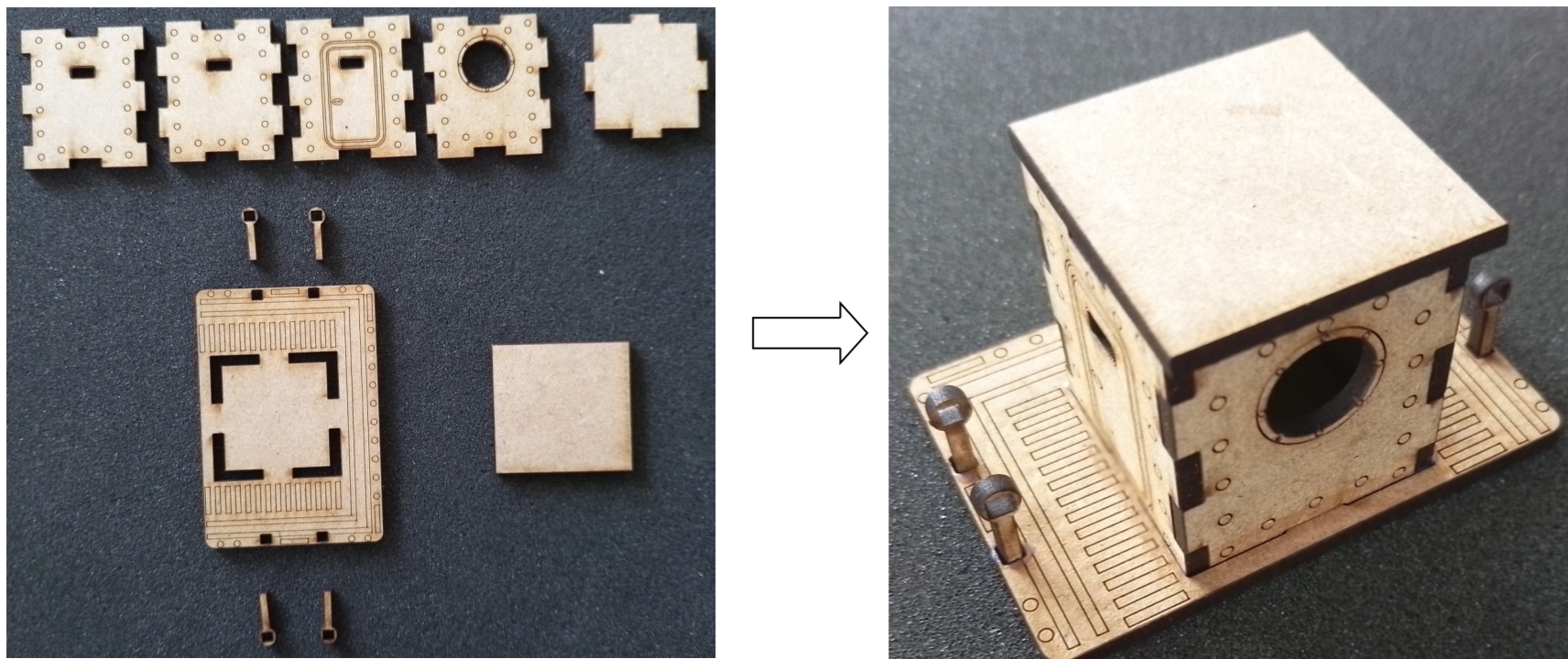
1: Glue pieces A i front of hole on side pieces.



2: Glue together shown pieces for the bow visor.



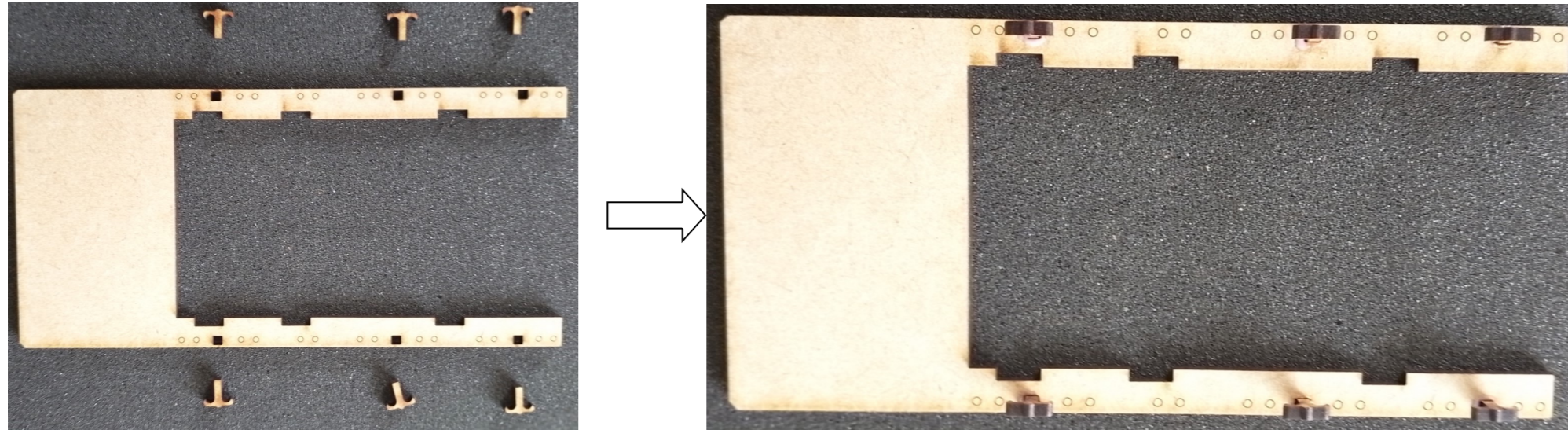
3: Glue together shown pieces for the wheelhouse.



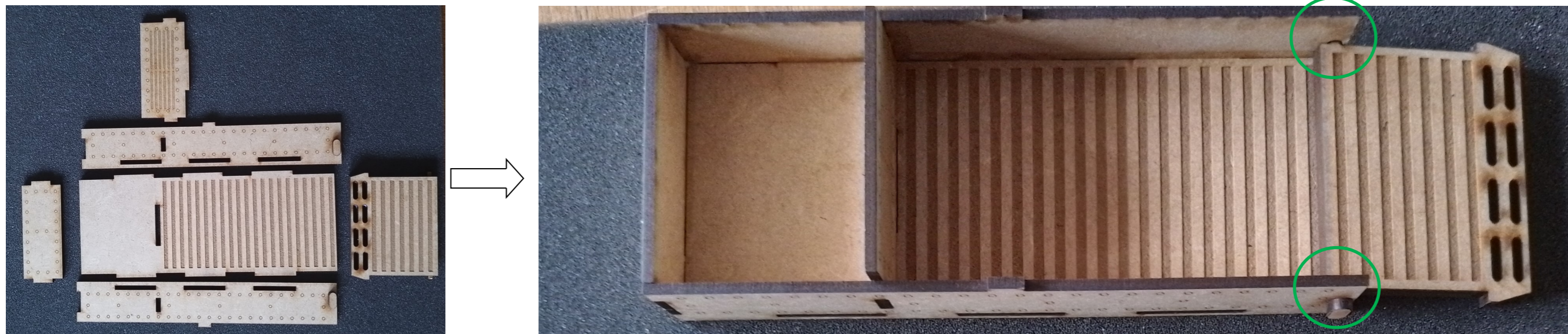
Assembly Instructions for "Landing Craft Tank (LTK)"



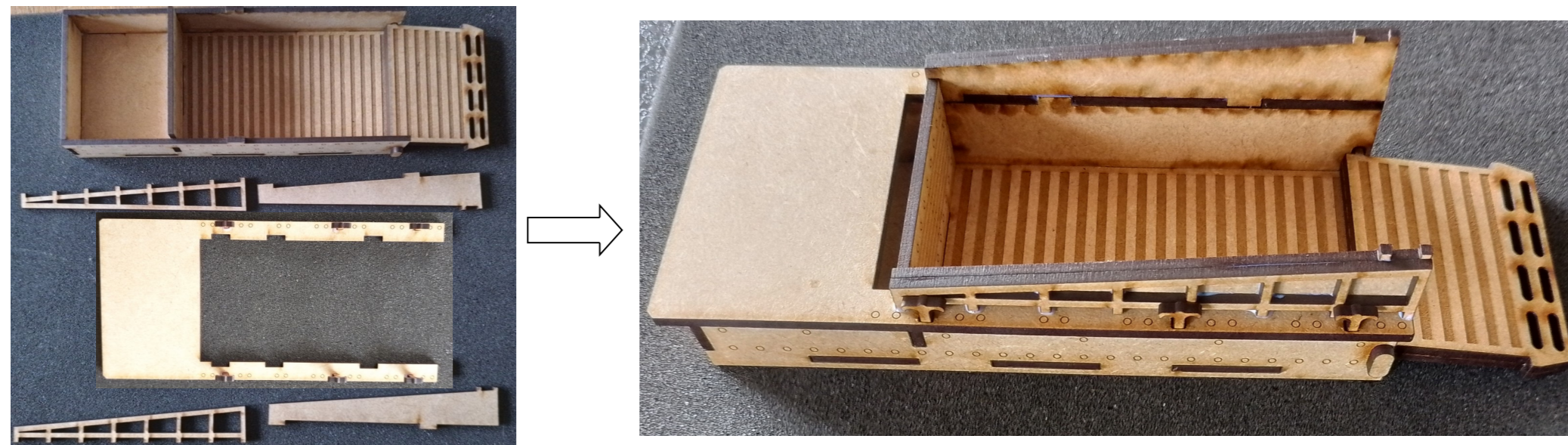
4: Glue the mooring gear onto the top piece of the landing craft.



5: Glue together shown pieces for the ship frame. The taps on the bow visor goes into the holes in the front of the sides. Place the bow visor with the taps facing inward. (Green circles) DO NOT glue the bow visor.

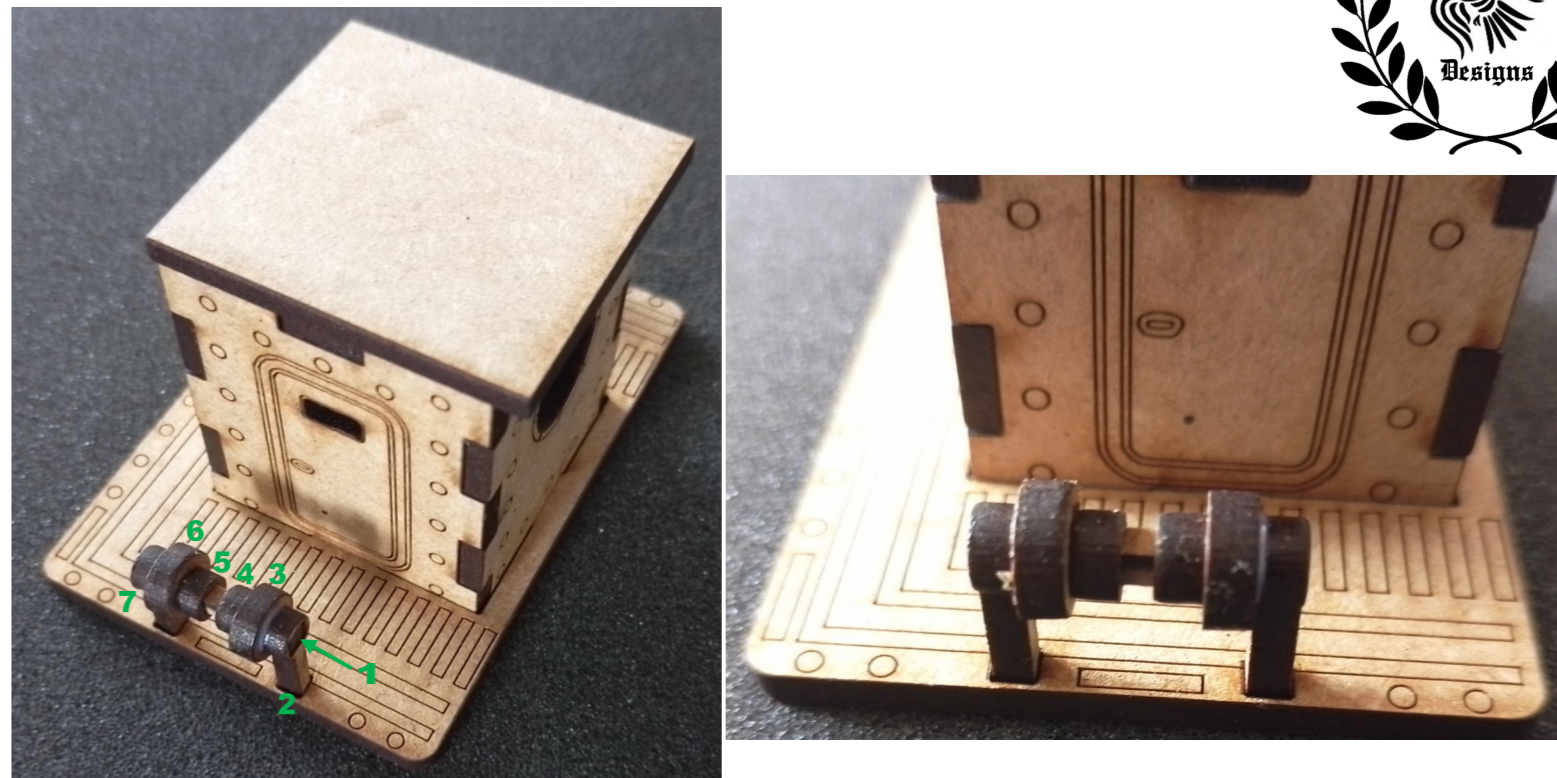
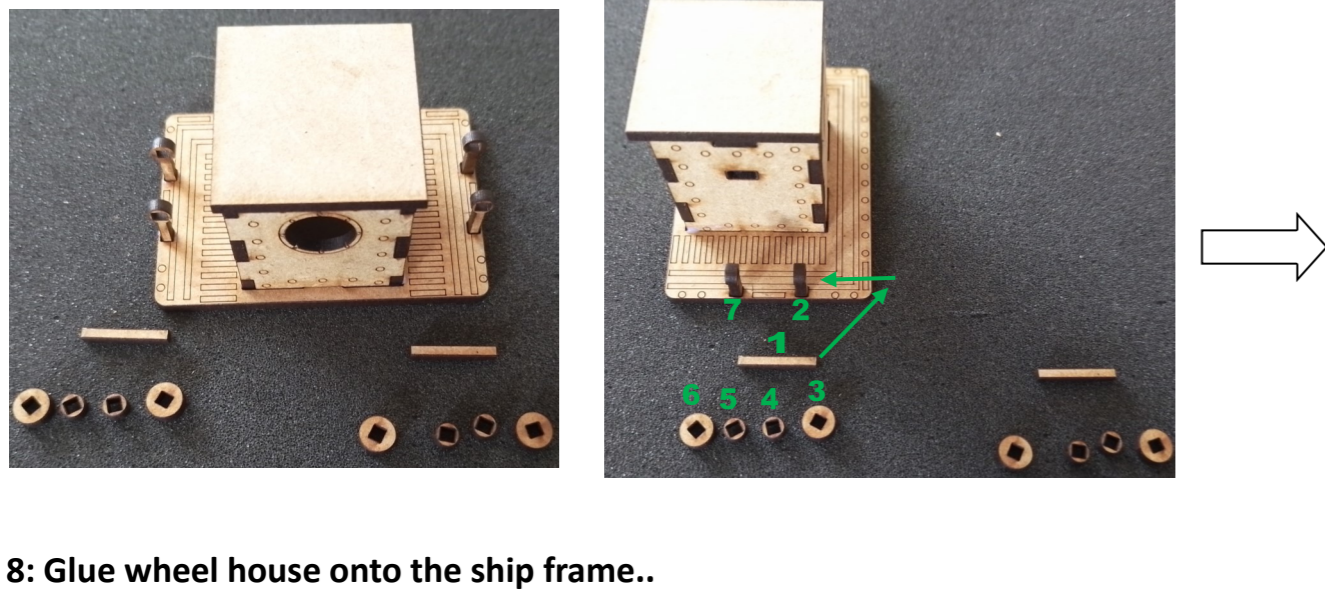


6: Glue shown pieces onto the ship frame.



Assembly Instructions for "Landing Craft Tank (LTK)"

7: Glue shown pieces onto the wheel house on both sides for the ship pulling cables.
 Glue in the shown order.



8: Glue wheel house onto the ship frame..

