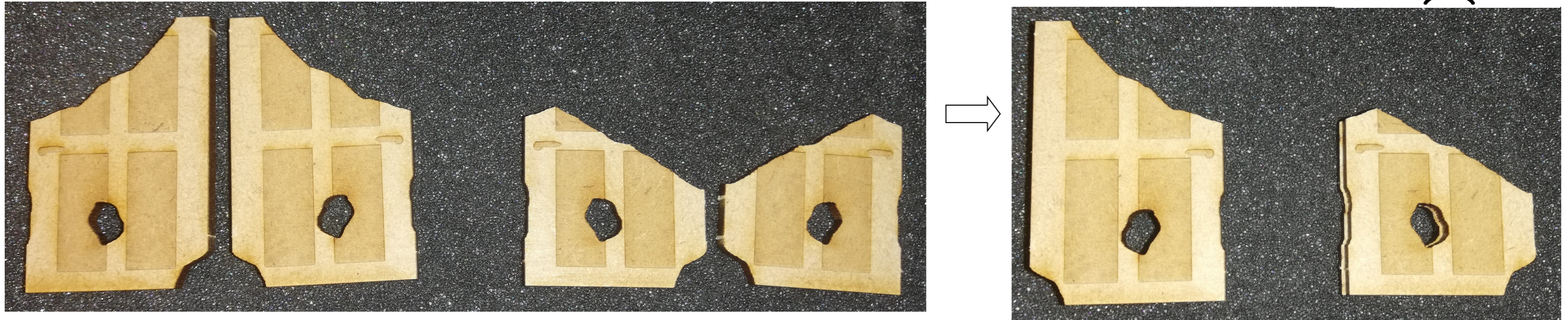


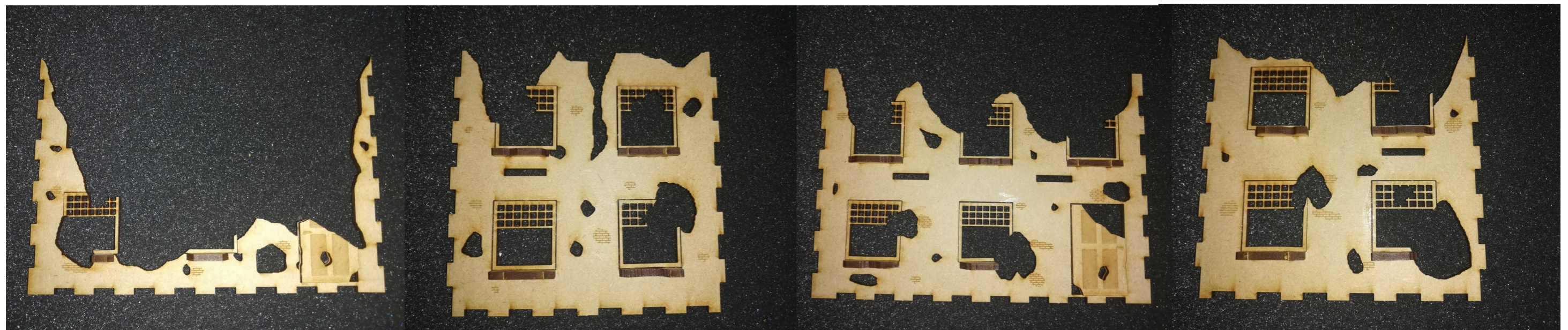
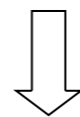
Assembly Instructions for "Ruined Two-Storey Building"



1: Glue together door pieces (sandwich)



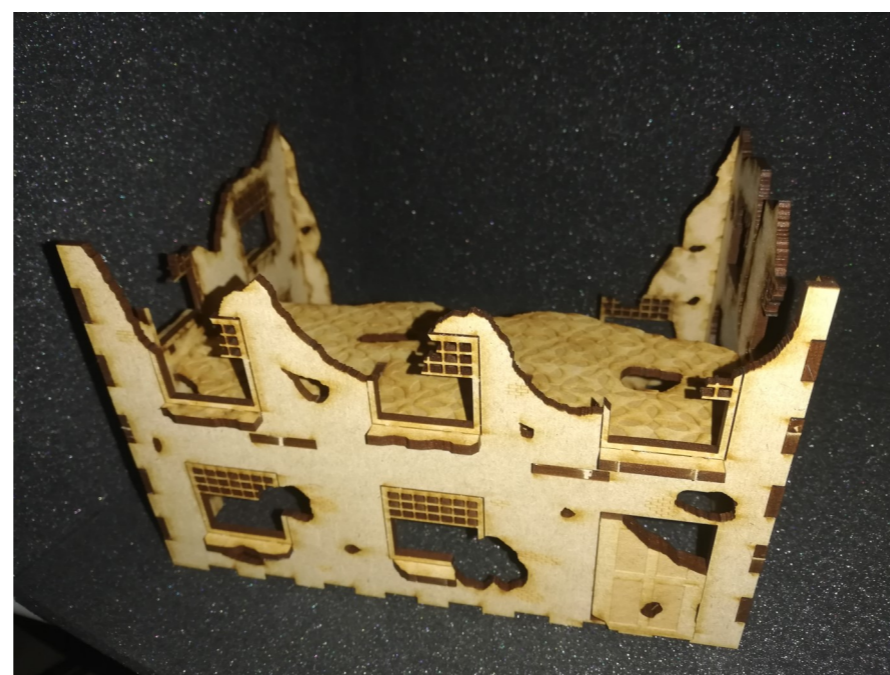
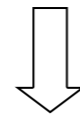
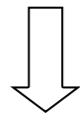
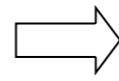
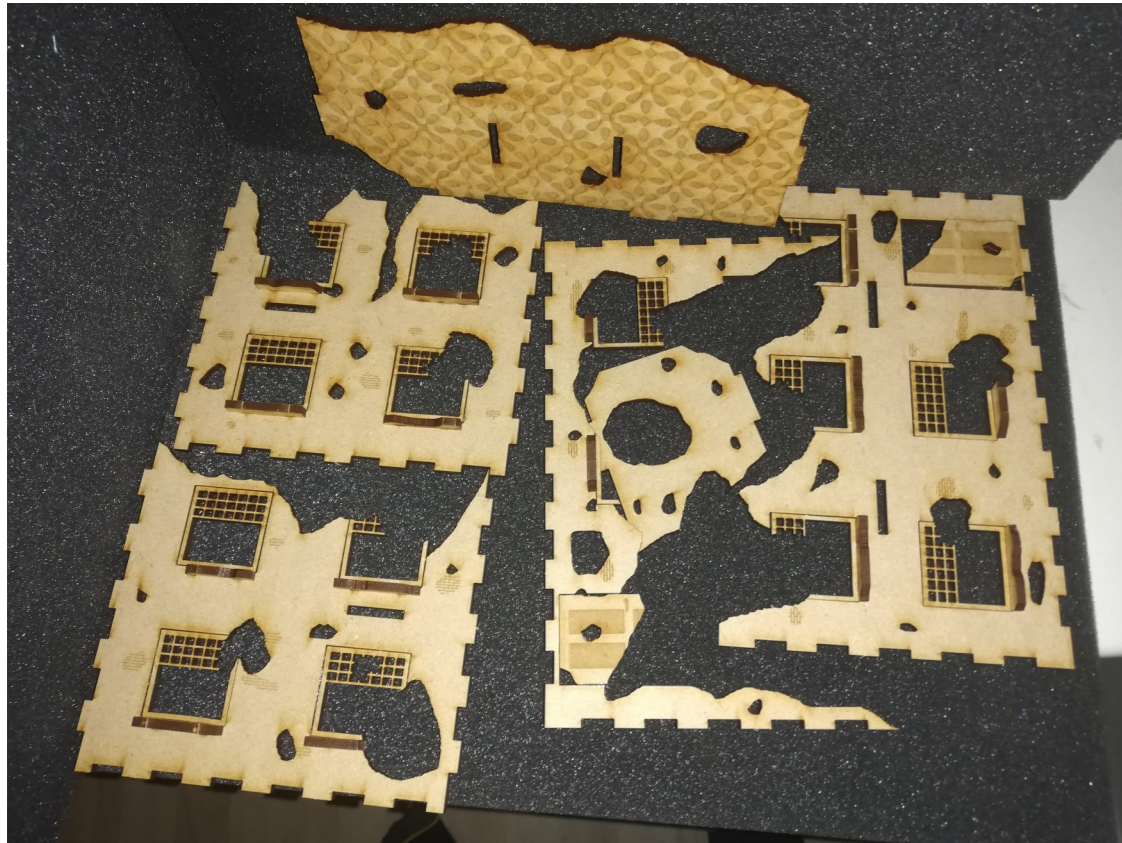
2: Glue doors, windows and window sills onto building walls, by following the instructions in PDF "Two-Storey Ruined Building Windows Placement".



Assembly Instructions for "Ruined Two-Storey Building"



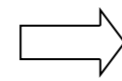
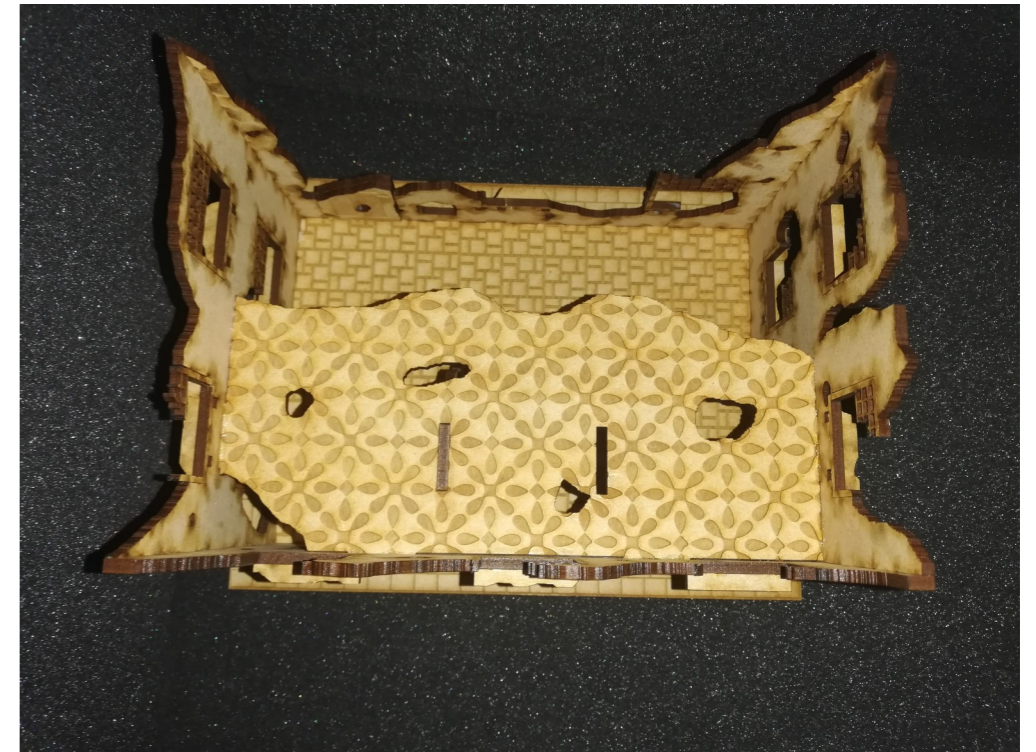
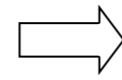
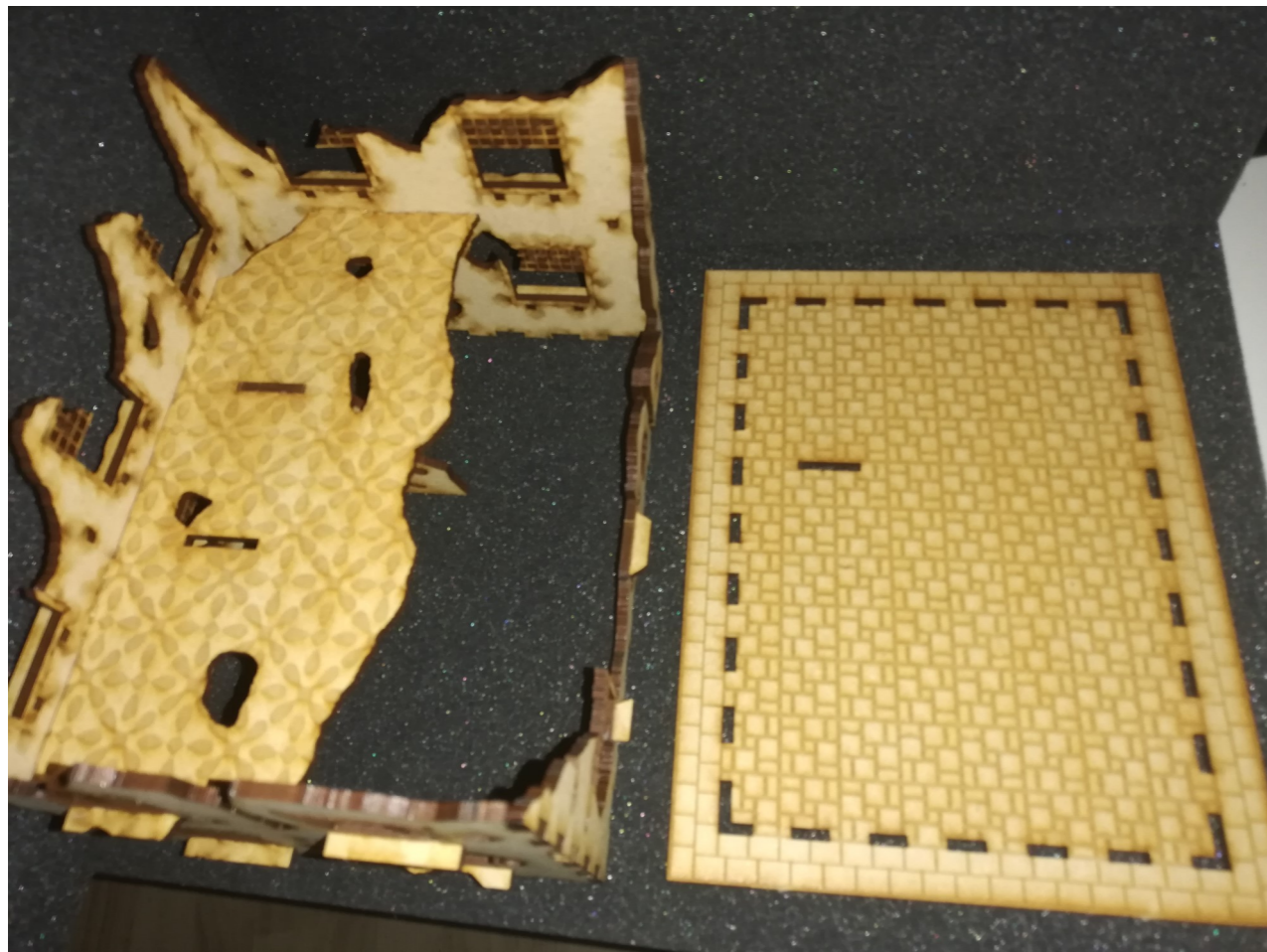
3: Glue together shown pieces. (A1,B1, C1, D1, F1 and H1)



Assembly Instructions for "Ruined Two-Storey Building"



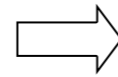
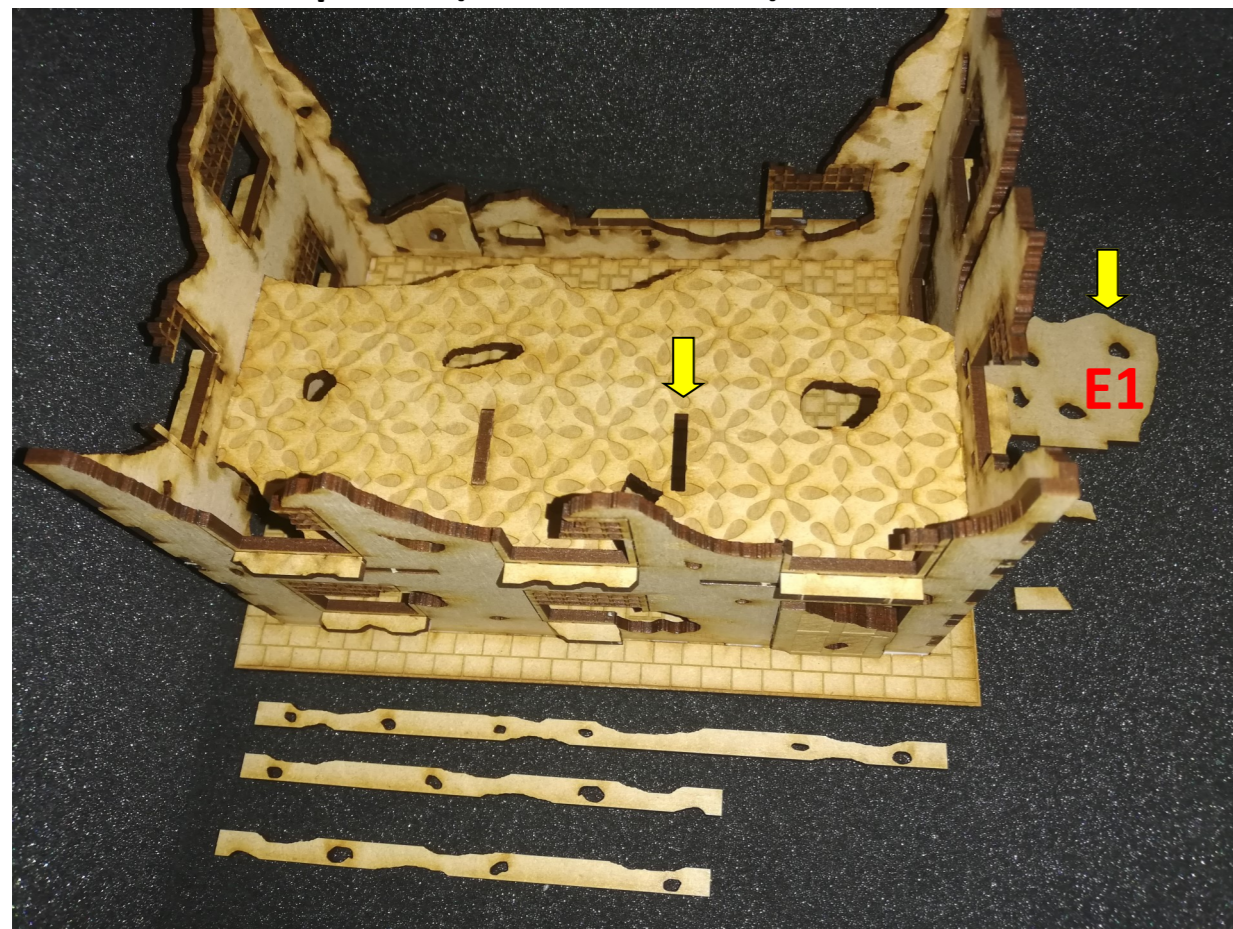
3: Glue assembled wall pieces onto ground floor piece (G1).



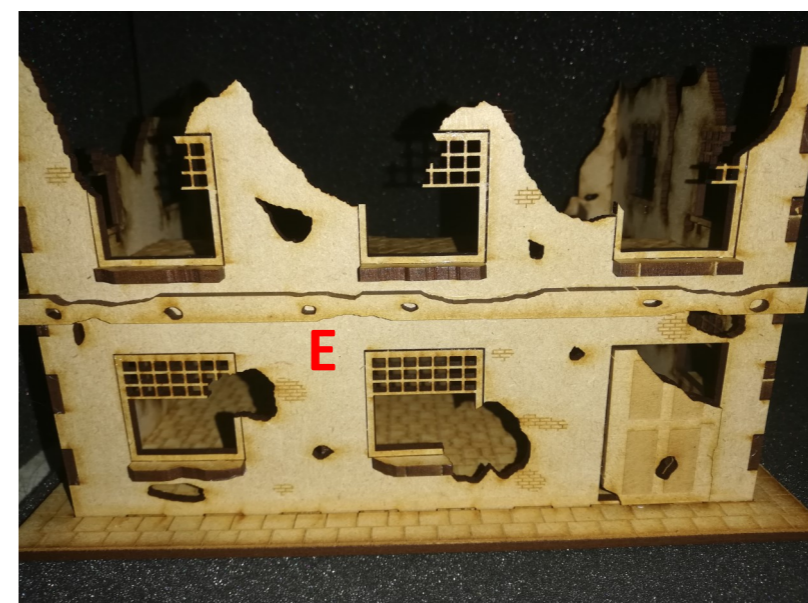
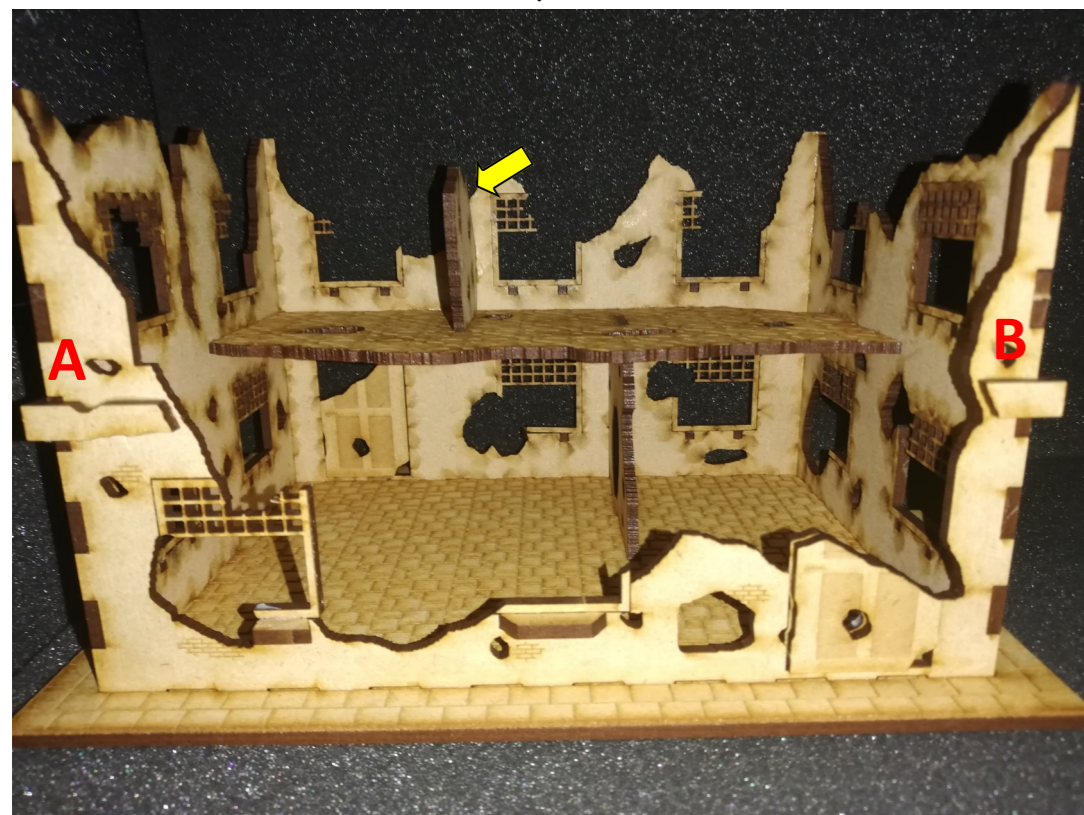
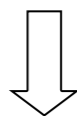
Assembly Instructions for "Ruined Two-Storey Building"



4: Glue shown pieces (A, B, C, D and E) onto the walls.



5: Glue last wall piece (E1) onto 1st floor (marked by yellow arrow)



Assembly Instructions for "Ruined Two-Storey Building"

