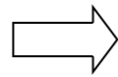


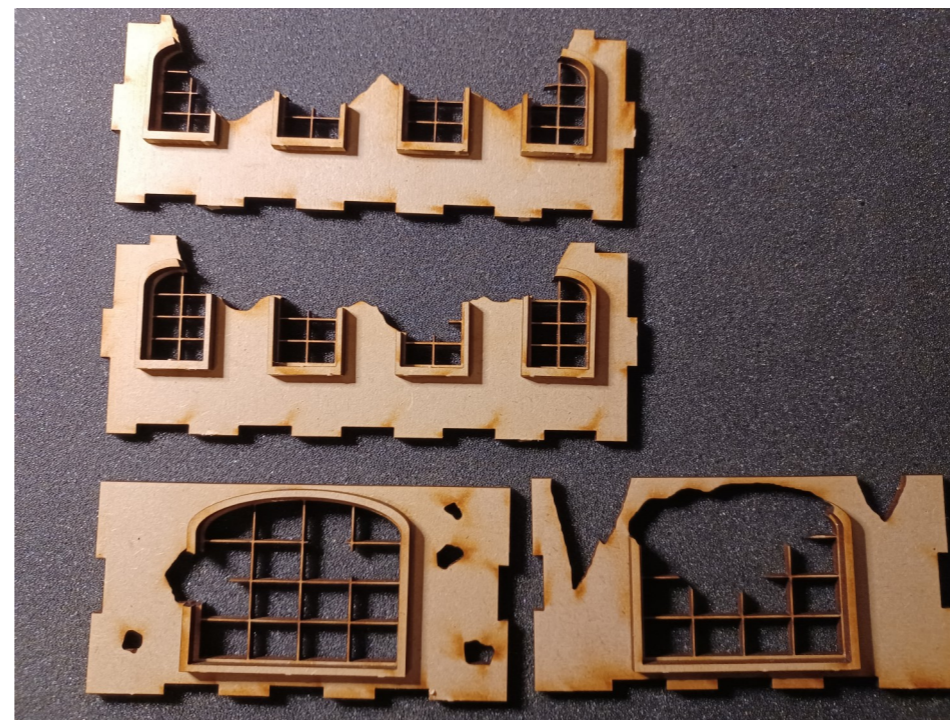
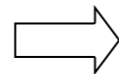
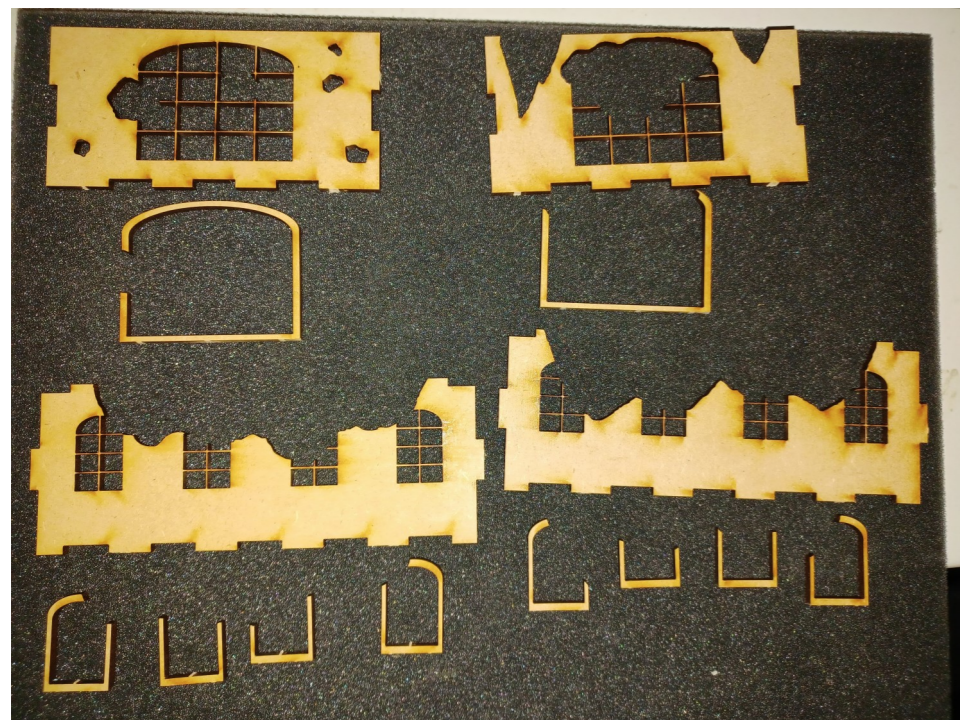
Assembly Instructions for "Ruined Two-Storey Factory"



1: Glue window sills onto building walls — ground floor, by following the instructions in PDF "Ruined Two-Storey Factory - windows sills placement".



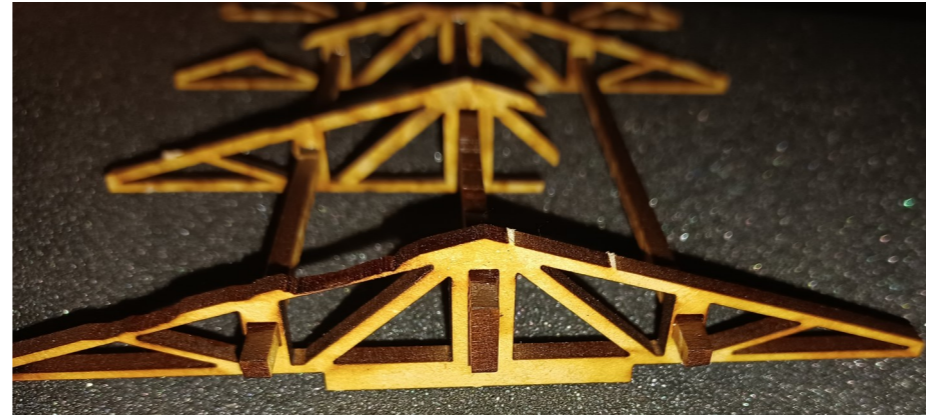
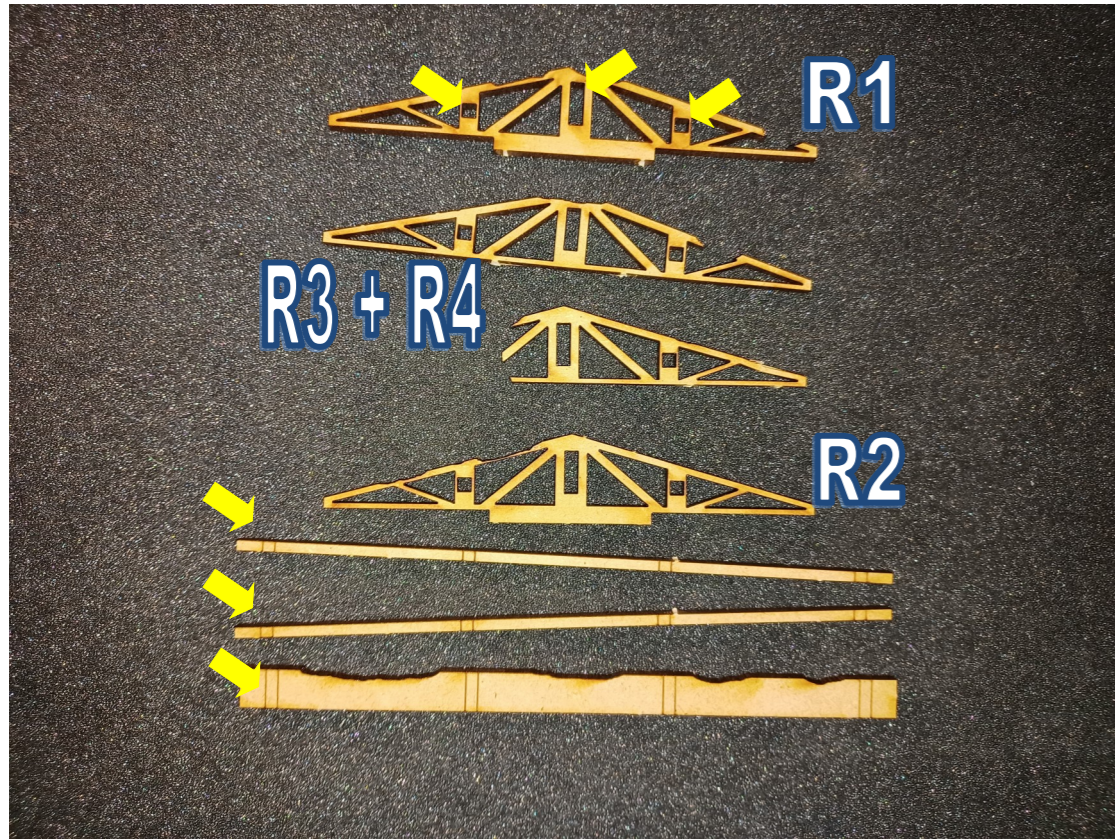
2: Glue window sills onto building walls — 1st floor, by following the instructions in PDF "Ruined Two-Storey Factory - windows sills placement".



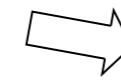
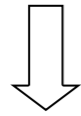
Assembly Instructions for "Ruined Two-Storey Factory"



3: Glue together shown pieces for the roofs "steel construction". Make sure to place R1 and R2 at the ends. Place R3 + R4 in the middle. Glue pieces together within the marked area (Yellow arrows).



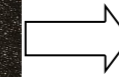
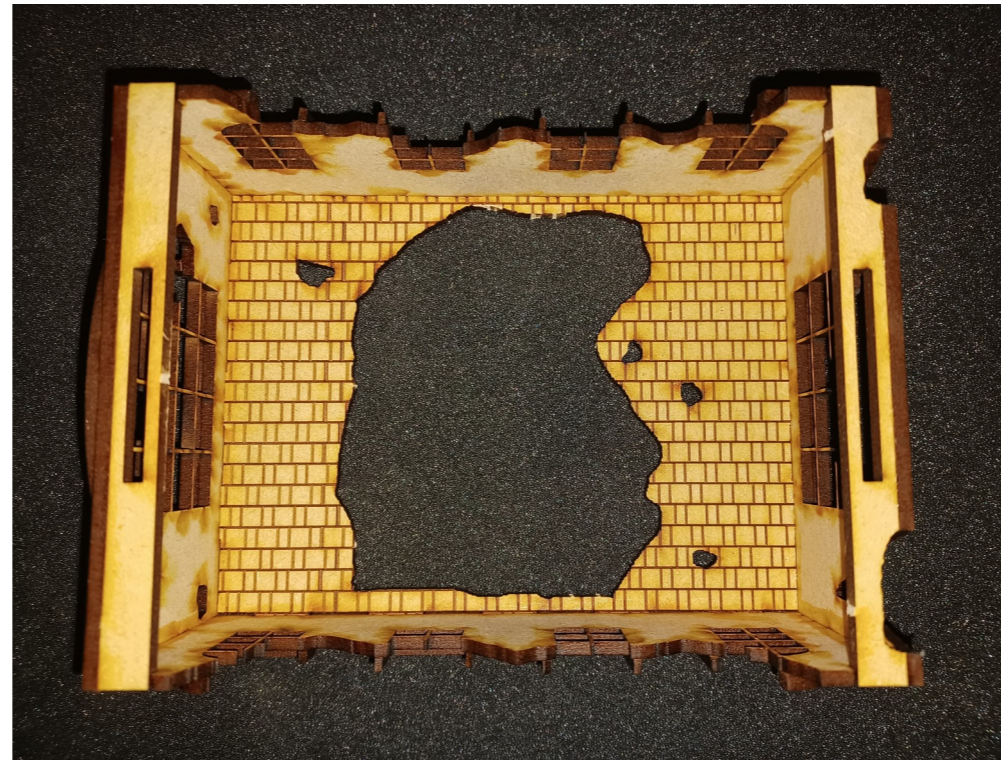
4: Glue the broken roof tiles onto the "steel construction". This can be done in several "patterns", and the choice is up to you—or you can leave them out entirely.



Assembly Instructions for "Ruined Two-Storey Factory"

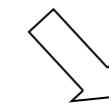
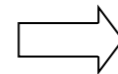
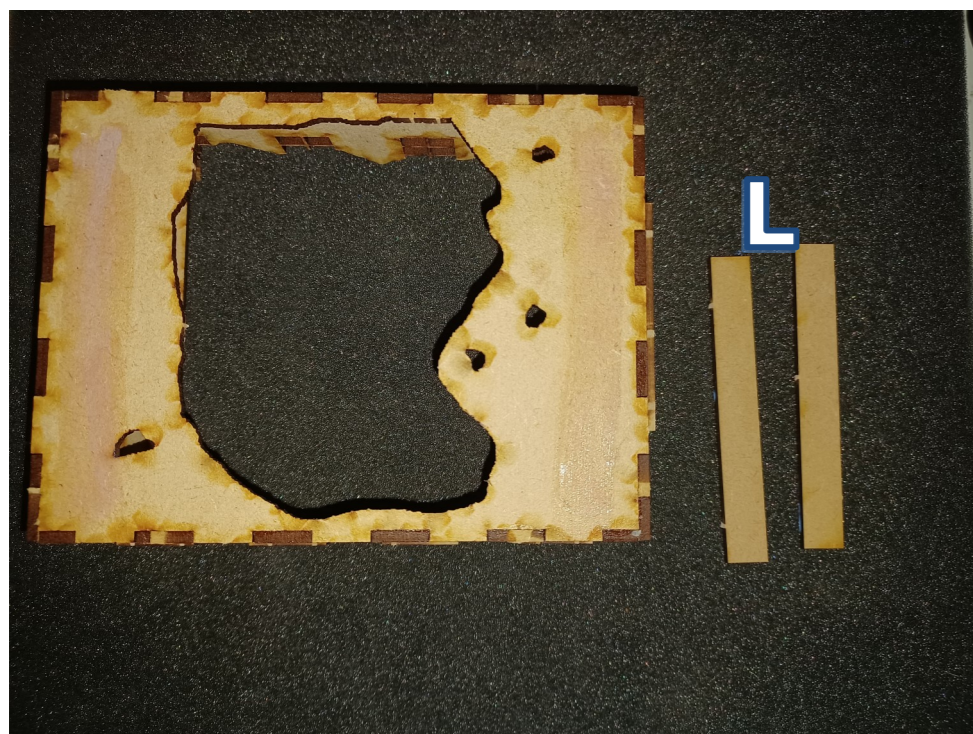


5: Glue shown pieces together to make the 1st floor of the building



You can use piece (K) to make sure the pieces (L) are placed correctly. DO NOT glue piece (K).

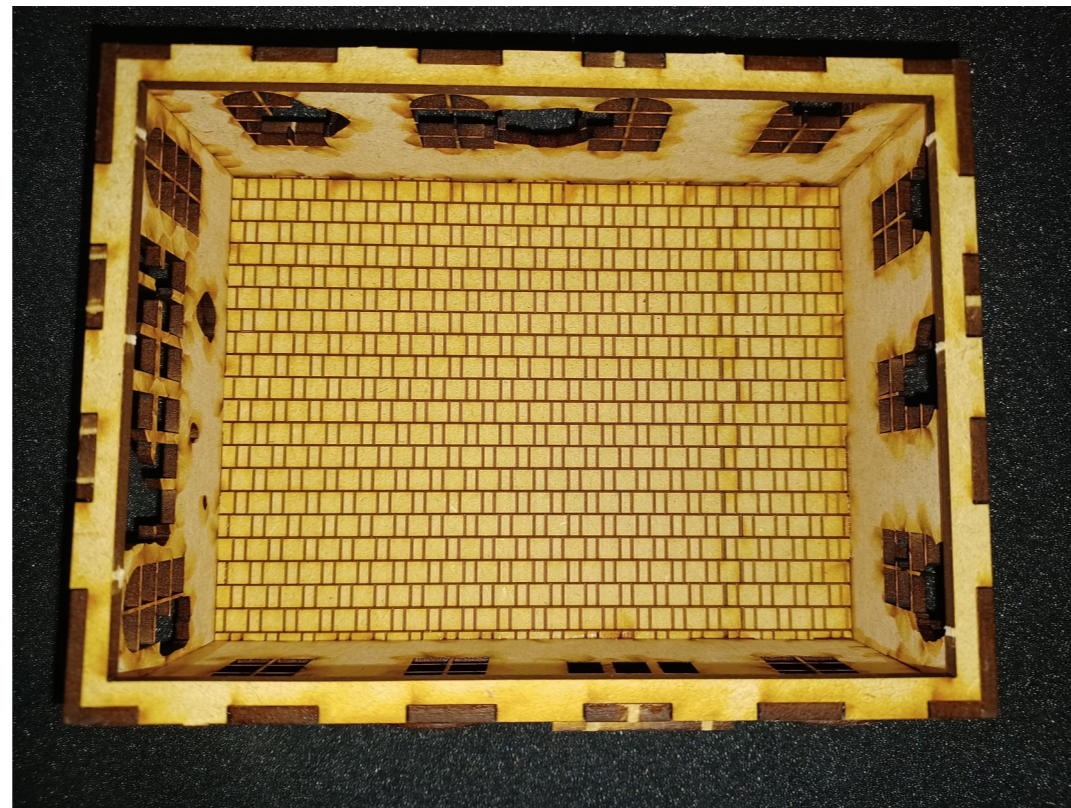
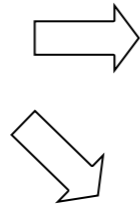
6: Glue shown pieces (L) onto the bottom of the 1st floor.



Assembly Instructions for "Ruined Two-Storey Factory"

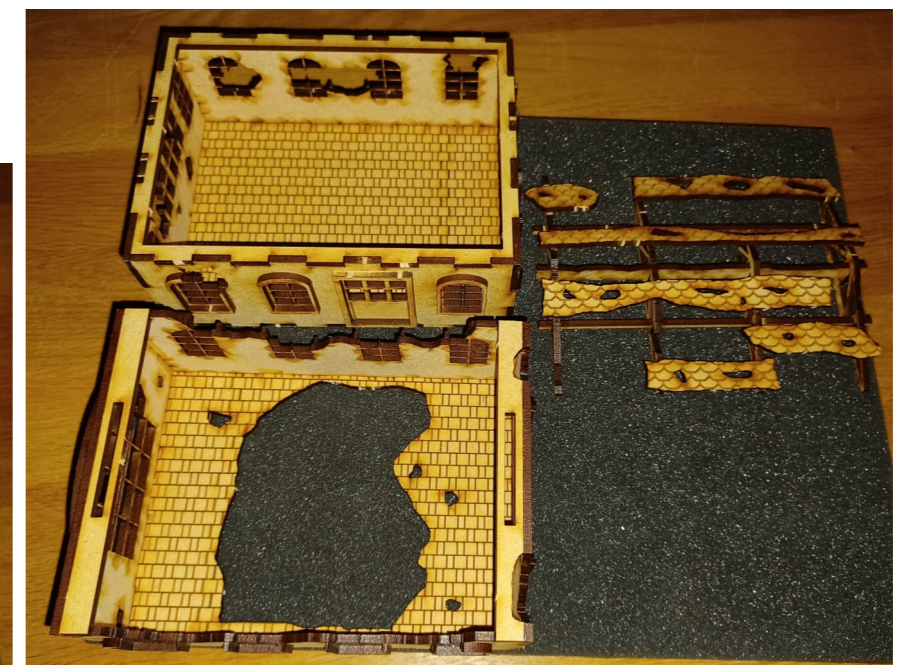
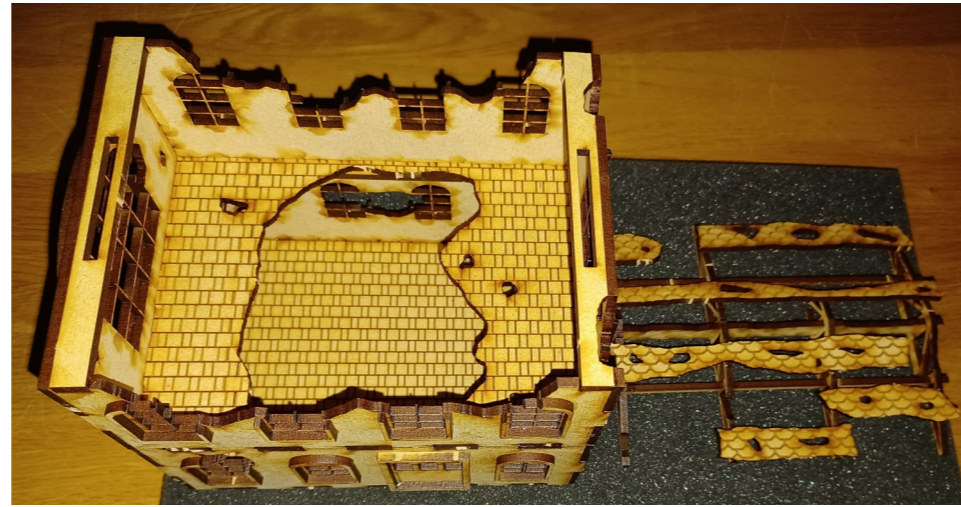


4: Glue shown pieces for the ground floor of the building.



Model is finished.

Roof and 1st floor is removable, to make it easier to place miniatures in building during game play.



Assembly Instructions for "Ruined Two-Storey Factory"

