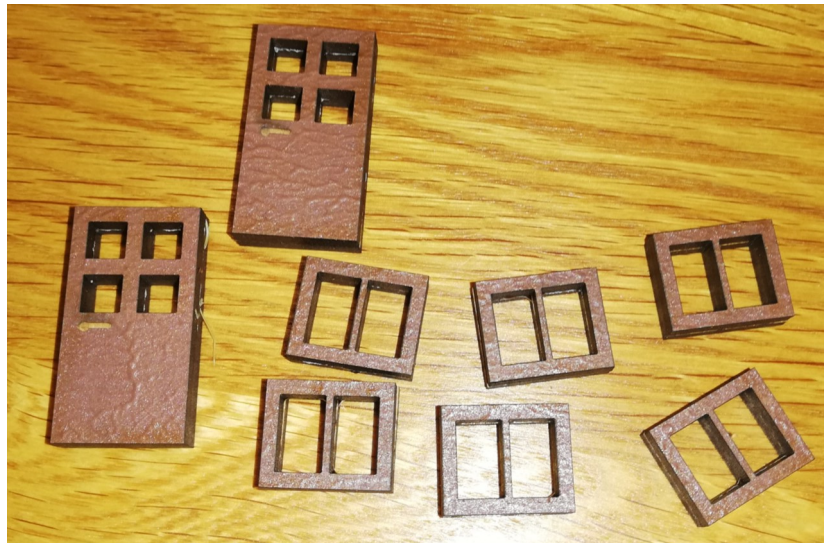
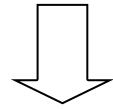


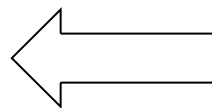
Assembly Instructions for "Mortar shelled house".



Step 1: Glue together windows and doors (into a sandwich).



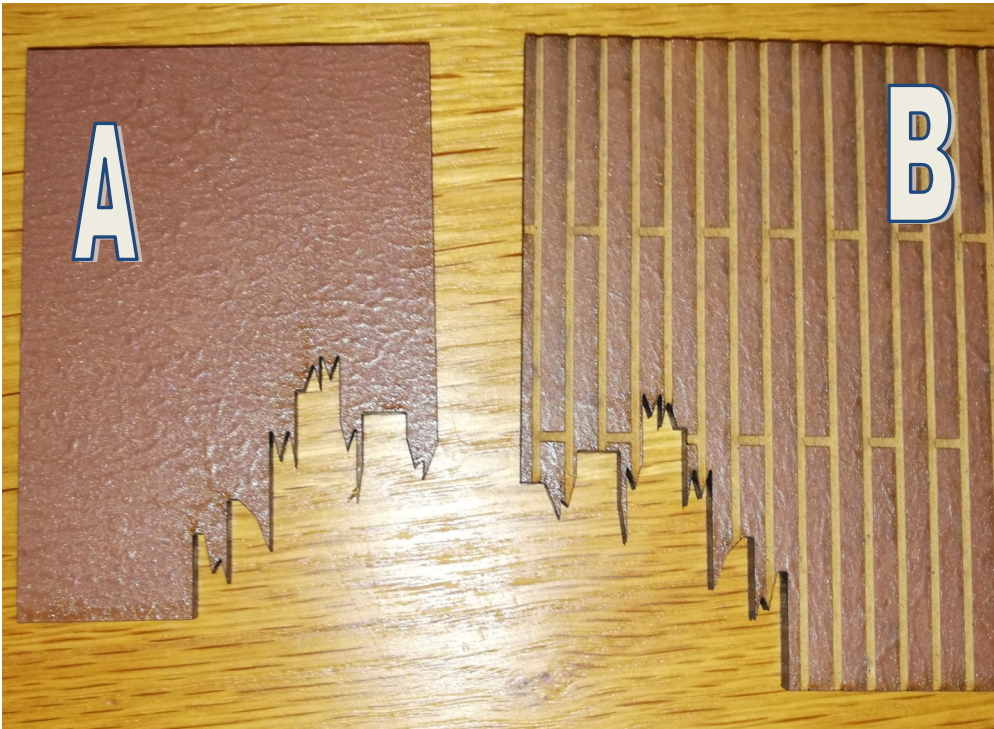
Step 2: Glue windows and doors into holes of the wall pieces. Windows and doors should be centered in wall pieces, making each window and door 1,5 mm thick on each side.



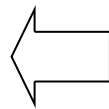
1

Assembly Instructions for "Mortar shelled house".

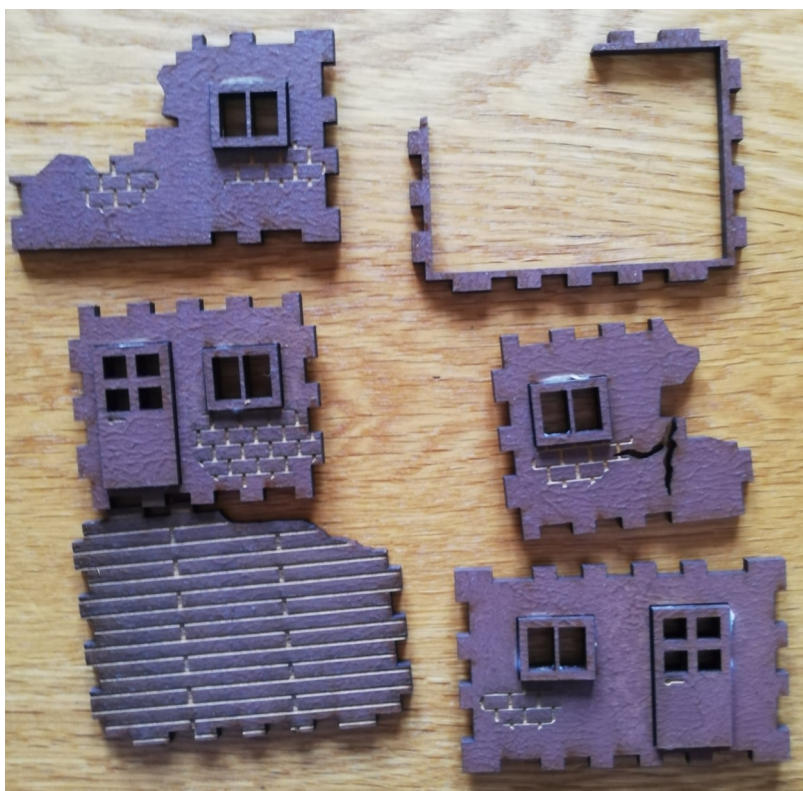
Step 3: Glue together the two pieces (A and B) for the roof floor. A should be centered on B.



Like this.



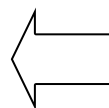
Assembly Instructions for "Mortar shelled house".



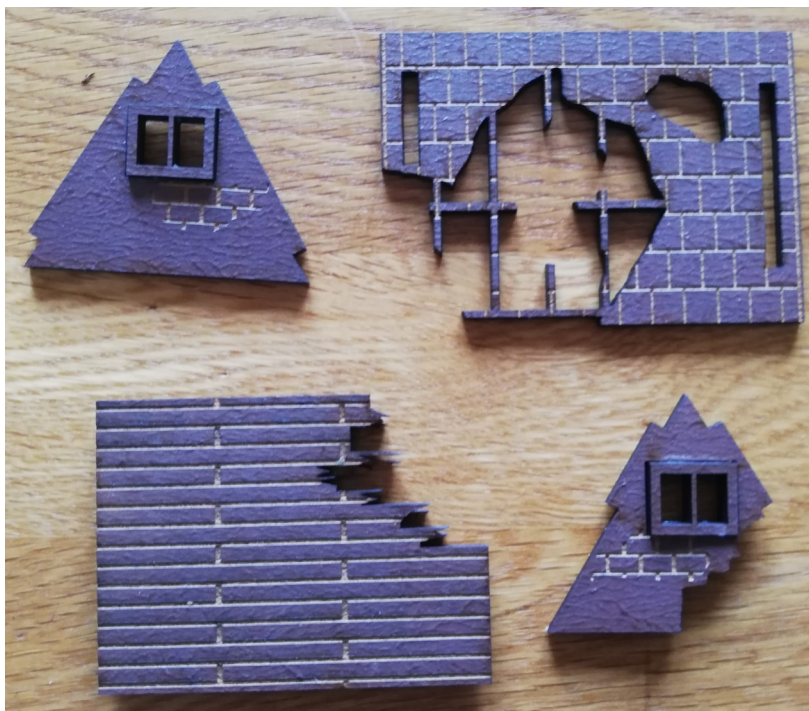
Step 4: Glue together wall pieces — groundfloor — with floor piece and top.



Like this.



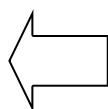
Assembly Instructions for "Mortar shelled house".



Step 5: Glue together wall pieces —1st floor— with floor piece - 1 st floor - and damaged roof piece . DO NOT glue undamaged roof piece. This can be removed during gameplay to make it easier to place miniatures.



Like this.



Assembly Instructions for "Mortar shelled house".



Step 6: Model is finished. 1st floor is removable from ground floor as well as aforementioned undamaged roof piece. Making placing of miniatures easier during gameplay.

