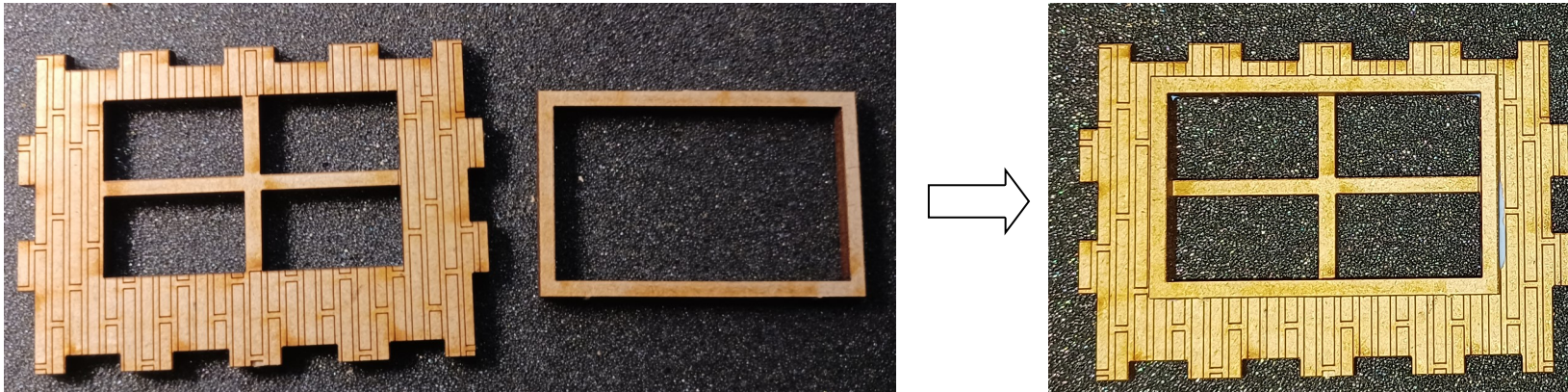


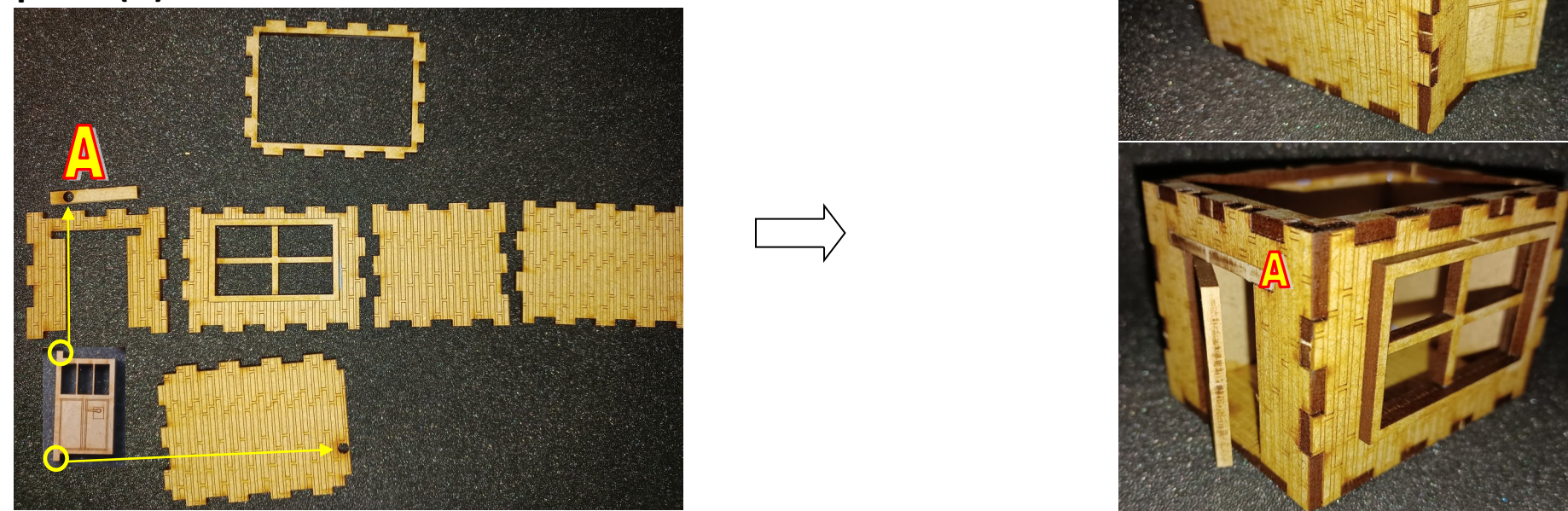
Assembly Instructions for "Freya and Würzburg Radars"



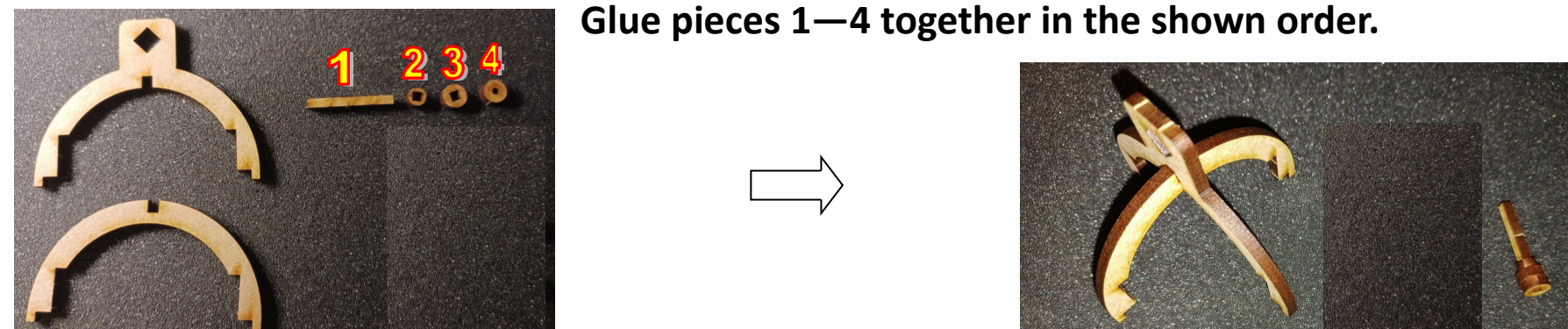
1: Glue windows onto wall pieces.



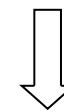
2: Glue together shown pieces for the Würzburg Radar (House).
Do NOT glue door. Taps on door goes into holes in floor and wall piece (A).



3: Glue together shown pieces for the Würzburg Radar.
Glue pieces 1—4 together in the shown order.



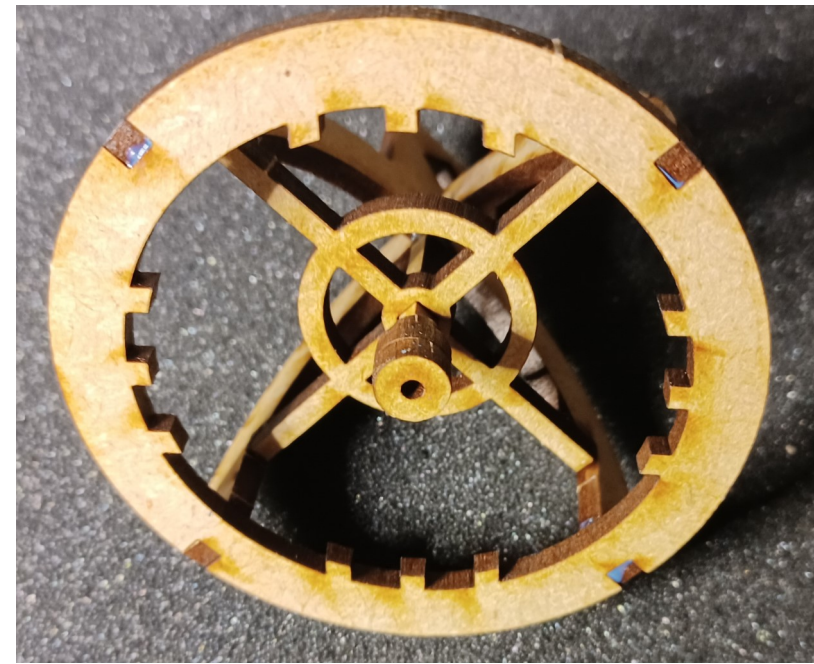
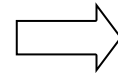
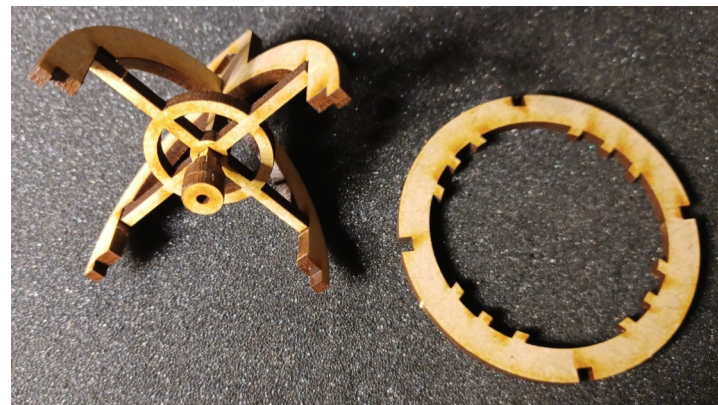
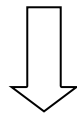
4: Glue together shown pieces for the roof.
Make sure pieces are centered.



Assembly Instructions for "Freya and Würzburg Radars"

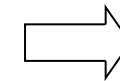
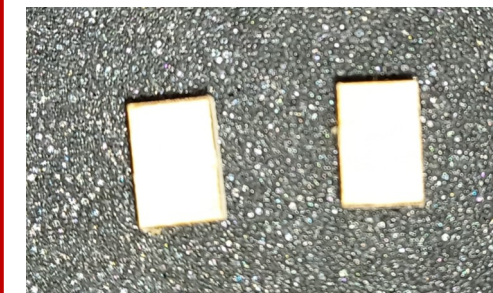


5: Glue together shown pieces for the radar.

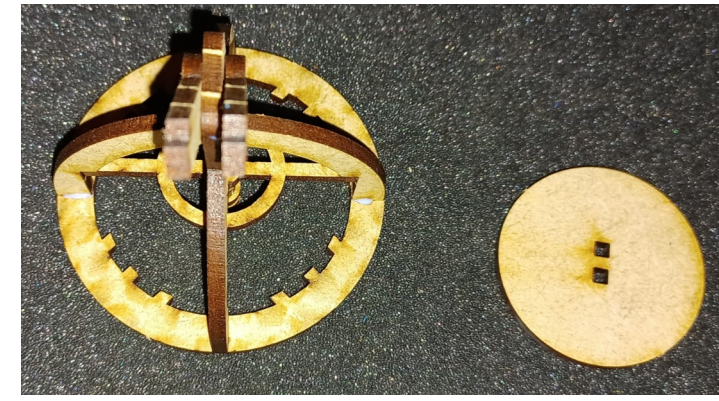
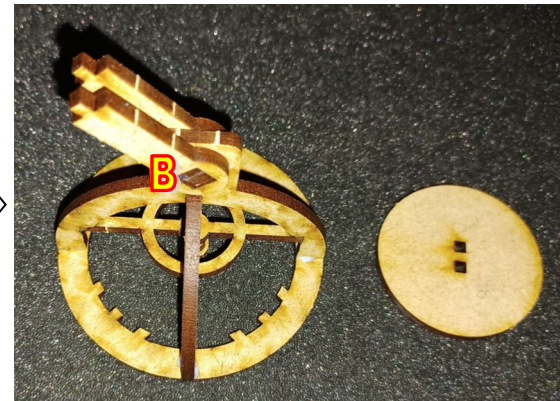


6: Glue together shown pieces . (Sandwich)

N.B. A little sanding might be necessary afterwards.



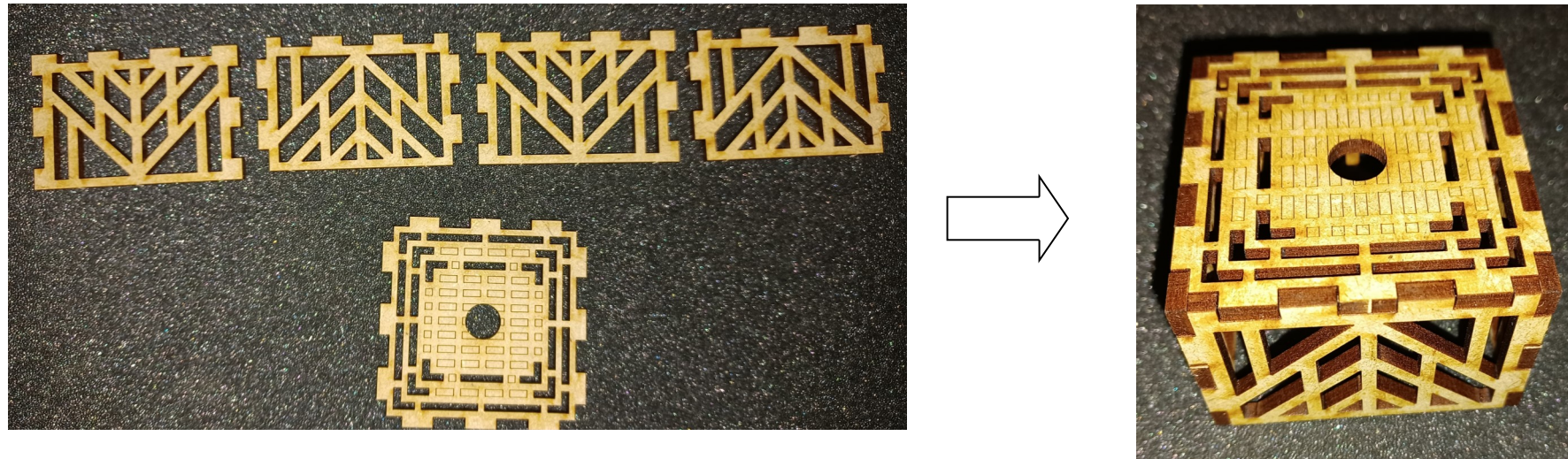
7: Glue pieces onto the radar, and then glue radar onto platform.



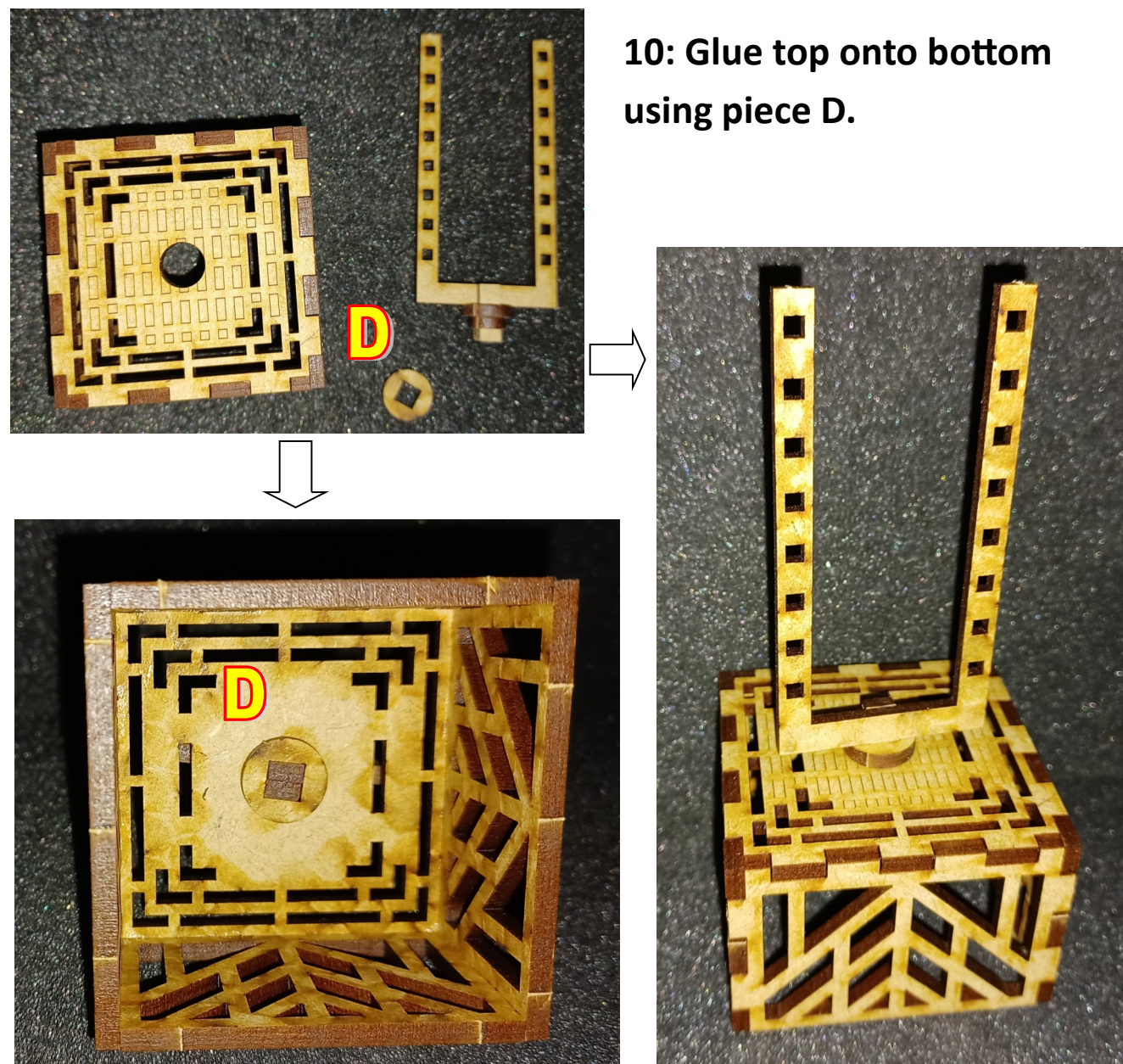
Assembly Instructions for "Freya and Würzburg Radars"



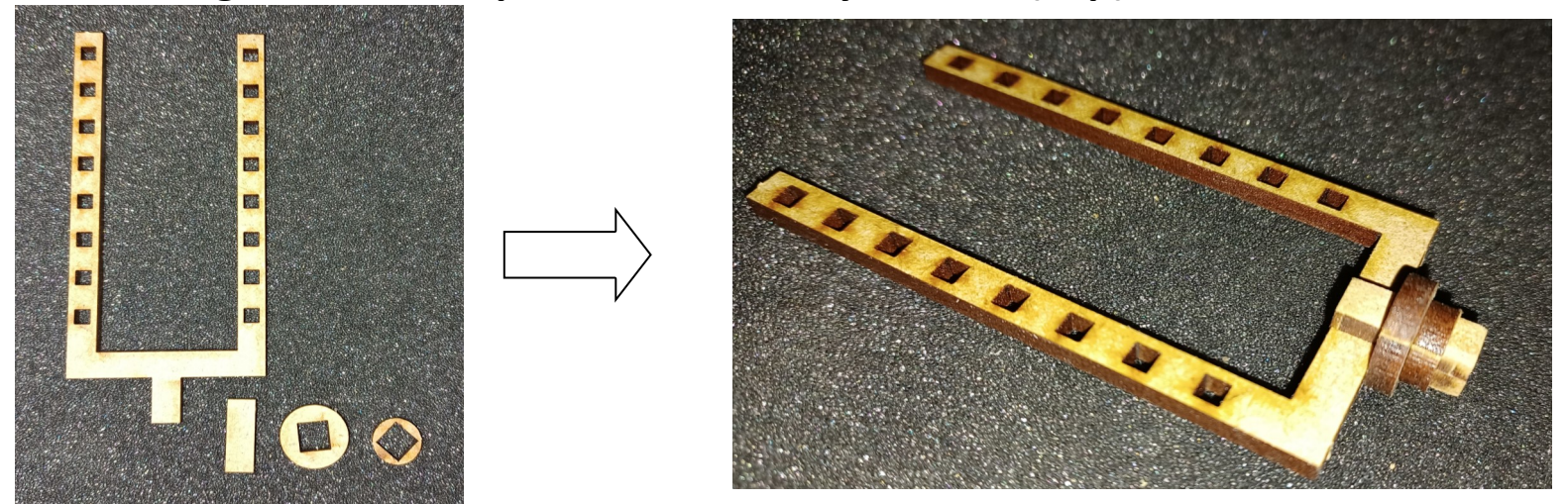
8: Glue together shown pieces for the Freya Radar. (Bottom)



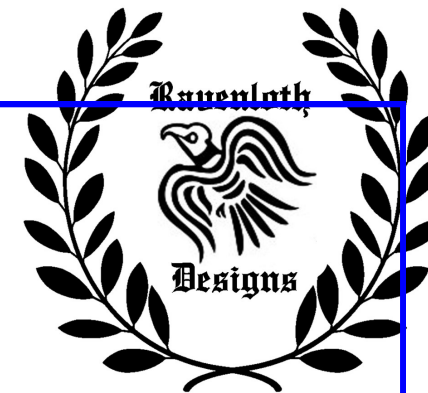
10: Glue top onto bottom using piece D.



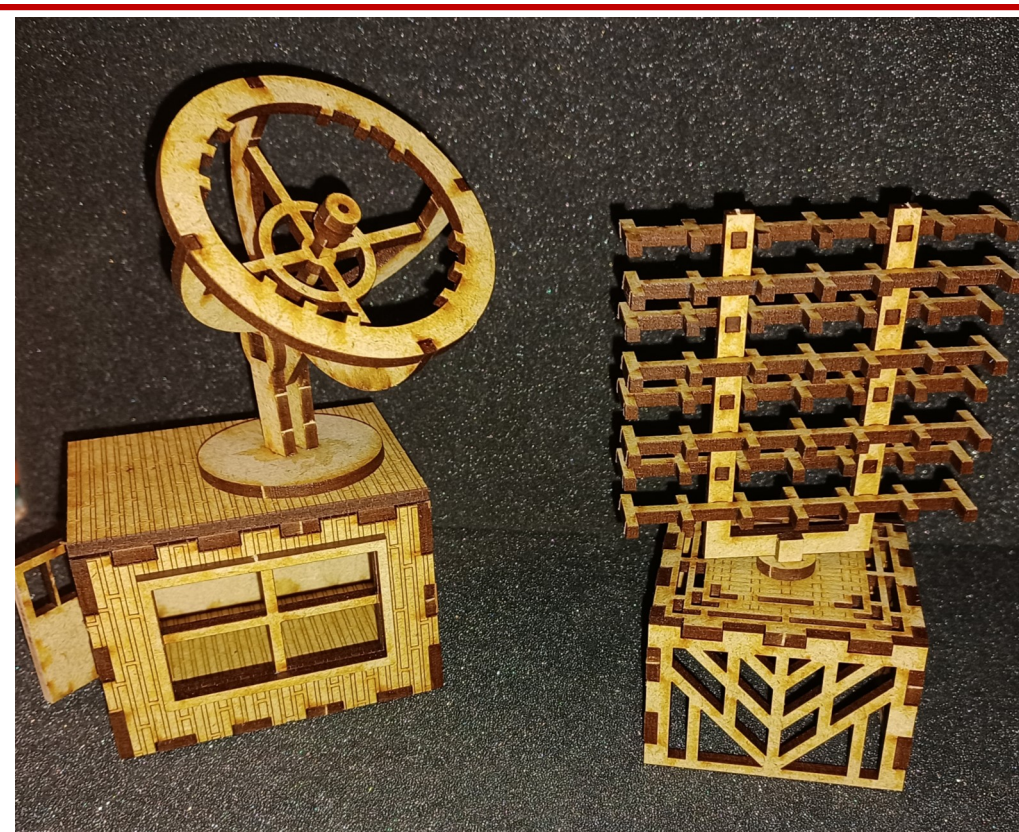
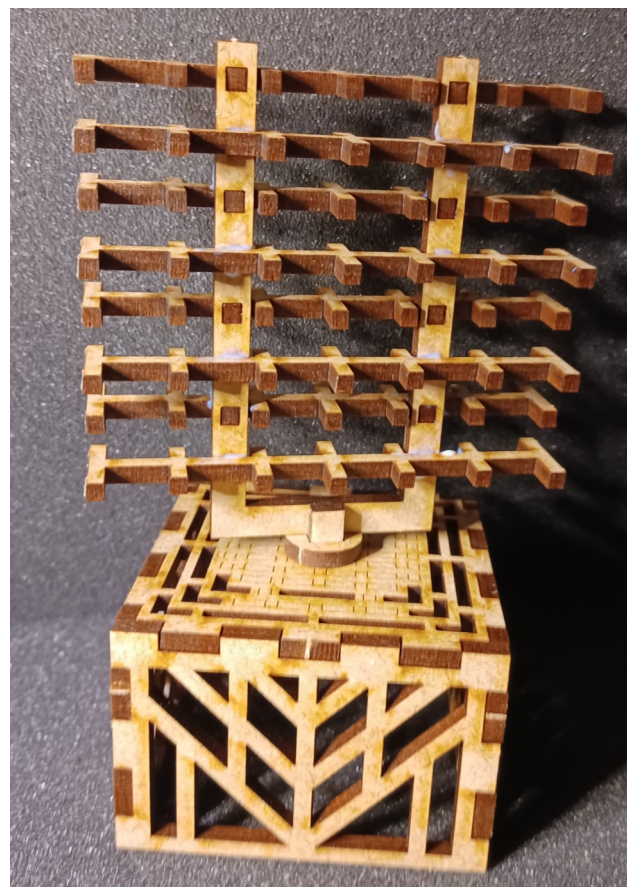
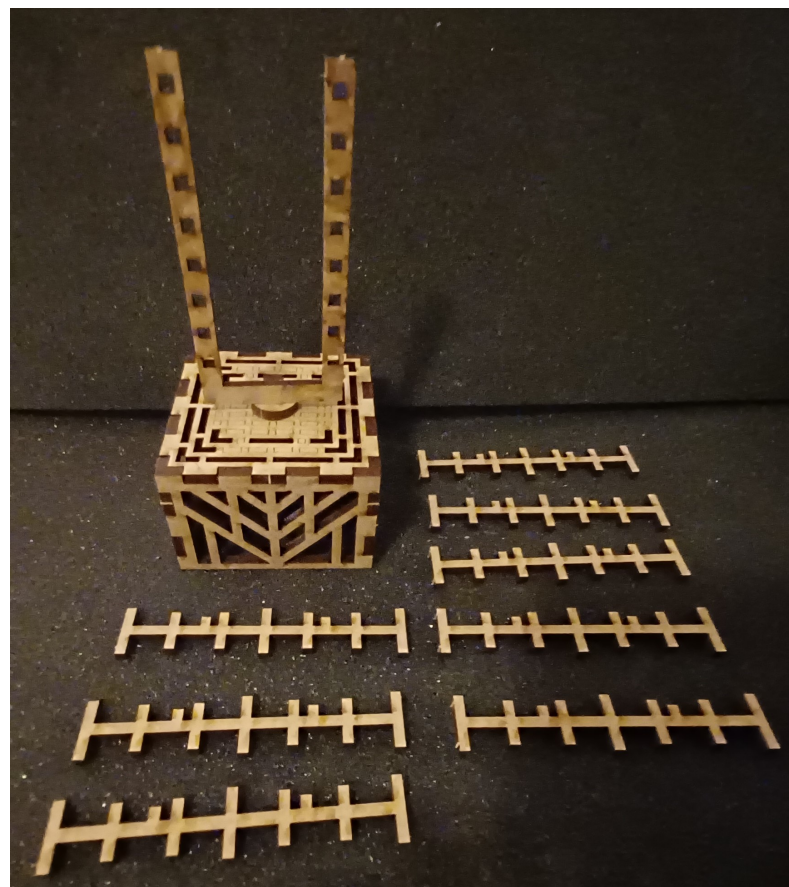
9: Glue together shown pieces for the Freya Radar. (Top).



Assembly Instructions for "Freya and Würzburg Radars"



11: Glue shown pieces onto the radar. Switch side from top to bottom with each part.



Historical facts: Freya and Würzburg Radars.

The German low-UHF band **Würzburg** radar was the primary ground-based gun laying radar for both the Luftwaffe and the Wehrmacht.

Freya was an early warning radar deployed by Germany during World War II. It was named after the Norse goddess Freya.

Freya was often used in concert with the primary gun laying radar **Würzburg**; the **Freya** finding targets at long distances and then "handing them over" to the shorter-ranged **Würzburg** for tracking.