

'Journeys'

Walking the Dales and beyond – Explorations of Place in Painting, Print and Textile

Exhibition Catalogue

18 November -
7 December 2022

Free Entry

The Artisan Gallery
The Station
Richmond
North Yorkshire
DL10 4LD



Jane Claire Wilson



Russell Hughes



Rachel Morrell

Table Of Contents

Welcome to 'Journeys'	3
Introduction	4
Exhibition Details	5
Jane Claire Wilson	6
'Songlines I' by Jane Claire Wilson	8
'Songlines II' by Jane Claire Wilson	10
'Songlines III' by Jane Claire Wilson	11
Songlines Detail	12
'Songlines IV' by Jane Claire Wilson	13
'Songlines V' by Jane Claire Wilson	14
'Songlines VI' by Jane Claire Wilson	15
Songlines Video	16
'Quakers Way I' by Jane Claire Wilson	17
'Quakers Way II' by Jane Claire Wilson	18
'Quakers Way III' by Jane Claire Wilson	19
Rachel Morrell	20

Exhibition Catalogue

'Old Gang Mine Spoil' by Rachel Morrell 21

'Smelt Mill' by Rachel Morrell 22

'Industrial Remains' by Rachel Morrell 23

'Old Gang Beck' by Rachel Morrell 24

'Old Barns' by Rachel Morrell 25

'Fragment I' by Rachel Morrell 27

'Fragment II' by Rachel Morrell 28

'Fragment III' by Rachel Morrell 29

'Fragment IV' by Rachel Morrell 30

'Texture Fragment I' by Rachel Morrell 31

'Texture Fragment II' by Rachel Morrell 32

'Trods I & II' by Rachel Morrell 33

'Small Textile Fragment I' by Rachel Morrell 34

'Small Textile Fragment II' by Rachel Morrell 35

Russell Hughes 36

'Variations IV' by Russell Hughes 37

'Variations' Series - Handmade Collages 38

'Variations VI' by Russell Hughes 40

Exhibition Catalogue

'Variations VI' by Russell Hughes	41
'Variations VII (Forms)' by Russell Hughes	42
'Variations VIII (Forms)' by Russell Hughes	43
'Variations VIII (Forms)' by Russell Hughes	45
'Variations IX (Contours)' by Russell Hughes	46
'Variations IX (Contours)' by Russell Hughes	47
'Variations X' by Russell Hughes	48
'Variations XI' by Russell Hughes	49
'Variations XII' by Russell Hughes	51
'Variations XIII' by Russell Hughes	52
'Variations' A4 Digital Prints by Russell Hughes	54

Welcome to 'Journeys'



Sorry about the background noise - it's a busy place!

Introduction

'Journeys'

WALKING THE DALES AND BEYOND – EXPLORATIONS OF PLACE IN PAINTING, PRINT AND TEXTILE

This exhibition of contemporary art brings together three artists whose practices explore ideas of place. Whilst their inspiration is similar, their subject matter, approach, working practice and media are very different.

Jane Claire Wilson is a textile artist and painter, inspired by people, places and their stories. Her 'Songlines' series of stitched textile work is inspired by recent travels in Australia – the lines, shapes, and colours of the Sydney Opera House and its architectural drawings are reimagined as extensions of the songlines criss-crossing the land in Aboriginal culture.

Rachel Morrell is an artist wanderer, whose abstract paintings are inspired by the landscape, derelict buildings and geology of the Yorkshire Dales. Her work 'Fragmentation' is inspired by walking through the derelict lead mining industry in Swaledale. The paintings depict the greys of the crumbling buildings and spoil heaps, the rusting machinery and the shot of lead.

Russell Hughes' abstract printmaking is inspired by observations of place and collecting data to record his own presence and experience. The abstract language of colour, shape and pattern in his 'Variations' series of prints emerges from GPS data mapping his walks in Richmond and from observation of the natural features along the River Swale.

Exhibition Details

'JOURNEYS'

WALKING THE DALES AND BEYOND – EXPLORATIONS OF PLACE IN PAINTING, PRINT AND TEXTILE

An exhibition of contemporary art by Russell Hughes, Rachel Morrell, Jane Claire Wilson

Exhibition Details:

Artisan Gallery

The Station

Station Yard, Richmond, North Yorkshire, DL10 4LD

November 18th - December 7th 2022



Jane Claire Wilson



Jane creates artwork to share stories about places and people. She has walking at the heart of her practice; researching the social context of places she explores. In response to her findings Jane creates textile sculptures, experimental textiles pieces and small abstract paintings. Each piece inspired by the visual language of the places she visited and the conversations with the people she met along the way.

Since graduating from Leeds Arts University in 2020 with an MA in Creative Practice Jane has established herself as a local artist. She has exhibited in local galleries and pop up shops; been selected as a member of York Textile Artists and North Yorkshire Open Studios and in 2022 Jane won The SCAF Emerging Artist Award for Yorkshire Artists. Jane works as a community based artist; delivering workshops throughout North Yorkshire.

Songlines

This series of 6 stitched textile pieces is inspired by recent travels in Australia – the lines and shapes of the Sydney Opera House and its architectural drawings are reimagined as extensions of the Songlines criss-crossing the land in Aboriginal culture. The mapping of the landscape mirroring the star constellations, in particular the Southern Cross. The colour palette is inspired by the colours of the land; the rocks, sand and bleached landscape of the desert interior. The artwork is built up of layers of painted canvas and threads, woven and wrapped threads and hand stitched maps.

Quakers Way

This series of 3 stitched artworks was created in response to walks along The Quakers Way on The North Yorkshire Moors. In this work Jane is exploring the theme of pilgrimages and the idea of following in the footsteps of others in order to find your own way in life. The colour palette is inspired by the yellow stone trods, the stormy blue skies and the iron ore seeping through the ground. The lines reflect the gridlines, contours and paths marked on the old maps she followed. The texture responds to the aging trods which are partially hidden under the ground. The hollowed out shapes reflect the hollows on top of eroding way markers where people left money for travellers and pilgrims. The artwork is built up of layers of painted calico, heat distressed lutrador and freehand machine embroidery.

Contact Jane on Instagram [@janeclairewilson](https://www.instagram.com/janeclairewilson) or by email at janeclairewilson@hotmail.com.

'Songlines I' by Jane Claire Wilson



Jane Claire Wilson

Songlines I

Acrylics, Hand embroidery

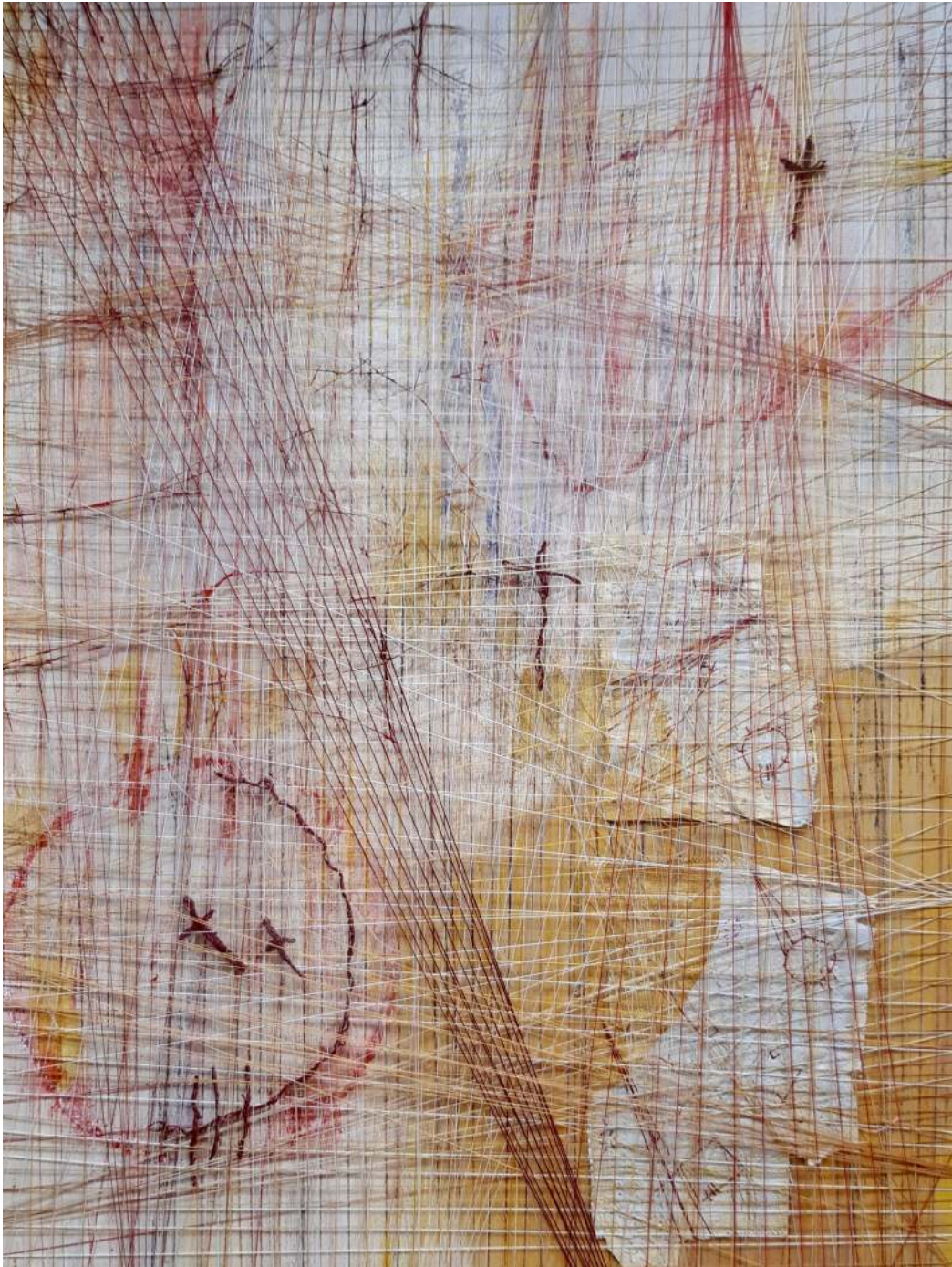
Framed

£120.

Exhibition Catalogue



'Songlines II' by Jane Claire Wilson



Jane Claire Wilson

Songlines II

Acrylics, Hand embroidery

Framed

£120.

'Songlines III' by Jane Claire Wilson



Jane Claire Wilson

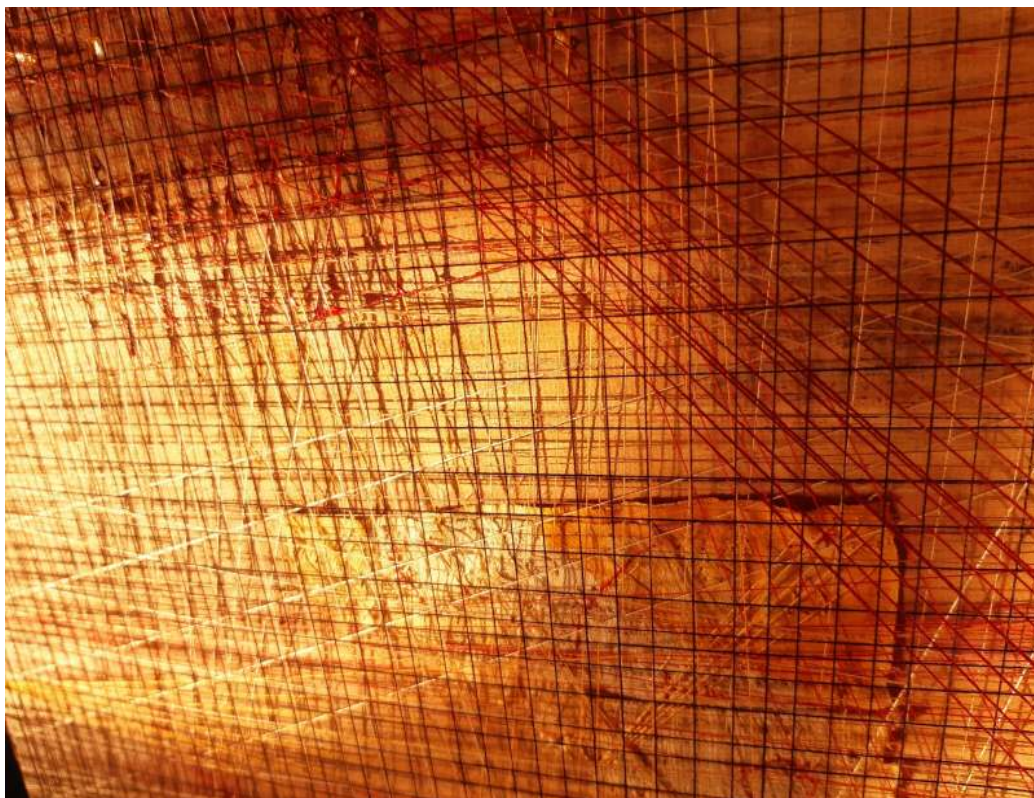
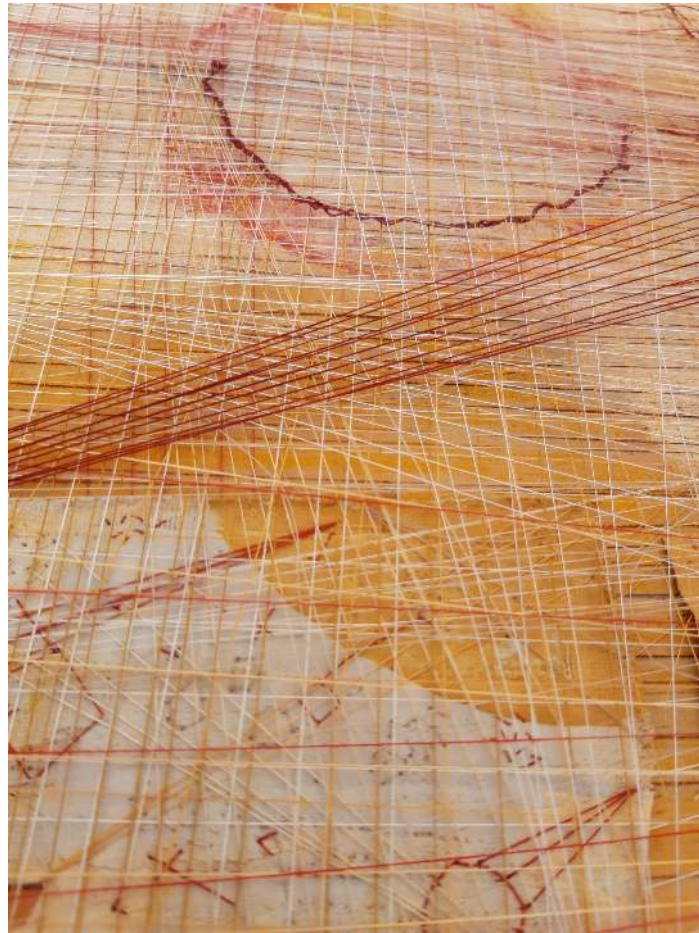
Songlines III

Acrylics, Hand embroidery

Framed

£120.

Songlines Detail



'Songlines IV' by Jane Claire Wilson



Jane Claire Wilson

Songlines IV

Acrylics, Hand embroidery

Framed

£120.

'Songlines V' by Jane Claire Wilson



Jane Claire Wilson

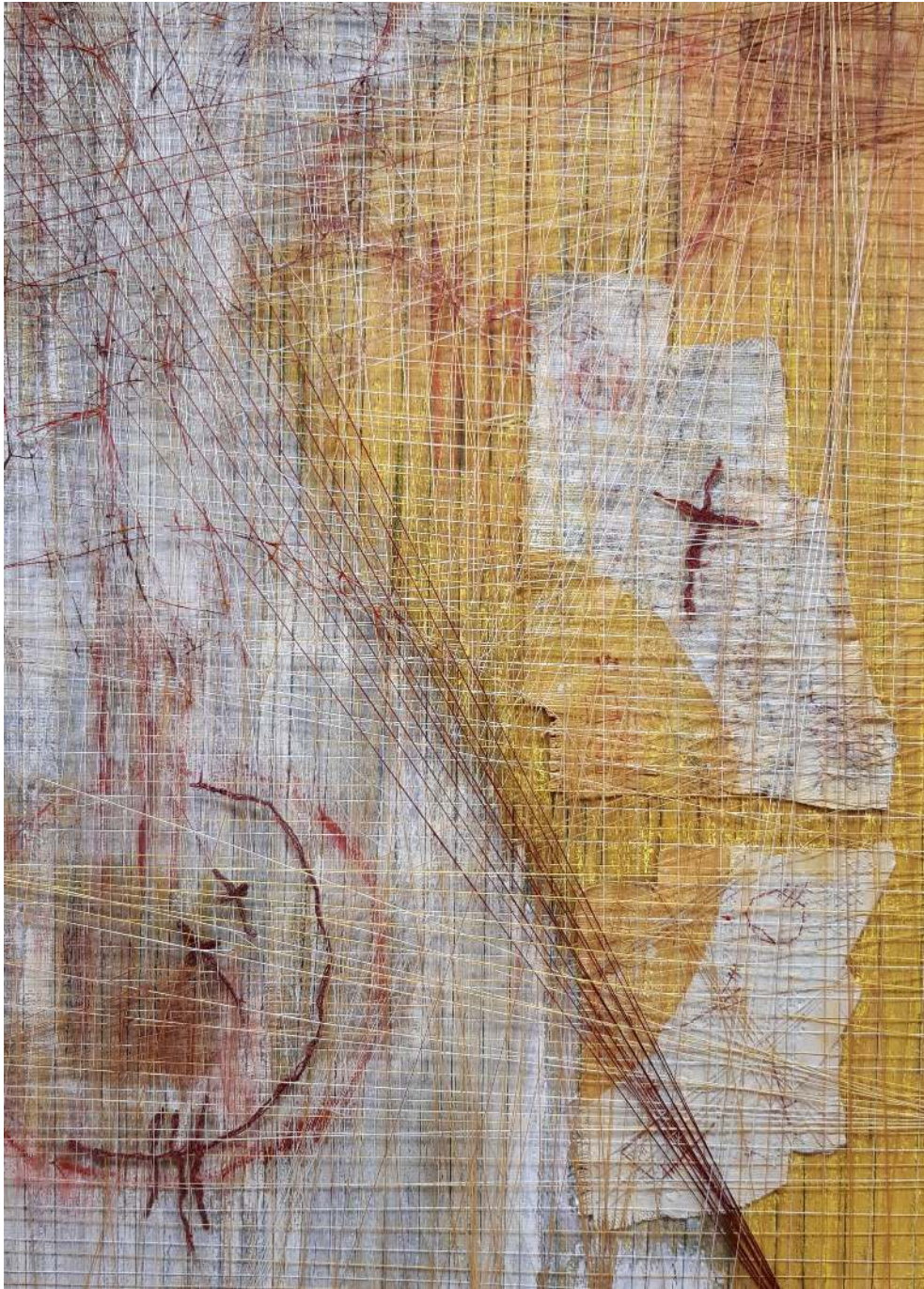
Songlines V

Acrylics, Hand embroidery

Framed

£120.

'Songlines VI' by Jane Claire Wilson



Jane Claire Wilson

Songlines VI

Acrylics, Hand embroidery

Framed

£120.

Songlines Video



'Quakers Way I' by Jane Claire Wilson



Jane Claire Wilson

Quakers Way I

Acrylics, Freehand machine embroidery

Framed

£110.

'Quakers Way II' by Jane Claire Wilson



Jane Claire Wilson

Quakers Way II

Acrylics, Freehand machine embroidery

Framed

£110.

'Quakers Way III' by Jane Claire Wilson



Jane Claire Wilson

Quakers Way III

Acrylics, Freehand machine embroidery

Framed

£110.

Rachel Morrell



Rachel Morrell is an artist wanderer, whose abstract paintings are inspired by the landscape, derelict buildings and geology of the Yorkshire Dales. Her work 'Fragmentation' is inspired by walking through the derelict lead mining industry in Swaledale. The paintings depict the greys of the crumbling buildings and spoil heaps, the rusting machinery and the shot of lead.

Contact Rachel at:

www.rachelmorrellart.co.uk

Instagram [@rachelmorrellart](https://www.instagram.com/rachelmorrellart)

'Old Gang Mine Spoil' by Rachel Morrell



Rachel Morrell

'Old Gang Mine Spoil'

Oil

Framed

£220

'Smelt Mill' by Rachel Morrell



Rachel Morrell

'Smelt Mill'

Oil

Framed

£300

'Industrial Remains' by Rachel Morrell



Rachel Morrell

'Industrial Remains'

Acrylic

Framed

£250

'Old Gang Beck' by Rachel Morrell



Rachel Morrell

'Old Gang Beck'

Oil

Framed

£200

'Old Barns' by Rachel Morrell



Rachel Morrell

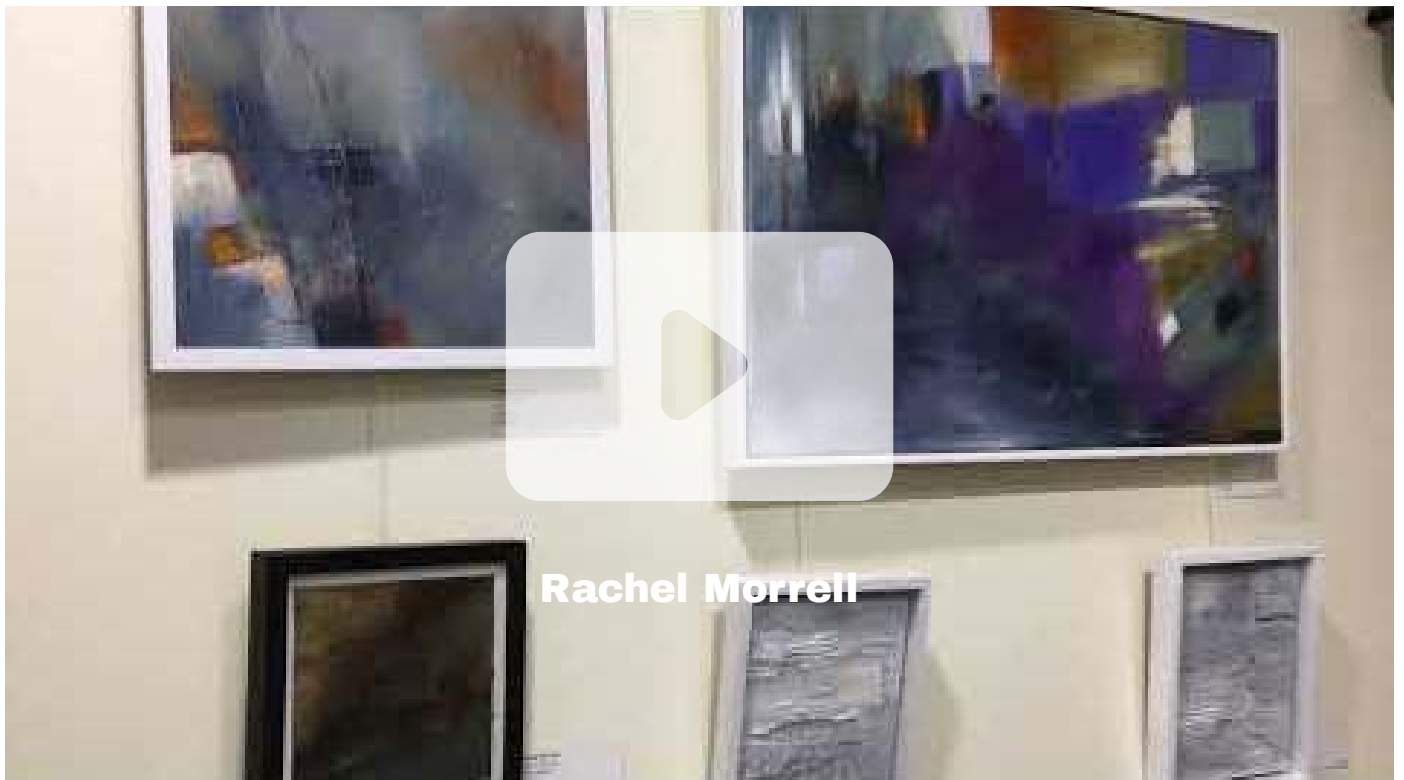
'Old Barns'

Mixed Media

Framed

£250

Exhibition Catalogue



'Fragment I' by Rachel Morrell



Rachel Morrell

'Fragment I'

Oil

Framed

£120

'Fragment II' by Rachel Morrell



Rachel Morrell

'Fragment II'

Oil

Framed

£120

'Fragment III' by Rachel Morrell



Rachel Morrell

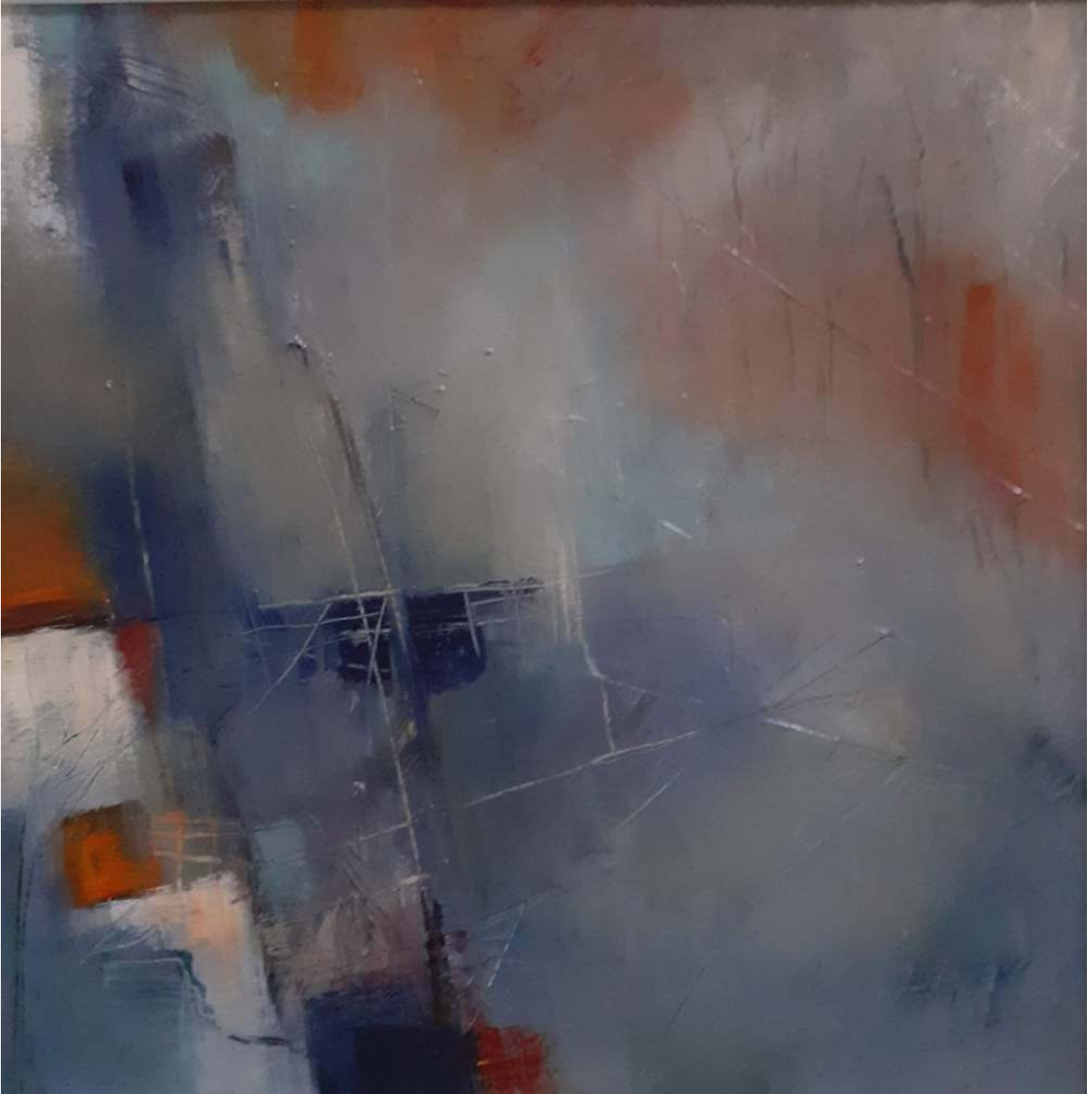
'Fragment III'

Oil

Framed

£120

'Fragment IV' by Rachel Morrell



Rachel Morrell

'Fragment IV'

Oil

Framed

£120

'Texture Fragment I' by Rachel Morrell



Rachel Morrell

'Texture Fragment I'

Mixed Media

Framed

£80

'Texture Fragment II' by Rachel Morrell



Rachel Morrell

'Texture Fragment II'

Mixed Media

Framed

£80

'Trods I & II' by Rachel Morrell



Rachel's textiles are inspired by a walk along the Quakers Way in Comondale, North York Moors with Jane Claire Wilson. The titles 'Trods' are the name given to the flagstones that still exist in places along the way.

Rachel Morrell

'Trods I & II'

Textiles

Framed

£120 each

'Small Textile Fragment I' by Rachel Morrell



Rachel Morrell

'Small Textile Fragment I'

Textiles

Framed

£30

'Small Textile Fragment II' by Rachel Morrell



Rachel Morrell

'Small Textile Fragment II'

Textiles

Framed

£30

Russell Hughes

Russell is an artist and printmaker whose work is inspired by observations of place and collecting data to record his own presence and experience.

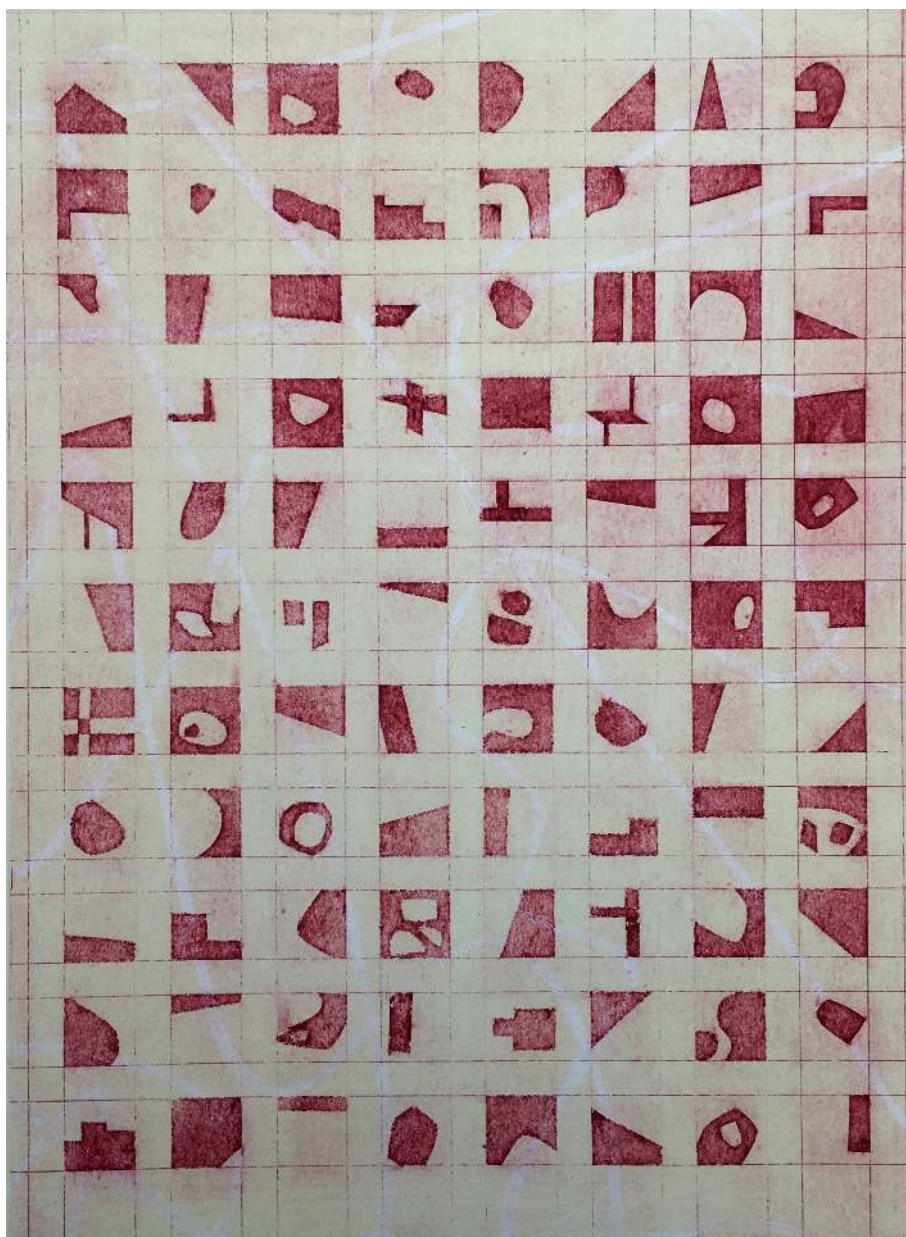
Russell graduated from Leeds Arts University with an MA in Creative Practice in 2018 and has exhibited his work in group exhibitions, print fairs and pop-up galleries around York and Leeds. He is a member of York Printmakers.. Russell will be participating in North Yorkshire Open Studios in 2023.

The abstract language of colour, shape and pattern in his latest 'Variations' series of handmade prints emerges from GPS data mapping his walks in Richmond and from observation of the natural features along the River Swale.

Russell can be contacted via his website www.russellhughesart.co.uk, email russellhughesart@gmail.com or instagram [@russellhughesart](https://www.instagram.com/russellhughesart).



'Variations IV' by Russell Hughes



Russell Hughes

'Variations IV'

Handmade print (Collagraph / Monoprint)

Edition 1/5

50x40cm

Framed £120

'Variations' Series - Handmade Collages

These unique handmade collages are inspired by walks around Richmond.

The overall composition and colour scheme is based on a visualisation of GPS data (specifically altitude data) collected while walking. The specific shapes and patterns in the 'tiles' are inspired by the natural features along the River Swale and the man-made features of Richmond town centre.

Each tile represents one altitude data point selected at regular intervals from the whole GPS data set. The data is grouped into 5 bands. The tiles have been cut from handmade collagraph prints.

The navy tiles represent the lower altitude section of the walk, along the river. The patterns in the prints are based on natural forms observed during this section of the walk. The maroon tiles represent the higher sections of the walk, through the town centre. The patterns in the tiles are inspired by the geometric shapes and patterns in the architecture of the town centre. The tiles with green gradient sections represent altitude data in between the lowest and highest bands, i.e. walking down to the river or up to the town.



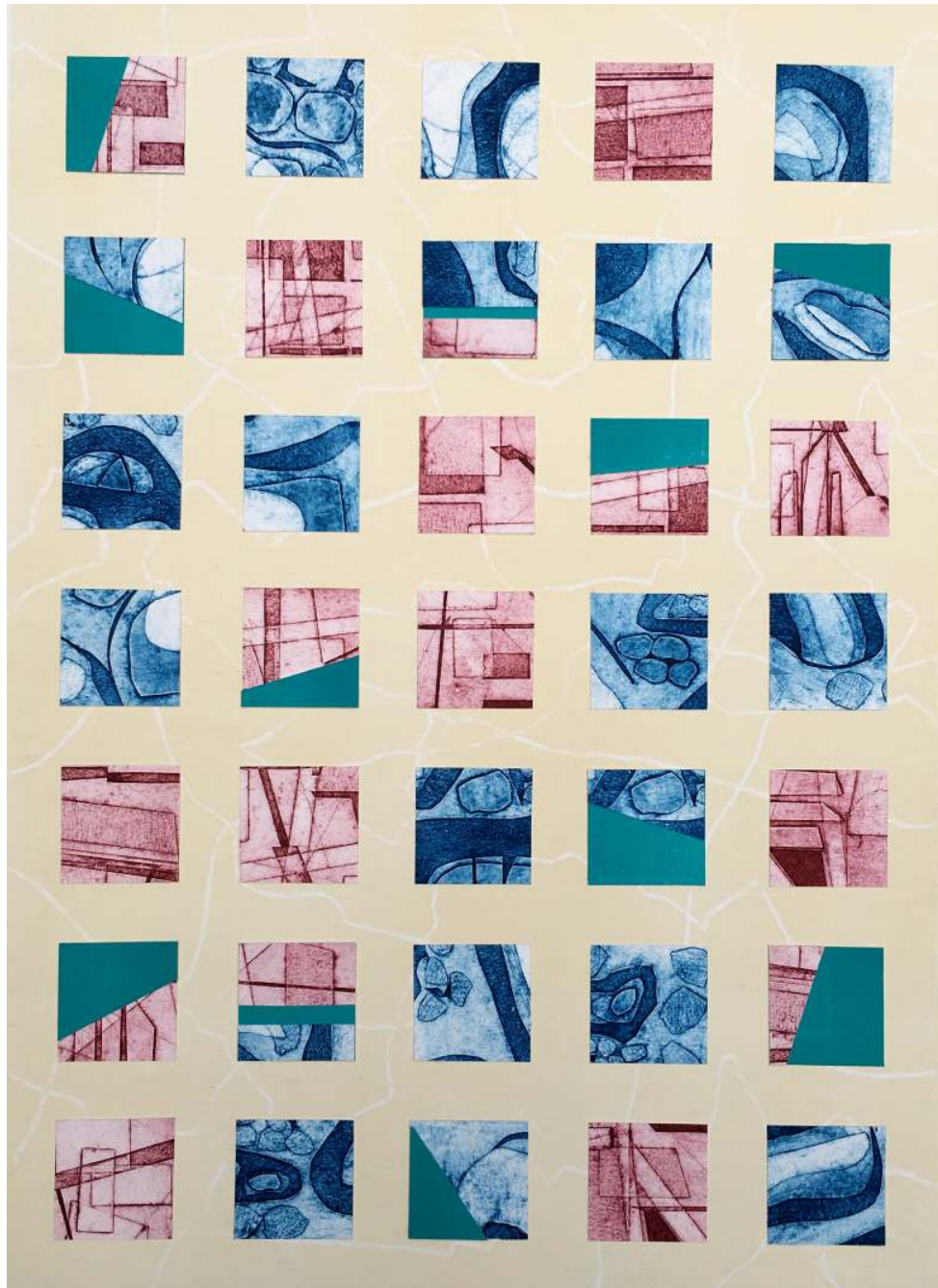
The tiles have been randomly sequenced to create a balanced composition of colour and pattern.

The work includes several ideas and areas of interest that frequently recur in my work, for example – the experience of walking, the variations encountered in our daily lives, recording experience in data, observing patterns in nature and in the built environment, and the exploration of colour and pattern in handmade printmaking.



Variations Series Collages

'Variations VI' by Russell Hughes



Russell Hughes

'Variations VI'

Collage of Handmade Prints.

Unique 1/1

80x60cm.

Framed £245

'Variations VI' by Russell Hughes



Russell Hughes

'Variations VI'

Collage of Handmade Prints.

Unique 1/1

80x60cm.

Framed £245

'Variations VII (Forms)' by Russell Hughes



Russell Hughes

'Variations VII'

Collagraph / Monoprint

Edition 1/7

50x40cm.

Framed £120

'Variations VIII (Forms)' by Russell Hughes



Russell Hughes

'Variations VIII (Forms)'

Collagraph / Monoprint

Edition 1/5

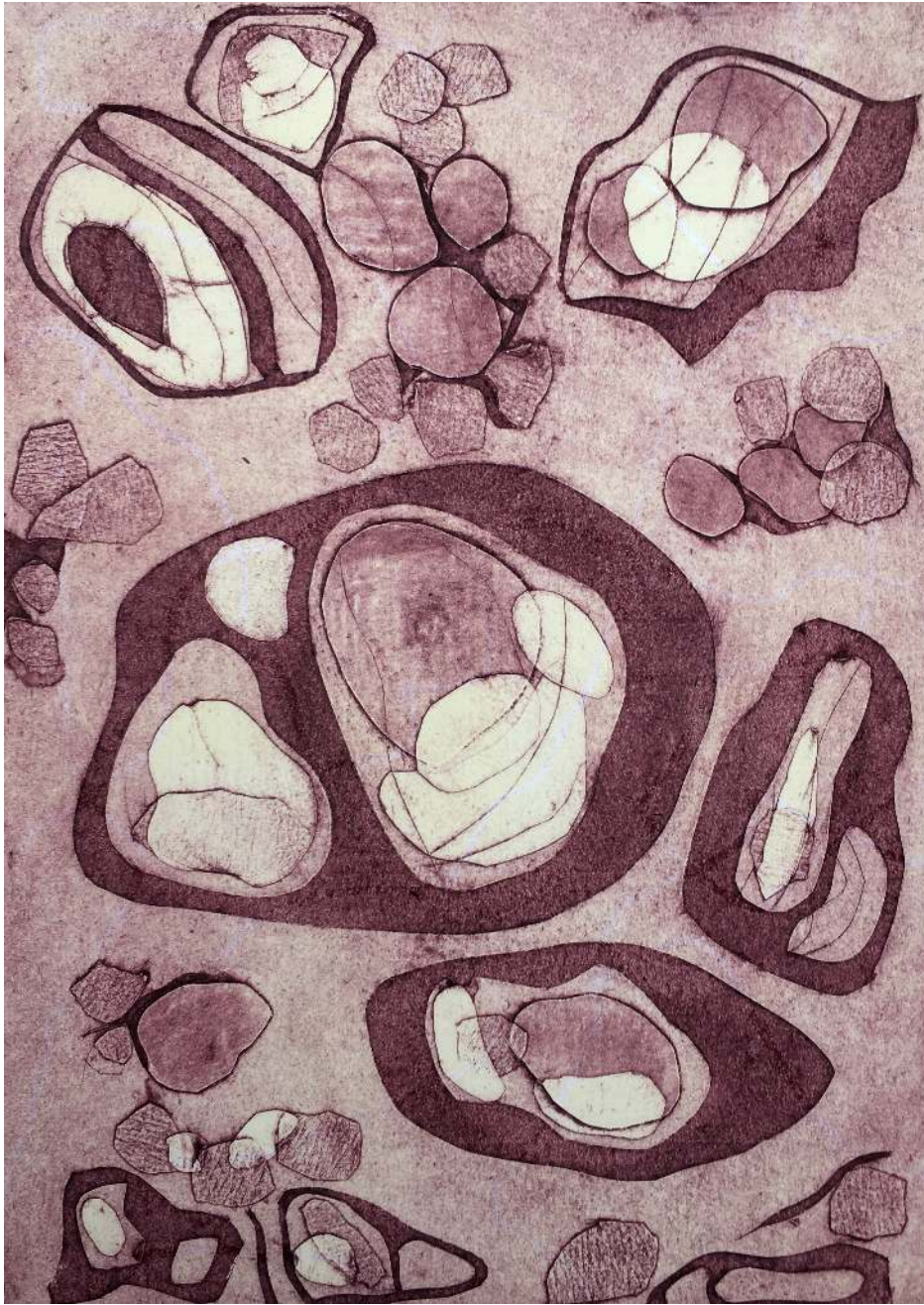
50x40cm

Framed £120

Exhibition Catalogue



'Variations VIII (Forms)' by Russell Hughes



Russell Hughes

'Variations VIII (Forms)'

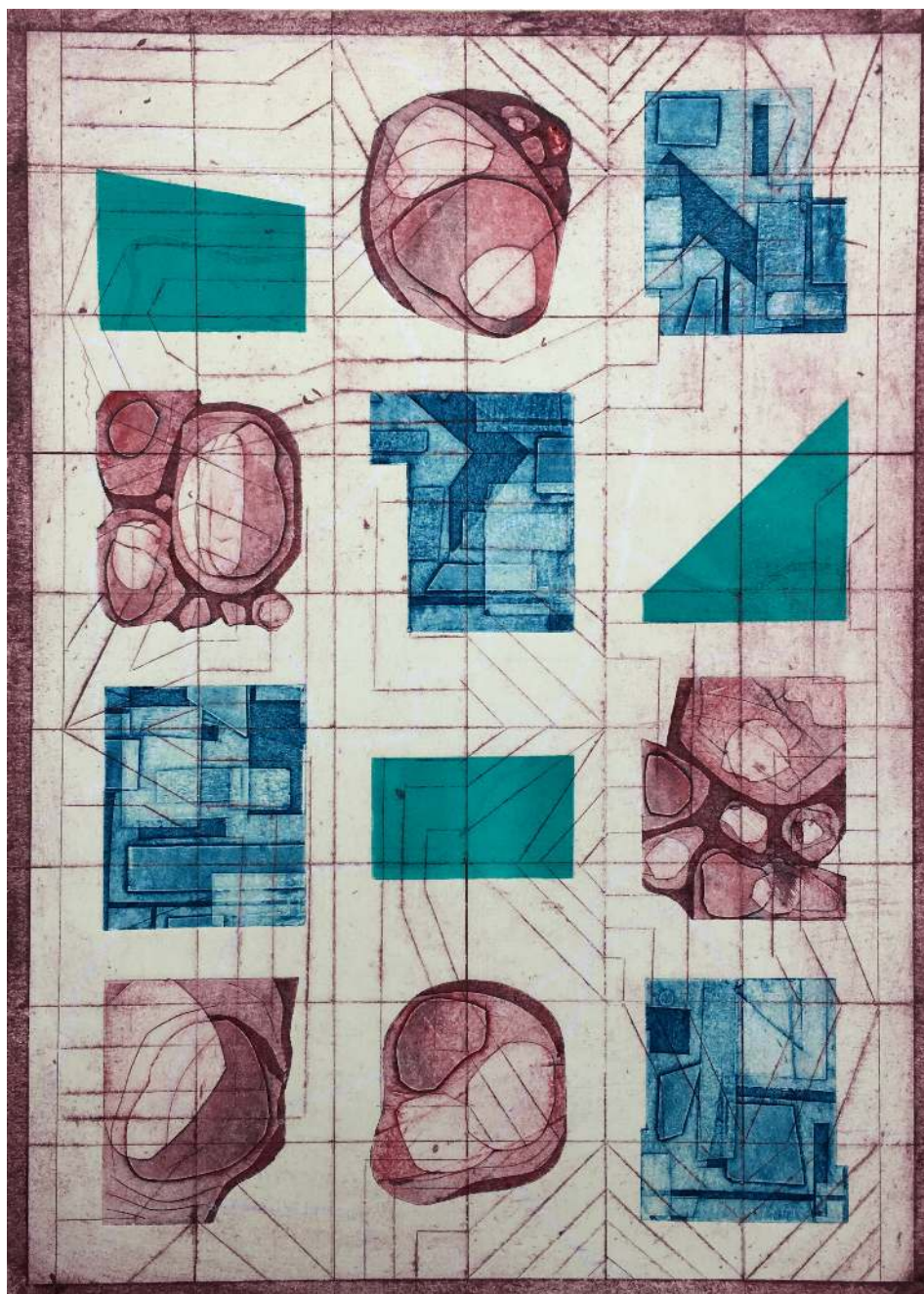
Collagraph / Monoprint

Edition 1/5

50x40cm

Framed £120

'Variations IX (Contours)' by Russell Hughes



Russell Hughes

'Variations IX (Contours)'

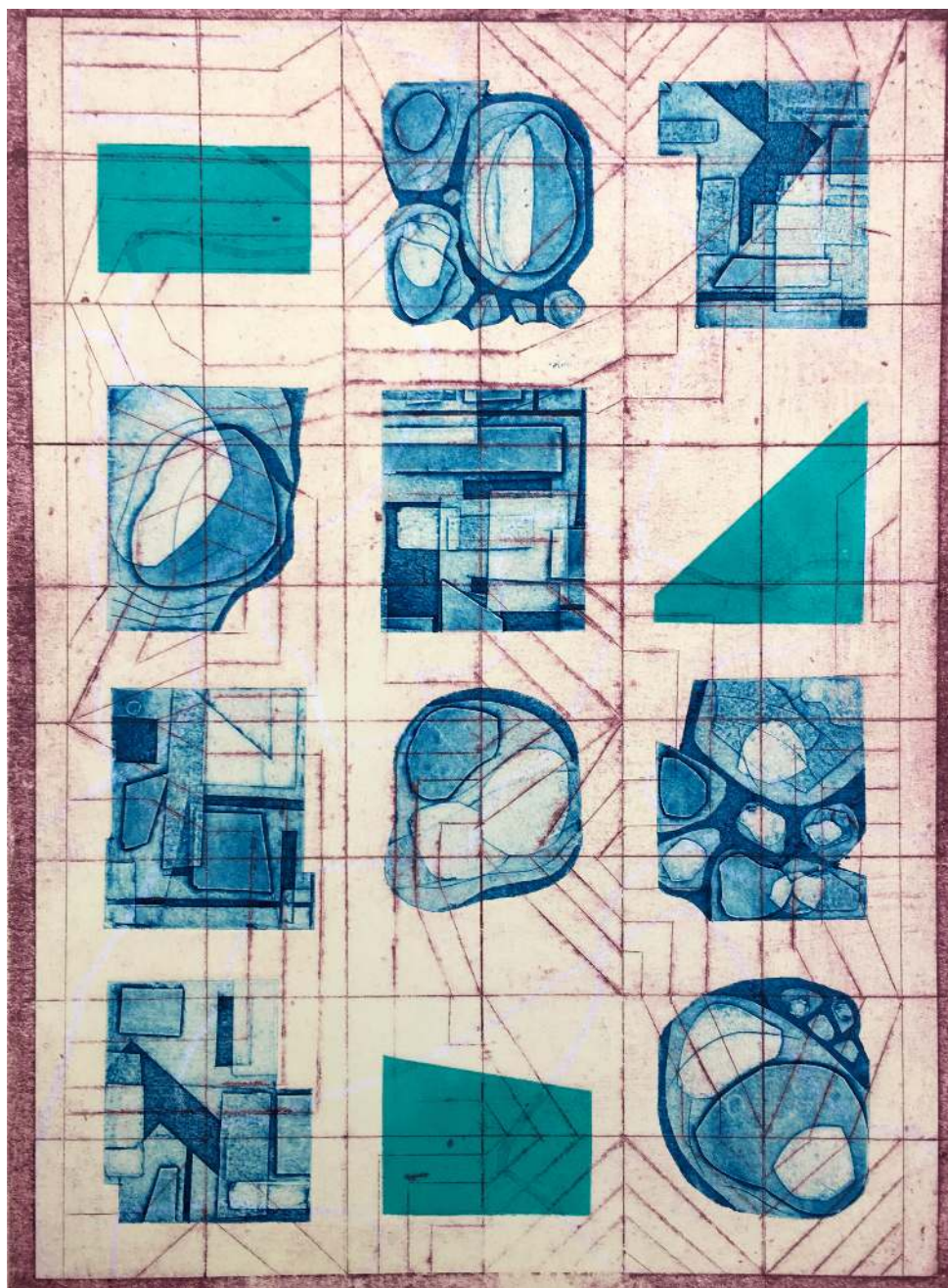
Collagraph / Monoprint

Edition 1/2

50x40cm

Framed £120

'Variations IX (Contours)' by Russell Hughes



Russell Hughes

'Variations IX (Contours)'

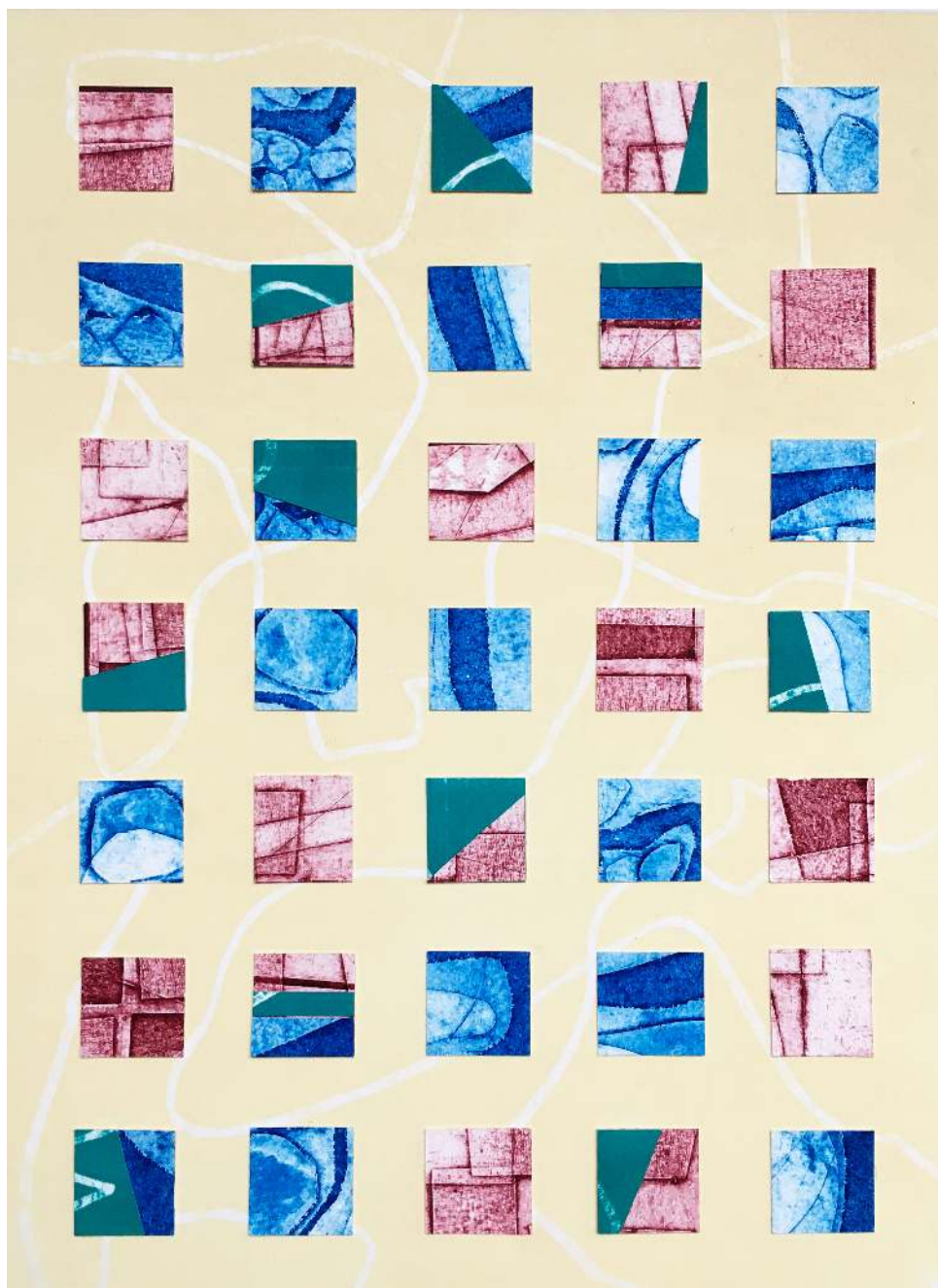
Collagraph / Monoprint

Edition 2/2

50x40cm

Framed £120

'Variations X' by Russell Hughes



Russell Hughes

'Variations X'

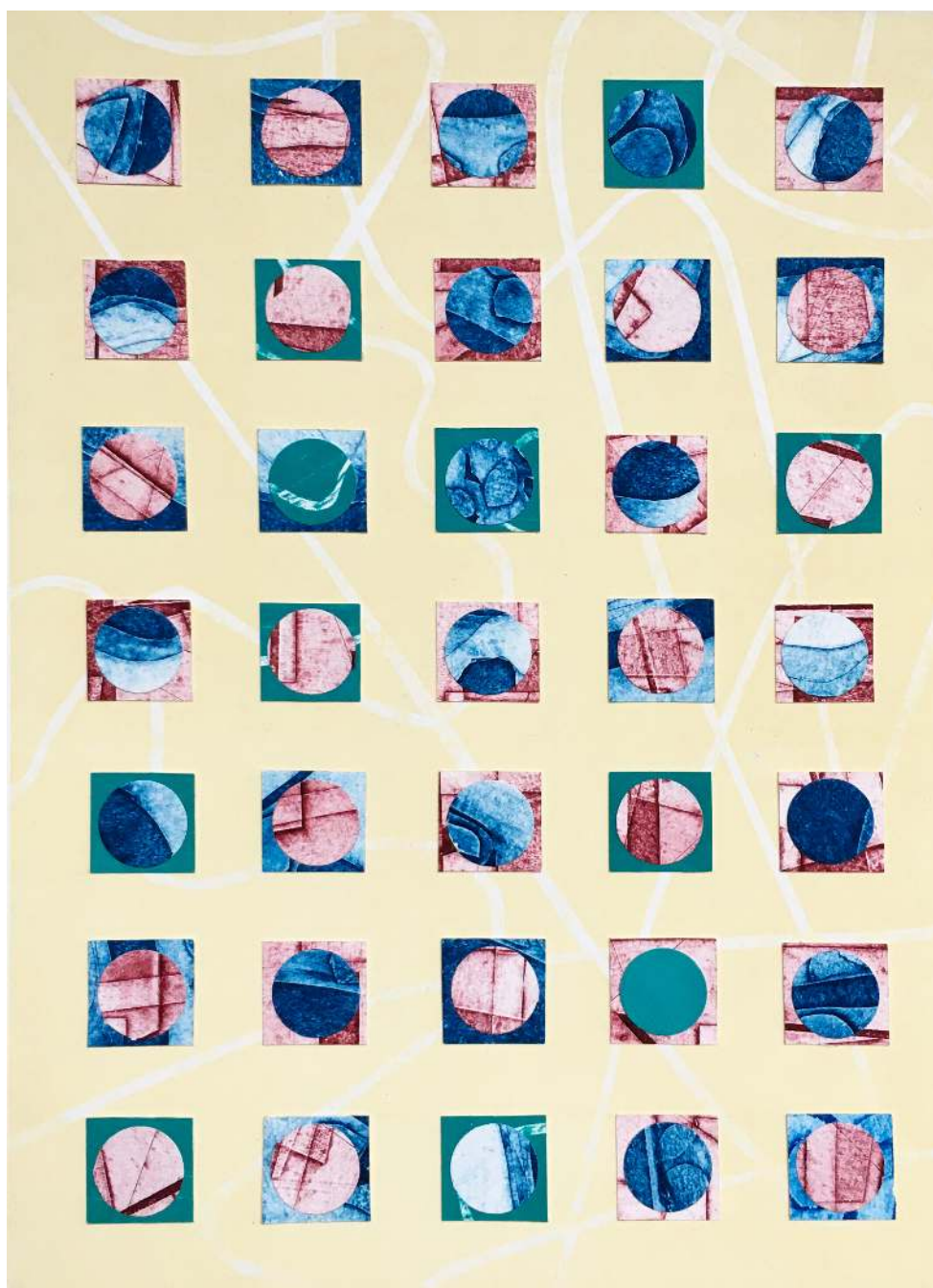
Collage of Handmade Prints

Unique 1/1

50x40cm

Framed £120

'Variations XI' by Russell Hughes



Russell Hughes

'Variations XI'

Collage of Handmade Prints

Unique 1/1

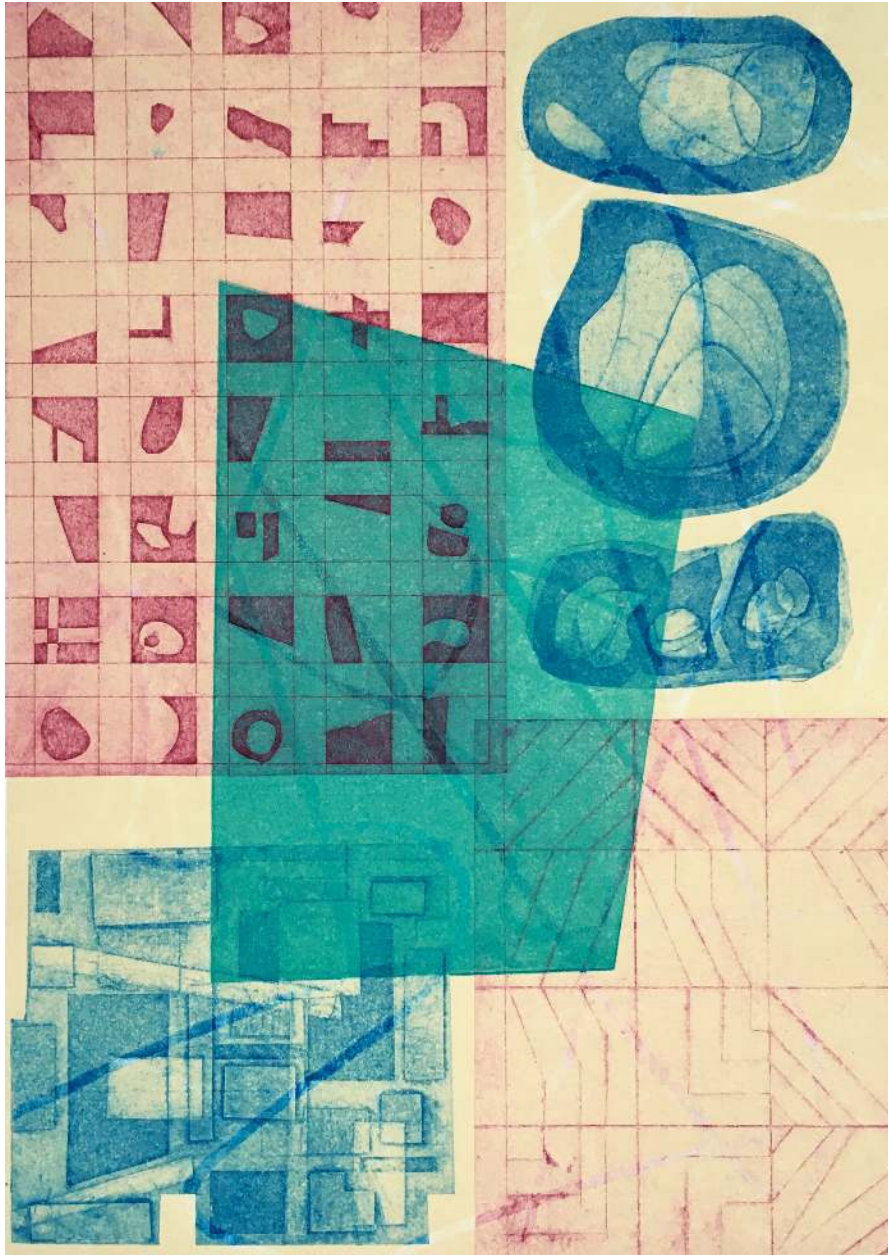
50x40cm

Framed £120

Exhibition Catalogue



'Variations XII' by Russell Hughes



Russell Hughes

'Variations XII'

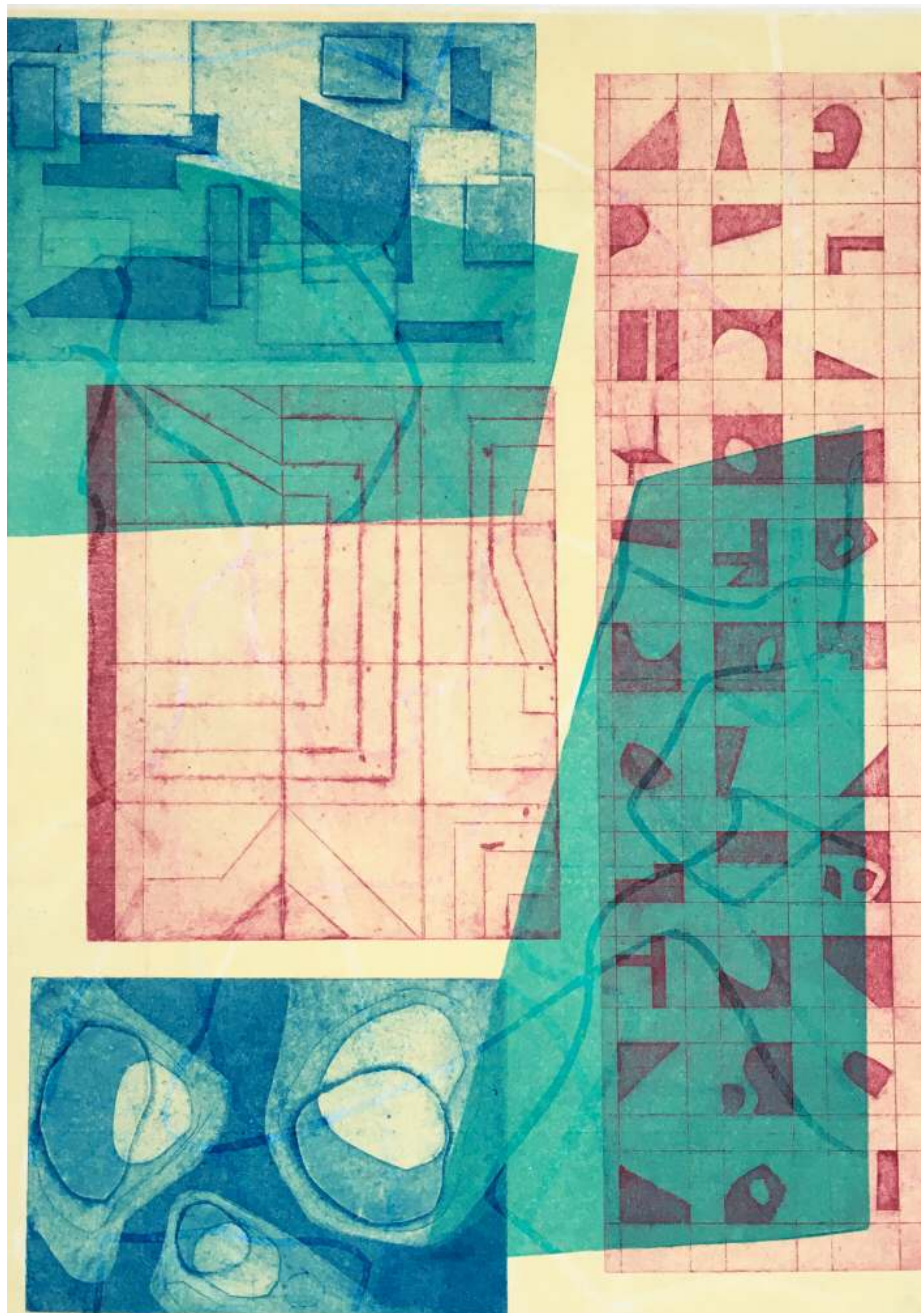
Collagraph / Monoprint

Unique 1/1

50x40cm

Framed £120

'Variations XIII' by Russell Hughes



Russell Hughes

'Variations XIII'

Collagraph / Monoprint

Unique 1/1

50x40cm

Framed £120

Exhibition Catalogue



'Variations' A4 Digital Prints by Russell Hughes



Russell Hughes

'Variations'

Digital Prints

Reproduction

A4

Framed £22.50

Thank you!

Whether you have visited the exhibition in person or viewed it in this catalogue, we would like to thank you for your interest and we hope you enjoyed viewing our work.

As independent artists we are so grateful for your support either through purchasing artwork from us or following us on social media or joining our mailing lists.

All three of us will be participating in North Yorkshire Open Studios in June 2023 and we invite you to visit our studios to see more of our work.

Russell Hughes
www.russellhughesart.co.uk
Email russellhughesart@gmail.com
Instagram @russellhughesart
Facebook Russell Hughes Art
LinkedIn Russell Hughes Art

Jane Claire Wilson
Email janeclairewilson@hotmail.com
Instagram @janeclairewilson

Rachel Morrell
www.rachelmorrell.co.uk
Instagram @rachelmorrellart