

LTspice Model

LDO

TEXAS INSTRUMENTS

TLV1117LV15DCYR

Model Information

Model	A macro model
Call Name	MDC_TLV1117LV15DCYR_LT
Pin Assign	1:GND 2:OUTPUT 3:INPUT
File List	Model Library MDC_TLV1117LV15DCYR_LT01.lib Model Report MDC_TLV1117LV15DCYR_LT_LT.pdf(this file)
Verified Simulator Version	LTspiceXVII

Note

References

The information which was used for modeling is as follow:

[Data Sheet]

●Date/Version	2011-2015
●Product name	TLV1117LV15DCYR
●Company name	TEXAS INSTRUMENTS

[Characteristics listed]

●Characteristics	VIN-VOUT,Vdrop,Ilimit Line-Tran,Road-Tran
------------------	--

Simulation Condition

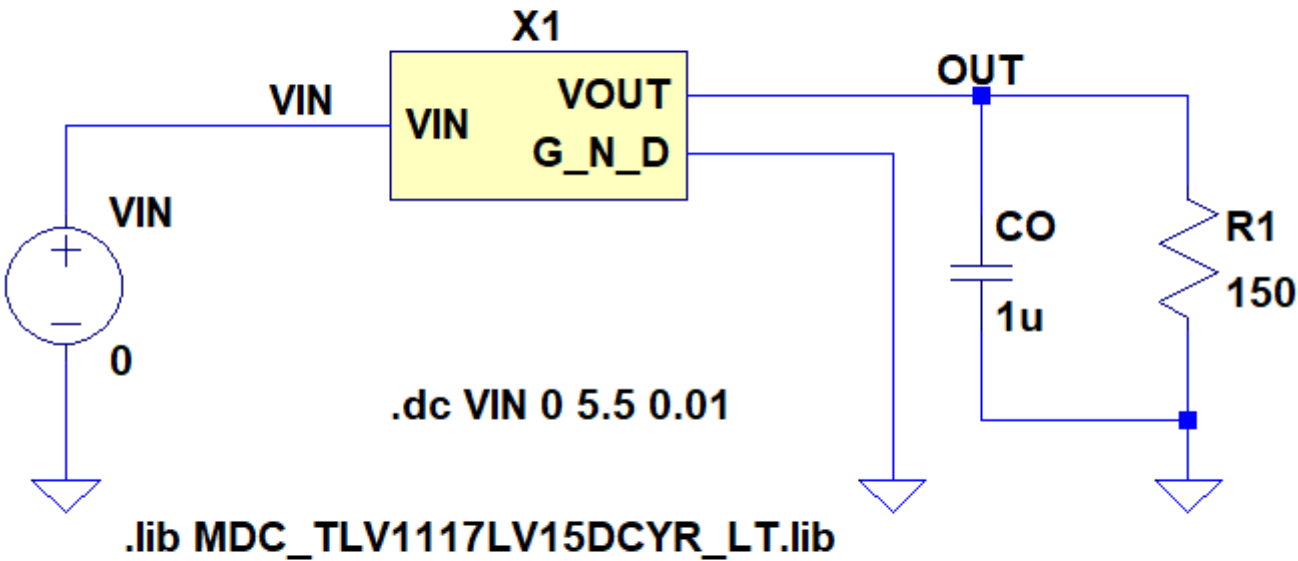
This table shows the range of evaluated simulation range that was not occurs any convergence problems in this area.

Item	Condition	Unit
Temperature	25	deg C

Model Functions Table

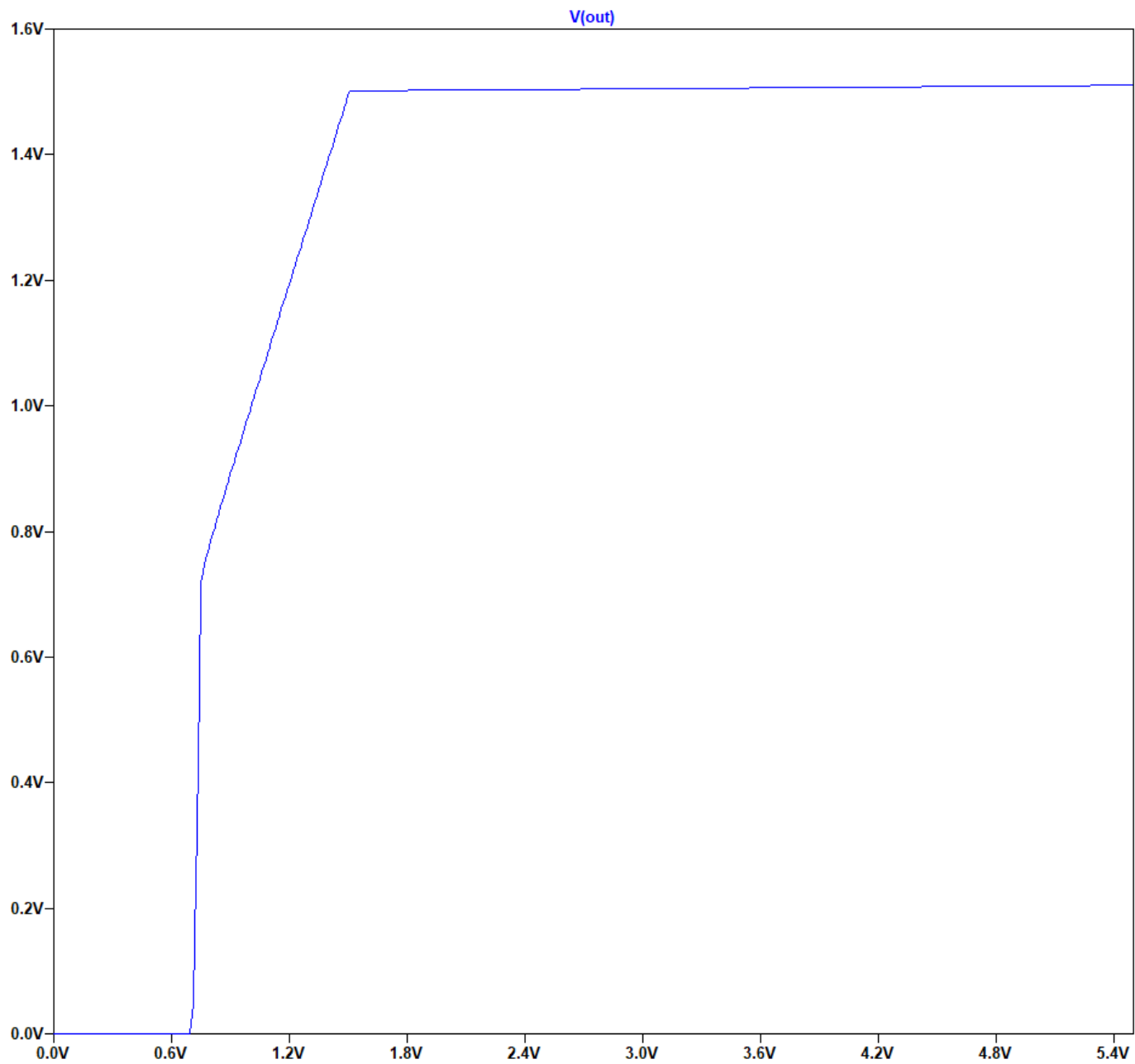
Functions	Implemented
VIN-VOUT	<input type="radio"/>
Vdrop	<input type="radio"/>
Ilimit	<input type="radio"/>
Line-Tranjent	<input type="radio"/>
Load-Tranjent	<input type="radio"/>
Ripple Rejection	<input type="radio"/>

VIN-VOUT Testbench
Referred to Data Sheet



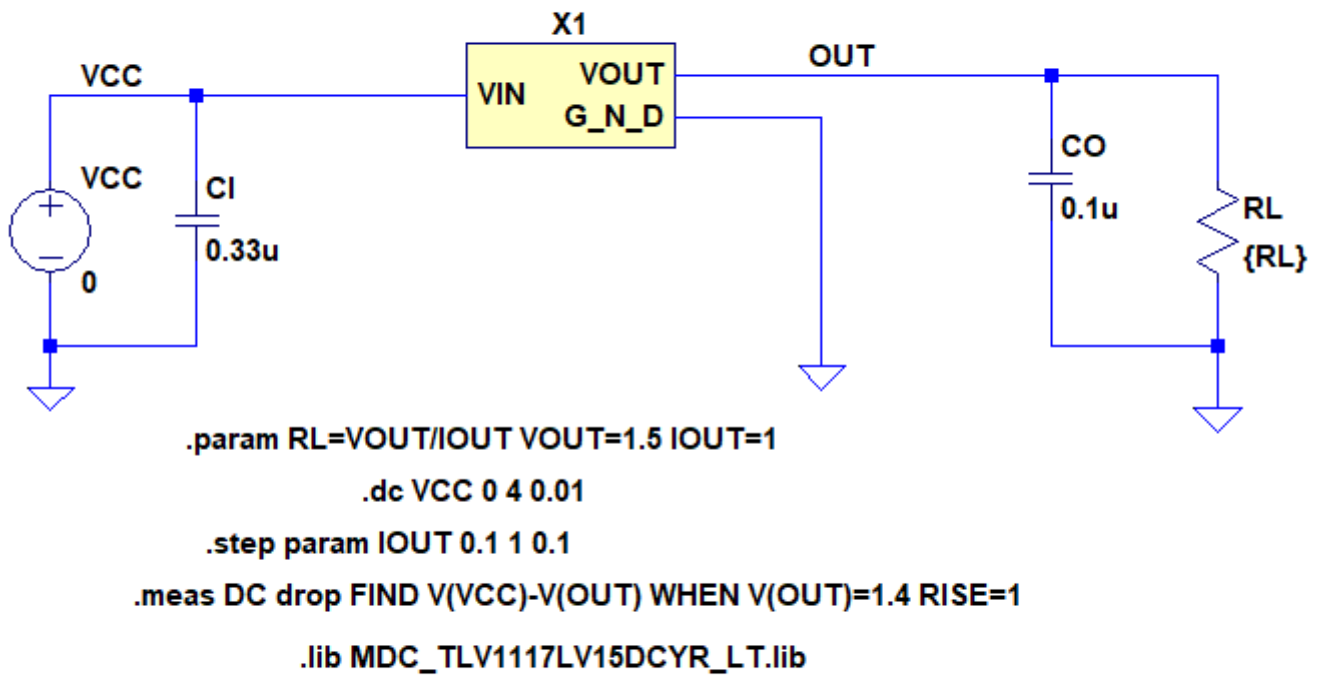
Simulation results are following.
Explanatory notes — : simulated

VIN-VOUT



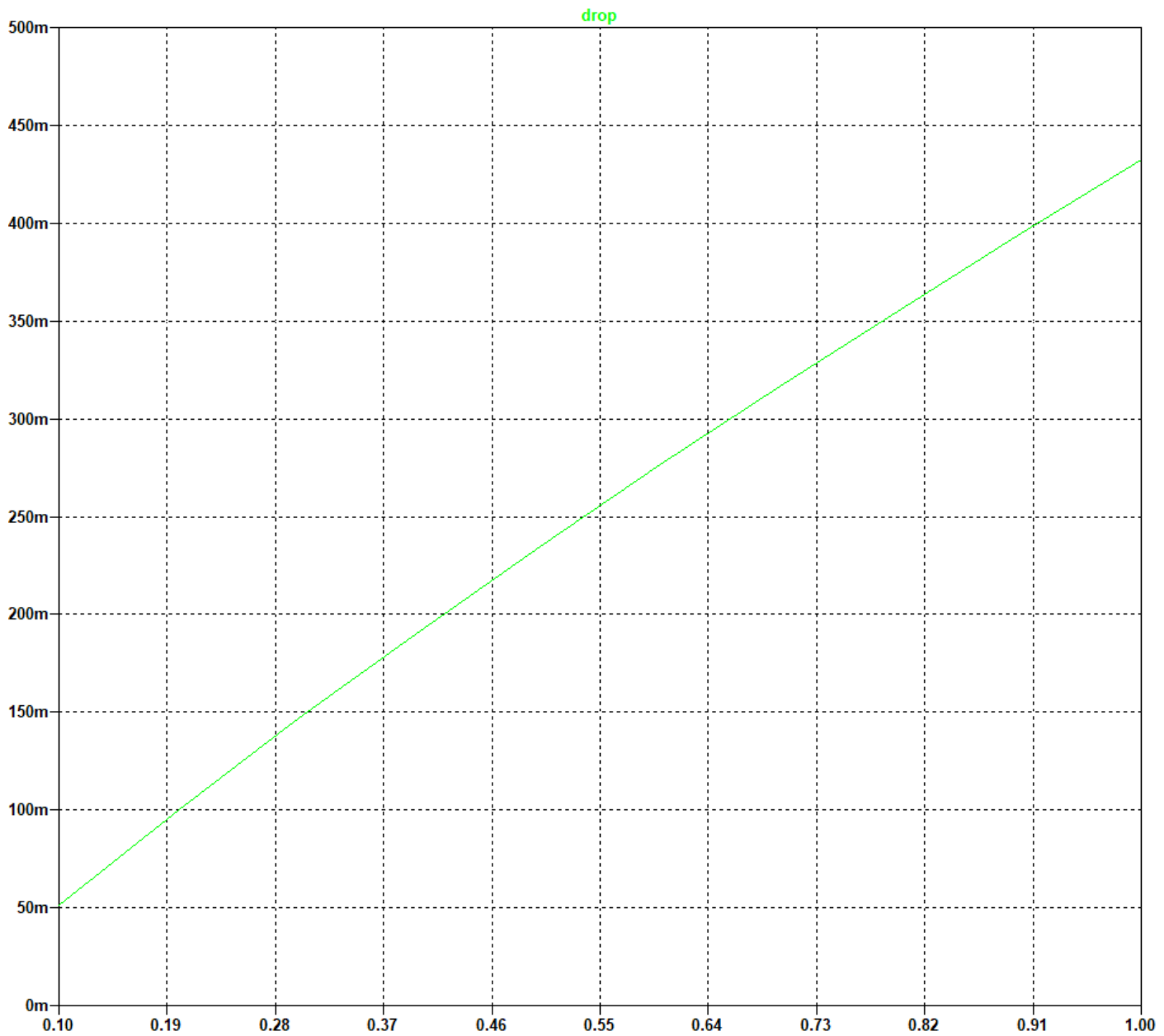
Vdrop Testbench

Referred to Data Sheet



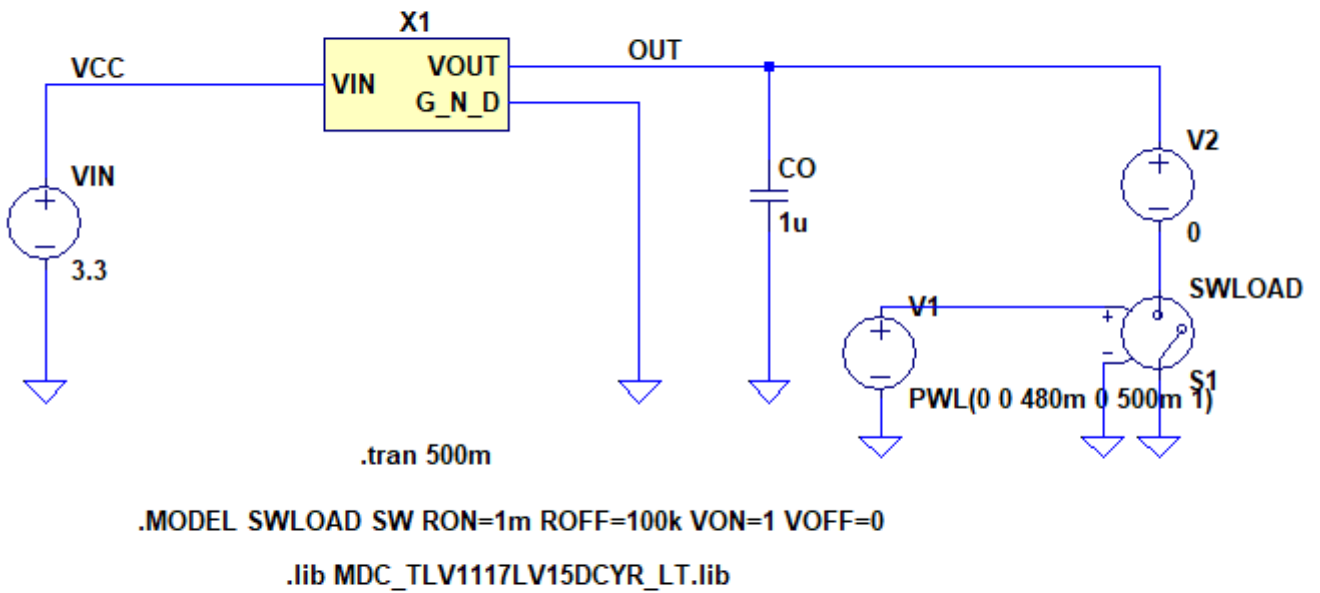
Simulation results are following.
Explanatory notes — : simulated

Vdrop



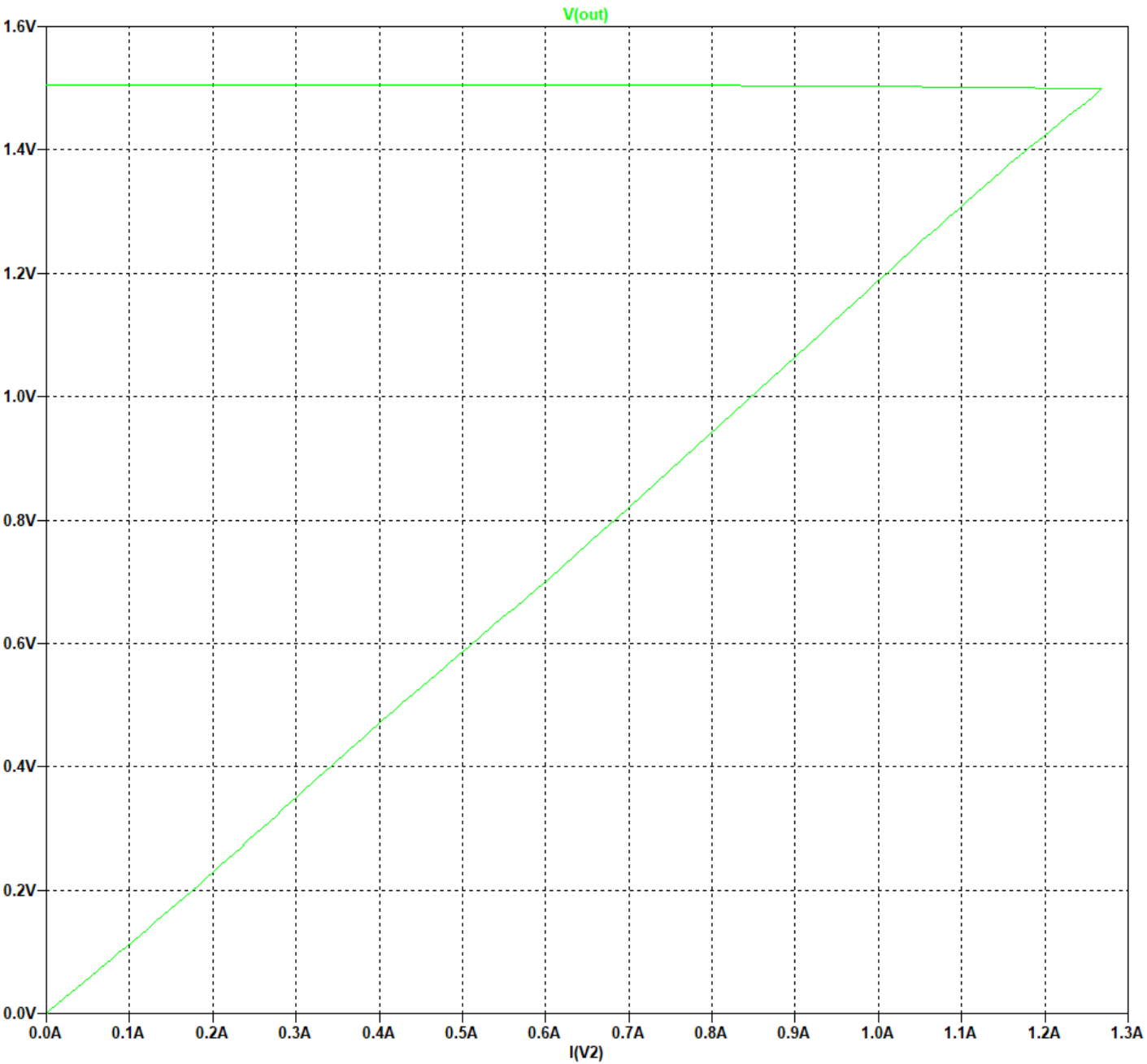
Ilimit Testbench

Referred to Data Sheet

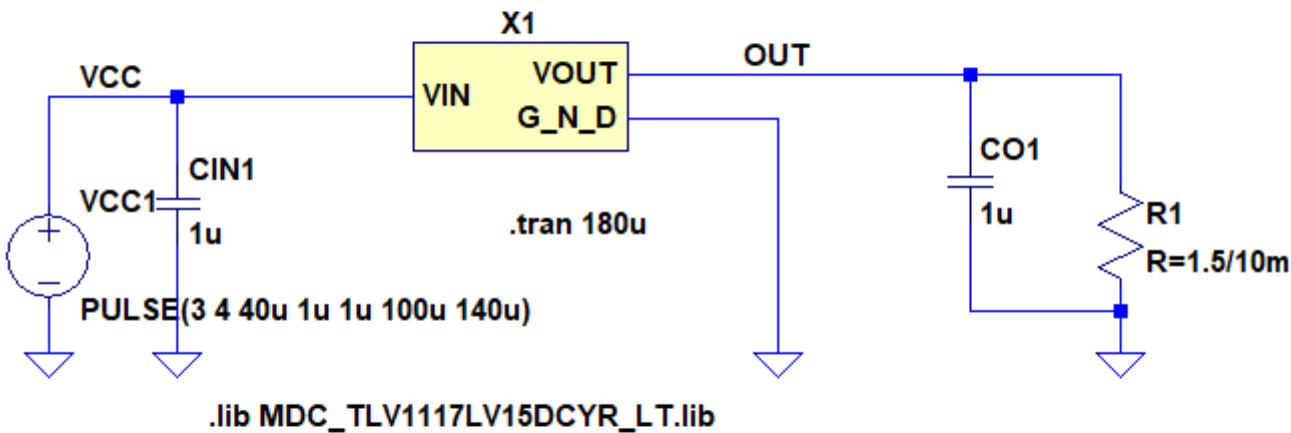


Simulation results are following.
Explanatory notes — : simulated

Ilimit

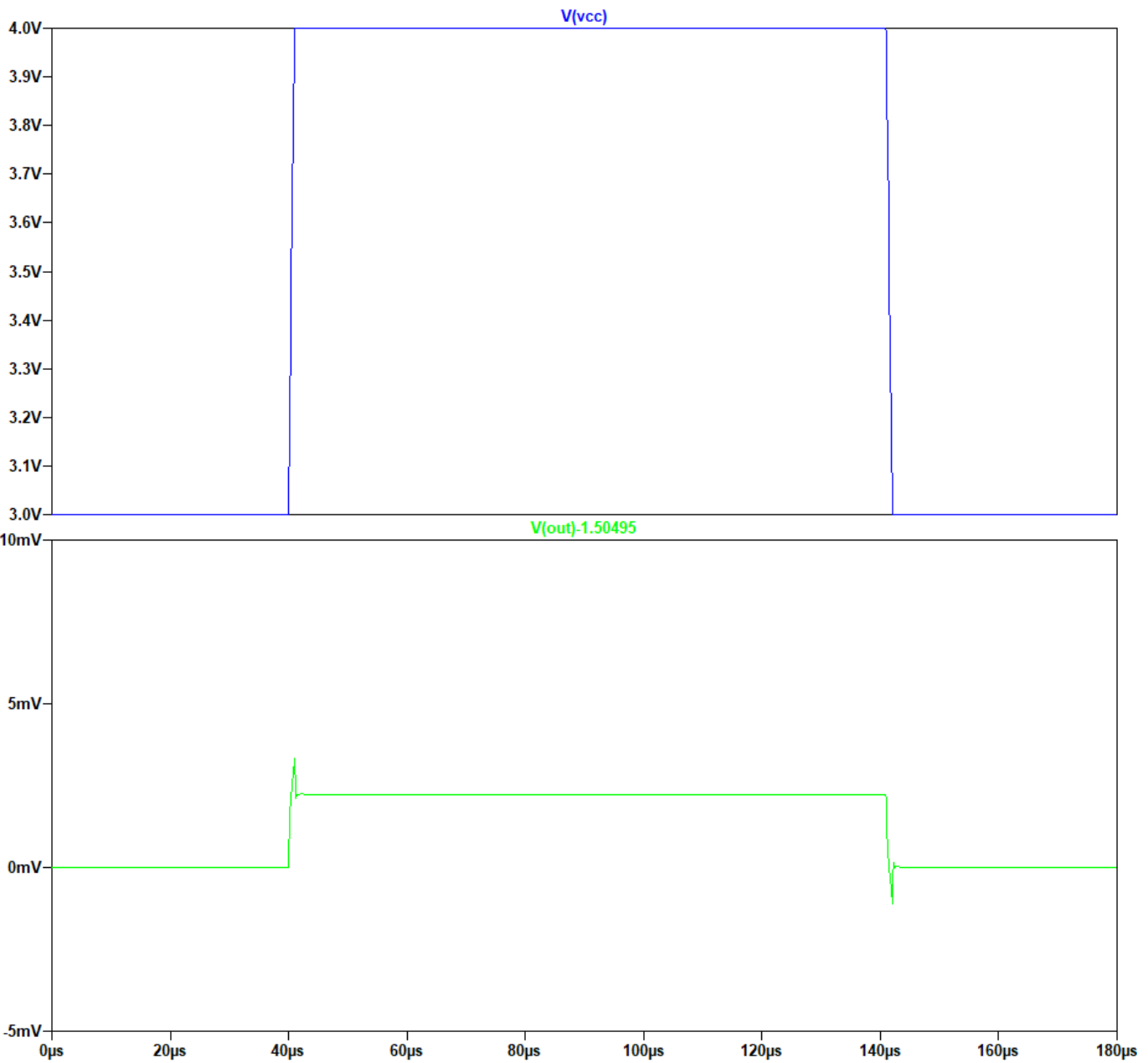


Line-Tran Testbench
Referred to Data Sheet



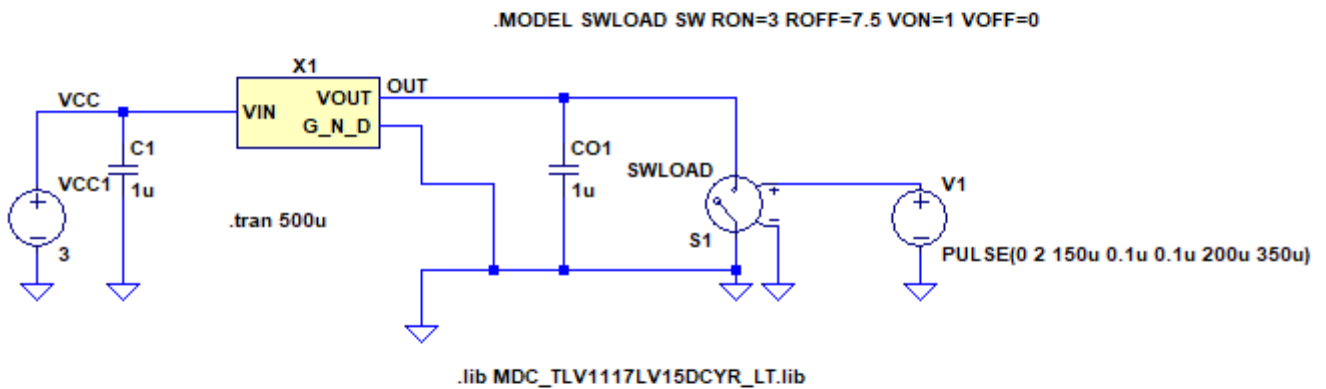
Simulation results are following.
Explanatory notes — : simulated

Line-Tran



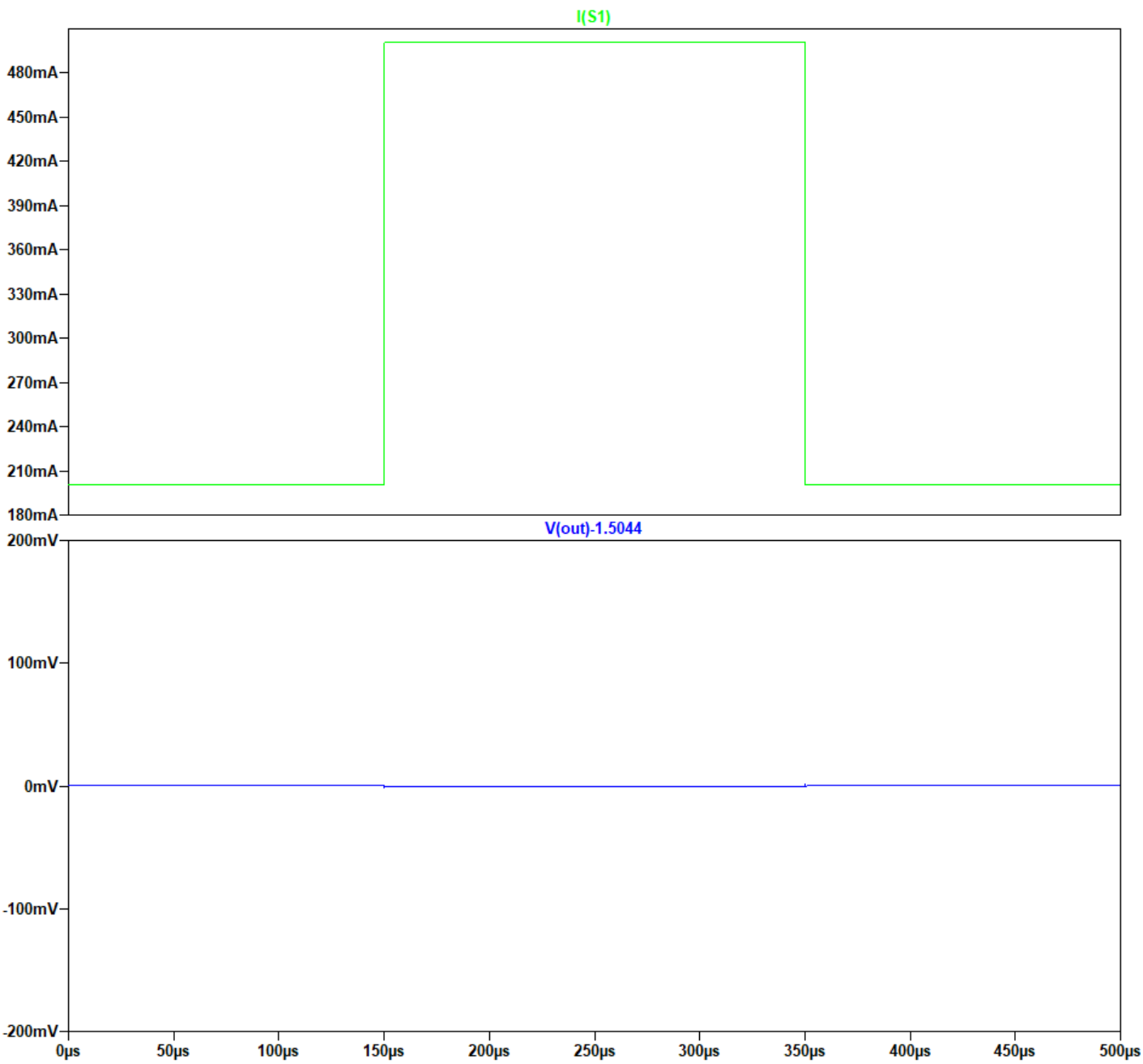
Load-Tran Testbench

Referred to Data Sheet



Simulation results are following.
Explanatory notes — : simulated

Load-Tran



DISCLAIMER

1. This SPICE (Simulation Program with Integrated Circuit Emphasis) model and its content (the "Contents") are copyright of MoDeCH Inc. All rights reserved. Any redistribution or reproduction of any or all part of the Contents in any form is prohibited without express written permission made by MoDeCH Inc.
2. MoDeCH Inc. as licensor (the "Licensor") hereby grants to you, as licensee (the "Licensee"), a non-exclusive, non-transferable license to use the Contents as long as you abide by the terms and conditions of this DISCLAIMER.
3. The Licensee is not authorized to sell, loan, rent and redistribute or license the Contents in whole or in part, or in modified form, to anyone.
4. The Licensor shall in no way be liable to the Licensee or any third party for any loss or damage (including ,but not limited to, lost profits, or other incidental, consequential, or punitive damages), however caused (including through negligence) which may be directly or indirectly suffered from, arising out of, or in connection with, any use of the Contents .
5. Notwithstanding anything contained in this DISCLAIMER, in no event shall Licensor be liable for any claims, damages or loss which may arise from the modification, combination, operation or use of the Contents with the Licensee's computer programs.
6. The Licensor does not warrant that the Contents will function in any environment.
7. The Contents may be changed or updated without notice. MoDeCH Inc. may also make improvements and/or changes in the products, pricing and/or the programs related to the Contents at any time without notice.



MoDeCH Inc.

Head Office

Location: 5-15 Yokoyama-cho, Hachioji-Shi, Tokyo 192-0081, Japan

Tel:+81-42-656-3360

E-Mail: model-on-support@modech.co.jp

URL: <http://www.modech.com/en/>