

# Revolution



FURNISHINGS  
MADE IN NEW ENGLAND



## Bath Furniture Collection

# Table of Contents

- Our Mission ..... 1
- Wholesale Program Details ..... 2
- General Product Details ..... 3
- Styles Overview ..... 4
- Series A ..... 5
- Series B ..... 6
- Series C ..... 7
- Series D ..... 8
- Series E ..... 9
- Series F ..... 10
- Series G ..... 11
- Door Styles ..... 12
- Finish Options ..... 13
- Details ..... 14
- Shipping/Delivery ..... 15
- Details and Disclaimers ..... 16

# About Us

## Hand Crafted. Locally. The way it used to be.

**Price + Quality = Value.** Revolution Furnishings is the stubborn company that believes quality should be the most important component of the value equation. As imported furniture products have flooded the market in the last few decades, our peers have become ever-more distracted by price. Sadly, this has filled homes with inferior quality, questionable materials, and product lifecycles that are far shorter than what our neighbors deserve.

Revolution Furnishings takes pride in delivering our local community products with equal focus on price and quality. We create products that are:

- **Made to order.** Designed to fit your space, not our catalogs.
- **Hand crafted** from solid wood and veneers - never particleboard.
- **Hand finished** with durable lacquers designed to perform in the kitchen and bath industry.
- **Durable:** Structural components are fabricated from ¾" veneers and dadoed joinery for maximum durability.
- **Better for your family.** Our wood and veneers are sourced locally and are either formaldehyde-free or CARB-2 Compliant. How? Premium materials and ultra-low emission glues are used in place of lower-cost adhesives often used in furniture construction.

**Thanks for supporting New England Manufacturing!**



# Our Bathroom Furniture

Over 25 years ago Revolution Furnishings started hand-crafting furniture for discerning dealers in the greater Northeast. For the first decade, our focus was solely in bedroom, office, and entertainment, and living areas. Naturally, as our reputation for quality and durability grew, requests to see our efforts in other areas of the home followed. As a result, Cedar Crest Cabinetry was born – a provider of true custom cabinetry for homes throughout New England. The Revolution Furnishings Bathroom Furniture Collection is the culmination of these two efforts; leveraging our expertise in furniture design and fabrication against the trends seen through hundreds of custom projects in homes across New England, we have crafted a line of bathroom furniture designed to deliver a timeless look with products crafted the old way: *by the hand of your neighbor from materials you trust.*

**From our home to yours, we hope you enjoy!**

# Products with Integrity

## Quality.

Your bathroom deserves superior quality. High traffic and variable humidity conditions put your furniture to the test. Our products are hand-crafted from the finest materials. A combination of virgin solid material and eco-friendly veneers set the stage for enduring value. Coupled with the pride of New England craftsmanship, our products are built to withstand the test of time.

*“I purchased my vanity at the box store. One year later, it’s falling apart. I won’t make that mistake again.” — Laura R.*

## Style.

Choose from any of our six styles, designed to provide that “furniture look” – a class above typical bath cabinetry. Our styles will fit into any décor; traditional, transitional, contemporary and beyond.

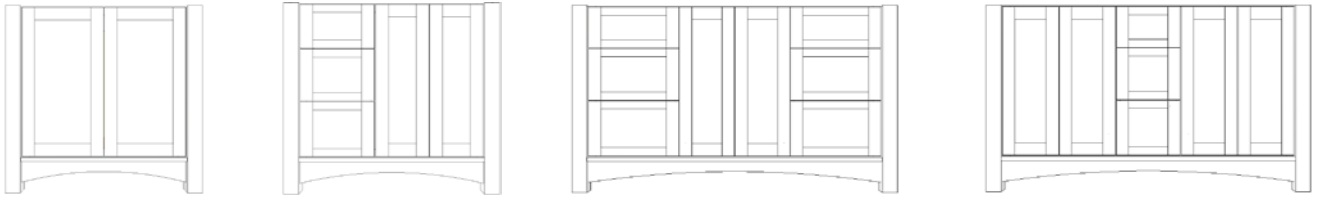
## Custom.

Choose your base style. Then, make it yours. Given the customization options to choose from, your finished piece will likely be one-of-a-kind.

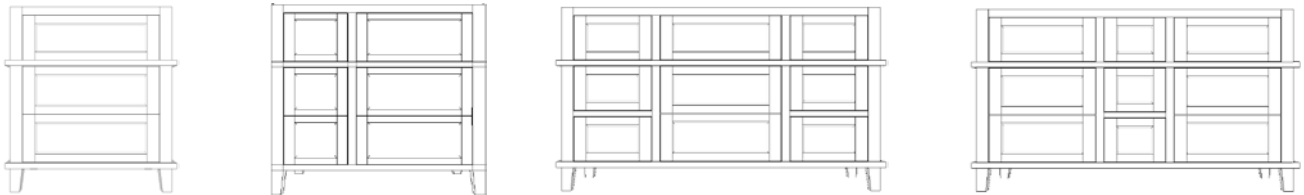
- Sizes from 24” to 72”
- Elegant finishes—a combination of paints and stains and glazes
- Multiple door styles—available in inset or overlay
- Depth options: 18” or 21”
- And more! If you need a specific adjustment, just ask.

# Pick Your Style

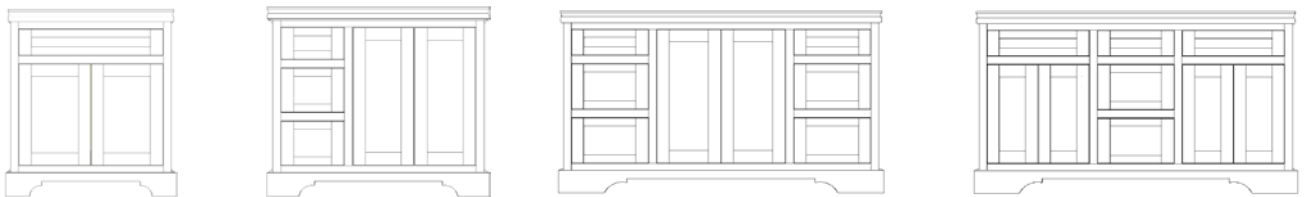
## Series A



## Series B



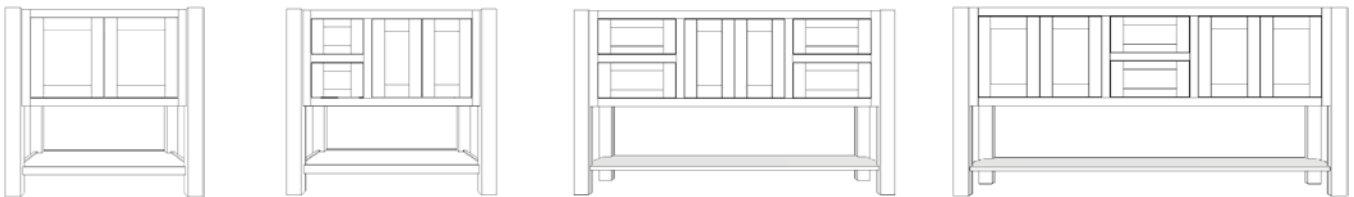
## Series C



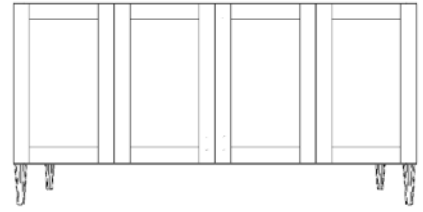
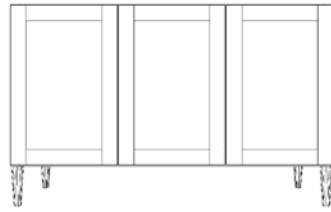
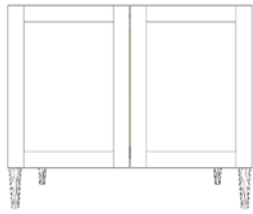
## Series D



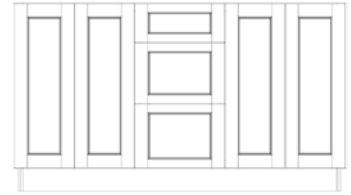
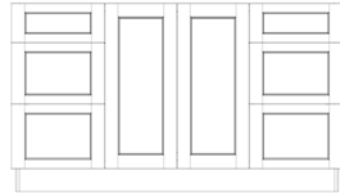
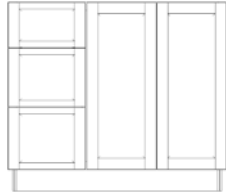
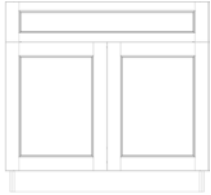
## Series E



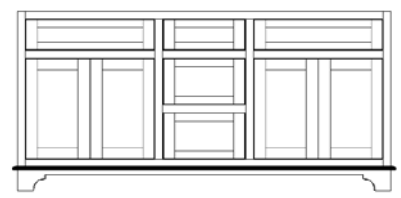
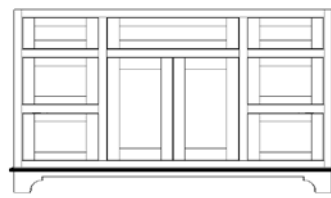
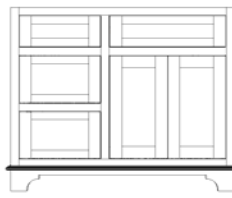
## Series F



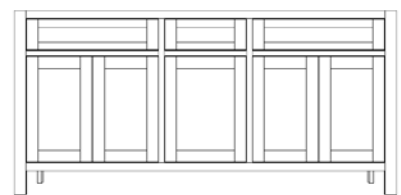
## Series G



## Series Harpswell



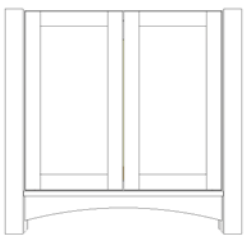
## Series Freeport



# Series A



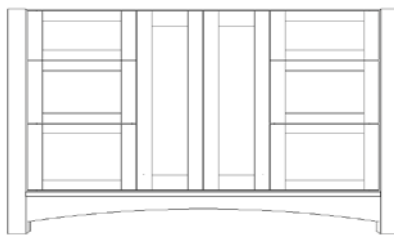
## Size Configurations:



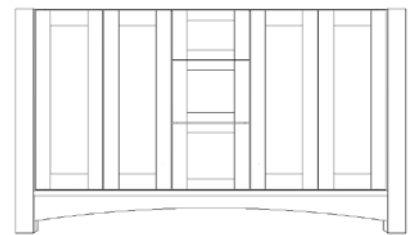
27", 30", 36"



39", 42" (L or R)



48", 54", 60" Single



60" Double, 66", 72"

## Notes:

The Series A delivers our most traditional furniture look, with lean legs and inset appeal. Full-height doors calm the façade while providing complete access to under-sink storage areas.



# Series A Options



## Additional Series options:

- Standard height 34- $\frac{1}{2}$ ", depth 21.75".
- Available in flush inset hinge style only.
- Available with either full-height doors or false drawer in front of the sink area.
- Note: 39" and 42" models have two drawers only. Top front is not operable to allow for center-sink applications. For offset-sink applications, inquire about adding a functional third drawer.

# Series B



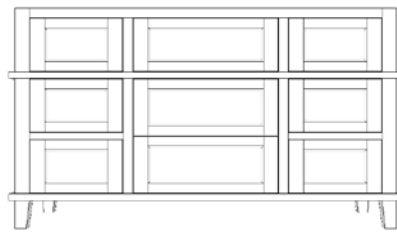
## Size Configurations:



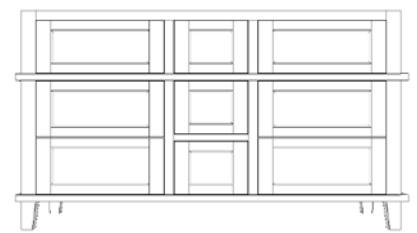
24", 27", 30", 36"



39", 42" (L or R)



48", 54", 60" Single



60" Double, 66", 72"

## Notes:

For those who love that stacked drawers look, the Series B is it! The standard configuration includes two drawer fronts made into a door for full access to the under-sink area. Optionally, you can choose to upgrade to two fully functional U-shaped drawers under each sink. What will you do with all that storage?

# Series B Options



## Additional Series options:

- Standard under-sink configuration: Top panel is a false front. Middle and lower drawer fronts are faux, hinged to act as a single door. Under-sink area is open.
- Optional under-sink configuration: Top panel is a false front. Middle and lower sections feature fully functioning drawers. These are U-shaped to allow for plumbing installation flexibility.
- Standard height 34-½", depth 21" (approximate, inquire for exact dimensions)
- Available in flush inset hinge style only.
- Note: 39" and 42" models have two drawers only. Top front is not operable to allow for center-sink applications. For offset-sink applications, inquire about adding a functional third drawer.

# Series C



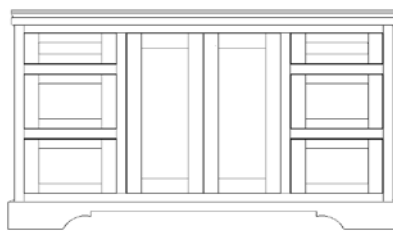
## Size Configurations:



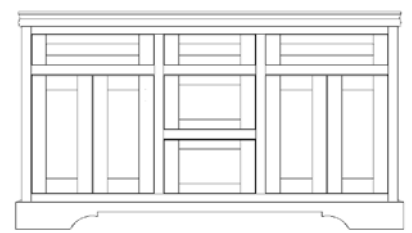
24", 27", 30", 36"



39", 42" (L or R)



48", 54", 60" Single



60" Double, 66", 72"

## Notes:

For a traditionally elegant look, look no further than the Series C. Cove molding adds depth to the countertop profile while a full-wrap valanced toe provides visual balance and grounding to the piece. Available with full height doors or false drawer in the sink cavity.

# Series C Options



## **Additional Series options:**

- Standard height 34-½", depth 21"
- Available in flush inset hinge style only.
- Available with either full-height doors or false drawer in front of the sink area.
- Available with attached filler for adjacent wall configurations.
- Optional 3" under-sink pullout (for rear-plumbing installs only).
- Note: 39" and 42" models have two drawers only. Top front is not operable to allow for center-sink applications. For offset-sink applications, inquire about adding a functional third drawer.

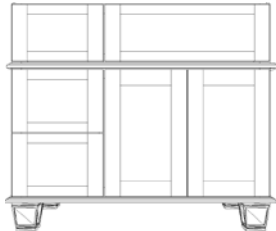
# Series D



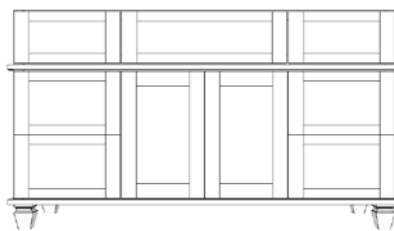
## Size Configurations:



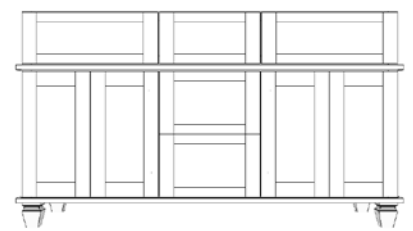
24", 27", 30", 36"



39", 42" (L or R)



48", 54", 60" Single



60" Double, 66", 72"

## Notes:

A traditional look, the Series D offers a bun-foot treatment with two layers of molding.

## Series D Options



### Additional Series options:

- Standard height 34-½", depth 21".
- Available in flush inset hinge style only.
- Optional 3" under-sink pullout (for rear-plumbing installs only)
- Note: 39" and 42" models have two drawers only. Top front is not operable to allow for center-sink applications. For offset-sink applications, inquire about adding a functional third drawer.

# Series E



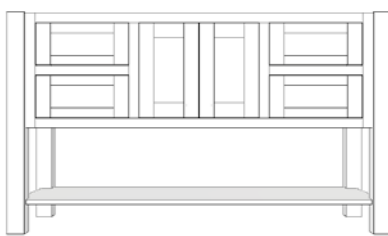
## Size Configurations:



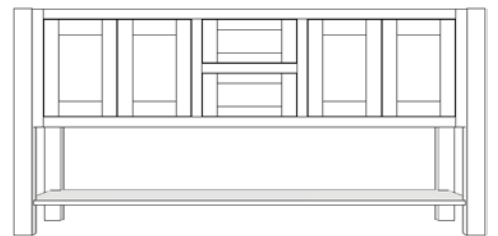
27", 30", 36"



39", 42" (L or R)



48", 54", 60" Single



60" Double, 66", 72"

## Notes:

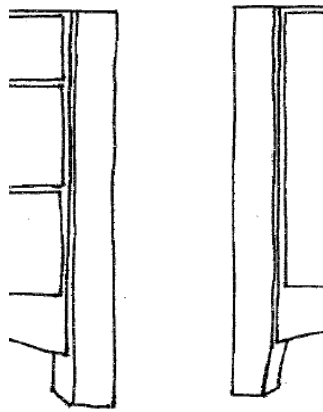
Transitional perfection. Farmhouse elegance. The Series E stands proudly on four solid legs.



# Series E Options



## Leg Choices:



**Square**

**Shaker**

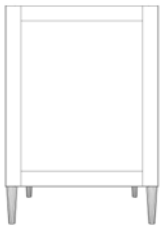
## Additional Series options:

- Standard height 34-½", depth 22".
- Available with all door styles.
- Note: 39" and 42" models have one drawer only. Top front is not operable to allow for center-sink applications. For offset-sink applications, inquire about adding a functional second drawer.

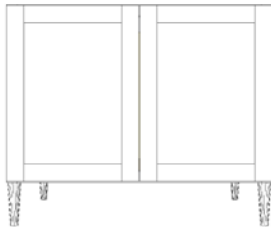
# Series F



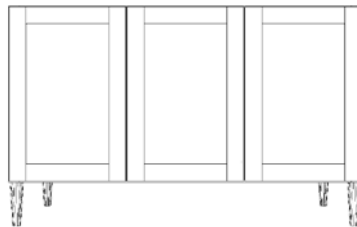
## Size Configurations:



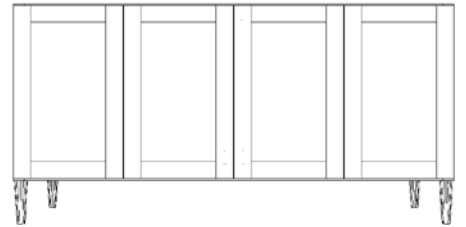
24"



27", 30", 36"



48", 54", 60 Single"



60 Double", 66", 72"

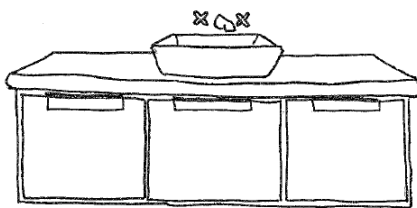
## Notes:

Our most contemporary line, the Series F offers clean lines and minimal styling to fit urban décor trends. Standard 30" height (24" cabinet, 6" foot) for vessel sink applications with tapered feet for a mid-century modern look. Select the optional 18" tall version (with no feet) for a floating application.

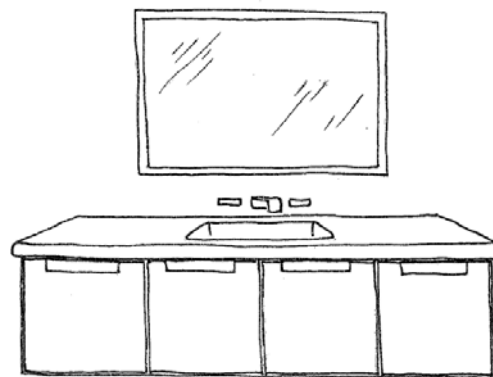
# Series F Options



## Optional Floating Configuration:



Series F Floating - 54" (18" tall)



Series F Floating - 72" (18" tall)

## Additional Series options:

- Standard height 30" with feet, depth 21" (approx., inquire for exact dimensions)
- Floating version standard at 18" tall, depth 21".
- Floating version available with vertical or horizontal grain (to match slab door grain direction selection)

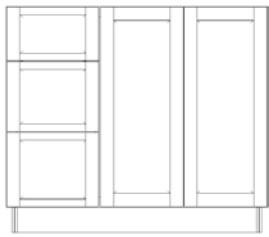
# Series G



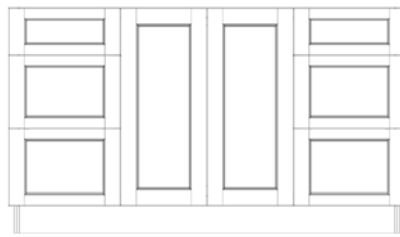
## Size Configurations:



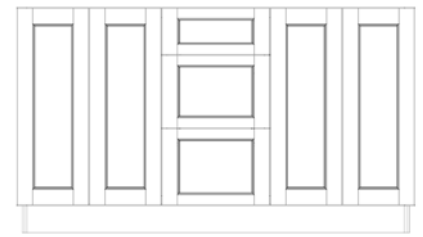
24", 27", 30", 36"



39", 42" (L or R)



48", 54", 60" Single



60", 66", 72" Double

## Notes:

It doesn't get easier than this! Our most traditional vanity, Series G shines in situations with constrained walls or those just looking for classic simplicity. Available with full height doors or partial height with false fronts.

# Series G Options



## Additional Series options:

- Standard height 34- $\frac{1}{2}$ " , depth 21". Inquire about custom sizes.
- Available with matching decorative end panels.
- Available in flush inset and overlay hinge/door configurations.
- Available with attached filler for adjacent wall configurations.
- Available with either full-height doors or false drawer in front of the sink area.
- Note: 39" and 42" models have two drawers only. Top front is not operable to allow for center-sink applications. For offset-sink applications, inquire about adding a functional third drawer.

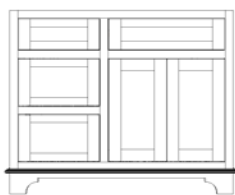
# Harpswell Series



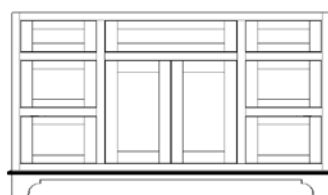
## Size Configurations:



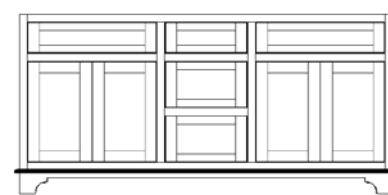
24", 27", 30", 36"



39", 42" (L or R)



48", 54", 60" Single



60", 66", 72" Double

## Notes:

Clean lines and subtle elegance define Harpswell. Choose any door style to accent the look.

# Harpwell Series Options



## Additional Series options:

- Standard height 34-½", depth 21". Inquire about custom sizes.
- Available with attached filler for adjacent wall configurations.
- Available with either full-height doors or false drawer in front of the sink area.
- Note: 39" and 42" models have two drawers only. Top front is not operable to allow for center-sink applications. For offset-sink applications, inquire about adding a functional third drawer.

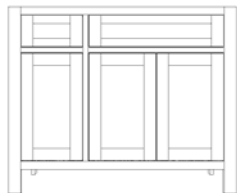
# Freeport Series



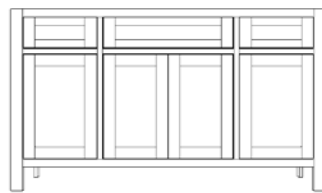
## Size Configurations:



24", 27", 30", 36"



39", 42" (L or R)



48", 54", 60" Single



60", 66", 72" Double

## Notes:

A highly flexible design with open storage. In lieu of drawers typically found in vanity styles, open door sections allow for storage of your larger items.



# Freeport Series Options



## Additional Series options:

- Standard height 34-½", depth 21". Inquire about custom sizes.
- Available with attached filler for adjacent wall configurations.
- Note: 39" and 42" models have two drawers only. Top front is not operable to allow for center-sink applications. For offset-sink applications, inquire about adding a functional third drawer.

# Mirrors



## Available Sizes:

- Small (S): 28" x 35" (approximate)
- Large (L): 46" x 35" (approximate)

## Details:

- Standard sizes include 1/8" flat glass
- Custom sizes available. Please inquire.

Options: Mirror frames available to match the following door styles:



Jefferson



Madison



Hamilton



Adams



Washington



Monroe



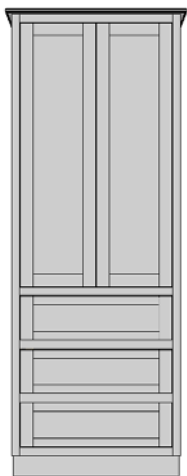
Revere

# Expanded Collection

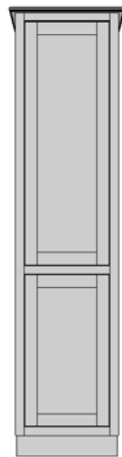
In addition to our core vanity product offering, we offer matching Medicine and Linen cabinets! Contact us for quote and lead time.

**Medicine Cabinets:** Available in sizes 21" x 24" and 30" x 36". Cabinets are surface mount, with a 4" cabinet depth.

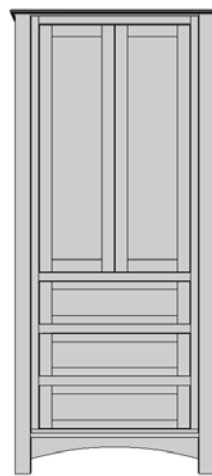
**Linen Cabinets:** Available in single door versions 18", 24" or double door in 30" and 36". Height options include 80", 84", and 90".



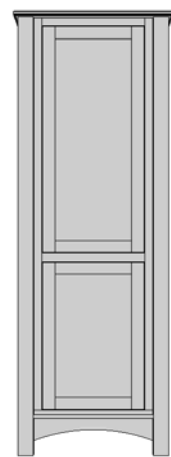
Series G 30"x84"



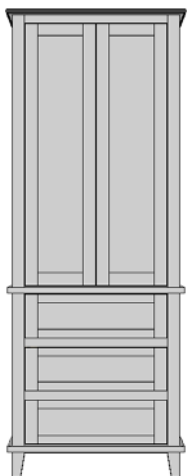
Series G 18"x80"



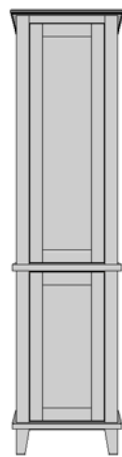
Series A 36"x84"



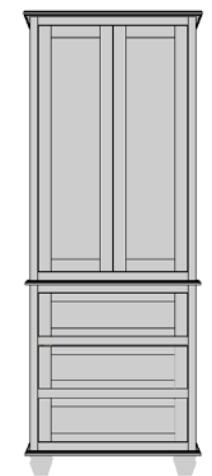
Series A 24"x80"



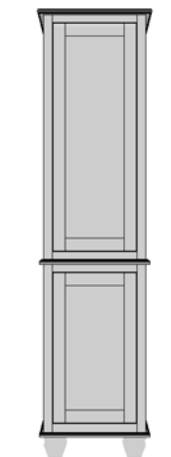
Series B 30"x84"



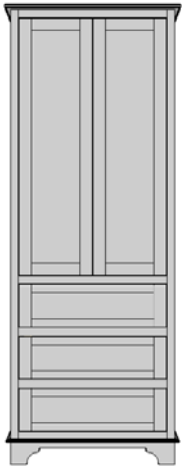
Series B 18"x80"



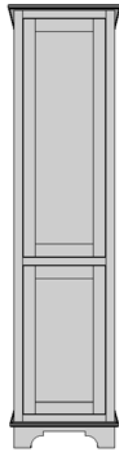
Series D 30"x84"



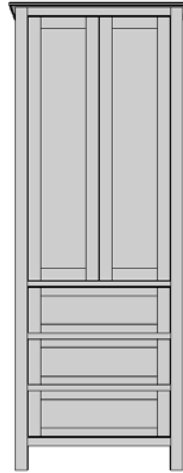
Series D 18"x80"



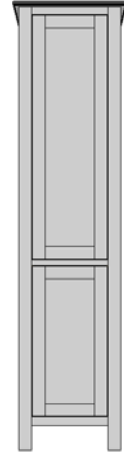
Harpswell 30"x84"



Harpswell 18"x80"



Freeport 30"x84"



Freeport 18"x80"

## Contact us for more...

Our linen and storage cabinet offering is highly flexible. Size, drawer/door combinations, etc. – all your choice to fit your space. Contact us with specific requests for a quote.

# Door Choices

Choose from any of our eight standard door options:



**Note 1:** For Franklin door style, specify horizontal or vertical grain.

**Note 2:** For Revere door style, no edge specification available

## Door Options Continued...

Depending on the style, cabinet doors are available in either overlay, or inset hinge applications:

Overlay vs. Flush Inset:



**Overlay**



**Flush Inset**

# Finishes

## Standard Finish Options:

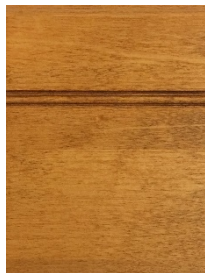
All our furniture is finished by hand in a process that passes between 7 and 12 steps. We use catalyzed lacquer, formulated to withstand the test of time in harsh bathroom environments.

Pick any of our finishes below or come up with your own. We can apply a custom color of your choosing (opaque finishes only) for a modest increase in cost.

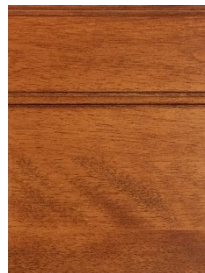
## Maple



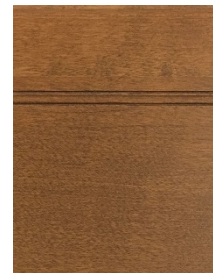
#90M Natural



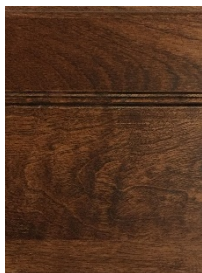
#65M Autumn Gold



#88M Nutmeg



#91M Early American



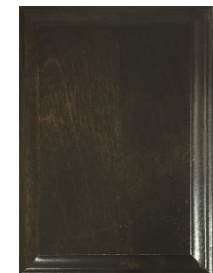
#92M Walnut



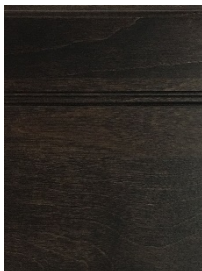
#82M Sandstone



#80M Slate



#81M Driftwood



#85M Nitefall

# Finishes Continued...

## Maple



#70M White



#73M Linen



#71M Oyster



#78M Revere Pewter



#75M Coventry Gray



#89M Whale Gray



#49M Carolina Gull



#35M Vintage Red



Hale Navy



#53M Denim



#84M Black



# Finishes Continued...

## Cherry\*



#90C Natural



#65C Autumn Gold



#81C Driftwood



#85C Nitefall



#88C Nutmeg



#91C Early American



#92C Walnut

## Walnut\*



#90W Natural

**\*Special Order, allow extra time (6-8 weeks)**

# Finishes Continued...

## Rustic Hickory



#90H Natural



#65H Autumn Gold



#80H Slate



#81H Driftwood



#82H Sandstone



#91H Early American



#88H Nutmeg



#92H Walnut



#85H Nitefall

## Custom Color Program:

For a truly one-of-a-kind look, use our custom color program. Select a color from any of your favorite brands (Benjamin Moore, Sherwin Williams, etc.) and we will apply that color to your furniture piece for a modest increase in cost. This is for opaque/solid colors only (not stains). See custom color specification sheet for details.

# The Details

## Product Options:

All styles are available with the following options:

**Door Style:** Choose from any of our eight door styles. All are available in overlay or flush inset.

**Finish:** Choose any of our standard catalyzed lacquers. Or, for a truly custom look, use our custom color program, selecting a color from any major manufacturers offering (Benjamin Moore, Sherwin Williams, etc.).

**Drawers:** Standard drawers are dovetailed 15mm Baltic Birch Plywood. Sides are unfinished with a finished bottom. Premium drawers are 5/8" dovetailed solid wood with fully finished sides and bottom.

**Extended Stiles:** For installations against adjacent walls, choose the extended stile option. Specify left or right and we will either extend the stile by 1" or add a 1" filler (other widths available on request).

## Construction:

**Joinery:** Our structural joinery is always dadoed, never dowelled. Drawer boxes are dovetailed on four corners

**Material:** Virgin solids are used for framing, legs, and other decorative elements. Voidless veneer-core plywood is used for box components to ensure long term performance. Sides are 3/4", backs and bottoms are 1/2".

**Functional Hardware:** Full-access, soft-close undermount drawer slides on all drawers. Soft-close European style hinges on all doors

**Emissions:** Our structural hardwoods and plywoods are always either NAUF (No Added Urea Formaldehyde) or CARB II compliant.

# Shipping and Delivery

## Packaging/Cartoning

All furniture is provided blanket wrapped. This reduces our cost to you, eliminates waste, and reduces damage in transit (it's surprising how little protection cardboard provides hardwood furniture).

If you require your furniture to arrive packaged, please request us to do so.

## Shipping/Freight

We work with each customer on an individual basis to determine most cost-effective means to deliver your product. Please contact us at [Hello@RevFurn.com](mailto:Hello@RevFurn.com) for more information.



# Details and Disclaimers

**One-of-a-kind:** Due to the custom, made-to-order nature of our products, all orders are considered “one-of-a-kind”. All sales are final – returns are not accepted.

**Limited Lifetime Warranty:** We want you to be happy with your furniture for as long as you own it. Accordingly, our products carry a limited lifetime warranty. Please see our detailed warranty section for more details.

**Glazed, Painted, and Stained Finishes:** Our finished sample is a close color representation of what the overall finished product will look like and is not meant to match every element exactly. The artistic nature of the hand-applied finish, along with the unique qualities of natural materials can create an unbalanced or inconsistent look. The differences in the final look from section to section (door, sides, posts, etc.) are part of the design and the art of hand-applied finishes and glazes, combined with the differences created by the natural characteristics of the wood. These differences should be expected.

**Discoloration:** All finishes are susceptible to discoloration due to airborne particles, prolonged exposure to natural or artificial light, and/or moisture. Touch up or replacement items completed after installation may not result in an exact match due to these factors.

**Expansion and Contraction:** Please be aware that wood expands and contracts due to environmental changes in temperature and humidity. Multi-piece cabinet doors are constructed with a small amount of space in the frame groove. This allows the panel to float slightly within the frame, allowing for expansion of the panel without causing the frame to split or crack. The natural process of expansion and contraction can create open joints in the finish. An open joint line related to expansion or contraction is not considered a defect. The finish will still protect the surface, and the structural integrity of the joint will not be affected. Wood may expand and contract differently from piece to piece and even joints within the same piece may behave differently. Some joined wood may not show at any joint lines, others may be slightly visible, while others may display easily visible joint lines. Joint lines may also occur due to repeated impacts from normal everyday use. An exposed open wood joint can be damaged from prolonged exposure to water or heavy moisture. It is essential to wipe off any excess moisture from furniture surfaces as soon as possible.

# Wood Species Details

## Natural Hardwoods – What to expect:

We use the finest, furniture-grade, select hardwood available for our furniture. Because these hardwoods are a product of nature, variations in color and grain are to be expected. Some species of wood have unique grain characteristics that may cause the final finish to look lighter or darker in some areas. Therefore, while your furniture will have the same basic appearance as our samples, they will be unique and perhaps noticeably different.

**Maple** is a strong wood that is primarily off-white in its raw state. However, maple sometimes contains light hues of yellow-brown and pink as well as light tan or reddish-tinged streaks that darken with stain. Typically straight-grained, maple can be wavy or even curly.

**Cherry** is a rich multi-colored hardwood, often used in fine furniture. In its raw state, cherry has pinkish-brown hues with occasional shades of white, green, pink or grey. It may also contain small knots, pin holes and cherry fissures. A cherry fissure is a small crack that occurs naturally in the wood; it will not get bigger over time. Natural or light stains accent the color variations and characteristics in cherry, while dark stains soften its complexity. All cherry wood naturally darkens or “mellows” with age, sometimes significantly depending on its exposure to light and other environmental conditions.

**Hickory** is a dense, strong, open-grained wood that is known for its flowing grain pattern and dramatic color variation. Hickory often contains random pecks, burls and mineral streaks. A single hickory door might vary from light to deep brown when finished in light or natural stains. Darker stains will mildly tone these color variations, but these characteristics will often remain in the final product.

**Walnut** varies in color from nearly white sapwood to chocolate brown heartwood that occasionally has darker streaks. Annular rings are very pronounced on the board face. Limited mineral streaks, pin knots and sapwood may appear. This is a species for anyone who appreciates the “true” natural beauty of wood.

## Wood Grading:

**Rustic:** Rustic grades include some combination of open knots, wormholes, dramatic color contrast, and mineral streaks. These characteristics are expected and preferred as they occur naturally in the material: highly random with no single characteristic (i.e. open knots) as a defining trait.

**Select:** Select grades are chosen for the most uniform color without large knots and only minor defects. Color variation and defects are still to be expected per characteristics typical to the species, but will be minimized in comparison to lower grades.

# Limited Lifetime Warranty

As the purchaser of a Revolution Furnishings product, you have invested in furniture built to the highest standards of workmanship. Your furniture is protected by our limited lifetime workmanship warranty (the "Warranty").

**Who is covered?** This Warranty is extended to the original purchaser only and is not transferable. Revolution Furnishings does not extend this Warranty to subsequent owners of the product.

**What is covered under this Warranty?** Revolution Furnishings warrants that the original purchaser's registered cabinetry will be free from defects of workmanship under normal household use for as long as the original purchaser owns the home in which the product is installed. Specifically, this Warranty applies to the following: cabinet front frames, cabinet doors (for door warpage, see Special Notes below), cabinet back and side panels, shelves, tops and bottoms, drawer fronts and drawer bodies. The hinges and drawer guides used in Revolution Furnishings' products are covered by the warranty by the manufacturer of the hinges and drawer guides.

**What is not covered under this Warranty?** This Warranty does not cover, and Revolution Furnishings will not be responsible for:

- Defects or damage arising from improper or negligent installation, misuse, accidents, alterations (regardless of whether the alteration caused or contributed to the defect), or improper care.
- Cabinetry not maintained or stored in a climate-controlled environment (see Special Notes below).
- Cabinetry that has been exposed to water, extreme high humidity, or low humidity.
- Natural characteristics of wood (see below).
- Stain finishes (see Natural Characteristics of Wood below).
- Normal wear and tear.
- Labor costs, including the costs of any repairs, replacements, or modifications.
- Transportation or shipping costs incurred in connection with this Warranty.

## Natural Characteristics of Wood:

Natural woods, even from trees of the same species, may differ in color, texture and graining. Wood may exhibit subtle changes over time as it ages. Natural and painted finishes on all furniture will at times vary in color tone and grain characteristics. Painted face frames, doors, and other painted parts of the product may eventually have visible cracking around the joint areas. These changes may be accelerated or intensified by sunlight, smoke, household cleaners and other environmental conditions, and such conditions may eventually cause the wood to warp, split or crack. These variations are considered the natural characteristics of the material in relation to their environment and normal wear and tear and are not covered under this Warranty.

## Special Notes:

*Door Warpage.* For a period of **One Year** after purchase, all doors less than 24 ¼" wide and 45" high will be warranted if warpage is greater than 1/8". All doors over 24 ¼" wide and 45" high will be warranted if warpage is greater than ¼". Upon installation, a cabinet may be forced out of square. The door(s) of an out of square cabinet will appear to be warped, when in fact they are not. Please remove all doors and check them on a flat surface for the above stated warpage tolerances before requesting replacement. Note that mortise and tenon doors over 45" high and made as one panel at the customer's request are **excluded** from this Warranty.

*Climate Controlled Environment.* To minimize warpage and moisture expansion of wood products, Revolution Furnishings products should be maintained in a climate controlled environment that avoids extreme temperatures

and extremely high or low humidity conditions. Revolution Furnishings will not warranty product stored or installed in any uncontrolled environment.

**Performance of Warranty:**

If a covered defect occurs, Revolution Furnishings will elect, in its sole discretion, to either repair or replace the defective material or component free of charge. Revolution Furnishings reserves the right to change its product and finish offerings from time to time without notice to its customers. If a warranty claim is filed on a product or finish no longer offered and Revolution Furnishings elects to replace the material or component, Revolution Furnishings will substitute a material or component that it deems to be comparable in look and style and of equal or greater value. Revolution Furnishings does not guarantee that finishes on replacement materials or components will exactly match the finishes of products already installed in your home.

**How to Make a Warranty Claim:**

You must make your warranty claim direct to Revolution Furnishings. Your claim must describe the nature of all the alleged defects. You may email to:

[Revolution Furnishings: support@revfurn.com](mailto:support@revfurn.com)

**Limitations:**

This Warranty is Revolution Furnishings' exclusive express warranty, and Revolution Furnishings disclaims all other express warranties. In no event shall Revolution Furnishings be liable for incidental or consequential damages to the original purchaser or any third party. No dealer or agent of Cedar Crest Cabinetry has any authority to change or enlarge the warranty or enlarge the above warranty or our liability. Some States do not allow the exclusion or limitation of incidental or consequential damages, so the above limitation or exclusion may not apply to you. This warranty gives you specific legal rights, and you may also have other rights which vary from State to State.



## Hand Crafted. Locally. The way it used to be.

*Price + Quality = Value.* Revolution Furnishings is the stubborn company that believes quality should be the most important component of the value equation. As imported furniture products have flooded the market in the last 20 years, our peers have become ever-more distracted by price. Sadly, this has filled homes with inferior quality, questionable materials, and product life-cycles that are far shorter than what our neighbors deserve.

Revolution Furnishings takes pride in delivering our local community products with equal focus on price and quality. We create products that are:

- Made to order. Designed to fit your space, not our catalogs.
- Hand crafted from virgin solid wood and veneers -- never particleboard.
- Hand finished with durable lacquers, designed to stand the test of time in harsh bathroom environments.

## Contact Us

You can find our products at your local Kitchen and Bath dealer, the one with a discerning focus on quality and service. Or contact us to learn more. Our factory is located at:

9050 S Willow Street  
Manchester, NH 03103

Phone: 603.669.9280

Email: [hrlllo@revfurn.com](mailto:hrlllo@revfurn.com)

Web: [www.RevolutionFurnishings.com](http://www.RevolutionFurnishings.com)



*Revolution*



FURNISHINGS  
MADE IN NEW ENGLAND

**Bath Furniture Collection  
Price Book**



# Series A Sales Order Form

Revolution Furnishings, LLC  
 Email: Hello@RevFurn.com  
 Main: (603) 669-9280 Fax: (603) 669-3467  
 9050 S. Willow St, Manchester, NH 03103

Date: \_\_\_\_\_ PO/Job Name: \_\_\_\_\_

*Billing information*

<b>Name:</b> _____	<b>City:</b> _____
<b>Company Name:</b> _____	<b>State:</b> _____ <b>Zip:</b> _____
<b>Address:</b> _____	<b>Phone:</b> _____
<b>Email:</b> _____	<input type="checkbox"/> <i>Factory Pickup</i> <input type="checkbox"/> <i>Deliver Boxed</i> <input type="checkbox"/> <i>Deliver No Box</i>

*Size/Configuration (see cost matrix for base price information):*

**Retail Pricing**

<b>Depth:</b>	<input type="checkbox"/> 21.75" <input type="checkbox"/> 18.75"	<b>Single Bowl:</b>	<input type="checkbox"/> 27" <input type="checkbox"/> 30" <input type="checkbox"/> 36" <input type="checkbox"/> 39" <input type="checkbox"/> 42" <input type="checkbox"/> 48" <input type="checkbox"/> 54" <input type="checkbox"/> 60"		1
		<b>Double Bowl:</b>	<input type="checkbox"/> 60" <input type="checkbox"/> 66" <input type="checkbox"/> 72"	Base Price, apply upcharges to this --->	\$ <span style="border: 1px solid blue; display: inline-block; width: 80px; height: 20px; vertical-align: middle;"></span>

*Configuration Details*

<b>Door Configuration:</b>	<input type="checkbox"/> Full Height Under Sink <input type="checkbox"/> False Sink Front with Partial Height Doors	2
<b>Drawer Configuration (39" and 42" only):</b>	<input type="checkbox"/> Drawer Stack Right <input type="checkbox"/> Drawer Stack Left	\$ <u>No Charge</u>

*Doors*

<b>Door Style:</b> _____	<b>Drawer Style:</b>	<input type="checkbox"/> Five Piece <input type="checkbox"/> Slab	\$ <u>No Charge</u> 3
--------------------------	----------------------	---	-----------------------

*Finish Details*

<b>Species:</b>	<input type="checkbox"/> Maple <input type="checkbox"/> Cherry <input type="checkbox"/> Rustic Hickory <input type="checkbox"/> Walnut		4
<b>Finish Color:</b>	<input type="checkbox"/> Standard: _____ <input type="checkbox"/> Custom (See Details Sheet - <i>add ___%</i> )	\$ _____	

**Notes:** \_\_\_\_\_

**Vanity Subtotal:** \$ \_\_\_\_\_  
**Cost Multiplier:** \_\_\_\_\_  
**Vanity Total:** \_\_\_\_\_  
**Extras (See Notes):** \_\_\_\_\_  
**Total Cost:** \$ \_\_\_\_\_



# Series B Sales Order Form

Revolution Furnishings, LLC  
 Email: Hello@RevFurn.com  
 Main: (603) 669-9280 Fax: (603) 669-3467  
 9050 S. Willow St, Manchester, NH 03103

Date: \_\_\_\_\_ PO/Job Name: \_\_\_\_\_

*Billing information*

Name: _____	City: _____	
Company Name: _____	State: _____	Zip: _____
Address: _____	Phone: _____	Fax: _____
Email: _____	<input type="checkbox"/> Factory Pickup <input type="checkbox"/> Deliver Boxed <input type="checkbox"/> Deliver No Box	

*Size/Configuration (see cost matrix for base price information):*

**Retail Pricing**

Depth:	<input type="checkbox"/> 21"	Single Bowl:	<input type="checkbox"/> 24"	<input type="checkbox"/> 27"	<input type="checkbox"/> 30"	<input type="checkbox"/> 36"	<input type="checkbox"/> 39"	<input type="checkbox"/> 42"	<input type="checkbox"/> 48"	<input type="checkbox"/> 54"	<input type="checkbox"/> 60"	1
	<input type="checkbox"/> 18"	Double Bowl:	<input type="checkbox"/> 60"	<input type="checkbox"/> 66"	<input type="checkbox"/> 72"	Base Price, apply upcharges to this --->					\$	

*Configuration Details*

Drawer Configuration (39" and 42" only):	<input type="checkbox"/> Drawer Stack Right	<input type="checkbox"/> Drawer Stack Left	\$ <u>No Charge</u>	2
--	---	--	---------------------	---

*Doors*

Door Style: _____	Drawer Style:	<input type="checkbox"/> Five Piece	<input type="checkbox"/> Slab	\$ <u>No Charge</u>	3
-------------------	---------------	-------------------------------------	-------------------------------	---------------------	---

*Series B Under-Sink Specification*

<input type="checkbox"/> <b>Standard</b> - Faux drawers, hinged as a door (open under-sink).	<input type="checkbox"/> Hinge Left	<input type="checkbox"/> Hinge Right	4
<input type="checkbox"/> <b>Option</b> - Two functional U-shaped drawers, see catalog ( <i>add \$690 for each under-sink area</i> )			\$ _____

*Finish Details*

Species:	<input type="checkbox"/> Maple	<input type="checkbox"/> Cherry	<input type="checkbox"/> Rustic Hickory	<input type="checkbox"/> Walnut		5
Finish Color:	<input type="checkbox"/> Standard: _____	<input type="checkbox"/> Custom (See Details Sheet - <i>add ___%</i> )				\$ _____

*Options/Accessories:*

Attached filler (2"):	Qty: _____	<input type="checkbox"/> Yes-LEFT ( <i>add \$75</i> )	<input type="checkbox"/> Yes-RIGHT ( <i>add \$75</i> )		6
-----------------------	------------	---	--	--	---

Notes: \_\_\_\_\_

**Vanity Subtotal:** \$ \_\_\_\_\_

Cost Multiplier: \_\_\_\_\_

Vanity Total: \_\_\_\_\_

**Extras (See Notes):** \_\_\_\_\_

**Total Cost:** \$ \_\_\_\_\_



# Series C Sales Order Form

Revolution Furnishings, LLC  
 Email: Hello@RevFurn.com  
 Main: (603) 669-9280 Fax: (603) 669-3467  
 9050 S. Willow St, Manchester, NH 03103

Date: \_\_\_\_\_ PO/Job Name: \_\_\_\_\_

*Billing information*

Name: _____	City: _____	
Company Name: _____	State: _____	Zip: _____
Address: _____	Phone: _____	Fax: _____
Email: _____	<input type="checkbox"/> Factory Pickup <input type="checkbox"/> Deliver Boxed <input type="checkbox"/> Deliver No Box	

*Size/Configuration (see cost matrix for base price information):*

**Retail Pricing**

Depth: <input type="checkbox"/> 21" <input type="checkbox"/> 18"	Single Bowl: <input type="checkbox"/> 24" <input type="checkbox"/> 27" <input type="checkbox"/> 30" <input type="checkbox"/> 36" <input type="checkbox"/> 39" <input type="checkbox"/> 42" <input type="checkbox"/> 48" <input type="checkbox"/> 54" <input type="checkbox"/> 60"	Double Bowl: <input type="checkbox"/> 60" <input type="checkbox"/> 66" <input type="checkbox"/> 72"	Base Price, apply upcharges to this ---> \$ <span style="border: 1px solid black; padding: 2px;"> </span>	1
--	---	---	---	---

*Configuration Details*

Door Configuration: <input type="checkbox"/> Full Height Under Sink <input type="checkbox"/> False Sink Front with Partial Height Doors	2
Drawer Configuration (39" and 42" only): <input type="checkbox"/> Drawer Stack Right <input type="checkbox"/> Drawer Stack Left	\$ No Charge

*Doors*

Door Style: _____	Drawer Style: <input type="checkbox"/> Five Piece <input type="checkbox"/> Slab	\$ No Charge	3
-------------------	---	--------------	---

*Finish Details*

Species: <input type="checkbox"/> Maple <input type="checkbox"/> Cherry <input type="checkbox"/> Rustic Hickory <input type="checkbox"/> Walnut	5
Finish Color: <input type="checkbox"/> Standard: _____ <input type="checkbox"/> Custom (See Details Sheet - add ___%)	\$ _____

*Options/Accessories:*

Attached filler (2"): _____	Qty: _____	<input type="checkbox"/> Yes-LEFT (add \$75) <input type="checkbox"/> Yes-RIGHT (add \$75)	\$ _____	6
-----------------------------	------------	--	----------	---

Notes: \_\_\_\_\_

**Vanity Subtotal:** \$ \_\_\_\_\_

Cost Multiplier: \_\_\_\_\_

Vanity Total: \_\_\_\_\_

**Extras (See Notes):** \_\_\_\_\_

**Total Cost:** \$ \_\_\_\_\_



# Series D Sales Order Form

Revolution Furnishings, LLC  
 Email: Hello@RevFurn.com  
 Main: (603) 669-9280 Fax: (603) 669-3467  
 9050 S. Willow St, Manchester, NH 03103

Date: \_\_\_\_\_ PO/Job Name: \_\_\_\_\_

*Billing information*

Name: _____	City: _____
Company Name: _____	State: _____ Zip: _____
Address: _____	Phone: _____ Fax: _____
Email: _____	<input type="checkbox"/> Factory Pickup <input type="checkbox"/> Deliver Boxed <input type="checkbox"/> Deliver No Box

*Size/Configuration (see cost matrix for base price information):*

**Retail Pricing**

Depth:	<input type="checkbox"/> 21"	Single Bowl:	<input type="checkbox"/> 24"	<input type="checkbox"/> 27"	<input type="checkbox"/> 30"	<input type="checkbox"/> 36"	<input type="checkbox"/> 39"	<input type="checkbox"/> 42"	<input type="checkbox"/> 48"	<input type="checkbox"/> 54"	<input type="checkbox"/> 60"	1
	<input type="checkbox"/> 18"	Double Bowl:	<input type="checkbox"/> 60"	<input type="checkbox"/> 66"	<input type="checkbox"/> 72"	Base Price, apply upcharges to this --->						\$ _____

*Configuration Details*

Drawer Configuration (39" and 42" only):	<input type="checkbox"/> Drawer Stack Right	<input type="checkbox"/> Drawer Stack Left	\$ <u>No Charge</u>	2
--	---	--	---------------------	---

*Doors*

Door Style: _____	Drawer Style:	<input type="checkbox"/> Five Piece	<input type="checkbox"/> Slab	\$ <u>No Charge</u>	3
-------------------	---------------	-------------------------------------	-------------------------------	---------------------	---

*Finish Details*

Species:	<input type="checkbox"/> Maple	<input type="checkbox"/> Cherry	<input type="checkbox"/> Rustic Hickory	<input type="checkbox"/> Walnut		4
Finish Color:	<input type="checkbox"/> Standard: _____	<input type="checkbox"/> Custom (See Details Sheet - add ___%)	\$ _____			

Notes: \_\_\_\_\_

Vanity Subtotal: \$ \_\_\_\_\_

Cost Multiplier: \_\_\_\_\_

Vanity Total: \_\_\_\_\_

Extras (See Notes): \_\_\_\_\_

**Total Cost:** \$ \_\_\_\_\_



## Series E Sales Order Form

Revolution Furnishings, LLC  
Email: Hello@RevFurn.com  
Main: (603) 669-9280 Fax: (603) 669-3467  
9050 S. Willow St, Manchester, NH 03103

Date: \_\_\_\_\_ PO/Job Name: \_\_\_\_\_

### Billing information

Name: _____	City: _____
Company Name: _____	State: _____ Zip: _____
Address: _____	Phone: _____ Fax: _____
Email: _____	<input type="checkbox"/> Factory Pickup <input type="checkbox"/> Deliver Boxed <input type="checkbox"/> Deliver No Box

### Size/Configuration (see cost matrix for base price information):

### Retail Pricing

Depth: <input type="checkbox"/> 22" <input type="checkbox"/> 19"	Single Bowl: <input type="checkbox"/> 27" <input type="checkbox"/> 30" <input type="checkbox"/> 36" <input type="checkbox"/> 39" <input type="checkbox"/> 42" <input type="checkbox"/> 48" <input type="checkbox"/> 54" <input type="checkbox"/> 60"	1
Double Bowl: <input type="checkbox"/> 60" <input type="checkbox"/> 66" <input type="checkbox"/> 72"	Base Price, apply upcharges to this ---->	\$ <input type="text"/>

### Configuration Details

Leg Style: <input type="checkbox"/> Square <input type="checkbox"/> Shaker	2
Drawer Configuration (39" and 42" only): <input type="checkbox"/> Drawer Stack Right <input type="checkbox"/> Drawer Stack Left	\$ No Charge

### Doors

Door Style: _____	Drawer Style: <input type="checkbox"/> Five Piece <input type="checkbox"/> Slab	\$ No Charge	3
-------------------	---	--------------	---

### Finish Details

Species: <input type="checkbox"/> Maple <input type="checkbox"/> Cherry <input type="checkbox"/> Rustic Hickory <input type="checkbox"/> Walnut	4
Finish Color: <input type="checkbox"/> Standard: _____ <input type="checkbox"/> Custom (See Details Sheet - add ___%)	\$ _____

Notes: \_\_\_\_\_

Vanity Subtotal:	\$ _____
Cost Multiplier:	_____
Vanity Total:	_____
Extras (See Notes):	_____
Total Cost:	\$ _____



# Series F Sales Order Form

Revolution Furnishings, LLC  
 Email: Hello@RevFurn.com  
 Main: (603) 669-9280 Fax: (603) 669-3467  
 9050 S. Willow St, Manchester, NH 03103

Date: \_\_\_\_\_ PO/Job Name: \_\_\_\_\_

*Billing information*

Name: _____	City: _____	
Company Name: _____	State: _____	Zip: _____
Address: _____	Phone: _____	Fax: _____
Email: _____	<input type="checkbox"/> Factory Pickup <input type="checkbox"/> Deliver Boxed <input type="checkbox"/> Deliver No Box	

*Size/Configuration (see cost matrix for base price information):*

**Retail Pricing**

Depth: <input type="checkbox"/> 21" <input type="checkbox"/> 18"	Single Bowl: <input type="checkbox"/> 24" <input type="checkbox"/> 27" <input type="checkbox"/> 30" <input type="checkbox"/> 36" <input type="checkbox"/> 39" <input type="checkbox"/> 42" <input type="checkbox"/> 48" <input type="checkbox"/> 54" <input type="checkbox"/> 60"	Double Bowl: <input type="checkbox"/> 60" <input type="checkbox"/> 66" <input type="checkbox"/> 72"	Base Price, apply upcharges to this --> \$ <span style="border: 1px solid black; padding: 2px;"> </span>	1
--	---	---	--	---

*Configuration Details*

Cabinet Style:	<input type="checkbox"/> Standard (30" height, including feet) <input type="checkbox"/> Floating (18" height)	\$ No Charge	2
----------------	---	--------------	---

*Doors*

Hinge Style: <input type="checkbox"/> Overlay (Series F full overlay only)			3
Door Style: _____	Door Edge: <input type="checkbox"/> Standard <input type="checkbox"/> Edge B <input type="checkbox"/> Edge C		
Special: For Franklin Door, specify grain direction (will match sides):	<input type="checkbox"/> Vertical <input type="checkbox"/> Horizontal		
Deco End Panels: <input type="checkbox"/> None <input type="checkbox"/> Right Side (add \$480) <input type="checkbox"/> Left Side (add \$480)			\$ _____

*Finish Details*

Species: <input type="checkbox"/> Maple <input type="checkbox"/> Cherry <input type="checkbox"/> Rustic Hickory <input type="checkbox"/> Walnut			4
Finish Color: <input type="checkbox"/> Standard: _____ <input type="checkbox"/> Custom (See Details Sheet - add ___%)			\$ _____

*Options/Accessories:*

Attached filler (2"):	Qty: _____	<input type="checkbox"/> Yes-LEFT (add \$75) <input type="checkbox"/> Yes-RIGHT (add \$75)	\$ _____	5
Hanging system for floating vanities:	<input type="checkbox"/> Yes (add \$405)		\$ _____	

Notes: \_\_\_\_\_

Vanity Subtotal: \$ \_\_\_\_\_

Cost Multiplier: \_\_\_\_\_

Vanity Total: \_\_\_\_\_

Extras (See Notes): \_\_\_\_\_

**Total Cost:** \$ \_\_\_\_\_





# Series G Sales Order Form

Revolution Furnishings, LLC  
 Email: Hello@RevFurn.com  
 Main: (603) 669-9280 Fax: (603) 669-3467  
 9050 S. Willow St, Manchester, NH 03103

Date: \_\_\_\_\_ PO/Job Name: \_\_\_\_\_

*Billing information*

Name: _____	City: _____
Company Name: _____	State: _____ Zip: _____
Address: _____	Phone: _____ Fax: _____
Email: _____	<input type="checkbox"/> Factory Pickup <input type="checkbox"/> Deliver Boxed <input type="checkbox"/> Deliver No Box

*Size/Configuration (see cost matrix for base price information):*

**Retail Pricing**

Depth: <input type="checkbox"/> 21" <input type="checkbox"/> 18"	Single Bowl: <input type="checkbox"/> 24" <input type="checkbox"/> 27" <input type="checkbox"/> 30" <input type="checkbox"/> 36" <input type="checkbox"/> 39" <input type="checkbox"/> 42" <input type="checkbox"/> 48" <input type="checkbox"/> 54" <input type="checkbox"/> 60"	Double Bowl: <input type="checkbox"/> 60" <input type="checkbox"/> 66" <input type="checkbox"/> 72"	Base Price, apply upcharges to this ---> \$ <span style="border: 1px solid black; padding: 2px;"> </span>	1
--	---	---	---	---

*Configuration Details*

Door Configuration:	<input type="checkbox"/> Full Height Under Sink <input type="checkbox"/> False Sink Front with Partial Height Doors	2
Drawer Configuration (39" and 42" only):	<input type="checkbox"/> Drawer Stack Right <input type="checkbox"/> Drawer Stack Left	\$ <u>No Charge</u>

*Doors*

Hinge Style: <input type="checkbox"/> Overlay <input type="checkbox"/> Flush Inset (add 10%)	Drawer Style: <input type="checkbox"/> Five Piece <input type="checkbox"/> Slab	\$ _____ 3
Door Style: _____		
Deco End Panels: <input type="checkbox"/> None <input type="checkbox"/> Right Side (add \$480) <input type="checkbox"/> Left Side (add \$480)		\$ _____

*Finish Details*

Species: <input type="checkbox"/> Maple <input type="checkbox"/> Cherry <input type="checkbox"/> Rustic Hickory <input type="checkbox"/> Walnut		4
Finish Color: <input type="checkbox"/> Standard: _____ <input type="checkbox"/> Custom (See Details Sheet - add ___%)		\$ _____

*Options/Accessories:*

Attached filler (2"):	Qty: _____ <input type="checkbox"/> Yes-LEFT (add \$75) <input type="checkbox"/> Yes-RIGHT (add \$75)	\$ _____ 5
-----------------------	---	------------

Notes: \_\_\_\_\_

Vanity Subtotal: \$ \_\_\_\_\_  
 Cost Multiplier: \_\_\_\_\_  
 Vanity Total: \_\_\_\_\_  
 Extras (See Notes): \_\_\_\_\_  
 Total Cost: \$ \_\_\_\_\_



# Harpwell Sales Order Form

Revolution Furnishings, LLC  
 Email: Hello@RevFurn.com  
 Main: (603) 669-9280 Fax: (603) 669-3467  
 9050 S. Willow St, Manchester, NH 03103

Date: \_\_\_\_\_ PO/Job Name: \_\_\_\_\_

*Billing information*

<b>Name:</b> _____	<b>City:</b> _____
<b>Company Name:</b> _____	<b>State:</b> _____ <b>Zip:</b> _____
<b>Address:</b> _____	<b>Phone:</b> _____ <b>Fax:</b> _____
<b>Email:</b> _____	<input type="checkbox"/> <i>Factory Pickup</i> <input type="checkbox"/> <i>Deliver Boxed</i> <input type="checkbox"/> <i>Deliver No Box</i>

*Size/Configuration (see cost matrix for base price information):*

**Retail Pricing**

<b>Depth:</b> <input type="checkbox"/> 21" <input type="checkbox"/> 18"	<b>Single Bowl:</b> <input type="checkbox"/> 24" <input type="checkbox"/> 27" <input type="checkbox"/> 30" <input type="checkbox"/> 36" <input type="checkbox"/> 39" <input type="checkbox"/> 42" <input type="checkbox"/> 48" <input type="checkbox"/> 54" <input type="checkbox"/> 60"	<b>Double Bowl:</b> <input type="checkbox"/> 60" <input type="checkbox"/> 66" <input type="checkbox"/> 72"	Base Price, apply upcharges to this ---> \$ <span style="border: 1px solid black; padding: 2px;"> </span>	1
---	--	--	---	---

*Configuration Details*

<b>Door Configuration:</b> <input type="checkbox"/> Full Height Under Sink <input type="checkbox"/> False Sink Front with Partial Height Doors	2
<b>Drawer Configuration (39" and 42" only):</b> <input type="checkbox"/> Drawer Stack Right <input type="checkbox"/> Drawer Stack Left	\$ No Charge

*Doors*

<b>Door Style:</b> _____	<b>Drawer Style:</b> Five Piece Slab	\$ No Charge	3
--------------------------	--------------------------------------	--------------	---

*Finish Details*

<b>Species:</b> <input type="checkbox"/> Maple <input type="checkbox"/> Cherry <input type="checkbox"/> Rustic Hickory <input type="checkbox"/> Walnut	4
<b>Finish Color:</b> <input type="checkbox"/> Standard: _____ <input type="checkbox"/> Custom (See Details Sheet - add ___%)	\$ _____

*Options/Accessories:*

<b>Attached filler (2"):</b> Qty: _____	<input type="checkbox"/> Yes-LEFT (add \$75) <input type="checkbox"/> Yes-RIGHT (add \$75)	\$ _____	6
---	--	----------	---

**Notes:** \_\_\_\_\_

**Vanity Subtotal:** \$ \_\_\_\_\_  
**Cost Multiplier:** \_\_\_\_\_  
**Vanity Total:** \_\_\_\_\_  
**Extras (See Notes):** \_\_\_\_\_  
**Total Cost:** \$ \_\_\_\_\_



# Freeport Sales Order Form

Revolution Furnishings, LLC  
 Email: Hello@RevFurn.com  
 Main: (603) 669-9280 Fax: (603) 669-3467  
 9050 S. Willow St, Manchester, NH 03103

Date: \_\_\_\_\_ PO/Job Name: \_\_\_\_\_

*Billing information*

Name: _____	City: _____
Company Name: _____	State: _____ Zip: _____
Address: _____	Phone: _____ Fax: _____
Email: _____	<input type="checkbox"/> Factory Pickup <input type="checkbox"/> Deliver Boxed <input type="checkbox"/> Deliver No Box

*Size/Configuration (see cost matrix for base price information):*

**Retail Pricing**

Depth: <input type="checkbox"/> 21" <input type="checkbox"/> 18"	Single Bowl: <input type="checkbox"/> 24" <input type="checkbox"/> 27" <input type="checkbox"/> 30" <input type="checkbox"/> 36" <input type="checkbox"/> 39" <input type="checkbox"/> 42" <input type="checkbox"/> 48" <input type="checkbox"/> 54" <input type="checkbox"/> 60"	Double Bowl: <input type="checkbox"/> 60" <input type="checkbox"/> 66" <input type="checkbox"/> 72"	Base Price, apply upcharges to this ---> \$ <span style="border: 1px solid black; padding: 2px;"> </span>	1
--	---	---	---	---

*Configuration Details*

Drawer Configuration (39" and 42" only):	<input type="checkbox"/> Drawer/Door Right <input type="checkbox"/> Drawer/Door Stack Left	\$ <u>No Charge</u>	2
--	--	---------------------	---

*Doors*

Door Style: _____	Drawer Style: <input type="checkbox"/> Five Piece <input type="checkbox"/> Slab	\$ <u>No Charge</u>	3
-------------------	---	---------------------	---

*Finish Details*

Species: <input type="checkbox"/> Maple <input type="checkbox"/> Cherry <input type="checkbox"/> Rustic Hickory <input type="checkbox"/> Walnut		4
Finish Color: <input type="checkbox"/> Standard: _____ <input type="checkbox"/> Custom (See Details Sheet - add ___%)	\$ _____	

*Options/Accessories:*

Attached filler (2"):	Qty: _____	<input type="checkbox"/> Yes-LEFT (add \$75) <input type="checkbox"/> Yes-RIGHT (add \$75)	\$ _____	6
-----------------------	------------	--	----------	---

Notes: \_\_\_\_\_

Vanity Subtotal: \$ \_\_\_\_\_  
 Cost Multiplier: \_\_\_\_\_  
 Vanity Total: \_\_\_\_\_  
 Extras (See Notes): \_\_\_\_\_  
 Total Cost: \$ \_\_\_\_\_



# Mirror Order Form

Revolution Furnishings, LLC  
Email: Hello@RevFurn.com  
Main: (603) 669-9280 Fax: (603) 669-3467  
9050 S. Willow St, Manchester, NH 03103

Date: \_\_\_\_\_ Dealer PO/Job Name: \_\_\_\_\_

### Billing information

<b>Name:</b> _____	<b>City:</b> _____
<b>Company Name:</b> _____	<b>State:</b> _____ <b>Zip:</b> _____
<b>Address:</b> _____	<b>Phone:</b> _____ <b>Fax:</b> _____
<b>Email:</b> _____	<input type="checkbox"/> <i>Factory Pickup</i> <input type="checkbox"/> <i>Deliver Boxed</i> <input type="checkbox"/> <i>Deliver No Box</i>

### Mirrors

<b>Species:</b> <input type="checkbox"/> Maple <input type="checkbox"/> Cherry <input type="checkbox"/> Rustic Hickory <input type="checkbox"/> Walnut	1
<b>Premium Door Matched Styles:</b>	
<input type="checkbox"/> Adams <input type="checkbox"/> Hamilton <input type="checkbox"/> Jefferson <input type="checkbox"/> Madison <input type="checkbox"/> Morgan <input type="checkbox"/> Revere <input type="checkbox"/> Washington	
Base Price, apply upcharges to this --->	\$ <input style="width: 100px;" type="text"/>

### Finish Details

<b>Species:</b> <input type="checkbox"/> Maple <input type="checkbox"/> Cherry <input type="checkbox"/> Rustic Hickory <input type="checkbox"/> Walnut	2
<b>Finish Color:</b> <input type="checkbox"/> Standard: _____ <input type="checkbox"/> Custom (See Details Sheet - <i>add ___%</i> )	\$ _____

**Notes:** \_\_\_\_\_

**Vanity Subtotal:** \$ \_\_\_\_\_

Cost Multiplier: \_\_\_\_\_

Vanity Total: \_\_\_\_\_

**Extras (See Notes):** \_\_\_\_\_

**Total Cost:** \$ \_\_\_\_\_