

DePlaque

Guide Right™

Bending Tool

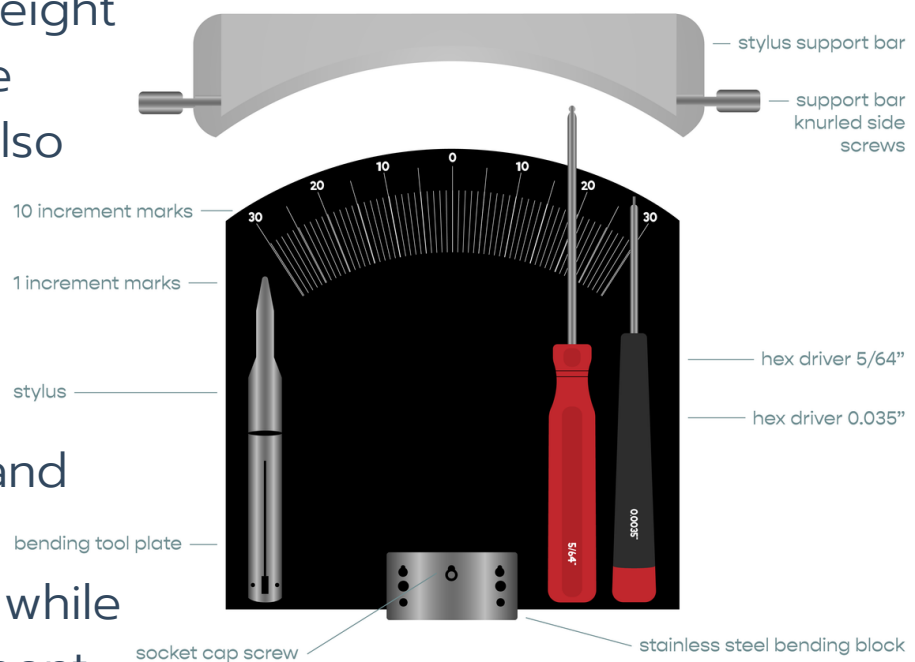
Protocol

Instructions for Use

www.DePlaque.com

Components

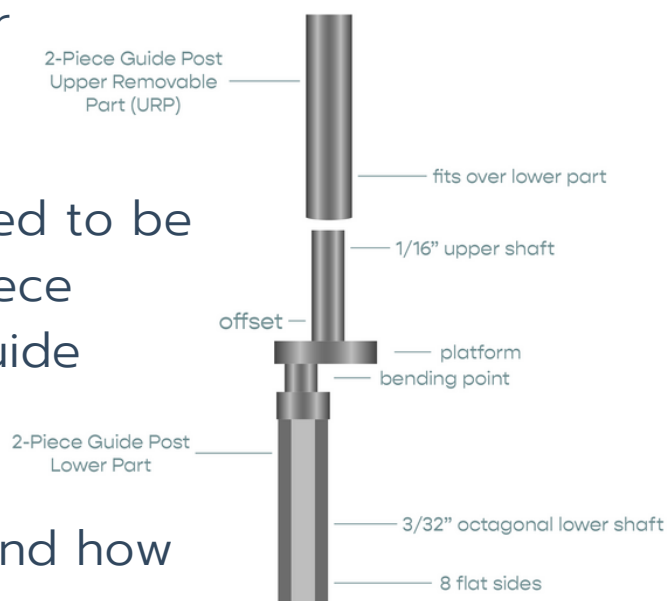
- **Bending Tool Plate:** calibrated in 2° increment markings to aid in positioning accuracy of the Guide Post bend.
- **Stainless Steel Bending Block:** designed with a hole in the top, used to position the lower, smaller end of the eight sided Guide Post into. Also features a **Socket Cap Screw (in center)** to tighten and secure the **Guide Post** while it is being bent.
- **Hex Driver 5/64":** used to tighten and loosen the **Socket Cap Screw** against one flat side of the **Guide Post**, in order to prevent rotating during the bend.
- **Hex Driver 0.035":** used to tighten and loosen the **Stylus Set Screw** against one of the four flat sides of the **Guide Post**, to secure it in the **Stylus**.



Components

- **Support Bar:** moved down to support the Stylus when a second correction or bend is made, while the Guide Post is rotated 90° and lifted from the surface of the plate, to register the Stylus point back to 0°.
- **Stylus:** features the **Set Screw** and a Guide Post slot, and is engraved with the major and minor anatomical directions.
 - **four major directions:** *mesial, distal, buccal, and lingual*, are indicated with vertical engraved lines to position and rotate the Guide Post for bends 90° apart.
 - **four minor directions:** *mesio-buccal, disto-buccal, mesio-lingual and disto-lingual*, are indicated with small circular marks 45° from the vertical major direction lines.

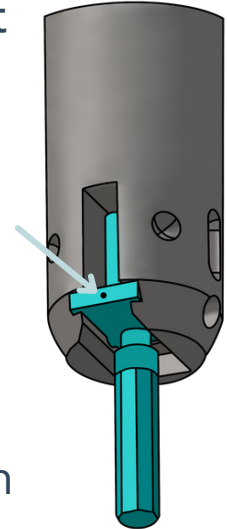
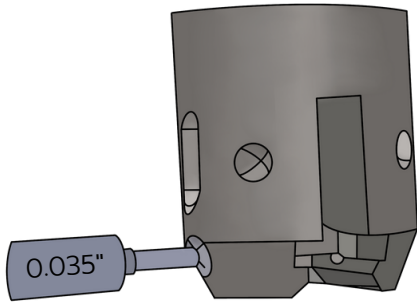
- **2-Piece Guide Post:**
The **Stylus** is designed to be used to bend a 2-Piece Straight or Offset Guide Post, therefore the following steps include the design and how it fits into the **Stylus**.



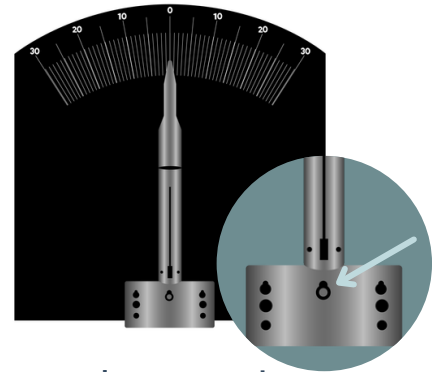
First Bend

1. Position a 2-Piece Straight or Offset Guide Post in the Stylus Slot with the Registration Dot (located on post platform) *visible*.

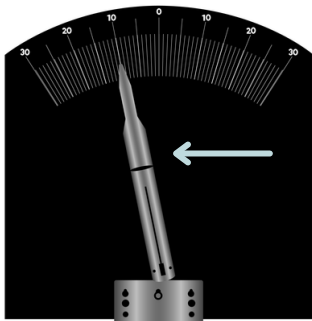
2. Using the 0.035" Hex Driver, tighten the Stylus Set Screw against one of the four flat surfaces of the rectangular plate of the Guide Post, to secure it in the Stylus.



3. Locate the two holes in the top of the Bending Block.
4. Place lower half of the Guide Post into the hole closest to the surface of the Bending Tool Plate. The remaining hole is only used for *very large 4.0 - 5.0mm Offset Guide Posts*.



5. Tighten the Socket Cap Screw with the 5/64" Hex Driver to secure the Guide Post in the Bending Block.

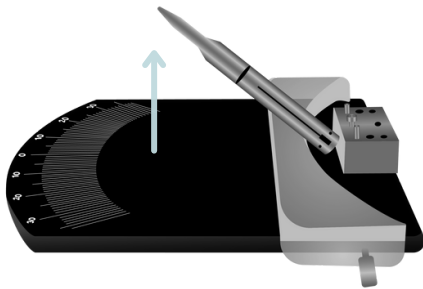
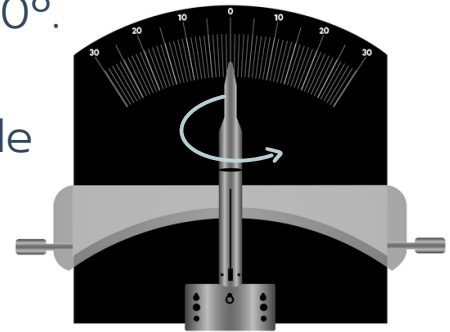


6. Make the first bend by pressing the Stylus to the right or left, toward the desired Degree Mark.

Second Bend

7. Loosen the **Socket Cap Screw** with the **5/64" Hex Driver** and rotate the **Guide Post** 90°, up and away from the surface of the **Bending Tool Plate**, to register the **Stylus** point back to 0°.

8. Slide the **Stylus Support Bar** down behind the **Stylus** and **Guide Post**, maintaining the angle of the first bend while the second bend is made.



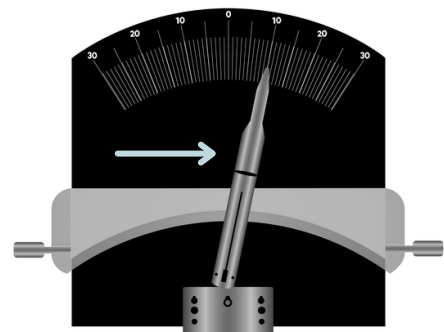
9. Tighten the **Support Bar Side Screws** with your fingers and retighten the **Socket Cap Screw** with the **5/64" Hex Driver** before making the second bend.

10. Make the second bend in either direction indicated by the cone beam evaluation.

11. Loosen the **Socket Cap Screw** with the **5/64" Hex Driver**.

12. Remove **Stylus** with the **Guide Post** from the **Bending Block**.

13. Loosen the **Stylus Set Screw** on the **Stylus** with the **0.035" Hex Driver** to remove the corrected **Guide Post**.



14. Place the **Guide Post** back in the patient cast, verifying that it is oriented correctly. Mark the buccal surface of the **Guide Post** with a felt tip pen, and proceed with the surgical guide fabrication.

Bend Illustration



2-Piece Offset Guide Post, before and after bend

Additional Information

www.DePlaque.com

(585) 924-3190
customerservice@deplaque.com