

WiFi Camera

User Manual



Download APP

As Wechat restriction, please use other QR code scanning tools or browsers to scan

Dear user, thanks for buying our products, please read the manual carefully and keep it for future reference

1

1. Device working mode - cognition and switching

1.1 Device working mode - cognition

Mode 1: Wireless remote connection mode. In this mode, support remote monitoring without distance limitation. Premise is that there is wifi and wifi can be used normally to provide network support for the camera.

Mode 2: No network viewing mode (In this mode, you do not need to register and log in) This mode does not require a WiFi network, you can choose no network to view. The working principle is that the camera sends out a WiFi hotspot, then the mobile phone connects WiFi hotspot of the camera, so that the short-distance mobile phone and the camera are directly connected to view.

1.2 Definition of red indicator light (Please carefully understand this definition to configure the camera)

- ① The red indicator light flashes slowly to indicate the default factory setting status. (Hereinafter referred to as red light slow flashing state)
- ② The red indicator light flashes quickly to indicate the device hotspot connection status. (Hereinafter referred to as red light quick flashing state)

1.3 How to switch the indicator status:

The camera defaults to (red light slow flashing state), if you want to switch to (red light quick flashing state), only need to long press the reset button for 3 seconds, if need to return (red light slow flashing state), long press the reset button again for 3 seconds, switch mode to replace back and forth.

2

Tips: Where is the indicator light? Please refer to the product diagram to find the indicator position.

Where is the reset button? Please refer to the product diagram to find the reset button position.

1. APP download

- ① Download APP on the website (360eyes.club)
- ② Scan QR code on the user manual to download APP
- ③ Directly search: Android mobile system download way: Search and install 360eyeS in Google Play Store; IOS mobile system download way: Search and install 360eyeS in APP Store

Tip: Android system supports version 4.1 and above IOS system supports version 9.2 and above

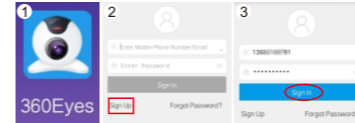
2. Register and download APP

User register: Enter the login interface after installation, register and then login:

- ① Open 360eyes APP
- ② Click "Register", fill in the registration information, complete registration

3

- ③ Enter account and password, click login, enter the main interface after login



Tip: Only support email registration

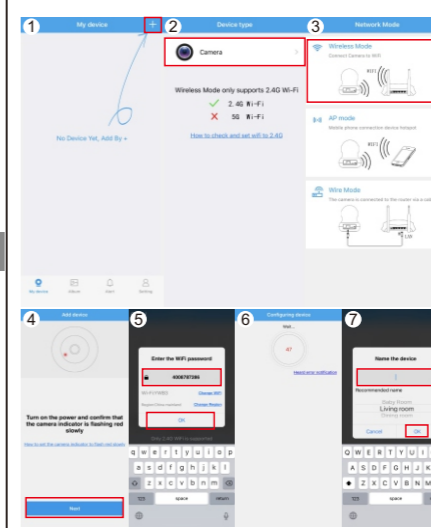
Wireless remote connection mode

This mode provides 3 ways to add (1. Wireless Mode/ 2. AP mode / 3 Wire Mode) We recommend to use the "Wireless Mode", operation is easy; if connection failed, then select "AP mode" to connect; in the case of WiFi signal instability, we recommend to use "wire mode" (only support the camera with LAN port)

Method 1: Smart wireless mode:

- ① Click the plus symbol "+" on the upper right corner
- ② Click "Camera"
- ③ Choose "Wireless Mode"
- ④ Confirming the red indicator light flashing slowly, if yes - next step; no - refer to 1.3
- ⑤ Enter the WiFi password, then click "next"
- ⑥ Waiting to configure the camera
- ⑦ After connecting successfully, name the camera, finish the addition

4

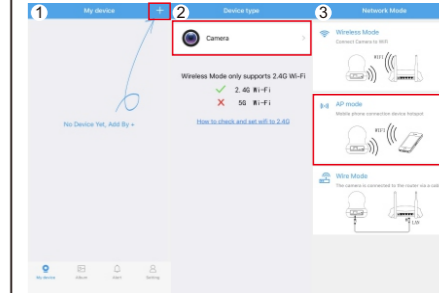


* If the device search fails, please repeat the above steps after restart the camera

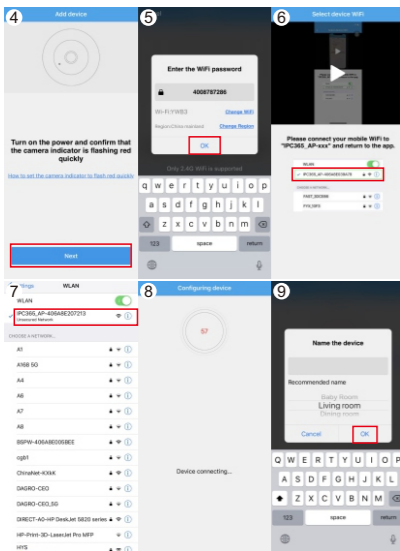
5

Method 2: AP hotspot connection:

- ① Click the plus symbol "+" on the upper right corner
- ② Click "Camera"
- ③ Choose "AP Mode"
- ④ Confirming the red indicator light flashing quickly, if yes - next step; no - refer to 1.3
- ⑤ Enter the WiFi password, then click "OK"
- ⑥ Enter mobile phone WiFi settings
- ⑦ Choose camera WiFi (WiFi name starts with IPC365)
- ⑧ Return to APP, waiting for camera connection
- ⑨ After connecting successfully, name the camera, finish the addition



6



* If the device search fails, please repeat the above steps after restart the camera

7

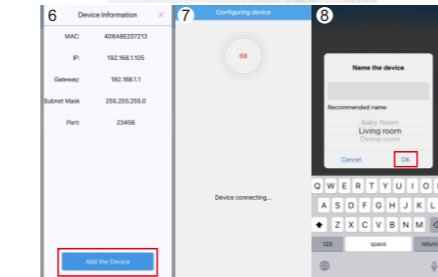
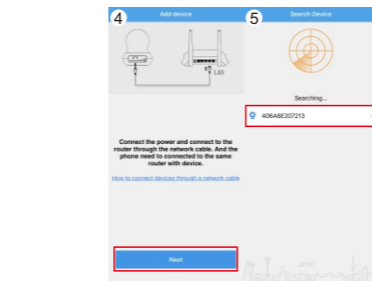
Method 3: Wire mode(device with LAN port)

Confirming the red indicator light flashing slowly, if yes - next step; no - refer to 1.3

- ① Click the plus symbol "+" on the upper right corner
- ② Click "Camera"
- ③ Choose "Wire Mode"
- ④ Click "Next". (Connect the camera to the router with a network cable as the picture shows)
- ⑤ Click on the searched camera "Mac address"
- ⑥ Add the device
- ⑦ Waiting for camera connection
- ⑧ After connecting successfully, name the camera, and click "OK"



8



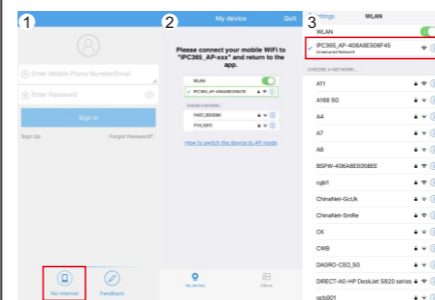
* If the device search fails, please repeat the above steps after restart the camera

9

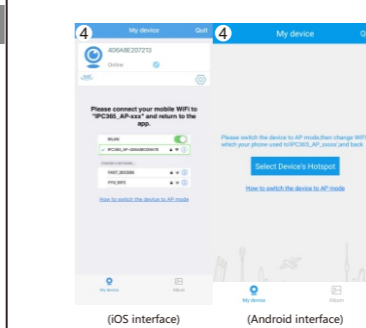
No network viewing mode

Confirming the red indicator light flashing quickly, if yes - next step; no - refer to 1.3

- ① Click the "No Internet" button on the lower left corner of the screen
- ② Enter mobile phone WiFi settings
- ③ Select camera WiFi (WiFi name starts with IPC365)
- ④ Return to APP, connection completed



10



For more information, please visit the use help in the APP

Please follow the steps below to find the use help with APP

- ① Enter APP main interface
- ② Click "Setting" on the bottom right corner of interface
- ③ Click help to enter APP using instruction
- ④ Choose the option you want to know

PS: For more features, please refer to the APP update

11