

**HOLOGRAPHIC ADVERTISING MACHINE**

# **Instruction Manual**

## **(65CM)**



# 1. Products parameter

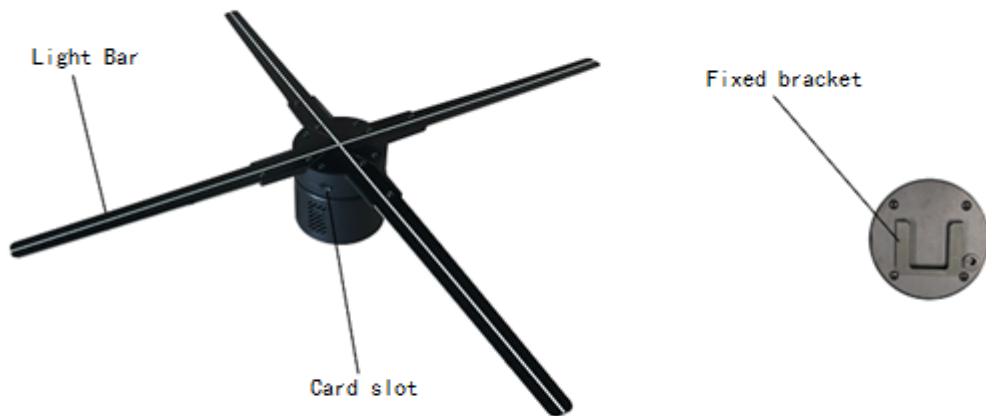
<b>HOLOGRAPHIC ADVERTISING MACHINE</b>	
Lamp: RGB 1615 LED	LED service life: 100,000hours
Resolving power: 1024×768	Power rating: 60W
Output Volatage: AC100-240V,50/60HZ	
Support format: MP4/AVI/RMVB/MKV/GIF/JPG/PNG	
Sheathing material: ABS+PC+Hardware	weight: 2kg
Viewing angle: 150°	Play files: bin
Products size: 650*650*95mm	
Package size: 378*268*127mm	

- ◆Support common video, animation, and image display
- ◆The product is suitable for indoor use. If you need to use it outside, be equipped with a protective cover.
- ◆The product is recommended to be installed above 3.5 m, otherwise the protective cover should be fitted.
- ◆Custom video and pattern editing, our memory card with pattern editing software.
- ◆Editing software is suitable for Windows XP, Windows 7/Windows 8/Windows 10 computer operating system.

## Warning

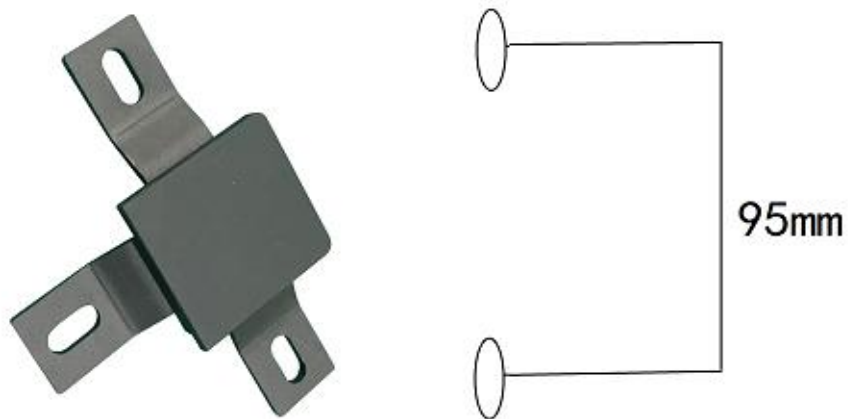
1. Non professional personnel do not disassemble the product so as to avoid damage or personal injury.
2. The product is installed in the place where the person is not in contact, otherwise the protective cover must be equipped.

## 2. Product structure



## 3. Installation steps

a. Set 2 fixed holes in the target installation area Aperture 8mm



b. Install the fixed base to the installation hole set in step 1 using the expansion screw.

c. The product links the power supply, then hangs on the fixed base, locks the fixed screw, and can be electrified.

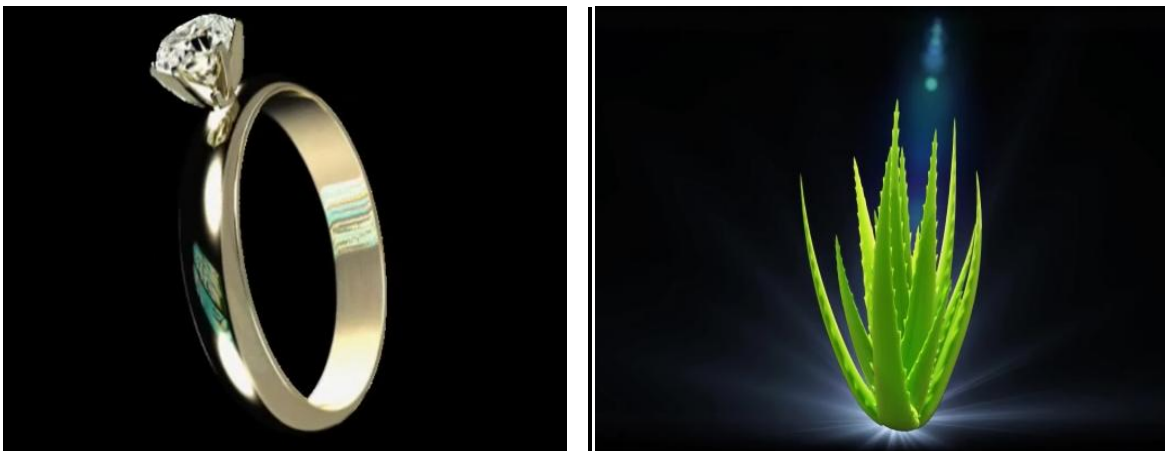
## 4. Software

Dear Customers,

Thank you for purchase our Hologram display, before use the software, please prepare your video first, your video better design as following, so that will have a good display result.

- 1) Pure black background (will looks 3D)
- 2) MP4 AVI, Rmvpb, Gif format video
- 3) 720x720 pixels
- 4) 10-15 seconds video time suggest
- 5) JPG,PNG picture Ok too(Black background better)

3D Video/Picture examples(Pure black background)



Tips:

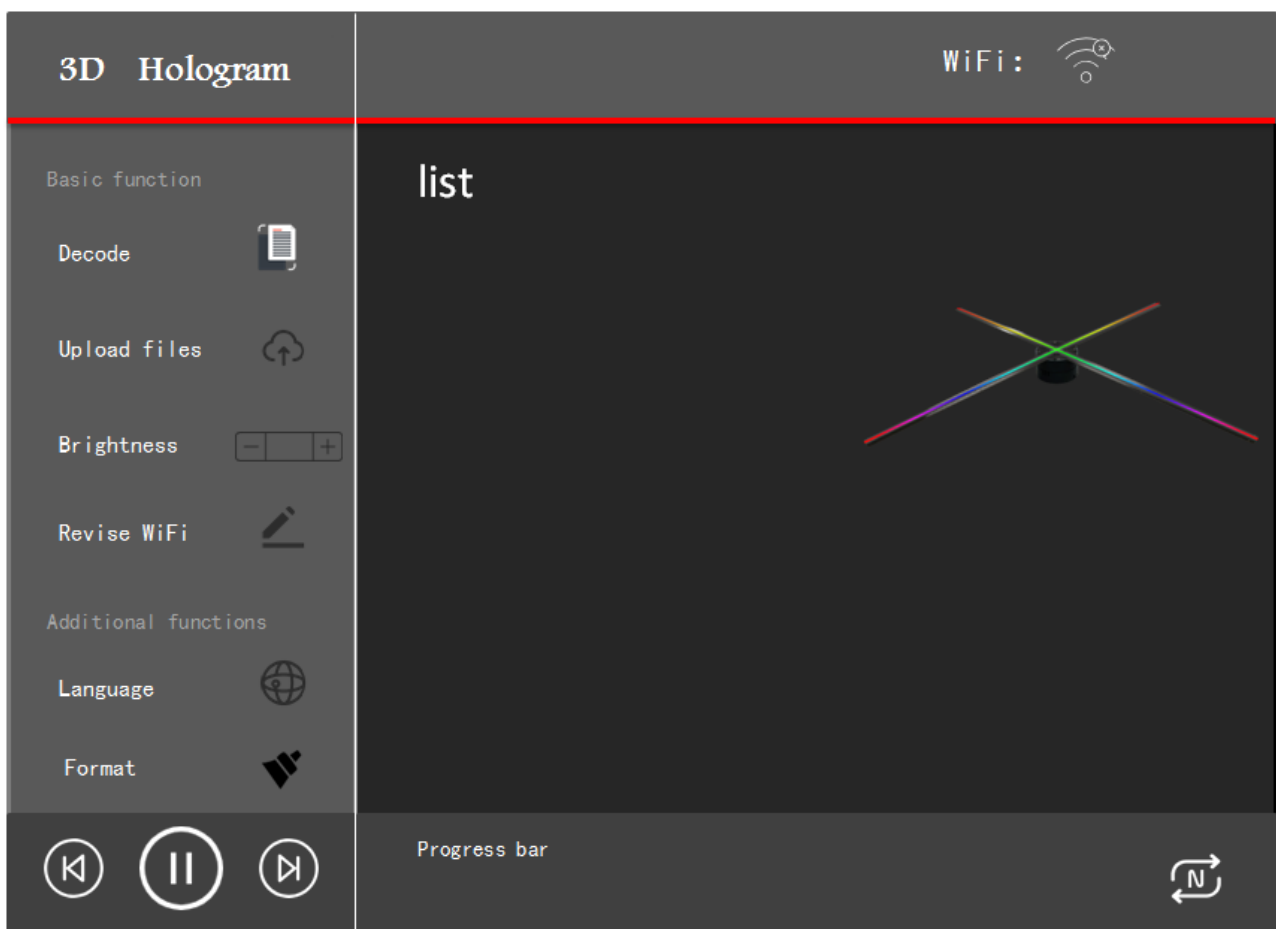
- 1) Software use on Windows 7/10 computer is Best
- 2) The hologram devices only read bin file, other format can not read directly. Also please noted the bin file can not open, thanks.

## Start use software:

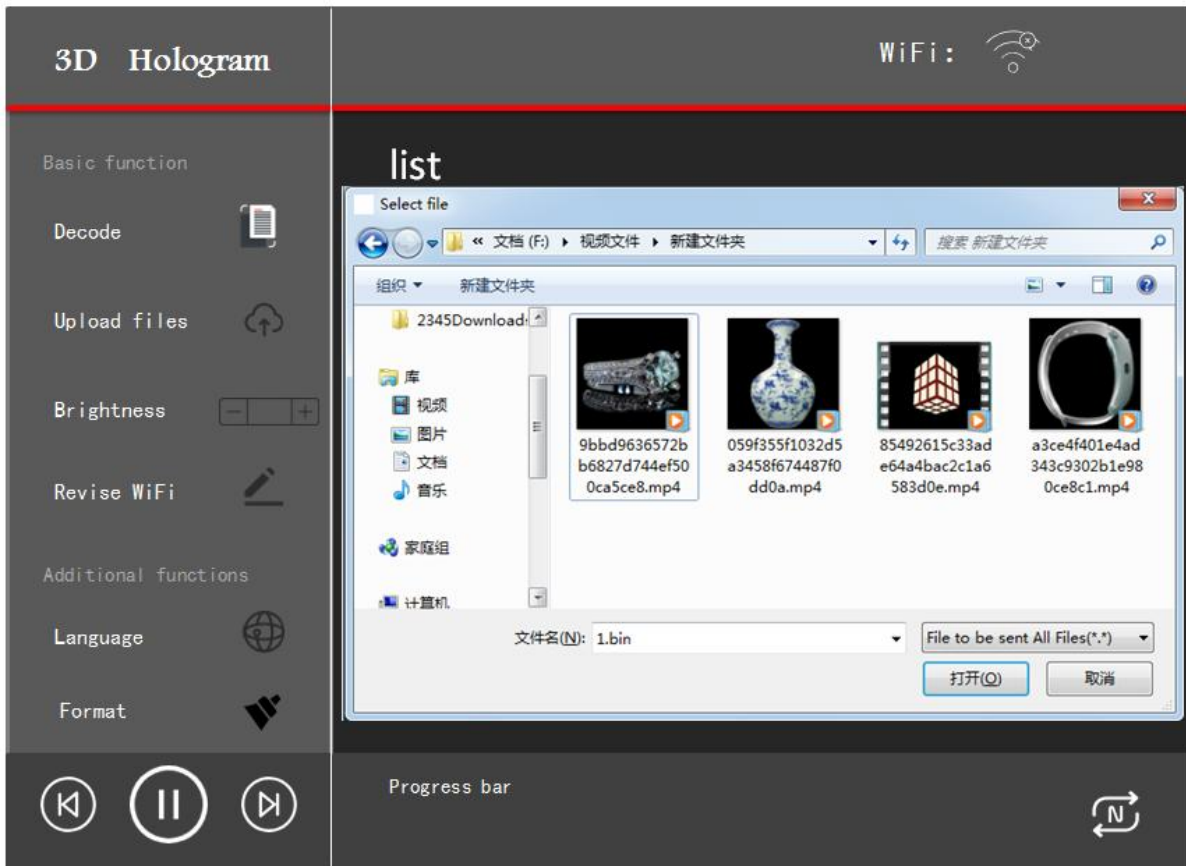
Step 1. Copy the software from SD Card to use on your computer, then open the software document

Step 2. Double click below . exe

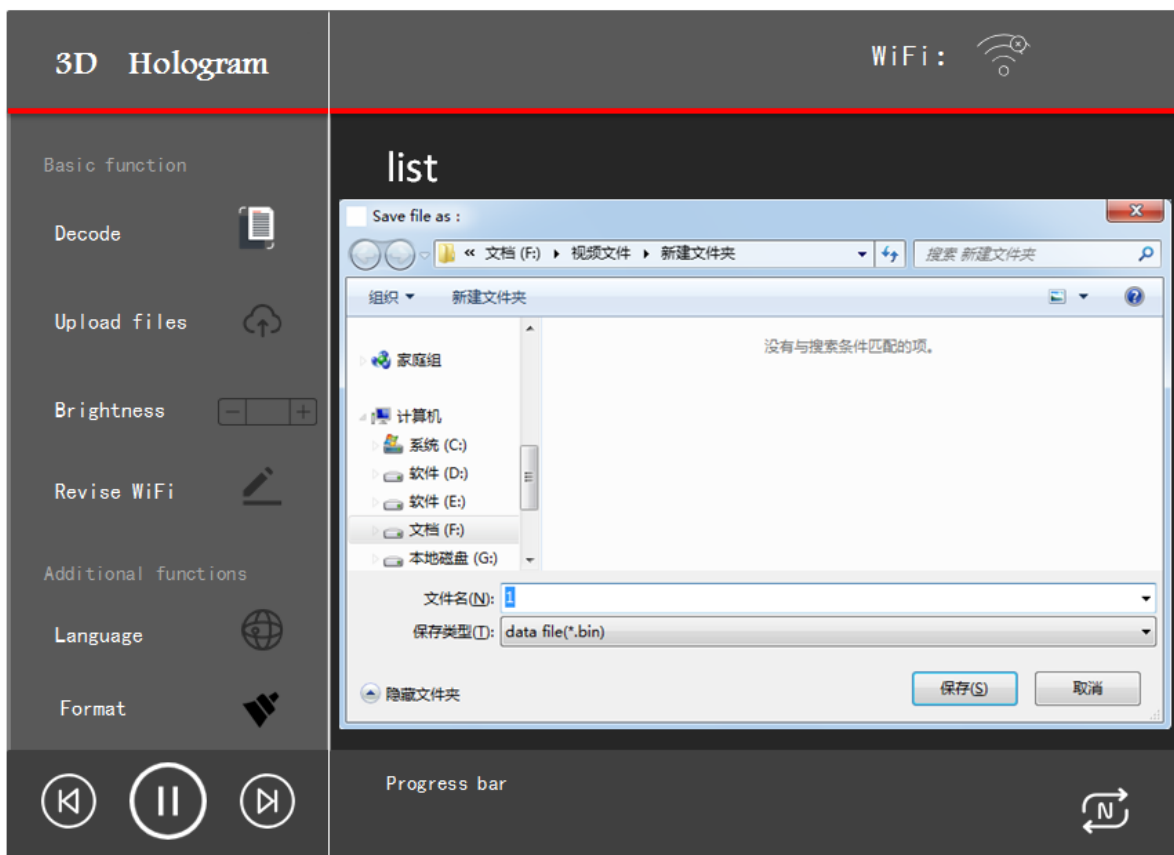
Will be:



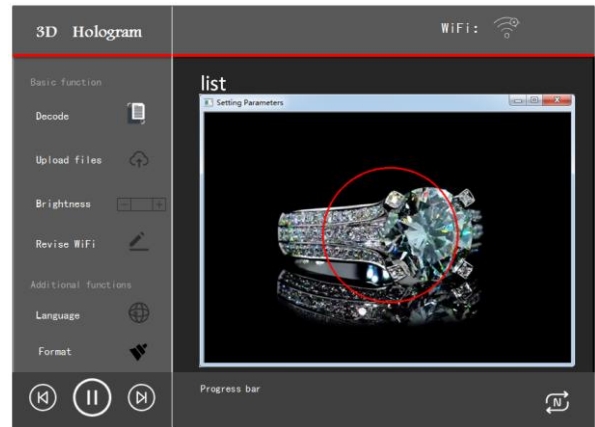
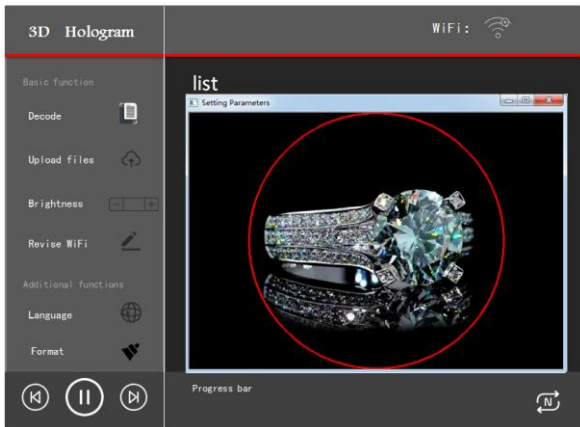
Step 3. Import video: (Select the video file from your PC, mp4, avi, rmvb format)



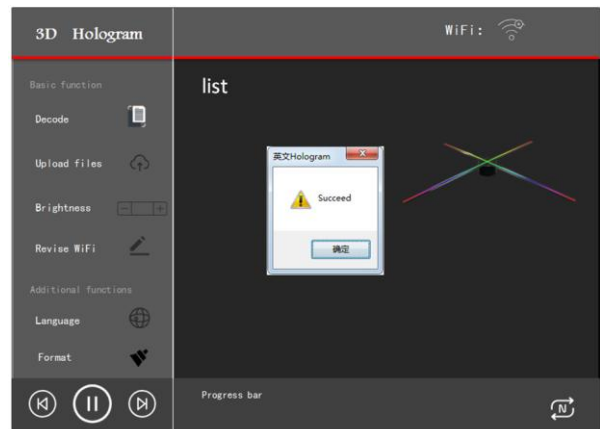
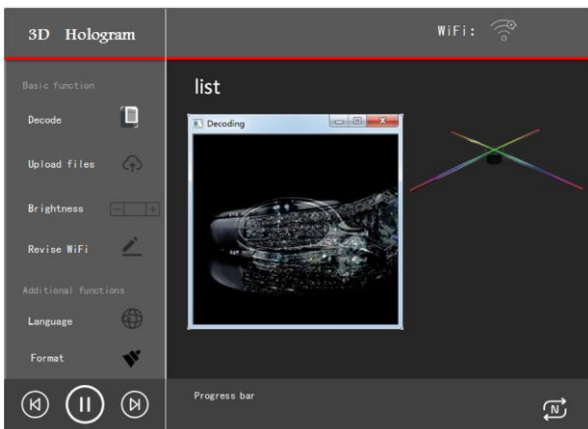
Step 4. Click download to U disk SD Card plugged in PC, click ok.



Step 5. Upload finish, zoom out to be smaller to make the video in red circle. (In contrast, zoom in is bigger, anyway, make sure inside the red circle middle)

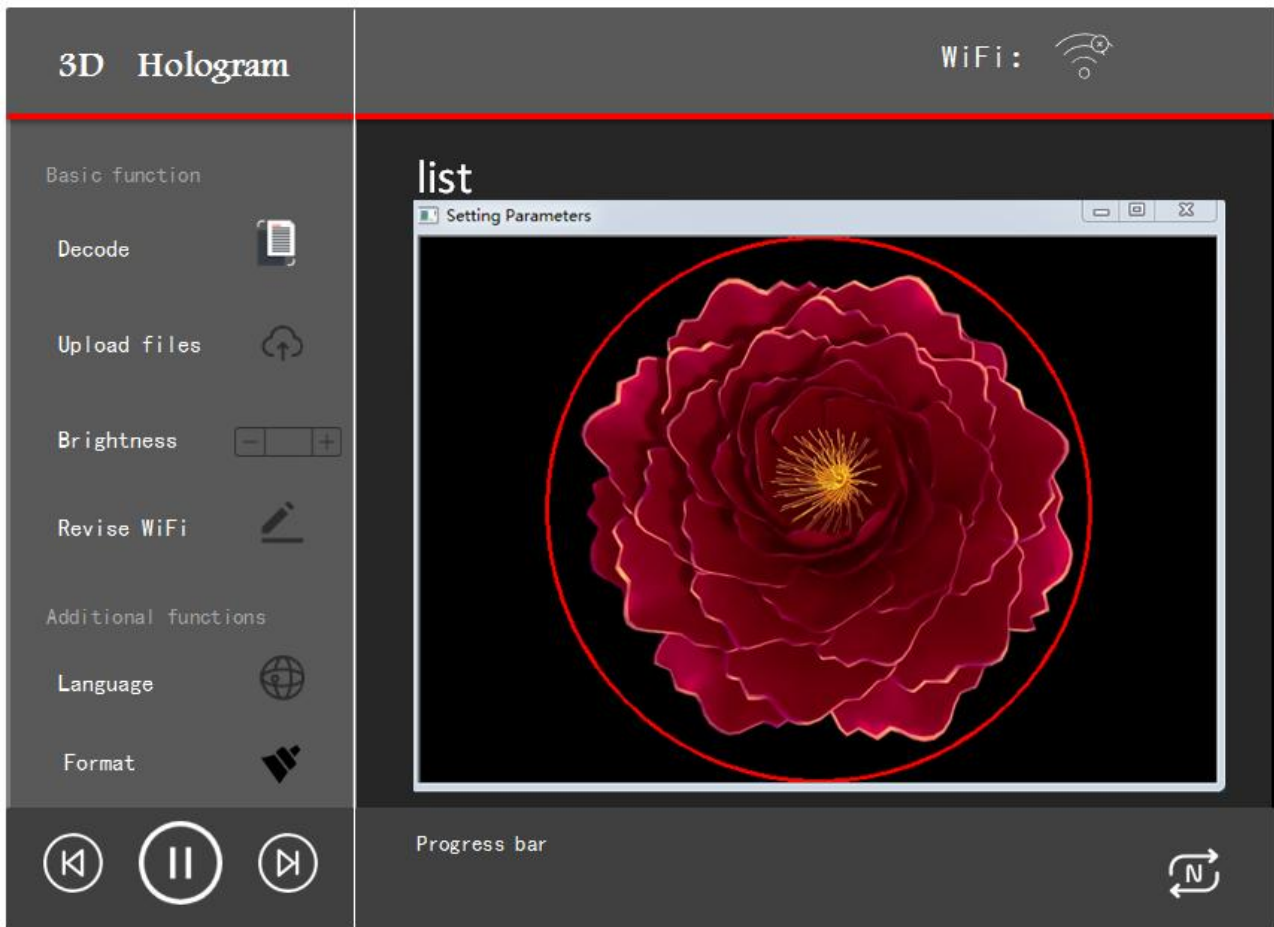


Step 6. Click OK come to below, click start; Wait for transfer, Transfer finished will be:



Step 7: take to play on your machine.

If you want make more videos one time, same way, finally will be:



Then download together same way, will play one by one.

(Remark: Picture is similar way, just choose “import picture”.)



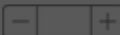



Thank you for your attention.








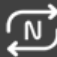


## 5. WiFi Instructions :

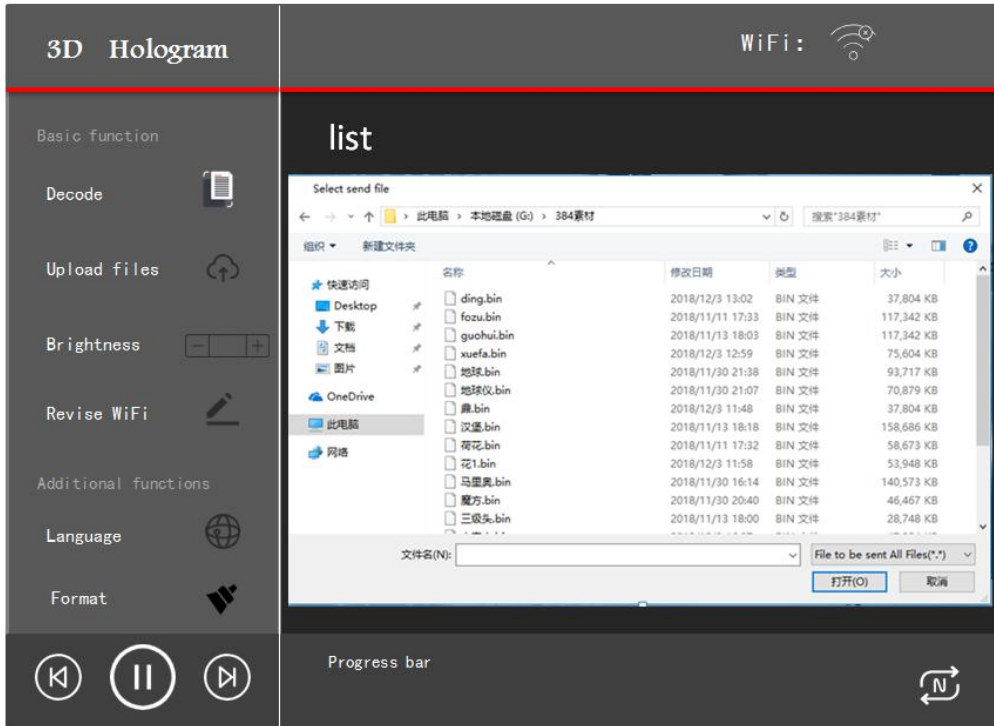
Operation interface description

After the computer connects to the machine WIFI, then control the machine by software.

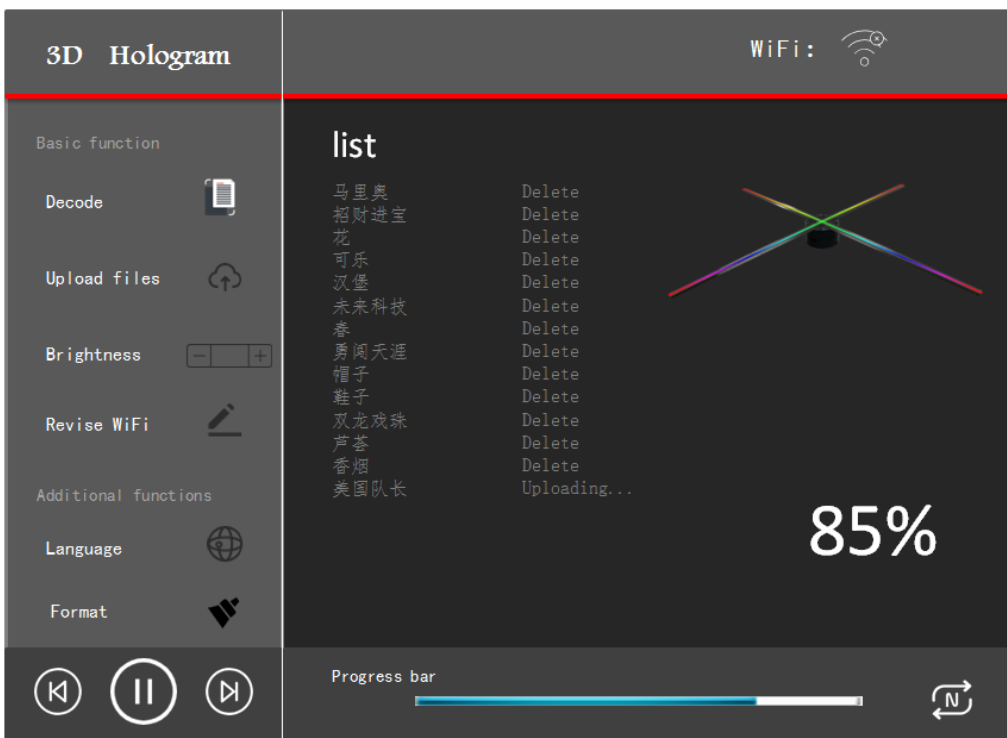
Basic function	
Decode 	Converting Material Format (Converting MP4, AVI and other formats into BIN files)
Upload files 	Upload bin file to machine
Brightness 	Adjust brightness (increase, decrease)
Revise WiFi 	Modify WiFi Name
Additional functions	
Language 	Switching between Chinese and English
Format 	Empty the contents of SD card

  	Progress bar	
	Toggle button : Play the last video	
	Control button : Stop playing, stay in the current screen	
	Toggle button : Play the next video	
	Cycle button : Switching between Single Video Loop Play and List Loop Play	

1. click the computer WiFi to connect the key and select "hologram001" to connect.



2. Click the Send button, pop up the File Selection Box, and select the converted BIN video you want to send.



3. During the sending process, the sending button right-hand frame progress bar will show the sending progress, when the progress bar shows 100%, indicating the sending. When the file is sent to the machine, it will play automatically. (do not perform other operations during sending)

# Mobile APP operation

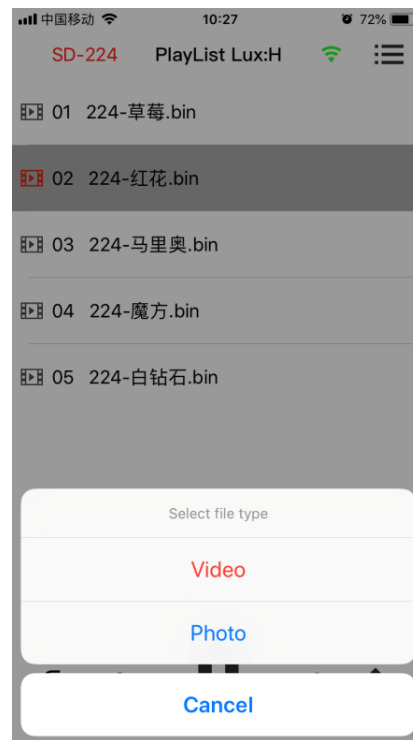
Step 1. Enter the setting connection machine hotspot WiFi "hologram001" next open the software



Step 2. Select machine model and langue(-65)



Step 3. Click the Upload button and choose to upload a video or image



Step 4. Schematic diagram of uploading and uploading success

