



Royale MAX

Hello!

Welcome to your Royale Max user guide. We know you want to get right into the action, but we highly recommend you read this first.

Our two most valuable pieces of advice:

1. Practice makes perfect.

Like any new skill, be patient with yourself as you learn. Make sure you understand the basics before diving into big projects!

2. Wash out your gun after every use.

This is a kitchen appliance, and needs proper washing after each use to keep it working its best.

Let's get started!



Congratulations on your new **Cookie Countess Royale Max Airbrush System!**

You are on your way to creating beautifully airbrushed cookies, cakes, and other desserts.

Before you Begin...

- Practice makes perfect! Give yourself time to learn the ins and outs of airbrushing and don't be afraid to mess up a few times.
- Video guides and tutorials are available at thecookiecountess.com/airbrush
- Maintenance and cleaning are regular parts of owning an airbrush, so it's important to become comfortable with the cleaning steps outlined on page 3 of this guide.

Airbrush Color Basics

What types of colors to use

Make sure your colors are labeled as **Airbrush Colors**. Both water-based or oil-based airbrush colors will work.

You cannot use gel colors, powdered colors, or any homemade colors in this machine. Before use, inspect your color to be sure there are NO solid or thick pieces in your airbrush color. The airbrush color should be thin and not gel-like.

Shimmer and Metallic Colors

For shimmer, metallic, or pearl airbrush colors you may want to use an optional .5mm gun (available on our website); the slightly larger nozzle will allow thicker colors to flow without clogging your gun.

Airbrush Gun Basics

The Airbrush Gun

Your system includes a .4mm Nozzle Single-Action Airbrush Gun. When the machine is on, air will come out of the gun, but color won't come out until you pull back the trigger. Only a single-action gun can be used with this machine.

Your airbrush gun will arrive to you *tested and inspected*. Do not disassemble the gun, it has many delicate parts that can easily get lost.

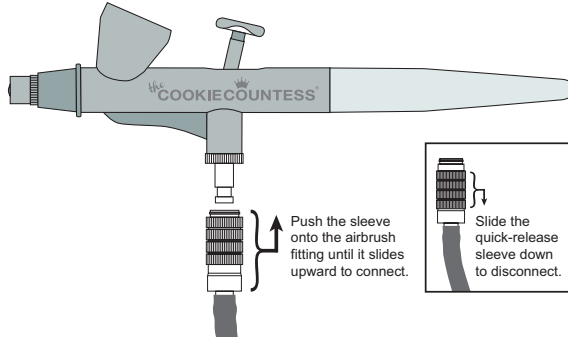
Inspect Your Colors First:

Some brands of airbrush color can be thick, and older colors can become thick over time. These can cause damage to your airbrush machine.

Let's Get Started!

Connect the hose and plug in your machine

- Unwrap the black air hose and attach one end to your compressor hose connection, and the other end to the base of your airbrush gun.



Protect your work area

- Airbrush spray will travel, so isolate your work surface and keep the airbrush gun away from items that you don't want to be colored.

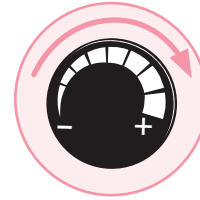
Add color to your airbrush gun

- Add 3-5 drops of airbrush color to the gun well.
- Even if the machine is on, color will not come out of the gun until you pull back on the trigger.



Adjust the pressure

- Press the power button, and turn the pressure knob on high by turning it fully clockwise. The machine will work best on this setting; the goal is to keep the pressure as high as possible to get an even spray.



Turn knob clockwise to increase pressure

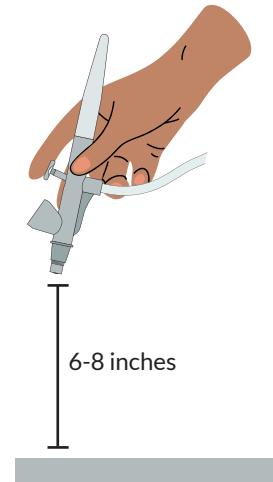
- **The amount of color that will spray is determined by the amount you pull back on the gun trigger.** Start by slowly pulling back on the trigger and spraying lightly as you learn the process of airbrushing.
- The best results will come from setting the machine on high pressure and gently pulling back on the trigger.

Spraying

- For best results, apply color in layers – don't try to create an even coat of color in a single pass.
- The distance between the airbrush gun and your work surface affects your spray pattern. We recommend spraying from a distance of 6-8" away from your surface.
- Being too close to the surface or pulling too hard on the trigger will result in splotchy color. Light layers are your friend here, too. Use steady, even passes to build up color.
- Practice spraying on a paper towel to get used to the system.
- A thorough rinsing of your gun with warm water between colors can keep your gun running smoothly and minimize the risk of clogging.

Dry Time

- Dry time can vary from 2-15 minutes depending on how much color you put down. Experiment first! If it has been 45+ minutes and your color is still tacky, it is likely that you have used too much color.



Cleaning Your Machine After Use

Basic regular cleaning and maintenance of your gun is required to keep your airbrush system running smoothly and spraying cleanly.

- After each airbrushing session, fully spray out any remaining color. Fill the gun well with warm water and continue to spray out until the spray runs clear.
- Use a paper towel to wipe down the inside of the gun well and needle cap to remove any remaining color residue.
- It's very important to clean your gun as soon as you're finished using it, every time! Don't let color dry in your gun because it can cause clogs.



A clean machine is a happy machine!

The majority of Airbrush System issues can be avoided by simply rinsing and cleaning your airbrush gun after every session.

Troubleshooting

Here are common errors and their solutions:



Blotchy Color

Cause: Pulling the trigger too hard, or the gun is being held too close to the work surface.

Solution: Turn the pressure knob to the highest setting and pull back lightly on the trigger to create an even flow of color spray.

Record a video of yourself while airbrushing to see if you are keeping a proper 6-8 inch distance between the gun and your surface.

Problem: Airbrush spray is blotchy or the gun is sputtering.

Solution: You may be too close to the work surface, pulling the trigger too hard, using old/thick airbrush color, or your gun is clogged.

- Try spraying plain, filtered water with the pressure knob set to high. If the gun doesn't spray in a fine mist at full power, then you have a clog. See deep cleaning instructions page 5.



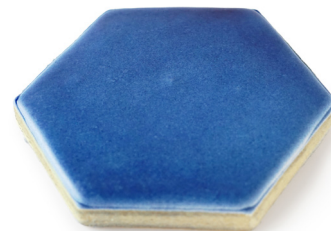
Uneven Spray

Cause: Machine pressure is too low, gun has a clog, or there is an air leak (uncommon).

Solution: Perform a deep cleaning, see pg 5.

Turn the pressure knob to the highest setting and pull back lightly on the trigger to create an even flow.

To troubleshoot an air leak, see page 5.



Perfect!

Ideal pressure and distance.

This even finish was the result of building up light layers of color.

Problem: Gun is spraying color, even when I'm not pulling the trigger.

Solution: The needle is not pushed forward enough inside the gun.

- Unscrew and remove the gun tail. Unscrew the needle nut.
- Carefully push the needle all the way forward until it stops.
- Replace the needle nut and gun tail.

Problem: Airbrush spray is too strong, too weak, or random in pressure.

Solution: Follow these steps in order:

- **Check compressor.** Detach the hose from the machine body, turn the machine on high and put your finger over the machine hose connection. You should feel pressure against your finger. If it makes no change, the compressor may be faulty (this is a rare problem, please contact us).
- **Check hose for leaks.** If the hose connection is working, attach the hose to the compressor and put your finger over the other end of the hose. The hose should create pressure against your finger. If the hose does not have proper airflow it may be faulty. You can purchase a replacement hose from our website.
- **Check gun.** Attach your airbrush gun to the hose and make sure the needle cap (1) and nozzle cap (2) are on tight. Put filtered water in the gun well, turn on the machine, and gently pull the trigger. Water should come out in a fine mist. If the gun does not spray, follow unclogging instructions below.
- **Advanced: Check Needle.** With your machine off, unscrew the gun tail (14) and make sure the needle is going in and out with the trigger when it's pulled back. If not, lightly press the needle toward the front of the gun and then screw the needle nut on tight. That will attach the trigger to the needle so that the needle pulls back with the trigger.

You should be seeing better results at this point. If water is spraying out but color is not, then the issue may be your airbrush color (see Airbrush Color Basics on page 1) or your gun has a clog. See deep cleaning instructions below.

Deep Cleaning and Unclogging

- **After performing a regular cleaning,** fill the gun well with hot water and place your finger over the front of the nozzle cap while pulling the trigger. This will force the water to flow back into the gun well, cleaning the interior of the gun. Dump this water out and repeat.
- If you are comfortable dismantling the gun for cleaning, you can remove the gun tail (14), needle and nozzle cap (1, 2), needle nut (13), and needle (5) and soak in filtered, warm water overnight. Make sure all parts are dry before reassembly.
- Stubborn clogs may happen when the machine is not properly cleaned after each airbrushing session. We recommend using the *Cookie Countess Airbrush Gun Cleaning Kit* to remove hardened debris.
- Visit thecookiecountess.com/airbrush for a cleaning video.

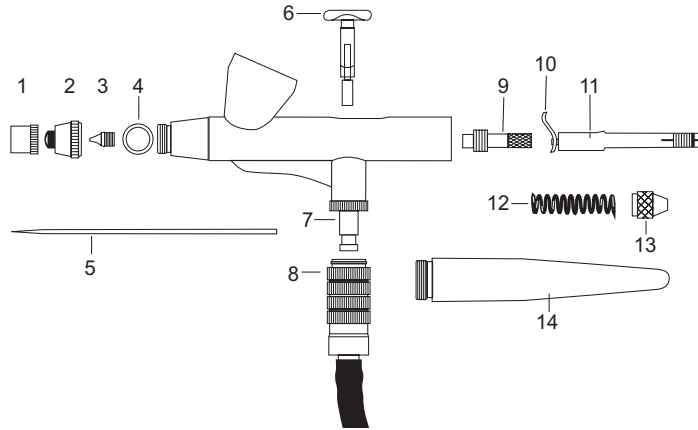


Watch and Learn!

View a cleaning tutorial at
thecookiecountess.com/airbrush

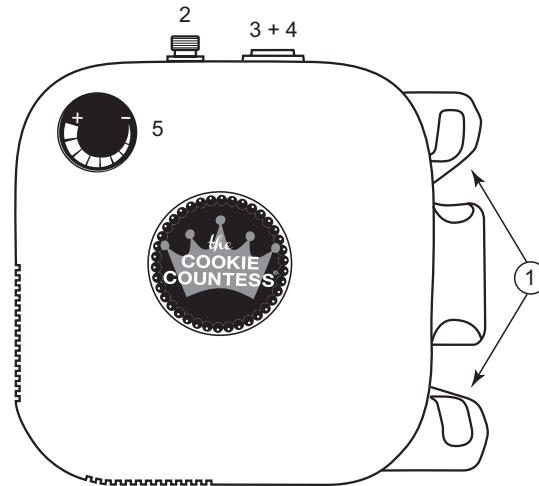
Airbrush Parts

1. Needle Cap
2. Nozzle Cap
3. Nozzle
4. O-Ring for Nozzle Cap
5. Needle
6. Operation Lever
7. Valve O-Ring
8. Hose Connector
9. Lever Tension Adjuster
10. Lever Guide
11. Needle Chucking Guide
12. Spring
13. Needle Nut
14. Gun Tail



Compressor Parts

1. Gun Holder
2. Hose Connection
3. Power Indicator Light
4. Power On/Off
5. Pressure Knob



Important Safety Information

The warnings, precautions, and instructions in this user guide cannot cover all possible conditions and situations that may occur. It must be understood by the operator that common sense and caution should be used during the use of this product.

WARNING: Do NOT operate with exposed long hair, jewelry or loose clothing.

WARNING: Cord poses a potential strangulation hazard to young children. When not in use, store out of children's reach.

ELECTRICAL WARNING: Outlets must match the airbrush compressor plug. Never modify the plug in any way. Using a standard outlet will reduce risk of electric shock.

Disconnect the machine from the power source before making any adjustments, changing accessories, or storing the airbrush compressor.

Keep compressor well-ventilated. Do not cover the compressor during use.

The airbrush system is NOT A TOY and not intended for children under the age of 18.

Under extreme conditions the powerful AC motor may overheat at which point the internal thermometer will shut the unit down as a safety precaution. This is not likely to occur but if it does, let the unit cool before plugging back in and operating again. We designed the machine with an internal fan to automatically cool the motor by expelling heat out of the bottom vents. The unit should be placed on a flat surface where air is able to vent out from underneath. Do not place unit on top of a towel which will partly cover the exhaust vents and lead to overheating. With continuous, heavy use some of the internal heat may transmit to the metal airflow knob and to the metal quick connect valve but this is normal.

2 Year Compressor Warranty

The Cookie Countess warranties this product's compressor (body, exclusive of hose, airbrush gun, quick connect parts, and electrical adaptor) to be free from defects in material or workmanship for a period of two (2) years following the date of purchase, provided that the product is used in compliance with the operating manual.

1 Year Airbrush Gun Warranty

The Cookie Countess warranties this product's airbrush gun (exclusive of hose and quick connect parts) to be free from defects in material or workmanship for a period of one (1) year following the date of purchase, provided that the product is used in compliance with the operating manual.

These limited warranties do not cover failures due to abuse, accidental damage or when repairs have been made or attempted by anyone other than The Cookie Countess.

A defective product meeting the warranty conditions set will be replaced or repaired at no charge by exchanging the product to The Cookie Countess with proof of purchase.

Do not return to the store!

For all assistance, including warranty information, please contact us at: www.thecookiecountess.com/contact



E115575



The Cookie Countess, Inc
Warwick, Rhode Island USA
www.thecookiecountess.com
Email: support@thecookiecountess.com
Phone support, M-F 9-4 EST: (401) 580-0068
All content © The Cookie Countess, Inc