

Brush Washer

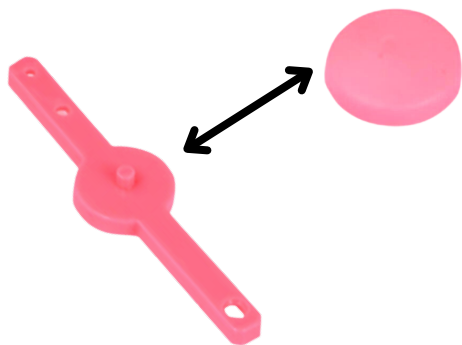
How To Assemble

Assembly video located in product listing

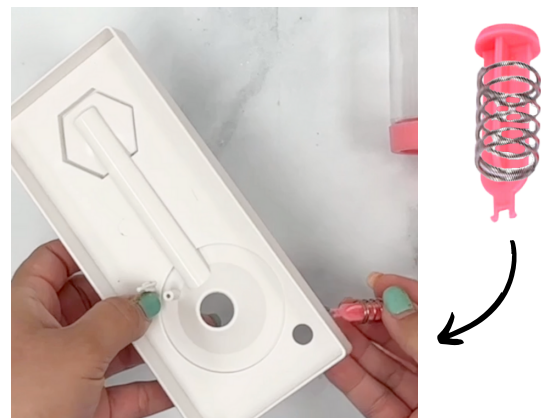
1. Remove all parts from the plastic packaging.



2. Pop the drain stopper into place on the lever by pushing it down onto the small round peg on the center.



3. Insert the bottom of the spring-loaded drain button through the hole in the top tray, so that it comes through the underside of the tray.



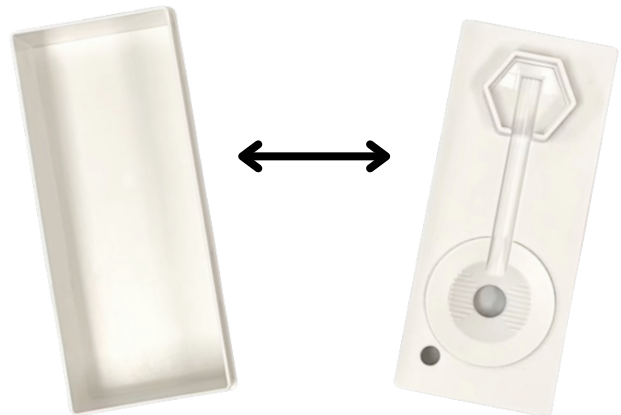
4. Place the lever and stopper into position so that the stopper pokes through the opening in the middle of the tray, coming out on the top side. Snap the bottom of the spring-loaded drain button through the single hole at the end of the lever, locking the button and lever together.



5. Place the screw through the second hole from the other end of the lever and tighten securely with a Phillips head screwdriver. Be careful to not overtighten, as this can strip the plastic. When assembled properly, pressing the spring-loaded drain button should cause the drain stopper to open slightly.



6. Attach the top tray to the bottom tray, pushing down to make sure that it is secure.



7. Fill the water cup with water and then place into position on the top tray.

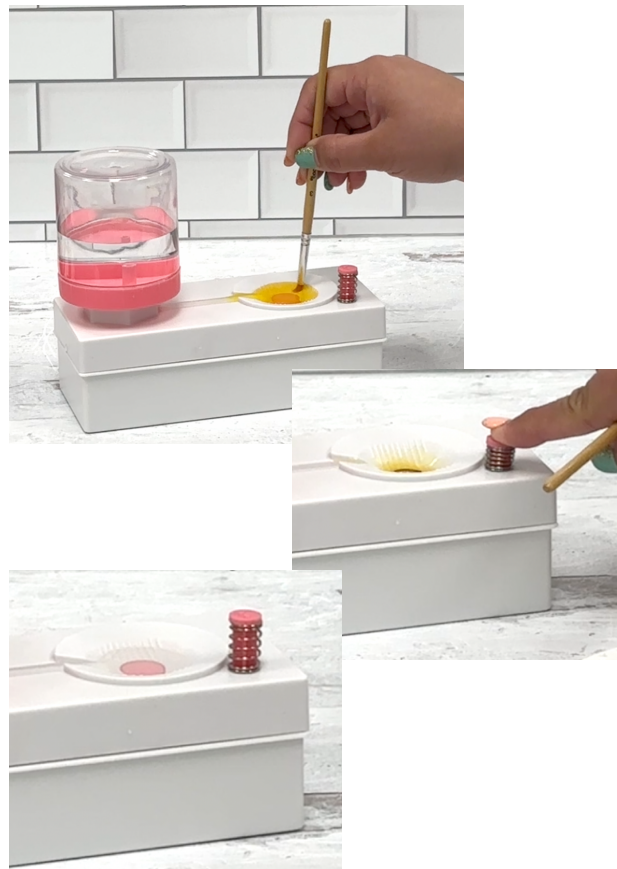
(Note: the water cup lid is not a screw-on/screw-off style lid. It simply pops on and off, and the ridges on the plastic keep the lid in place.)

The base of the water cup lid has an angled dispenser; make sure the taller part of the dispenser is facing towards the water channel and drain. The channel and round cavity will fill with just enough water to fill it, without spilling over.

8. Clean your dirty brush in the round cavity, using the raised ridges on the plastic tray as an agitator to fully clean the brush.

To drain, press the spring-loaded drain button to allow the dirty water to drain into the bottom tray. Clean water will automatically be dispensed from the water cup. Refill the water cup as needed.

Empty the bottom tray as needed, approximately every 4-5 water cup refills.





Thank you for ordering!