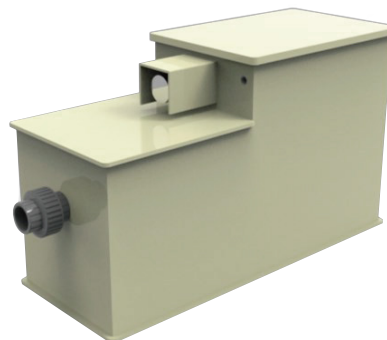


AQUADREAM®

Aqua Dream is an American company with locations in California and Washington State. Our goal is to provide our customers with a beautiful product that is not only visually appealing, but also functional and reliable. We specialize in all things aquatic and have been serving America, Europe and Oceania since 1999 manufacturing premium aquariums for your living space and water pumps in many sizes, perfect for hydroponics, aquaponics, aquatics, gardening, ponds & waterfalls, outdoor & tabletop fountains, aquariums & pools, horticulture, agriculture, and irrigation...



Here at **AQUADREAM®** we pride ourselves on customer satisfaction, and our ability to create custom orders tailored to fit any individual's needs. If you have any questions or have inquiries regarding pricing, wholesale orders, inventory, or product customization, please feel free to contact: sales@aquadreamusa.com
wholesale@tigermountainindustrial.com



INTELLIGENT DC SINE WAVE ECO WATER PUMP

1-20 step for flow regulation, 2-20 step for wave making function
 Used for protein skimmer, fountain, pond and aquarium tank.

- Sine wave ultra-silence
- Flow rate auxiliary
- Cleanself
- Automatic pressure- increasing
- Automatic timing
- Automatic protection



DCS SERIES

INFORMATION:

Model	Power	Max. output	Max. pump height	Product Size
DCS-800	13W	265GPH	11'1"	3 3/8"L x 1 7/8"W x 3 1/8"H
DCS-1200	17W	400GPH	12'1"	4 1/8"L x 2 1/2"W x 3 1/2"H
DCS-2000	22W	530GPH	12'5"	4 1/2"L x 2 1/2"W x 3 3/4"H



VOLTAGE DC 24V



DCS SERIES

INFORMATION:

Model	Power	Max. output	Max. pump height	Product Size
DCS-4000	30W	1060GPH	12'5"	7 1/8"L x 3 3/8"W x 5 7/8"H



VOLTAGE DC 24V



DCS SERIES

INFORMATION:

Model	Power	Max. output	Max. pump height	Product Size
DCS-6000	50W	1590GPH	16'	7 5/8"L x 4 1/8"W x 7 1/8"H
DCS-9000	70W	2380GPH	19'7"	7 5/8"L x 4 1/8"W x 7 1/8"H
DCS-12000	88W	3170GPH	23'3"	8 1/8"L x 4 1/8"W x 7 1/8"H



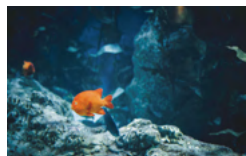
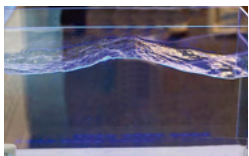
VOLTAGE DC 24V



SINE WAVE WIRELESS LINKAGE WAVE MAKER

Six modes, nine frequency conversions.
Restore 90% of the waves and currents in the sea.

- Simulated ecological environment.
- Increase filtering effect will not produce dead water.
- Improve the amount of dissolved oxygen in the fish tank, which is beneficial to the growth and development of fish.
- Fish tank is cleaner, the bottom residue is blown, and the fish will be healthier.
- Increase exercise for the fish to maintain a beautiful and healthy appearance.



LBS SERIES INFORMATION:

Model	Power	Max. output	Product Size
LBS-20	20W	1590GPH	2 3/8"L×2 1/8"W×3 3/8"H
LBS-30	30W	2380GPH	2 3/4"L×2 3/4"W×4 1/8"H
LBS-50	50W	4760GPH	3 1/2"L×3 1/8"W×4 3/4"H

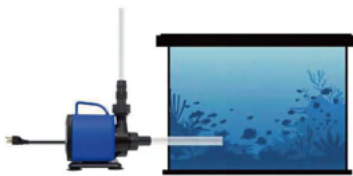
VOLTAGE DC 24V



POWERFUL AMPHIBIOUS PUMP



SUBMERSIBLE USE:
Designed for use in medium to large aquariums, ponds, pools, fountains, water gardens, hydroponic & aquaponic systems.



EXTERNAL USE:
Epoxy resin sealed housing to keep the motor sealed and fully insulated.

*Pipes must contain water while in use



JD SERIES INFORMATION:

Model	Power	Max. output	Max. pump height	Product Size
JD-3500 /AD 925	35W	925GPH	8'2"	6 7/8" L x 3 1/2" W x 3 1/8" H
JD-4500 /AD 1190	45W	1190GPH	9'10"	6 7/8" L x 3 1/2" W x 3 1/8" H

VOLTAGE 110-120V 50/60Hz
220-240V 50/60Hz



JD SERIES INFORMATION:

Model	Power	Max. output	Max. pump height	Product Size
JD-5500 /AD 1455	55W	1455GPH	11'5"	7 1/4" L x 4 1/2" W x 6 1/8" H
JD-6500 /AD 1720	65W	1720GPH	13'1"	7 1/4" L x 4 1/2" W x 6 1/8" H

VOLTAGE 110-120V 50/60Hz
220-240V 50/60Hz



JD SERIES INFORMATION:

Model	Power	Max. output	Max. pump height	Product Size
JD-7500	75W	1980GPH	14'9"	7 5/8" L x 4 1/2" W x 7 1/4" H
JD-8500	85W	2250GPH	16'4"	7 5/8" L x 4 1/2" W x 7 1/4" H

VOLTAGE 110-120V 50/60Hz
220-240V 50/60Hz



SUBMERSIBLE PUMP SERIES



- Aeration filter cycle, wave building function.
- Quiet operation, energy saving, low energy consumption.
- Easy to disassemble and clean.
- Suitable for fresh water and sea water.

DB SERIES

INFORMATION:

Model	Power	Max. output	Max. pump height	Product Size
DB-1608	8W	119GPH	3'1"	3 3/8"L×1 7/8"W×3"H
DB-1618	18W	265GPH	5'6"	3 7/8"L×2 1/4"W×4 5/8"H

VOLTAGE 110-120V 50/60Hz
220-240V 50/60Hz



DB SERIES

INFORMATION:

Model	Power	Max. output	Max. pump height	Product Size
DB-1628	28W	320GPH	6'6"	4 3/4"L×2 1/2"W×5 5/8"H
DB-1638	38W	530GPH	8'2"	5 1/8"L×2 5/8"W×5 1/2"H
DB-1658	58W	790GPH	9'8"	5 1/4"L×3 3/8"W×6 1/8"H

VOLTAGE 110-120V 50/60Hz
220-240V 50/60Hz



SUBMERSIBLE WATER PUMP

Submersible Aquarium Water Pump DB-300

Ultra Quiet Design
Low Resistance And Noise Reduction For A Quiet Design Creating A Quiet Sleep Environment
Magnetic Design Helps To Keep Propeller In Position.

Powerful Disk Rack
Strong Suction Along With No Glue Or Oils For Easy Of Installation

Flow Regulation
Easy To Use Regulator Switch To Increased Or Reduced Water Flow

Submersible Aquarium Water Pump DB-1000

Hydroponics & Aquaponics
Extend Your Growing Season
Feed Your Fish & Your Food

FOUNTAINS
PONDS
AQUARIUMS

Submersible Aquarium Water Pump DB-1500

PONDS
FOUNTAINS
AQUARIUMS

DB SERIES INFORMATION:

Model	Power	Max. output	Max. pump height	Product Size
DB-300	2.5W	70GPH	1'11"	1 5/8"L x 1 1/2"W x 1 3/8"H
DB-333	4.5W	80GPH	2'3"	1 5/8"L x 1 1/2"W x 1 3/8"H

VOLTAGE 110-120V 50/60Hz
220-240V 50/60Hz

DB SERIES INFORMATION:

Model	Power	Max. output	Max. pump height	Product Size
DB-335	5.5W	110GPH	2'7"	2 1/8"L x 1 3/4"W x 2 1/2"H
DB-337	6.5W	130GPH	2'11"	2 1/8"L x 1 3/4"W x 2 1/2"H

VOLTAGE 110-120V 50/60Hz
220-240V 50/60Hz

DB SERIES INFORMATION:

Model	Power	Max. output	Max. pump height	Product Size
DB-1000	18W	260GPH	6'8"	3 3/8"L x 2 3/8"W x 4 1/2"H
DB-1500	35W	400GPH	8'2"	3 3/4"L x 2 3/4"W x 4 7/8"H

VOLTAGE 110-120V 50/60Hz
220-240V 50/60Hz



- Ultra Quiet Design
- Powerful disk back
- Adjustable flow regulation



Flow regulation function
DB-300/333/335/337 with flow regulator.



3IN1 MULTIFUNCTIONAL OXYGEN SUBMERSIBLE WATER PUMP

Power Head

Three Natural Functions



Aeration Function

Pumping Function

Water Quality Cycle

Increases Oxygen Content In Aquarium Water
↓
Keeps The Water Clean
↓
Can Be Used For Pumping

Power Head



3in1 Function

**Circulation
Filtration
Oxygenation**

Clean Your Water And Add Air Bubbles!

- Easy to install and maintain.
- Completely submersible.
- Whisper Quiet, Reliable and Safe.
- Suction cups to fit any aquarium



Filter basket

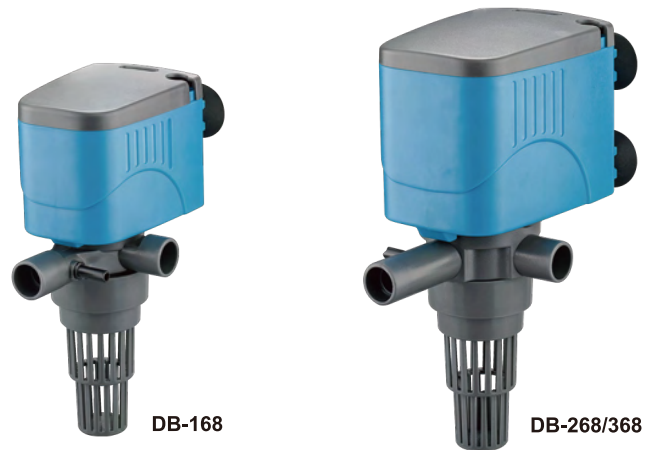
Can easily prevent fish and foreign bodies from entering the pump body, causing unnecessary damage.

SERIES

INFORMATION:

Model	Power	Max. output	Max. pump height	Product Size
DB-168 /JA-600	15W	210GPH	3'3"	5 3/4"L x 1 3/4"W x 3 5/8"H
DB-268 /JA-602	20W	320GPH	3'9"	5 3/4"L x 2 1/8"W x 4"H

VOLTAGE 110-120V 50/60Hz
220-240V 50/60Hz



SERIES

INFORMATION:

Model	Power	Max. output	Max. pump height	Product Size
DB-368 /JA-606	25W	475GPH	4'9"	6 1/4"L x 2 3/8"W x 4 1/2"H
DB-468 /JA-608	35W	660GPH	5'9"	6 1/2"L x 2 5/8"W x 4 5/8"H

VOLTAGE 110-120V 50/60Hz
220-240V 50/60Hz



INTERNAL FILTER PUMP

Internal Filter Pump



BUILT-IN BIOCHEMICAL FILTER COTTON



Removable filter cartridge
Multilayer filtration
simple disassembly and assembly

Biochemical filter cotton
Better filtering effect
give fish a healthy environment



The aerating port can be adjusted in multiple directions.

SERIES INFORMATION:

Model	Power	Max. output	Max. pump height	Product Size
DB-168F /JA-F600	15W	210GPH	3'3"	5 1/4"L×3"W×6 3/4"H
DB-268F /JA-F602	20W	320GPH	3'9"	6 1/8"L×3"W×10 5/8"H

VOLTAGE 110-120V 50/60Hz
220-240V 50/60Hz



DB-168F /JA-F600



DB-268F /JA-F602

SERIES INFORMATION:

Model	Power	Max. output	Max. pump height	Product Size
DB-368F /JA-F606	25W	475GPH	4'9"	6 1/8"L×3"W×13 3/4"H
DB-468F /JA-F608	35W	660GPH	5'9"	6 1/8"L×3"W×16 7/8"H

VOLTAGE 110-120V 50/60Hz
220-240V 50/60Hz

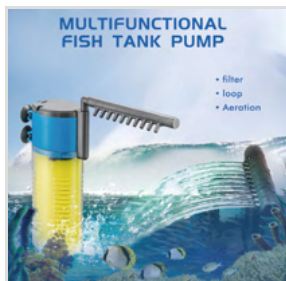


DB-368F /JA-F606



DB-368F /JA-F606

MULTI-FUNCTION INTERNAL FILTER



Strong filtration

The filter box can be placed to filter cotton, activated carbon, filter material, etc.

- Replace the filter carbon core



DB-1105F



DB-1108F



DB-1120F

DB SERIES INFORMATION:

Model	Power	Max. output	Max. pump height	Product Size
DB-1105F	5W	53GPH	3'3"	5 3/4" L × 2 1/4" W × 5 1/8" H
DB-1108F	8W	185GPH	3'11"	7 3/4" L × 2 5/8" W × 6 5/8" H
DB-1108F	20W	240GPH	4'11"	8 1/8" L × 3" W × 7 1/4" H

VOLTAGE 110-120V 50/60Hz
220-240V 50/60Hz

PETS' WATER PURIFIER / SPECIAL WATER PUMP

Purify your pets' water with our special water pump purifier. It's a must-have to keep your pets healthy every time they drink water.



SERIES INFORMATION:

Model	Power	Capacity	Size
	1W	0.5GAL	8 1/2"L x 7 1/8"W x 6 1/8"H
Power Input	AC 100-240V 50/60Hz		
Power Output	DC 5V 1A		

VARIABLE FREQUENCY AMPHIBIOUS PUMP

- Amphibious
- Automatic reverse cleaning function
- Gear to adjust
- Large flow
- Automatic fault alarm
- Stop when out of water ,automatically pressurize



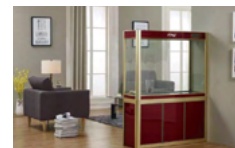
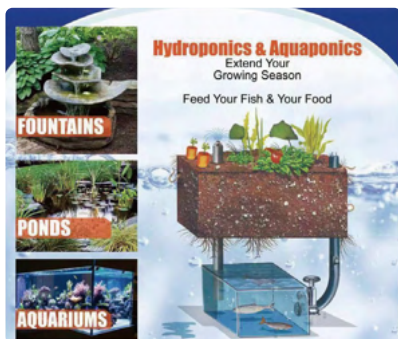
BTC SERIES INFORMATION:

Model	Power	Max. output	Max. pump height	Product Size
BTC-16000	160W	4230GPH	29'6"	12"L×5 1/4"W×7 5/8"H
BTC-22000	250W	5810GPH	32'2"	12"L×5 1/4"W×7 5/8"H
BTC-26000	400W	6870GPH	37'9"	12"L×5 1/4"W×7 5/8"H
BTC-32000	600W	8450GPH	37'9"	12"L×5 1/4"W×7 5/8"H
BTC-36000	480W	9510GPH	39'4"	12"L×5 1/4"W×7 5/8"H
BTC-42000	530W	11100GPH	41'1"	12"L×5 1/4"W×7 5/8"H
BTC-46000	600W	12150GPH	42'8"	12"L×5 1/4"W×7 5/8"H
BTC-52000	650W	13740GPH	44'3"	12"L×5 1/4"W×7 5/8"H

VOLTAGE 110-120V 50/60Hz 220-240V 50/60Hz
DC 24V 36V 48V



SUBMERSIBLE FILTER PUMP



- Perfect for hydroponics, aquaponics, aquatics, ponds & waterfalls, outdoor & tabletop fountains, aquariums & pools.
- High performance, less electricity consumption and larger flow.
- Long pre-filter and sponge inside for better filtration.



DB SERIES INFORMATION:

Model	Power	Max. output	Max. pump height	Product Size
DB-339	8W	160GPH	4'3"	6 5/8" L x 2 1/4" W x 2" H
DB-400	13W	210GPH	5'5"	4" L x 2 1/8" W x 2 1/2" H
DB-438	25W	400GPH	6'11"	4 5/8" L x 2 3/8" W x 2 5/8" H
DB-2000	40W	530GPH	7'3"	6" L x 2 7/8" W x 3 5/8" H
DB-4000	70W	1060GPH	13'1"	6 7/8" L x 2 7/8" W x 5 1/4" H
DB-5000	100W	1310GPH	13'1"	6 7/8" L x 3 1/2" W x 4 1/2" H

VOLTAGE 110-120V 50/60Hz
220-240V 50/60Hz



AQUARIUM LOW SUCTION PUMP



Aquarium water circulation



Watering plant



Fountain



Simulate natural environment

AQ SERIES INFORMATION:

Model	Power	Max. output	Max. pump height	Product Size
AQ-600	9W	160GPH	3'11"	3 1/8"L x 2 1/2"W x 4 1/8"H
AQ-1000	25W	264GPH	6'6"	4"L x 3 3/8"W x 4 7/8"H



AQ SERIES INFORMATION:

Model	Power	Max. output	Max. pump height	Product Size
AQ-1600	40W	396GPH	8'2"	5 1/8"L x 4"W x 6 1/4"H
AQ-2600	60W	660GPH	9'10"	5 1/2"L x 4 3/8"W x 6 1/4"H



AQ SERIES INFORMATION:

Model	Power	Max. output	Max. pump height	Product Size
AQ-3600	75W	924GPH	11'5"	5 1/2"L x 4 3/8"W x 6 1/4"H
AQ-4600	90W	1188GPH	13'1"	6 7/8"L x 5 1/4"W x 7 1/4"H
AQ-5600	125W	1452GPH	16'4"	6 7/8"L x 5 1/4"W x 7 1/4"H



FISH TANK MAGNETIC BRUSH



Non-slip handshake



Scratch synchronization



Stainless steel algae scraper for glass aquarium



Acrylic aquarium special plastic algae scraping knife



Aquarium glass



"Slide" through the aquarium glass. Slide slowly to close.



90°



Due to the strong magnetic force of the product, it is necessary to rotate the two brush surfaces to 90 degrees when opening, and then forcibly break apart; Do not get your hands too close after separation to avoid pinching your fingers.



SERIES INFORMATION:

Model	Magnetic brush specifications	Blade specifications	Suitable for fish tank glass thickness
NEW-S	4 3/4" L × 2" W × 2" H	1 3/4" L × 1/2" W × 1/8" H	≤ 3/8"
NEW-M	4 1/2" L × 2 3/8" W × 2 3/8" H	2 1/8" L × 5/8" W × 1/4" H	≤ 5/8"
NEW-L	6 1/2" L × 2 3/4" W × 2 3/4" H	2 1/2" L × 3/4" W × 1/4" H	≤ 3/4"

AQUARIUM LOW SUCTION PUMP

AD SERIES INFORMATION:

Model	Power	Output	Pressure	Product Size
AD-101	3W	3L/min	0.02Mpa	4"L×2 1/8"W×1 3/8"H
AD-102	5W	3.5L/min	0.018Mpa	4 3/4"L×2 3/4"W×2 1/8"H
AD-103	8W	2×4L/min	0.018-0.02Mpa	5 7/8"L×3"W×2 3/8"H
AD-104	10W	2×4.5L/min	0.02-0.024Mpa	6 1/4"L×3 3/8"W×2 3/4"H
AD-105	12W	4×4.5L/min	0.018-0.022Mpa	7 1/8"L×5 3/4"W×2 3/4"H
AD-106	14W	4×6L/min	0.02-0.026Mpa	7 1/8"L×5 3/4"W×2 3/4"H



AD-101



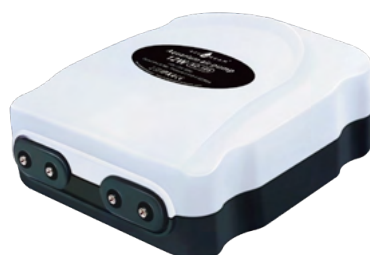
AD-102



AD-103



AD-104



AD-105



AD-106

ATOMIZER / MIST MAKER FOGGER / HUMIDIFIER



This atomizer/mist maker / fogger is perfect for almost any humidification application. You simply add it to your rockery, water tank, vase, or birdbath. In addition, it helps to filter bad odors with its electro-ultrasonic technology.

SERIES

INFORMATION:

Model	Diameter	Heigh	Disc	Cable length
MMB-12LED	1 3/4"	1 1/8"	5/8"	82 5/8"
MMZ-12LED	1 3/4"	1 1/8"	5/8"	82 5/8"

Input: 110-250 V (50 / 60 Hz)

Output: 24 V DC



MMB-12LED



MMZ-12LED

SERIES

INFORMATION:

Model	Atomization amount	Diameter	Heigh	Disc	Cable length
MMB-001	≥80GPH /≥110GPH	1 3/8"-1 3/4"	1 5/8"-1 3/4"	5/8"	82 5/8"
MMB-002	≥80GPH /≥110GPH	1 3/8"-1 3/4"	1 5/8"-1 3/4"	5/8"	82 5/8"

Input: 110-250 V (50 / 60 Hz)

Output: 24 V DC

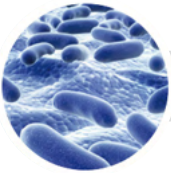


MMB-001



MMB-002

FILTER MEDIA



Rapid culture of nitrifying bacteria



Remove odors from the water



High efficiency filtered water



100pcs 1" Bio Balls Aquarium Fish Nano Tank Wet/Dry Canister Filter Media w/ bag.

SERIES INFORMATION:

Model	Material	Qty/Box	G.W	N.W
300g (0.71B) /box ceramic ring	quartz sand	300g (0.71B) /box	43.41B	36.41B



AD SERIES INFORMATION:

Model	Sponge size	Liter and below	G.W	N.W
AD-2822	Φ2 3/8" L × 4 3/4" W × 3/4" H	≤53GAL	13.91B	11.91B
AD-2831	Φ2" L × 3 1/8" W × 3/4" H	≤32GAL	14.61B	13.41B



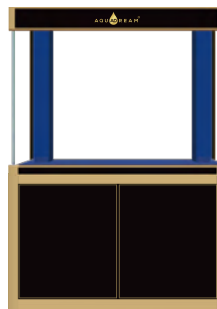
AD-2822



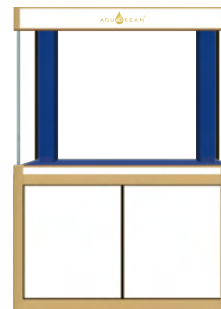
AD-2831

TEMPERED GLASS AQUARIUM

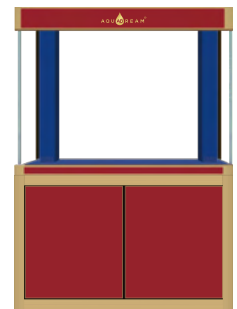
Includes the stand, pump, filter media in the wet dry box, pipelines, overflow and LED lights.



AD-1060 BK



AD-1060 WT



AD-1060 RD

AD SERIES INFORMATION:

Model	Aquarium Size	Cabinet Size	Pump	Capacity
AD-1060	39 3/8" L × 19 3/4" W × 31 1/2" H	39 3/8" L × 19 3/4" W × 29 1/2" H	JD-3500	100 Gallon

Color Black/White/Red



AD-1260/1560 BK



AD-1260/1560 WT



AD-1260/1560 RD

AD SERIES INFORMATION:

Model	Aquarium Size	Cabinet Size	Pump	Capacity
AD-1260	47 1/4" L × 19 3/4" W × 31 1/2" H	47 1/4" L × 19 3/4" W × 29 1/2" H	JD-4500	135 Gallon
AD-1560	59" L × 19 3/4" W × 31 1/2" H	59" L × 19 3/4" W × 29 1/2" H	JD-5500	175 Gallon

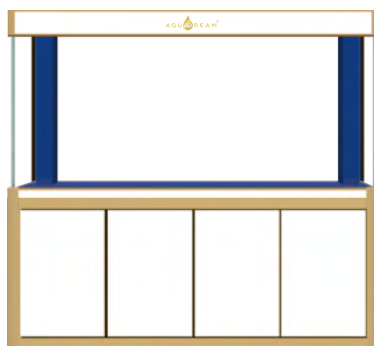
Color Black/White/Red

TEMPERED GLASS AQUARIUM

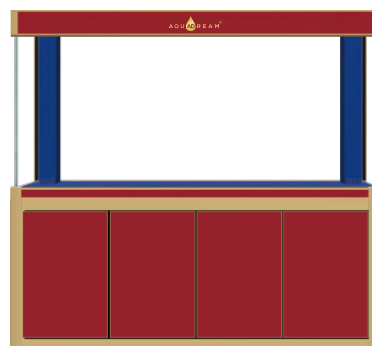
Includes the stand, pump, filter media in the wet dry box, pipelines, overflow and LED lights.



AD-1760/1980 BK



AD-1760/1980 WT



AD-1760/1980 RD

AD SERIES INFORMATION:

Model	Aquarium Size	Cabinet Size	Pump	Capacity
AD-1760	69 1/4" L × 23 5/8" W × 31 1/2" H	69 1/4" L × 23 5/8" W × 29 1/2" H	JD-5500	220 Gallon
AD-1980	78" L × 23 5/8" W × 31 1/2" H	78" L × 23 5/8" W × 29 1/2" H	JD-6500	250 Gallon

Color Black/White/Red



AD-2300 BK

AD SERIES INFORMATION:

Model	Aquarium Size	Cabinet Size	Pump	Capacity
AD-2300	90 1/2" L × 26 3/4" W × 35" H	90 1/2" L × 26 3/4" W × 30" H	JD-8500	394 Gallon

Color Black

TEMPERED GLASS AQUARIUM

Includes the stand, pump, filter media in the wet dry box, pipelines, overflow and LED lights.



AD-620 ABK

AD-620 WO

AD-620 RW

AD SERIES INFORMATION:

Model	Aquarium Size	Cabinet Size	Pump	Capacity
AD-620	23 5/8"L x 14 1/8"W x 25 5/8"H	23 5/8"L x 14 1/8"W x 25 5/8"H	DB-6612	40 Gallon

Color Black/White oak/Red wood



AD-860/1060 ABK

AD-860/1060 WO

AD-860/1060 RW

AD SERIES INFORMATION:

Model	Aquarium Size	Cabinet Size	Pump	Capacity
AD-860	31 1/2"L x 14 1/8"W x 25 5/8"H	31 1/2"L x 14 1/8"W x 25 5/8"H	DB-6618	50 Gallon
AD-1060	39 3/8"L x 19 3/4"W x 30 3/4"H	39 3/8"L x 19 3/4"W x 29 1/2"H	JD-3500	83 Gallon

Color Black/White oak/Red wood



AD-1260/1560 ABK

AD-1260/1560 WO

AD-1260/1560 RW

AD SERIES INFORMATION:

Model	Aquarium Size	Cabinet Size	Pump	Capacity
AD-1260	47 1/4"L x 19 3/4"W x 30 3/4"H	47 1/4"L x 19 3/4"W x 29 1/2"H	JD-3500	116 Gallon
AD-1560	59"L x 19 3/4"W x 30 3/4"H	59"L x 19 3/4"W x 29 1/2"H	JD-4500	156 Gallon

Color Black/White oak/Red wood

TEMPERED GLASS AQUARIUM

Includes the stand, pump, filter media in the wet dry box, pipelines, overflow and LED lights.



AD-1560 BROWN



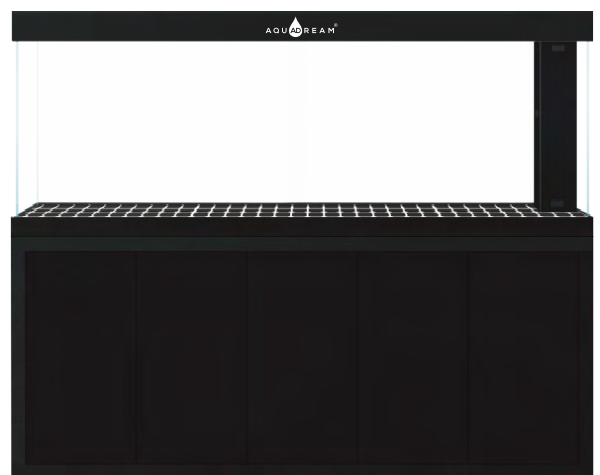
AD-1260/1530 SILVER

AD SERIES

INFORMATION:

Model	Aquarium Size	Cabinet Size	Pump	Capacity
AD-1560 BROWN	59"L × 19 3/4"W × 35 3/8"H	59"L × 19 3/4"W × 27 1/2"H	JD-5500	149 Gallon
AD-1260 SILVER	47 1/4"L × 19 3/4"W × 31 1/2"H	47 1/4"L × 19 3/4"W × 31 1/2"H	JD-4500	133 Gallon
AD-1530 SILVER	60 1/4"L × 23 5/8"W × 31 1/2"H	60 1/4"L × 23 5/8"W × 31 1/2"H	JD-5500	165 Gallon

Color Brown/Silver



AD-2320 BP

AD SERIES

INFORMATION:

Model	Aquarium Size	Cabinet Size	Pump	Capacity
AD-2320 BP	91 3/8"L × 26 3/4"W × 31 1/2"H	91 3/8"L × 26 3/4"W × 33 1/2"H	JD-7500	394 Gallon

Color Black

TEMPERED GLASS AQUARIUM

Includes the stand, pump, filter media in the wet dry box, pipelines, overflow and LED lights.

AD SERIES INFORMATION:

Model	Aquarium Size	Cabinet Size	Pump	Capacity
AD-1060 WS	39 3/8"L×21 5/8"W×31 1/2"H	39 3/8"L×21 5/8"W×29 1/2"H	JD-3500	110 Gallon

Color White Silver



AD-1060 WS

AD SERIES INFORMATION:

Model	Aquarium Size	Cabinet Size	Pump	Capacity
AD-1260 WS	47 1/4"L×21 5/8"W×31 1/2"H	47 1/4"L×21 5/8"W×29 1/2"H	JD-4500	133 Gallon
AD-1560 WS	59"L×21 5/8"W×31 1/2"H	59"L×21 5/8"W×29 1/2"H	JD-5500	165 Gallon

Color White Silver



AD-1260/1560 WS

AD SERIES INFORMATION:

Model	Aquarium Size	Cabinet Size	Pump	Capacity
AD-1760 WS	69 1/4"L×26 3/4"W×32 1/4"H	69 1/4"L×26 3/4"W×29 1/2"H	JD-5500	219 Gallon
AD-1980 WS	78"L×26 3/4"W×32 1/4"H	78"L×26 3/4"W×29 1/2"H	JD-6500	252 Gallon

Color White Silver



AD-1760/1980 WS

SALT WATER & MARINE CORAL REEF AQUARIUM

All Reef Aquarium models include the stand, glass tank, sump system, and pipes. Certain models also come bundled with a pump, filter media, protein skimmer, and LED lights.



REEF-450/500/600-WT



REEF-800-WT



REEF-860-ABK

REEF SERIES INFORMATION:

Model	Aquarium Size	Cabinet Size	Capacity
REEF-450-WT	17.7(L) x 17.7(W) x 17.7(H) inches	17.7(L) x 17.7(W) x 17.7(H) inches	37 Gallon
REEF-500-WT	19.7(L) x 19.7(W) x 19.7(H) inches	19.7(L) x 19.7(W) x 33.9(H) inches	50 Gallon
REEF-600-BK	23.6(L) x 19.7(W) x 19.7(H) inches	23.6(L) x 19.7(W) x 33.9(H) inches	63 Gallon
REEF-800-WT	31.5(L) x 19.7(W) x 21.7(H) inches	31.5(L) x 19.7(W) x 33.9(H) inches	90 Gallon
REEF-860-ABK	31.5(L) x 19(W) x 19.75(H) inches	31.5(L) x 19(W) x 33.5(H) inches	50 Gallon



REEF-1060-WT



REEF-900-BK



REEF-1000-WT



REEF-1200-BK



REEF-1260-SILVER

REEF SERIES INFORMATION:

Model	Aquarium Size	Cabinet Size	Capacity
REEF-900-WT	35.4(L) x 19.7(W) x 21.7(H) inches	35.4(L) x 19.7(W) x 33.9(H) inches	100 Gallon
REEF-1060-BK	39 3/8 (L) x 24 (W) x 19 3/4 (H) inches	39 3/8 (L) x 19 3/4 (W) x 33 1/2 (H) inches	100 Gallon
REEF-1000-WT	39.4(L) x 19.7(W) x 21.7(H) inches	39.4(L) x 19.7(W) x 33.9(H) inches	115 Gallon
REEF-1200-BK	47.2(L) x 21.7(W) x 19.7(H) inches	47.2(L) x 21.7(W) x 33.9(H) inches	130 Gallon
REEF-1260-SILVER	40 1/8 (L) x 24 (W) x 19 3/4 (H) inches	47 (L) x 19 3/4 (W) x 33 1/2 (H) inches	135 Gallon

SALT WATER & MARINE CORAL REEF AQUARIUM & PLANTS RANCHU AQUARIUM

All Reef Aquarium models include the stand, glass tank, sump system, and pipes. Certain models also come bundled with a pump, filter media, protein skimmer, and LED lights.



REEF-1560-BL



AD-1560-RANCHU



REEF-1500-WT



REEF-1800-BK



REEF-2000-BK

SERIES INFORMATION:

Model	Aquarium Size	Cabinet Size	Capacity
REEF-1560-BL	59 (L) x 24 (W) x 19.75 (H) inches	59 (L) x 19.75 (W) x 33.5 (H) inches	175 Gallon
AD-1560-RANCHU	59(L) x 19.75(W) x 19.75(H) inches	59(L) x 19.75(W) x 33.5(H) inches	175 Gallon
REEF-1500-WT	59.1(L) x 23.6(W) x 23.6(H) inches	59.1(L) x 23.6(W) x 33.9(H) inches	185 Gallon
REEF-1800-BK	70.9(L) x 23.6(W) x 23.6(H) inches	70.9(L) x 23.6(W) x 33.9(H) inches	220 Gallon
REEF-2000-BK	78.7(L) x 23.6(W) x 23.6(H) inches	78.7(L) x 23.6(W) x 33.9(H) inches	250 Gallon



LED CORAL LIGHT SERIES

INFORMATION:

Model	Product Size	Package Size
AD-A8-LEDREEF	7.99(L) x 7.99(W) x 1.54(H) inches	18.5(L) x 18.1 (W) x 13.78(H) inches

SALT WATER & MARINE CORAL REEF AQUARIUM

Protein skimmers are a vital component to any Coral Reef Aquarium setup. We offer a wide variety of skimmers to take on any aquarium and bio-load size.



AD-N100PLUS



AD-N130 PLUS



AD-N170PLUS



AD-N230 PLUS



AD-C7PLUS

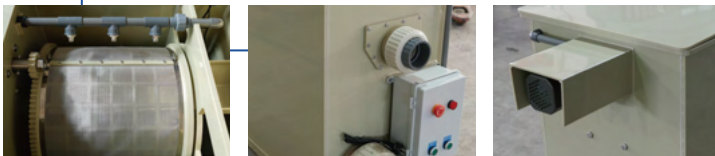
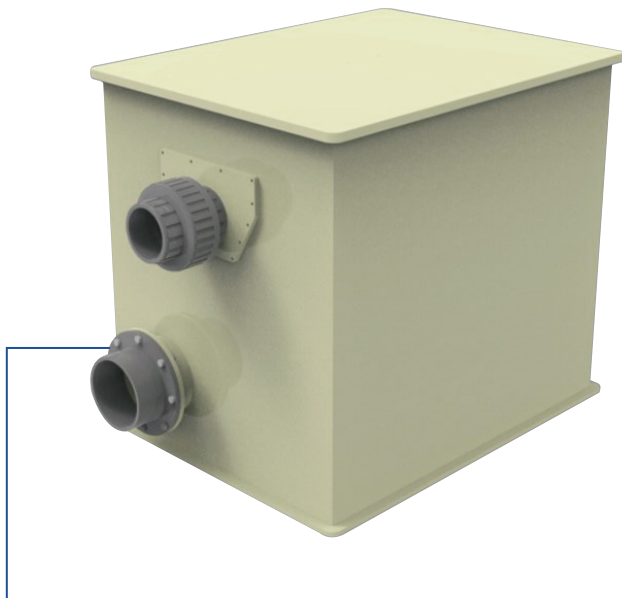
SERIES INFORMATION:

Model	Power	Pump	Max. output	Maximum air intake	Treated water volume	Applicable water body	Best water level	Recommended Tank Sizes	Product Size
AD-N100PLUS	7W	HP-1000	264Gal/h	79Gal/h	185Gal/h	40-80Gal	6.7-7.5 Inches	35-75GAL	5.5(L) x 4.3(W) x 17.7(H) inches
AD-N130 PLUS	12W	HP-1500	396Gal/h	159Gal/h	238Gal/h	105-185Gal	6.7-7.9 Inches	70-150GAL	7.9(L) x 7.5(W) x 19.1(H) inches
AD-N170PLUS	25W	HP-2500	660Gal/h	238Gal/h	423Gal/h	132-264Gal	7-8.7 Inches	100-210GAL	9.1(L) x 8.3(W) x 20.9(H) inches
AD-N230 PLUS	35W	HP-4000	1057Gal/h	383Gal/h	687Gal/h	210-528Gal	7-8.7 Inches	170-370GAL	11.2(L) x 10.2(W) x 23.6(H) inches
AD-C7PLUS	60W	HP-6000	1585Gal/h	476Gal/h	1110Gal/h	264-687Gal	8.3-9.4 Inches	200-500GAL	12.6(L) x 13.4(W) x 26(H) inches

VOLTAGE DC 24V

DRUM FILTRATION SYSTEM - T SERIES

This drum filtration system is an automated cleansing machine suited for various application including KOI ponds. It removes suspended solids as well as colloids present in ponds. These unwanted substances are sieved out of the water passing through the 70-micron food grade stainless steel mesh. Collected substances are flush off with high powered pump coupled with wide-angle water injectors and drained into sewage system. With your purchase of drum filtration system, you no longer need to perform painstaking filter or media cleaning tasks. All these are taken care by our drum filter leaving your pond with crystal clear and optimum water parameters.



Scene application

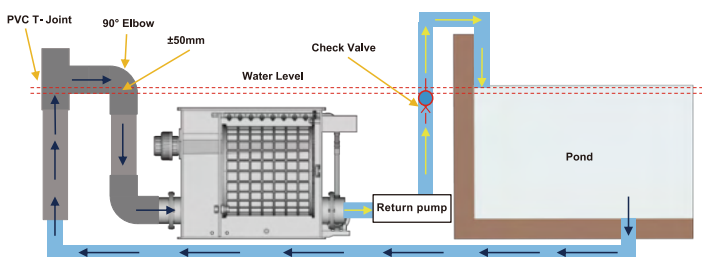


Product features

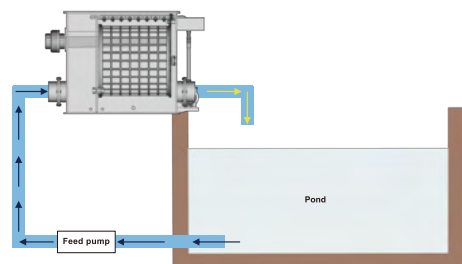
- Small footprint, large filtering area, small mesh aperture, low resistance, good filtering effect.
- Easy installation, stable operation, low energy consumption, high efficiency, easy operation and management.
- 74 microns 316 food grade durable stainless steel filter mesh.
- Whole construct is produced with UV resistance PP material; overall sturdiness is suitable for both indoor and outdoor usage.
- Automatic and manual modes, in automatic mode backwash will activate automatically when filter mesh is blocked, in manual mode backwash time can be determined by user;
- No disassembly required, automatic filter mesh cleaning; easy installation and operation.
- Widely used in aquaculture raw water treatment system, suspended matter mechanical filtration, aquaculture farm wastewater related treatment and other aquaculture water environment.
- Images may differ from the actual product.

Installation

• GRAVITY FEED



• FORCED FEED



Technical Specifications



T20-60



T80



T100-500

T-Series

Product	Dimensions (mm)			Water Intake	Water Outlet	Effluent Outlet	Drivetrain (w)	Injector Pump (w)	Capacity (Upto)
	L	D	H	DN/Sch 80	DN/Sch 80	DN/Sch 80			
T3/T5	640	345	380	32mm/1"	50mm/1.5"	50mm/1.5"	6	60	≤ 5吨
T10	905	465	520	75mm/2.5"	75mm/2.5"	50mm/1.5"	90	96	≤ 10吨
T30	1005	570	770	110mm/4"	110mm/4"	75mm/2.5"	90	96	≤ 30吨
T50	1250	825	820	110mm/4"	110mm/4"	75mm/2.5"	120	370	≤ 50吨
T60	1340	700	825	110mm/4"	110mm/4"	75mm/2.5"	120	370	≤ 60吨
T80	1340	800	865	160mm/6"	160mm/6"	75mm/2.5"	120	370	≤ 80吨
T100	1600	1150	1040	160mm/6"	160mm/6"	110mm/4"	370	750	≤ 100吨
T150	2050	1150	1040	160mm/6"	160mm/6"	110mm/4"	750	750	≤ 150吨
T200	2180	1300	1300	225mm/8"	225mm/8"	110mm/4"	750 (380V)	750	≤ 200吨
T250	2180	1300	1300	225mm/8"	225mm/8"	110mm/4"	1100 (380V)	750	≤ 250吨
T300	2480	1300	1300	225mm/8"	225mm/8"	110mm/4"	1500 (380V)	1100	≤ 300吨
T500	TBA	TBA	TBA	315mm/12"	315mm/12"	110mm/4"	2200 (380V)	1500	≤ 500吨

BIOLOGICAL DRUM FILTRATION SYSTEM - BTS SERIES

This biological drum filtration system is an automated cleansing machine with built in biological filtration suited for various application including KOI ponds. It removes suspended solids; colloids as well as harmful ammonia and nitrates. Unwanted solids and colloids are sieved out of the water passing through the 70-micron food grade stainless steel mesh. Collected substances are flush off with wide-angle water injectors and drained into sewage system. Thereafter filtered water goes thru biological filter media removing ammonia and nitrates. With your purchase of biological drum filtration system, you no longer need to perform painstaking filter or media cleaning tasks. All these are taken care by our biological drum filter leaving your pond with crystal clear and optimal water parameters.

Scene application

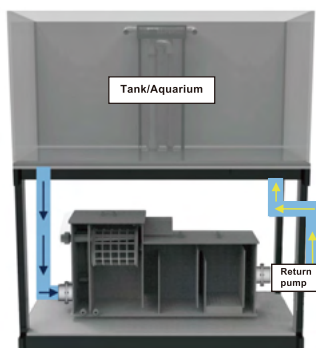


Product features

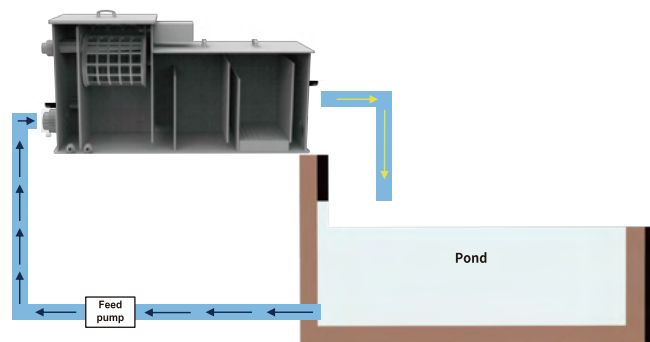
- 74 microns 316 food grade durable stainless steel filter mesh, No disassembly required, automatic filter mesh cleaning.
- Whole construct is produced with UV resistance PP material; overall sturdiness is suitable for both indoor and outdoor usage.
- Easy installation, stable operation, low energy consumption, high efficiency, easy operation and management.
- Automatic and manual modes, in automatic mode backwash will activate automatically when filter mesh is blocked, in manual mode backwash time can be determined by user;.
- Biological filtration, rapid bacterial culture, filter impurities in water, establish nitrification system; Algae removal, odor removal, purify water.
- Widely used in aquaculture raw water treatment system algae and suspended matter mechanical filtration, aquaculture farm wastewater related treatment and other aquaculture water environment.
- Images may differ from the actual product.

Installation

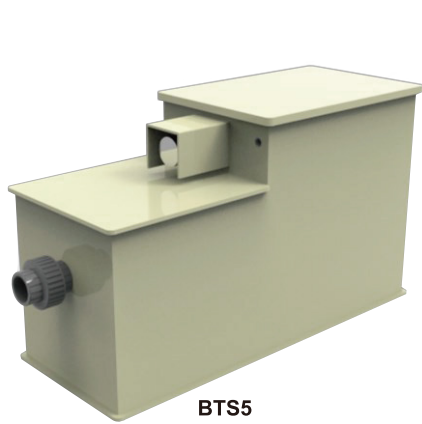
• GRAVITY FEED



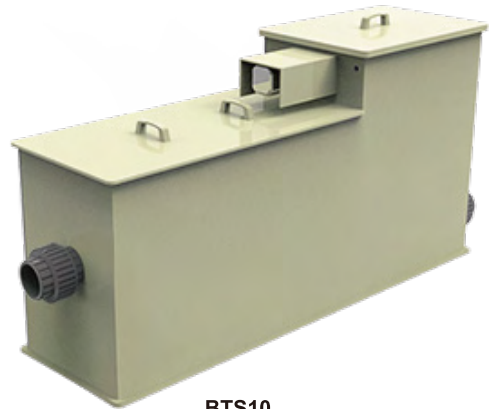
• / FORCED FEED



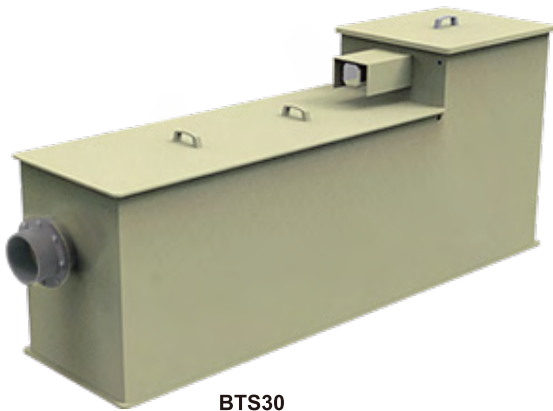
Technical Specifications



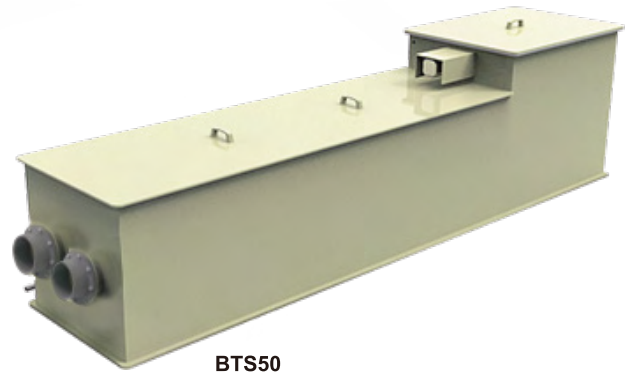
BTS5



BTS10



BTS30



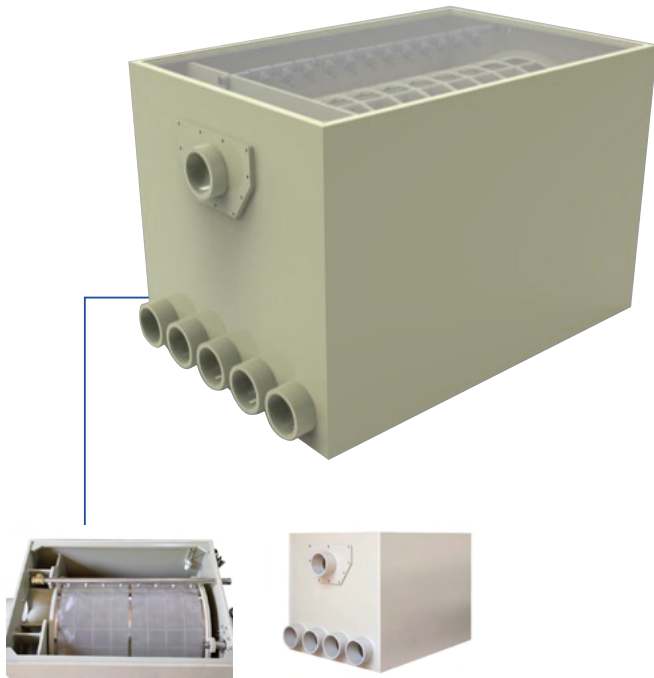
BTS50

BTS Series

Product	Dimensions (mm)			Water Intake DN/Sch 80	Water Outlet DN/Sch 80	Effluent Outlet DN/Sch 80	Biological Chamber		UV Light (w)	Drivetrain (w)	Injector Pump (w)	Capacity (Upto)
	L	D	H				Filter Mat	Bacteria House				
BTS5	1030	345	505	32mm / 1"	50mm / 1.5"	50mm / 1.5"	1PC	64PCS	30	6	60	≤ 5吨
BTS10	1715	465	806	90mm/ 3"	90mm/ 3"	50mm / 1.5"	7PCS	160PCS	2 × 30	60	96	≤ 10吨
BTS30	2340	570	910	110mm/4"	110mm/4"	75mm/2.5"	16PCS	208PCS	2 × 30	90	96	≤ 30吨
BTS50	3295	825	825	2 × 110mm/4"	2 × 110mm/4"	75mm/2.5"	21PCS	544PCS	4 × 30	120	370	≤ 50吨

DRUM FILTRATION SYSTEM - TS SERIES

This biological drum filtration system is an automated cleansing machine with built in biological filtration suited for various application including KOI ponds. It removes suspended solids; colloids as well as harmful ammonia and nitrates. Unwanted solids and colloids are sieved out of the water passing through the 70-micron food grade stainless steel mesh. Collected substances are flush off with wide-angle water injectors and drained into sewage system. Thereafter filtered water goes thru biological filter media removing ammonia and nitrates. With your purchase of biological drum filtration system, you no longer need to perform painstaking filter or media cleaning tasks. All these are taken care by our biological drum filter leaving your pond with crystal clear and optimal water parameters.



Scene application

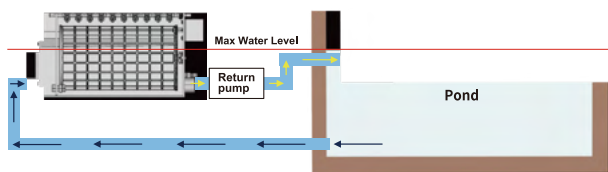


Product features

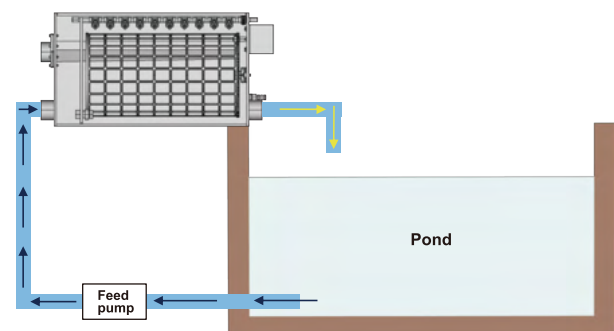
- 74 microns 316 food grade durable stainless steel filter mesh, No disassembly required, automatic filter mesh cleaning.
- Whole construct is produced with UV resistance PP material; overall sturdiness is suitable for both indoor and outdoor usage.
- Easy installation, stable operation, low energy consumption, high efficiency, easy operation and management;
- Automatic and manual modes, in automatic mode backwash will activate automatically when filter mesh is blocked, in manual mode backwash time can be determined by user.
- Sterilization and mildew, algae and green removal, deodorization and antiseptic, purification of water quality.
- Widely used in aquaculture raw water treatment system algae and suspended matter mechanical filtration, aquaculture farm wastewater related treatment and other aquaculture water environment.
- Images may differ from the actual product.

Installation

• GRAVITY FEED



• FORCED FEED



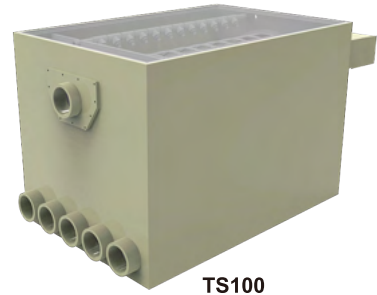
Technical Specifications



TS20-30



TS35-80S



TS100



TS120



TS160



TS200

TS Series

Product	Dimensions (mm)			Water Intake	Water Outlet	Effluent Outlet	Drivetrain (w)	Injector Pump (w)	Capacity (Upto)
	L	D	H	DN/Sch 80	DN/Sch 80	DN/Sch 80			
TS20	610	345	380	2 x 90mm/3"	2 x 90mm/3"	90mm/3"	40	90	≤ 20吨
TS30	760	465	520	2 x 110mm/4"	2 x 110mm/4"	90mm/3"	60	90	≤ 30吨
TS35	810	570	770	4 x 110mm/4"	4 x 110mm/4"	110mm/4"	60	90	≤ 35吨
TS60	1060	825	820	4 x 110mm/4"	4 x 110mm/4"	110mm/4"	90	100	≤ 60吨
TS80	1260	700	825	4 x 110mm/4"	4 x 110mm/4"	110mm/4"	120	120	≤ 80吨
TS80S	1060	800	865	4 x 110mm/4"	4 x 110mm/4"	110mm/4"	120	120	≤ 80吨
TS100	1260	1150	1040	5 x 110mm/4"	5 x 110mm/4"	110mm/4"	120	250	≤ 100吨
TS120	1060	1150	1040	7 x 110mm/4"	7 x 110mm/4"	110mm/4"	2 x 120	370	≤ 120吨
TS160	2180	1300	1300	8 x 110mm/4"	8 x 110mm/4"	110mm/4"	2 x 120	370	≤ 160吨
TS200	2180	1300	1300	10 x 110mm/4"	10 x 110mm/4"	110mm/4"	2 x 120	750	≤ 200吨

TS30 above model will does not come with injector pump, injector pump is sold separately.

- Non - Submersible pump should be purchased when drum filter is placed in dry land area.
- Submersible Deep Well pump should be purchased when drum filter is placed in pond/wet filter area.

VTS Series - Integrated biological fluidized bed microfilt



Product features

VTS series drum filters are coupled with MBBR chamber for your mechanical and biological filtration system needs. This system maximizes oxygen concentration while enabling organic waste degradation. This product is also produced with food grade material and 70-micron 316 stainless steel filter mesh.

DTS Series integral drip type microfilter



Product features

DTS series drum filters coupled with trickle system is a great filtration system that will stabilize pH level and provide great mechanical and biological filtration for your life stock. Like its predecessor DTS series is also produced with food grade material and 70-micron 316 stainless steel filter mesh.

PROTEIN SKIMMER - STP SERIES

Large amount of Air (Ozone) and Water is injected into the Protein skimmer thru specialized injector/s, surface tension of these micro/nano bubbles pushes suspended protein particles into the collection cup and finally discharged through discharge outlet.



Scene application



Product features

- Protein skimmer can quickly remove the residual feed, feces and other dissolved organic matter in the water before it is decomposed into ammonia hydrogen, nitrite and other toxic substances, prevents toxic substances in build up the water; Remove organic acids to stabilize pH; Removal of humic substances to increase water clarity.
- Equipment can be washed and completely drained for storage when not in use, this prevents bacteria breeding ensuring a clean and hygienic equipment.
- Ozone can be injected into the protein skimmer to disinfect, sterilize and remove algae from water, improving the effect of protein skimmer. Foam is collected in the collection cup, and discharged through discharge outlet.
- It is fitted with dual flush system that ensures our protein skimmer is kept at optimum performance level with minimum maintenance.
- Images may differ from the actual product.

Usage:

Widely used in high density indoor aquaculture farms.

Nurseries and ornamental fish breeding facilities.

Temporary seafood holding facilities.

Public aquarium water treatment projects, seafood and fishpond projects.

Technical Specifications



STP400



STP600



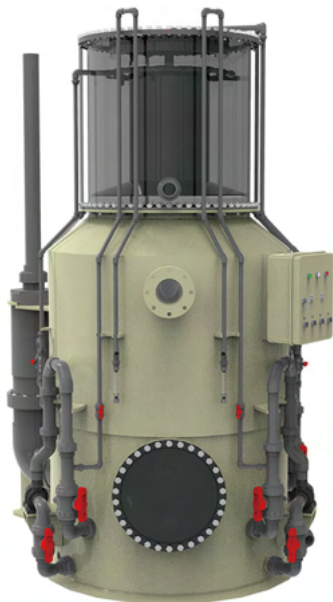
STP750



STP950



STP1200



STP1500



STP2000

STP-Series

Product	Power Consumption (w)	Inlet (mm)	Outlet (mm)	Waste Discharge Outlet (mm)	Max. Ozone (gr/h)	Dimensions (mm)			Water Inlet Height (mm)	Water Outlet Height (mm)	Recommended Feed Pump (L/h)	Retention per 1 min	Retention per 1.5min	For Tank m ³
						L	D	H						
STP400	200	50	75	40	3	670	625	1935	1160	1020	7000	10000	7000	6-15
STP600	400	75	110	50	5	925	945	2280	1230	1080	15000	22000	15000	15-25
STP750	450	90	140	50	10	1115	1010	2455	1215	1050	26000	38000	26000	25-50
STP950	750	110	160	63	10	1315	1275	2865	1600	1320	55000	78000	55000	50-100
STP1200	1200	160	200	75	12	1780	1785	3200	1750	1530	90000	125000	90000	80-150
STP1500	1600	160	225	75	20	2125	2100	3480	1780	1320	130000	200000	130000	150-250
STP2000	2000	225	280	90	40	2410	2520	3475	1560	1320	230000	400000	230000	250-400



Aquaculture protein skimmer is the "kidney" of Marine aquaculture system, is an essential filtration equipment. It can separate 80% of harmful substances, nitrogen, harmful salts, suspended substances, etc., which can greatly improve water quality.



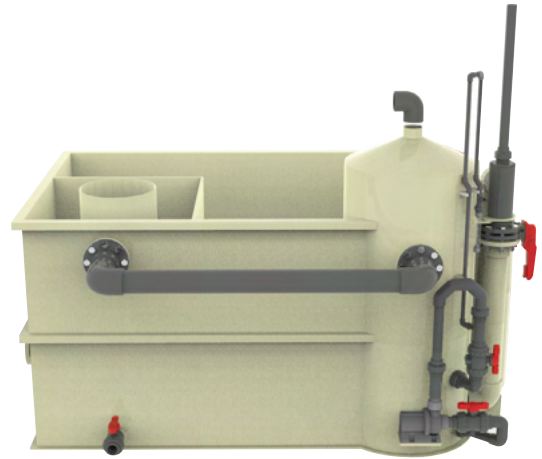
The protein skimmer produces abundant, delicate bubbles that trap organic impurities in the water, forming a foam that sticks to the surface and is then expelled.

Integrated System

Integrated System-1(IS-1)/Integrated System-2(IS-2) – This integrated series is featured with Drum filter, UV, Protein Skimmer and MBBR, a great combination of mechanical, biological and disinfecting solution for your precious life stock.



Integrated System-1(IS-1)



Integrated System-2(IS-2)

Product features

- One station filtration system for your mechanical, biological and disinfecting solution.
- Automated drum filtration removes large particles from water.
- UV disinfects and kills bacteria.
- Protein skimmer removes dissolved organics.
- MBBR assist with removal of ammonia and nitrite thus stabilizing Ph and oxygen levels.
- Images may differ from the actual product.

Moving Bed Biofilm Reactor - MBBR



Product features

- MBBR is a biological filter produced to provide biological filtration and maximize oxygen concentration while enabling organic waste degradation.
- Our MBBR is made with UV resistance PP therefore it is ozone and UV rays safe.
- MBBR media volume ranges from 45L to 5000L per reactor, driving these reactors are DC powered pumps thus power consumption is minimized without sacrificing performance. (Images may differ from the actual product.)

FISH POND FILTER DRIP BOX - BK SERIES

Fish pond filter drip box is mainly by the pump to pump water from the fish pond to the top of the drip box, when the top water is full, the water will be full, the water slowly drops into the first layer of drip tank naturally; Evenly distributed through the drip plate; Water flow or drip or flow through the filter material; Then it flows into the second drip tank. When the water reaches the bottom of the third layer of the trickle filter tank, it flows directly to the fish pond through the outlet. When the water flows through, it will increase the contact surface with the air and thus increase the dissolved oxygen in the water, providing an ideal living environment for aerobic bacteria.



Scene application



Product features

- The working principle of trickle filtration is: the water is pumped from the fish pond to the top of the drip tank by the pump. When the top water is full, the water will fully drain and the water will slowly drop into the first drip tank naturally.
- Evenly distributed through the drip plate; Water flow or drip or flow through the filter material; Then it flows into the second drip tank. When the water reaches the bottom of the third layer of the trickle filter tank, it flows directly to the fish pond through the outlet. When the water flows through, it will increase the contact surface with the air and thus increase the dissolved oxygen in the water, providing an ideal living environment for aerobic bacteria.
- Trickle filtration is an integrated filter, which mainly integrates physical filtration and biological filtration into a filter tank, which is divided into several layers. The upper layer of the filter tank is a physical filtration layer, and the main filter materials are filter cotton and biochemical cotton. The following layers will be placed biochemical ball, rattan cotton, glass ring, quartz ball, bacterial house and other filter materials.\
- Images may differ from the actual product.

Technical Specifications



BK-Series

Product	Dimensions (mm)			Number of cases	Size of water intake (mm)	Outlet size (mm)		
	L	D	H			L	D	H
BK28	711.2	450	1081	4	DN90	551	105	43
BK38	965.2	450	1081	4	DN90	765	105	43
BK60	1524	450	1081	4	DN90	1324	105	43
BK120	2800	450	822	3	DN90	2600	105	43

SOLID-LIQUID SEPARATOR

The solid-liquid separator adopts vortex separation design to improve the vortex rotation speed of water in the pool. Centrifugation and gravity were used to remove large particles of residual bait feces to accelerate the settling speed of solid particles and shorten the settling time. Facilitate the collection and discharge of solid waste; In order to avoid the subsequent treatment pipeline blockage and corrosion of equipment, but also reduce the local head loss of the pipeline, save energy consumption of the system.



Scene application



Product features

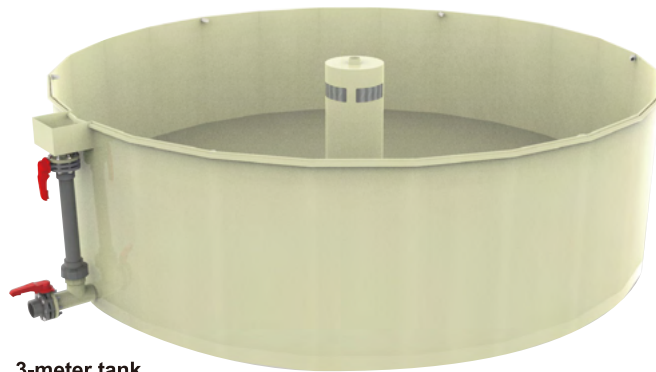
Centrifugal action and gravity action can be used to remove large particles of residual bait feces, so as not to cause the subsequent treatment unit pipeline blockage and corrosion of equipment, but also to reduce the local head loss of the pipeline and save energy consumption of the system.(Images may differ from the actual product.)

PP AQUACULTURE TANK

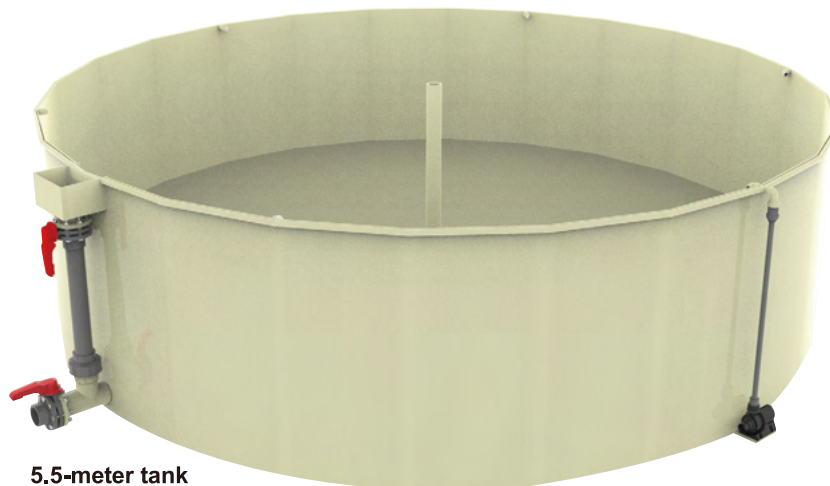
PP aquaculture tank is designed for industrial recycling aquaculture treatment system, hatching and rearing, shrimp aquaculture, temporary cultivation and a non-toxic environmental protection, long service life, smooth surface, corrosion resistance, aging resistance, leakage, high strength of the special fish tank. Widely used in factory aquaculture seedling, fish recycling aquaculture engineering equipment. Cultivation of ornamental fish, experiment of aquatic research Institute, maintenance system engineering of aquarium.

Product features

- Breeding pool using PP sheet, with good pressure resistance and impact resistance, durable.
- Low water vapor permeability, good tensile, explosion-proof and leak-proof.
- Sunscreen, anti-freezing, anti-corrosion and anti-acid, easy to move, small wear.
- Integrated molding, tasteless and non-toxic, no leakage is not easy to aging, long service life.
- Images may differ from the actual product.



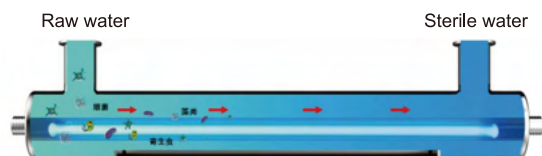
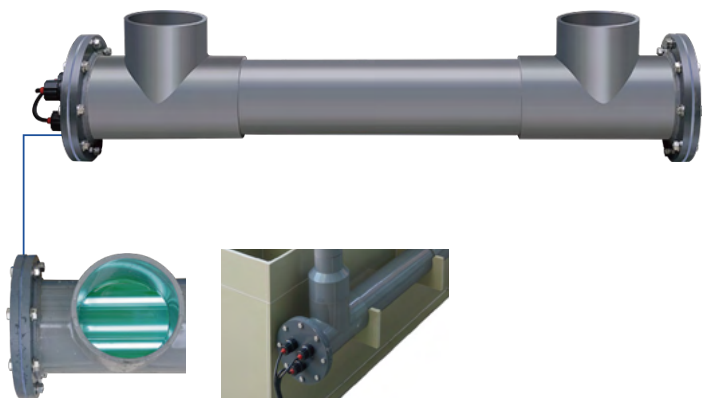
3-meter tank



5.5-meter tank

UV STERILIZER

Ultraviolet light has the ability to penetrate the cell membrane and destroy its internal structure, so that the bacteria lose the ability to divide and reproduce and gradually decline, and finally achieve the effect of eliminating the pathogenic bacteria in the cultured water.
 Long-term sterilization: The disinfection process is completely closed, no chemical reaction, no secondary pollution. Suitable for aquariums, aquaculture, swimming pools, hot springs and other water environment.



Scene application



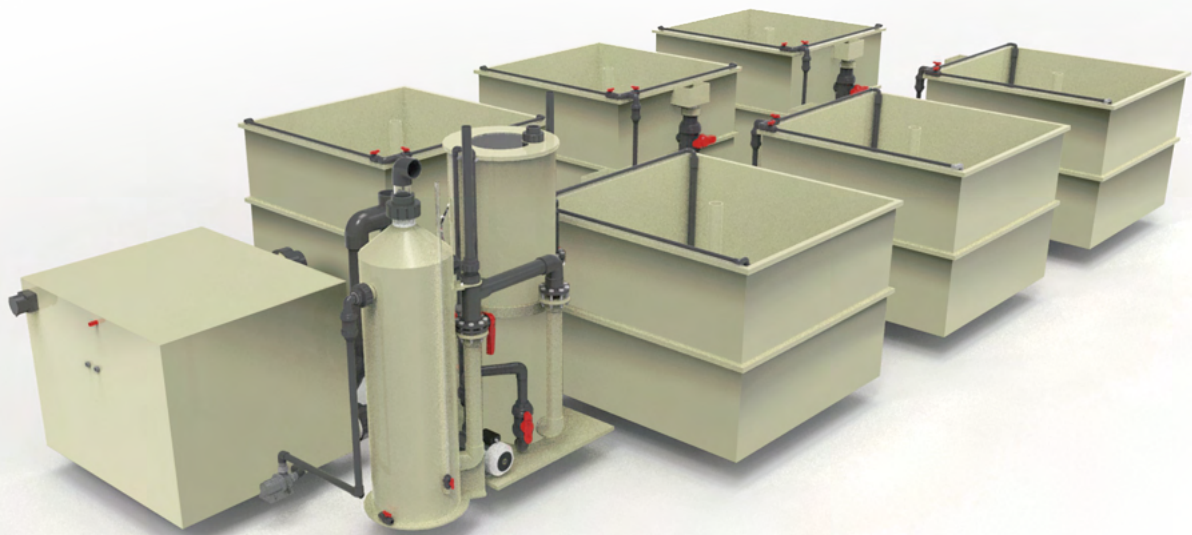
Product features

- Physical sterilization, efficient sterilization; Uv comprehensive sterilization without residue, purify water quality.
- Suitable for aquaculture pool, landscape pool water, domestic water, groundwater, pool disinfection, industrial sewage disinfection.
- Ultraviolet sterilization lamp, high transmittance, good sterilization effect.
- Long service life, energy saving.
- No secondary pollution, safe and reliable; Easy to install.
- Images may differ from the actual product.

Product	No of UV lamp	UV Power (w)	Body Diameter (mm)	Inlet/Outlet (mm)	Max Recommended Flow Rate (m ³)
UV-240	3	240	110	75	20
UV-400	5	400	140	90	35
UV-560	7	560	160	110	55
UV-720	9	720	225	160	125
UV-880	11	880	315	225	250

INTEGRATED RECIRCULATING AQUACULTURE SYSTEM

The integrated circulating aquaculture equipment is a combination of micro filter, precipitation, ultraviolet disinfection, biochemical filter filler, backwash pump, circulating water pump and electric control cabinet. It is designed and easy to install. You only need to plug in and run water. The integrated circulating water system filters the residual food and fish feces in the water and degrades ammonia and nitrite. Set, can quickly clean and blow down.



Recirculating aquaculture system, RAS

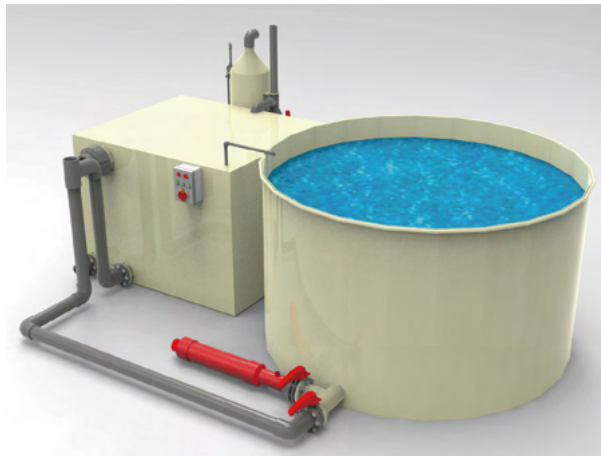
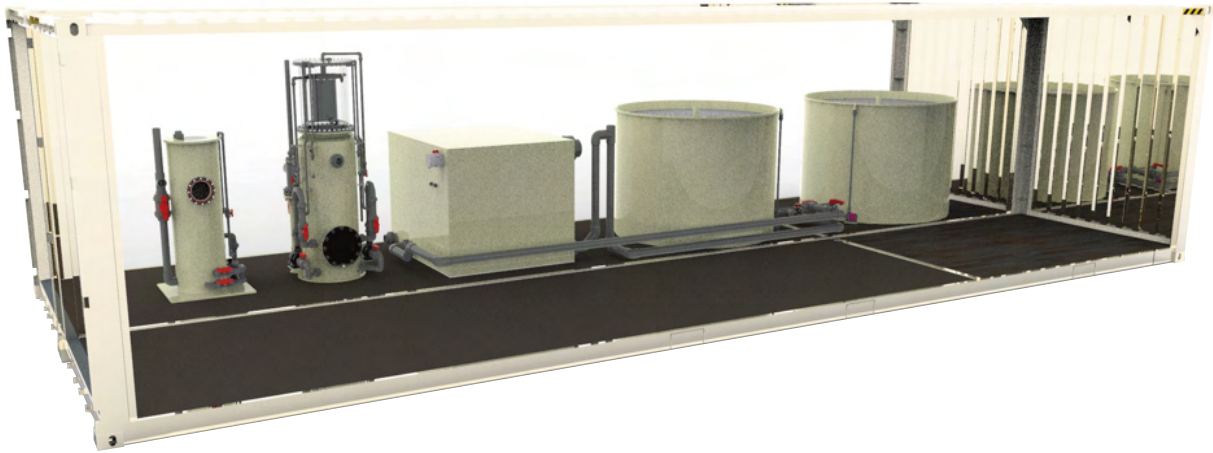
Industrial recirculating aquaculture systems are land-based fish farms. Through a series of water treatment units, the wastewater generated in the breeding ponds is treated and recycled. The main principle of RAS is to integrate advanced technologies in environmental engineering, civil construction, modern biology, electronic information and other disciplines to remove harmful pollutants such as residual baits, ammonia nitrogen (TAN), nitrite nitrogen (NO₂-N) in aquaculture water and purify the aquaculture environment. Physical filtration, biological filtration, CO₂ removal, disinfection, oxygenation, temperature control and other treatments to re-input the purified water into the aquaculture tank. It can not only solve the problem of low utilization rate of water resources, but also provide stable, reliable, comfortable and high-quality living environment for aquaculture organisms, providing favorable conditions for high-density aquaculture.

The system can be adapted to both fresh and sea water, independent of seasonal climate changes and environmental impacts; Achieve stable and high quality production throughout the year.



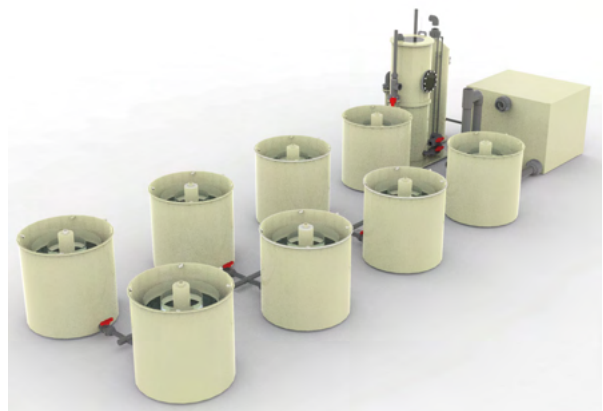
CUSTOMIZED CONTAINER SHRIMP SYSTEM

Customized container shrimp system – An overseas cold climate project customized for shrimp production in 2 x 40-foot container.



Customized Dual purpose 2.5-meter tank - Localized system in mountainous region within mainland China. This system is expandable up to 8 tanks for income generation.

Customized 1-meter fry tank – Another overseas system customized for African catfish fry. Simplified system to handle waste matter without over complicating equipment.



CUSTOMISED EQUIPMENT

Customised Equipment – We provide equipment customization to suit customer's needs. Specifications will be calculated and advise will be render to ensure customised equipment performance is optimised.



AQUARIUM SERIES EQUIPMENT

- **CR-90**

An all time favourite reactor for your tank's calcium and magnesium needs. This reactor should be coupled with pH controller to optimise it's performance.

- **XR-110**

A reactor built to eXterminate or reduce NO-3 and PO-4 from a system. It also stabilises pH when run in reverse timing with main tank lighting.

- **ZR-120**

This is a reactor designed for hobbyist who are keen in introducing zeolite system into their tank system. Easy to operate and hassle free upkeeping.



CR-120



XR-110



ZR-120



PRODUCT CATALOG

Aqua Dream Contact Information

Address: 3125 Mercer Ave # 104, Bellingham, WA 98225

Phone: (360) 223-4997 (360) 510-7754

(24/7 Technical Assistance)

Website: www.aquadreamusa.com

www.aquadreamwholesale.com