

# Galvanized Slant Wall Fans—Direct Drive Instruction Manual

## Model Numbers Covered:

115234



Please read and save these instructions. Read carefully before attempting to assemble, install, operate or maintain the equipment described within this manual. Carefully follow all safety information.

Save this manual for future reference.

Model # \_\_\_\_\_

Purchase Date: \_\_\_\_\_

Date: 09/01/16  
Form: HV0023 Version 2

# Getting Started



## Tools/Materials Needed:

- Drill/drill bits
- 5/16" nut driver
- Construction screws
- Caulk or sealant

## Contents:

- Galvanized slant wall fan(1)
- Instruction manual(1)

## Inspection:

After unpacking your exhaust fan, carefully inspect for any damage that may have occurred during transit. Inspect for loose, missing or damaged parts. If there is physical damage to any parts of the fan, a freight claim must be filed with the carrier. Check to assure that all bolts, screws and set screws are securely tightened and have not become loose during transit. Retighten as required. Rotate propeller by hand to assure it turns freely.



## General Safety Instructions

**Danger:** Before installing or servicing, always lock out and tag power source. Do not rely on a switch as the only means of disconnecting power. Failure to disconnect power can result in fire, electrical shock or serious injury. Motor will restart without warning after thermal protector trips. Do not touch an operating motor as it may be hot enough to cause injury. Do not place any body parts or objects in fan or drive components while fan is connected to a power source.



## Warning:

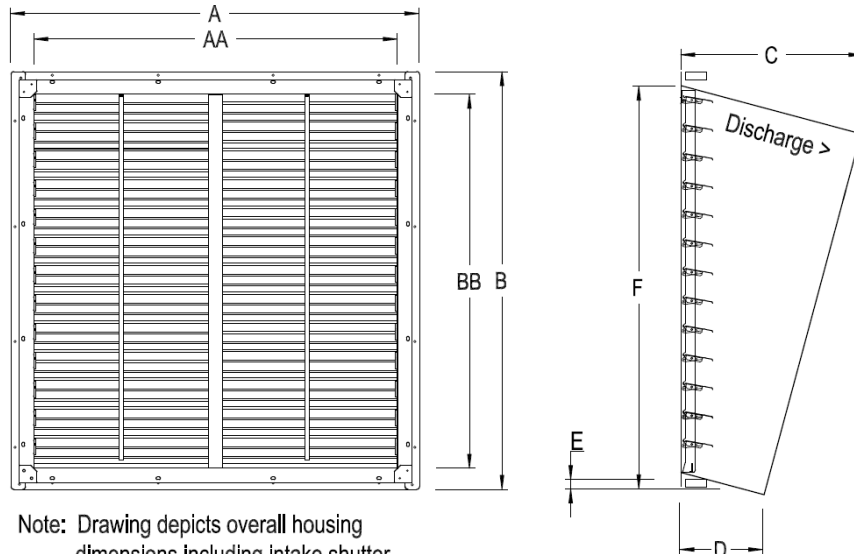
1. Read and follow all instructions, cautions, dangers and warnings. Failure to do so could result in personal injury, death or property damage.
2. Make sure the electrical power source conforms to the requirement of the fan(s) as well as local codes.
3. Electrical connections, installation and maintenance must be done by qualified electrical personnel in accordance with all applicable codes and ordinances.
4. Unit must be adequately grounded.
5. To reduce the risk of fire or electrical shock, do not expose this fan to water.
6. Do not touch electrically live components.
7. Free rotation of the propeller is critical. It must not touch any part of the venturi, framework or drive components.
8. Assure that all power cords do not come in contact with any sharp edges, hot surfaces or chemicals. Immediately replace any damaged cords.



**Caution:** OSHA requires OSHA compliant guards when fan is installed within 7ft of the floor or working level.

## Specifications

Model	Prop Dia.	Dimension (In.)								Rough-in Opening		Ship Wt	Shipping Dims.
		A	B	AA	BB	C	D	E	F	Height	Width		
115234	36"	44	45 1/4	39 1/2	40 1/8	27	16 3/4	4 1/2	45 3/4	42 7/8	40 7/8	177	48x32x51



## Performance

Model	HP	F.L.A.	Volt.	Ph	Hz	Motor RPM	CFM				CFM/Watt				Db 0.00" SP
							0.00" SP	0.05" SP	0.10" SP	0.15" SP	0.00" SP	0.05" SP	0.10" SP	0.15" SP	
115234	1/2	5.2/2.6	115/230	1	60	825	10,840	10,024	9,206	8,423	20.4	17.8	15.7	13.7	76

## Fan Installation

For framing dimensions, refer to rough-in opening height and width shown in the specifications above.

Position the fan for desired airflow. Air will discharge on the side of the fan facing the propeller.

Assure the fan is fastened securely in the opening to avoid excess "rattling" or vibration using proper fasteners. Fasteners not included.

Refer to motor nameplate for wiring diagram.



**Caution:** Before operating your new fan, check blade for proper torque, check all fasteners for tightness and assure screens and/or shutters are securely in place.

## Maintenance

Periodic maintenance schedules should be set to assure reliability and performance of the fan. This maintenance should include inspection of all fasteners, propeller torque and proper cleaning of the complete fan assembly.

Check for excessive vibration while fan is running.

Periodically inspect and tighten all set screws and hardware.

Assure all mounting hardware, chains, etc. are properly secured.

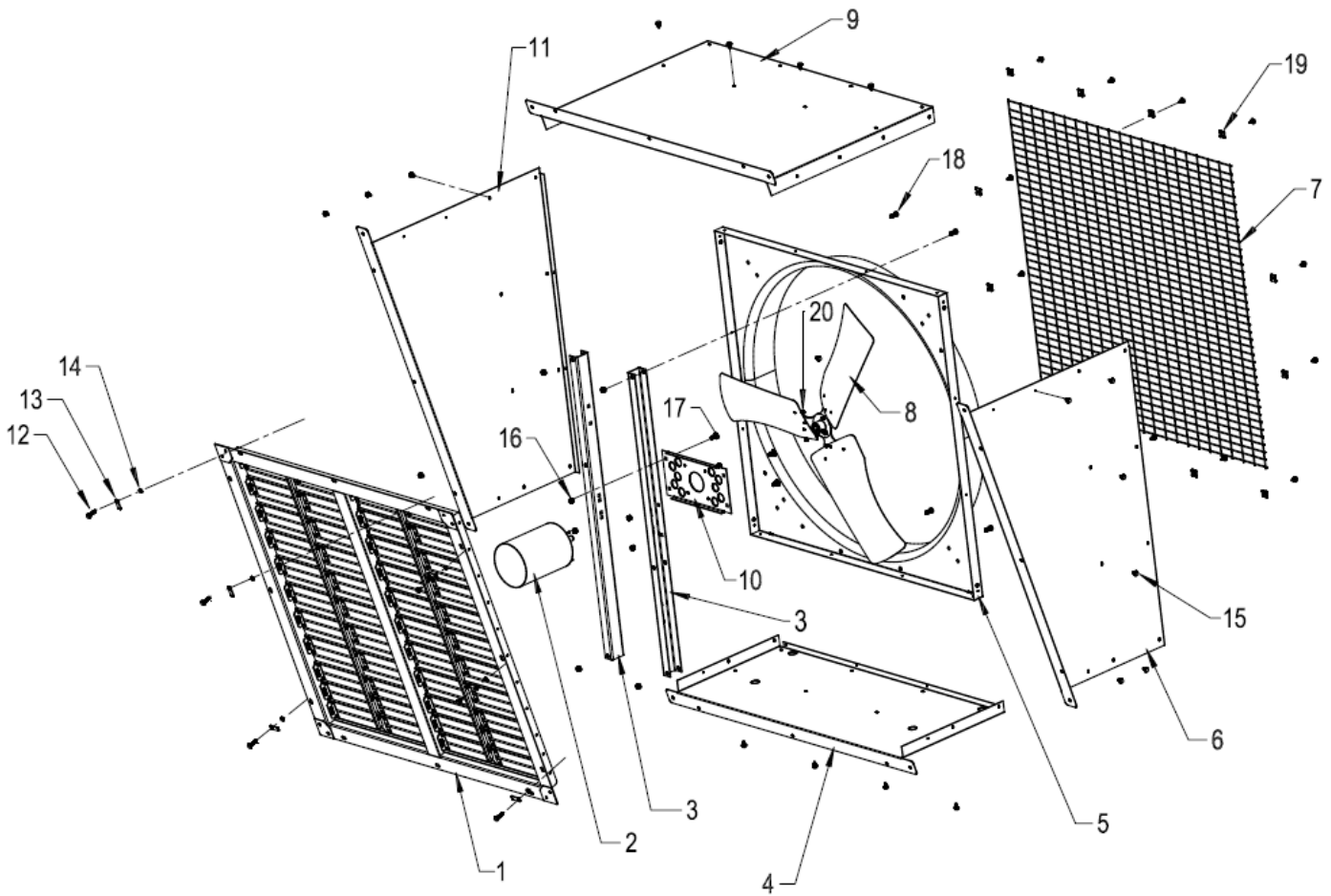
Motors feature permanently sealed ball bearings and require no further lubrication.

The fan propeller should be periodically cleaned to assure proper balance and performance.

## Troubleshooting Guide

Symptom	Possible Cause(s)	Corrective Action
Fan will not start	<ol style="list-style-type: none"> <li>1. Tripped circuit breaker</li> <li>2. Defective motor</li> <li>3. Incorrectly wired</li> <li>4. Electricity turned off</li> </ol>	<ol style="list-style-type: none"> <li>1. Reset circuit breaker</li> <li>2. Repair or replace</li> <li>3. Shut off power, check for proper connections</li> <li>4. Contact local power company</li> </ol>
Excessive noise or vibration	<ol style="list-style-type: none"> <li>1. Blade is hitting housing</li> <li>2. Blade is bent</li> <li>3. Fan not securely anchored</li> <li>4. Bad/noisy bearings</li> </ol>	<ol style="list-style-type: none"> <li>1. Free blade of obstruction</li> <li>2. Replace blade</li> <li>3. Secure properly</li> <li>4. Replace motor</li> </ol>
Insufficient airflow	<ol style="list-style-type: none"> <li>1. Incorrect voltage applied</li> <li>2. Defective motor</li> <li>3. Propeller is damaged</li> <li>4. Blocked Airflow</li> <li>5. Not enough intake air</li> <li>6. Fan is dirty</li> </ol>	<ol style="list-style-type: none"> <li>1. Wire properly</li> <li>2. Replace motor</li> <li>3. Replace propeller</li> <li>4. Remove obstructions</li> <li>5. Add additional air intake openings</li> <li>6. Clean fan guards/screens, motor and propeller</li> </ol>
Motor overheats or trips out	<ol style="list-style-type: none"> <li>1. Over/under line voltage</li> <li>2. Defective motor</li> <li>3. Fan is dirty.</li> <li>4. Not enough intake air</li> </ol>	<ol style="list-style-type: none"> <li>1. Contact local power company</li> <li>2. Replace motor</li> <li>3. Clean fan guards/screens, motor and propeller</li> <li>4. Add additional air intake openings</li> </ol>

## Repair Parts Illustration



Ref No	Description	115234	Qty
1	Intake shutter	SA36SW-N	1
2	Motor	B370-8E	1
3	Upright frame piece	N/A	2
4	Bottom housing panel	N/A	1
5	Venturi panel	N/A	1
6	Right housing panel	N/A	1
7	Discharge screen	36SCREEN-N	1
8	Propeller	9001481	1
9	Top housing panel	N/A	1
10	Motor mounting plate	N/A	1
11	Left housing panel	N/A	1
13	Latch for shutter	CLIP-SH	4
19	Clip for screen	CLIP-SC	12