

# MUB 062 630D4 Multibox

Centrifugal box fan, insulated, flexible outlet

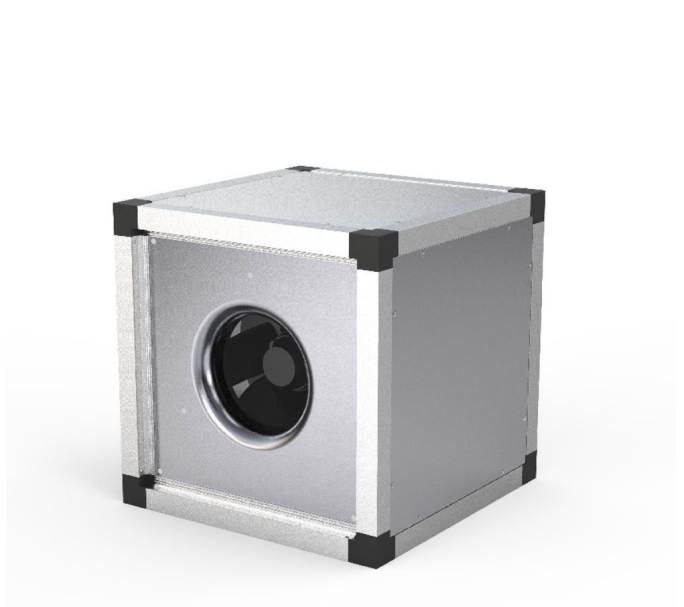
Item Number: 235398

Variant: 400V 3~ 50Hz - 90° air flow



- High efficient motor
- Speed-controllable via frequency converter
- Integral cold conductor (PTC)
- Low sound level
- Flexible airflow direction due to removable panels
- Installation in any mounting position
- Easy to maintain and reliable

The MUB fan are equipped with high efficient motors. The MUB fans have an impeller with backward curved blades, manufactured from aluminum. Speed control is only possible by using a frequency converter. Motor protection is done by cold conductors (PTC), which have to be connected to an external motor protection device. The casing consists of an aluminum frame with fiberglass reinforced plastic corners of PA6; highly shock-resistant. The double skin panels are manufactured from galvanized steel with 30 mm mineral wool insulation. To avoid condensation the profile is provided with a separate chamber to fix screws. The Multibox fans are delivered for straight through airflow but can easily be rebuilt due to removable panels. This allows flexible ventilation solutions. The MUB can also be used as extract- or supply air unit in air handling units. Installation in any mounting position is possible.



MUB with additional modules (filters, heaters etc.) are available as air handling units "K025, K042 or K062" on request!

## Technical parameters

Nominal data		
Voltage (nominal)	400	V
Frequency	50	Hz
Phase(s)	3~	
Input power	4,499	W
Input current	8	A
Impeller speed	1,464	r.p.m.
Air flow	max 4.249	m <sup>3</sup> /s
Temperature of transported air	max 40	°C
Max temperature of transported air, when speed controlled	40	°C

**Protection/Classification**

Enclosure class, motor	IP55
------------------------	------

Insulation class	F
------------------	---

**Data according to ErP**

ErP ready	ErP 2016; ErP 2018
-----------	--------------------

**Dimensions and weights**

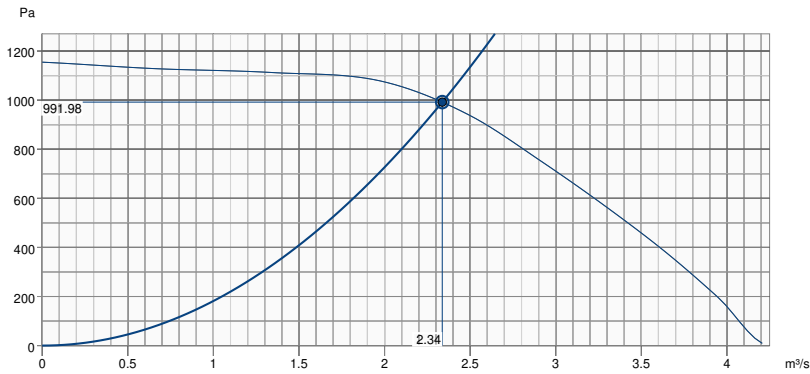
Weight	111.5 kg
--------	----------

**Others**

Motor type	AC
------------	----

# Performance

## Performance curve



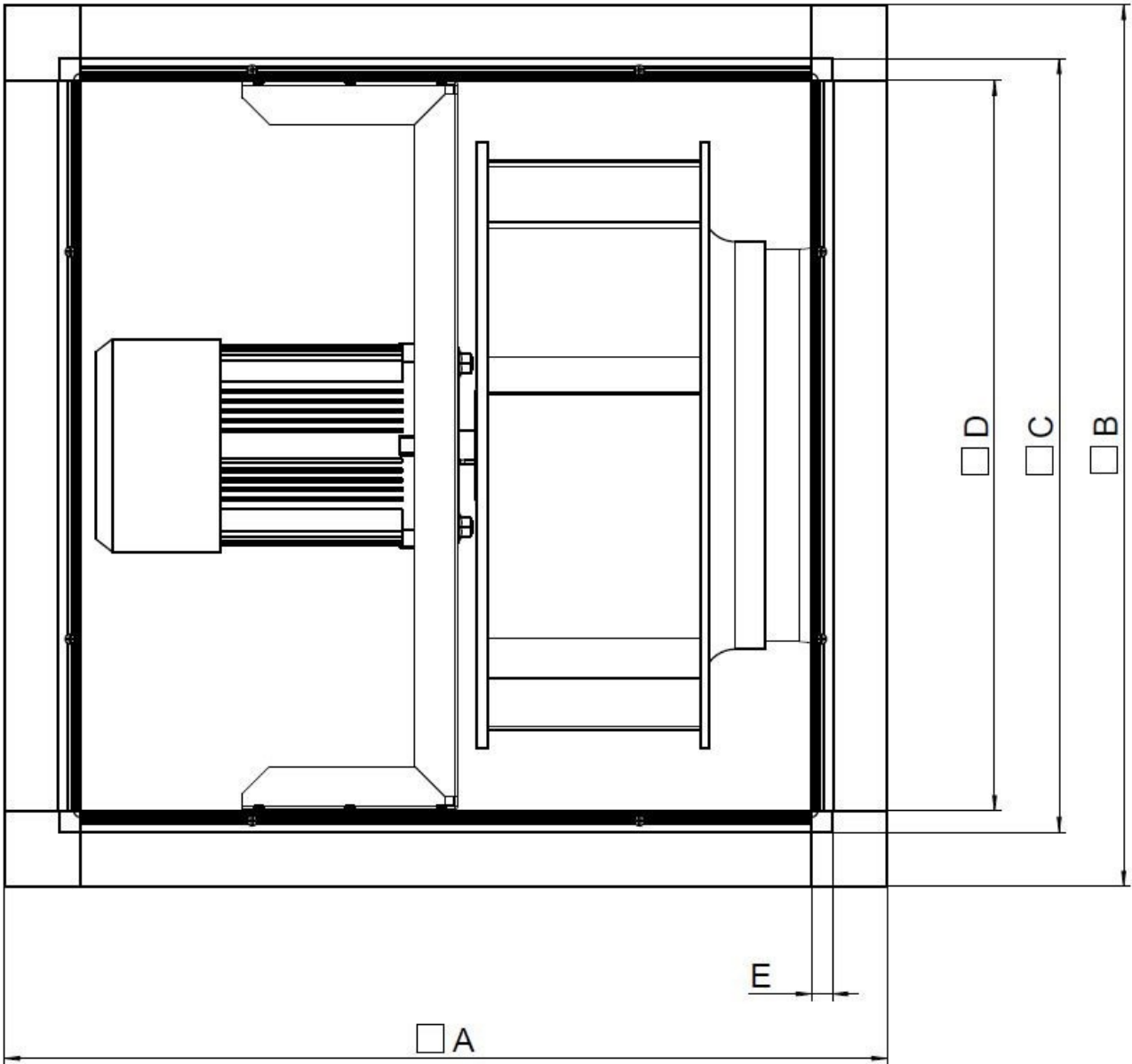
### Hydraulic data

Required air flow	2.34 m³/s
Required static pressure	992 Pa
Working air flow	2.34 m³/s
Working static pressure	992 Pa
Air density	1.204 kg/m³
Power	4349.5 W
Fan control - RPM	1465 rpm
Current	7.80 A
SFP	1.861 kW/m³/s
Control voltage	400.0 V
Supply voltage	400 V

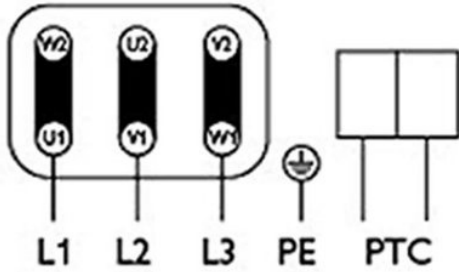
Sound power level		63	125	250	500	1k	2k	4k	8k	Total
Inlet	dB(A)	58	78	81	84	85	82	79	71	90
Outlet	dB(A)	59	79	82	85	87	83	80	72	91
Surrounding	dB(A)	38	62	53	52	55	54	46	36	64
Sound pressure level at 3m (20m² Sabine)	dB(A)	-	-	-	-	-	-	-	-	57
Sound pressure level at 3m free field	dB(A)	-	-	-	-	-	-	-	-	43

## Dimension

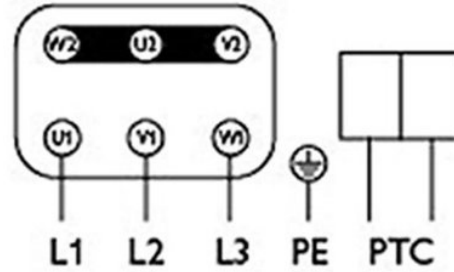
MUB 062	□A	□B	□C	□D	E
560/630	820	820	720	678	21



**Dreiphasenmotor mit Kaltleiter**  
Three phase motor with cold conductor  
Moteur triphasé avec résistance PTC



3 x 400V  
D Schaltung  
Delta connection  
Branchement en triangle



3 x 690V  
Y Schaltung  
Star connection  
Branchement en étoile

Drehrichtungsänderung durch Vertauschen von 2 Phasen  
Changing of direction of rotation by interchanging of two phases  
Changement de sens de rotation par inversion de deux phases

Typenschild beachten! See label! Voir plaquette!

## Acoustic

The Level of Casing-Breakout-Noise depends on the quality of shielding the acoustic inlet and outlet noises.

The shown Level of Casing-Breakout-Noise will be reached only in case of 100 % shielding the acoustic inlet and outlet noise and a correspondingly low environment noise.

## Ecodesign

Product	
Trade name	Systemair
Product name	MUB 062 630D4 IE3
Ecodesign	
ErP compliance	2018
Unit category	NRVU
Drive	External MSD or VSD
Unit type	UVU
Heat recovery type	None
Temperature ratio (UVU)	Not applicable
qv nom	2.34 m <sup>3</sup> /s
P nom	4.351 kW
Ps nom	992 Pa
Fan efficiency	53.3 %
External Leakage	5 %
Sound power level LWA	91 dB(A)