

# KV DUO 400 EC

Centrifugal circular duct fan

Item Number: 76834

Variant: 230V 1~ 50Hz

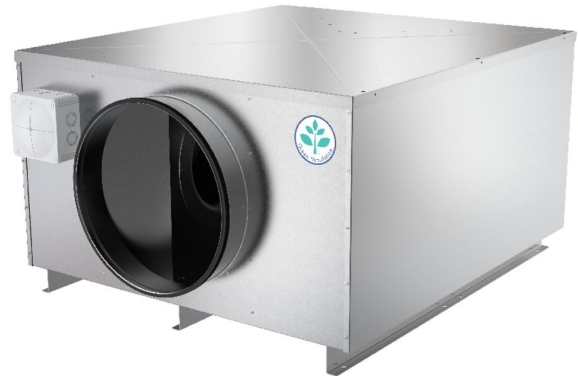


- Speed-controllable
- Integrated electronic motor protection
- Safe and maintenance free operation
- Energy-saving
- Suitable for External Mounting as standard
- Low noise level
- Twin fan – Run & Standby

The KV DUO fans are driven by EC-external rotor motors. These are energy saving motors with high efficiency. The power electronics are integrated in the motor housing. All models have one potential-free terminal for error message. All motors are suitable to be used for 50/60Hz. The input voltage for single phase units can vary between 200 and 277V, for three phase units between 380 and 480V. Speed control by a 0-10V signal.

The fans are easy to connect to spiral ducts using FK mounting clamps.

The KV DUO models are manufactured from Aluzinc sheet steel with acoustic insulation and are suitable for external mounting on roofs. All models are equipped with backward curved centrifugal impellers wired out to an IP65 Terminal box.



## Technical parameters

Norminal data	
Voltage (Nominal)	230 V
Frequency	50 Hz
Phase(s)	1~
Input power	750 W
Input current	3.28 A
Impeller speed	2,084 r.p.m.
Air flow	max 1.248 m <sup>3</sup> /s
Temperature of transported air	max 60 °C
Max temperature of transported air, when speed controlled	60 °C
Sound data	
Sound pressure level at 3m (20m <sup>2</sup> Sabin)	62 dB(A)
Protection/Classification	
Enclosure class, motor	IP54
Insulation class	F

**Data according to ErP**

ErP ready

ErP 2016; ErP 2018

**Dimensions and weights**

Duct dimension; Circular, inlet

400 mm

Duct dimension; Circular, outlet

400 mm

Weight

76.4 kg

**Others**

Duct connection type

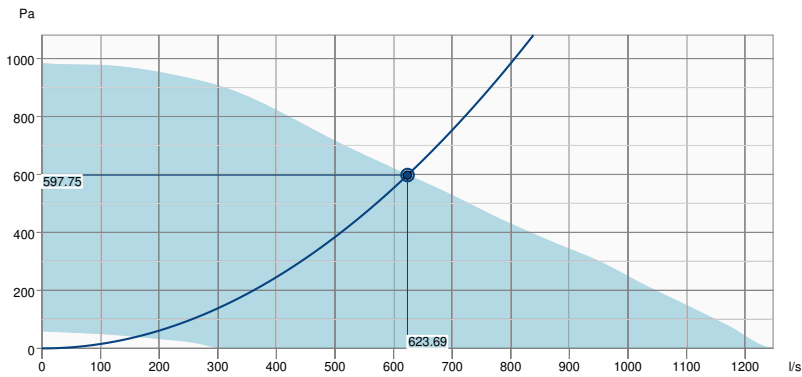
Circular

Motor type

EC

# Performance

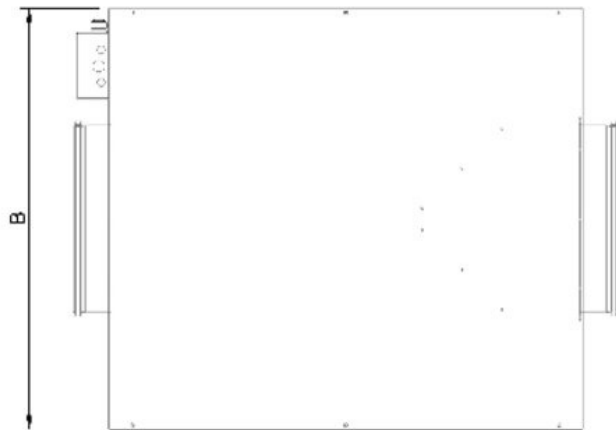
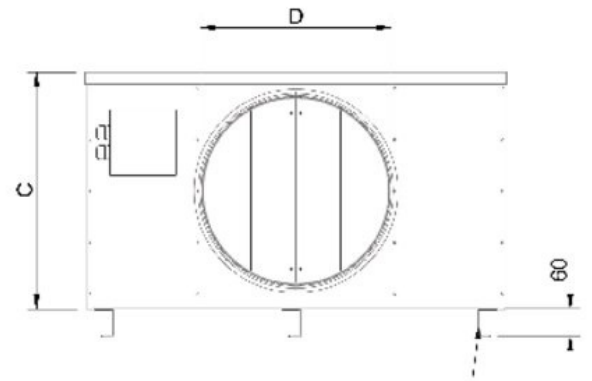
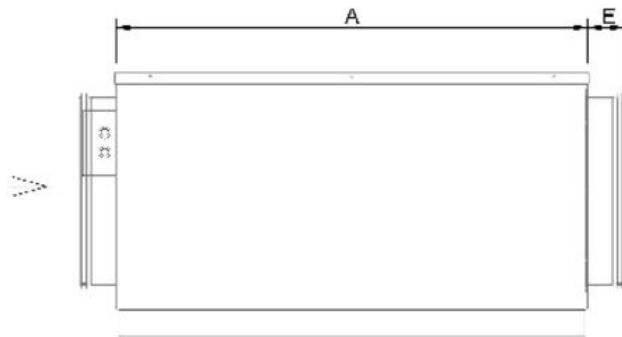
## Performance curve



Hydraulic data	
Required air flow	623.80 l/s
Required static pressure	598 Pa
Working air flow	623.69 l/s
Working static pressure	598 Pa
Air density	1.204 kg/m <sup>3</sup>
Power	716.6 W
Fan control - RPM	2105 rpm
Current	3.13 A
SFP	1.149 kW/m <sup>3</sup> /s
Control voltage	10.0 V
Supply voltage	230 V

Sound power level		63	125	250	500	1k	2k	4k	8k	Total
Inlet	dB(A)	54	66	80	71	65	68	68	63	81
Outlet	dB(A)	54	65	76	69	72	73	72	65	80
Surrounding	dB(A)	40	56	68	62	56	58	57	55	70
Sound pressure level at 3m (20m <sup>2</sup> Sabine)	dB(A)	-	-	-	-	-	-	-	-	63
Sound pressure level at 3m free field	dB(A)	-	-	-	-	-	-	-	-	49

## Dimension

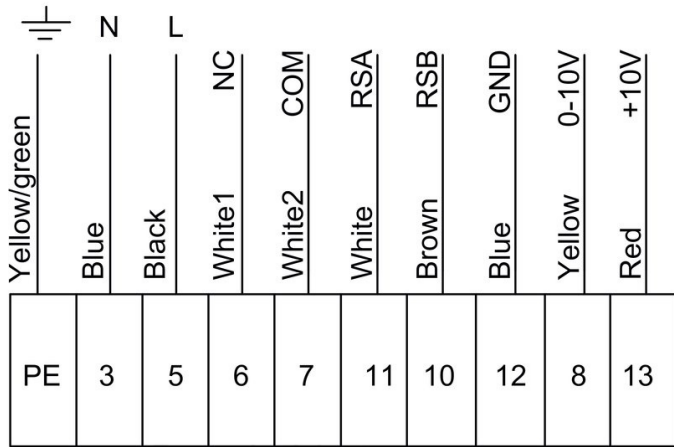


KV DUO	A	B	C	D	E
150	500	360	280	150	40
250	580	430	360	250	60
315	740	650	425	315	60
400	1000	895	505	400	65
500	1265	940	605	500	80
630	1383	1205	884	630	80

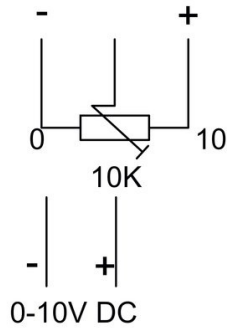
Mounting bracket is used on sizes 400 and 500

## Wiring

230V 1~



External potentiometer  
Optional



Terminal	Color
PE	Yellow/green
3	Blue
5	Black
6	White1
7	White2
11	White
10	Brown
12	Blue
8	Yellow
13	Red
External potentiometer optional	