

KVK Insulated duct fans

Insulated radial fan for limited spaces

- Design for limited installation height
- Very low noise, acoustic and thermal insulation
- Corrosion resistance of casing C4
- Indoor and outdoor installation
- Easy maintenance, service cover

[Find more details in our online catalogue.](#)



Flexibility

The KVK Silent fans **combine** a high efficient **fan** and **casing** with perfect **acoustic** and **thermal** insulation capacity. The KVK Silent fans are intended to use for **supply** or **extract** air, designed to be installed in **any position**. This ensures that the fans can be used in a variety of **commercial and domestic** applications.

Reliability

Construction of casing and thermal insulation permits **outdoor** and **indoor** use. The combination of reliable casing and motor construction ensures to minimize the need for maintenance of the fans and allows long **continuous operation**. Thanks to service lid it is **easy to clean**.

Performance

High performance impeller together with **high efficient** external rotor motor are designed to ensure high-level performance to **minimize power consumption** and **maximize efficiency**.

Noise

Partly or fully insulated casing (depends on model) is perfectly designed to **reduce noise** mainly to **surrounding** and partly to **inlet/outlet**.

Certifications



Ecodesign (ErP) compliant

Features

Construction

Casing of all KVK fans made of **AluZinc 185**, corrosion **class C4**.

KVK Slim has acoustically/thermally **insulated lid**. **KVK Silent** has acoustically/thermally **insulated lid and casing**. Insulation made of **rockwool** and has surface liner that prevents the migration of fibers into the airstream.

Casing has connection **spigot** with **rubber seals** and is equipped with an external **terminal box** with protection class **IP54**.

Impeller

KVK Slim/Silent fans use backward curved **radial** impeller. These are from lightweight, hard-wearing fiberglass reinforced **polyamide** (for sizes up to 250) or reinforced **polypropylene**, dynamically **balanced** and paired with corresponding external rotor motors.

Motor

Depending on type, fans are equipped with **AC** or high efficient **EC** external rotor motors. All motors are suitable for **50Hz** and **60Hz**.

Motor protection

Sizes **100-315 mm** with **AC** motors have **integrated** thermal protection with manual (electrical) reset.

Sizes **355-500 mm** with **AC** motors have prewired integral **thermal contacts TK** with leads to external **motor protection device**.

Fans with **EC** motors have an **integrated** electronic **thermal protection**, including **locked-rotor protection** and **soft-start**.

Control

EC motor with **built-in potentiometer** to adjust working point can be also controlled by external **signal 0-10V**.

AC motor can be controlled by **5-step** or **stepless** speed regulator.

KVK fans can be **demand controlled** via additional accessories like sensors and controllers for CO₂, temperature, humidity, presence indication and VAV.

Installation

KVK Slim/Silent fans can be installed in any position **indoor** and **outdoor**. Circular spigot with rubber seals is perfectly designed to connect to the duct by using **fast clamps preventing vibration** to the duct. A service cover with screw connection and hinges with pins make cleaning and service easy.

Technical parameters

Nominal data

Voltage (nominal)	230	V
Frequency	50	Hz
Phases	1~	
Input power	266	W
Input power kW	0.266	kW
Input current	1.27	A
Impeller speed	1,346	rpm
Air flow	max 0.702	m³/s
Capacitance of capacitor	5	µF
Temperature of transported air	max 70	°C
Max temperature of transported air, when speed controlled	70	°C

Sound data

Sound pressure level at 3m (20m² Sabin)	50	dB(A)
---	----	-------

Protection/Classification

Enclosure class, motor	IP54
Insulation class	F

Data according to ErP

ErP ready	ErP 2018
-----------	----------

Dimensions and weights

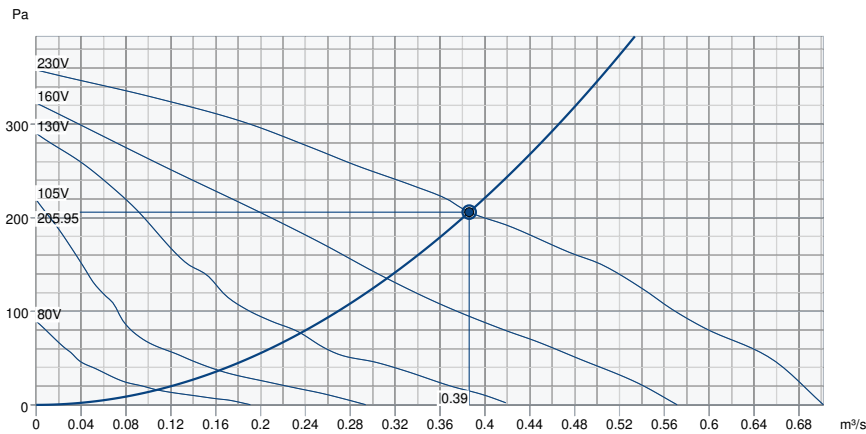
Duct dimension; Circular, inlet	315	mm
Duct dimension; Circular, outlet	315	mm
Weight	31.966	kg

Others

Duct connection type	Circular
Motor type	AC

Performance

Performance curve



Hydraulic data

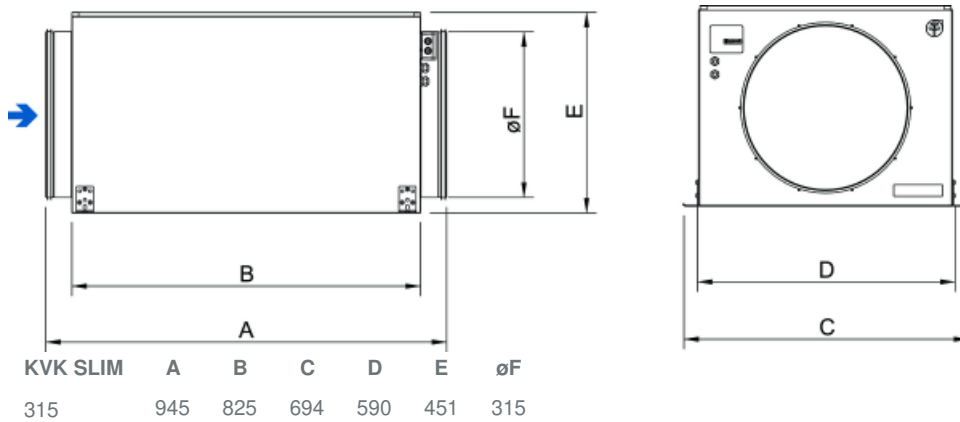
Required air flow	0.39 m³/s
Required static pressure	206 Pa
Working air flow	0.39 m³/s
Working static pressure	206 Pa
Air density	1.204 kg/m³
Power	238.7 W
Fan control - RPM	1,370 rpm
Current	1.20 A
SFP	0.618 kW/m³/s
Control voltage	230.0 V
Supply voltage	230 V

Sound power level		63	125	250	500	1k	2k	4k	8k	Total
Inlet	dB(A)	56	66	65	58	56	56	55	44	70
Outlet	dB(A)	56	68	64	59	58	56	50	41	71
Surrounding	dB(A)	35	50	55	48	45	45	47	34	58
Sound pressure level at 3m (20m² Sabine)	dB(A)	-	-	-	-	-	-	-	-	51
Sound pressure level at 3m free field	dB(A)	-	-	-	-	-	-	-	-	37

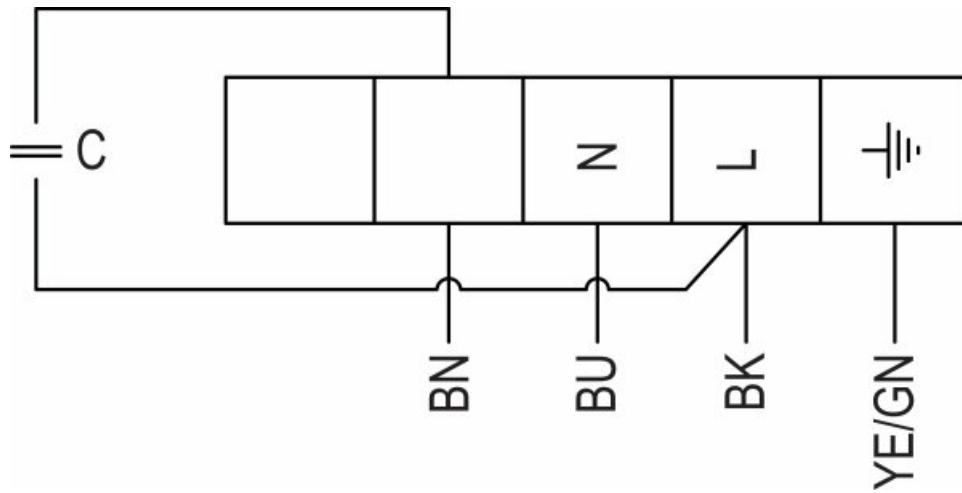
Ecodesign

Product	
Trade name	Systemair
Product name	KVK Slim 315
Ecodesign	
ErP compliance	2018
Unit category	NRVU
Drive	External MSD or VSD
Unit type	UVU
Heat recovery type	None
Temperature ratio (UVU)	Not applicable
qv nom	0.386 m ³ /s
P nom	0.239 kW
Ps nom	206 Pa
Fan efficiency	33.3 %
External Leakage	1 %
Sound power (LWA)	51 dB(A)

Dimension



Wiring



YE Yellow

BU Blue

GN Green

BN Brown

BK Black

Accessories

- RE 1,5 Speed control (5000)
- REPT 6 Digital regulator (5698)
- REU 1.5 Speed control (5004)
- RSK-500 Back draft damper (73049)
- SG 500 Protection guard (5615)
- CB 315-6,0 400V/2 Duct heater (5374)
- HR1 Room Humidistat (215150)
- RT 0-30 Room Thermostat (5151)
- CB 315-3,0 230V/1 Duct heater (5386)
- CBM 315-9,0 400V/3 Duct heater (5485)
- CWK 315-3-2,5 Duct cooler,circ (30025)
- FGR 315 Filter cassette (1818)
- FK 500 Fast clamp (1617)
- RSK-315 Back draft damper (5604)
- VBC 315-3 Water heating batt (9844)
- VBF 315 Water heating battery (1734)
- VK-50 Louvre shutter (5646)
- REE 2 Speed control (5316)
- RETP 6 Temp/Pressure regulator (32293)
- REV-3POL/03-7,5kW R/Y (33978)
- SG 315 Protection guard (5611)
- VKK-315 Back draft damper (1628)
- DTV500A (96807)
- Presence detector/IR24-P (6995)
- CB 315-12,0 400V/3 Duct heater (5387)
- CB 315-9,0 400V/3 Duct heater (5375)
- CBMF 315-9,0 400V/3 Duct heater (12354)
- FFR 315 Filter cassette (1779)
- FK 315 Fast clamp (1613)
- LDC 315-900 Silencer (5197)
- VBC 315-2 Water heating batt (5461)
- VBC 500-2 Water heating batt (9837)
- VK-30 Louvre shutter (5641)

Documents

- [INSTALLATION_OPERATION_AND_MAINTENANCE_INSTRUCTION_KV_DUO_KVK_DUO_KVK_003_EN.PDF](#)
- [COMMISSIONING_RECORD_FANS_EN.PDF](#)