

# KVK DUO 200 Circular duct fan

Systemair Acoustic twin fan KVKDUO200

Item Number: 27792

Variant: 230V 1~ 50Hz



- Speed-controllable
- Integral thermal contacts
- Low noise level
- Twin fan

KVK DUO models have double inlet centrifugal fans with forward-curved impellers and maintenance-free external rotor motors. To protect the motors from overheating the fans have integral thermal contacts with leads for connection to a motor protection device.

The fans are easy to connect to spiral ducts using FK mounting clamps.

The KVK DUO models are manufactured from galvanised sheet steel and are thermally and acoustically insulated with a 50 mm layer of mineral wool. Internal surfaces are protected with perforated galvanised sheet steel.



## Technical parameters

Norminal data		
Voltage (Nominal)	230	V
Frequency	50	Hz
Phase(s)	1~	
Input power	191	W
Input current	0.837	A
Impeller speed	2,422	r.p.m.
Air flow	max 0.238	m <sup>3</sup> /s
Min. Static back pressure	0	Pa
Capacitance of capacitor	4	µF
Temperature of transported air	max 70	°C
Max temperature of transported air, when speed controlled	70	°C
Sound data		
Sound pressure level at 3m (20m <sup>2</sup> Sabin)	39	dB(A)

**Protection/Classification**

Enclosure class	IP54
Enclosure class, motor	IP44
Insulation class	F

**Data according to ErP**

Energy class, Basic unit	E
Energy class, Local demand	C
ErP ready	ErP 2016; ErP 2018

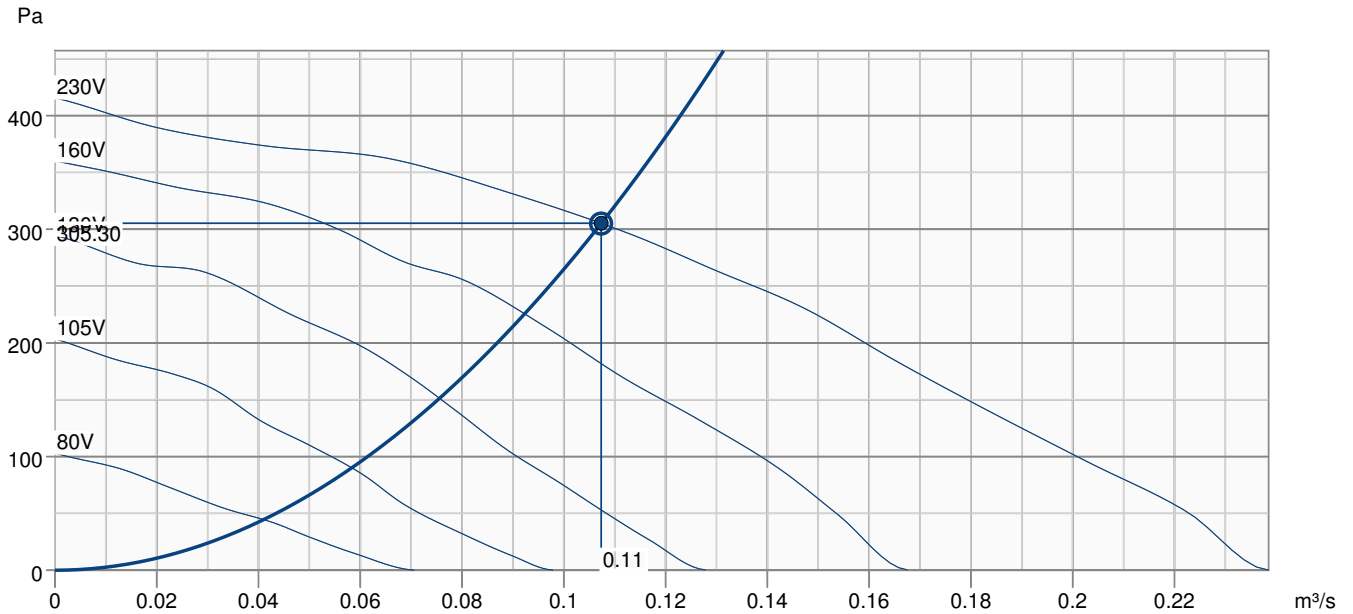
**Dimensions and weights**

Duct dimension; Circular, inlet	200	mm
Duct dimension; Circular, outlet	200	mm
Weight	29.2	kg

**Others**

Duct connection type	Circular
Motor type	AC

## Performance curve

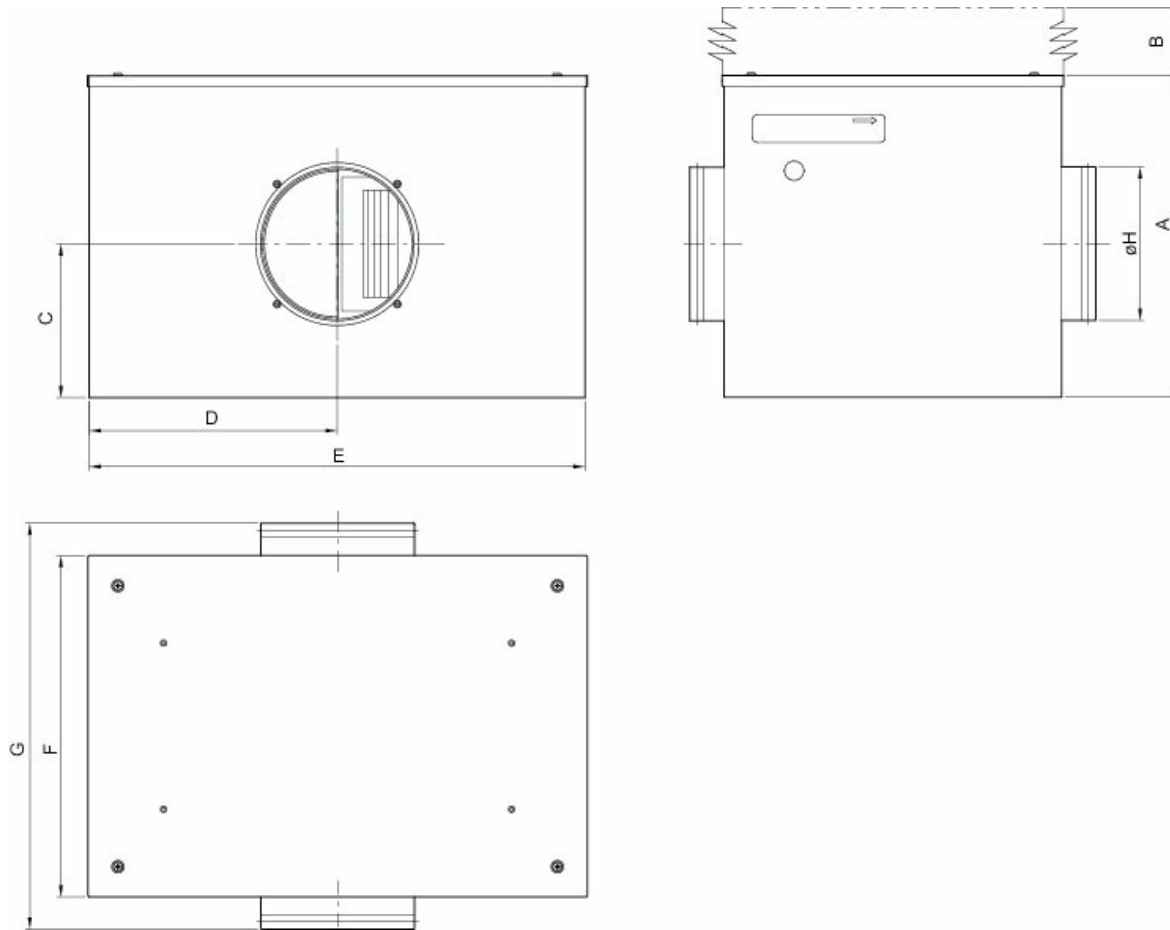


### Hydraulic data

Required air flow	0.11 m³/s
Required static pressure	305 Pa
Working air flow	0.11 m³/s
Working static pressure	305 Pa
Air density	1.204 kg/m³
Power	142.8 W
Fan control - RPM	2663 rpm
Current	0.63 A
SFP	1.331 kW/m³/s
Control voltage	230.0 V
Supply voltage	230 V

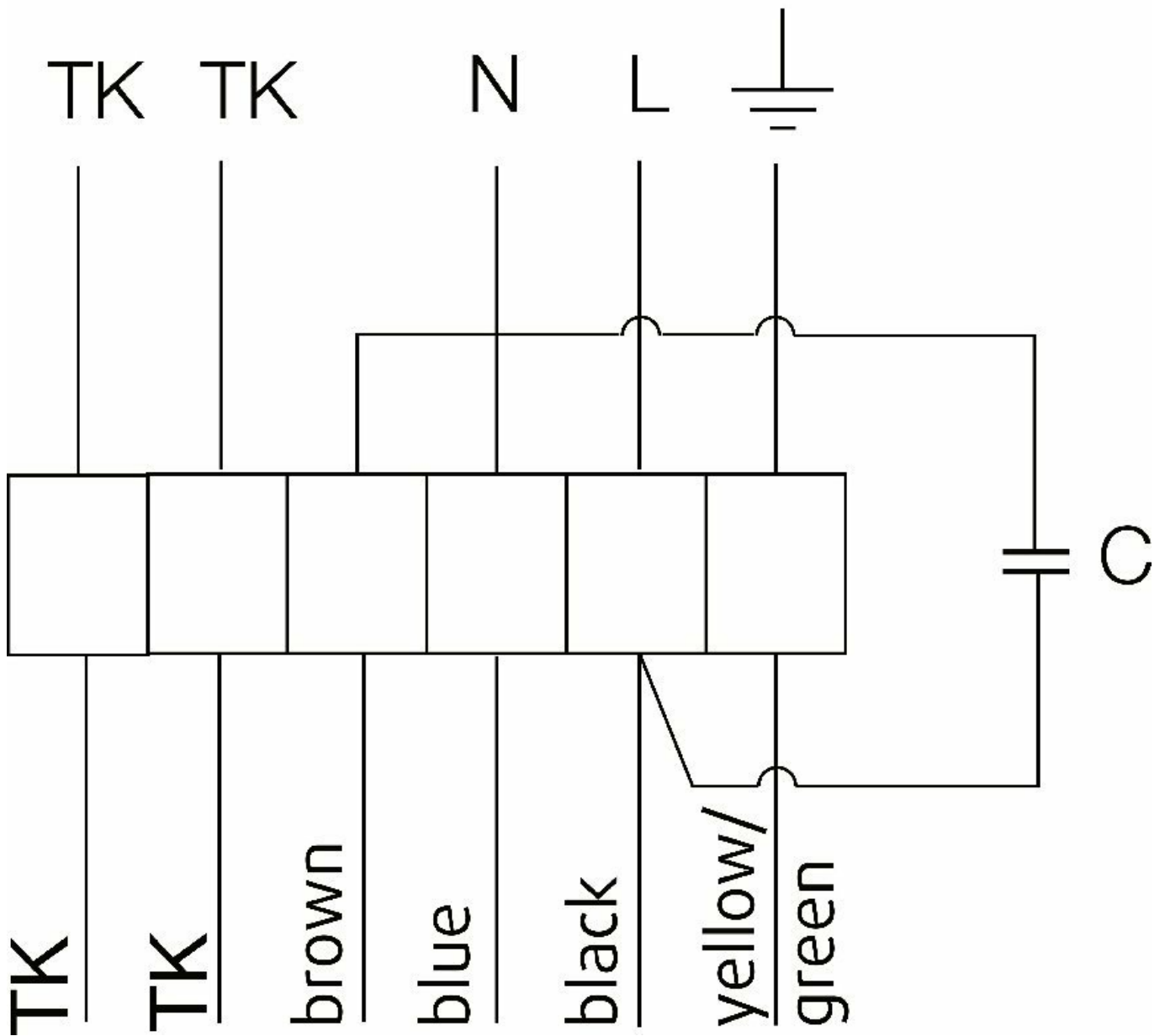
Sound power level		63	125	250	500	1k	2k	4k	8k	Total
Inlet	dB(A)	57	57	58	54	46	48	42	38	63
Outlet	dB(A)	58	65	64	68	68	67	64	57	74
Surrounding	dB(A)	38	36	41	42	36	39	32	25	47
Sound pressure level at 3m (20m² Sabine)	dB(A)	-	-	-	-	-	-	-	-	40
Sound pressure level at 3m free field	dB(A)	-	-	-	-	-	-	-	-	26

## Dimension



KVK DUO	A	B	C	D	E	F	G	øH
125	333	275	165	255	510	350	425	125
160	333	275	165	255	510	350	425	160
200	386	325	190	300	600	400	475	200
250	460	400	207	360	720	500	615	250

230V 1~



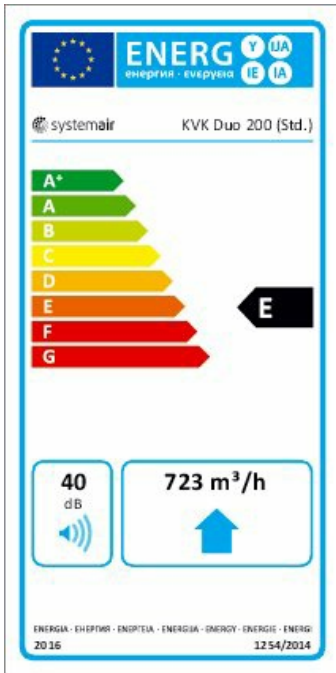
## Ecodesign

Product		
Trade name	Systemair	
Product name	KVK DUO 200 Circular duct fan	
Basic unit		
ErP compliance	2016	
SEC Average	-10.2	kWh/(m <sup>2</sup> .a)
SEC Cold	-26.6	kWh/(m <sup>2</sup> .a)
SEC Warm	-0.8	kWh/(m <sup>2</sup> .a)
SEC Class	E	
Unit category	RVU	
Unit type	UVU	
Drive	External MSD or VSD	
Heat recovery type	None	
Temperature ratio (UVU)	Not applicable	
qv max	724	m <sup>3</sup> /h
P max	180	W
Sound power level LWA	40	dB(A)
qv ref	0.141	m <sup>3</sup> /s
Ps ref	50	Pa
SPI	0.222	W/(m <sup>3</sup> /h)
CTRL	1	
MISC	1.1	
x-value	1.5	
External Leakage	5	%
AEC average	278.2	kWh
AHS Cold	278.2	kWh
AEC warm	278.2	kWh
AHS Average	1,715.2	kWh/a
AHS Cold	3,355.3	kWh/a
AHS Warm	775.6	kWh/a

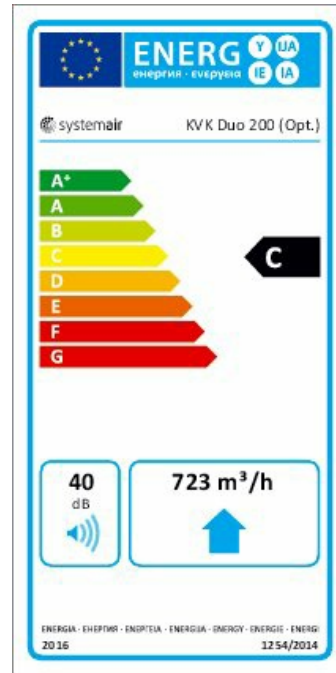
Units with local demand control		
ErP compliance		2018
SEC Average	-24.7	kWh/(m <sup>2</sup> .a)
SEC Cold	-51.7	kWh/(m <sup>2</sup> .a)
SEC Warm	-9.2	kWh/(m <sup>2</sup> .a)
SEC Class		C
Unit category		RVU
Unit type		UVU
Drive		External MSD or VSD
Heat recovery type		None
Temperature ratio (UVU)		Not applicable
qv max	723	m <sup>3</sup> /h
P max	180	W
Sound power level LWA	40	dB(A)
qv ref	0.1406	m <sup>3</sup> /s
Ps ref	50	Pa
SPI	0.222	W/(m <sup>3</sup> /h)
CTRL	0.65	
MISC	1.1	
x-value	1.5	
External Leakage	5	%
AEC average	145.8	kWh
AEC cold	145.8	kWh
AEC warm	145.8	kWh
AHS Average	2,830	kWh/a
AHS Cold	5,536.2	kWh/a
AHS Warm	1,279.7	kWh/a

# Energy class label

## Energy class, Basic unit



## Energy class, Local demand





## Accessories

- FFR 200 Filter cassette (1773)
- FK 200 Fast clamp (1611)
- REE 1 Speed control (5314)
- RSK-200 Back draft damper (5602)
- SG 200 Protection guard (5609)
- CB 200-2,1 230V/1 Duct heater (5384)
- CB 200-3,0 400V/2 Duct heater (5294)
- CBM 200-5,0 400V/2 Duct heater (5483)
- LDC 200-300 Silencer (53369)
- LDC 200-900 Silencer (5195)
- VBF 200 Water heating battery (1732)
- ACO8A Auto Changeover panel (84291)
- STL 1.5 Speed controller (84251)
- FGR 200 Filter cassette (1812)
- IGK-200 Wall Grid (1633)
- REU 1.5 Speed control (5004)
- RTRE 1,5 Speed control (5008)
- VKK-200 Back draft damper (1626)
- CB 200-3,0 230V/1 Duct heater (5370)
- CB 200-5,0 400V/2 Duct heater (5371)
- CWK 200-3-2,5 Duct cooler,circ (30023)
- LDC 200-600 Silencer (5194)
- VBC 200-2 Water heating batt (5459)
- VK-20 Louvre shutter (5639)
- S-ET 10 Motor Protection (5154)

## Documents

- Fans\_Operating and Maintenance\_instr\_202341\_CE\_multilingual.pdf