

KVK DUO 160 Circular duct fan

Centrifugal circular duct fan <125W

Item Number: 5127

Variant: 230V 1~ 50Hz



- Speed-controllable
- Integral thermal contacts
- Low noise level
- Twin fan

KVK DUO models have double inlet centrifugal fans with forward-curved impellers and maintenance-free external rotor motors. To protect the motors from overheating the fans have integral thermal contacts with leads for connection to a motor protection device.

The fans are easy to connect to spiral ducts using FK mounting clamps.

The KVK DUO models are manufactured from galvanised sheet steel and are thermally and acoustically insulated with a 50 mm layer of mineral wool. Internal surfaces are protected with perforated galvanised sheet steel.

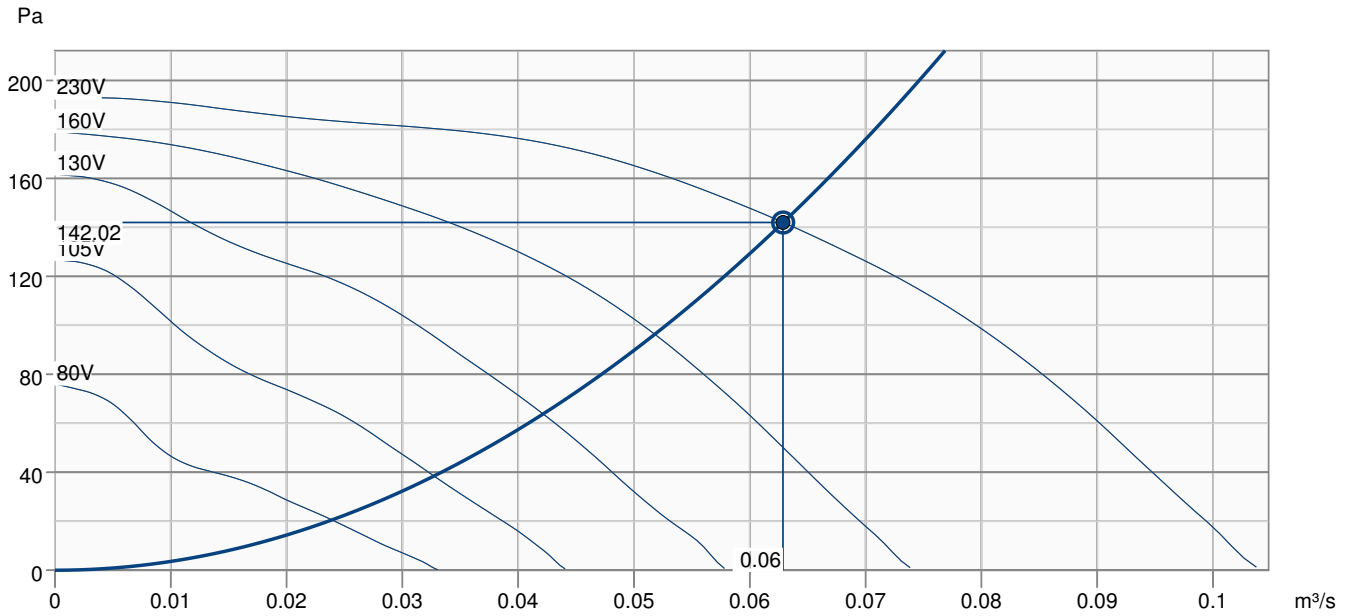


Technical parameters

Norminal data		
Voltage (Nominal)	230	V
Frequency	50	Hz
Phase(s)	1~	
Input power	69	W
Input current	0.301	A
Impeller speed	1,943	r.p.m.
Air flow	max 0.105	m ³ /s
Capacitance of capacitor	2	µF
Temperature of transported air	max 55	°C
Max temperature of transported air, when speed controlled	55	°C
Sound data		
Sound pressure level at 3m (20m ² Sabin)	37	dB(A)

Protection/Classification	
Enclosure class	IP54
Enclosure class, motor	IP44
Insulation class	F
Data according to ErP	
Energy class, Basic unit	E
Energy class, Local demand	C
ErP ready	ErP 2016; ErP 2018
Dimensions and weights	
Duct dimension; Circular, inlet	160 mm
Duct dimension; Circular, outlet	160 mm
Weight	19 kg
Others	
Duct connection type	Circular
Motor type	AC

Performance curve

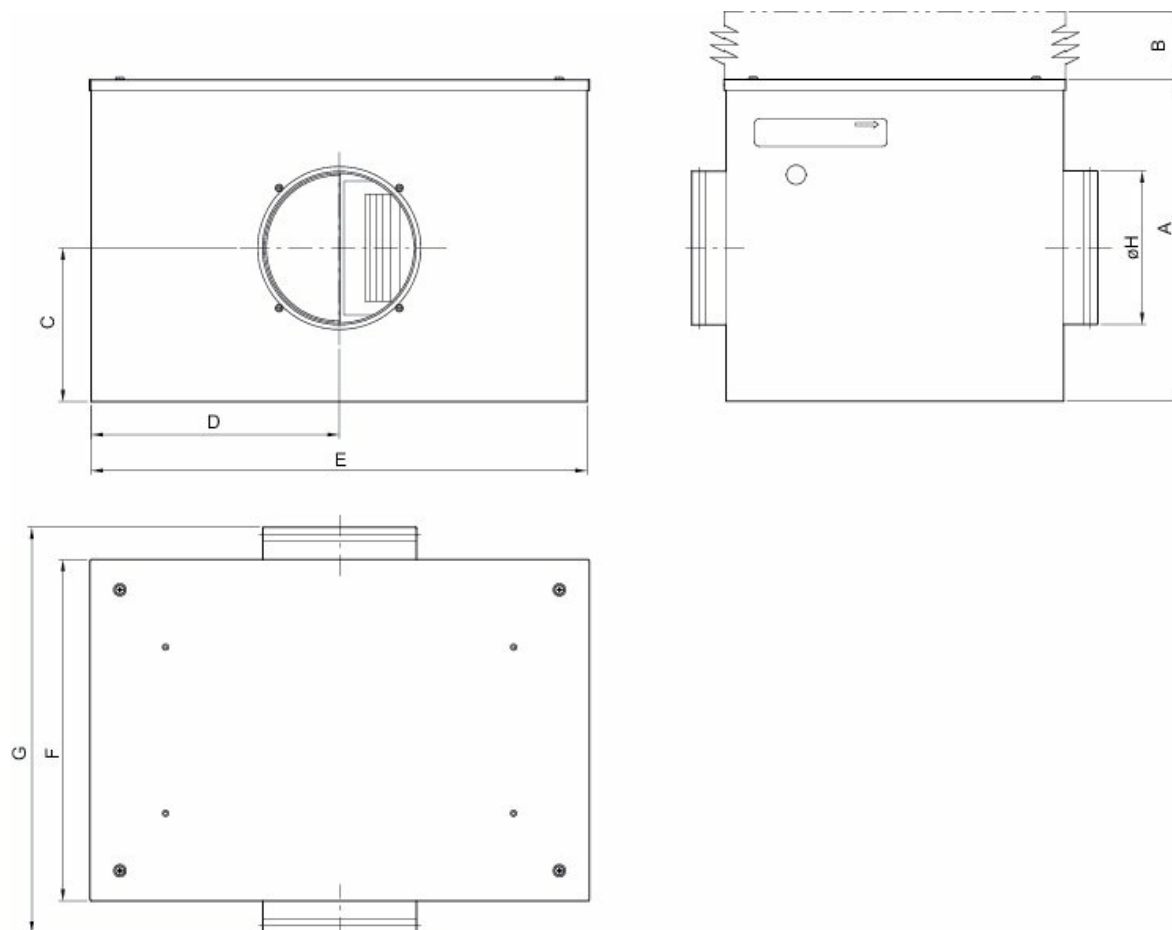


Hydraulic data

Required air flow	0.06 m³/s
Required static pressure	142 Pa
Working air flow	0.06 m³/s
Working static pressure	142 Pa
Air density	1.204 kg/m³
Power	62.2 W
Fan control - RPM	2371 rpm
Current	0.27 A
SFP	0.989 kW/m³/s
Control voltage	230.0 V
Supply voltage	230 V

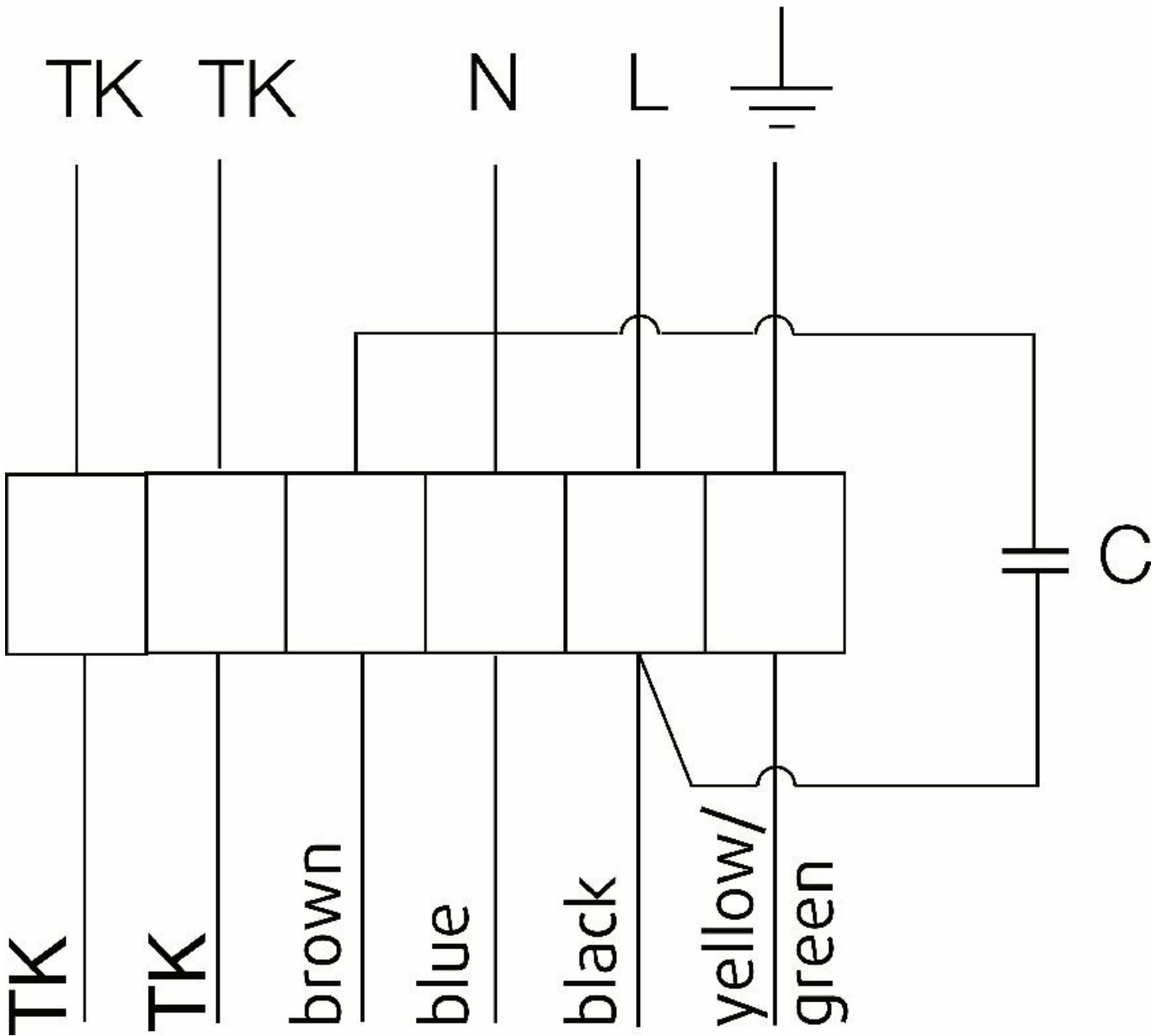
Sound power level		63	125	250	500	1k	2k	4k	8k	Total
Inlet	dB(A)	42	54	54	52	46	39	33	26	59
Outlet	dB(A)	50	56	62	64	61	59	54	48	68
Surrounding	dB(A)	<10	31	40	40	30	22	20	12	44
Sound pressure level at 3m (20m² Sabine)	dB(A)	-	-	-	-	-	-	-	-	37
Sound pressure level at 3m free field	dB(A)	-	-	-	-	-	-	-	-	23

Dimension



KVK DUO	A	B	C	D	E	F	G	øH
125	333	275	165	255	510	350	425	125
160	333	275	165	255	510	350	425	160
200	386	325	190	300	600	400	475	200
250	460	400	207	360	720	500	615	250

230V 1~



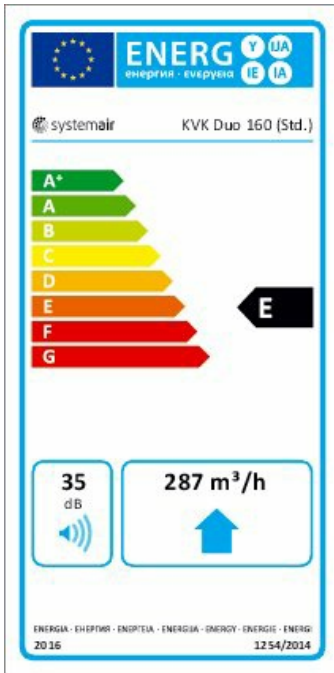
Ecodesign

Product		
Trade name	Systemair	
Product name	KVK DUO 160 Circular duct fan	
Basic unit		
ErP compliance	2016	
SEC Average	-12.4	kWh/(m ² .a)
SEC Cold	-28.8	kWh/(m ² .a)
SEC Warm	-3	kWh/(m ² .a)
SEC Class	E	
Unit category	RVU	
Unit type	UVU	
Drive	External MSD or VSD	
Heat recovery type	None	
Temperature ratio (UVU)	Not applicable	
qv max	288	m ³ /h
P max	64	W
Sound power level LWA	35	dB(A)
qv ref	0.056	m ³ /s
Ps ref	50	Pa
SPI	0.151	W/(m ³ /h)
CTRL	1	
MISC	1.1	
x-value	1.5	
External Leakage	5	%
AEC average	188.6	kWh
AHS Cold	188.6	kWh
AEC warm	188.6	kWh
AHS Average	1,715.2	kWh/a
AHS Cold	3,355.3	kWh/a
AHS Warm	775.6	kWh/a

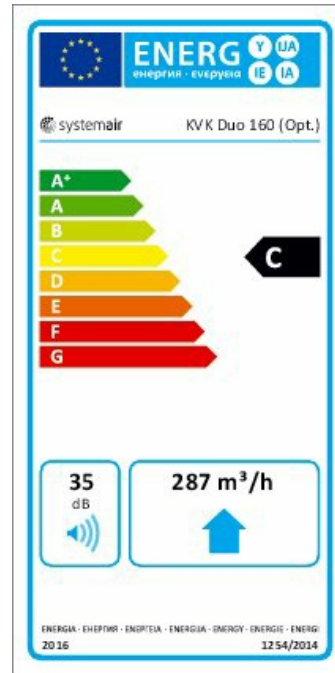
Units with local demand control		
ErP compliance		2018
SEC Average	-25.8	kWh/(m ² .a)
SEC Cold	-52.9	kWh/(m ² .a)
SEC Warm	-10.3	kWh/(m ² .a)
SEC Class		C
Unit category		RVU
Unit type		UVU
Drive		External MSD or VSD
Heat recovery type		None
Temperature ratio (UVU)		Not applicable
qv max	287	m ³ /h
P max	64	W
Sound power level LWA	35	dB(A)
qv ref	0.0557	m ³ /s
Ps ref	50	Pa
SPI	0.151	W/(m ³ /h)
CTRL		0.65
MISC		1.1
x-value		1.5
External Leakage		5 %
AEC average	98.8	kWh
AEC cold	98.8	kWh
AEC warm	98.8	kWh
AHS Average	2,830	kWh/a
AHS Cold	5,536.2	kWh/a
AHS Warm	1,279.7	kWh/a

Energy class label

Energy class, Basic unit



Energy class, Local demand



Accessories

- AWE-SK Motorprotection 2A/230V (5138)
- FGR 160 Filter cassette (1809)
- IGK-160 Wall Grid (1632)
- REU 1.5 Speed control (5004)
- RTRE 1,5 Speed control (5008)
- VKK-160 Back draft damper (1625)
- CB 160-2,1 230V/1 Duct heater (5292)
- CB 160-5,0 400V/2 Duct heater (5383)
- CWK 160-3-2,5 Duct cooler,circ (30022)
- LDC 160-600 Silencer (5192)
- VBC 160-2 Water heating batt (5458)
- ACO8A Auto Changeover panel (84291)
- FFR 160 Filter cassette (1770)
- FK 160 Fast clamp (1610)
- REE 1 Speed control (5314)
- RSK-160 Back draft damper (5601)
- SG 160 Protection guard (5608)
- CB 160-1,2 230V/1 Duct heater (5291)
- CB 160-2,7 230V/1 Duct heater (5382)
- CBM 160-2,1 230V/1 Duct heater (5482)
- LDC 160-300 Silencer (53108)
- LDC 160-900 Silencer (5193)
- VBF 160 Water heating battery (1731)
- STL 1.5 Speed controller (84251)

Documents

- Fans_Operating and Maintenance_instr_202341_CE_multilingual.pdf