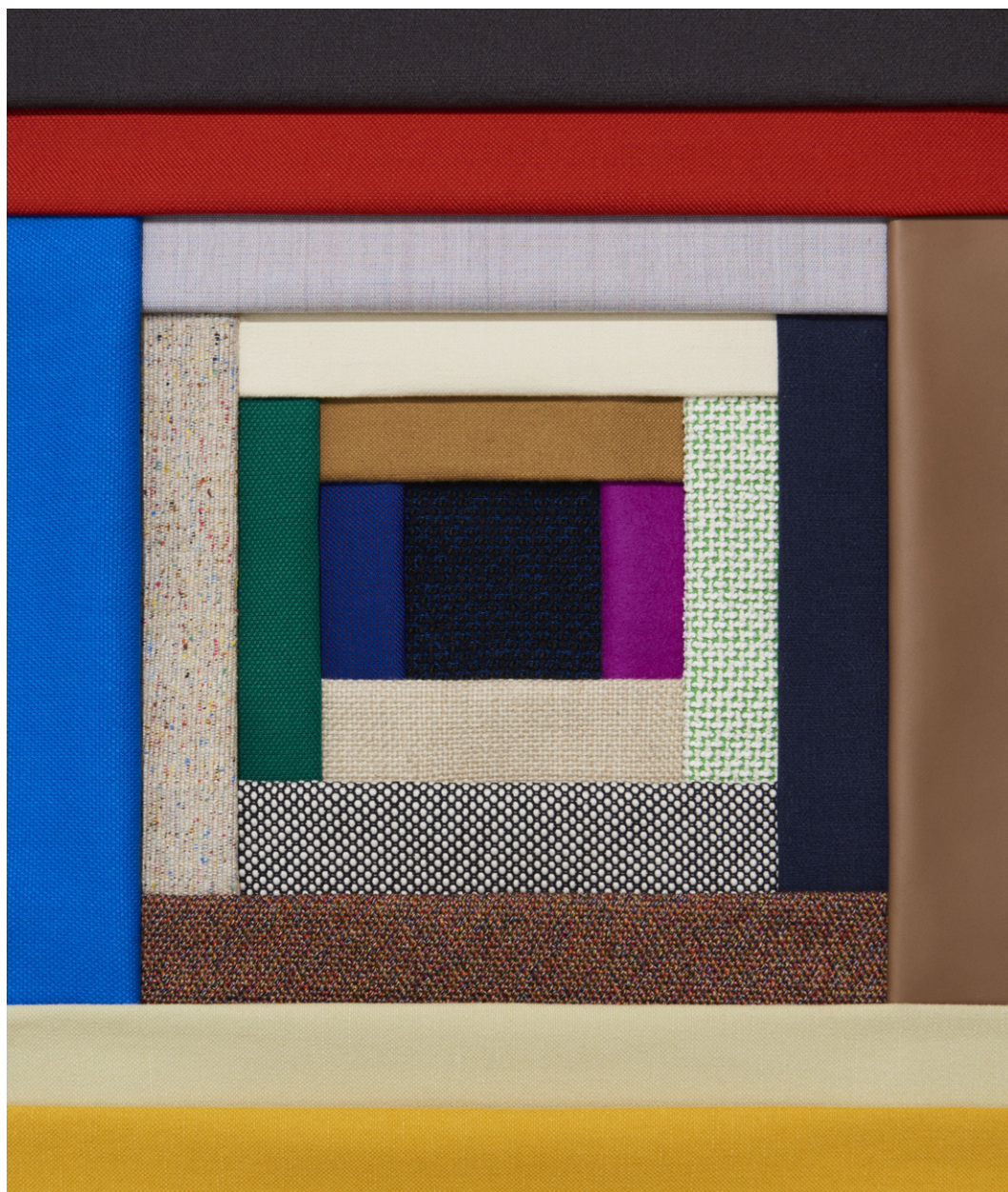


FABRIC & LEATHER

OVERVIEW



HAY FABRIC & LEATHER OVERVIEW

HAY's wide assortment of fabrics and leathers is offered in a good variety of textures, weaves, and colours, all carefully selected for their superior quality, expression, durability, strength, and functionality. All the fabrics are chosen for their ability to complement HAY's extensive assortment of furniture and can be used to cover chairs, stools, and sofas in many different domestic and contract environments.

In this overview you find colours and technical information about all fabrics and leathers in HAY's standard assortment. Furthermore you will find information about the upholstery possibilities for the different furniture models.

CONTENT

FABRIC GROUP 1

ATLAS	3
LINARA	3
LINT	3
METAPHOR	4
MODE	4
PLANAR	5
RANDOM FADE	5
REMIX 3	6
SURFACE BY HAY	6
SWARM	7
VALENCIA	7

FABRIC GROUP 2

FAIRWAY	8
FIELD 2	8
FLAMIBER	8
LINEN GRID	9
LOLA	9
MAGLIA	9
MELANGE NAP	10
NICO	10
OLAVI BY HAY	11
OSUMI	11
RELATE	11
STEELCUT 3	12
STEELCUT TRIO 3	12
TADAO	13

FABRIC GROUP 3

COMPOUND	14
DOT 1682	14
DIVINA 3	15
DIVINA MD	15
DIVINA MELANGE 3	16
FIORD 2	16
RE-WOOL	17
RODEN	17
RUSKIN	17
TARTAGLIA	18

FABRIC GROUP 4

BOLGHERI	19
CANVAS 2	19
ENCIRCLE	19
HALLINGDAL 65	20
ICE FR	20
LILA	21
RAAS	21

FABRIC GROUP 5

BALDER 3	22
HAKU	22
HARALD 3	22
LOFT	23
SIERRA LEATHER	23

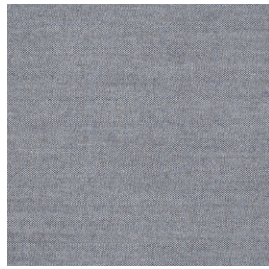
FABRIC GROUP 6

CODA 2	24
VIDAR 4	24
CALIFORNIA LEATHER	25
NEVADA LEATHER	25
SENSE LEATHER	25

UPHOLSTERY MATRIX

CHAIRS	26
STOOLS & BAR STOOLS	31
LOUNGE	32
SOFAS	34

FABRIC GROUP 1



ATLAS

Kvadrat
Design by Margrethe Odgaard

COMPOSITION
90% New wool
(worsted),
10% Nylon

DURABILITY
100.000 Martindale

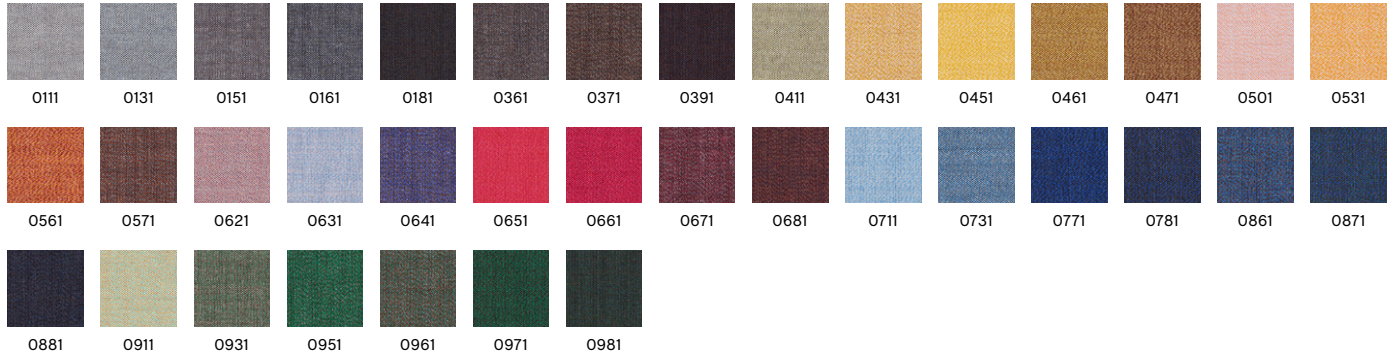
LIGHTFASTNESS
6-7

PILLING
4-5

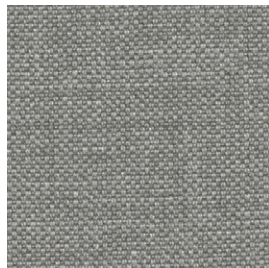
FIRE TESTS*
EN 1021-1/2
US Cal. Bull. 117-2013
BS 5852 Crib 5 with
treatment

SUSTAINABILITY
EU Ecolabel
Greenguard Gold
HPD
EPD

0131



Recommended for contract use
*Find more tests and information at kvadrat.dk



LINARA*

Romo

COMPOSITION
63% Cotton,
37% Linen

DURABILITY
36.000 Martindale

LIGHTFASTNESS
5-6

PILLING
4

FIRE TESTS
EN 1021-1/2 with FR
treatment
US Cal. Bull. 117-2013
BS 5852 Crib 5 with
treatment

443



*Only available in selected colours



LINT*

HAY
Cotton Linen Collection 2020

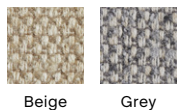
COMPOSITION
40% Acrylic, 28%
Cotton, 19% Viscose,
8% Linen, 5%
Polyester

DURABILITY
18.000 Martindale

LIGHTFASTNESS
5

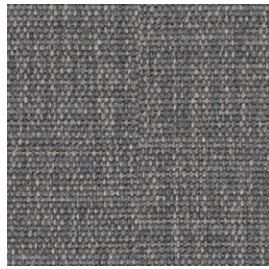
PILLING
2-3

Grey



*Not available in UK

FABRIC GROUP 1



METAPHOR

Maharam

COMPOSITION
100% Polyester

DURABILITY
90.000 Martindale

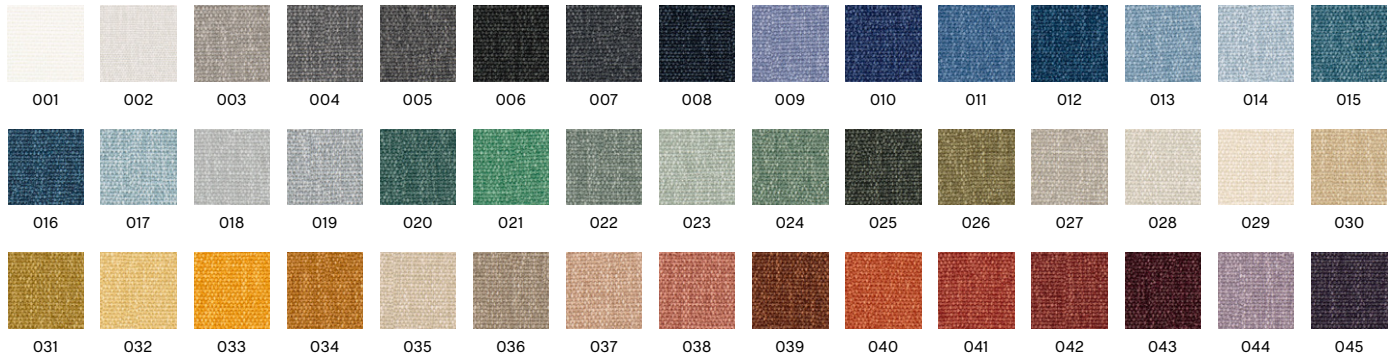
LIGHTFASTNESS
5-6

PILLING
3-4

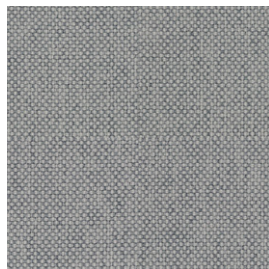
FIRE TESTS
EN 1021-1/2 with
FR treatment
US Cal. Bull. 117-2013
BS 5852 Crib 5 with
treatment

SUSTAINABILITY
Greenguard Gold
FR Free

004



Recommended for contract use



MODE

Maharam

COMPOSITION
80% Post-Consumer
recycled polyester,
20% Polyester

DURABILITY
100.000 Double rubs
(Wyzenbeek)

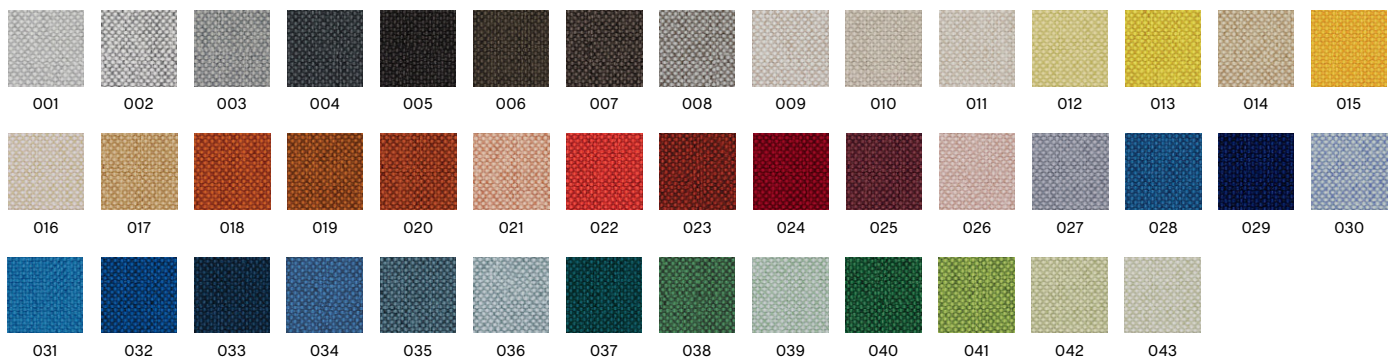
LIGHTFASTNESS
40+ Hours

PILLING
CLASS 4

FIRE TESTS
EN 1021-1/2 with
FR treatment
US Cal. Bull. 117-2013
BS 5852 Crib 5 with
treatment

SUSTAINABILITY
Greenguard Gold
Contains Recycled
Content
FR Free

003



Recommended for contract use

FABRIC GROUP 1



PLANAR*

HAY

COMPOSITION
60% Cotton,
40% Linen

DURABILITY
40.000 Martindale

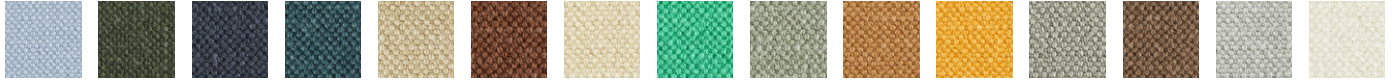
LIGHTFASTNESS
5

PILLING
4

FIRE TESTS
US Cal. Bull. 117-2013

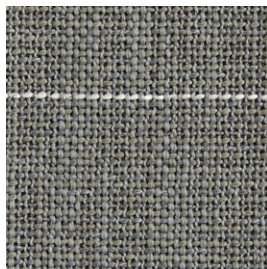
SUSTAINABILITY
OEKO-TEX®
STANDARD 100

747



366 722 725 726 728 729 731 732 735 739 745 747 749 756 757

*Not available in UK



RANDOM FADE

HAY

Cotton Linen Collection 2020

COMPOSITION
30% Acrylic, 25%
Wool, 21% Polyester,
14% Cotton, 10%
Polyamide

DURABILITY
35.000 Martindale

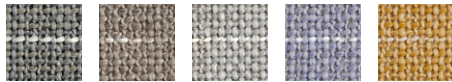
LIGHTFASTNESS
5

PILLING
3-4

FIRE TESTS
EN 1021-1/2 with FR
treatment

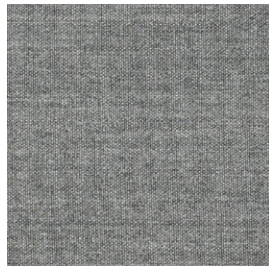
SUSTAINABILITY
OEKO-TEX®
STANDARD 100

Army



Army Beige Light grey Lilac Yellow

FABRIC GROUP 1



REMIX 3

Kvadrat
Design by Giulio Ridolfo

COMPOSITION
90% new wool
(worsted),
10% nylon

DURABILITY
100.000 Martindale

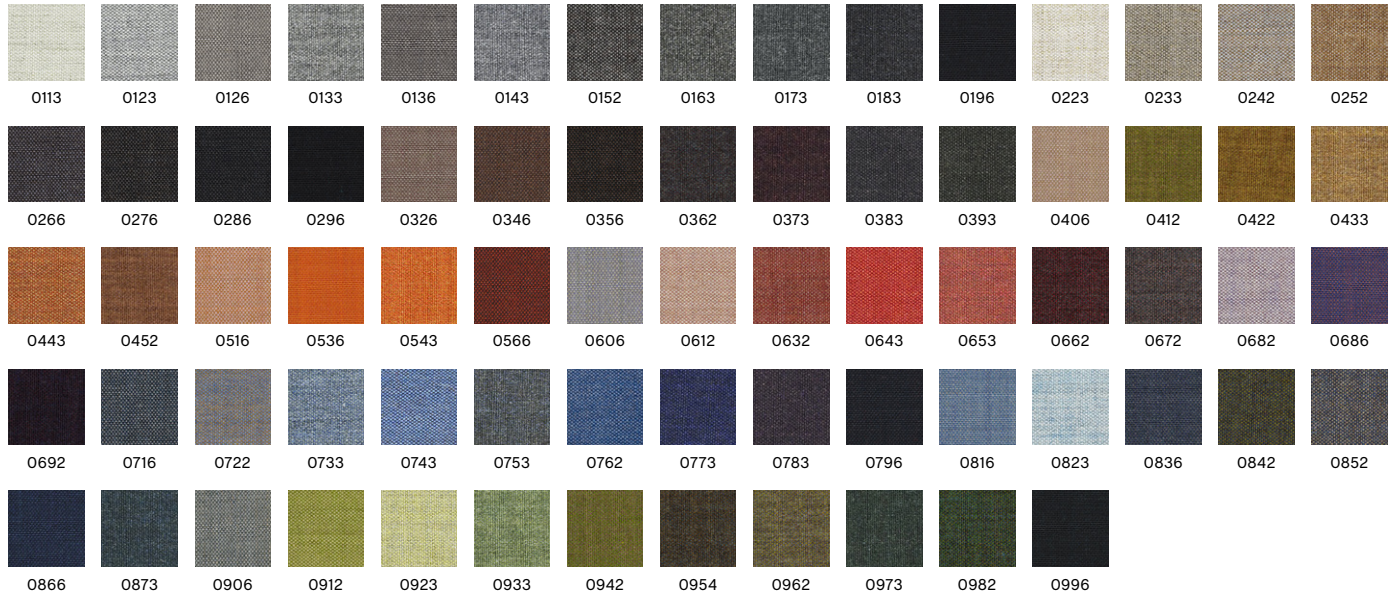
LIGHTFASTNESS
5-7

PILLING
4

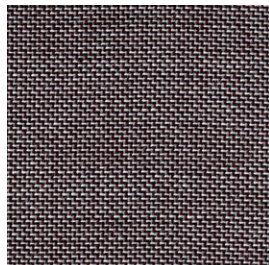
FIRE TESTS*
EN 1021-1/2
US Cal. Bull. 117-2013
BS 5852 Crib 5 with
treatment

SUSTAINABILITY
EU Ecolabel
Greenguard Gold
HPD
EPD

0133



Recommended for contract use
*Find more tests and information at kvadrat.dk



SURFACE BY HAY

Kvadrat
Design by Louise Sigvardt & HAY

COMPOSITION
90% New wool
(worsted),
10% Nylon

DURABILITY
100.000 Martindale

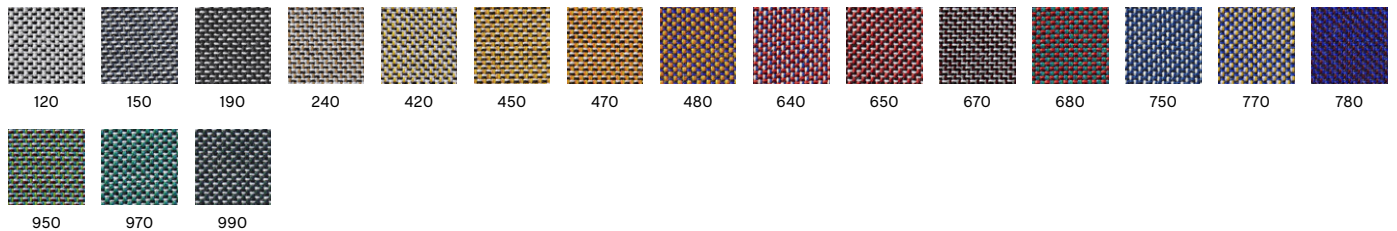
LIGHTFASTNESS
5-6

PILLING
3-4

FIRE TESTS
EN 1021-1/2
US Cal. Bull. 117-2013
BS 5852 Crib 5 with
treatment

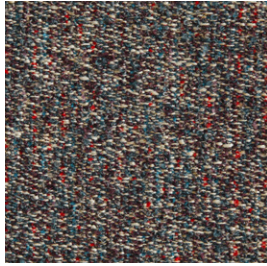
SUSTAINABILITY
EU Ecolabel
Greenguard Gold

670



Recommended for contract use

FABRIC GROUP 1



SWARM

HAY
Cotton Linen Collection 2020

COMPOSITION
31% Acrylic, 17%
Cotton, 8% Linen,
36% Polyester, 8%
Viscose

DURABILITY
28.000 Martindale

LIGHTFASTNESS
5

PILLING
3-4

FIRE TESTS
EN 1021-1/2 with FR
treatment

Multi colour



VALENCIA™

Spradling

COMPOSITION
Vinyl / Urethane
Topcoat

DURABILITY
300.000 Martindale

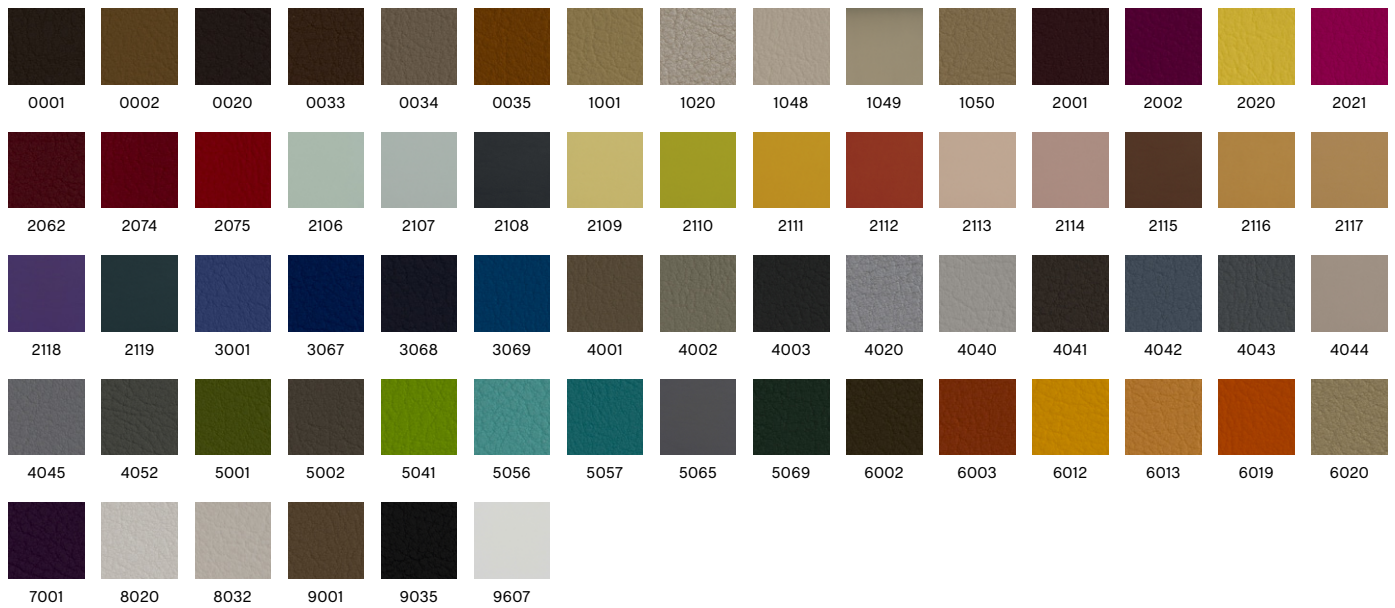
LIGHTFASTNESS
4-5

**COLOUR
FASTNESS TO
RUBBING DRY**
5-4/5

**COLOUR
FASTNESS TO
RUBBING WET**
5-4/5

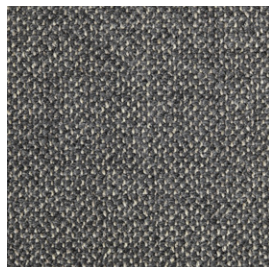
FIRE TESTS
EN 1021-1/2
US Cal. Bull. 117-2013
BS 5852 Crib 5
(Valencia C5)

4020



Recommended for contract use

FABRIC GROUP 2



FAIRWAY

HAY

Wool Cotton Collection 2019

COMPOSITION

34% Acrylic, 26% Polyester, 22% Wool, 12% Cotton, 2% Viscose, 2% Linen

DURABILITY

60.000 Martindale

LIGHTFASTNESS

5

PILLING

4

FIRE TESTS

EN 1021-1/2
US Cal. Bull. 117-2013
with FR treatment

SUSTAINABILITY

OEKO-TEX®
STANDARD 100

Grey 307-201



Grey
307-201



Dark blue
308-288

Recommended for contract use



FIELD 2

Kvadrat

COMPOSITION

100% Trevira CS

DURABILITY

80.000 Martindale

LIGHTFASTNESS

7

PILLING

4-5

FIRE TESTS*

EN 1021-1/2
US Cal. Bull. 117-2013
BS 5852 Crib 5

SUSTAINABILITY

EU Ecolabel
Greenguard Gold

0233



0123



0132



0142



0173



0182



0192



0222



0233



0242



0343



0373



0443



0463



0623



0643



0662



0663



0673



0693



0723



0733



0763



0773



0782



0793



0843



0933



0943



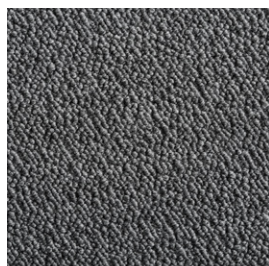
0963



0983

Recommended for contract use

*Find more tests and information at kvadrat.dk



FLAMIBER*

HAY

COMPOSITION

33% Acrylic, 30% Wool, 29% Cotton, 7% Polyester, 1% Viscose

DURABILITY

120.000 Martindale

LIGHTFASTNESS

5-6

PILLING

4-5

FIRE TESTS

US Cal. Bull. 117-2013

Charcoal C8



Charcoal
C8



Cream
A5



Dark blue
J4



Grey
C8



Petrol Blue
J4



Mimosa
E9



Sand
J7



Olive
E9



Ice blue
J7



Mandarin
E9



Light grey
J7

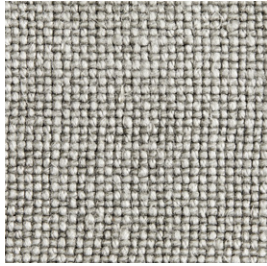


Carne
J7

Recommended for contract use

*Not available in UK

FABRIC GROUP 2

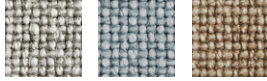


LINEN GRID*

HAY
Cotton Linen Collection 2020

COMPOSITION 100% Linen	DURABILITY 25.000 Martindale	LIGHTFASTNESS 3-5	PILLING 3	FIRE TESTS US Cal. Bul. 117-2013
---------------------------	---------------------------------	----------------------	--------------	-------------------------------------

Adriatic blue



Adriatic blue Blue Dark beige

*Not available in UK

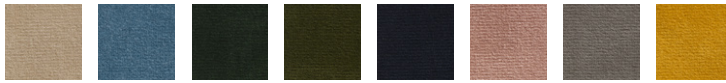


LOLA*

HAY

COMPOSITION 82% Cotton, 9% Modal, 9% Polyester	DURABILITY 100.000 Martindale	LIGHTFASTNESS 5-6	FIRE TESTS EN 1021-1
--	----------------------------------	----------------------	-------------------------

Rose



Beige Blue Dark green Moss Navy Rose Warm grey Yellow

Recommended for contract use

*Not available in UK



MAGLIA

HAY

COMPOSITION 42% Viscose, 36% Cotton, 16% Acrylic, 6% Polyester	DURABILITY 35.000 Martindale	LIGHTFASTNESS 5	PILLING 4-5	FIRE TESTS* EN 1021-1/2 US Cal. Bul. 117-2013 BS 5852 Crib 5 with treatment
--	---------------------------------	--------------------	----------------	---

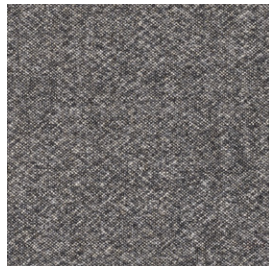
Cream



Blue black Cream Dark green Olive Petrol blue Warm grey

*Not available in UK

FABRIC GROUP 2



MELANGE NAP

Kvadrat
Design by Akira Minagawa

COMPOSITION
97% new wool
(worsted),
3% nylon

DURABILITY
60.000 Martindale

LIGHTFASTNESS
6

PILLING
3

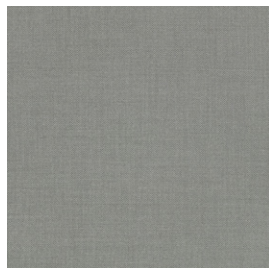
FIRE TESTS*
EN 1021-1/2
US Cal. Bull. 117-2013
BS 5852 Crib 5 with
treatment

SUSTAINABILITY
EU Ecolabel
Greenguard Gold
HPD
EPD

0171



Recommended for contract use
*Find more tests and information at kvadrat.dk



NICO MAHARAM

COMPOSITION
63% Wool,
21% Polyester,
16% Nylon

DURABILITY
100.000 Martindale

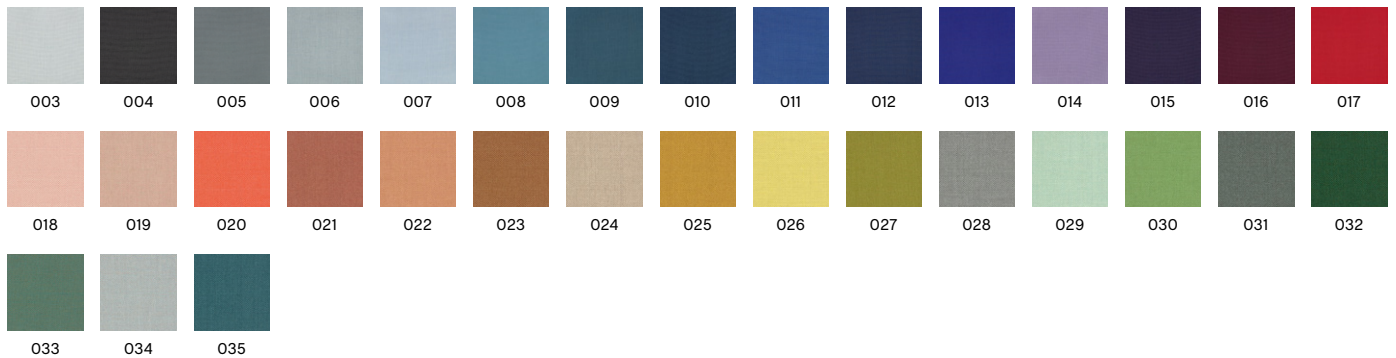
LIGHTFASTNESS
3-6

PILLING
3-4

FIRE TESTS
EN 1021-1/2
US Cal. Bull. 117-2013
BS 5852 Crib 5 with
treatment**

SUSTAINABILITY
Greenguard Gold
FR Free
PFAS Free

028



Recommended for contract use

FABRIC GROUP 2



OLAVI BY HAY

Romo & HAY

COMPOSITION
54% Polyester, 26%
Acrylic, 20% Cotton

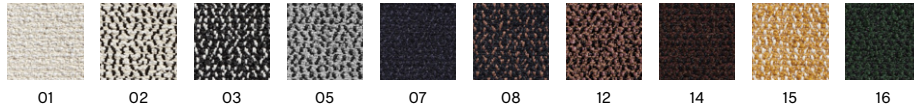
DURABILITY
70.000 Martindale

LIGHTFASTNESS
5-6

PILLING
3-4

FIRE TESTS
1021-1/2 with FR
treatment
US Cal. Bul. 117-2013

02



Recommended for contract use



OSUMI*

ROMO

COMPOSITION
80% Cotton,
20% Polyester

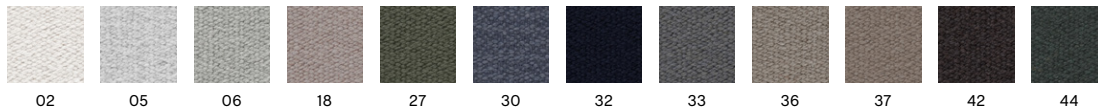
DURABILITY
75.000 Martindale

LIGHTFASTNESS
5

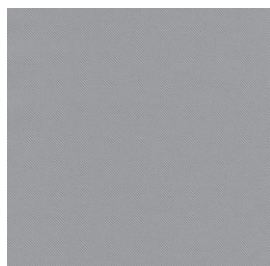
PILLING
4

FIRE TESTS
EN 1021-1/2
US Cal. Bul. 117-2013
BS 5852 Crib 5
With FR Treatment

06



Recommended for contract use
*Only available in selected colours



RELATE

Kvadrat
Design by Patricia Urquiola

COMPOSITION
100% Trevira CS

DURABILITY
80.000 Martindale

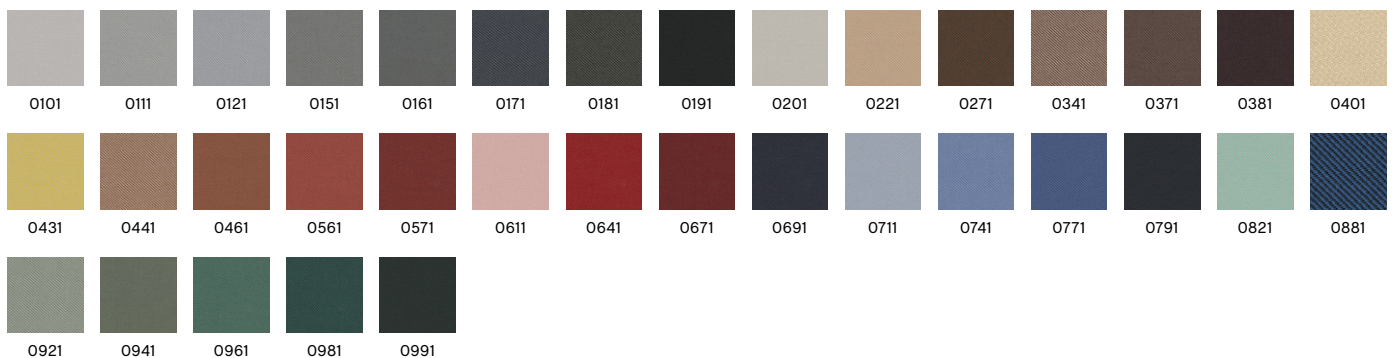
LIGHTFASTNESS
5-7

PILLING
4-5

FIRE TESTS*
EN 1021-1/2
US Cal. Bul. 117-2013
BS 5852 Crib 5

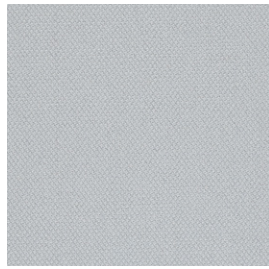
SUSTAINABILITY
EU Ecolabel
Greenguard Gold

0121



Recommended for contract use
*Find more tests and information at kvadrat.dk

FABRIC GROUP 2



STEELCUT 3

Kvadrat

Design by Frans Dijkmeijer & Giulio Ridolfo

COMPOSITION
90% new wool
(worsted),
10% nylon

DURABILITY
100.000 Martindale

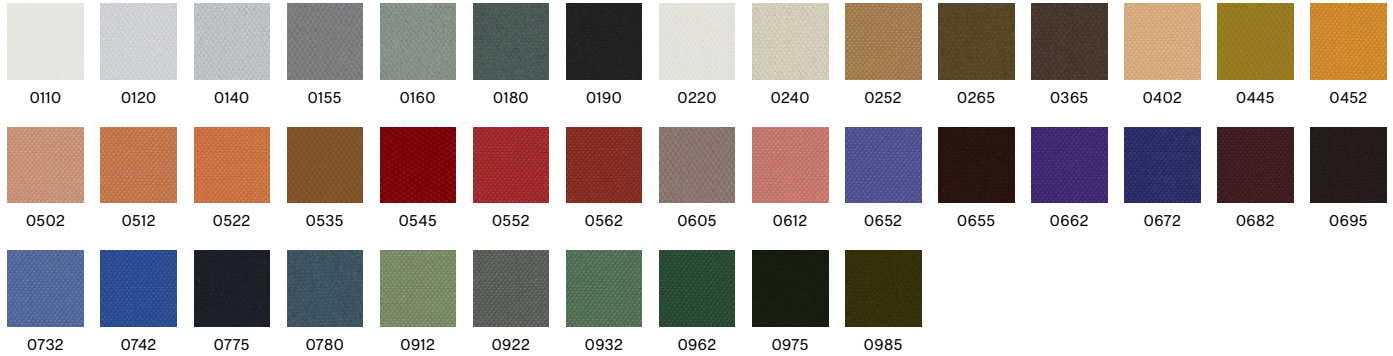
LIGHTFASTNESS
5-7

PILLING
3-4

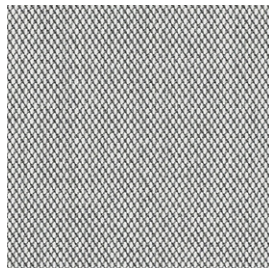
FIRE TESTS*
EN 1021-1/2
US Cal. Bull. 117-2013
BS 5852 Crib 5 with
treatment

SUSTAINABILITY
EU Ecolabel
Greenguard Gold
HPD
EPD

0140



Recommended for contract use
*Find more tests and information at kvadrat.dk



STEELCUT TRIO 3

Kvadrat

Design by Frans Dijkmeijer & Giulio Ridolfo

COMPOSITION
90% new wool
(worsted),
10% nylon

DURABILITY
100.000 Martindale

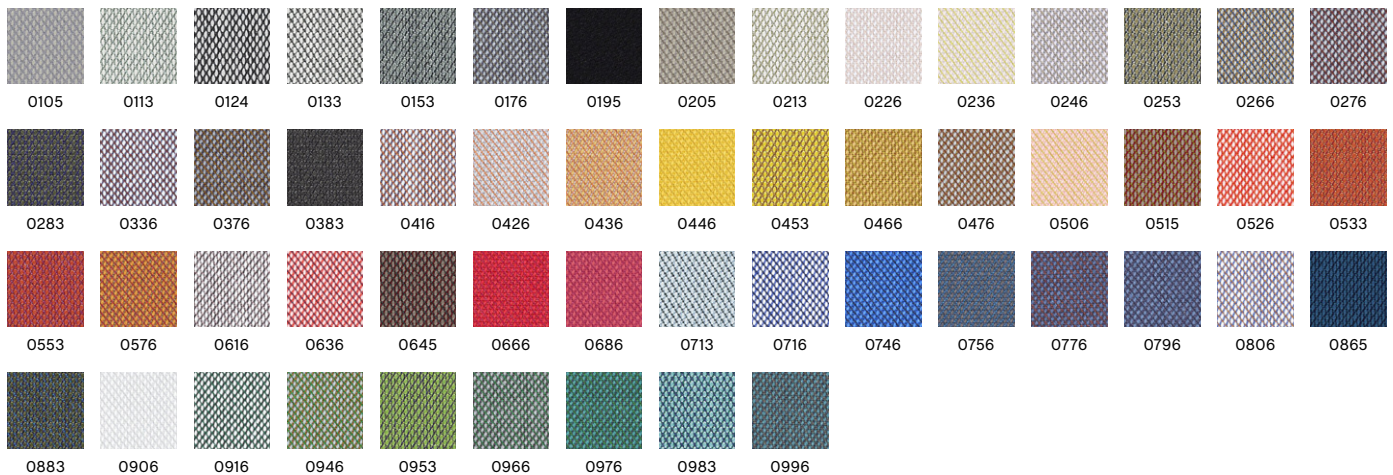
LIGHTFASTNESS
5-7

PILLING
4

FIRE TESTS*
EN 1021-1/2
US Cal. Bull. 117-2013
BS 5852 Crib 5 with
treatment

SUSTAINABILITY
EU Ecolabel
Greenguard Gold
HPD
EPD

0133



Recommended for contract use
*Find more tests and information at kvadrat.dk

FABRIC GROUP 2



TADAO HAY

COMPOSITION
46% Wool, 20% Linen,
19% Polyester,
15% Cotton

DURABILITY
40.000 Martindale

LIGHTFASTNESS
4

PILLING
4

FIRE TESTS*
EN 1021-1/2
US Cal. Bull. 117-2013
BS 5852 Crib 5
with treatment

720



200



410

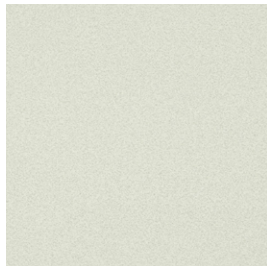


600



720

FABRIC GROUP 3



COMPOUND

Maharam

COMPOSITION
100% Polyurethane

DURABILITY
100.000 Martindale

LIGHTFASTNESS
7

PILLING
5

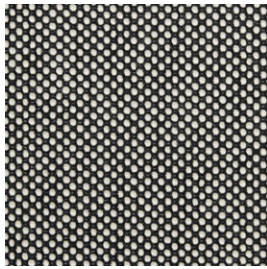
FIRE TESTS*
EN 1021-1/2 with FR treatment
US Cal. Bull. 117-2013
BS 5852 Crib 5 with treatment

SUSTAINABILITY
Greenguard Gold
Pfas-free

0001



Recommended for contract use
*Find more tests and information at maharam.com



DOT 1682

HAY

Wool Cotton Collection 2019

COMPOSITION
55% Wool,
45% Cotton

DURABILITY
50.000 Martindale

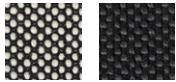
LIGHTFASTNESS
4-5

PILLING
3-4

FIRE TESTS
EN 1021-1/2
US Cal. Bull. 117-2013

SUSTAINABILITY
OEKO-TEX®
STANDARD 100

02 Bianco/Nero



02 Bianco/Nero
03 Anthracite

FABRIC GROUP 3

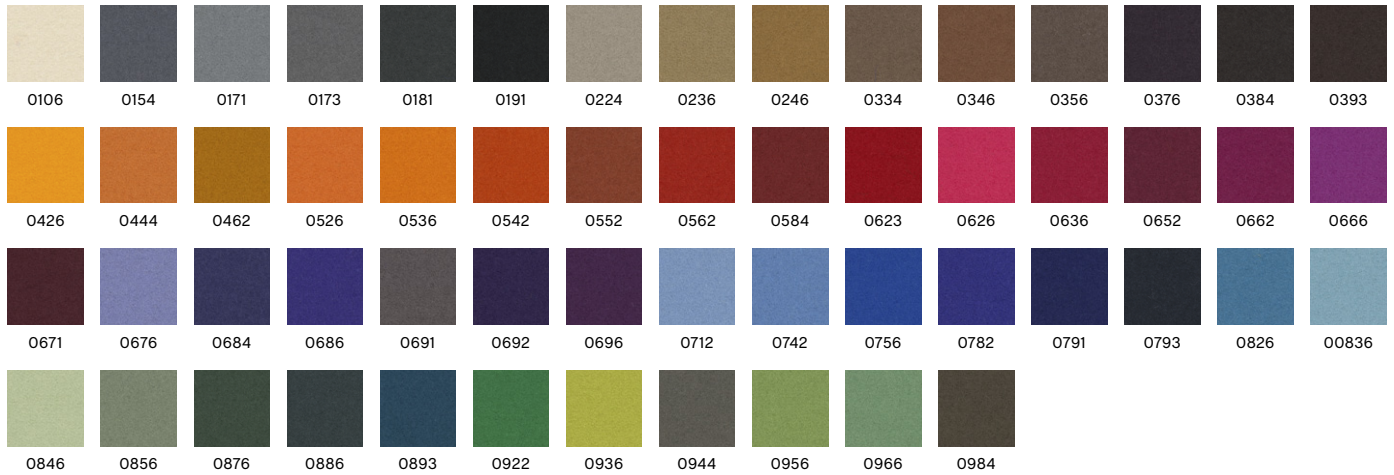


DIVINA 3

Kvadrat
Design by Finn Sködt

COMPOSITION 100% new wool	DURABILITY 45.000 Martindale	LIGHTFASTNESS 5-7	PILLING 3	FIRE TESTS* EN 1021-1/2 US Cal. Bull. 117-2013 BS 5852 Crib 5 with treatment	SUSTAINABILITY EU Ecolabel Greenguard Gold HPD EPD
-------------------------------------	--	-----------------------------	---------------------	---	---

0173



Recommended for contract use
*Find more tests and information at kvadrat.dk

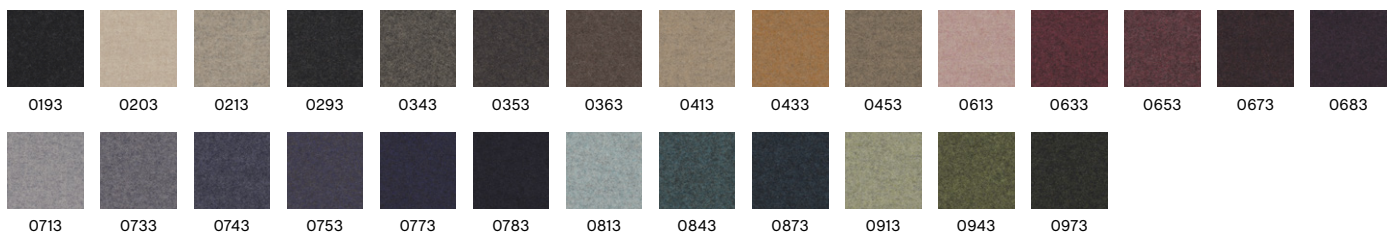


DIVINA MD

Kvadrat
Design by Finn Sködt

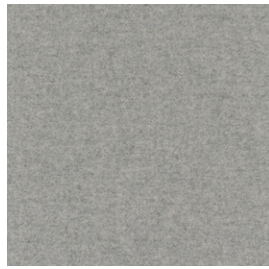
COMPOSITION 100% new wool	DURABILITY 45.000 Martindale	LIGHTFASTNESS 5-6	PILLING 3	FIRE TESTS* EN 1021-1/2 US Cal. Bull. 117-2013 BS 5852 Crib 5 with treatment	SUSTAINABILITY EU Ecolabel Greenguard Gold HPD EPD
-------------------------------------	--	-----------------------------	---------------------	---	---

0713



Recommended for contract use
*Find more tests and information at kvadrat.dk

FABRIC GROUP 3



DIVINA MELANGE 3

Kvadrat

Design by Finn Sködt

COMPOSITION
100% new wool

DURABILITY
45.000 Martindale

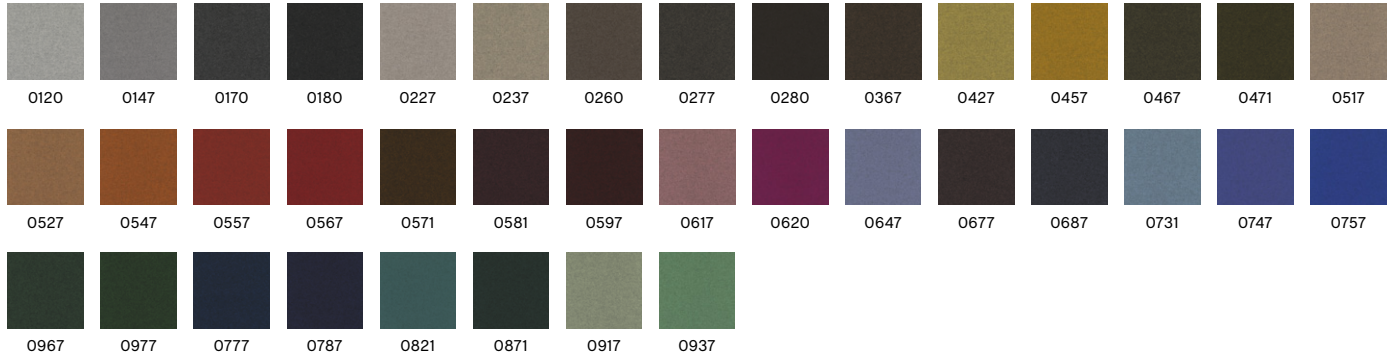
LIGHTFASTNESS
5-7

PILLING
3

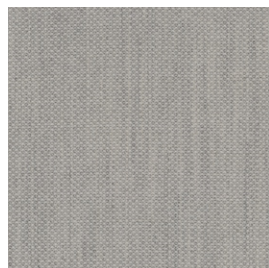
FIRE TESTS*
EN 1021-1/2
US Cal. Bull. 117-2013
BS 5852 Crib 5
with treatment

SUSTAINABILITY
EU Ecolabel
Greenguard Gold
HPD
EPD

0120



Recommended for contract use
*Find more tests and information at kvadrat.dk



FIORD 2

Kvadrat

Design by Louise Sigvardt

COMPOSITION
92% New wool
(worsted), 8% Nylon

DURABILITY
60.000 Martindale

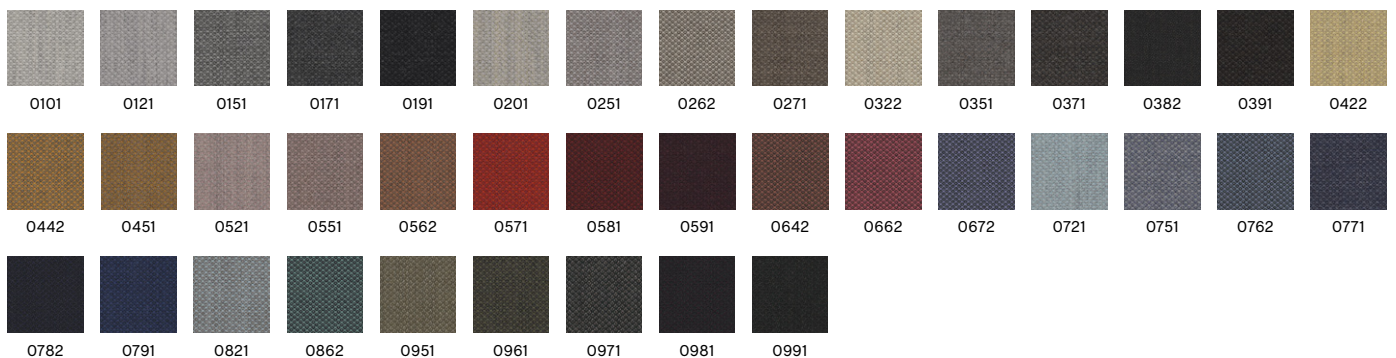
LIGHTFASTNESS
5-7

PILLING
4-5

FIRE TESTS*
EN 1021-1/2
US Cal. Bull. 117-2013
BS 5852 Crib 5 with
treatment

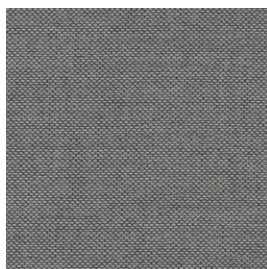
SUSTAINABILITY
EU Ecolabel
Greenguard Gold
HPD
EPD

0101



Recommended for contract use
*Find more tests and information at kvadrat.dk

FABRIC GROUP 3



RE-WOOL

Kvadrat
Design by Margrethe Odgaard

COMPOSITION
45% Recycled wool,
45% New wool
(worsted), 10% Nylon

DURABILITY
100.000 Martindale

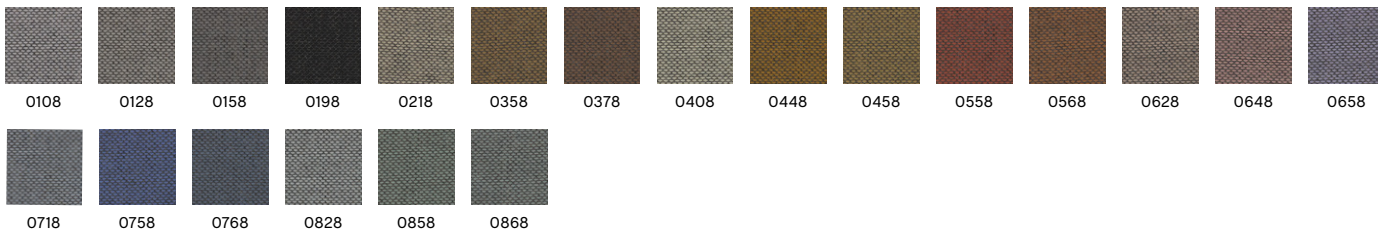
LIGHTFASTNESS
5-7

PILLING
4

FIRE TESTS*
EN 1021-1/2
US Cal. Bull. 117-2013
BS 5852 Crib 5 with
treatment

SUSTAINABILITY
EU Ecolabel
Greenguard Gold
HPD

0828



0108 0128 0158 0198 0218 0358 0378 0408 0448 0458 0558 0568 0628 0648 0658
0718 0758 0768 0828 0858 0868

Recommended for contract use
*Find more tests and information at kvadrat.dk



RODEN*

Romo

COMPOSITION
55% Viscose, 24%
Linen, 10% Cotton,
8% Polyester, 3%
Polyamide

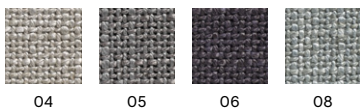
DURABILITY
50.000 Martindale

LIGHTFASTNESS
5-6

PILLING
2-3

FIRE TESTS
EN 1021-1/2
US Cal. Bull. 117-2013
BS 5852 Crib 5 with
treatment

04



04 05 06 08

*Only available in selected colours



RUSKIN*

Romo

COMPOSITION
70% Viscose, 15%
Linen, 10% Wool, 5%
Polyamide

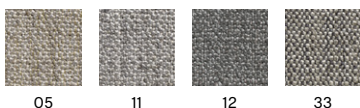
DURABILITY
60.000 Martindale

LIGHTFASTNESS
5

PILLING
3

FIRE TESTS
EN 1021-1/2
BS 5852 Crib 5 with
treatment

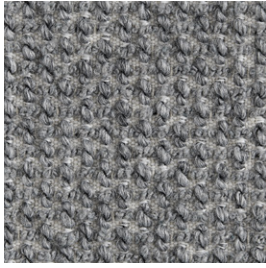
11



05 11 12 33

*Only available in selected colours

FABRIC GROUP 3



TARTAGLIA HAY

COMPOSITION
35% Cotton, 25%
Acrylic,
35% Polyester,
5% Wool

DURABILITY
70.000 Martindale

LIGHTFASTNESS
5

PILLING
4-5

FIRE TESTS*
EN 1021-1/2 with FR
treatment
US Cal. Bull. 117-2013

1346



1004



1346



857



861



864



867



871



989

Recommended for contract use

FABRIC GROUP 4



LGG60

BOLGHERI

HAY

Wool Cotton Collection 2019

COMPOSITION

35% Viscose, 26%
Wool, 17% Polyamide,
15% Silk, 7% Linen

DURABILITY

30.000 Martindale

LIGHTFASTNESS

5

PILLING

3-4

FIRE TESTS

EN 1021-1/2
US Cal. Bull. 117-2013

SUSTAINABILITY

OEKO-TEX®
STANDARD 100

Recommended for contract use



0124

CANVAS 2

Kvadrat

Design by Giulio Ridolfo

COMPOSITION

90% New wool
(worsted), 10% Nylon

DURABILITY

100.000 Martindale

LIGHTFASTNESS

5-6

PILLING

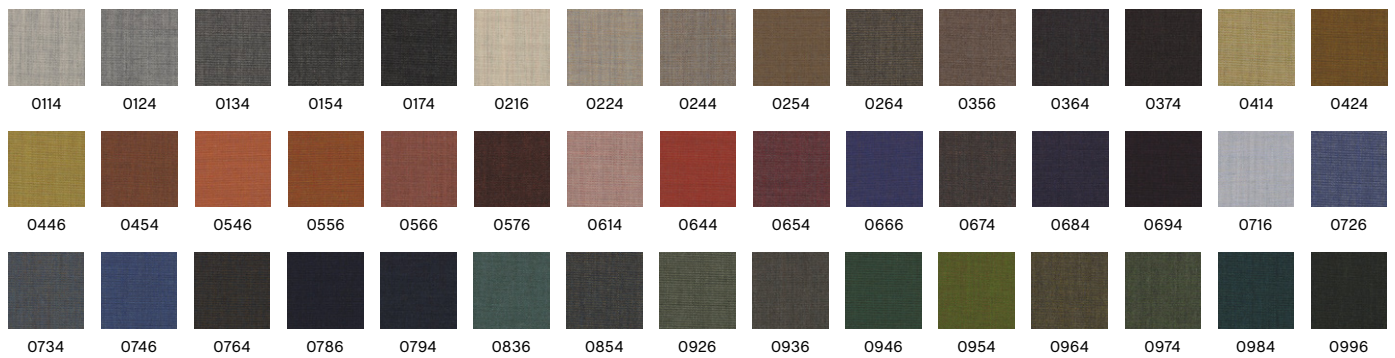
4

FIRE TESTS*

EN 1021-1/2
US Cal. Bull. 117-2013
BS 5852 Crib 5 with
treatment

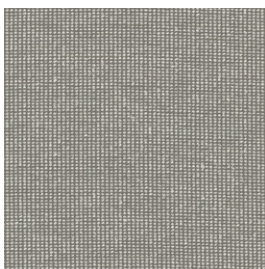
SUSTAINABILITY

EU Ecolabel
Greenguard Gold
HPD
EPD



Recommended for contract use

*Find more tests and information at kvadrat.dk



0222

ENCIRCLE

Kvadrat

Design by Karin an Rijlaarsdam

COMPOSITION

100% Trevira CS

DURABILITY

80.000 Martindale

LIGHTFASTNESS

5-7

PILLING

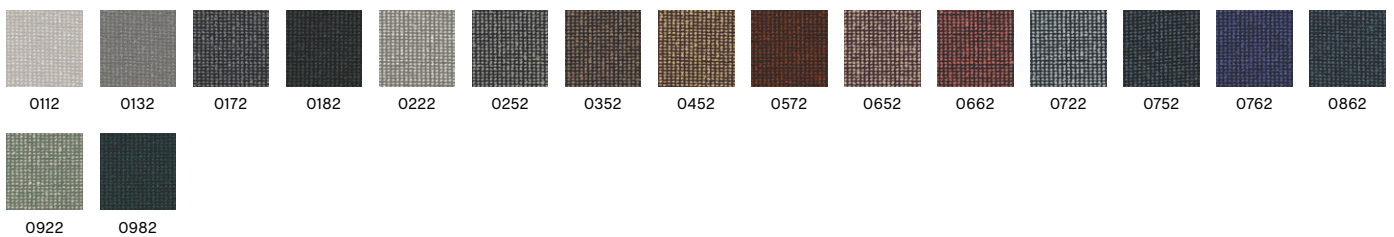
4

FIRE TESTS*

EN 1021-1/2
US Cal. Bull. 117-2013
BS 5852 Crib 5

SUSTAINABILITY

Greenguard Gold



Recommended for contract use

*Find more tests and information at kvadrat.dk

FABRIC GROUP 4



HALLINGDAL 65

Kvadrat
Design by Nanna Ditzel

COMPOSITION
70% New wool,
30% Viscose

DURABILITY
100.000 Martindale

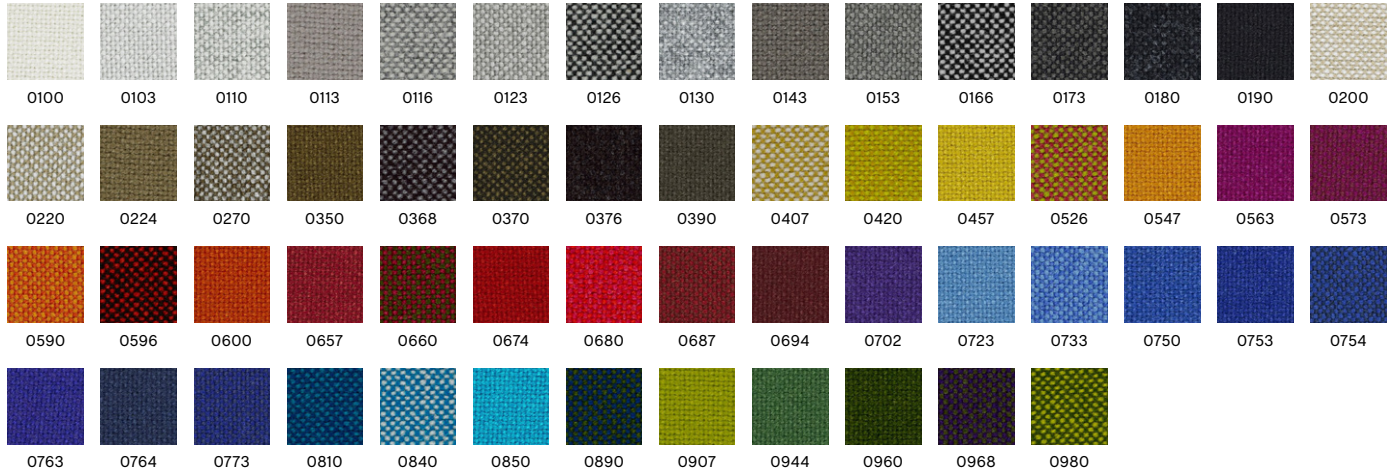
LIGHTFASTNESS
5-7

PILLING
3-4

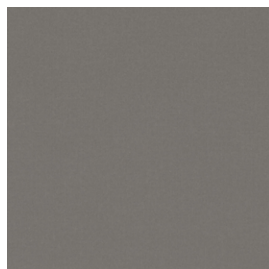
FIRE TESTS*
EN 1021-1/2
US Cal. Bull. 117-2013
BS 5852 Crib 5

SUSTAINABILITY
EU Ecolabel
Greenguard Gold
HPD
EPD

0100



Recommended for contract use
*Find more tests and information at kvadrat.dk



ICE FR*

Romo

COMPOSITION
82% Cotton,
18% Polyester

DURABILITY
100.000 Martindale

LIGHTFASTNESS
5

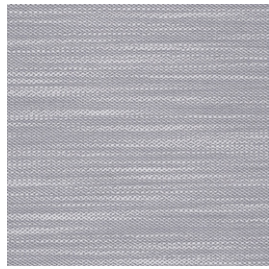
FIRE TESTS
EN 1021-1/2

15 Meteor



*Only available in UK
*Only available in selected colours

FABRIC GROUP 4



LILA

Kvadrat
Design by by Doshi Levien

COMPOSITION
92% New wool
(worsted), 8% Nylon

DURABILITY
100.000 Martindale

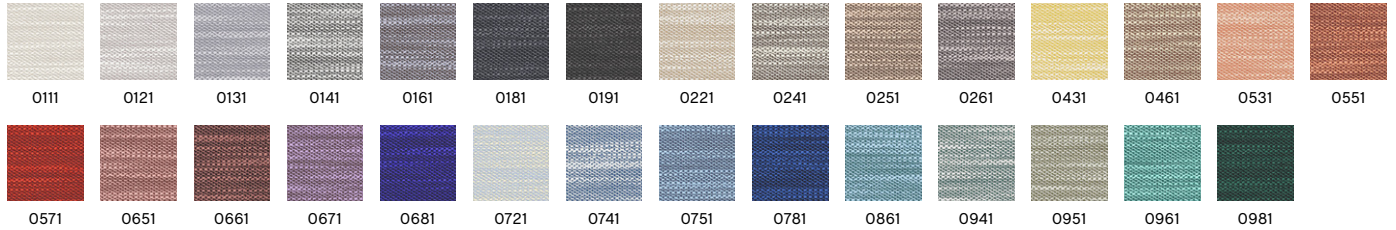
LIGHTFASTNESS
6-7

PILLING
4-5

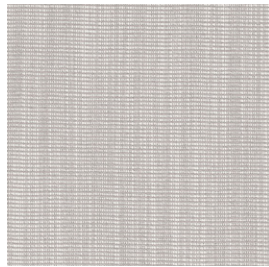
FIRE TESTS*
EN 1021-1/2
US Cal. Bull. 117-2013
BS 5852 Crib 5 with
treatment

SUSTAINABILITY
EU Ecolabel
Greenguard Gold
HPD
EPD

0131



Recommended for contract use
*Find more tests and information at kvadrat.dk



RAAS

Kvadrat
Design by by Doshi Levien

COMPOSITION
92% New wool
(worsted), 8% Nylon

DURABILITY
100.000 Martindale

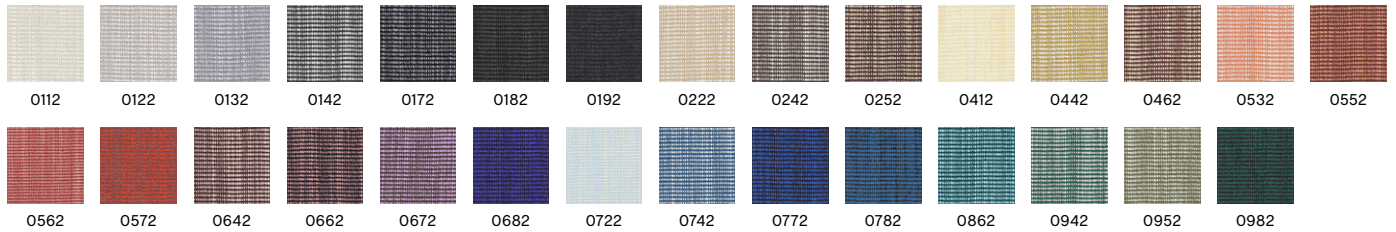
LIGHTFASTNESS
6-7

PILLING
4-5

FIRE TESTS*
EN 1021-1/2
US Cal. Bull. 117-2013
BS 5852 Crib 5 with
treatment

SUSTAINABILITY
EU Ecolabel
Greenguard Gold
HPD
EPD

0122



Recommended for contract use
*Find more tests and information at kvadrat.dk

FABRIC GROUP 5



BALDER 3

Kvadrat/Raf Simons
Design by Fanny Aronssen

COMPOSITION
68% New wool, 26%
Cotton, 6% Nylon

DURABILITY
100.000 Martindale

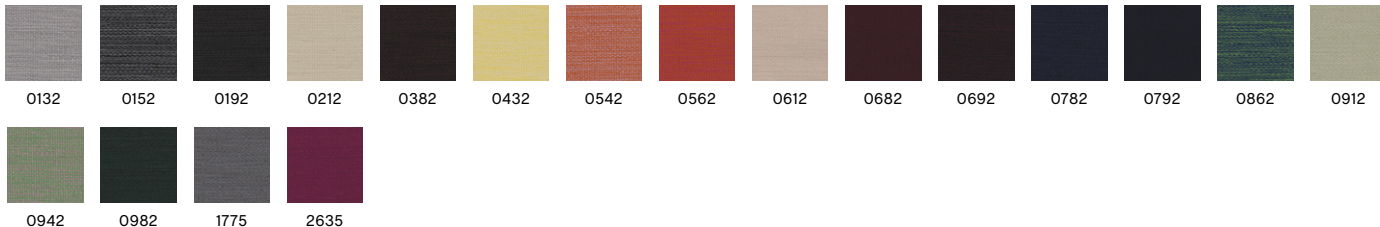
LIGHTFASTNESS
5-7

PILLING
4

FIRE TESTS*
EN 1021-1/2
US Cal. Bull. 117-2013
BS 5852 Crib 5 with
treatment

SUSTAINABILITY
Greenguard Gold
HPD
EPD

0132



Recommended for contract use
*Find more tests and information at kvadrat.dk



HAKU

Kvadrat
Design by Teruhiro Yanagihara

COMPOSITION
100% polyurethane/
silicone (surface)

DURABILITY
100.000 Martindale

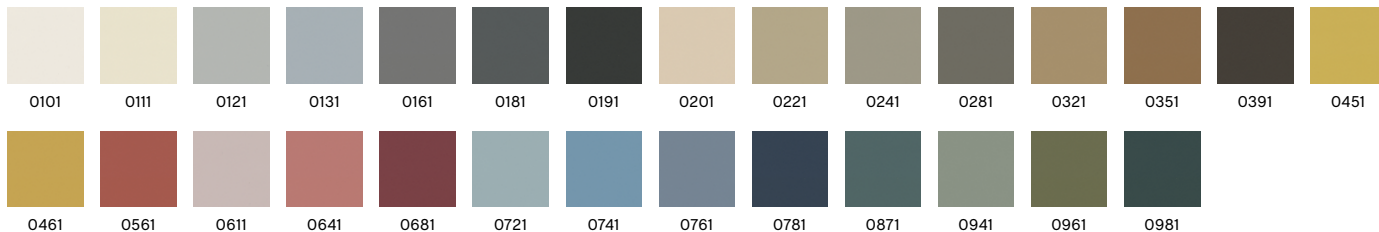
LIGHTFASTNESS
6-7

PILLING
5

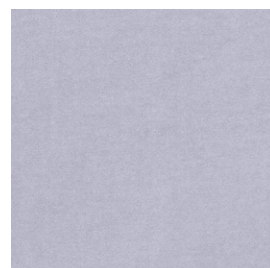
FIRE TESTS
EN 1021-1/2 with FR
treatment
US Cal.Bull.117-2013
BS 5852 Crib 5 with
treatment

SUSTAINABILITY
Greenguard Gold

0121



Recommended for contract use
*Find more tests and information at kvadrat.dk



HARALD 3*

Kvadrat/Raf Simons
Design by Fanny Aronssen

COMPOSITION
100% Cotton

DURABILITY
100.000 Martindale

LIGHTFASTNESS
5-6

PILLING
4-5

FIRE TESTS
EN 1021-1

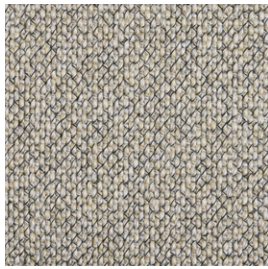
SUSTAINABILITY
Greenguard Gold
HPD
EPD

0133



Recommended for contract use
*Not available in UK

FABRIC GROUP 5



LOFT HAY

COMPOSITION
80% Viscose,
11% Polyester,
9% Cotton

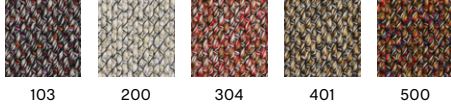
DURABILITY
>100.000 Martindale

LIGHTFASTNESS
5

PILLING
4-5

FIRE TESTS*
EN 1021-1/2
US Cal. Bull. 117-2013

200



Recommended for contract use



SIERRA LEATHER

Camo

COMPOSITION
Corrected leather

**COLOUR
FASTNESS TO
RUBBING DRY**
5

**COLOUR
FASTNESS TO
RUBBING WET**
4

LIGHTFASTNESS
7

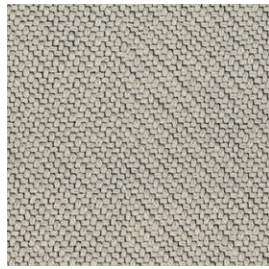
FIRE TESTS
EN 1021-1/2
US Cal. Bull. 117-2013
BS 5852 Crib 5 with
treatment

SIK1003 Cognac



Recommended for contract use

FABRIC GROUP 6



CODA 2

Kvadrat

Design by Norway Says & Per Bjørnsen

COMPOSITION

90% New wool,
10% Nylon

DURABILITY

100.000 Martindale

LIGHTFASTNESS

5-7

PILLING

4

FIRE TESTS*

EN 1021-1/2
US Cal. Bull. 117-2013
BS 5852 Crib 5 with
treatment

SUSTAINABILITY

Greenguard Gold
HPD
EPD

0100



0100



0103



0116



0182



0222



0232



0242



0362



0382



0410



0422



0442



0610



0632



0642



0722

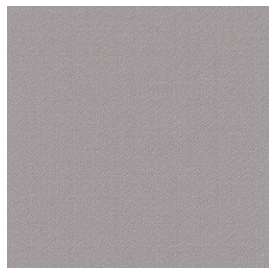


0762



0962

Recommended for contract use
*Find more tests and information at kvadrat.dk



VIDAR 4

Kvadrat/Raf Simons

Design by Fanny Aronsen

COMPOSITION

94% New wool,
6% Nylon

DURABILITY

100.000 Martindale

LIGHTFASTNESS

5-7

PILLING

4-5

FIRE TESTS*

EN 1021-1/2
US Cal. Bull. 117-2013
BS 5852 Crib 5 with
treatment

SUSTAINABILITY

EU Ecolabel
Greenguard Gold
HPD
EPD

0123



0106



0123



0133



0143



0146



0152



0182



0222



0323



0333



0353



0363



0386



0443



0456



0472



0526



0542



0554



0556



0582



0622



0633



0653



0656



0676



0693



0723



0733



0743



0772



0786



0872



0913



0932



0943



0956



0972



1062



1511



1880

Recommended for contract use
*Find more tests and information at kvadrat.dk

FABRIC GROUP 6



CALIFORNIA LEATHER

Camo

COMPOSITION Semi aniline leather	COLOUR FASTNESS TO RUBBING DRY 4	COLOUR FASTNESS TO RUBBING WET 3	LIGHTFASTNESS 4	FIRE TESTS EN 1021-1/2 US Cal. Bull. 117-2013 BS 5852 Crib 5 with treatment
-------------------------------------	---	---	--------------------	---

CA5003 Cognac



Recommended for contract use



NEVADA LEATHER*

Camo

COMPOSITION Aniline leather	COLOUR FASTNESS TO RUBBING DRY 3	COLOUR FASTNESS TO RUBBING WET 3	LIGHTFASTNESS 4	FIRE TESTS EN 1021-1/2 US Cal. Bull. 117-2013 BS 5852 Crib 5	SUSTAINABILITY Free of chrome
--------------------------------	---	---	--------------------	---	----------------------------------

NV2488S Cognac



Recommended for contract use
*Only available in selected colours

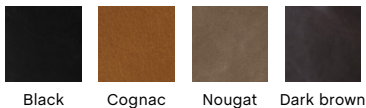


SENSE LEATHER

HAY

COMPOSITION Aniline leather	COLOUR FASTNESS TO RUBBING DRY 3	COLOUR FASTNESS TO RUBBING WET 3	LIGHTFASTNESS 3	FIRE TESTS EN 1021-1/2 US Cal. Bull. 117-2013 BS 5852 Crib 5 with treatment
--------------------------------	---	---	--------------------	---

Cognac



Recommended for contract use