

# FABRIC & LEATHER SELECTION

	CATENA	RICO DIVAN	RICO OTTOMAN	RICO LOUNGE CHAIR	RICO SOFA - 3 SEATER	RICO SOFA - 4 SEATER	KONA MATTRESS	HERMAN CHAIR	HERMAN STOOL	HERMAN LOUNGE CHAIR	HERMAN BAR CHAIR - HIGH	HERMAN BAR CHAIR - LOW	TURN DAYBED	TURN SOFA	POUF ROUND	POUF OVAL
<i>Price Group 1</i>																
Cotton Linen	•							•	•	•	•	•	•	•		
Cotton													•	•		
Faded Velvet - Nevotex		•	•	•	•	•		•	•	•	•	•	•	•	•	•
Brushed		•	•	•	•	•		•	•	•	•	•	•	•		
<i>Price Group 2</i>																
Hot Madison - JAB	•							•	•	•	•	•	•	•		
Crisp - Gabriel								•	•	•	•	•	•	•		
Wool								•	•	•	•	•	•	•		
Gaja C2C - Gabriel		•	•	•	•	•		•	•	•	•	•	•	•		
Buffalo Leather								•	•	•	•	•				
Pasadena							•						•	•		
<i>Price Group 3</i>																
Remix 2 - Kvadrat								•	•	•	•	•	•	•		
Bouclé		•	•	•	•	•		•	•	•	•	•				
Dry Cotton Slub	•															
<i>Price Group 4</i>																
Tonus 4 - Kvadrat		•	•	•	•	•		•	•	•	•	•	•	•	•	•
Steelcut 2 - Kvadrat								•	•	•	•	•	•	•		
Steelcut Trio 3 - Kvadrat								•	•	•	•	•	•	•		
Rich Linen	•															
Kuba Cay	•															
<i>Price Group 5</i>																
Hallingdal 65 - Kvadrat		•	•	•	•	•	•	•	•	•	•	•	•	•		
Fiord - Kvadrat								•	•	•	•	•	•	•		
<i>Price Group 6</i>																
Tiger Mountain - Dedar		•	•	•	•	•		•	•	•	•	•	•	•		
Vidar 3 - Kvadrat		•	•	•	•	•		•	•	•	•	•	•	•		
Nubuck Leather - Nevotex								•	•	•	•	•				
Aniline Leather - Nevotex								•	•	•	•	•				

# FABRIC OPTIONS

## PRICE GROUP 1

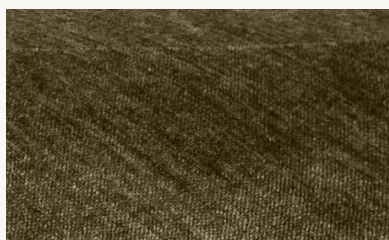
### COTTON LINEN



**Composition**  
60% cotton  
40% linen  
**Martindale**  
24.000

**Fire rating**  
CAL 117: not pass  
Crib 5: pass with treatment  
EN 1021 1/2: pass with treatment

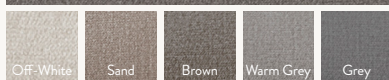
### FADED VELVET



**Composition**  
(Eros)  
51% acrylic  
40% polyester  
9% viscose  
**Martindale**  
60.000  
**Supplier**  
Nevotex

**Fire rating**  
CAL 117: pass  
Crib 5: pass with treatment  
EN 1021 1/2: pass with treatment  
**More colour options at**  
[nevotex.com](http://nevotex.com)

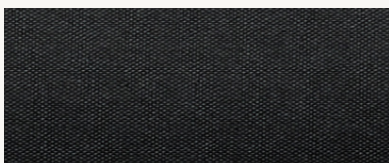
### BRUSHED



**Composition**  
100% polyester  
**Martindale**  
90.000  
**Sustainability**  
Free of heavy metals and complies with European textile standards

**Fire rating**  
CAL 117: pass with treatment  
Crib 5: pass with treatment  
EN 1021 1/2: pass with treatment

### COTTON



**Composition**  
65% cotton  
35% polyester  
**Martindale**  
30.000

**Fire rating**  
CAL 117: pass with treatment  
Crib 5: pass with treatment  
EN 1021 1/2: pass with treatment

## PRICE GROUP 2

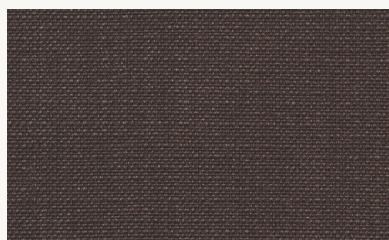
### HOT MADISON



**Composition**  
63% cotton  
37% linen  
**Martindale**  
55.000  
**Supplier**  
JAB

**Fire rating**  
CAL 117: not pass  
Crib 5: pass with treatment  
EN 1021 1/2: pass with treatment  
**More colour options at**  
[jab.de](http://jab.de)

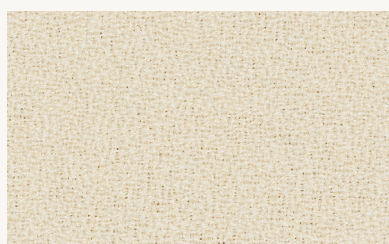
### CRISP



**Composition**  
93% New Zealand wool  
7% polyamide  
**Martindale**  
200.000  
**Supplier**  
Gabriel

**Fire rating**  
CAL 117: pass  
Crib 5: pass with treatment  
EN 1021 1/2: pass  
**More colour options at**  
[gabriel.dk](http://gabriel.dk)

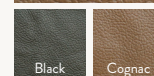
### GAJA C2C



**Composition**  
100% New Zealand wool  
**Martindale**  
50.000  
**Supplier**  
Gabriel  
**Sustainability**  
Cradle to cradle

**Fire rating**  
CAL 117: pass  
Crib 5: not pass  
EN 1021 1/2: pass

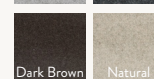
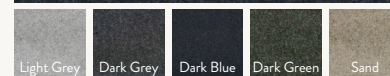
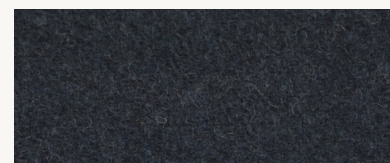
### BUFFALO LEATHER



**Composition**  
100% protected and embossed Buffalo leather

**Fire rating**  
CAL 117: pass  
Crib 5: not pass  
EN 1021 1/2: pass

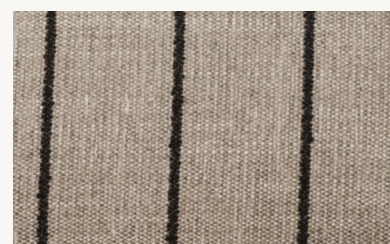
### WOOL



**Composition**  
75% wool  
25% polyester  
**Martindale**  
40.000

**Fire rating**  
CAL 117: not pass  
Crib 5: not pass  
EN 1021 1/2: pass

### PASADENA



**Composition**  
34% linen, 27% viscose, 17% polyester, 12% cotton, 8% wool, 2% acrylic  
**Martindale**  
30.000

**Fire rating**  
CAL 117: pass with treatment  
Crib 5: pass with treatment  
EN 1021 1/2: pass with treatment

# FABRIC & LEATHER SELECTION

## PRICE GROUP 3

### BOUCLÉ



**Composition**

35% acrylic  
24% polyester  
19% viscose  
14% cotton  
5% linen  
3% other fibers

**Martindale**

30.000

**Fire rating**

CAL 117: pass  
Crib 5: pass with treatment  
EN 1021 1/2: pass

## PRICE GROUP 4

### TONUS 4



**Composition**

90% new wool  
10% helanca

**Martindale**

100.000

**Supplier**

Kvadrat

**Sustainability**

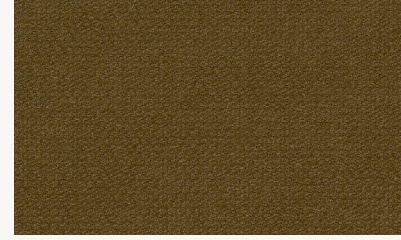
EU Ecolabel

**Fire rating**

CAL 117: pass  
Crib 5: pass with treatment  
EN 1021 1/2: pass

**More colour options at kvadrat.dk**

### STEELCUT 2



**Composition**

90% new wool  
10% nylon

**Martindale**

100.000

**Supplier**

Kvadrat

**Sustainability**

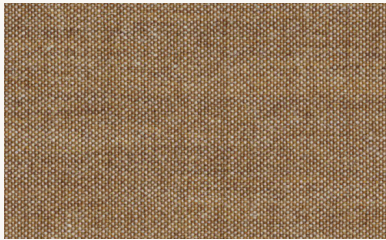
EU Ecolabel

**Fire rating**

CAL 117: pass  
Crib 5: pass with treatment  
EN 1021 1/2: pass

**More colour options at kvadrat.dk**

### REMIX 2



**Composition**

90% new wool  
10% nylon

**Martindale**

100.000

**Supplier**

Kvadrat

**Sustainability**

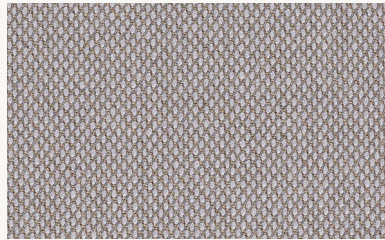
EU Ecolabel

**Fire rating**

CAL 117: pass  
Crib 5: pass with treatment  
EN 1021 1/2: pass

**More colour options at kvadrat.dk**

### STEELCUT TRIO 3



**Composition**

90% new wool  
10% nylon

**Martindale**

100.000

**Supplier**

Kvadrat

**Sustainability**

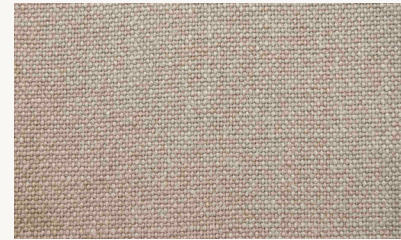
EU Ecolabel

**Fire rating**

CAL 117: pass  
Crib 5: pass with treatment  
EN 1021 1/2: pass

**More colour options at kvadrat.dk**

### RICH LINEN



**Composition**

100% linen

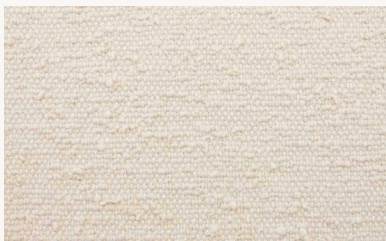
**Martindale**

20.000

**Fire rating**

CAL 117: pass with treatment  
Crib 5: pass with treatment  
EN 1021 1/2: pass with treatment

### DRY COTTON SLUB



**Composition**

90% cotton  
10% nylon

**Martindale**

20.000

**Fire rating**

CAL 117: pass with treatment  
Crib 5: pass with treatment  
EN 1021 1/2: pass with treatment

### KUBA CAY



**Composition**

38% linen, 30% viscose,  
20% jute, 12% polyester

**Martindale**

40.000

**Fire rating**

CAL 117: pass  
Crib 5: not pass  
EN 1021 1/2: pass

# FABRIC OPTIONS

## PRICE GROUP 5

### HALLINGDAL 65



**Composition**  
70% new wool  
30% viscose  
**Martindale**  
100.000  
**Supplier**  
Kvadrat  
**Sustainability**  
EU Ecolabel

**Fire rating**  
CAL 117: pass  
Crib 5: pass  
EN 1021 1/2: pass

**More colour options at**  
[kvadrat.dk](http://kvadrat.dk)

### FIORD



**Composition**  
92% wool  
8% nylon  
**Martindale**  
60.000  
**Supplier**  
Kvadrat  
**Sustainability**  
EU Ecolabel  
Natural fibres/  
sustainable resources

**Fire rating**  
CAL 117: pass  
Crib 5: pass with  
treatment  
EN 1021 1/2: pass

**More colour options at**  
[kvadrat.dk](http://kvadrat.dk)

## PRICE GROUP 6

### TIGER MOUNTAIN



**Composition**  
63% viscose  
37% cotton  
**Martindale**  
40.000  
**Supplier**  
Dedar

**Fire rating**  
CAL 117: pass  
Crib 5: not pass  
EN 1021 1/2: pass

**More colour options at**  
[dedar.com](http://dedar.com)

### VIDAR 3



**Composition**  
94% new wool  
6% nylon  
**Martindale**  
100.000  
**Supplier**  
Kvadrat  
**Sustainability**  
Natural fibres/  
sustainable resources

**Fire rating**  
CAL 117: pass  
Crib 5: not pass  
EN 1021 1/2: pass

**More colour options at**  
[kvadrat.dk](http://kvadrat.dk)

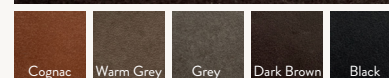
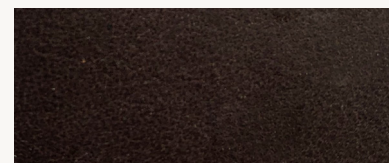
### NUBUCK LEATHER



**Composition**  
100% Nubuck leather  
**Supplier**  
Nevotex

**Fire rating**  
CAL 117: pass  
Crib 5: not pass  
EN 1021 1/2: pass

### ANILINE LEATHER



**Composition**  
100% Aniline leather  
**Supplier**  
Nevotex

**Fire rating**  
CAL 117: pass  
Crib 5: not pass  
EN 1021 1/2: pass