

Fix your Fireplace



Amantii
Electric Fireplaces

SYM-B Series

Content

- [How to replace LED light](#)
- [How to replace flicker motor](#)
- [How to replace heating element](#)
- [How to replace the PCB board](#)
- [How to replace the signal receiver](#)

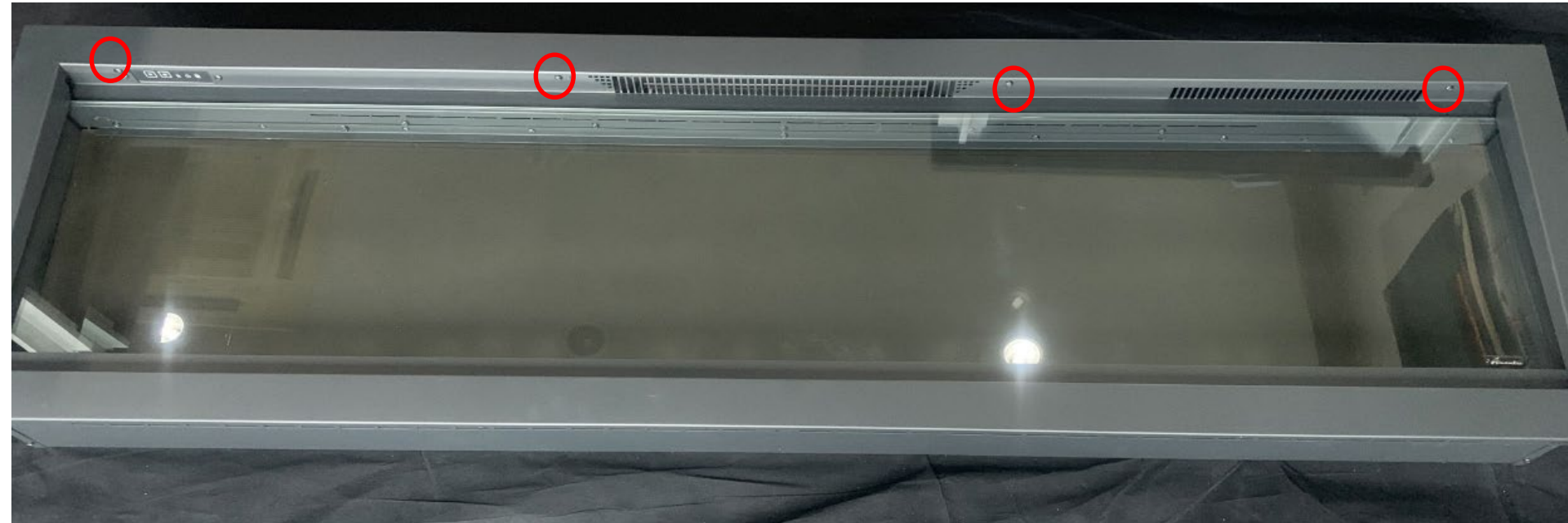
SAFETY FIRST

TO AVOID ANY ELECTRICAL SHOCK OR POTENTIAL DAMAGE TO THE UNIT REMEMBER TO TURN THE POWER OFF TO THE UNIT BEFORE ATTEMPTING TO REMOVE OR INSTALL ANY PARTS.

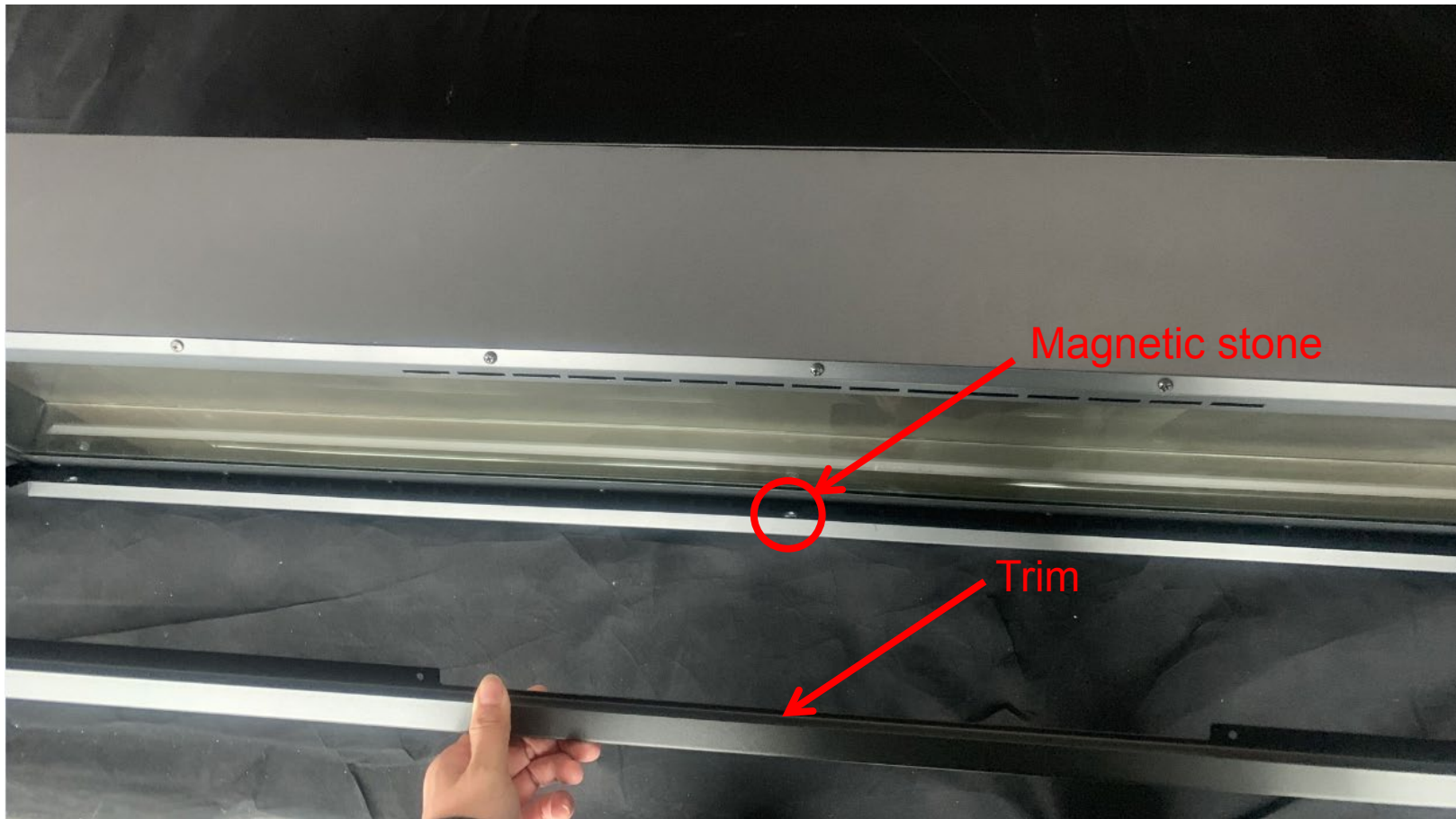


Replace LED light

Replace ember bed LED light



Step 1 Unscrew the 4 screws circled in red to **remove** the trim.



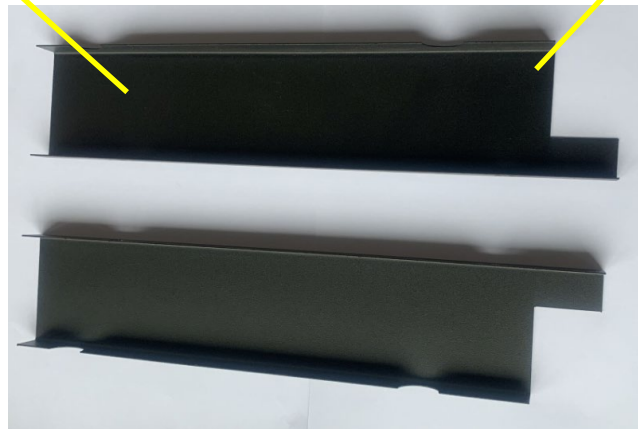
Please note **The bottom of the trim is secured to the face by a magnetic stone.**

Step 2 After the trim's been removed, take off the front glass panel.



Step 3

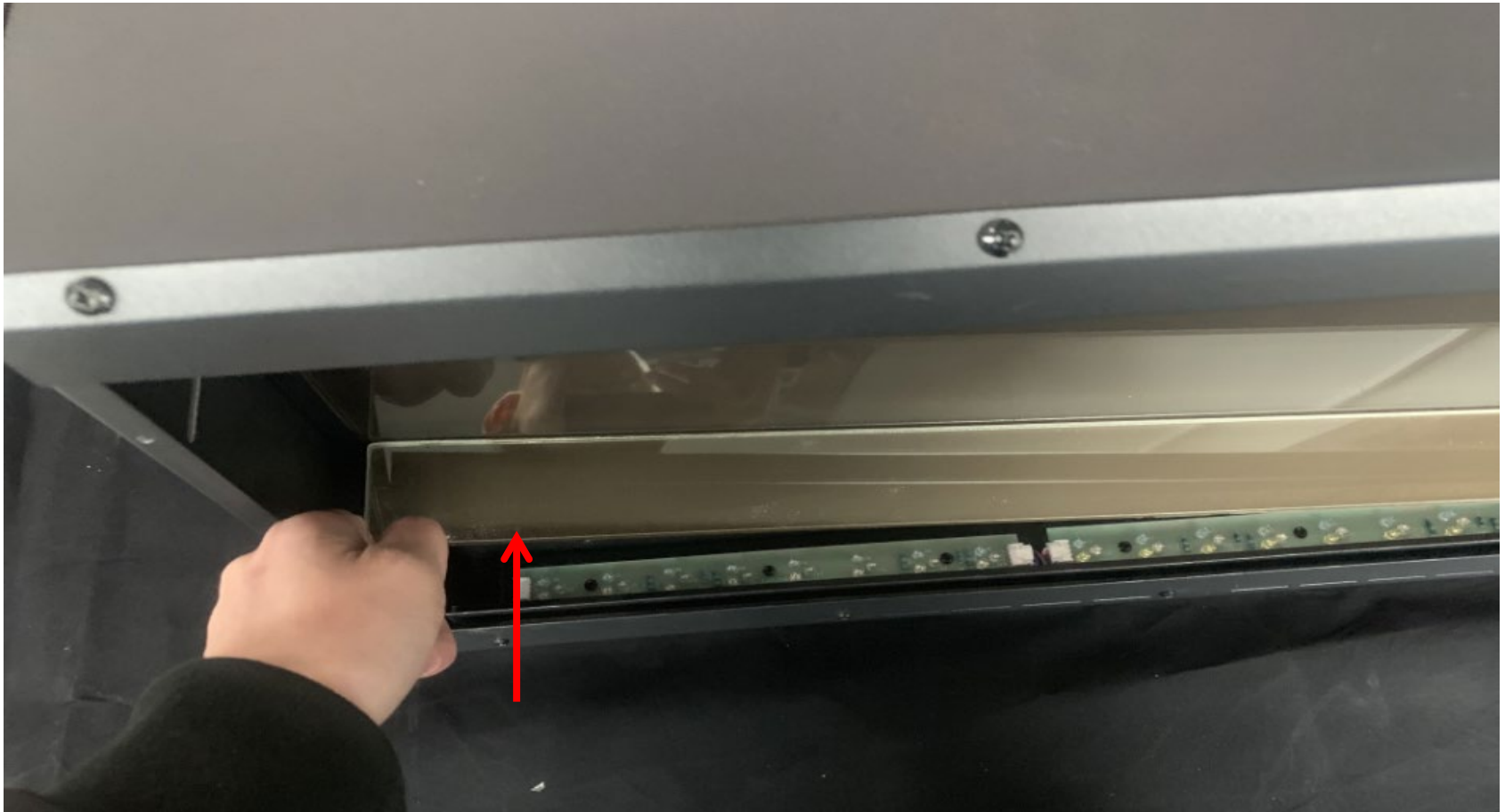
The side steel panels need to be removed. To remove the side panels, unscrew the 4 screws circled in red.



The steel panels

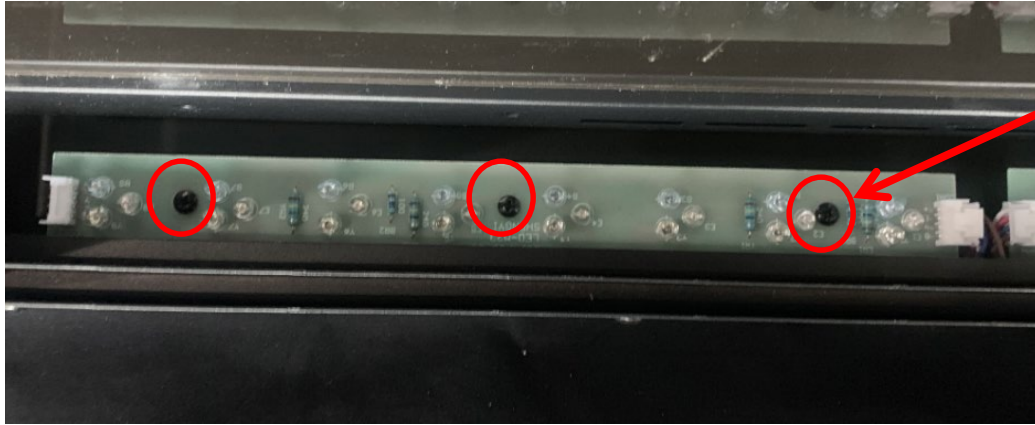
Step 4

After the steel panels have been removed, the ember bed glass panel can carefully be removed by rising one end up first and then out. The ember bed LED strips are located below it. Remember this is a piece of glass and can break if not handled with care.

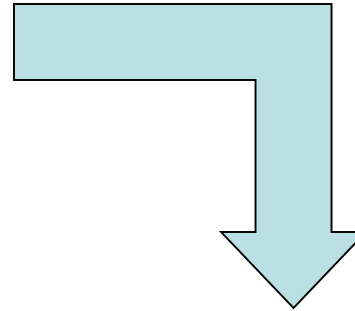


Step 5

The LED strips are held in place with screws and are connected to the other strips or to the end using a molex connector. Unscrew the screws of the failed LED strip and unplug the molex connector to replace it with a new one.



Unscrew

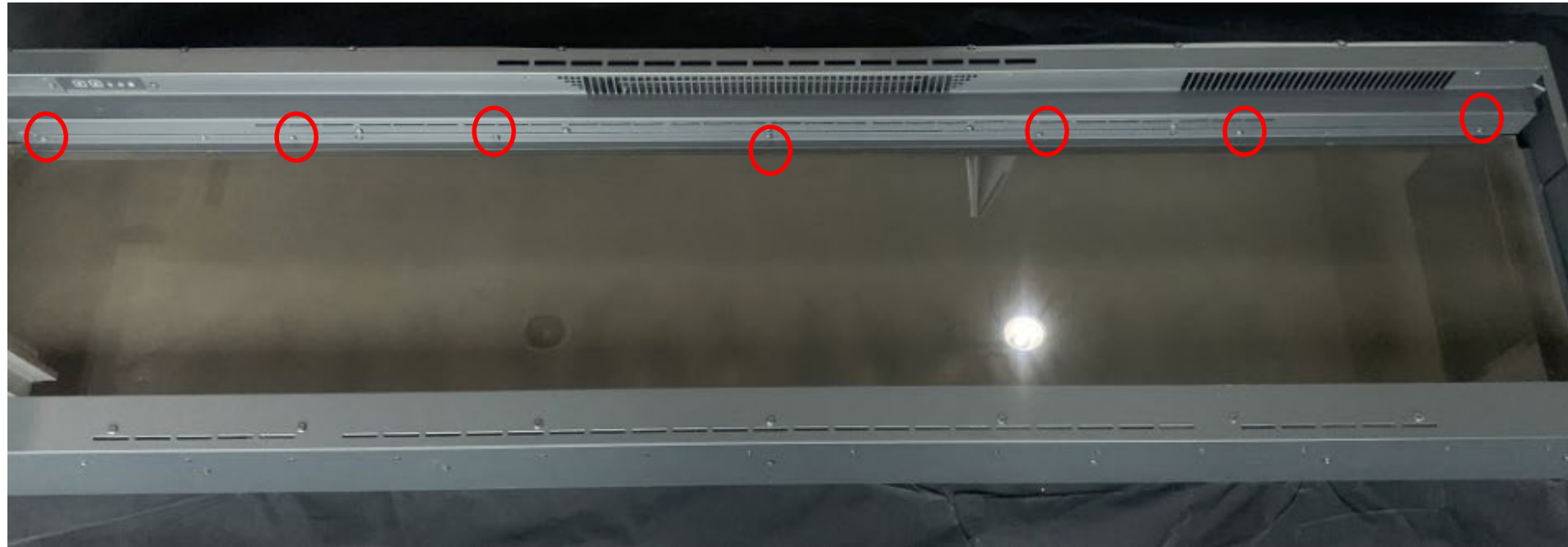


Unplug



Replace Flame LED light

Follow STEP 1 to 4 in Replace Ember Bed LED light



Step 1

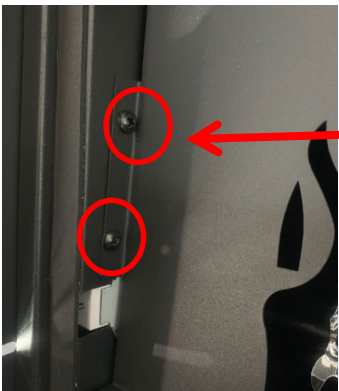
Remove the back glass to expose location of the flame LED. Unscrew the screws circled in red to remove the steel bar that secures the back glass. Remove steel bar and set aside. The back glass can now be removed and set aside.

Step 2

Remove flame effect steel panel. To remove the panel, remove the 2 screws shown circled in red on each side of the unit. Remove the panel and set aside.

Zoomed View

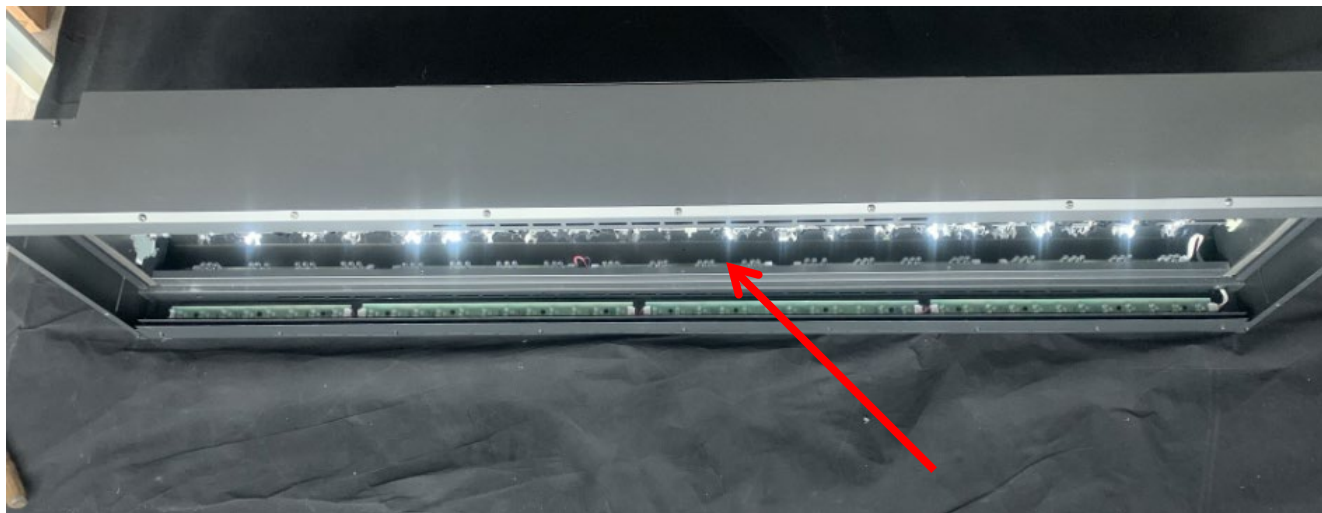
Zoomed View



Once the panel has been removed you have exposed the location of the Flame LED strip. They are set back from the Ember bed LED as seen below

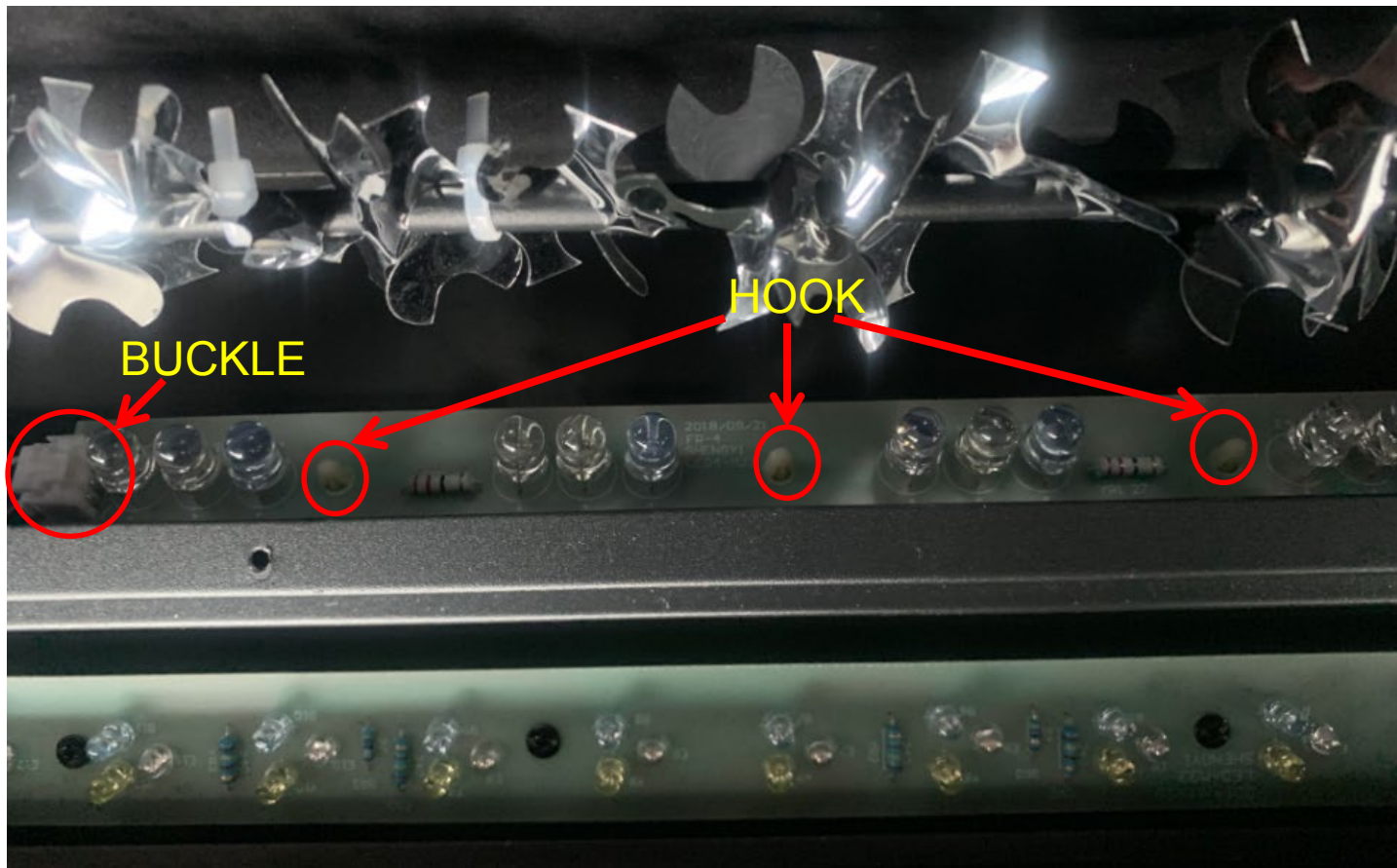


Horizontal view



Bird's eye view

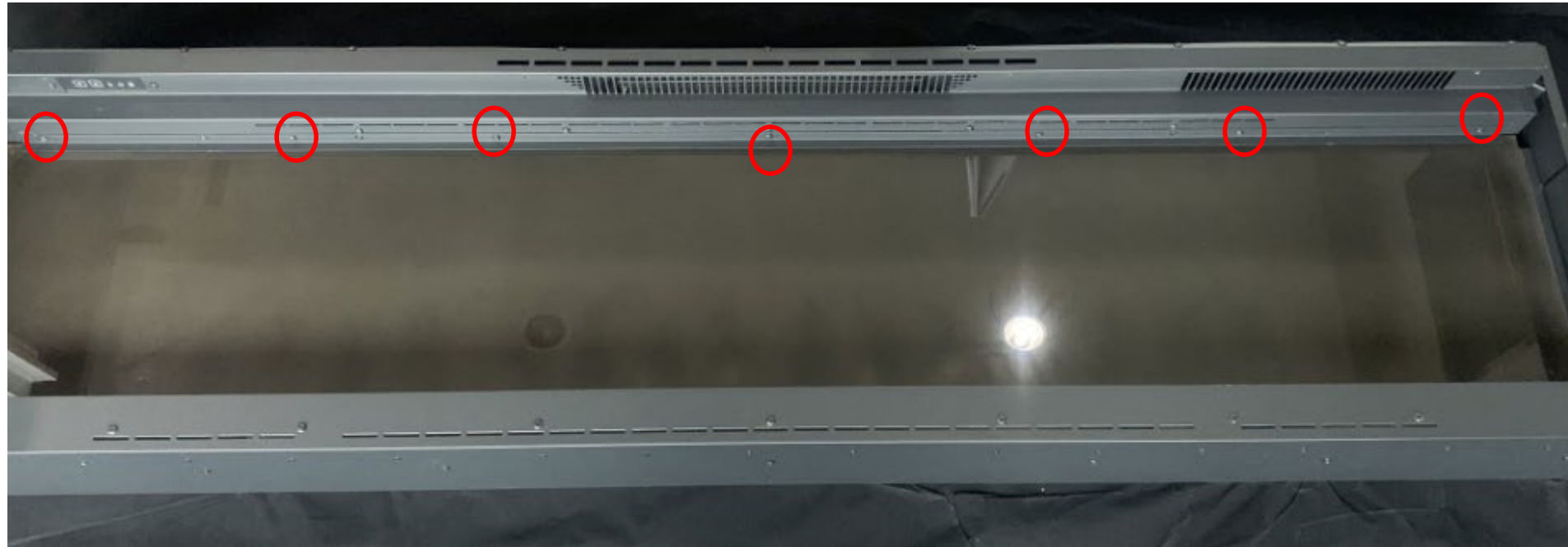
LED strips for flame effect lie here



Step 3 The Flame LED strip is connected using a molex connector and secured in place with plastic hooks. Disconnect the strip from the molex connector and carefully unsecure the hooks holding the strip in place. A new strip can now be installed by reconnecting to the molex connector and secured to the unit using the hooks.

Replace flicker motor

Follow STEP 1 to 4 in Replace Ember Bed LED light



Step 1

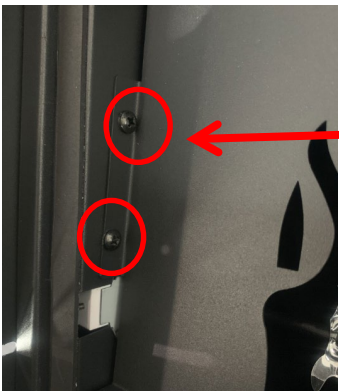
Remove the back glass to expose location of the Flicker motor. Unscrew the screws circled in red to remove the steel bar that secures the back glass. Remove steel bar and set aside. The back glass can now be removed and set aside.

Step 2

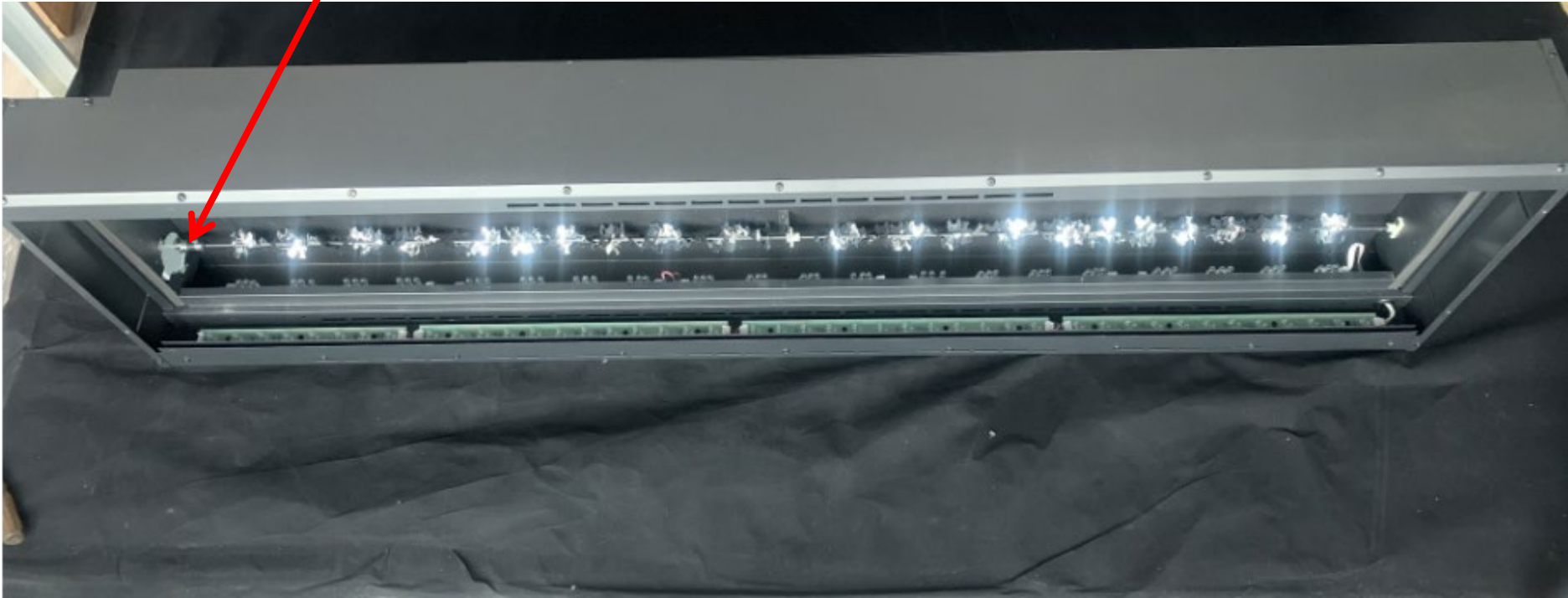
Remove flame effect steel panel. To remove the panel, remove the 2 screws shown circled in red on each side of the unit. Remove the panel and set aside.

Zoomed View

Zoomed View



Once the flame effect steel panel's been removed, you can locate the flame motor on the left side of the unit.



Steps to remove Flicker Motor

Step 1



Unscrew the clamp that secures the flicker rod onto the motor. Remove the rod by carefully pulling it off of the motor

Step 2



Unscrew the 2 screws circled in red to remove the motor from the fireplace.

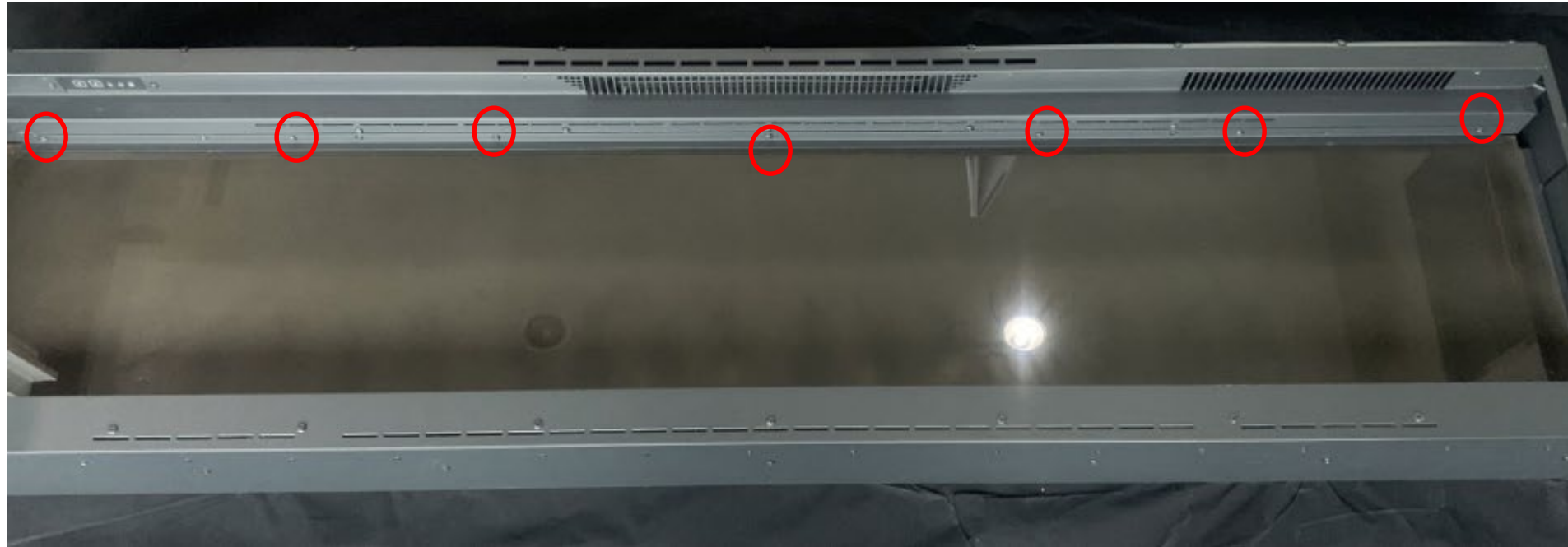
Step 3



The motor is connected using spade connectors. Carefully disconnect the motor and replace

Replace the heating element

Follow STEP 1 to 4 in Replace Ember Bed LED light.



Step 1

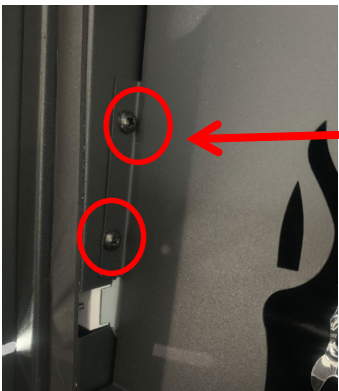
Remove the back glass to expose the flame effect steel panel. Unscrew the screws circled in red to remove the steel bar that secures the back glass. Remove steel bar and set aside. The back glass can now be removed and set aside.

Step 2

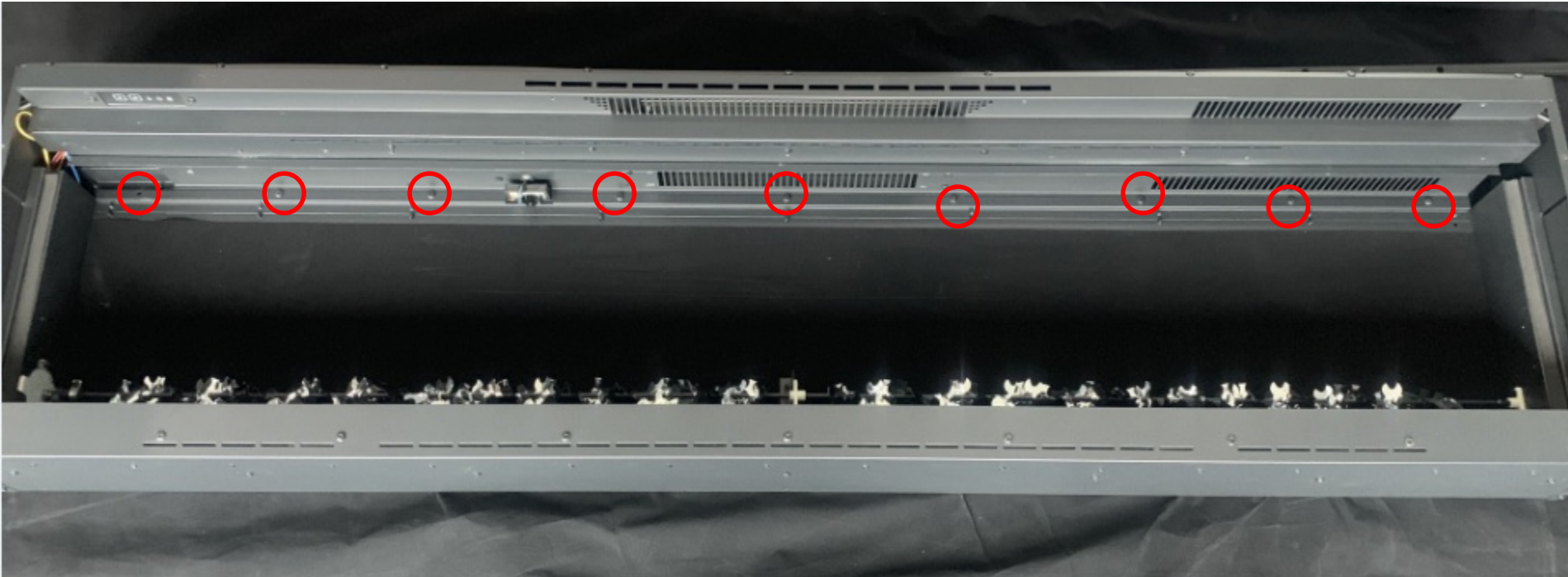
Remove flame effect steel panel. To remove the panel, remove the 2 screws shown circled in red on each side of the unit. Remove the panel and set aside.

Zoomed View

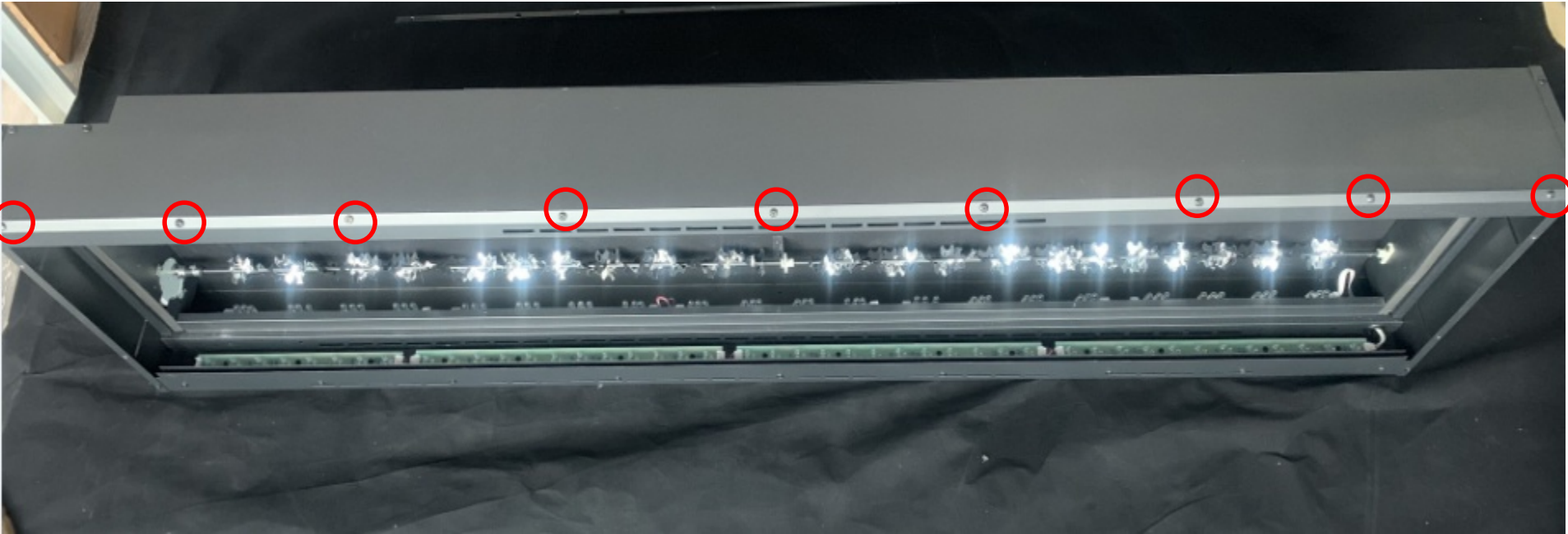
Zoomed View

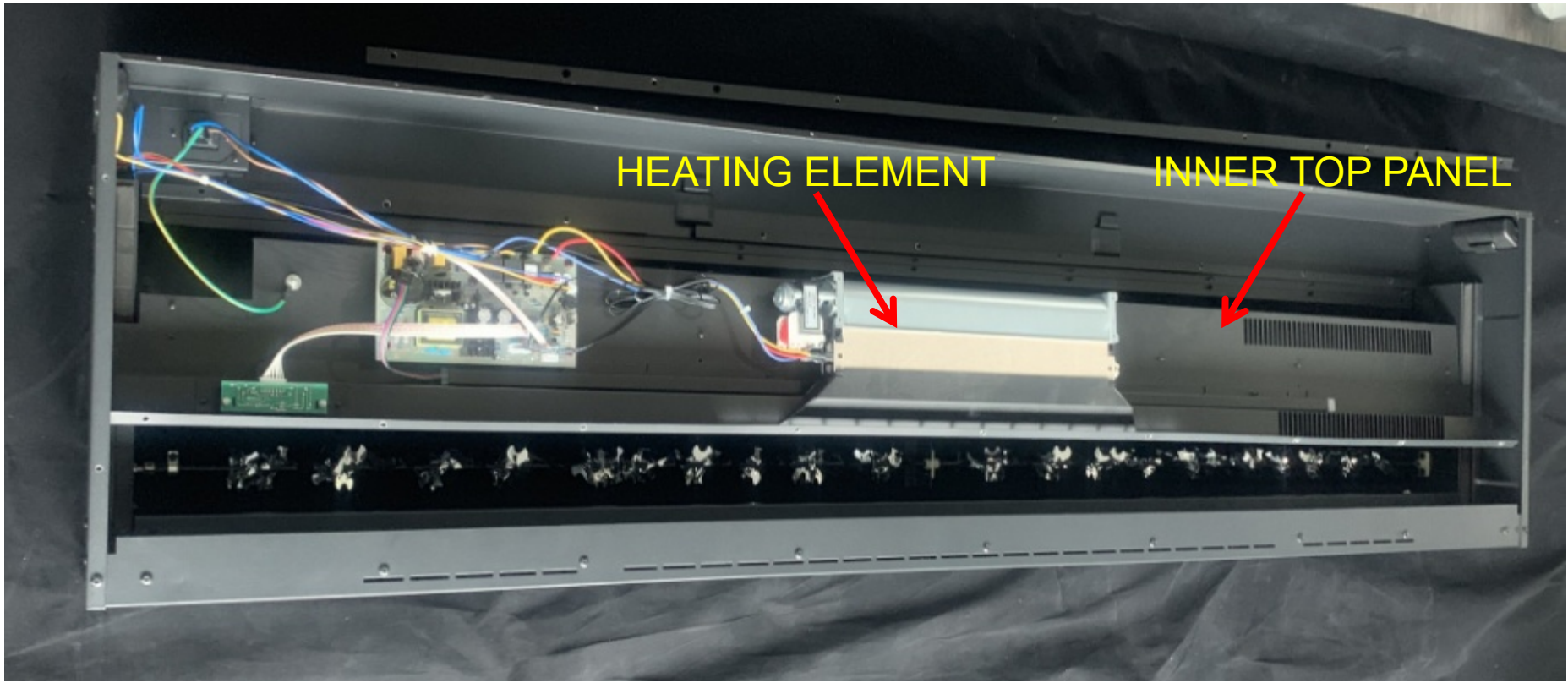


Step 3 Remove the screws circled in red located at the top rear of the inner firebox



Step 4 Remove inner top panel. Remove the screws circled in red to take off the inner top panel. The heating element, PCB board, Canopy light and Signal receiver are all fixed on it.

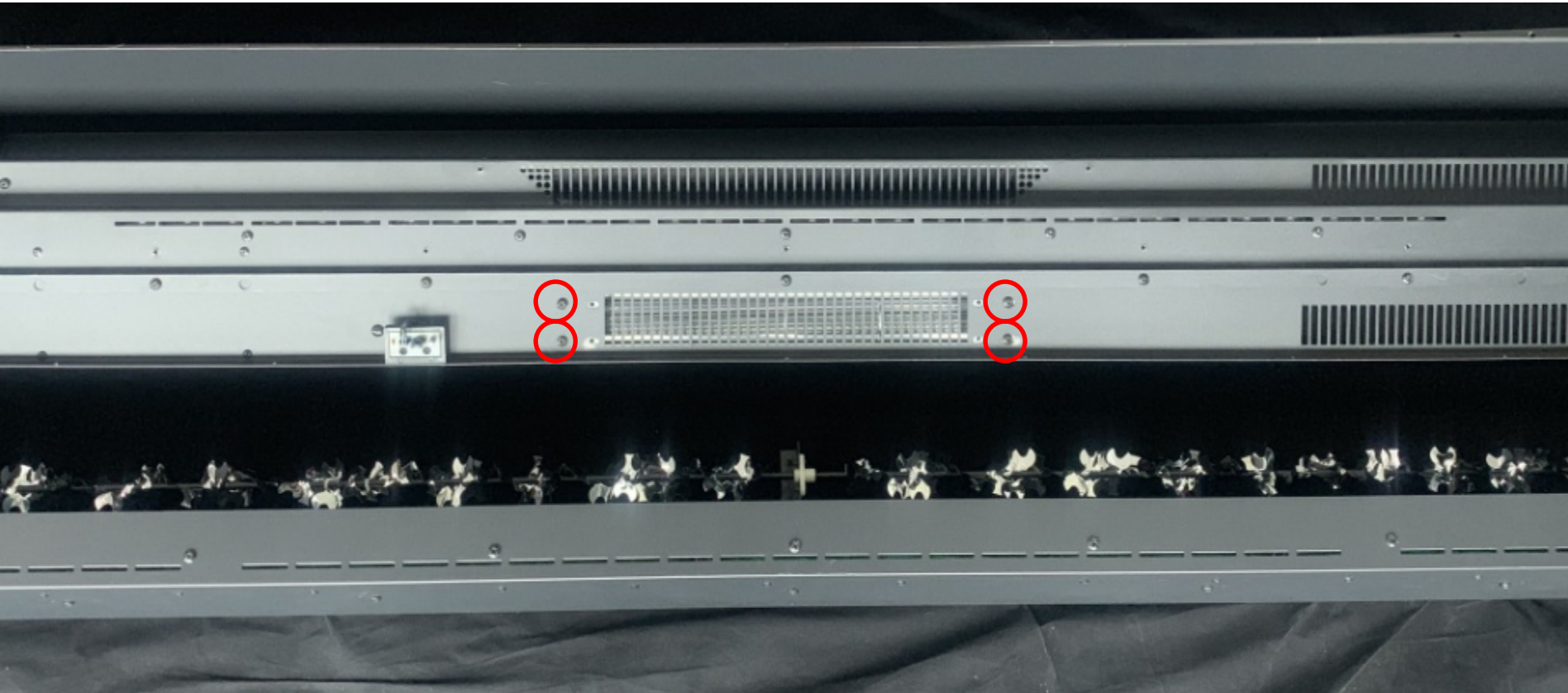




HEATING ELEMENT

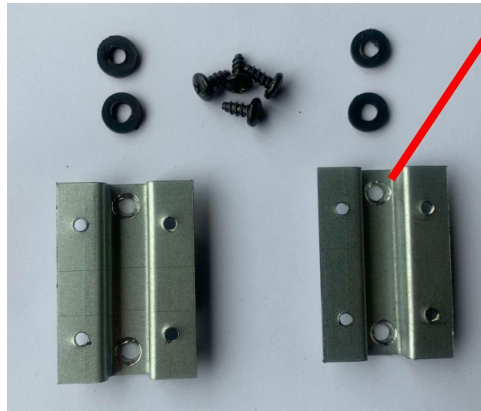
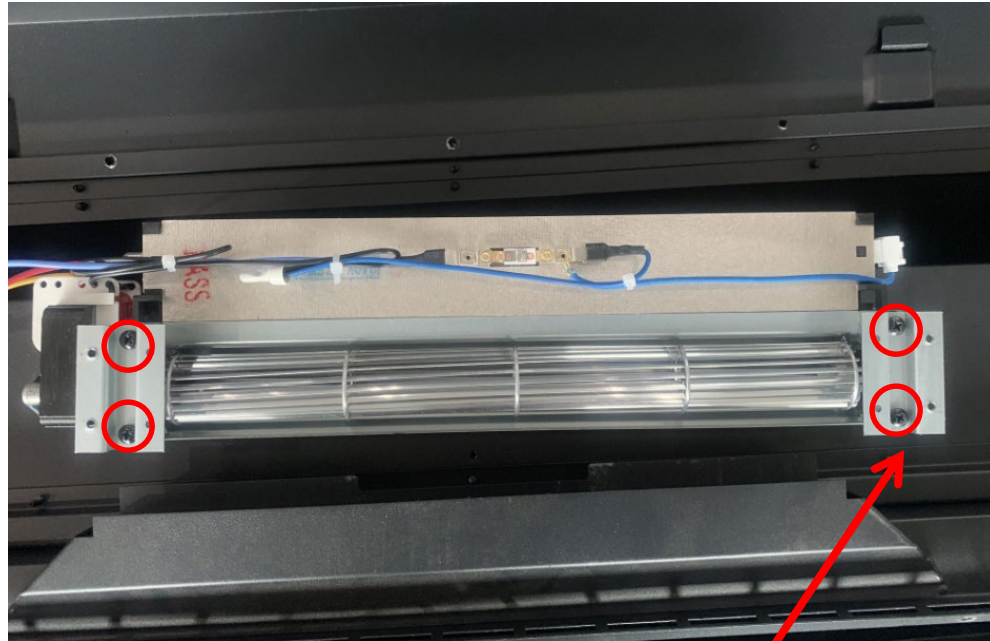
INNER TOP PANEL

Step 5 To replace the element, remove the screws circled in red that secures the heating element assembly from to the inner top panel and carefully remove the heater.



Step 6

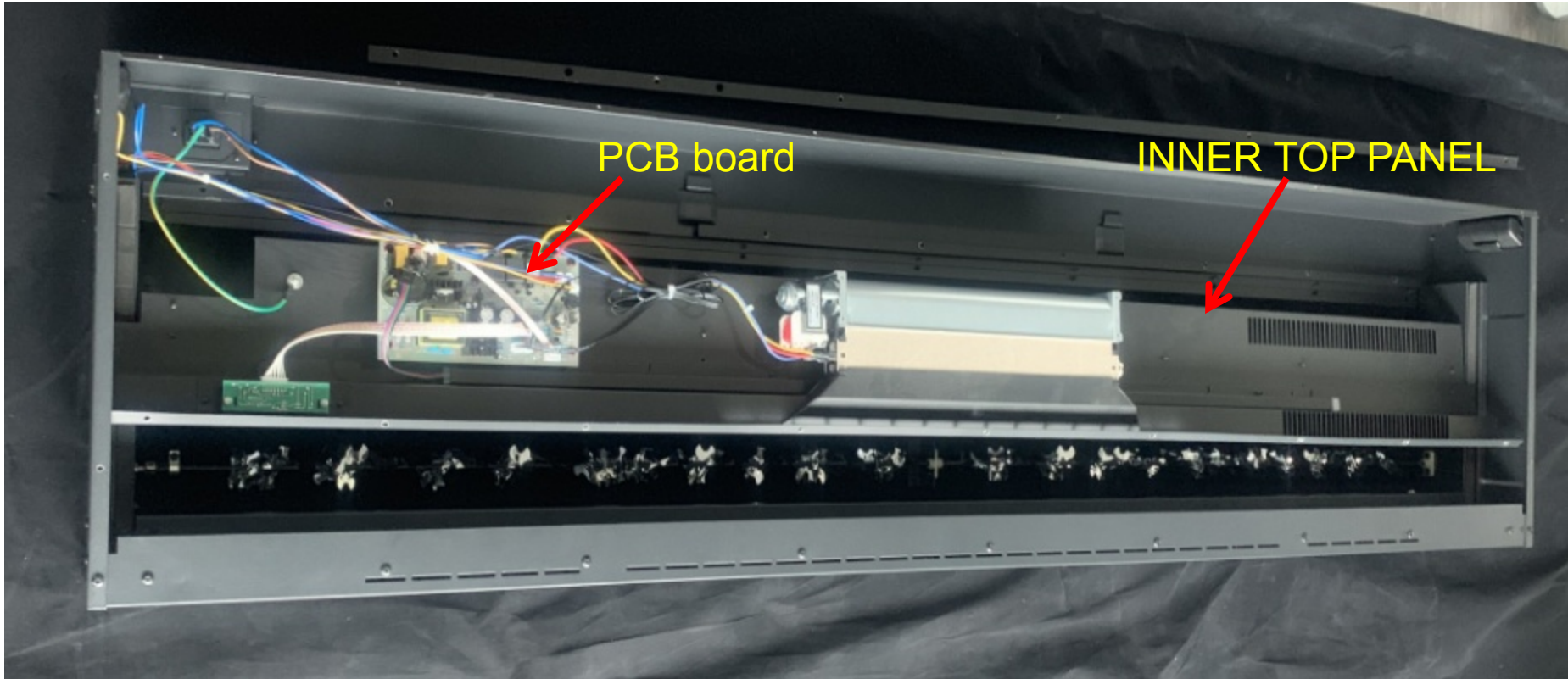
Remove heater brackets from the heater by removing the screws circled in red. Unplug the heater and replace it with a new heater.



NOTE: When removing the heater, take note of how it was removed. The rubber spacers need reinstalled the same way that they were removed

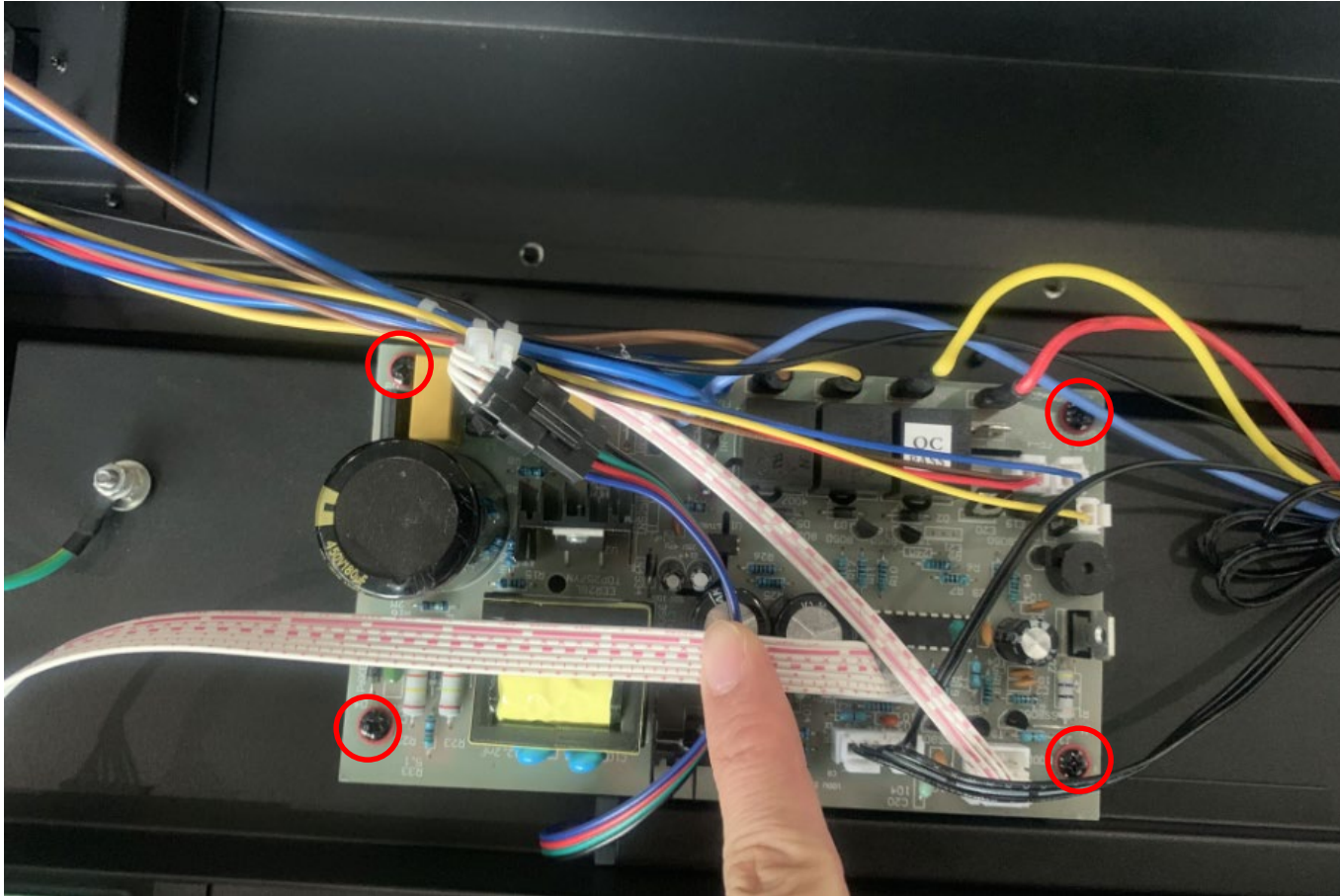
Replace the PCB board

Follow STEP 1 to 4 in Replace the heating element.



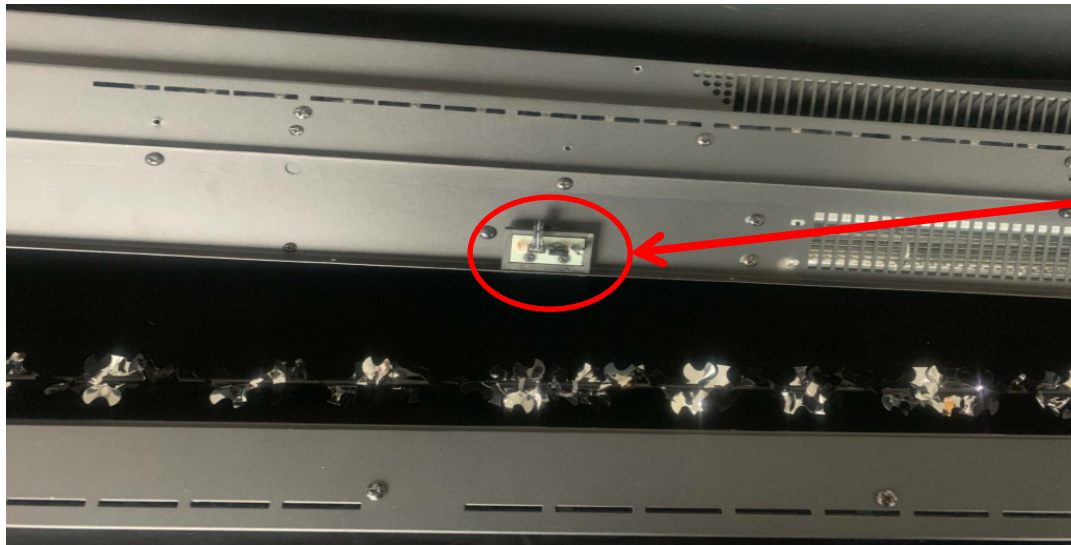
Step 1

Remove the 4 screws circled in red and replace the failed PCB board with a new one. Secure the new board to the inner top using the same 4 screws used to remove the board



Replace the signal receiver

Follow STEP 1 to 4 in Replace the heating element to take off the inner top panel.

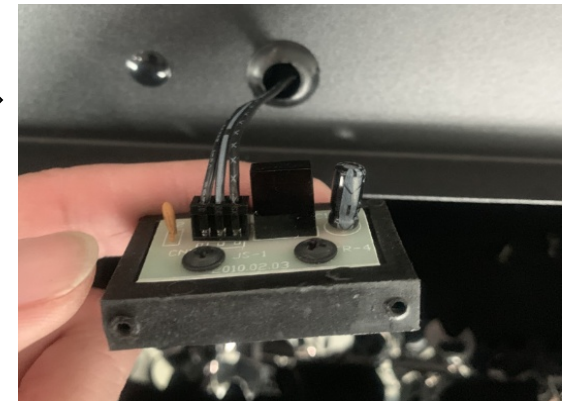
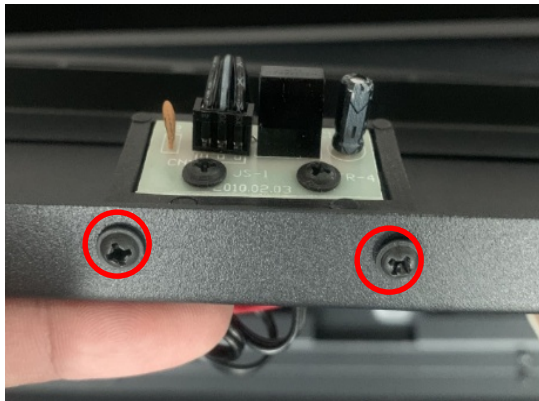


The signal receiver lies here

Step 1



Remove the 2 screws circled in red to take the signal receiver off the inner top panel.



Step 2

The receiver is connected to the PCB board using a molex connector. Follow the lead from the receiver back to the board and disconnect it from the PCB board. A new receiver can be connected to the PCB board then secured to the inner top of unit.

