

LOG PLACEMENT GUIDE FOR THE STANFORD

DESIGN-MEDIA-14PCE



1. Rear Log Left
2. Rear Log Right
3. Left Top Cross Log
4. Middle Top Cross Log
5. Right Middle Bottom Log
6. Left Front Bottom Log
7. Far Right Bottom Log
8. Far Right Top Cross Log
9. Far Left Top Log
10. Optional Far Right Front Log
11. Optional Middle Front Bottom Log
12. Optional Middle Front Top Log

Before you begin:

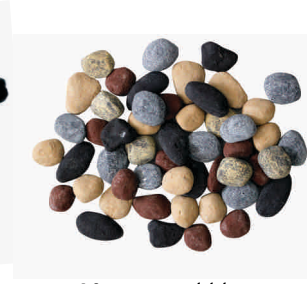
Read the instructions carefully and refer to the images. Do not use broken logs.

You will find there are more log set pieces in the box than can be used. Every precaution has been taken to ensure the log sets are not damaged in transit – but in the event that there is some breakage there will be extra pieces to use in their place.

WARNING: Improper positioning of the logs may create carbon build-up and can alter the units performance which is not covered under warranty.



Black fire glass



90-piece pebble

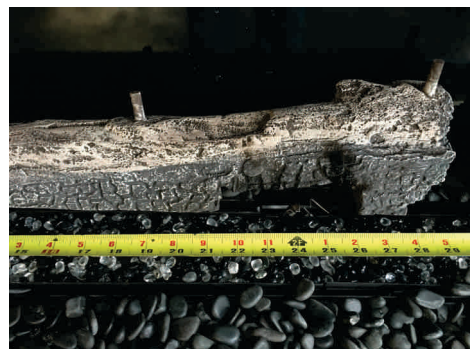


9-piece rocks

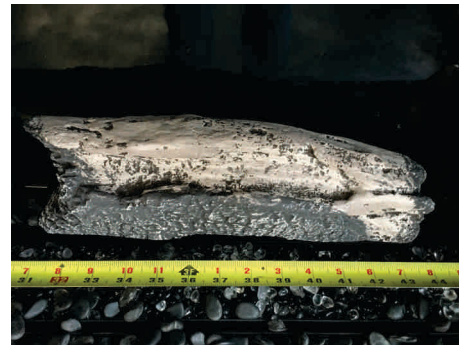
1. Shut off gas and electrical supply and allow the unit to cool to room temperature.
2. Remove glass and safety barrier
3. Carefully open Designer Media Kit box and gently remove the logs and media. The logs are fragile.



4. Add the desired amount of black fireglass and/or pebble decorative media to the burner tray.

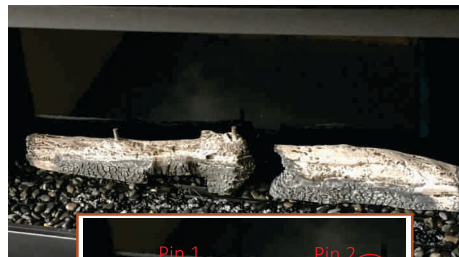


5. Install Rear Log Left (1) by positioning cut out over pilot. Ensure cut out is centered as shown.



6. Install Rear Log Right (2) to the right of Log 1 as shown.

Note: The pilot between the two logs.



Rear logs 1 and 2 in place. Note Pins 1 and 2.



7. Line up top hole in Left Top Cross Log (3) to Pin 1 on Left Rear Log as shown.



Install Tip:

Locate and use provided log placement template for the Stanford.

LOG PLACEMENT GUIDE FOR THE STANFORD



Log 3 pinned in place.



8. Line up top hole in Middle Top Cross Log (4) to Pin 2 on Left Rear Log as shown.



Log 4 pinned in place.



9. Place Right Middle Bottom log (5) under Log 4 as shown. Note: This log placement is important in order to raise log 4 up crossing the flame in order to reduce risk of soot.



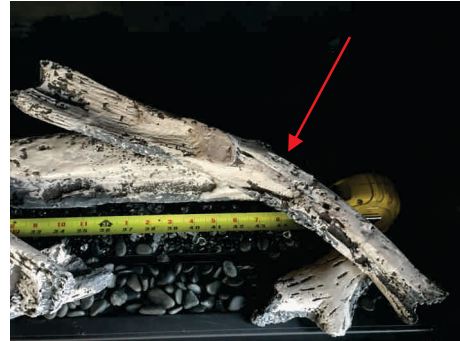
Log 5 placed under Log 4.



10. Place Left Front Bottom Log (6) under Log 3. Note: This log placement is important in order to raise log 3 up crossing the flame in order to reduce risk of soot.



11. Place Far Right Bottom Log (7) as shown taking care to make sure it is not crossing the flame path.



12. Place Far Right Top Cross log (8) as shown on top of logs 2 and 7. Note: This log placement is important in order to raise log 4 up crossing the flame in order to reduce risk of soot.



13. Place Far Left Top Log (9) on top of log 3 positioned towards back of unit as shown.



14. If desired, place optional front logs 10, 11, 12 as shown.



LOG PLACEMENT GUIDE FOR THE STANFORD



embers 1



embers 2

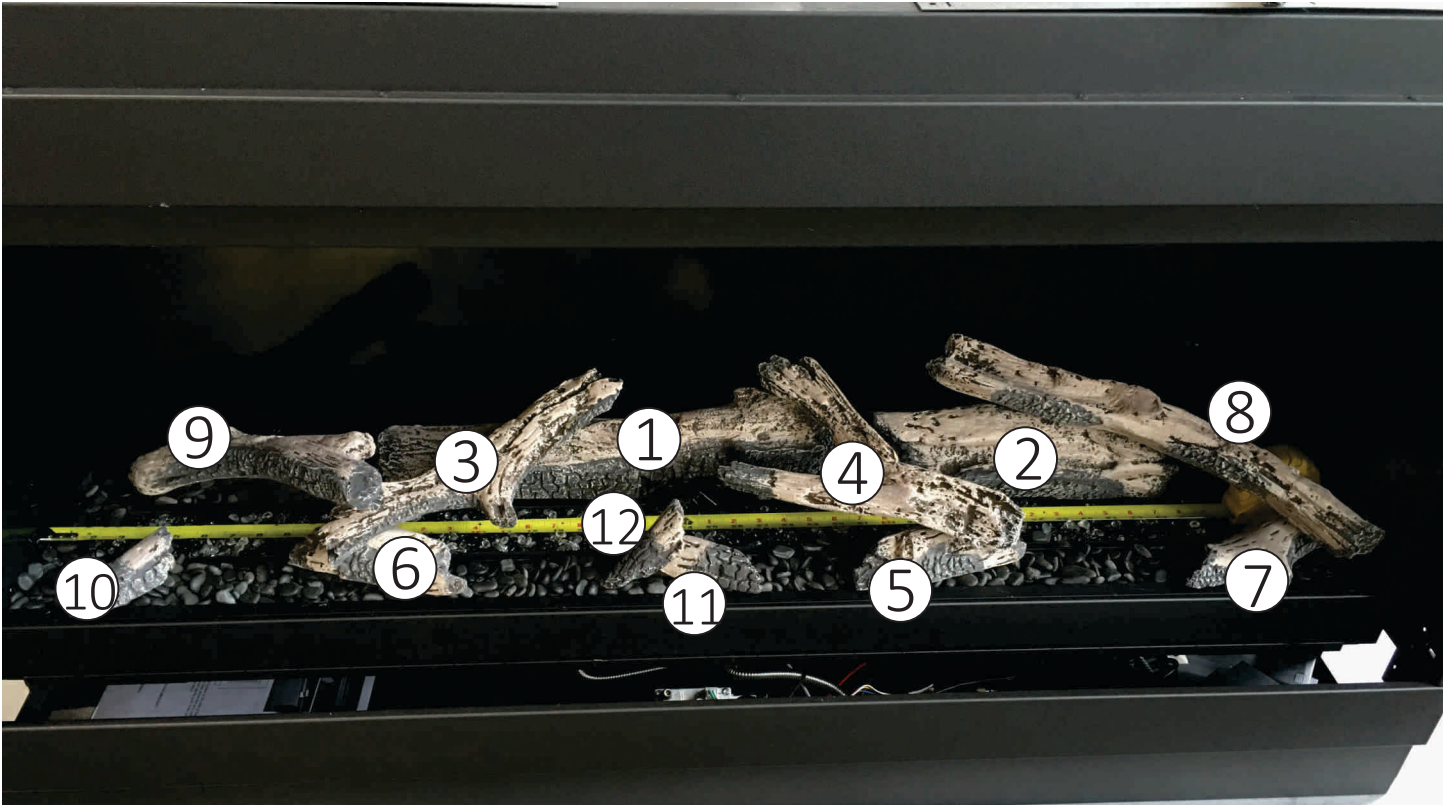


embers 3



embers 4

17. Install decorative vermiculate embers over glass and pebbles as desired.



Completed installation shown with 12 logs.