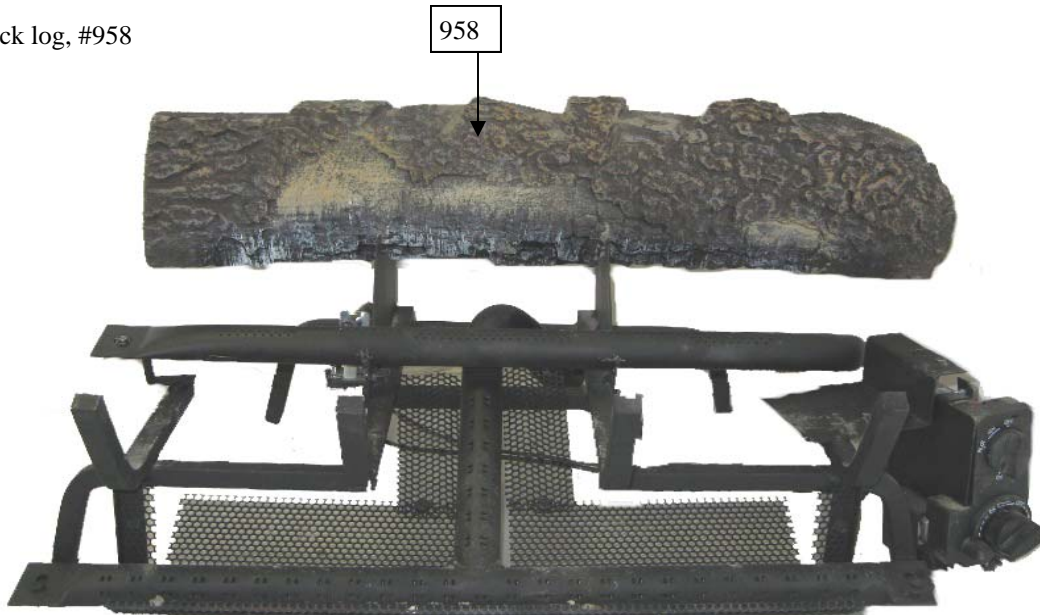


SELECT OAK 24" LOG PLACEMENT

FOR BEST RESULTS WE RECOMMEND THAT YOU PLACE YOUR GLOWING EMBERS ON THE BURNER BEFORE SETTING UP YOUR LOG SET. SEE THE INSTRUCTION MANUAL THAT WAS SUPPLIED WITH THE BURNER HEARTH KIT.

STEP 1
Place back log, #958



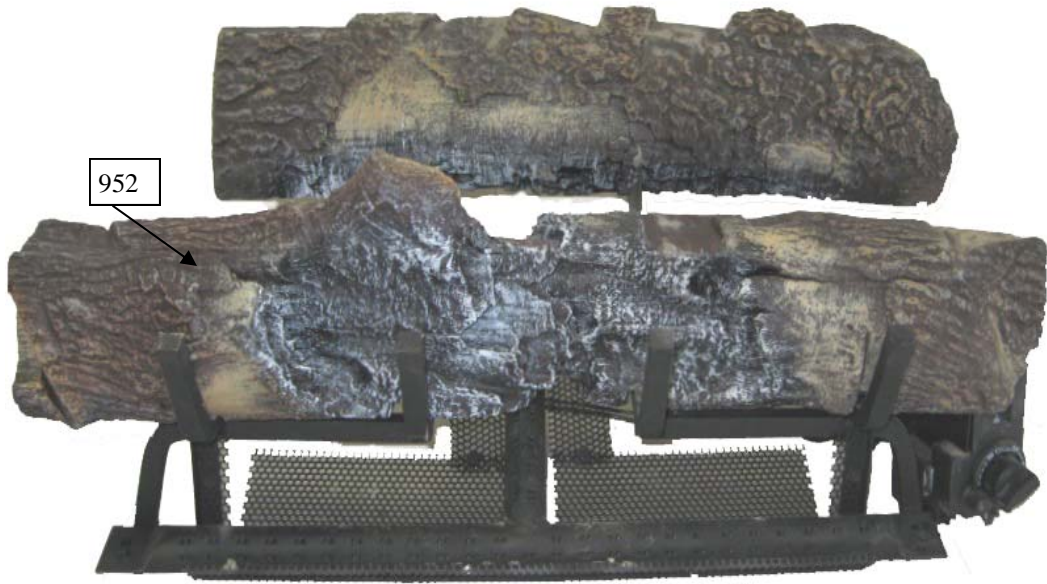
STEP 2
Place right front log, #953



SELECT OAK 24" LOG PLACEMENT

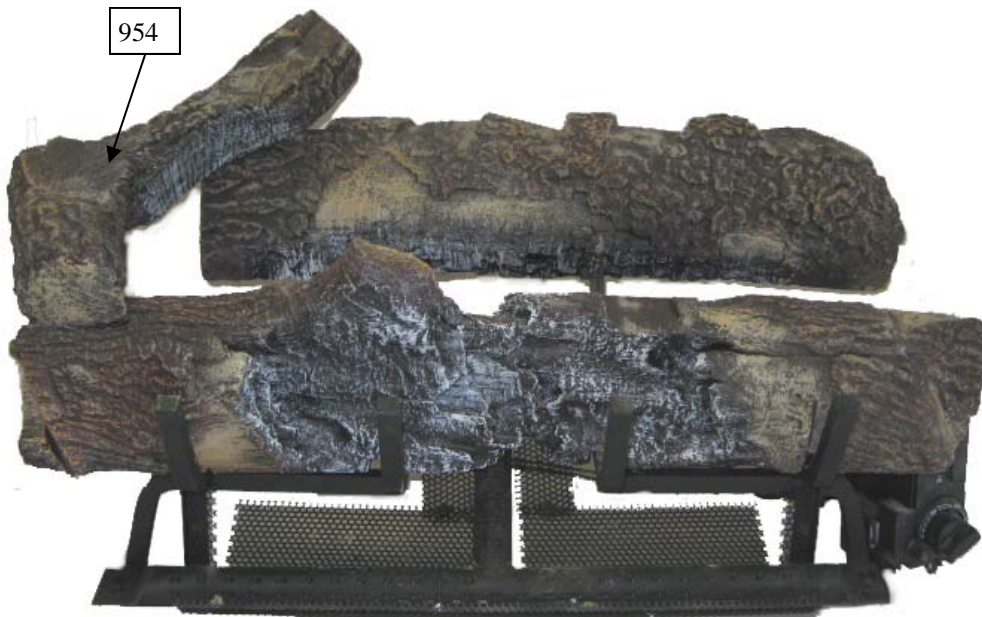
STEP 3

Place left front log, #952



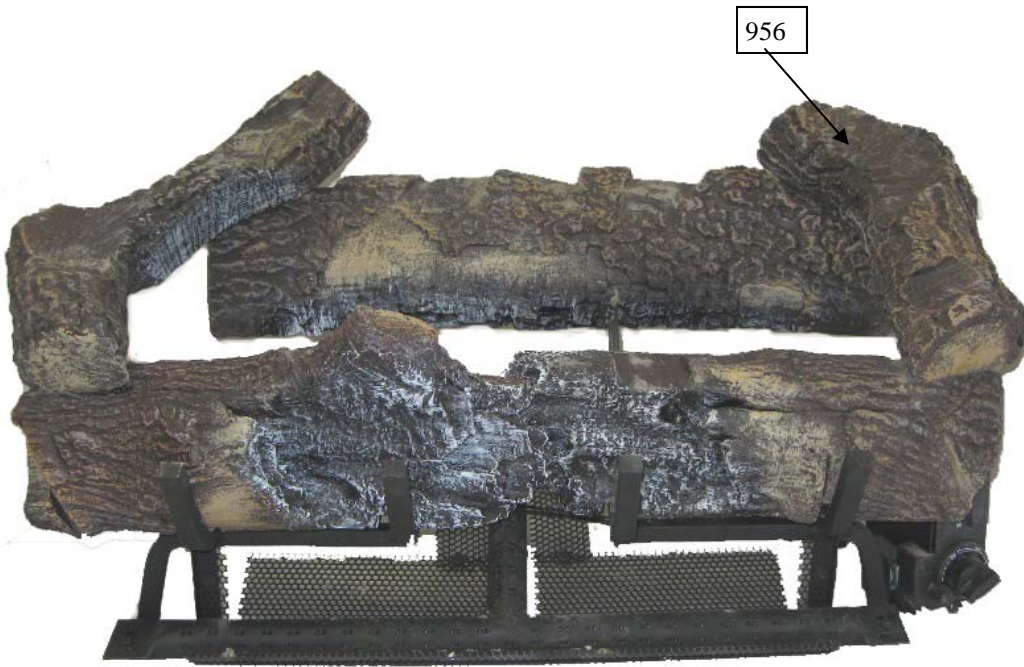
STEP 4

Place log, # 954

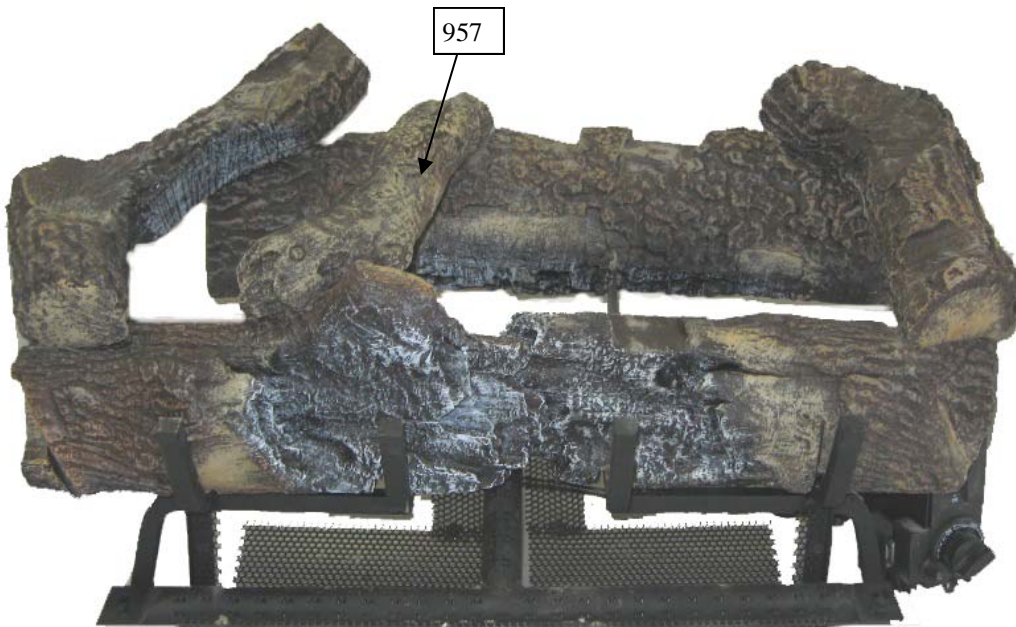


SELECT OAK 24" LOG PLACEMENT

STEP 5
Place log, # 956



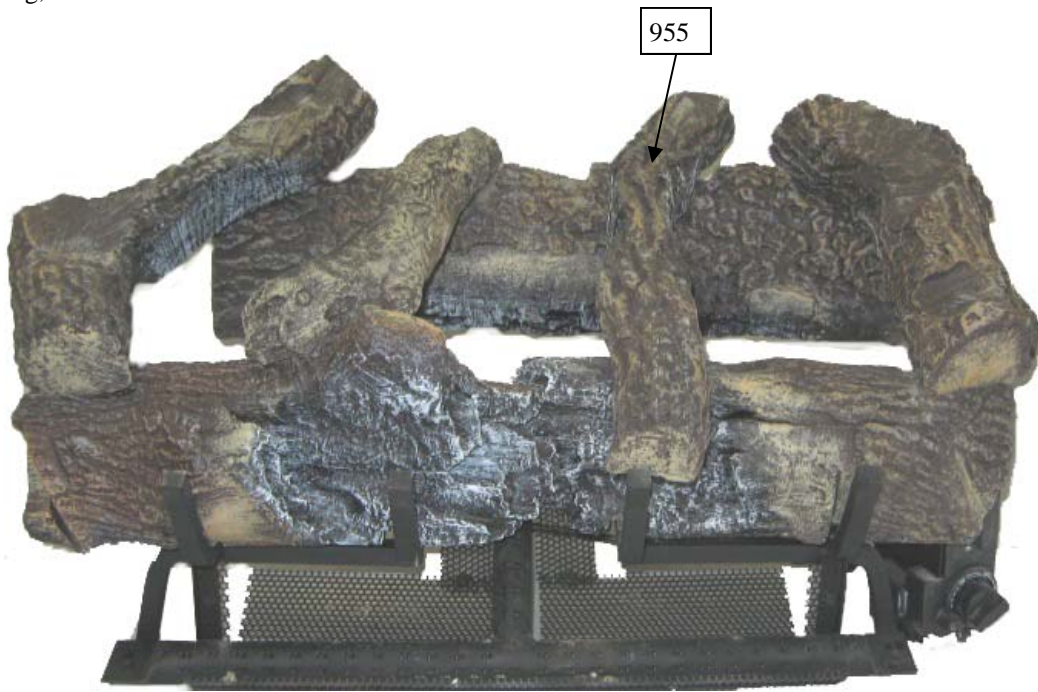
STEP 6
Place log, # 957



SELECT OAK 24" LOG PLACEMENT

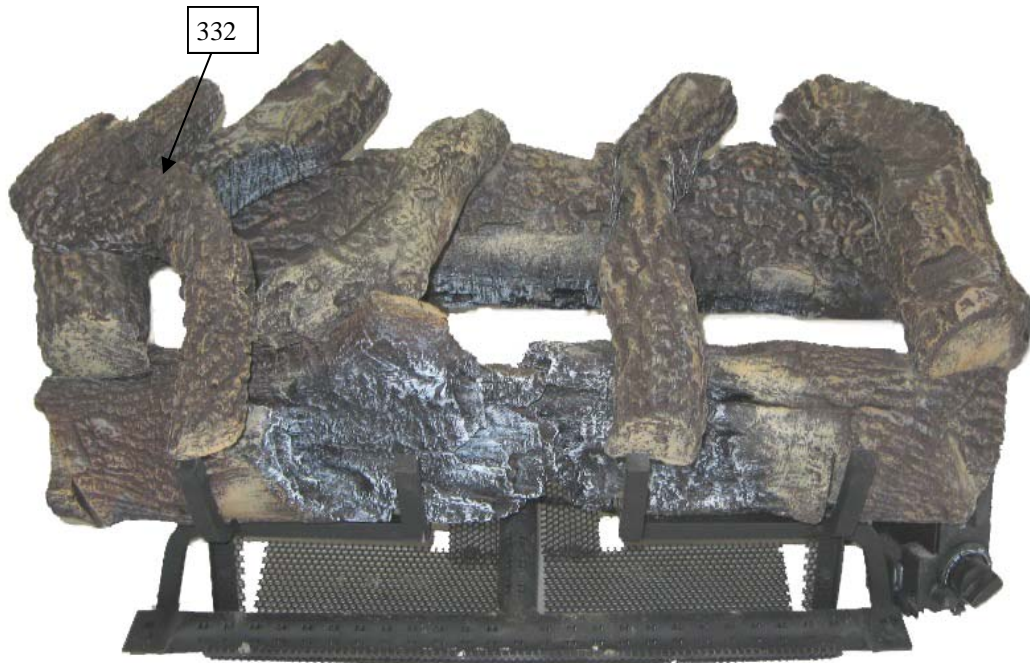
STEP 7

Place log, # 955



STEP 8

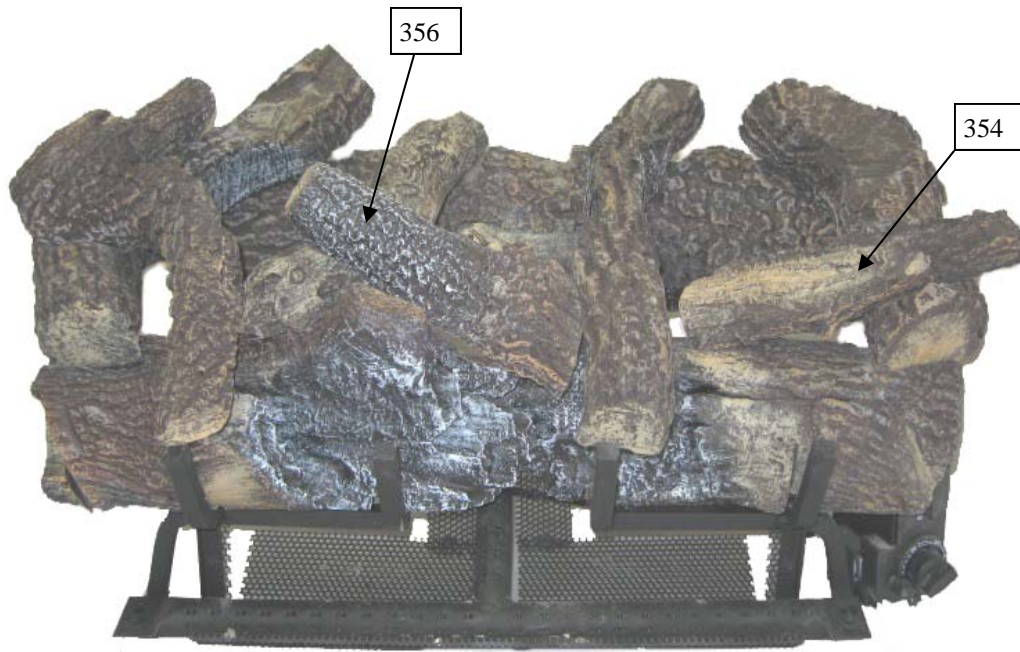
Place log, # 332



SELECT OAK 24" LOG PLACEMENT

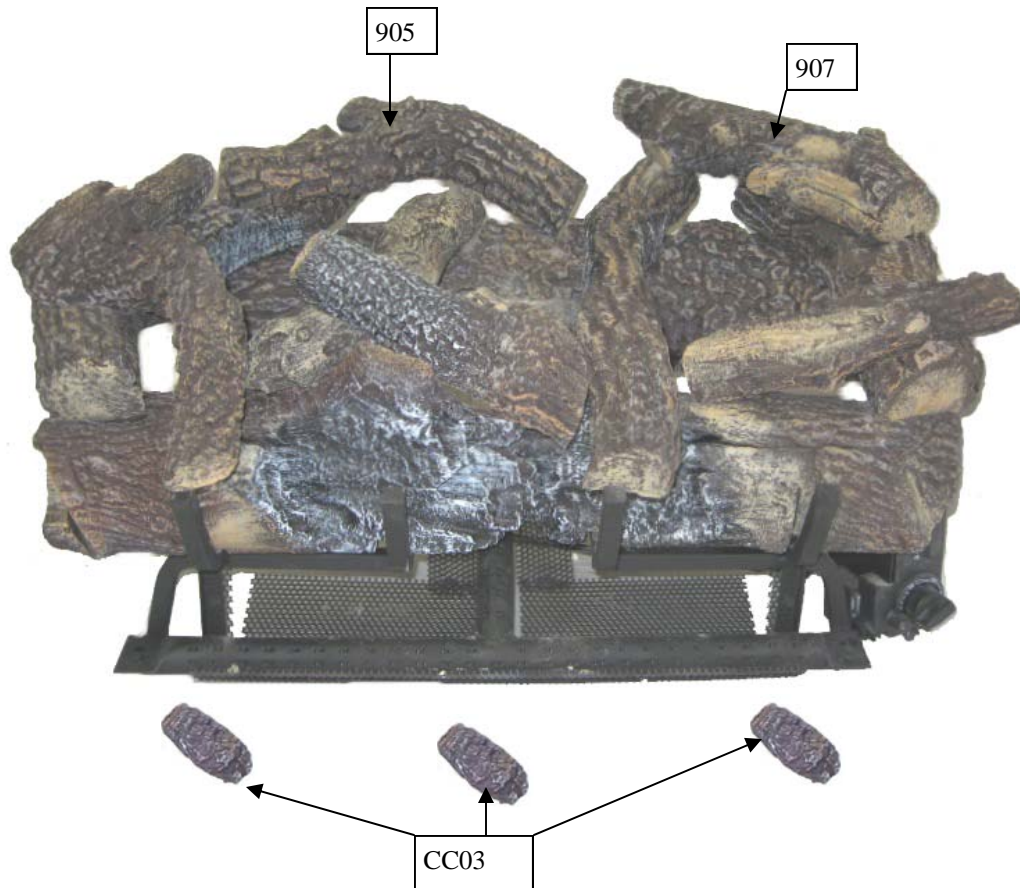
STEP 9

Place logs, # 356 & 354



STEP 10

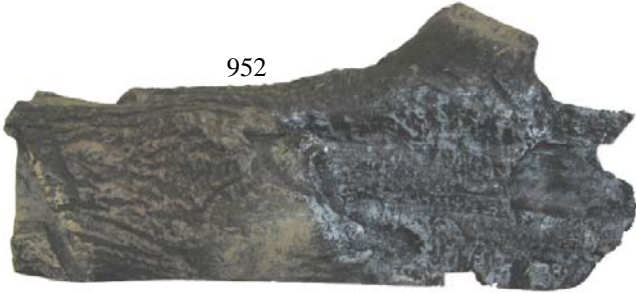
Place logs, # 905, 907 & 3- CC03



SELECT OAK 24" LOG PLACEMENT



958



952



953



954



955



907



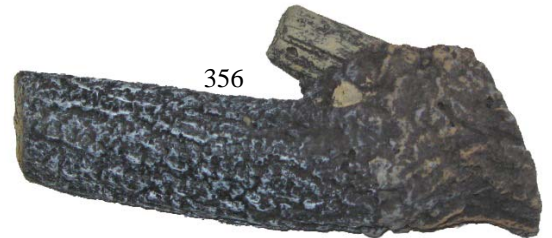
956



332



957



356



CC03 X 3



905

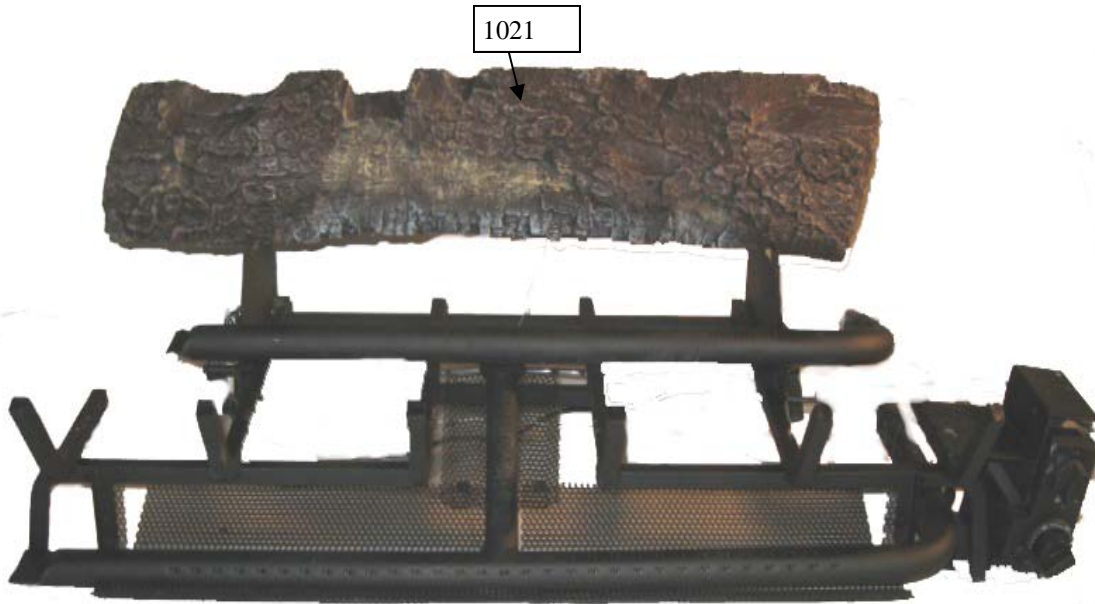


354

SELECT OAK 30" LOG PLACEMENT

FOR BEST RESULTS WE RECOMMEND THAT YOU PLACE YOUR GLOWING EMBERS ON THE BURNER BEFORE SETTING UP YOUR LOG SET. SEE THE INSTRUCTION MANUAL THAT WAS SUPPLIED WITH THE BURNER HEARTH KIT.

STEP 1
PLACE BACK LOG #1021



STEP 2
PLACE LOGS: 1017 (Left Front) & 1018 (Right Front)

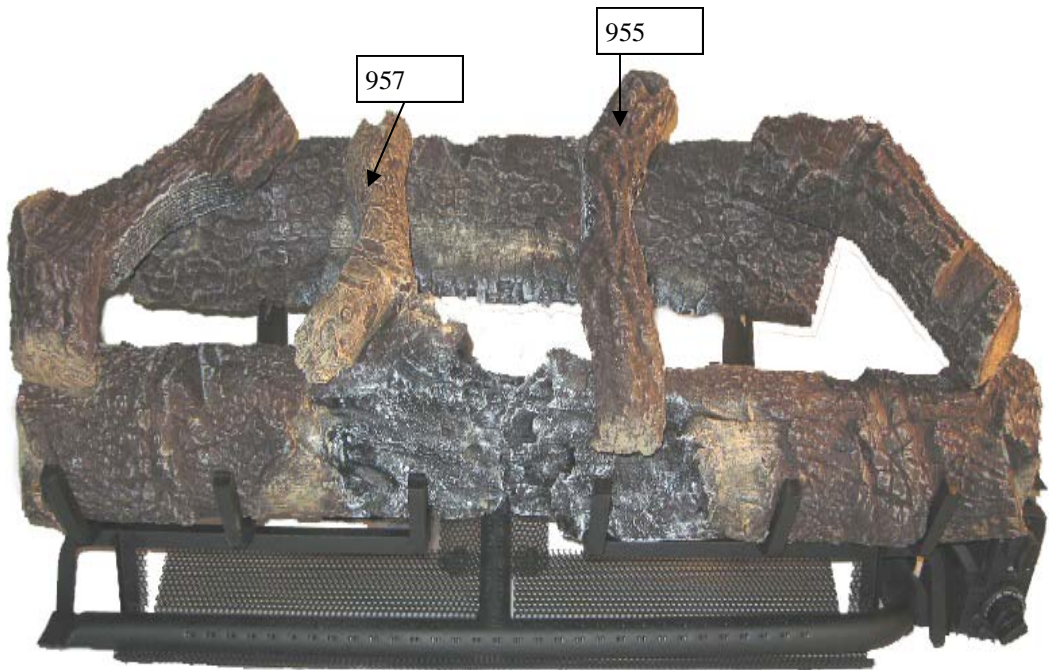


SELECT OAK 30" LOG PLACEMENT

STEP 3
PLACE LOGS: 954 & 1020



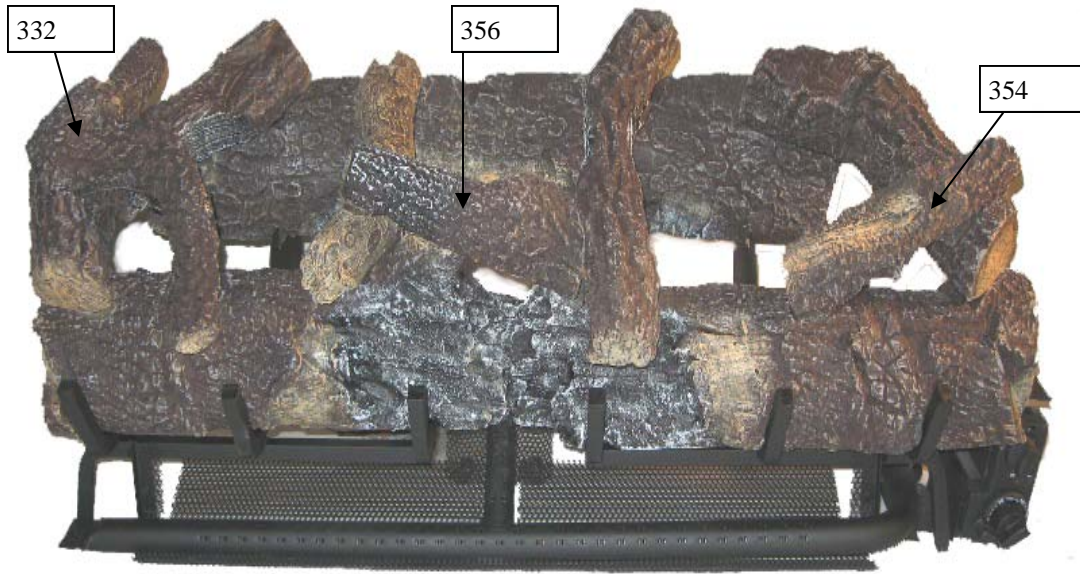
STEP 4
PLACE LOGS: 957 & 955



SELECT OAK 30" LOG PLACEMENT

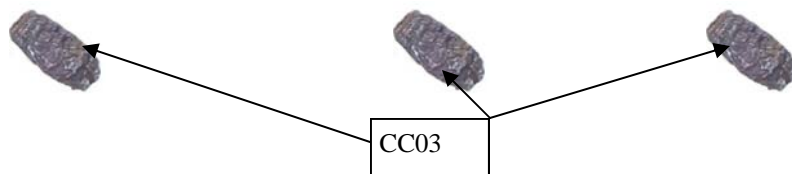
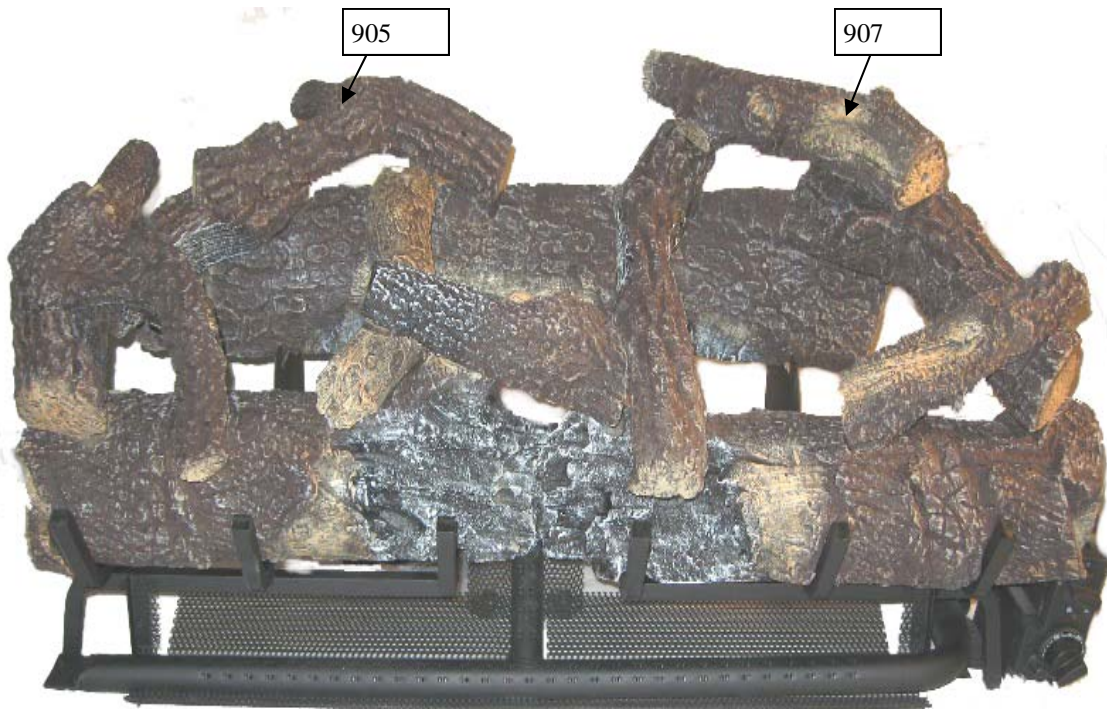
STEP 5

PLACE LOGS: 332, 356 & 354



STEP 5

PLACE LOGS: 905, 907 & 3-CC03



SELECT OAK 30" INDIVIDUAL LOGS

1021



1017



1018



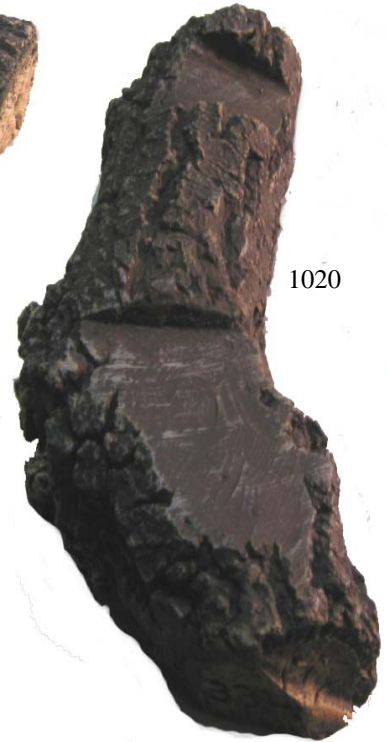
954



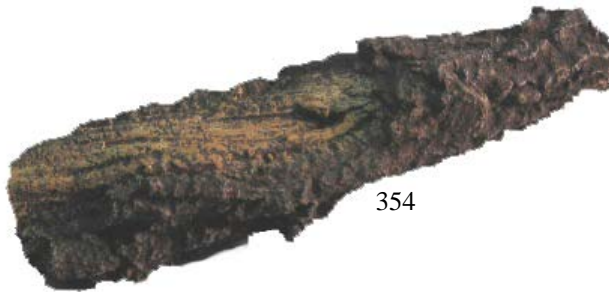
907



1020



354



332



356



CC03 X 3



957



905

