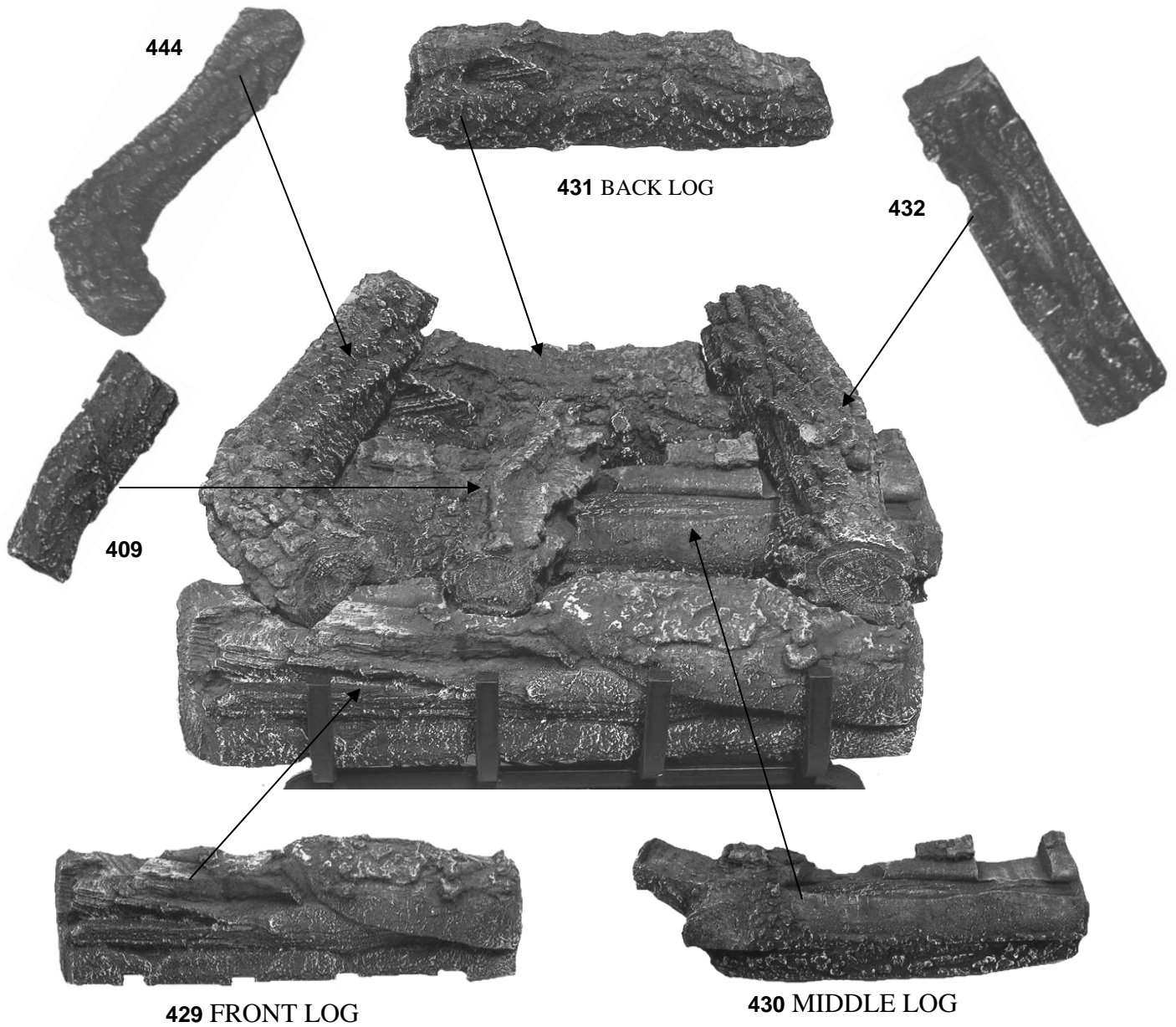


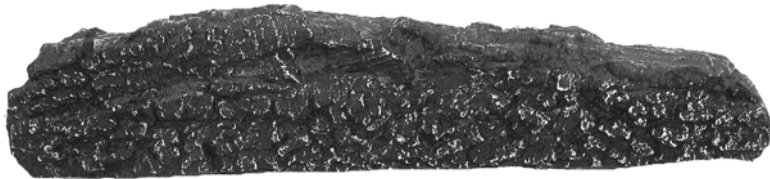
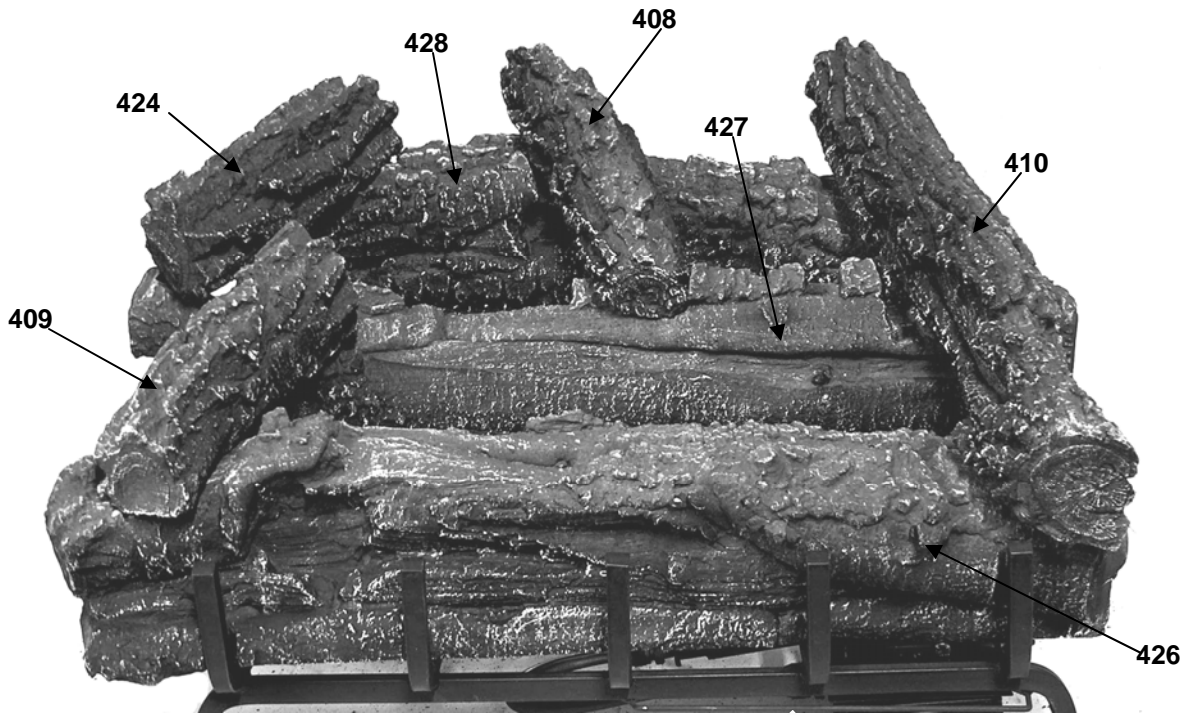
Regular Oak 18" Log Part Numbers:



WARNING: It is imperative that the flame does not come into contact with the logs. Some adjustment with the logs in the notches may be required in order to ensure that there is no impingement. It is the installers' responsibility to ensure proper log placement and adjustment.

WARNING: Failure to position the parts in accordance with these diagrams or failure to use only parts specifically approved with this appliance will result in property damage or personal injury.

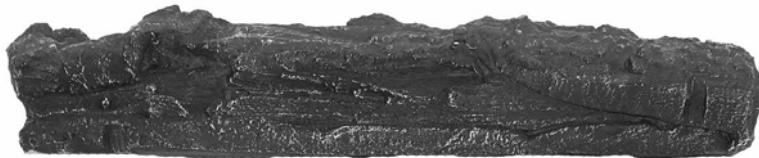
Regular Oak 24" Log Part Numbers



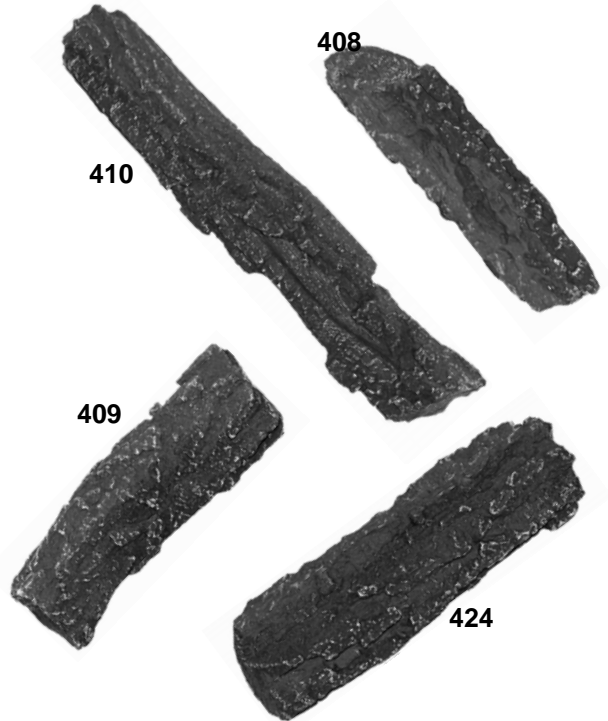
428 BACK LOG



427 MIDDLE LOG



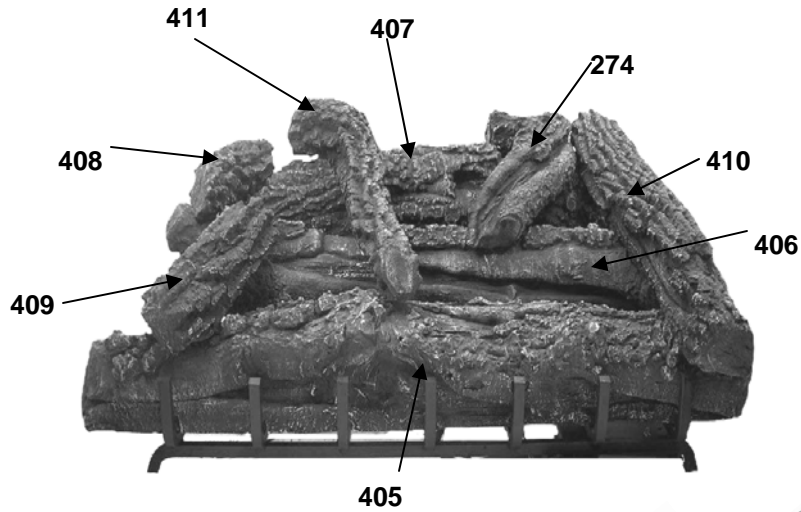
426 FRONT LOG



WARNING: It is imperative that the flame does not come into contact with the logs. Some adjustment with the logs in the notches may be required in order to ensure that there is no impingement. It is the installers' responsibility to ensure proper log placement and adjustment.

WARNING: Failure to position the parts in accordance with these diagrams or failure to use only parts specifically approved with this appliance will result in property damage or personal injury.

Regular Oak 33" Log Part Numbers:



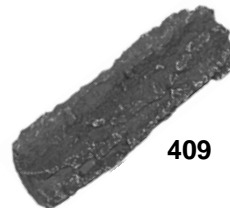
407 BACK LOG



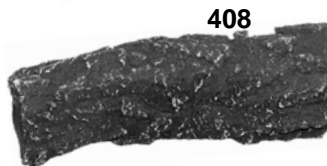
406 MIDDLE LOG



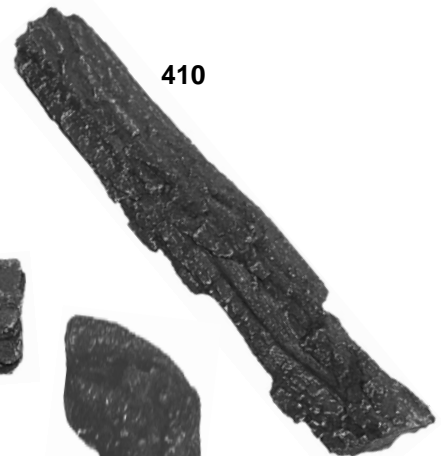
405 FRONT LOG



409



408



410



411



274

WARNING: It is imperative that the flame does not come into contact with the logs. Some adjustment with the logs in the notches may be required in order to ensure that there is no impingement. It is the installers' responsibility to ensure proper log placement and adjustment.

WARNING: Failure to position the parts in accordance with these diagrams or failure to use only parts specifically approved with this appliance will result in property damage or personal injury.