



# FIREPLACE DESIGN GUIDE



## A MAJESTIC LEGACY

Since 1894, Majestic® has been dedicated to keeping families warm. Originally a manufacturer of cast iron furnaces and coal chutes, Majestic created its first factory built fireplace in the 1930s and never looked back. Since then, Majestic has been producing wood and gas fireplaces known for outstanding durability, superior quality and stunning good looks.

With a wide range of eye-catching styles, convenient sizes and trending trims, Majestic products are designed to be the beautiful heart of your home. That's why, for decades, Majestic has been the fireplace of choice for homes across North America. We believe trust is earned, not given, and appreciate the faith you've shown in our brand for over 125 years.

**Come home to a Majestic gas fireplace, and enjoy the entertainment and romance you deserve.**



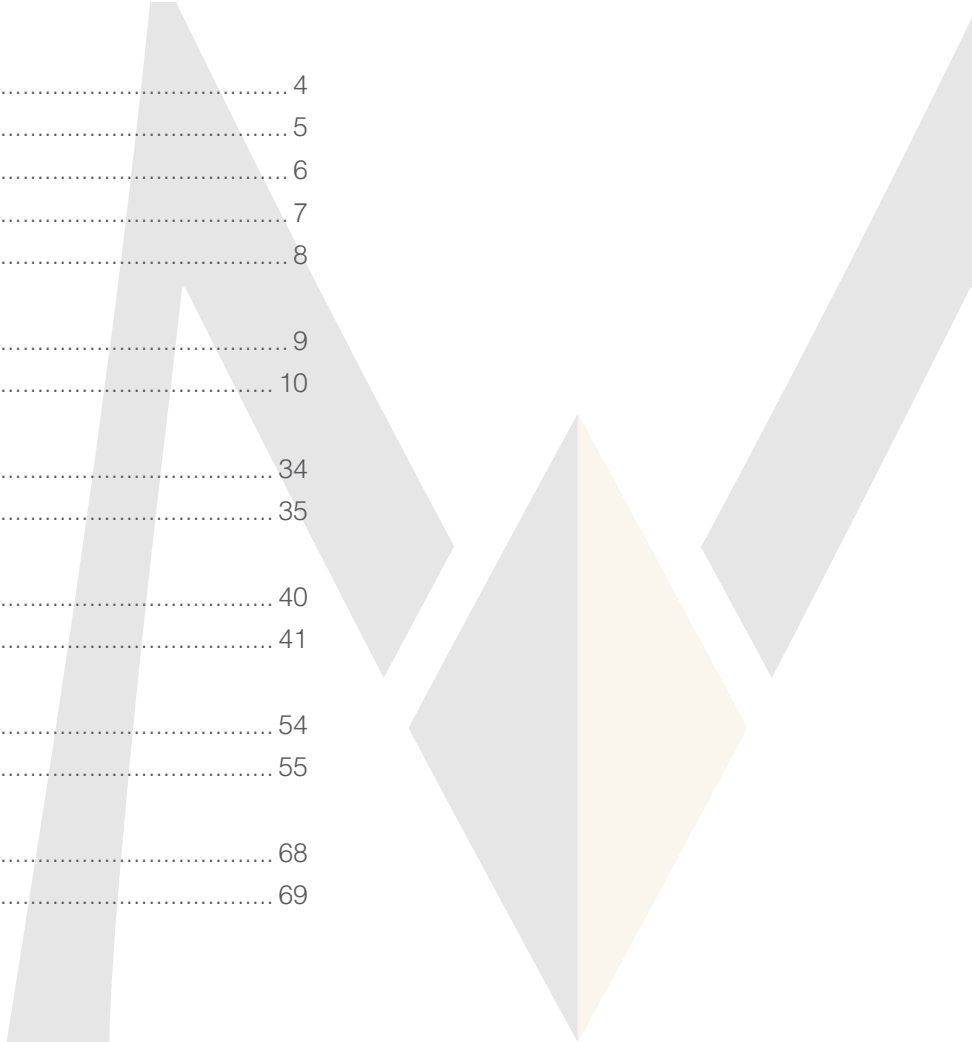
Circa 1960's



Echelon II 60" direct vent gas fireplace

# TABLE OF CONTENTS

Why a Fireplace.....	4
Seeing is Believing .....	5
Simple Specification.....	6
Design Considerations .....	7
Specification Checklist.....	8
Gas Fireplaces .....	9
Why a Gas Fireplace .....	10
Gas Fireplace Inserts .....	34
Why a Gas Fireplace Insert.....	35
Wood Burning Fireplaces.....	40
Why a Wood Fireplace .....	41
Electric Fireplaces.....	54
Why an Electric Fireplace.....	55
Outdoor Products .....	68
Why Outdoor .....	69





Marquis II 36" direct vent gas fireplace

## WHY A FIREPLACE?

From an elemental standpoint, fire is king. From a design standpoint, the regal ambiance a fireplace brings to a space is undeniable. With today's hearth innovations and technologies, it's possible to include a fireplace in virtually any room in your residential or commercial project.

#1

New homebuyers rank fireplaces as the top most desired decorative products in a new home<sup>1</sup>



A gas fireplace will add between

**\$2,950 -  
\$5,900**

to a home's value<sup>2</sup>



Direct vent gas is the **preferred technology** in every green building program<sup>3</sup>

1 2016 Realtor.com Homebuyer & Realtor Research, "Fireplace is the #1 Must Have Home Feature"; 2016 Angie's List Homebuyer & Realtor Research, "Both indoor and outdoor fireplaces are one of the most sought after home features by both homebuyers and realtors"  
2 Marshall & Swift Residential Cost Handbook  
3 2013 NAHB "What Homebuyers Really Want"

# SEEING IS BELIEVING

Competitors have tried to say their fireplaces are bigger, but are they really? Consumers can be misled by fireplace measurements that are not standardized. With Majestic, you can show the consumer the difference.

The Majestic brand uses a simple system that features the width of the fireplace's viewing area right in the product name. Consumers care about what they "see" not what is hidden. For example, the width of the viewing area on the Quartz 36 fireplace is 36 inches.





**CAD Details**

---



**Revit Objects**

---



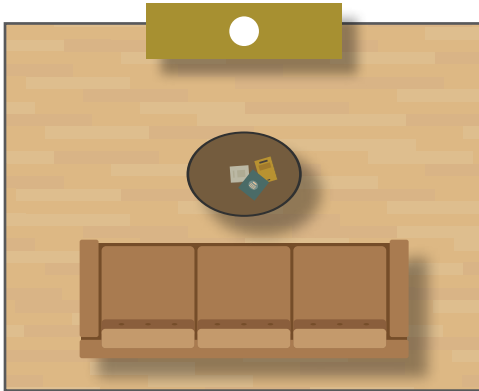
**CSI Specs**

## MAJESTIC MAKES SPECIFYING SIMPLE

Have confidence in your plans by leveraging our array of design and specification tools including proprietary CAD drawings compatible with the latest AutoCAD software, and 3D Revit BIM objects and families. Majestic also has complete 3-Part CSI/CSA fireplaces specifications for you to add instantly into section 10-31-00 of your construction documents.

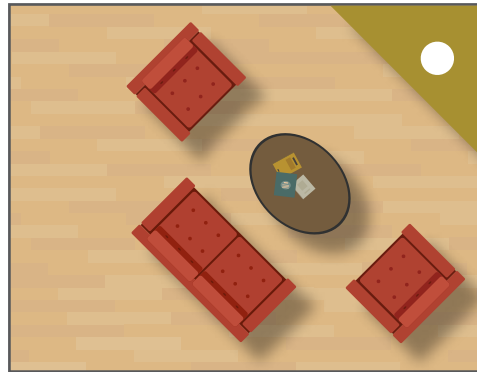
# DESIGN CONSIDERATIONS

The placement of the fireplace is critical to specifying the right fireplace for the right project. When evaluating how to best work a fireplace model into your floor plan, make sure to work with your local Hearth Expert™ to factor in the following components:



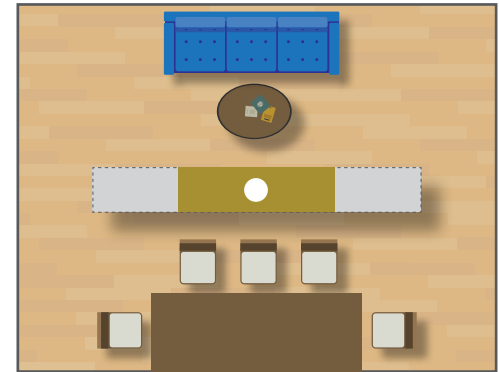
## Exterior Wall

A classic application that suits both traditional and contemporary fireplace models. These applications typically require the least complicated vent runs, but may require an exterior chase or bump out.



## Corner

Best used in floorplans with square footage to spare or where other architectural elements (i.e. windows) take precedence as a focal point. Traditional models or smaller modern linear units work best for these applications.



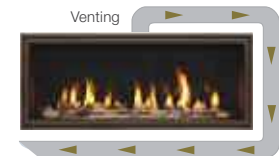
## Interior Wall / Island

An interior island application is an innovative way to enhance a space. See-through models are highly desired for these types of design, particularly in open floor plans. These applications may require a power vent system and a more complex vent run.



## Install Virtually Anywhere: Power Venting Technology

Fireplaces aren't just for exterior walls. A fan-powered accessory with slim venting can zigzag throughout your home – up, down, over or under – making it possible to install a gas fireplace virtually anywhere.



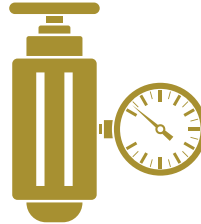
# SPECIFICATION CHECK LIST

Planning is critical to ensure the model you are specifying will work with your home plans. When specifying a fireplace model for your floor plan, make sure to work with your local Hearth Expert to factor in the following factors:



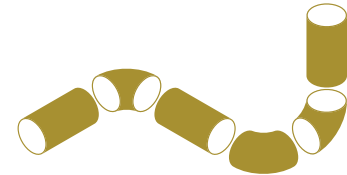
## Framing Dimensions

For both the fireplace itself and for any vent pipes that must terminate through a wall.



## Connection Requirements

Make sure you understand where venting, gas and electrical connection points are on the model you're specifying.



## Vent Run Requirements

The maximum and minimum lengths required for vertical, horizontal and mixed vent runs may vary from model to model. Understanding these parameters early on is essential in deciding where best to place the fireplace in your plans.



## Clearances to Combustibles

For mantels, flooring, surround material and appliances adjacent to the fireplace.



## Exterior Termination Location

Know the distances needed from the termination cap to nearby fenestrations, overhangs, soffits and sidewalks.





# GAS FIREPLACES

# WHY A GAS FIREPLACE?

Gas fueled fireplaces offer the most versatility of placement, model variety, and technology. Majestic gas fueled fireplaces will not only add an unforgettable focal point to your home, but ambiance and comfort to the spaces you're creating to deliver an experience of royal proportions. Clean-burning and efficient, building and design professionals should include at least one gas fueled fireplace in entry level new construction homes and a second or third fireplace when planning move-up or luxury/custom properties.



# Heat Management Solutions

Increase homeowner satisfaction by specifying a model with heat management.



**Passive Heat Kit** Allows heat to disperse naturally (no fan) into the room, reducing surface temperatures. Choose side, front or open wall register.



Side Register

Front Register

Open Wall Register

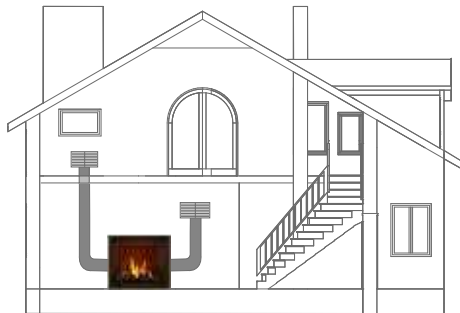


**SmartWall™ TV Kit** Design flexibility with an automatic fan that allows a TV to be mounted 12" above the fireplace without a mantel or shelf.<sup>1</sup>

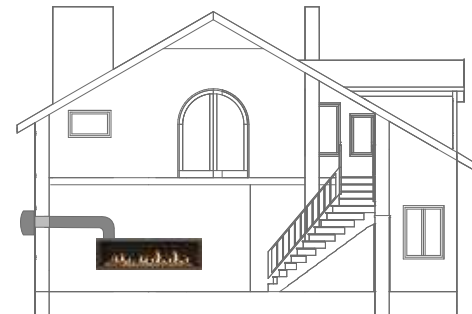
- <sup>1</sup> The SmartWall fan will and must run continuously to move the heat away from the area above the fireplace. Also minimum guidelines must be followed:
- Minimum of 3" gap between the TV and wall at all angles
  - Minimum of 24" to side wall
  - Ambient room temperature 75° F or less
  - See TV manufacturer's recommendation for TV operating temperatures
  - Minimum 60" from the top of the fireplace opening to the ceiling



**Heat-Zone® Kit** Draw heat from your fireplace to another room in your home, up to 20 feet away. Redirect up to 50% of the heat, while reducing wall temperatures above the fireplace.



**Heat-Out® Kit** Draw heat from your fireplace and direct it outside. Redirect up to 40% of the heat while reducing wall temperatures above the fireplace.





36" 42"

Marquis II 42" shown with front in bronze and Tavern Brown Herringbone brick interior

# MARQUIS II SERIES

## Direct Vent Gas Fireplace

The Marquis II series gas fireplace fills your home with comfort. Watch the scene unfold with an expansive view of the flames as they wrap around split logs. The authentic masonry appearance and accent lighting enhance the beautiful fire.

Interiors



Tavern Brown

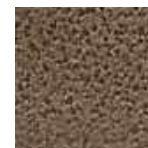


Tavern Brown Herringbone



Reflective Black Glass

Finishes



Bronze



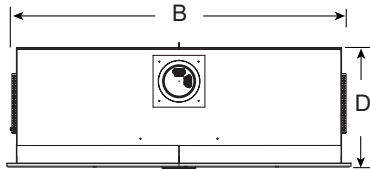
Charcoal



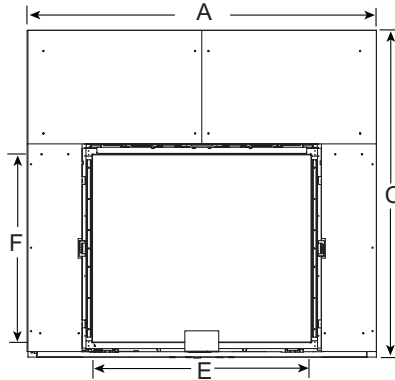
Pewter

# MARQUIS II SPECIFICATIONS

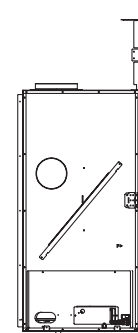
MODEL	FRONT WIDTH (A)		REAR WIDTH (B)		HEIGHT (C)		DEPTH (D)		GLASS SIZE (E x F)	BTU/HR INPUT
	ACTUAL	FRAMING	ACTUAL	FRAMING	ACTUAL	FRAMING	ACTUAL	FRAMING		
Marquis II 36	61" (1549mm)	59-1/2" (1511mm)	59-1/4" (1505mm)	59-1/2" (1511mm)	57-5/8" (1464mm)	56" (1422mm)	24" (610mm)	24" (610mm)	35-7/8" x 31-1/16" (911mm x 789mm)	25,000 - 44,000 (NG) 24,000 - 43,500 (LP)
Marquis II 42	67" (1702mm)	65-9/16" (1665mm)	65-5/16" (1659mm)	65-9/16" (1665mm)	62-5/8" (1591mm)	61" (1549mm)	24" (610mm)	24" (610mm)	41-7/8" x 36-1/16" (1064mm x 916mm)	30,000 - 54,500 (NG) 23,500 - 47,500 (LP)



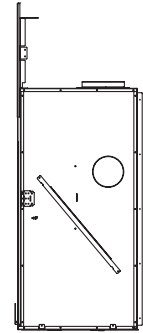
Top View



Front View



Left Side View



Right Side View



Heat-Zone



Heat Duct



Heat Out



PowerVent



42"

Marquis II 42" see-through with front in Charcoal and Tavern Brown brick interior

# MARQUIS II SEE-THROUGH

## Direct Vent Gas Fireplace

The Marquis See-Through gas fireplace is a breathtaking focal point that will add prestige to any space. Accent lighting and stunning flames compliment the traditional feel of split logs. Dazzle your homeowners and builder clients by specifying the Marquis II See-Through for your residential and commercial projects.

Interiors

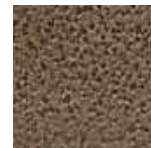


Cottage Red



Tavern Brown

Finishes



Bronze



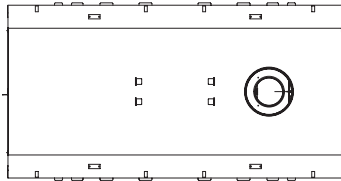
Charcoal



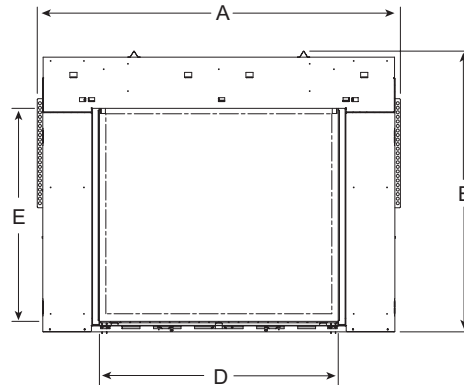
Pewter

# MARQUIS II SEE-THROUGH SPECIFICATIONS

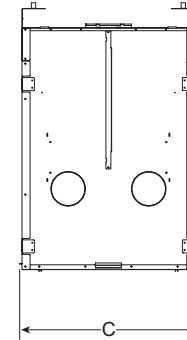
MODEL	FRONT WIDTH (A)		REAR WIDTH (A)		HEIGHT (B)		DEPTH (C)		GLASS SIZE (D x E)	BTU/HR INPUT
	ACTUAL	FRAMING	ACTUAL	FRAMING	ACTUAL	FRAMING	ACTUAL	FRAMING		
Marquis II See-Through	60" (1524mm)	60-1/4" (1530mm)	60" (1524mm)	60-1/4" (1530mm)	46-3/8" (1178mm)	46-1/2" (1181mm)	30" (762mm)	30" (762mm)	39-7/16" x 35-1/8" (1002mm x 892mm)	43,000 - 57,500 (NG) 39,000 - 52,000 (LP)



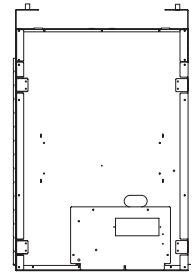
Top View



Front View



Left Side View



Right Side View



Heat-Zone



Heat Duct



Heat Out



PowerVent



36" 48" 60" 72"

### Front Options



Clean Face Trim (available in Black, Bronze or Pewter)



Picture Frame Front (available in Charcoal or Pewter)

Echelon II 72" with clean face trim in Black and Reflective Black Glass interior

# ECHELON II SERIES

## Direct Vent Gas Fireplace

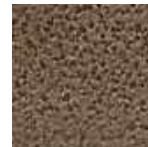
The exclusive Echelon II series gas fireplace creates a place to relax and enjoy life. Active flames and interior options give this contemporary fireplace a unique look. Get lost in its fire and the brilliance of glass illuminated by lights.

Interiors



Reflective Black Glass

Finishes



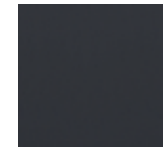
Bronze



Charcoal



Pewter



Black

Media



Driftwood Logs



Bronze



Diamond



Onyx



Sapphire

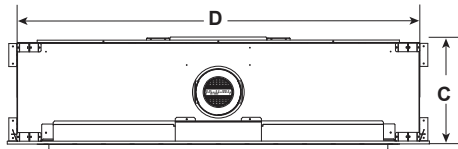


Natural Stones

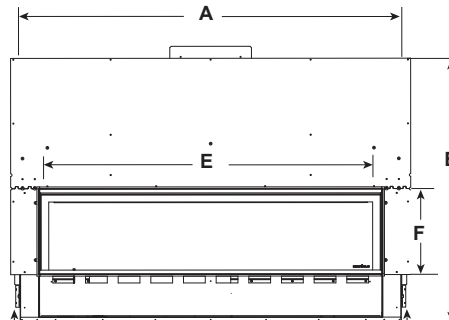


# ECHELON II SPECIFICATIONS

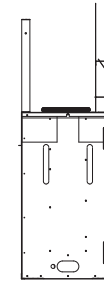
MODEL	FRONT WIDTH (A)		REAR WIDTH (D)		HEIGHT (B)		DEPTH (C)		GLASS SIZE (E x F)	BTU/HR INPUT
	ACTUAL	FRAMING	ACTUAL	FRAMING	ACTUAL	FRAMING	ACTUAL	FRAMING		
Echelon II 36	46-3/16" (1173mm)	48-1/4" (1226mm)	46-3/16" (1173mm)	48-1/4" (1226mm)	41-3/4" (1060mm)	42" (1067mm)	17-1/8" (435mm)	18-1/4" (464mm)	35-1/2" x 12-1/2" (902mm x 318mm)	30,000 (NG) / 27,000 (LP)
Echelon II 48	58" (1473mm)	60-1/4" (1530mm)	58" (1473mm)	60-1/4" (1530mm)	41-3/4" (1060mm)	42" (1067mm)	17-1/8" (435mm)	18-1/4" (464mm)	47-1/2" x 12-1/2" (1207mm x 318mm)	40,000 (NG) / 34,000 (LP)
Echelon II 60	70" (1778mm)	72-1/4" (1835mm)	70" (1778mm)	72-1/4" (1835mm)	47-3/4" (1213mm)	48" (1219mm)	17-1/8" (435mm)	18-1/4" (464mm)	59-1/2" x 12-1/2" (1511mm x 318mm)	50,000 (NG) / 37,500 (LP)
Echelon II 72	82" (2083mm)	84-1/4" (2140mm)	82" (2083mm)	84-1/4" (2140mm)	47-3/4" (1213mm)	48" (1219mm)	17-1/8" (435mm)	18-1/4" (464mm)	71-1/2" x 12-1/2" (1816mm x 318mm)	58,000 (NG) / 45,000 (LP)



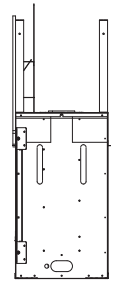
Top View



Front View



Left Side View



Right Side View



Heat-Zone



Heat Duct



PowerVent



36" 48"

### Front Options



Clean Face Trim (available in Black, Bronze or Pewter)



Picture Frame Front (available in Charcoal or Pewter)

Echelon II 48" See-Through with picture frame front in Charcoal

# ECHELON II SEE-THROUGH

## Direct Vent Gas Fireplace

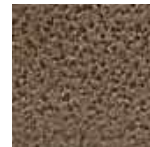
The exclusive Echelon II See-Through gas fireplace creates a place to relax and enjoy life. Active flames and interior options give this contemporary fireplace a unique look. Get lost in its fire and the brilliance of glass illuminated by lights.

Interiors



Reflective Black Glass

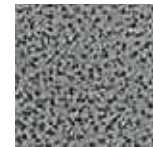
Finishes



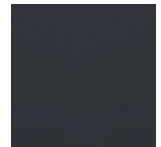
Bronze



Charcoal



Pewter



Black

Media



Driftwood Logs



Bronze



Diamond



Onyx



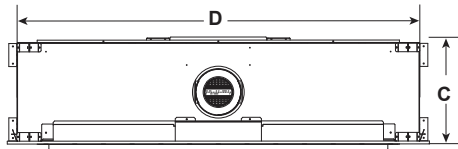
Sapphire



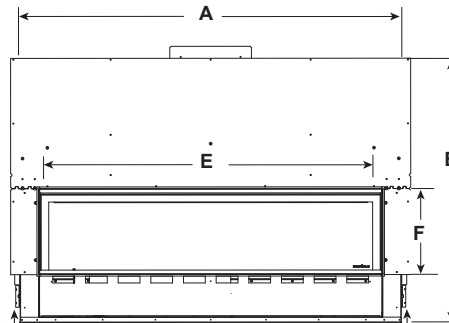
Natural Stones

# ECHELON II SEE-THROUGH SPECIFICATIONS

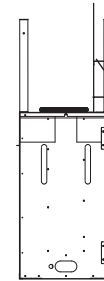
MODEL	FRONT WIDTH (A)		REAR WIDTH (D)		HEIGHT (B)		DEPTH (C)		GLASS SIZE (E x F)	BTU/HR INPUT
	ACTUAL	FRAMING	ACTUAL	FRAMING	ACTUAL	FRAMING	ACTUAL	FRAMING		
Echelon II See-Through 36	46-3/16" (1173mm)	48-1/4" (1226mm)	46-3/16" (1173mm)	48-1/4" (1226mm)	41-3/4" (1060mm)	42" (1067mm)	17-1/8" (435mm)	17" (432mm)	35-1/2" x 12-1/2" (902mm x 318mm)	30,000 (NG) / 27,000 (LP)
Echelon II See-Through 48	58" (1473mm)	60-1/4" (1530mm)	58" (1473mm)	60-1/4" (1530mm)	41-3/4" (1060mm)	42" (1067mm)	17-1/8" (435mm)	17" (432mm)	47-1/2" x 12-1/2" (1207mm x 318mm)	40,000 (NG) / 34,000 (LP)



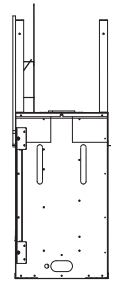
Top View



Front View



Left Side View



Right Side View



Heat-Zone



Heat Duct



PowerVent



32" 42"



Jade 32" with clean face trim in black, fade-resistant reflective black glass interior panels, LED accent lighting and natural stones

# JADE SERIES

## Direct Vent Gas Fireplace

The Jade fireplace helps you unwind and rebalance with a ribbon of continuous flame and a soothing style. With its great looks, many features, easy operation and the reliability of Majestic, life is better. Sit back, relax and enjoy your home with the Jade fireplace.

Interiors



Reflective Black Glass

Finishes



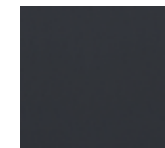
Bronze



Charcoal



Pewter



Black

Media



Driftwood Logs



Bronze



Diamond



Onyx



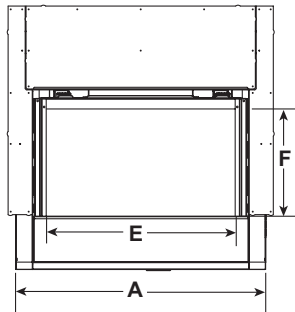
Sapphire



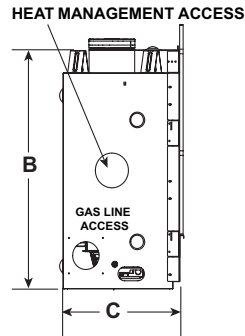
Natural Stones

# JADE SERIES SPECIFICATIONS

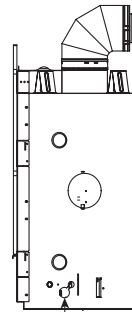
MODEL	FRONT WIDTH (A)		HEIGHT (B)		DEPTH (C)		REAR WIDTH (D)		GLASS SIZE (E X F)	BTU/HR INPUT
	ACTUAL	FRAMING	ACTUAL	FRAMING	ACTUAL	FRAMING	ACTUAL	FRAMING		
Jade 32"	36" (914)	37" (940)	38-1/16" (967)	36-1/2" (927)	17-3/4" (451)	17-3/4" (451)	25-3/4" (654)	37" (940)	27-1/4" x 15-1/4" (692 x 387)	19,000 (NG) 16,500 (LP)
Jade 42"	48" (1219)	49" (1245)	33-11/16" (856)	32-3/4" (832)	17-3/4" (451)	17-3/4" (451)	37-3/4" (959)	49" (1016)	39" x 15-1/4" (991 x 387)	25,250 (NG) 23,500 (LP)



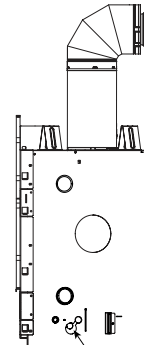
Front View



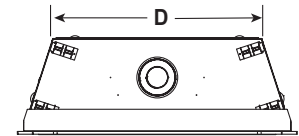
Left Side View



32" Right Side View



42" Right Side View



Top View



Heat-Zone



Heat Duct



Heat Out



SmartWall



PowerVent



36"

Opt for the contemporary look of flames rising through your choice of crushed glass media or stones:

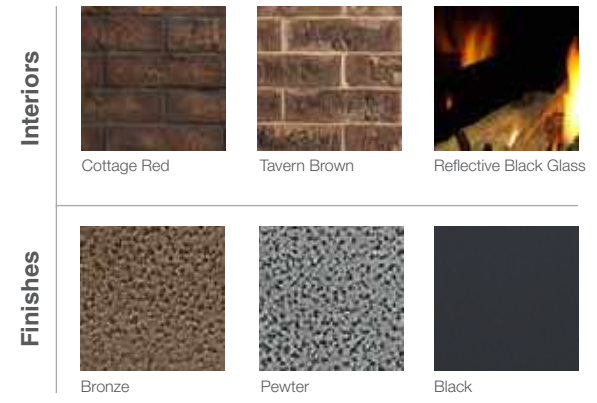


Pearl II see-through shown with Contemporary Rectangular front, reflective Black glass interior panels, Onyx and Diamond media with natural stones

# PEARL II SEE-THROUGH

## Direct Vent Gas Fireplace

Pearl II see-through fireplaces create a one-of-kind fireside experience. These multi-sided fireplaces provide warmth and comfort to multiple spaces with one unit. Customize your Pearl II see-through fireplace with several interior options, or opt for the contemporary look of flames rising through your choice of crushed glass media.



Interiors

Finishes



Cottage Red



Tavern Brown



Reflective Black Glass



Bronze



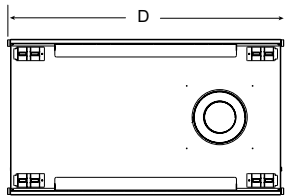
Pewter



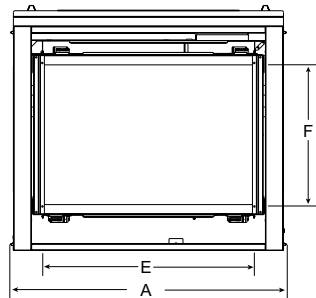
Black

# PEARL II SEE-THROUGH SPECIFICATIONS

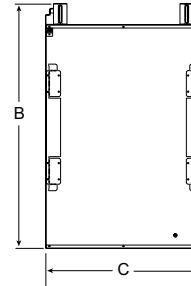
MODEL	FRONT WIDTH (A)		REAR WIDTH (D)		HEIGHT (B)		DEPTH (C)		GLASS SIZE (E x F)	BTU/HR INPUT
	ACTUAL	FRAMING	ACTUAL	FRAMING	ACTUAL	FRAMING	ACTUAL	FRAMING		
Pearl II See-Through	42-1/2" (1080mm)	43" (1092mm)	42-1/2" (1080mm)	43" (1092mm)	38" (965mm)	38-1/8" (968mm)	24" (610mm)	23" (584mm)	33" x 21-5/8" (838mm x 549mm)	38,000 (NG)



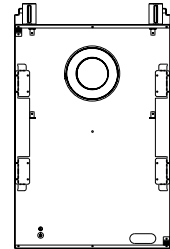
Top View



Front View



Left View



Right View



PowerVent



Opt for the contemporary look of flames rising through your choice of crushed glass media or stones:

Media



36"

Pearl II peninsula with decorative Black mesh front, reflective Black glass interior panels and split logs

# PEARL II PENINSULA

## Direct Vent Gas Fireplace

Pearl II peninsula fireplaces create a one-of-kind fireside experience. These multi-sided fireplaces provide warmth and comfort to multiple spaces with one unit. Customize your Pearl II peninsula fireplace with several interior options, or opt for the contemporary look of flames rising through your choice of crushed glass media.

Interiors



Cottage Red



Tavern Brown



Reflective Black Glass

Finishes

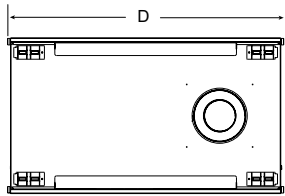


Black

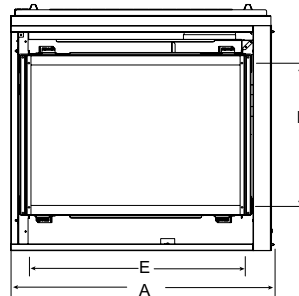


# PEARL II PENINSULA SPECIFICATIONS

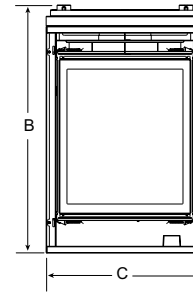
MODEL	FRONT WIDTH (A)		REAR WIDTH (D)		HEIGHT (B)		DEPTH (C)		GLASS SIZE (E x F)	BTU/HR INPUT
	ACTUAL	FRAMING	ACTUAL	FRAMING	ACTUAL	FRAMING	ACTUAL	FRAMING		
Pearl II Peninsula	40-1/2" (1029mm)	40" (1016mm)	40-1/2" (1029mm)	40" (1016mm)	38" (965mm)	38-1/8" (968mm)	24" (610mm)	23" (584mm)	33" x 21-5/8" (838mm x 549mm)	38,000 (NG)



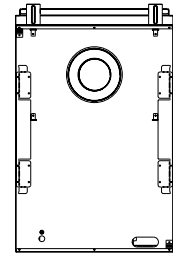
Top View



Front View



Left View



Non-Viewable End



PowerVent



Right corner fireplace with decorative Black mesh front

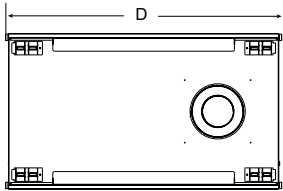
## CORNER SERIES

### Direct Vent Gas Fireplace

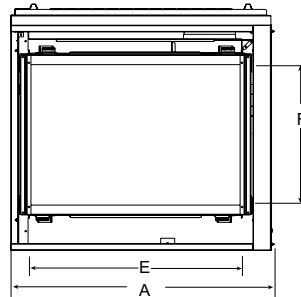
A unique corner unit creates a memorable experience. These corner fireplaces provide warmth and comfort to multiple spaces at once. Upgrade your corner fireplace with intuitive touch remote control and fan options.

# CORNER SPECIFICATIONS

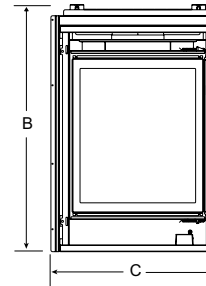
MODEL	FRONT WIDTH (A)		REAR WIDTH (D)		HEIGHT (B)		DEPTH (C)		GLASS SIZE (E x F)	BTU/HR INPUT
	ACTUAL	FRAMING	ACTUAL	FRAMING	ACTUAL	FRAMING	ACTUAL	FRAMING		
Left Corner	40-1/2" (1029mm)	40" (1016mm)	40-1/2" (1029mm)	40" (1016mm)	38" (965mm)	38-1/8" (968mm)	24-1/2" (622mm)	24" (610mm)	33" x 21-5/8" (838mm x 549mm)	38,000 (NG)
Right Corner	40-1/2" (1029mm)	40" (1016mm)	40-1/2" (1029mm)	40" (1016mm)	38" (965mm)	38-1/8" (968mm)	24-1/2" (622mm)	24" (610mm)	33" x 21-5/8" (838mm x 549mm)	38,000 (NG)



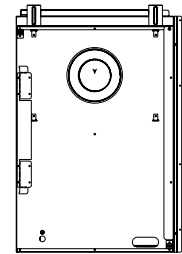
Top View



Front View



End View



Non-Viewable End



PowerVent



36" 42"

### Meridian Features

- 36" or 42" sizes
- Two fronts, three finish choices
- Choices of interior brick panels or reflective black glass (optional)
- Up to 35,000 BTUs
- Optional fan and remote controls

### Meridian Platinum Features

- 36" or 42" sizes
- Two fronts, three finish options
- Choices of interior brick panels or reflective black glass (required)
- More flames and upgraded log set
- Taller viewing area
- Ceramic glass for more radiant heat
- Up to 40,000 BTUs
- Optional fan and remote controls

Meridian Platinum with contemporary rectangular door in Bronze, Beige marble surround, Kenwood painted mantel, and Tavern Brown Herringbone interior

# MERIDIAN SERIES

## Direct Vent Gas Fireplace

Meridian series gas fireplaces come alive as flames swirl around split logs. A crisp and clean interior makes these fireplaces inviting, whether they're burning or not. Easily customize your Meridian series and for more heat and bigger flames, upgrade to the Meridian Platinum.

Interiors



Cottage Red



Tavern Brown



Tavern Brown  
Herringbone



Fade-Resistant  
Reflective Black Glass

Finishes



Bronze



Pewter



Black

# MERIDIAN SERIES SPECIFICATIONS



Heat-Zone



Heat Duct



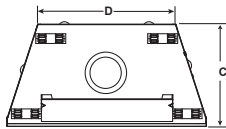
PowerVent



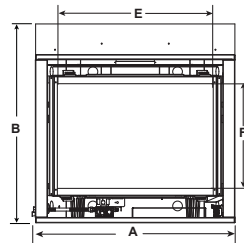
Heat Out

## Meridian

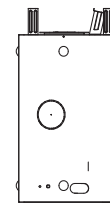
MODEL	FRONT WIDTH (A)		REAR WIDTH (D)		HEIGHT (B)		DEPTH (C)		GLASS SIZE (E x F)	BTU/HR INPUT
	ACTUAL	FRAMING	ACTUAL	FRAMING	ACTUAL	FRAMING	ACTUAL	FRAMING		
Meridian 36	41" (1041mm)	42" (1067mm)	28-1/2" (724mm)	42" (1067mm)	40-7/8" (1038mm)	40-1/8" (1019mm)	21" (533mm)	22" (559mm)	32" x 21-9/16" (813mm x 548mm)	30,000 (NG) / 29,000 (LP)
Meridian 42	48" (1219mm)	49" (1245mm)	35-1/2" (902mm)	49" (1245mm)	42-7/8" (1089mm)	42-1/8" (1070mm)	21" (533mm)	22" (559mm)	39" x 23-5/8" (991mm x 600mm)	35,000 (NG) / 34,000 (LP)



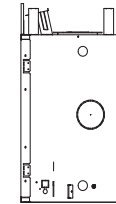
Top View



Front View



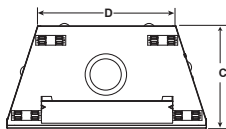
Left View



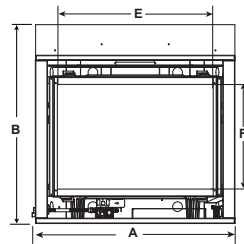
Right View

## Meridian Platinum

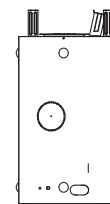
MODEL	FRONT WIDTH (A)		REAR WIDTH (D)		HEIGHT (B)		DEPTH (C)		GLASS SIZE (E x F)	BTU/HR INPUT
	ACTUAL	FRAMING	ACTUAL	FRAMING	ACTUAL	FRAMING	ACTUAL	FRAMING		
Meridian Platinum 36	41" (1041mm)	42" (1067mm)	28-1/2" (724mm)	42" (1067mm)	40-7/8" (1038mm)	40-1/8" (1019mm)	21" (533mm)	22" (559mm)	32" x 21-9/16" (813mm x 548mm)	35,000 (NG) / 33,000 (LP)
Meridian Platinum 42	48" (1219mm)	49" (1245mm)	35-1/2" (902mm)	49" (1245mm)	42-7/8" (1089mm)	42-1/8" (1070mm)	21" (533mm)	22" (559mm)	39" x 23-5/8" (991mm x 600mm)	40,000 (NG) / 37,000 (LP)



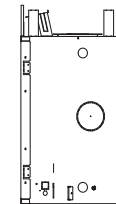
Top View



Front View



Left View



Right View



32" 36" 42"

Quartz 36 shown with Tavern Brown interior panels

Quartz 32 shown with contemporary conversion kit and reflective black glass

# QUARTZ SERIES

## Direct Vent Gas Fireplace

Quartz series gas fireplaces have the features you need, with the options you want. The shallow depth leaves you with living space to spare, while the versatile interior can be changed from traditional to contemporary to fit your style.

Interiors



Cottage Red



Tavern Brown



Reflective Black Glass

Media



Standard Logs



Bronze



Diamond



Onyx



Sapphire

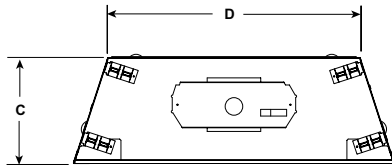


Natural Stones

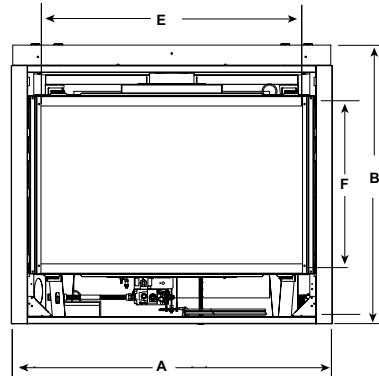
Contemporary glass firebed available for 32" and 36" only.

# QUARTZ SERIES SPECIFICATIONS

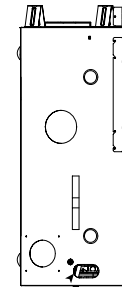
MODEL	FRONT WIDTH (A)		REAR WIDTH (D)		HEIGHT (B)		DEPTH (C)		GLASS SIZE (E x F)	BTU/HR INPUT
	ACTUAL	FRAMING	ACTUAL	FRAMING	ACTUAL	FRAMING	ACTUAL	FRAMING		
Quartz 32	36" (913mm)	37" (940mm)	25-3/4" (653mm)	37" (940mm)	34-3/8" (873mm)	34-3/4" (882mm)	16-5/16" (415mm)	16-1/4" (413mm)	27-3/16" x 18-1/16" (691mm x 459mm)	15,000 – 21,000 (NG)
Quartz 36	41" (1041mm)	42" (1067mm)	30-3/4" (781mm)	42" (1067mm)	37-7/8" (962mm)	38-1/4" (972mm)	16-5/16" (415mm)	16-1/4" (413mm)	32-1/16" x 21-1/2" (814mm x 546mm)	17,000 – 24,000 (NG)
Quartz 42	48" (1219mm)	49" (1245mm)	37-3/4" (959mm)	49" (1245mm)	39-9/16" (1005mm)	39-7/8" (1013mm)	16-5/16" (415mm)	16-1/4" (413mm)	39-1/16" x 23-9/16" (992mm x 599mm)	20,000 – 28,500 (NG)



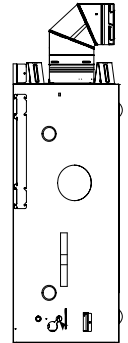
Top View



Front View



Left Side View



Right Side View



Heat-Zone



Heat Duct



PowerVent



Mercury shown standard

# MERCURY

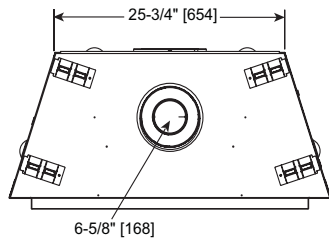
## Direct Vent Gas Fireplace

The Mercury gas fireplace adds comforting warmth, ambiance and convenience to your space. A simple and easy hearth experience.

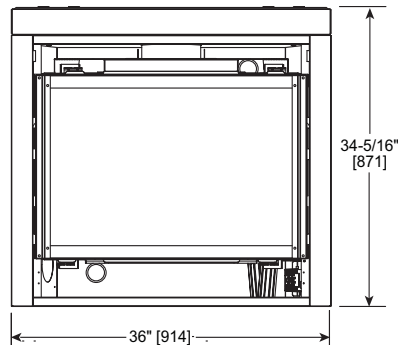


# MERCURY SPECIFICATIONS

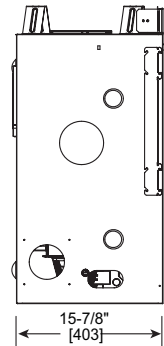
MODEL	FRONT WIDTH		REAR WIDTH		HEIGHT		DEPTH		GLASS SIZE	BTU/HR INPUT
	ACTUAL	FRAMING	ACTUAL	FRAMING	ACTUAL	FRAMING	ACTUAL	FRAMING		
Mercury	36" (914mm)	37" (940mm)	25-3/4" (654mm)	37" (940mm)	34-5/16" (9871mm)	34-3/4" (883mm)	16-5/16" (414mm)	16-1/4" (413mm)	27-3/16" x 18-1/16" (691mm x 459mm)	19,100 (NG)



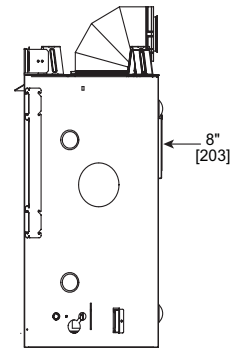
Top View



Front View



Left Side View



Right Side View



Heat-Zone



Heat Duct



PowerVent



# GAS FIREPLACE INSERTS

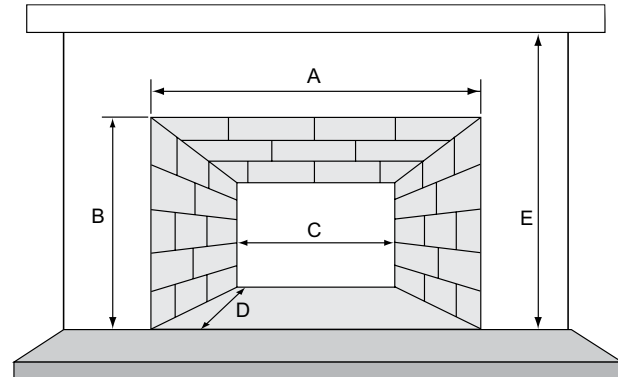
# WHY A GAS FIREPLACE INSERT?

Change your wood fireplace to an easy-to-use gas fireplace. Gas inserts from Majestic make relaxing simple with realistic split logs and flames. Convert your high-maintenance wood fireplace into a source of warmth and enjoyment, in three easy steps:

## STEP 1: Measure your existing fireplace opening and choose your insert

The height, width and depth of the existing fireplace opening is needed to ensure an appropriately sized insert is selected.

- A. Fireplace front width \_\_\_\_\_
- B. Fireplace front height \_\_\_\_\_
- C. Fireplace back width \_\_\_\_\_
- D. Fireplace depth \_\_\_\_\_
- E. Hearth to mantel height \_\_\_\_\_



## STEP 2: Select your surround and front

A surround fills the gap between the fireplace insert and existing fireplace opening. Choose from three sizes and two finishes for a unique look.

Personalize your insert with a front that fits your style. Select from three styles and two finishes.



SURROUND SIZE	RUBY35IN	RUBY30IN JASPER30IN	RUBY25IN
Small	42" x 29"	40" x 27"	35" x 23"
Medium	44" x 32"	42" x 30"	37" x 26"
Large	48" x 32"	44" x 32"	39" x 28"

### Front and Surround Finishes



## STEP 3: Select your options to customize your insert

Choose from interior panels, contemporary conversion kits and interior media to put the finishing touches on your insert.



25" 30" 35"

Opt for the contemporary look of flames rising through your choice of crushed glass media or stones:

**Media**

- Bronze\*
- Diamond\*
- Onyx\*
- Sapphire\*
- Natural Stones\*
- Driftwood Logs\*



Ruby 25" shown with Inside Fit front in black

# RUBY SERIES

## Gas Fireplace Inserts

The Ruby series gas fireplace inserts make enjoying a fire easy. All the ambiance and warmth of a split-log fire, without the mess and hassle of wood. A traditional fireplace can be completely changed to a brilliant glass firebed and driftwood logs. A fireplace to fit your lifestyle, whenever you want.

\*Available on Ruby 35 and Ruby 30

**Interiors**

- Cottage Red
- Tavern Brown
- Reflective Black Glass

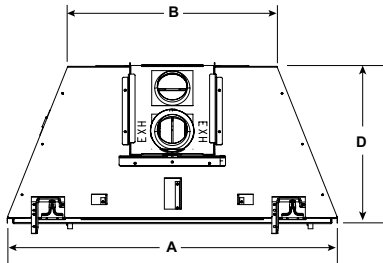
---

**Finishes**

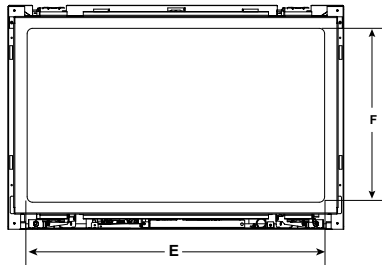
- Bronze
- Black

# RUBY SPECIFICATIONS

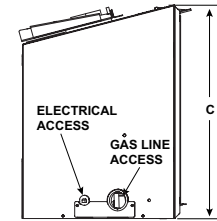
MODEL	FRONT WIDTH (A)		BACK WIDTH (B)		HEIGHT (C)		DEPTH (D)		VIEWING AREA (E X F)	BTU/HR INPUT
	UNIT	MIN FIREBOX OPENING	UNIT	MIN. OPEN	UNIT	MIN FIREBOX OPENING	UNIT	MIN FIREBOX OPENING		
RUBY25IN	26-1/8" (664mm)	26-5/8" (676mm)	14-5/8" (372mm)	15-1/8" (384mm)	17-1/16" (433mm)	17-5/16" (439mm)	14-1/2" (368mm)	15" (381mm)	22-1/2" X 12-7/16" (572mm X 316mm)	27,000
RUBY30IN	31-1/8" (791mm)	31-5/8" (803mm)	19-5/8" (499mm)	20-1/8" (511mm)	20-3/4" (527mm)	21" (533mm)	14-1/2" (368mm)	15" (381mm)	27-1/2" X 15-15/16" (699mm X 405mm)	32,700
RUBY35IN	36-1/8" (918mm)	36-5/8" (930mm)	24-5/8" (626mm)	25-1/8" (638mm)	24" (610mm)	24-1/4" (616mm)	14-1/2" (368mm)	15" (381mm)	32-1/2" X 19-3/8" (826mm X 492mm)	35,000



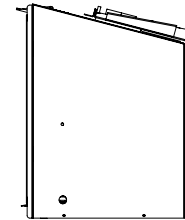
Top View



Front View



Left Side View



Right Side View



Direct Vent



IntelliFire Touch



Jasper 30" with Clean Screen front in black and Cottage Red interior panels

30"

# JASPER

## Gas Fireplace Insert

Installing the Jasper gas fireplace from Majestic can be quick and will provide significantly better efficiency than an open wood fireplace. Split-logs and flames deliver the ambiance and look you expect, while removing the effort wood fireplaces require.

Interiors



Cottage Red



Tavern Brown

Finishes



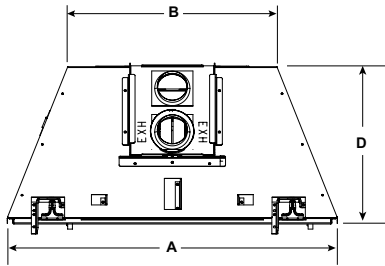
Bronze



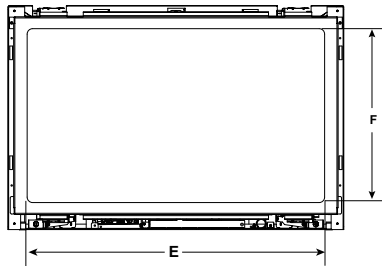
Black

# JASPER SPECIFICATIONS

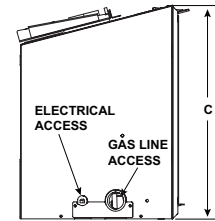
MODEL	FRONT WIDTH (A)		BACK WIDTH (B)		HEIGHT (C)		DEPTH (D)		VIEWING AREA (E X F)	BTU/HR INPUT
	UNIT	MIN FIREBOX OPENING	UNIT	MIN. OPEN	UNIT	MIN FIREBOX OPENING	UNIT	MIN FIREBOX OPENING		
JASPER30IN	31-1/8" (791mm)	31-5/8" (803mm)	19-5/8" (499mm)	20-1/8" (511mm)	20-3/4" (527mm)	21" (533mm)	14-1/2" (368mm)	15" (381mm)	27-1/2" X 15-15/16" (699mm X 405mm)	30,000



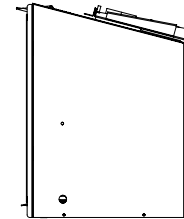
Top View



Front View



Left Side View



Right Side View



Direct Vent



IntelliFire



# WOOD BURNING FIREPLACES

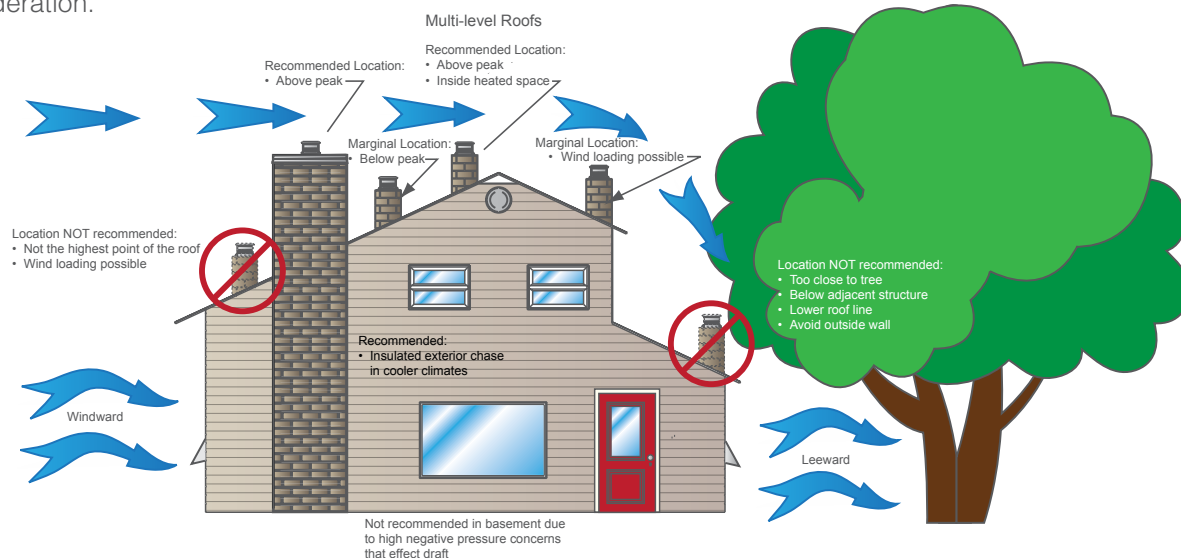


# WHY A WOOD FIREPLACE?

Majestic wood burning fireplaces are a robust, reliable and budget-friendly alternative to true masonry fireplaces and are ideal for projects where the hearth is used seasonally or when end-users are seeking the hands-on experience of a woodfueled appliance. It's important to understand local codes when specifying wood burning models, particularly when seeking to comply with EPA requirements and other state and city mandates.

## Termination Requirements for Wood Burning Fireplaces

The quality of the fire depends on where you design—in the chimney and termination components for the specified wood burning model. It's important to get with a local hearth installer early in the design process to ensure proper termination placement. Variables such as roof angle, prevailing wind location, and nearby overhangs, objects and openings may need to be taken into consideration.





36"

WarmMajic II shown with standard cast iron doors and firebrick interior

## WarmMajic II

### EPA Wood-Burning Fireplace

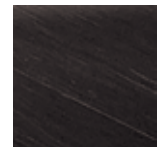
Enhance your home's heating profile with a clean-burning, efficient wood fireplace you can depend on. This eco-friendly wood fireplace exceeds the strictest environmental standards. Come home to the comfort of the WarmMajic II wood fireplace and enjoy big heat and bold flames.

Interiors



Firebrick

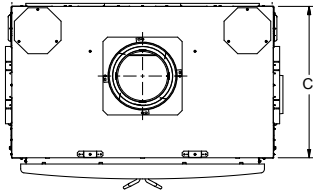
Finishes



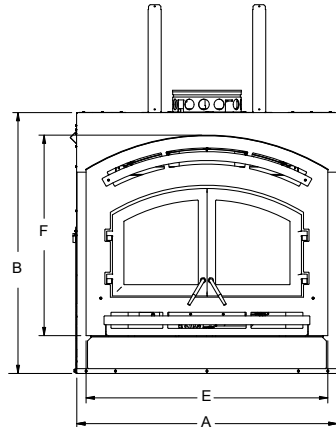
Black

# WarmMajic II SPECIFICATIONS

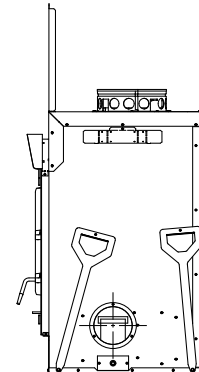
MODEL	FRONT WIDTH (A)		HEIGHT (B)		DEPTH (C)		FIREPLACE OPENING (E X F)	RADIANT OR CIRCULATING
	ACTUAL	FRAMING	ACTUAL	FRAMING	ACTUAL	FRAMING		
WARMMAJIC II	40" (1016mm)	42-1/2" (1067mm)	40-1/2" (1029mm)	56-3/4" (1441mm)	23-1/2" (597mm)	24** (610mm)	37" x 31-1/8" (940mm x 791mm)	Circulating



Top View



Front View



Side View



Heat-Zone

\*If interior of chase will be drywalled, add the thickness to this measurement.



36" 42" 50"

Ashland shown with Herringbone interior

# ASHLAND

## Wood-Burning Fireplace

The Ashland delivers on every level – customize the design with three available sizes and stylish finishing options. The large firebox gives you a front row seat for unforgettable fires, while the proven history of performance provides peace of mind for many years to come.<sup>1</sup>

<sup>1</sup> Ashland not available in Canada

Interiors



Traditional



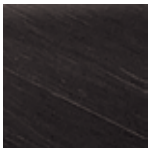
Herringbone



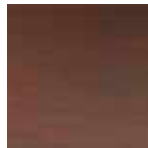
Bi-Fold Doors

Doors

Finishes



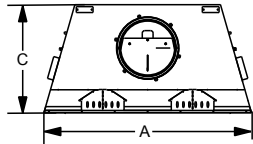
Black



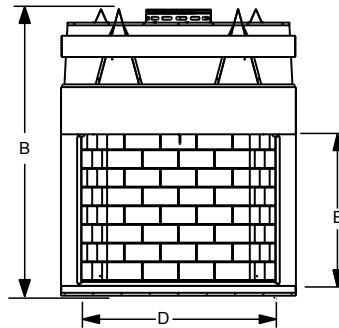
Bronze

# ASHLAND SPECIFICATIONS

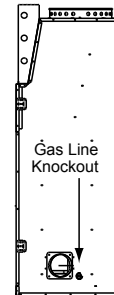
MODEL	WIDTH		HEIGHT		DEPTH		VIEWING AREA	RADIANT OR CIRCULATING
	ACTUAL	FRAMING	ACTUAL	FRAMING	ACTUAL	FRAMING		
ASH36	46-7/8" (1191mm)	47-7/8" (1194mm)	74-1/8" (1883mm)	74-1/2" (1892mm)	27-1/2" (699mm)	28-1/2" (724mm)	36" x 38" (914mm x 965mm)	Radiant
ASH42	52-7/8" (1343mm)	53-7/8" (1368mm)	74-1/8" (1883mm)	74-1/2" (1892mm)	27-1/2" (699mm)	28-1/2" (724mm)	42" x 38" (1067mm x 965mm)	Radiant
ASH50	60-7/8" (1524mm)	61-7/8" (1549mm)	74-1/8" (1883mm)	74-1/2" (1892mm)	27-1/2" (699mm)	28-1/2" (724mm)	50" x 38" (1270mm x 965mm)	Radiant



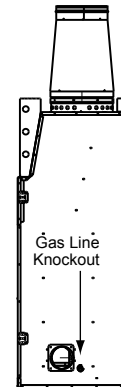
Top View



Front View



Side View



42" Side View



36" 42"

DSR42 Designer Series

## DESIGNER SERIES

### Wood-Burning Fireplace

Now you can enjoy the incomparable warmth and beauty of your wood burning fireplace from two rooms at once. Get twice the ambiance with a designer see through fireplace.

Doors



Bi-Fold Doors

Finishes



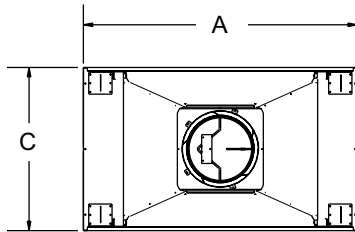
Black



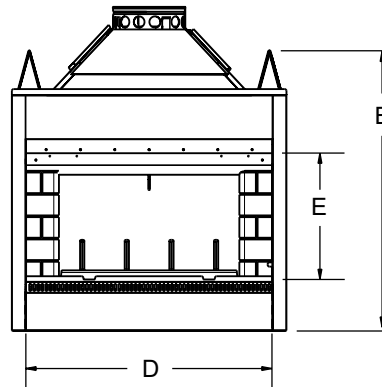
Stainless Steel (36 only)

# DESIGNER SERIES SPECIFICATIONS

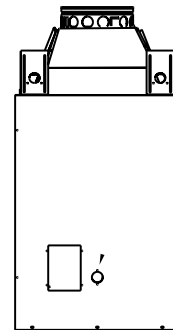
MODEL	WIDTH (A)		HEIGHT (B)		DEPTH (C)		VIEWING AREA (D x E)	RADIANT OR CIRCULATING
	ACTUAL	FRAMING	ACTUAL	FRAMING	ACTUAL	FRAMING		
Designer 36	40" (1016mm)	41" (1041mm)	41-1/4" (1022mm)	41-1/2" (1054mm)	24" (610mm)	23" (584mm)	36" x 20-7/8" (914mm x 530mm)	Radiant
Designer 42	47" (1194mm)	48" (1219mm)	58-7/8" (1496mm)	39-1/8" (994mm)	28" (711mm)	27" (686mm)	42" x 23" (1067mm x 584mm)	Radiant



Top View



Front View



Side View



36" 42" 50"

Biltmore shown with Traditional interior

# BILTMORE SERIES

## Wood-Burning Fireplace

Larger than life style, classic masonry appeal and a viewing area like no other. The expansive viewing area (available in up to 50")<sup>1</sup> becomes the natural focal point of any room, and the perfect place to relax.

<sup>1</sup> 50" size not available in Canada

Interiors



Traditional



Herringbone



Black

Finishes

Doors



Bi-Fold Doors



Grand Vista Doors

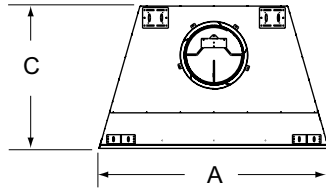


Contour Screen Doors

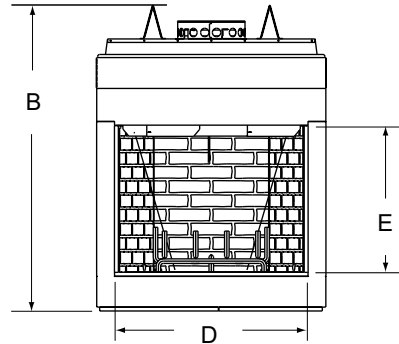


# BILTMORE SERIES SPECIFICATIONS

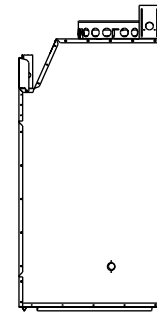
MODEL	WIDTH (A)		HEIGHT (B)		DEPTH (C)		VIEWING AREA (D x E)	RADIANT OR CIRCULATING
	ACTUAL	FRAMING	ACTUAL	FRAMING	ACTUAL	FRAMING		
Biltmore 36	44-1/2" (1130mm)	45-1/2" (1156mm)	59-1/4" (1505mm)	59-3/4" (1518mm)	27-1/2" (699mm)	28-1/2" (724mm)	36" x 28-1/2" (914mm x 724mm)	Radiant
Biltmore 42	50-1/2" (1283mm)	51-1/2" (1308mm)	59-1/4" (1505mm)	59-3/4" (1518mm)	27-1/2" (699mm)	28-1/2" (724mm)	42" x 28-1/2" (1067mm x 724mm)	Radiant
Biltmore 50 <sup>1</sup>	60-5/8" (1540mm)	61-5/8" (1565mm)	70-1/2" (1791mm)	71" (1803mm)	29-1/2" (749mm)	30-1/2" (775mm)	50" x 33" (1270mm x 838mm)	Radiant



Top View



Front View



Side View



36" 42"

Sovereign shown with Traditional interior and bi-fold doors

# SOVEREIGN SERIES

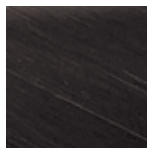
## Wood-Burning Fireplace

Some things never go out of style, like the beauty and old world craftsmanship of a Sovereign wood burning fireplace. Authentic masonry design and attractive finishing options allow you to create the centerpiece of your home.

Interiors



Traditional



Black

Finishes

Doors



Bi-Fold Doors



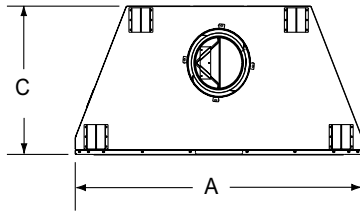
Grand Vista Doors



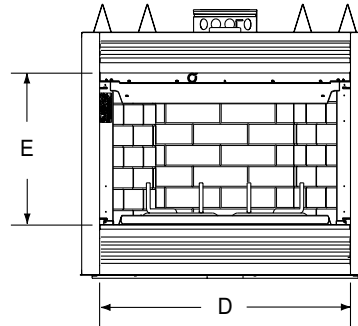
Gasketed Doors  
(For circulating models only)

# SOVEREIGN SERIES SPECIFICATIONS

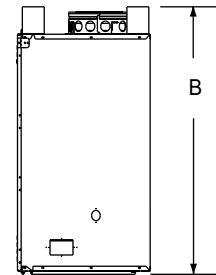
MODEL	WIDTH (A)		HEIGHT (B)		DEPTH (C)		VIEWING AREA (D x E)	RADIANT OR CIRCULATING
	ACTUAL	FRAMING	ACTUAL	FRAMING	ACTUAL	FRAMING		
Sovereign 36	42" (1067mm)	43" (1092mm)	41-1/4" (1048mm)	41-1/2" (1054mm)	22-3/4" (578mm)	23" (584mm)	36" x 21-3/8" (914mm x 543mm)	Radiant/Circulating
Sovereign 42	48" (1219mm)	49" (1245mm)	41-1/4" (1048mm)	41-1/2" (1054mm)	22-3/4" (578mm)	23" (584mm)	42" x 21-3/8" (1067mm x 543mm)	Radiant/Circulating



Top View



Front View



Side View



36" 42"

Royalton shown with Traditional interior

# ROYALTON SERIES

## Wood-Burning Fireplace

The Royalton has earned a strong reputation for classical style, superior performance and outstanding features. The detailed brick interior with classic masonry look, up to 42" viewing area and available glass doors make this fireplace a stunning addition to your home's décor.

Interiors



Traditional

Finishes



Black

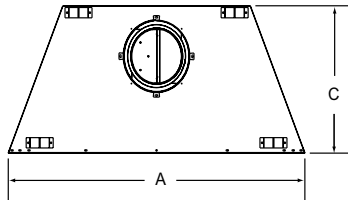
Doors



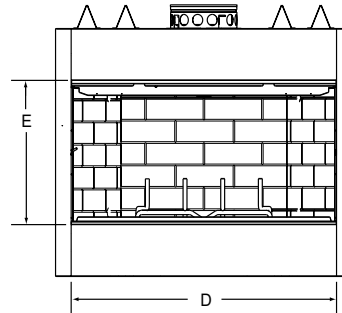
Bi-Fold Doors

# ROYALTON SERIES SPECIFICATIONS

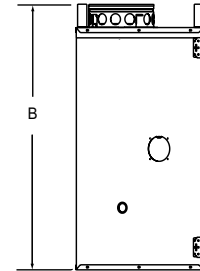
MODEL	WIDTH (A)		HEIGHT (B)		DEPTH (C)		VIEWING AREA (D x E)	RADIANT OR CIRCULATING
	ACTUAL	FRAMING	ACTUAL	FRAMING	ACTUAL	FRAMING		
Royalton 36	41" (1041mm)	42" (1067mm)	39-1/2" (1003mm)	39-3/4" (1010mm)	21-3/8" (543mm)	21-1/2" (546mm)	36" x 21" (914mm x 533mm)	Radiant/Circulating
Royalton 42	47" (1194mm)	48" (1219mm)	39-1/2" (1003mm)	39-3/4" (1010mm)	21-3/8" (543mm)	21-1/2" (546mm)	42" x 21" (1067mm x 533mm)	Radiant/Circulating



Top View



Front View



Side View

# ELECTRIC FIREPLACES



# WHY AN ELECTRIC FIREPLACE?

A fast growing hearth category, electric fireplaces are an excellent option when no other fuel sources are available or when venting gas or wood fireplaces would be difficult.

---



## Easy and Economical

Electric fireplaces provide a unique focal point without expensive installation costs as they require no venting. The ability to safely place a TV or artwork within inches of the fireplace provides interior design flexibility. Ideal as a second or third fireplace, electric fireplaces can be installed in any room of a property.



## Heat Optional

The heat output of electric fireplaces can be adjusted or turned off altogether – an excellent solution for projects where the ambiance of a fire is desired without the supplemental warmth. Specify electric models when building in warm climates or for spaces that would benefit from a heat-optional function.



## Environmentally Friendly

Electric fireplaces emit zero combustion by-products and are allowed in all national green building programs.



30" 36"

SimpliFire Built-In shown standard

# SIMPLIFIRE BUILT-IN

## Electric Fireplace

Adding the traditional look of a fireplace to your home has never been this easy. A detailed masonry-style interior, textured log set and four different flame intensity levels enhance the appeal of the SimpliFire Built-In electric fireplace series. Enjoy the ambiance – with or without the heat. Experience “Fire Made Simple.”

Fronts

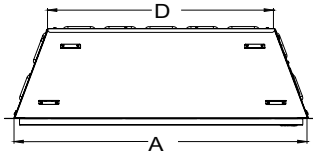


Optional Front

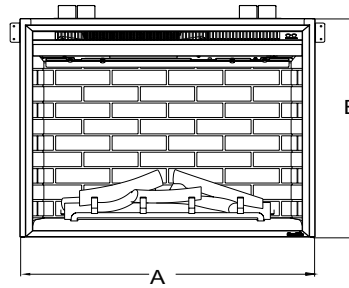


# SIMPLIFIRE BUILT-IN SPECIFICATIONS

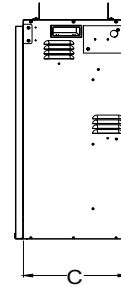
MODEL	FRONT WIDTH (A)		REAR WIDTH (D)		HEIGHT (B)		DEPTH (C)		BTU/HR OUTPUT	
	ACTUAL	FRAMING	ACTUAL	FRAMING	ACTUAL	FRAMING	ACTUAL	FRAMING	120V	240V
SimpliFire Built-In 30	31" (787mm)	32" (813mm)	24" (610mm)	32" (813mm)	26-3/4" (679mm)	26-13/16" (681mm)	11" (279mm)	11-5/8" (295mm)	4,800	10,000
SimpliFire Built-In 36	37" (940mm)	38" (965mm)	30" (762mm)	38" (965mm)	31-7/32" (793mm)	31-7/32" (793mm)	11" (279mm)	11-5/8" (295mm)	4,800	10,000



Top View



Front View



Side View



SimpliFire 30-Inch fireplace insert

# SIMPLIFIRE

## Electric Fireplace Insert

There has never been a more economical way to transform your drafty, dated fireplace into an efficient and attractive source of warmth. Firebox accent lighting, textured log set and multiple flame intensity levels enhance the allure. Best of all, enjoy the ambiance with or without the heat for year-round use. This is "Fire Made Simple."

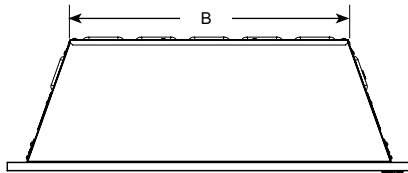
Multi-Function Remote



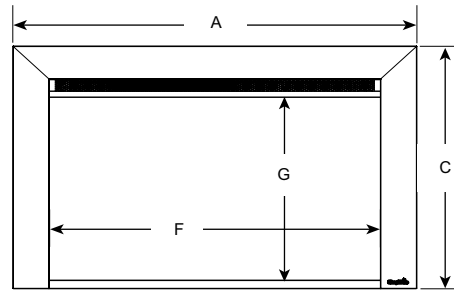
An intuitive multifunction remote control comes standard

# SIMPLIFIRE INSERT SPECIFICATIONS

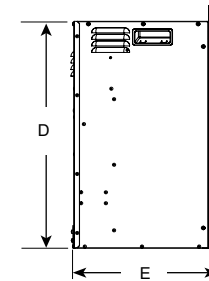
MODEL	BTU OUTPUT	WIDTH			HEIGHT			DEPTH		VIEWING AREA (F X G)
		FRONT (A)	BACK (B)	FRAMING	FRONT (C)	BACK (D)	FRAMING	UNIT (E)	FRAMING*	
30" Fireplace Insert SF-INS30-BK	5,000	33-1/8" [841]	22-7/8" [581]	31" [787]	21-7/8" [556]	20-1/2" [521]	21-3/8" [543]	11-7/8" [302]	11-1/2" [292]	27" x 18-1/8" [686 x 460]



Top View



Front View



Side View



40" 48" 60" 84"

Simplifire Allusion 48-Inch shown with multi-color flame and white ember bed.

# SIMPLIFIRE ALLUSION

## Recessed Linear Electric Fireplace

The Allusion electric fireplace series embraces modern design by combining linear proportions with a multitude of flame and ember bed lighting themes. These fireplaces can be installed fully or partially recessed into the wall, or hung on the wall for quick enjoyment.

Optional Media



Driftwood Logs

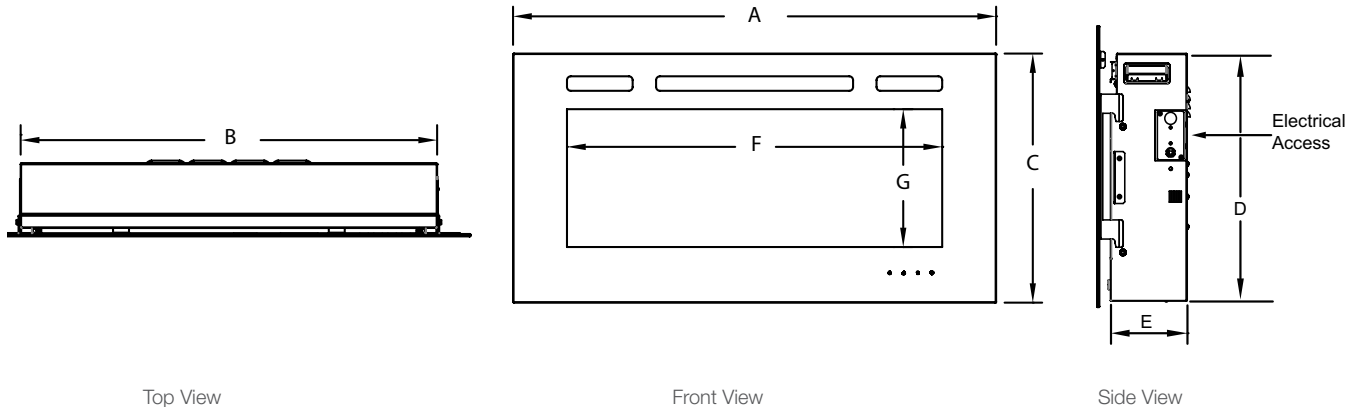


Ceramic Stones

# SIMPLIFIRE ALLUSION SPECIFICATIONS

MODEL	BTU OUTPUT	WIDTH			HEIGHT			DEPTH		VIEWING AREA (F X G)
		FRONT (A)	BACK (B)	FRAMING	FRONT (C)	BACK (D)	FRAMING	UNIT (E)	FRAMING*	
40" Recessed Linear SF-ALL48-BK	5,000	40-1/2" [1029]	35" [889]	36" [914]	20-1/4" [515]	17-13/16" [453]	18-1/8" [461]	5-15/16" [151]	6" [152]	31-3/8" x 11-1/4" [797 x 285]
48" Recessed Linear SF-ALL48-BK	5,000	48-7/16" [1230]	42-13/16" [1088]	44-5/16" [1126]	20-1/4" [515]	17-13/16" [453]	18-1/8" [461]	5-15/16" [151]	6" [152]	39-3/8" x 11-1/4" [1000 x 285]
60" Recessed Linear SF-ALL60-BK	5,000	60-1/4" [1530]	54-5/8" [1388]	56-1/8" [1426]	20-1/4" [515]	17-13/16" [453]	18-1/8" [461]	5-15/16" [151]	6" [152]	51-3/16" x 11-1/4" [1300 x 285]
84" Recessed Linear SF-ALL48-BK	5,000	83-7/8" [2130]	78-1/4" [1988]	79-1/2" [2019]	20-1/4" [515]	17-13/16" [453]	18-1/8" [461]	5-15/16" [151]	6" [152]	74-7/8" x 11-1/4" [1902 x 285]

\*Reflects fully recessed into a 6" interior wall. Framing may need to be adjusted when installing in an exterior wall requiring insulation. Refer to installation manual for details.



Top View

Front View

Side View



50" 60" 72"

SimpliFire Allusion 60-inch shown with ceramic white stones

## SIMPLIFIRE ALLUSION PLATINUM Recessed Linear Electric Fireplace

The Allusion Platinum electric fireplace ushers in unparalleled warmth and coziness to any space, without the need for gas lines or venting. Creating an elegant focal point in your home has never been easier. Install fully-recessed for a flush look, or surface-mount with the optional wall-mount kit.

Standard Media



Clear Crystals



Ceramic Stones

Optional Media

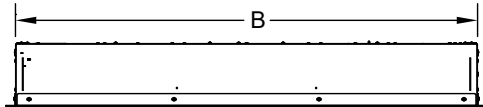


Driftwood Logs

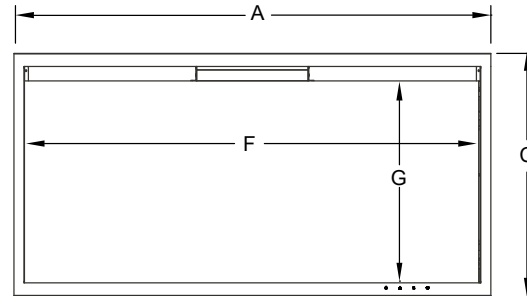
# SIMPLIFIRE ALLUSION PLATINUM SPECIFICATIONS

MODEL	BTU OUTPUT	WIDTH			HEIGHT			DEPTH		VIEWING AREA (F X G)
		FRONT (A)	BACK (B)	FRAMING	FRONT (C)	BACK (D)	FRAMING	UNIT (E)	FRAMING*	
50" Recessed Linear SF-ALLP50-BK	5,000	52-5/16" [1329]	50-1/2" [1295]	51" [1295]	20-7/16" [519]	19-3/8" [492]	19-1/2" [495]	5-5/8" [143]	2" x 6"	48" x 15" [1219 x 381]
60" Recessed Linear SF-ALLP60-BK	5,000	62-5/16" [1583]	60-1/2" [1537]	61" [1549]	20-7/16" [519]	19-3/8" [492]	19-1/2" [495]	5-5/8" [143]	2" x 6"	58" x 15" [1473 x 381]
72" Recessed Linear SF-ALLP72-BK	5,000	74-5/16" [1888]	72-1/2" [1842]	73" [1854]	20-7/16" [519]	19-3/8" [492]	19-1/2" [495]	5-5/8" [143]	2" x 6"	70" x 15" [1778 x 381]

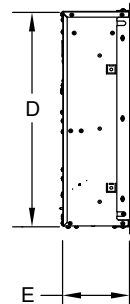
\*Reflects fully recessed into a 6" interior wall. Framing may need to be adjusted when installing in an exterior wall requiring insulation. Refer to installation manual for details.



Top View



Front View



Side View



43" 55" 78"

SimpliFire Allusion 48-Inch shown with multi-color flame and white ember bed

## SIMPLIFIRE SCION

### Clean Face Linear Electric Fireplace

The SimpliFire Scion fireplace provides the warmth and coziness of a fireplace without the need for gas lines or venting. Elevated style shines through with the sleek and modern design – no mesh screens or visible heat vents, a multitude of flame and ember bed lighting themes, and the ability to bring finishing materials right up to the edge of the fireplace for a flush look.

Standard Media



Driftwood Logs



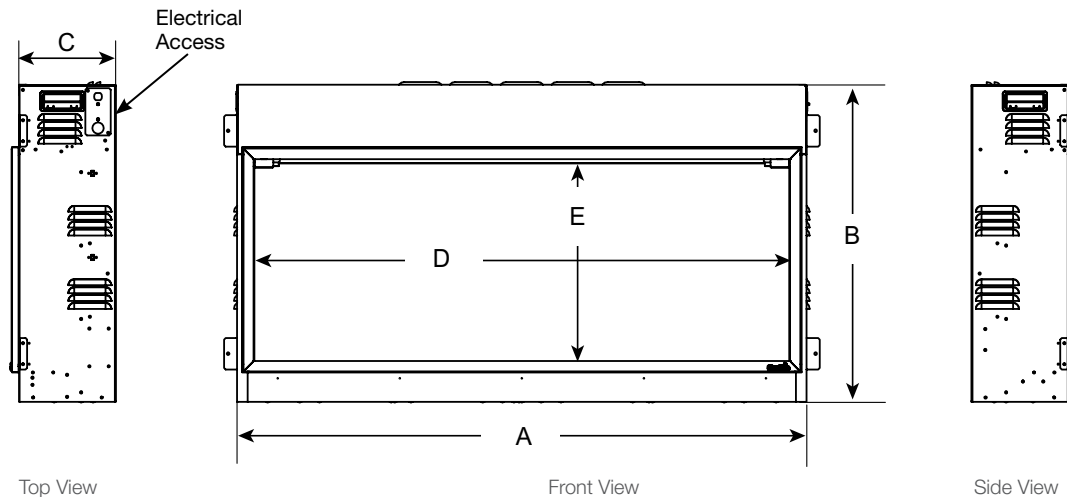
Clear Crystals



# SIMPLIFIRE SCION SPECIFICATIONS

MODEL	BTU OUTPUT	WIDTH (A)*		HEIGHT (B)		DEPTH (C)*		VIEWING AREA (D X E)
		UNIT	FRAMING	UNIT	FRAMING	UNIT	FRAMING	
43" Clean Face Linear SF-SC43-BK	5,000	44-1/2" [1130]	45" [1143]	23-7/8" [606]	24-1/4" [616]	7-5/8" [194]	7-5/8" [194]	41-1/2" x 15" [1054 x 381]
55" Clean Face Linear SF-SC55-BK	5,000	56-1/2" [1435]	57" [1448]	23-7/8" [606]	24-1/4" [616]	7-5/8" [194]	7-5/8" [194]	53-1/4" x 15" [1353 x 381]
78" Clean Face Linear SF-SC78-BK	5,000	80" [2032]	80-1/2" [2045]	23-7/8" [606]	24-1/4" [616]	7-5/8" [194]	7-5/8" [194]	76-7/8" x 15" [1953 x 381]

\*Dimensions include louver projection on sides and top panels





38" 58"

SimpliFire 58-Inch Wall-Mount shown with orange flame

## SIMPLIFIRE WALL-MOUNT

### Electric Fireplace

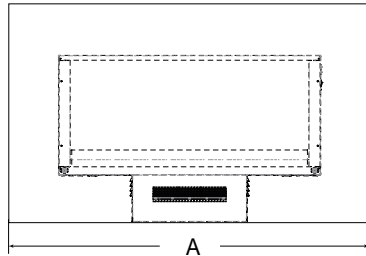
Create a distinct contemporary look. Our Wall-Mount electric fireplace models provide an instant upgrade to any space, with or without the heat. Simply hang these units on the wall and plug them in. Standard LED backlighting in multiple colors will accent any decor.



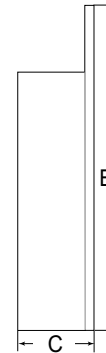
SimpliFire 38-Inch Wall-Mount shown with stand

# SIMPLIFIRE WALL-MOUNT SPECIFICATIONS

MODEL	FRONT WIDTH (A)		REAR WIDTH (A)		HEIGHT (B)		DEPTH (C)		BTU/HR OUTPUT
	ACTUAL	FRAMING	ACTUAL	FRAMING	ACTUAL	FRAMING	ACTUAL	FRAMING	
SimpliFire Wall-Mount 38	37-3/4" (959mm)	N/A	34-3/4" (883mm)	N/A	17-3/4" (451mm) 20-3/4" w/stand (527mm)	N/A	4-3/4" (121mm)	N/A	4,800
SimpliFire Wall-Mount 58	58-1/4" (1480mm)	N/A	42-15/16" (1091mm)	N/A	26-3/8" (670mm)	N/A	5-7/8" (149mm)	N/A	4,800



Front View



Side View



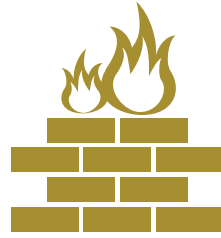
# OUTDOOR PRODUCTS

# WHY OUTDOORS?

As the lines between indoor and outdoor living continue to blur, adding a fire feature to your outdoor space design will extend its seasonality and deliver a vibrant feature that your clients will clamor for. Designed specifically to withstand the elements, outdoor fire features come in a variety of styles – from traditional to contemporary linear, fireplace to fire pit. Both gas fueled and wood burning appliances are available to suit the goals of your clients and end-users. Incorporate into the exterior of your building or as an attractive free-standing island application.



Outdoor fireplaces are in the **top 10** most essential and desired outdoor home features<sup>1</sup>.



Fire features are the **most popular** outdoor design element<sup>2</sup>.



**90%** of real estate agents say an outdoor fireplace increases a home's value<sup>3</sup>.



**70%** of design and build firms report an increased demand for outdoor living space<sup>4</sup>.

1: National Association Home Builders, "Housing Preferences of Homebuyers – The Boomer Generation & How They Compare to Other Homebuyers", Dec. 2016

2: Source: American Society of Landscape Architects 2016 Residential Landscape Architecture Trends Survey

3: Source: Houzz.com 2016 Landscaping Study

4: Source: American Institute of Architects



36"

Fortress (indoor side) shown with Herringbone brick refractory

Fortress (outdoor side) shown with Herringbone brick refractory

# FORTRESS

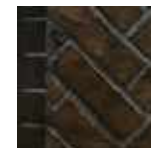
## Indoor/Outdoor Gas Fireplace

Seamlessly integrate your indoor and outdoor space with the Fortress see-through gas fireplace. The traditional style, expansive viewing area and authentic look fit perfectly in a variety of spaces. Non-reflective glass, accent lights and multiple interior brick options make this unique fireplace the ultimate in traditional luxury design. Enjoy the view both inside and out with the Fortress.

Interiors



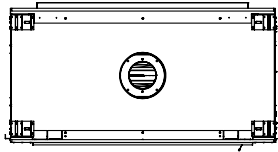
Traditional Brick



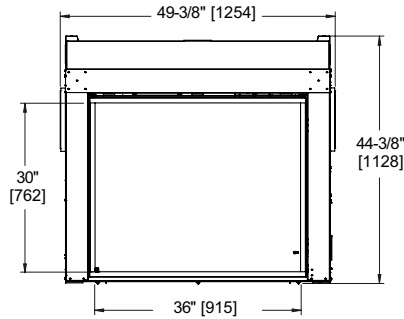
Herringbone Brick

# FORTRESS SPECIFICATIONS

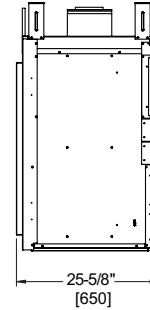
MODEL	FRONT WIDTH		REAR WIDTH		HEIGHT		DEPTH		GLASS SIZE	BTU/HR INPUT
	ACTUAL	FRAMING	ACTUAL	FRAMING	ACTUAL	FRAMING	ACTUAL	FRAMING		
Fortress	49-3/8" (1254)	49-1/2" (1257)	49-3/8" (1254)	49-1/2" (1257)	44-3/8" (1154)	44-1/2" (1130)	25-5/8" (650)	23" (584)	36" x 30" (915 x 762)	56,000 (NG/LP)



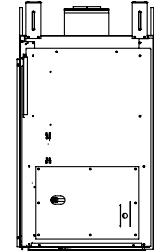
Top View



Front View



Side View



Side View



36"

Twilight II (Indoor Side) shown with firescreen front and carriage hill companions in black

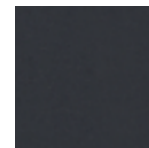
Twilight II (Outdoor Side) shown with standard exterior front

## TWILIGHT II

### Indoor/Outdoor Gas Fireplace

Add warmth and fireside views to two spaces—with one fireplace. The Twilight II is the world's first see-through indoor/outdoor gas fireplace. Enjoy the fire all year long from either side. An advanced design and strong construction ensures an impressive and consistent performance.

Finishes  
(Indoor)



Black



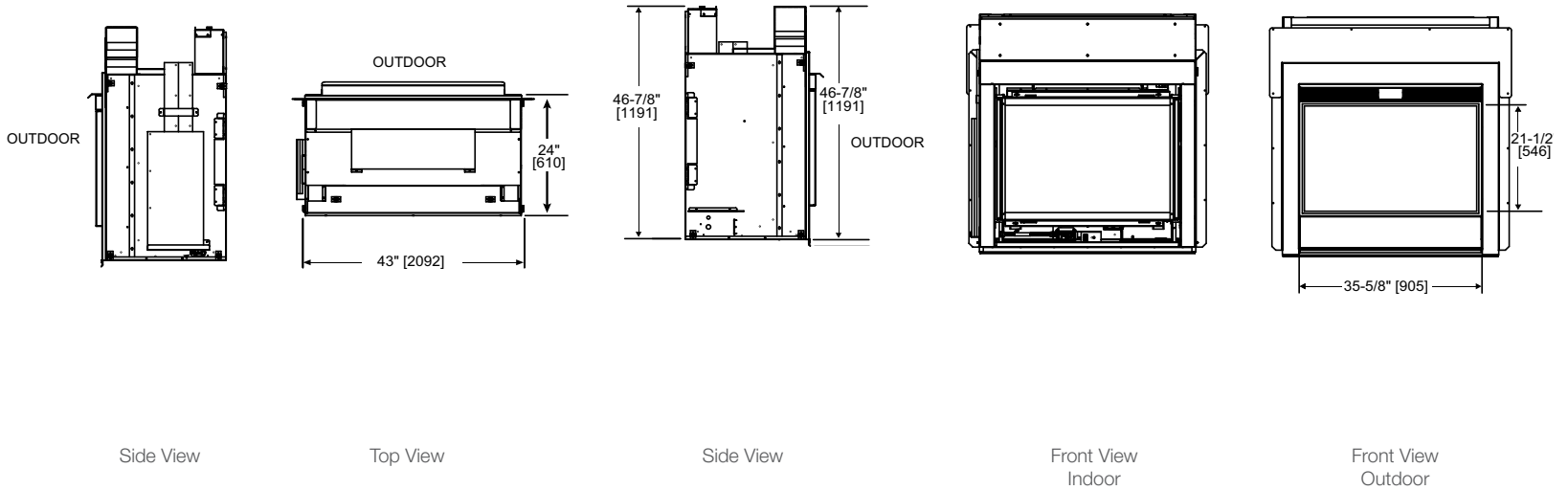
Fog Gray  
(Contemporary only)



# TWILIGHT II SPECIFICATIONS

No Venting Required

MODEL	FRONT WIDTH (A)		REAR WIDTH (B)		HEIGHT (C)		DEPTH (D)		GLASS SIZE (E x F)	BTU/HR INPUT
	ACTUAL	FRAMING	ACTUAL	FRAMING	ACTUAL	FRAMING	ACTUAL	FRAMING		
Twilight II	43" (1091)	44" (1118)	43" (1091)	44" (1118)	46-7/8" (1191)	47-5/8" (1210)	24" (609)	23" (584)	35-5/8" x 21-1/2" (905 x 546)	38,000 (NG), 36,000 (LP)





36"

Twilight Modern (Indoor Side) shown with black glass media and contemporary front in fog gray

Twilight Modern (Outdoor Side) shown with black glass media and standard exterior front

# TWILIGHT MODERN

## Indoor/Outdoor Gas Fireplace

The Twilight Modern is an evolution of the industry's first indoor/outdoor see-through fireplace. This Direct Vent gas unit offers impressive fireside views whether relaxing inside or enjoying the outdoors. Bolster your favorite room and upgrade your outdoor living space—let the Twilight deliver modern style, inside and out.

Glass Media



Black (Standard)

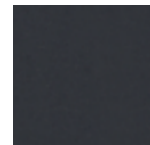


Clear



Amber

Finishes (Indoor)



Black

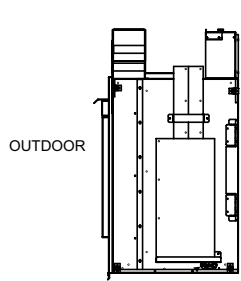


Fog Gray  
(Contemporary only)

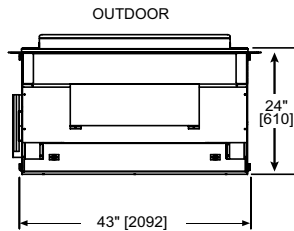
# TWILIGHT MODERN SPECIFICATIONS

No Venting Required

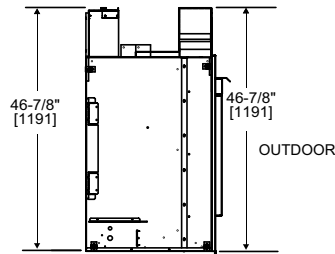
MODEL	FRONT WIDTH (A)		REAR WIDTH (B)		HEIGHT (C)		DEPTH (D)		GLASS SIZE (E x F)	BTU/HR INPUT
	ACTUAL	FRAMING	ACTUAL	FRAMING	ACTUAL	FRAMING	ACTUAL	FRAMING		
Twilight Modern	43" (1091)	44" (1118)	43" (1091)	44" (1118)	46-7/8" (1191)	47-5/8" (1210)	24" (609)	23" (584)	35-5/8" x 21-1/2" (905 x 546)	38,000 (NG), 36,000 (LP)



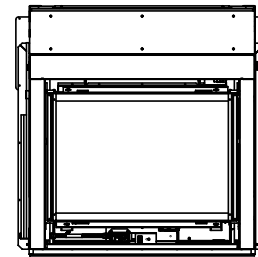
Side View



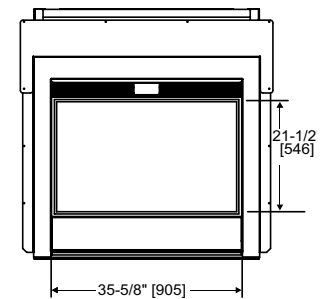
Top View



Side View



Front View  
Indoor



Front View  
Outdoor



51"

Lanai shown with clean face trim and red LED lighting

# LANAI

## Outdoor Gas Fireplace

Light up your landscape. The Lanai linear gas fireplace offers contemporary style. Feel confident enjoying the flames with proven technologies. The night comes alive with glowing flames and a colorful firebed.

LED Lighting



White



Aqua



Blue



Purple



Red



Yellow

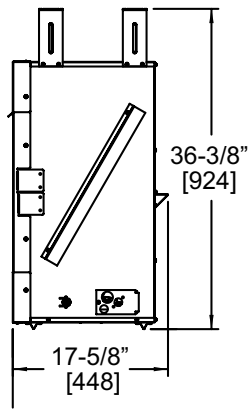


Green

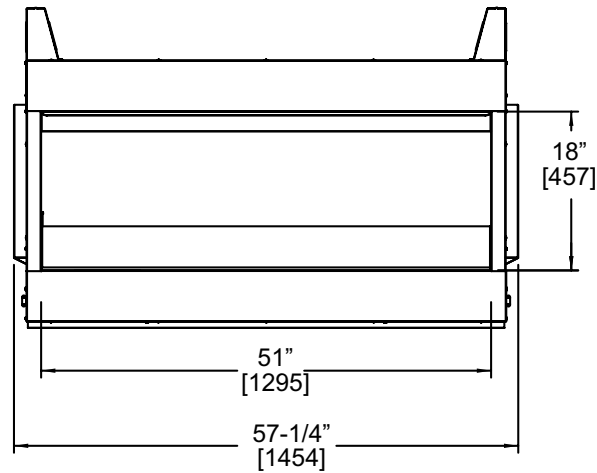
# LANAI SPECIFICATIONS

No Venting Required

MODEL	FRONT WIDTH		REAR WIDTH		HEIGHT		DEPTH		VIEWING AREA	BTU/HR INPUT
	ACTUAL	FRAMING	ACTUAL	FRAMING	ACTUAL	FRAMING	ACTUAL	FRAMING		
Lanai	57-1/4" (1454mm)	57-3/4" (1467mm)	57-1/4" (1454mm)	57-3/4" (1467mm)	36-3/8" (924mm)	39-1/2" (1003mm)	17-5/8" (448mm)	17-5/8" (448mm)	51" x 18" (1295mm x 457mm)	55,000 (NG)



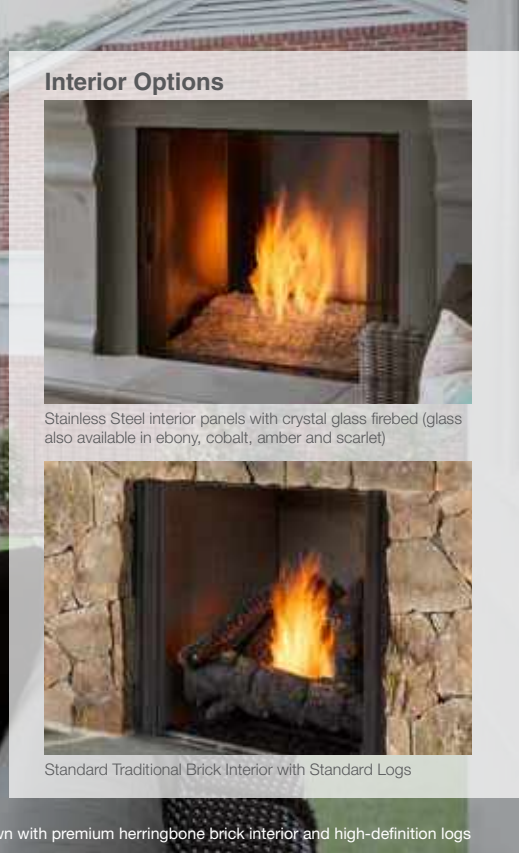
Left View



Front View



36" 42"



**Interior Options**



Stainless Steel interior panels with crystal glass firebed (glass also available in ebony, cobalt, amber and scarlet)



Standard Traditional Brick Interior with Standard Logs

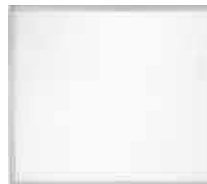
Courtyard shown with premium herringbone brick interior and high-definition logs

# COURTYARD

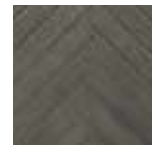
## Outdoor Gas Fireplace

The Courtyard outdoor gas fireplace is the perfect blend of artistry and function: traditional styling with ultra-realistic logs or contemporary glass, that ignite at the flip of a switch. Mesmerizing flames provide instant ambiance and relaxation. Cozy up with the Courtyard.

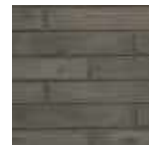
Framed Mesh Barrier



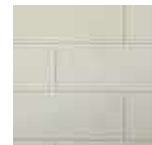
Interiors



Premium Herringbone



Premium Traditional



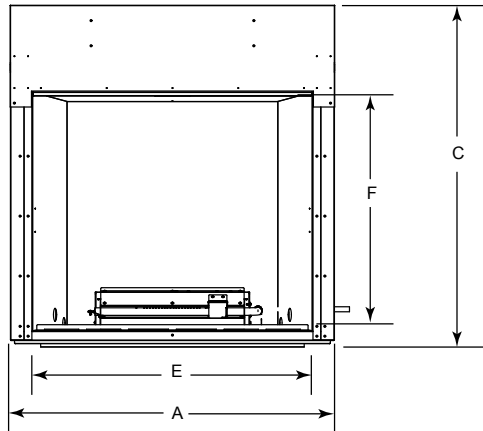
Standard Traditional



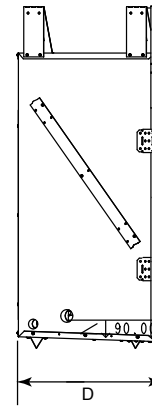
Stainless Steel

# COURTYARD SPECIFICATIONS

MODEL	FRONT WIDTH (A)		REAR WIDTH		HEIGHT (C)		DEPTH (D)		VIEWING AREA (E x F)	BTU/HR INPUT
	ACTUAL	FRAMING	ACTUAL	FRAMING	ACTUAL	FRAMING	ACTUAL	FRAMING		
Courtyard 36	41-3/4" [1060]	43-1/2" [1105]	31-1/2" [800]	43-1/2" [1105]	44" [1118]	44-1/8" [1121]	18" [457]	18-1/8" [459]	36" x 30-3/4" [914 x 781]	55,000 (NG) / 53,000 (LP)
Courtyard 42	47-3/4" (1213mm)	49-1/2" (1257mm)	37-1/2" (953mm)	49-1/2" (1257mm)	44" (1118mm)	44-1/8" (1121mm)	18" (457mm)	18-1/8" (459mm)	42" x 30-3/4" [1067 x 781]	55,000 (NG) / 53,000 (LP)



Front View



Side View



36"

42"

Villa Gas shown with traditional brick interior and optional stainless steel operable doors

# VILLA GAS SERIES

## Outdoor Gas Fireplace

The Villa Gas is a versatile outdoor gas fireplace at a value price. This compact unit can easily be installed on decks or patios. A stainless steel surround thrives in the elements and complements an outdoor kitchen or space. Extend your living into the outdoors. Experience the Villa Gas fireplace.

Interiors



Traditional

Doors



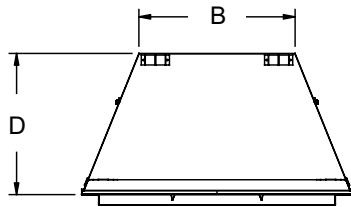
Stainless Steel Operable Doors



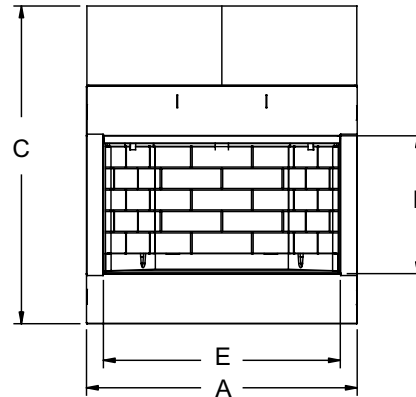
# VILLA GAS SPECIFICATIONS

No Venting Required

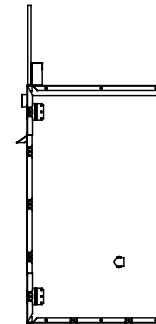
MODEL	FRONT WIDTH (A)		REAR WIDTH (B)		HEIGHT (C)		DEPTH (D)		VIEWING AREA (E x F)	BTU/HR INPUT
	ACTUAL	FRAMING	ACTUAL	FRAMING	ACTUAL	FRAMING	ACTUAL	FRAMING		
Villa Gas 36	41-1/8" (1045mm)	42" (1067mm)	23-3/4" (603mm)	42" (1067mm)	39-1/2" (1003mm)	39-3/4" (1010mm)	21-3/8" (544mm)	21-1/2" (546mm)	36" x 20-7/8" (914mm x 532mm)	40,000 (NG), 40,000 (LP)
Villa Gas 42	47-1/8" (1197mm)	48" (1219mm)	29-3/4" (756mm)	48" (1219mm)	39-1/2" (1003mm)	39-3/4" (1010mm)	21-3/8" (544mm)	21-1/2" (546mm)	42" x 20-7/8" (1067mm x 532mm)	42,000 (NG), 42,000 (LP)



Top View



Front View



Side View



Castlewood shown with glass doors, standard stainless steel mesh, traditional molded brick interior and outdoor Fireside Grand Oak gas log set

# CASTLEWOOD

## Outdoor Wood Burning Fireplace

The Castlewood turns any outdoor area into a welcoming and relaxing living space. A large, high opening provides a dramatic view from across the yard, and a textured brick interior offers masonry-style looks at a fraction of the cost. Enjoy the experience of a large wood fire with the Castlewood.

Interiors



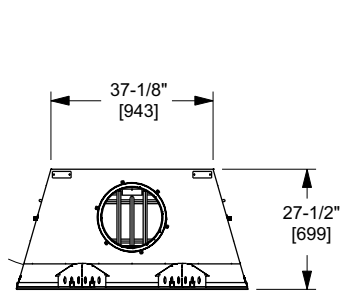
Traditional



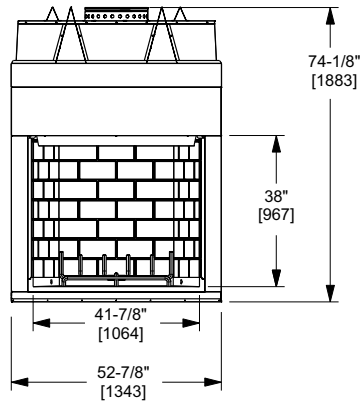
Herringbone

# CASTLEWOOD SPECIFICATIONS

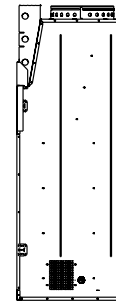
MODEL	FRONT WIDTH		REAR WIDTH		HEIGHT		DEPTH		VIEWING AREA
	ACTUAL	FRAMING	ACTUAL	FRAMING	ACTUAL	FRAMING	ACTUAL	FRAMING	
Castlewood	52-7/8" (1343mm)	53-7/8" (1368mm)	37-1/8" (943mm)	53-7/8" (1368mm)	74-1/8" (1883mm)	74-1/2" (1892mm)	27-1/2" (699mm)	28-3/8" (721mm)	41-7/8" x 38" (1063mm x 965mm)



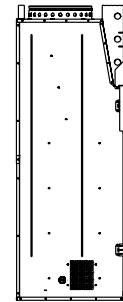
Top View



Front View



Left View



Right View



36" 42"

Montana shown with standard mesh firescreen and herringbone brick interior

# MONTANA

## Outdoor Wood Burning Fireplace

The Montana is the original outdoor fireplace that started it all. It's built to maintain its sleek stainless look for years and deliver solid performance. Enhance your outdoor area with this impressive focal point.

Interiors



Traditional



Herringbone

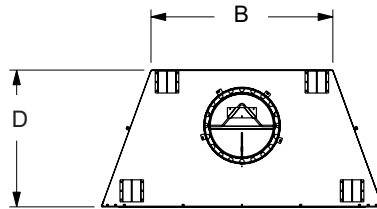
Doors



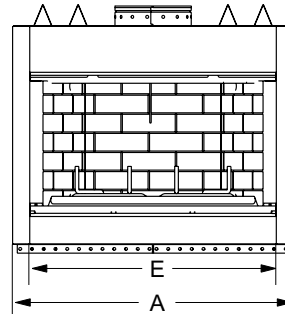
Bi-Fold Glass Doors

# MONTANA SPECIFICATIONS

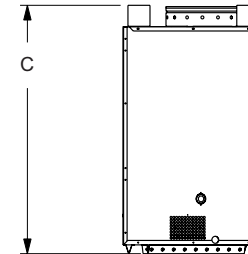
MODEL	FRONT WIDTH		REAR WIDTH		HEIGHT		DEPTH		VIEWING AREA
	ACTUAL	FRAMING	ACTUAL	FRAMING	ACTUAL	FRAMING	ACTUAL	FRAMING	
Montana 36	42" (1067mm)	43" (1091mm)	25" (635mm)	43" (1091mm)	41-3/4" (1060mm)	42-3/8" (1076mm)	23" (597mm)	24-1/8" (613mm)	36" x 23-1/2" (915mm x 597mm)
Montana 42	48" (1219mm)	49" (1246mm)	31" (787mm)	49" (1246mm)	41-3/4" (1060mm)	42-3/8" (1076mm)	23" (597mm)	24-1/8" (613mm)	42" x 23-1/2" (1067mm x 597mm)



Top View



Front View



Side View



36" 42"

Villa Wood shown with standard stainless steel mesh, traditional brick interior and outdoor Fireside Realwood gas logs

# VILLA WOOD SERIES

## Outdoor Wood Burning Fireplace

The Villa Wood is a wood-burning fireplace at home in a variety of outdoor spaces. Upgrade your outdoor kitchen, or enhance your living area with style and warmth. Attractive stainless steel surround accents your décor. Add the Villa Wood outdoor fireplace to your deck or patio and enjoy the experience of a wood fire.

Interiors



Traditional



Herringbone

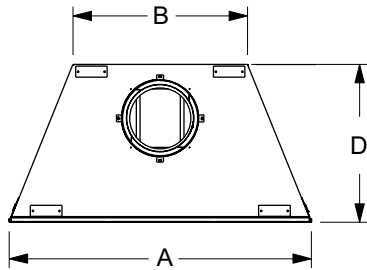
Doors



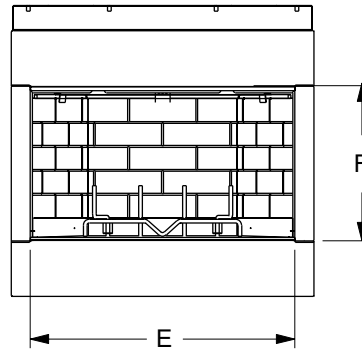
Bi-Fold Glass Doors

# VILLA WOOD SPECIFICATIONS

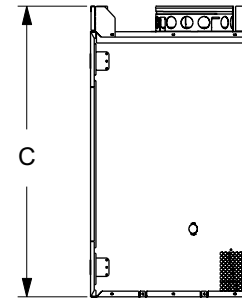
MODEL	FRONT WIDTH		REAR WIDTH		HEIGHT		DEPTH		VIEWING AREA
	ACTUAL	FRAMING	ACTUAL	FRAMING	ACTUAL	FRAMING	ACTUAL	FRAMING	
Villawood 36	41" (1041mm)	42" (1067mm)	23-3/4" (603mm)	42" (1067mm)	39-1/2" (1003mm)	39-3/4" (1010mm)	21-3/8" (544mm)	21-1/2" (546mm)	36" x 20-7/8" (914mm x 532mm)
Villawood 42	47" (1194mm)	48" (1219mm)	29-3/4" (756mm)	48" (1219mm)	39-1/2" (1003mm)	39-3/4" (1010mm)	21-3/8" (544mm)	21-1/2" (546mm)	42" x 20-7/8" (1067mm x 532mm)



Top View



Front View



Side View



24" 48" 72" 96" 120"

# PLAZA

## Outdoor Gas Fire Pit

The Plaza outdoor linear gas fire pit allows you to invite your neighbors to gather around the fire (2 or 4' lengths) or add a dramatic statement piece in your space (6, 8 or 10' lengths). Make this fire feature your own with endless finishing options to complete your outdoor oasis. With only a flick of a lighter, sit back and enjoy.

Media



Crystal



Ebony



Cobalt



Amber



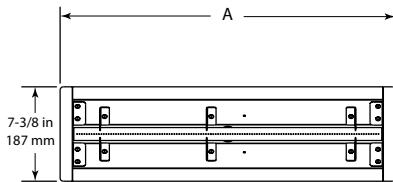
Lava Rock



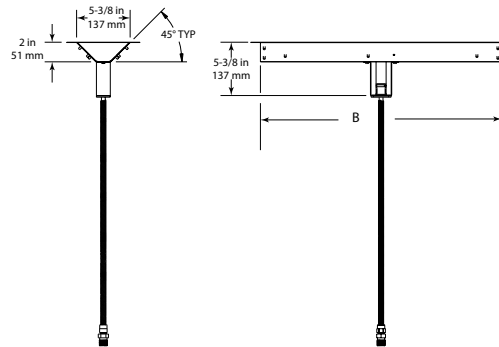
# PLAZA SPECIFICATIONS

MODEL	LENGTH	WIDTH	DEPTH	VIEWING AREA	BTU/HR INPUT
PLAZA-24S	24 [610]	5-3/8 [137]	5-3/8 [137]	24 x 5-3/8 [613 x 137]	32,000

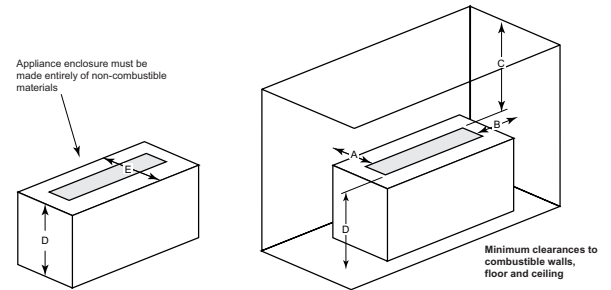
Top View



Side View



CLEARANCES



	Starter Kit	Starter +1 extension	Starter + 2 extensions	Starter + 3 extensions	Starter + 4 extensions
A	26 in (660 mm)	50 in (1270 mm)	74 in (1880 mm)	98 in (2489 mm)	122 in (3099 mm)
B	24 in (610 mm)	48 in (1219 mm)	72 in (1829 mm)	96 in (2438 mm)	120 in (3048 mm)

		A	B	C	D	E
ODPLAZA-L24S	in	17	17	45	8	8
	mm	432	432	1143	203	203



For more information about Majestic efficient and environmentally-friendly products, please visit

**[majesticproducts.com](http://majesticproducts.com)**

**[majesticfireplaces.ca](http://majesticfireplaces.ca)**

The information provided in this literature is for planning purposes only and subject to change. Please consult the installation manual for actual installation. Actual product appearance may differ from product images. Fireplace, stove and insert surfaces get extremely HOT and can cause severe burns if touched. Keep a safe distance away. To learn more visit [www.majesticproducts.com](http://www.majesticproducts.com).

© 2018 Hearth & Home® Technologies

MAJ-1024U-1119