



**THE**  
**LEXINGTON**  
**HEARTH**

KENTUCKY-INSPIRED. EXPERTLY-CRAFTED.  
**NON-COMBUSTIBLE MANTELS**

[LEXINGTONHEARTH.COM](http://LEXINGTONHEARTH.COM)

# NATURE RE-CREATED

THE BEAUTY OF NATURAL MATERIALS IN NON-COMBUSTIBLE MANTELS



Antique Timbers,  
Without the Splinters



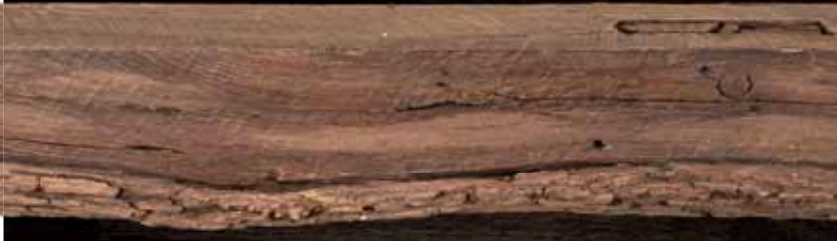
## Hand-Painted Color

Each Lexington Hearth mantel is meticulously hand-painted by our incredible coloring artists to capture the natural weathered characteristics and color nuances that can only be acquired with exposure to the elements over many years.

WOOD-INSPIRED MANTELS ARE AVAILABLE IN THREE COLORS: PALE HONEY, WEATHERED GREY, AND MADURO



AVAILABLE IN 5' – 6' LENGTH AND 3 COLORS  
HEIGHT, DEPTH AND WEIGHT VARIES BY MODEL



### Why Non-Combustible?

Mantels are hand-cast from each mold using our high-definition Burncrete™, a patented non-combustible casting formulation that authentically replicates the rich texture and character details of antique wood and stone.

SAFELY INSTALL A TELEVISION OR ARTWORK ABOVE THE FIREPLACE



### Installation

Everything is included for professional installation, including a mounting bracket, fasteners, a touch-up kit, and instructions.



# BORN IN THE BLUEGRASS

Lexington Hearth mantels are inspired by old-growth timbers and beams salvaged from historic barns, farms, homes, and cabins across Bourbon Country.



Our designers reference building materials from old Kentucky barns and antique buildings – irreplaceable jewels of architectural history – to create an authentic mantel mold with details such as knots, wood grain, saw marks, and end grains.



## GRIST MILL

5' WIDE, 69 LBS. OR 6' WIDE, 86 LBS.  
5.75" TALL | 8" DEEP | 3 COLORS

Our Grist Mill mantel is molded directly from a 6" x 6" beam for an authentically rustic look. Features include deeply weathered woodgrain, tool marks, saw marks, checks & splits, and knots.



PALE HONEY

WEATHERED GREY

MADURO



## RICKHOUSE

5' WIDE, 106 LBS. OR 6' WIDE, 141 LBS.  
8" TALL | 8" DEEP | 3 COLORS

The Rickhouse is reminiscent of aging warehouses used to store barrels of bourbon. Mortice & tenon joinery and saw marks are highlighted in this mantel molded from 8" x 8" old-growth timber.



PALE HONEY

WEATHERED GREY

MADURO



## CABIN PINE

5' WIDE, 65 LBS. OR 6' WIDE, 75 LBS.  
6" TALL | 6" DEEP | 3 COLORS

Featuring a unique transition from square to round edge, the Cabin Pine mantel captures the rustic imperfections of primitive Kentucky craftsmanship with multi-level splits and nail hole details.



PALE HONEY

WEATHERED GREY

MADURO





## FLAT SAWN BEAM

5' WIDE, 80 LBS. OR 6' WIDE, 97 LBS.  
4" TALL | 8.25" DEEP | 3 COLORS

With a more contemporary aesthetic, the Flat Sawn Beam is reminiscent of the fencing lining the rolling fields of Kentucky horse farms. Saw marks and wood grain details are prominent.



PALE HONEY

WEATHERED GREY

MADURO



## HALF ROUND SLEEPER

5' WIDE, 87 LBS. OR 6' WIDE, 110 LBS.  
6" TALL | 8" DEEP | 3 COLORS

The distinctive live-edge bark on the sleeper beam offers a rustic charm inspired by barns dotting the Kentucky landscape. We split a full-round beam lengthwise to mold our half-round sleeper mantel.



PALE HONEY

WEATHERED GREY

MADURO



## HAYLOFT BEAM

5' WIDE, 82 LBS. OR 6' WIDE, 102 LBS.  
5.75" TALL | 8" DEEP | 3 COLORS

Paying tribute to the hayloft above Kentucky horse stables, this mantel beam captures rustic details of the original structures: dowel ends, checking and splits, character knots and nail holes.



PALE HONEY

WEATHERED GREY

MADURO





## TOBACCO BARN

5' WIDE, 101 LBS. OR 6' WIDE, 130 LBS.  
7.5" TALL | 7.5" DEEP | 3 COLORS

Fashioned from timbers that could have been recovered from an old Kentucky tobacco barn, features include hand-hewn tool marks, deep checking, knots, and growth rings visible on the ends.



PALE HONEY

WEATHERED GREY

MADURO



## ROCKFACE

5' WIDE, 82 LBS. OR 6' WIDE, 94 LBS.  
4.75" TALL | 8" DEEP | 2 COLORS

Kentucky's land is uniquely shaped by limestone — naturally releasing minerals into our soil, helping horses develop stronger bones and bourbon to age gracefully. Our rough chiseled mantel includes crystalized minerals that reflect light and add sparkle to a fireplace.



TURFWAY TAN



BLUEGRASS FOG



## HITCHING POST

3-PIECE SET | 3 COLORS

In a simpler time, horsepower came with a saddle. Homes and businesses across Kentucky had either a hitching post or a hitching rail to tie off horses, preventing wandering. Our 3-piece Hitching Post mantel surround features deep weathered woodgrain, tool marks, checking and splits, character knots, and nail holes, capturing the rustic charm of our Bluegrass past.



PALE HONEY

WEATHERED GREY

MADURO



### TOP:

5.75" TALL | 80 LBS.  
5.25" DEEP | 78.5" WIDE

### LEFT/RIGHT:

56" TALL \*CAN BE CUT DOWN TO OTHER SIZES  
5.25" DEEP | 5.5" WIDE | 54 LBS.

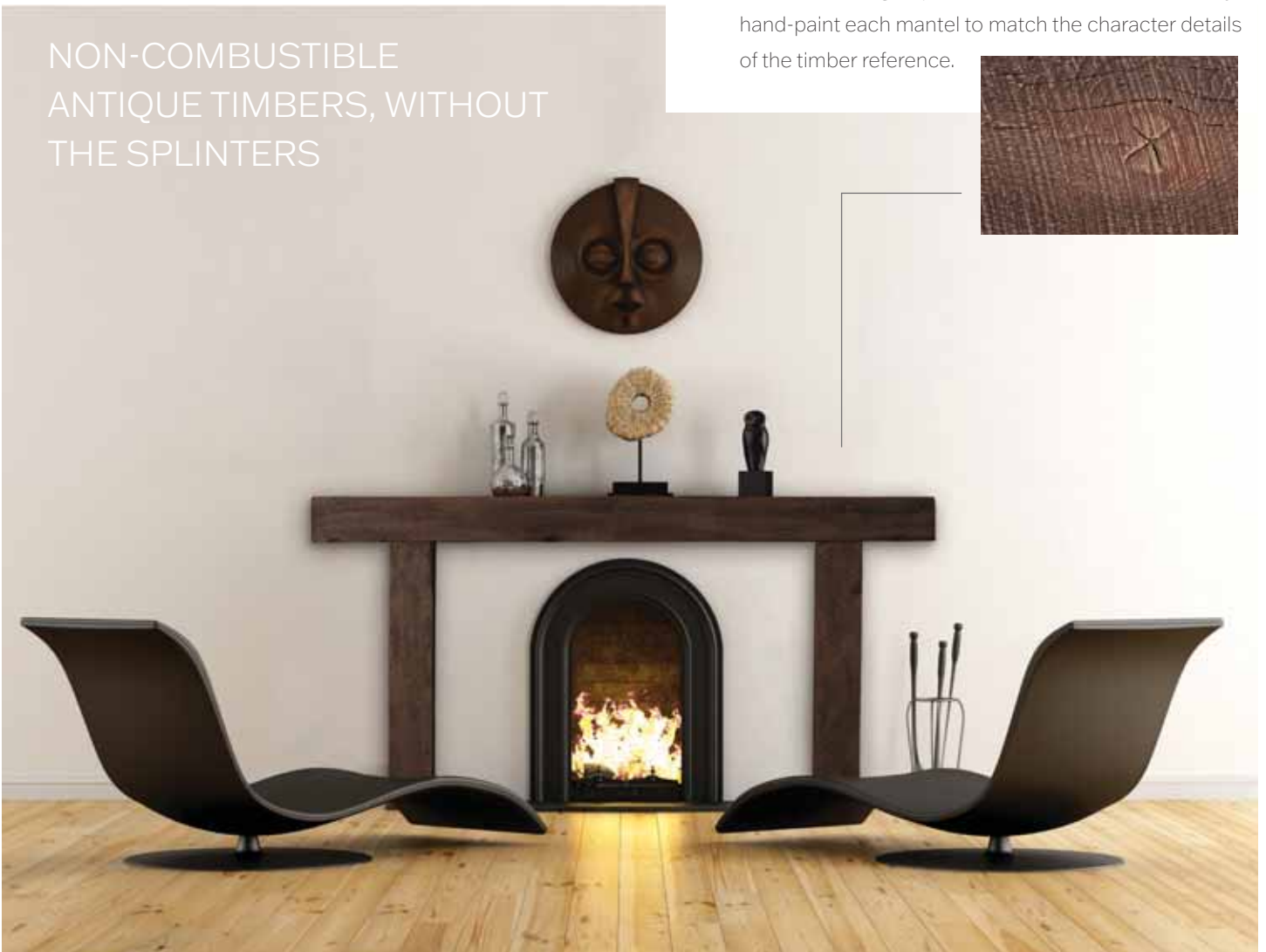


### Is it real, or is it Lexington Hearth?

Our artists replicate knots, saw marks, wood grain, tool marks, checking a splits, nail holes , and more, as they hand-paint each mantel to match the character details of the timber reference.



NON-COMBUSTIBLE  
ANTIQUÉ TIMBERS, WITHOUT  
THE SPLINTERS



TOP LEFT: TOBACCO BARN IN MADURO; TOP RIGHT: FLAT SAWN BEAM IN WEATHERED GREY ABOVE: HITCHING POST IN MADURO

# THE BLUEGRASS COLLECTION

KENTUCKY-INSPIRED, EXPERTLY-CRAFTED,  
NON-COMBUSTIBLE MANTELS



**GRIST MILL** | OAK BEAM  
AVAILABLE IN 5' AND 6'

**RICKHOUSE** | BARK EDGE TIMBER  
AVAILABLE IN 5' AND 6'



**TOBACCO BARN** | HAND-HEWN TIMBER  
AVAILABLE IN 5' AND 6'

**CABIN PINE** | PINE BEAM  
AVAILABLE IN 5' AND 6'



**HALF ROUND SLEEPER** | BARK EDGE  
AVAILABLE IN 5' AND 6' TIMBER

**HAYLOFT BEAM** | HAND-HEWN BEAM  
AVAILABLE IN 5' AND 6'



**FLAT SAWN BEAM** | ROUGH SAWN  
AVAILABLE IN 5' AND 6' CEDAR

**ROCKFACE** | LIMESTONE  
AVAILABLE IN 5' AND 6'



**HITCHING POST** | ROUGH SAWN  
AVAILABLE IN ONE SIZE CEDAR  
POST SUPPORT HEIGHT  
IS CUSTOMIZABLE