

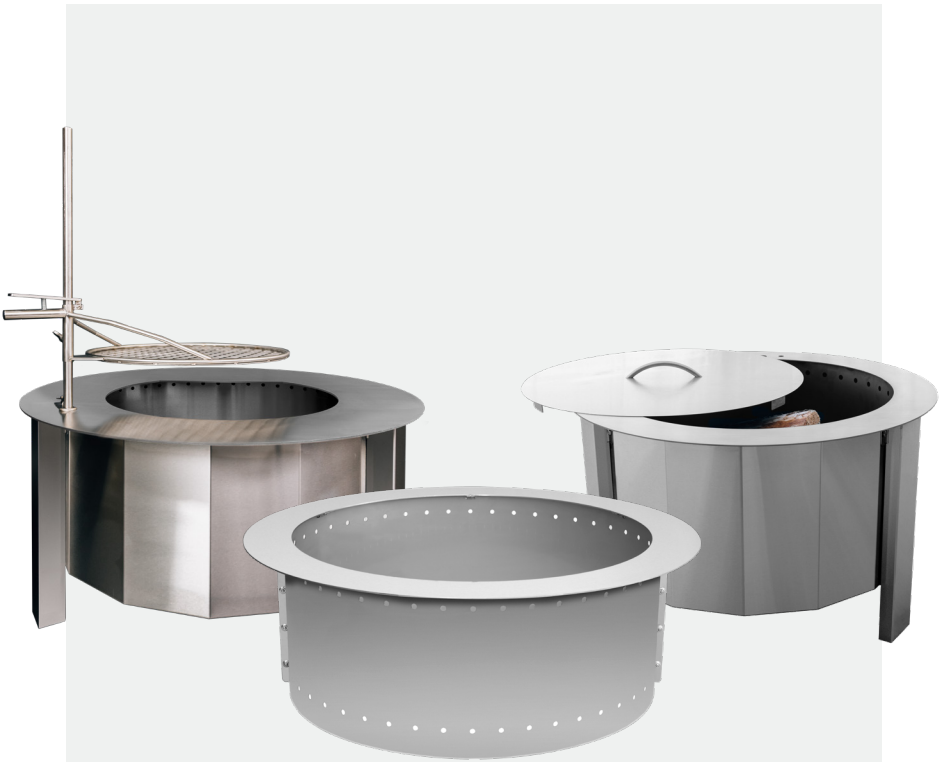
LUME

BY FIREGEAR



FIREGEAR





LUME



WOOD
BURNING



100% Commercial
Grade
STAINLESS
STEEL



SRW/PAVERS
COMPATIBLE

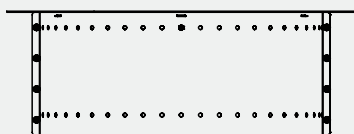
100% Commercial-Grade Stainless Steel insert and freestanding reduced smoke wood fire pits, specially designed to burn more efficiently and emit less smoke. The LUME series includes both Freestanding and Insert units for SRW Block, Bricks, or other Non-Combustible material as well as Sear and Non Sear cooking surface areas.

LUME INSERT - NON SEAR

LUME-29R / LUME-34R / LUME-36R



Dimensions	LUME-29 RL	LUME-34R	LUME-36R
Rim Outer Diameter	34"	39"	41"
Rim Inner Diameter	26"	31"	34"
Height	12"	12"	12"
Base Out Diameter	29"	34"	36"
Weight	21 lbs	25 lbs	26 lbs
Fits Openings	29" - 32"	34" - 37"	36" - 39"



FEATURES:

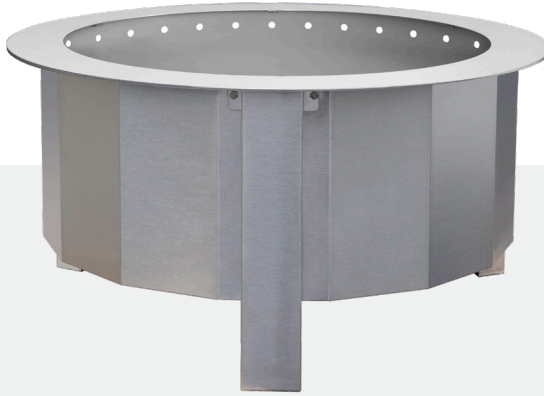
- » Unique design for less smoke
- » Insert into SRW Block, Bricks, or other Non-Combustible material

OPTIONAL ITEMS:

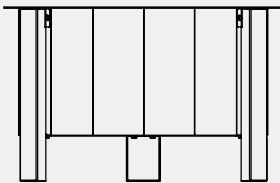
- » Lid Available

LUME FREESTANDING - NON SEAR

LUME-MS1 / LUME-MS2



Dimensions	LUME-MS1	LUME-MS2
Rim Outer Diameter	26"	31"
Inner Diameter	20"	25"
Height	16 3/8"	16 3/8"
Base Out Diameter	25 1/4"	30 1/4"
Overall Leg Distance	23 3/16"	28 3/16"
Outer Liner	23 5/16"	28 5/16"
Weight	44 lbs	55 lbs
Fit Openings	23 1/2" - 25 1/4"	28 1/2" - 30 1/4"



FEATURES:

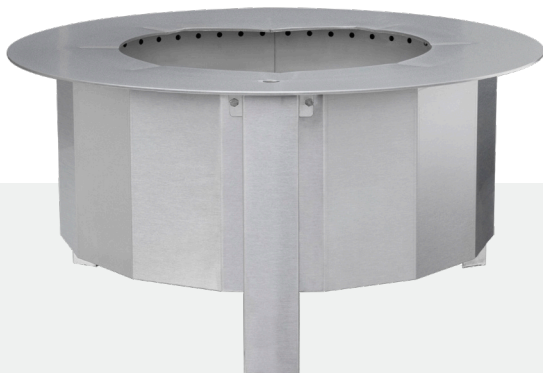
- » Unique design for less smoke
- » Lightweight, easy to transport
- » Modular, removable legs
- » Freestanding or Insert capability to SRW Block, Bricks, or other Non-Combustible material
- » Low Maintenance

OPTIONAL ITEMS:

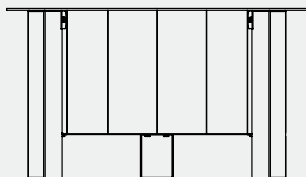
- » Lid Available
- » Cooking Post & Grate Available

LUME FREESTANDING SEAR COOKING SURFACE

LUME-MS1SR / LUME-MS2SR



Dimensions	LUME-MS1SR	LUME-MS2SR
Rim Outer Diameter	29"	34"
Rim Inner Diameter	18"	20"
Height	16 7/16"	16 7/16"
Base Out Diameter	27 3/8"	32 3/8"
Overall Leg Distance	24 7/8"	29 1/8"
Outer Liner	23 5/16"	28 5/16"
Weight	62 lbs	82 lbs
Fit Openings	23 1/2" - 27 1/2"	28 1/2" - 32 1/2"



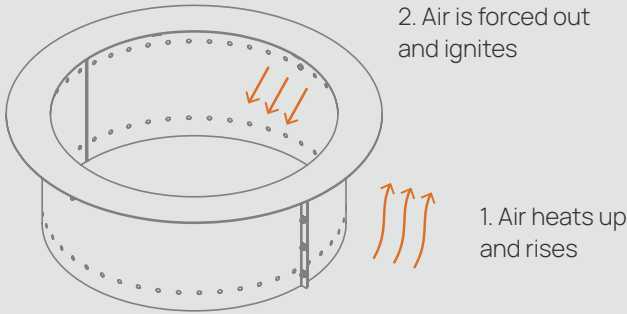
FEATURES:

- » Unique design for less smoke
- » Lightweight, easy to transport
- » Modular, removable legs
- » Larger surface, more cooking space
- » Freestanding or Built-In capability to SRW Block, Bricks, or other Non-Combustible material
- » Low maintenance

OPTIONAL ITEMS:

- » Lid Available
- » Cooking Post & Grate Available

HOW DOES IT BURN



Our fire pits produce less smoke by using smoke as a fuel source—igniting it so it burns up and stays out of your way. The fire pits have two walls: the freestanding units have two stainless steel walls, and the drop-in units have one stainless steel wall and utilize the fire pit paver as the second wall. The air is heated up between the walls (1), as it rises to the top it is forced out of the upper holes (2), increasing the oxygen level to the fire and create a hotter burn. This excess heat ignites the smoke (unburned fuel) and causes the smoke to burn, creating significantly less smoke output.

ACCESSORIES



Lids

LID-LUME-MS-A : LID, TOP MS1 / MS2SR MULTI SIDED WALL FIRE PIT
LID-LUME-MS-B : LID, TOP MS1SR MULTI SIDED WALL FIRE PIT
LID-LUME-MS-C : LID, TOP MS2 MULTI SIDED WALL FIRE PIT
LID-LUME29R : LID, TOP 29R SINGLE WALL FIRE PIT
LID-LUME34R : LID, TOP 34R SINGLE WALL FIRE PIT
LID-LUME36R : LID, TOP 36R SINGLE WALL FIRE PIT



Cooking Grates

LUME-MSG-2

With the optional cooking grate you will extend your grilling surface area and help control temperature by adjusting not only elevation but also location. Easy, single hand operation allows you to adjust up-and-down and left-right for the fullest grilling experience.