

Electric Series

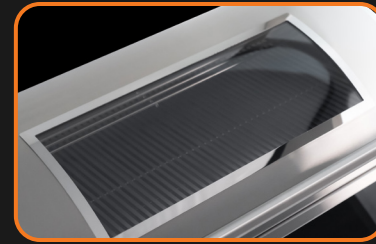


FIREMAGIC[®]

EL500i Electric Grills

The new Fire Magic® EL500 Electric Grill series combines the luxury, performance and durability Fire Magic is known for with innovative sustainable technology to deliver a premium electric grilling experience outdoors.

Available in three versions, each unit is **powered by 240v** and boasts a large 31"x16" cooking surface with patented Diamond Sear cooking grids. With a preheat time of less than 15 minutes, the new EL500 is powered by an advanced heat system featuring either single or dual thermostatic control and a temperature range of up to 700°F for perfect searing and enhanced flavor. Crafted from 304 stainless steel and available with a large ceramic glass window, the grill's sleek, black glass touch control panel with Bluetooth technology enables control from a smartphone. Cut-out: 33" w x 17½" d x 7¼" h.



Magic View Window Option



Heavy Duty Warming Rack



Touch Screen Control with Digital Thermometer and Bluetooth



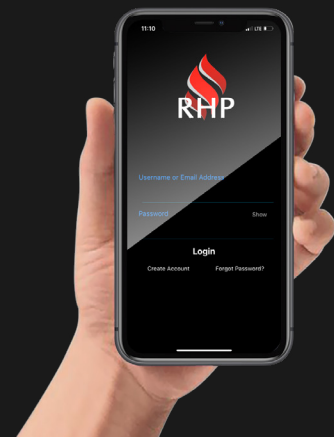
Diamond Sear Cooking Grids



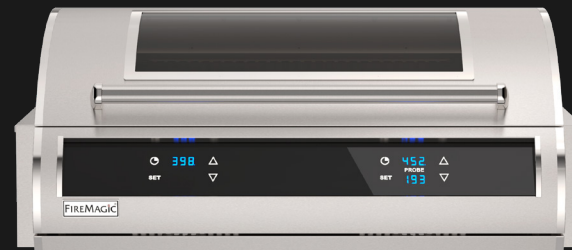
Heavy Duty Dual Heating Element powered by 240 vac/ 30amp circuit



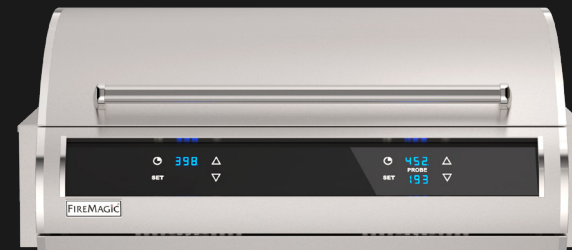
Easy-to Use Large Drip Tray



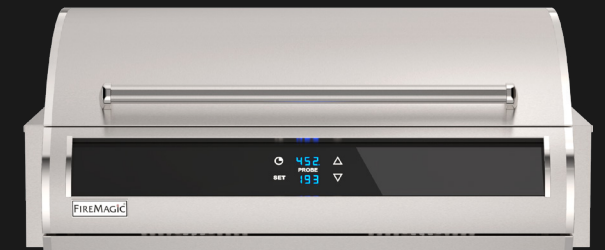
Bluetooth technology enables control from a smartphone



EL500i-4Z1E-W - Two Controls, Window



EL500i-4Z1E - Two Controls, no Window



EL500i-3Z1E - One Control, no Window

FIREMAGIC[®]

BUILT WITH PASSION. OWNED WITH PRIDE.

14724 East Proctor Ave., City of Industry, CA 91746

www.firemagicgrills.com

