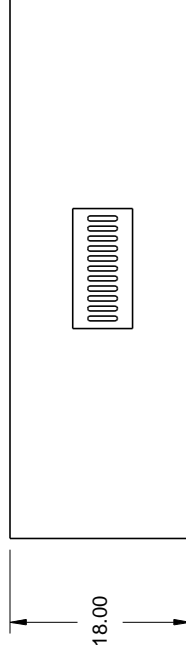
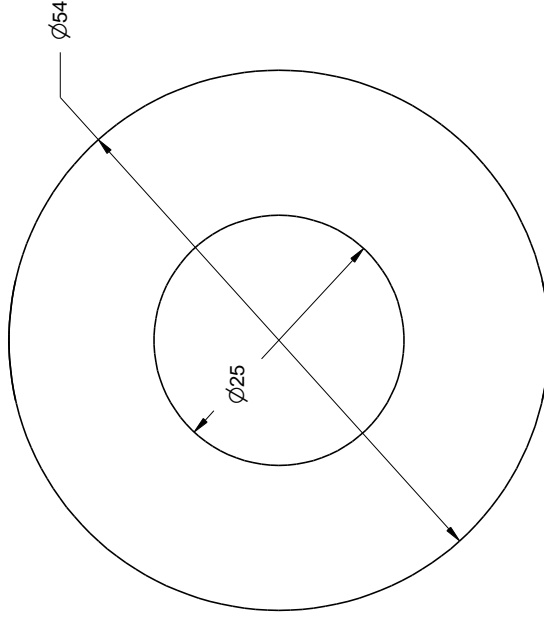
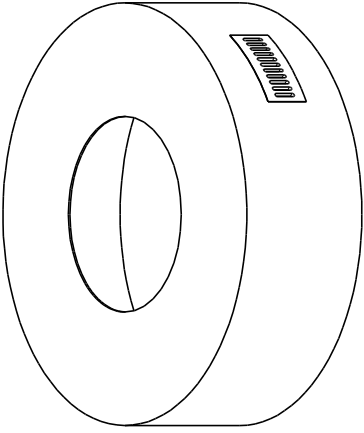




REVISIONS

ZONE	REV	DESCRIPTION	DATE	APPROVED



Material:

22G Galvanized Steel Structure  
 1/2" Hardiboard shell

Additional info:

Weights 150 lbs.  
 Optional 19" cut out for  
 19" Pan  
 304 Stainless steel vents  
 Open bottom

Do not pre-cut surface material. Only cut surface material after enclosure is on-site. HPC is not responsible for surface material that cracks or fails due to heat.	DRAWN	DATE
	Mike Chaffins	2/5/2015
	CHECKED	
	QA	
	MFG	
	APPROVED	

# FPE54-ROUND



**Hearth Products Controls Co**

SIZE	FSCM NO.	DWG NO.	REV
A			
SCALE			SHEET

